



One Seattle Comprehensive Plan





Seattle's Comprehensive Plan

Our vision for how we grow and invest in our community over the next 20 years.

Informed by four core values:

**Race and
Social Equity**

**Environmental
Stewardship**

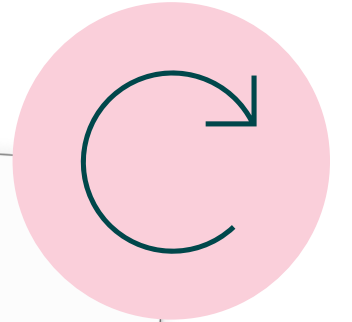
Community

**Economic Opportunity
and Security**



A Major Plan Update

- The Comprehensive Plan is updated periodically per Growth Management Act
- Our current plan, *Seattle 2035*, was completed in 2016
- A new plan is due in 2024
- Will plan for growth for next 20 years, consistent with state and regional policies
- Coordinated with other planning for:
 - Seattle Transportation Plan
 - Parks and Open Space Plan
 - Shape Our Water
 - Industrial and Maritime Strategy
 - Planning for light rail expansion



Creating a more equitable, livable, sustainable, and resilient city as we grow

The Plan update will address several major challenges for our communities and Seattle as a whole, including:

- Racial inequities, past and current
- Displacement pressures
- Housing costs
- Climate change and resilience
- Investments to meet existing and future community needs
- Recovery from the global pandemic



Plan Elements guide many City actions



Growth Strategy*

Land Use*

Transportation*

Housing*

Capital Facilities*

Utilities*

Economic Development*



Shorelines*

Container Port*

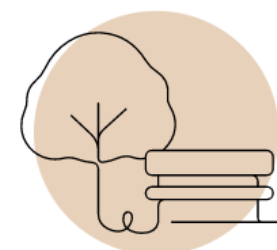
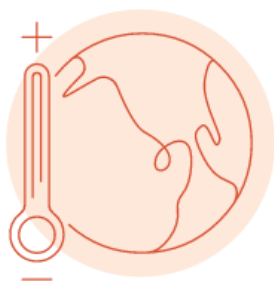
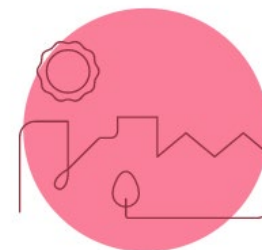
Environment

Parks and Open Space*

Arts and Culture

Community Well-being

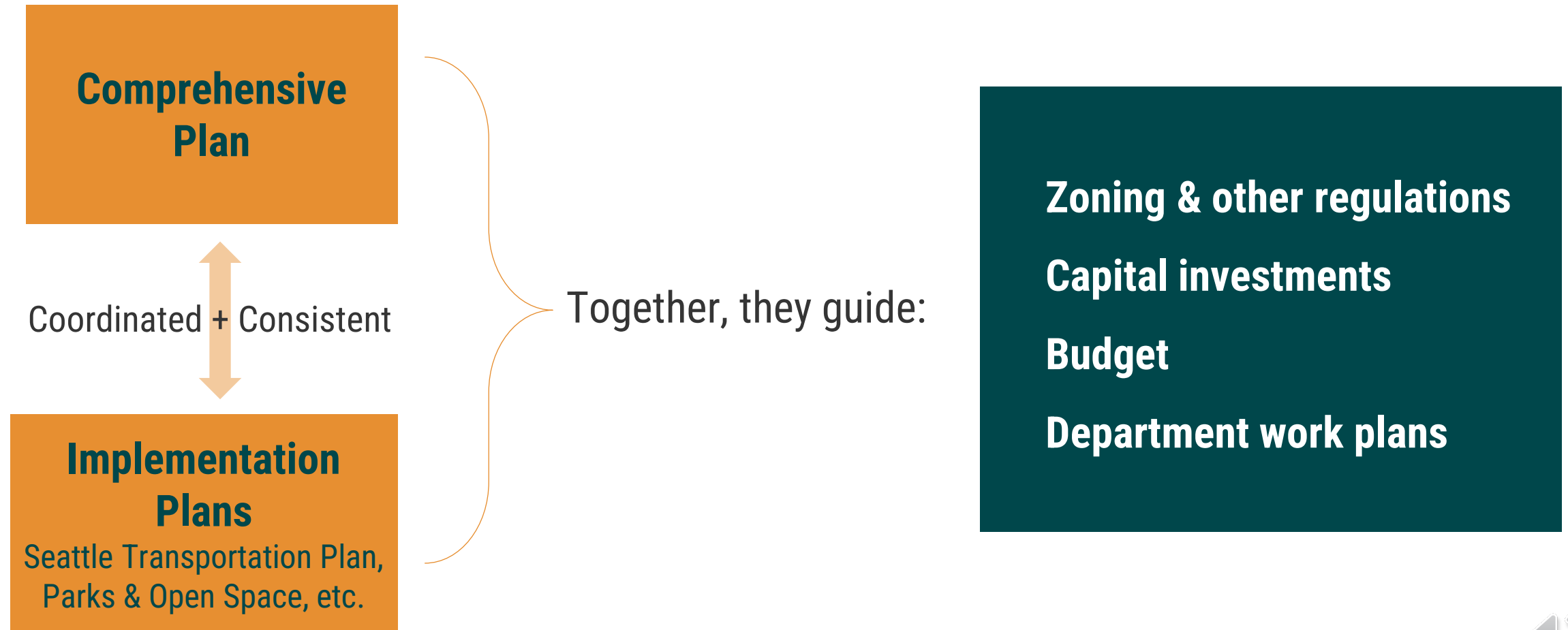
Community Involvement



* Required by the Growth Management Act (GMA)

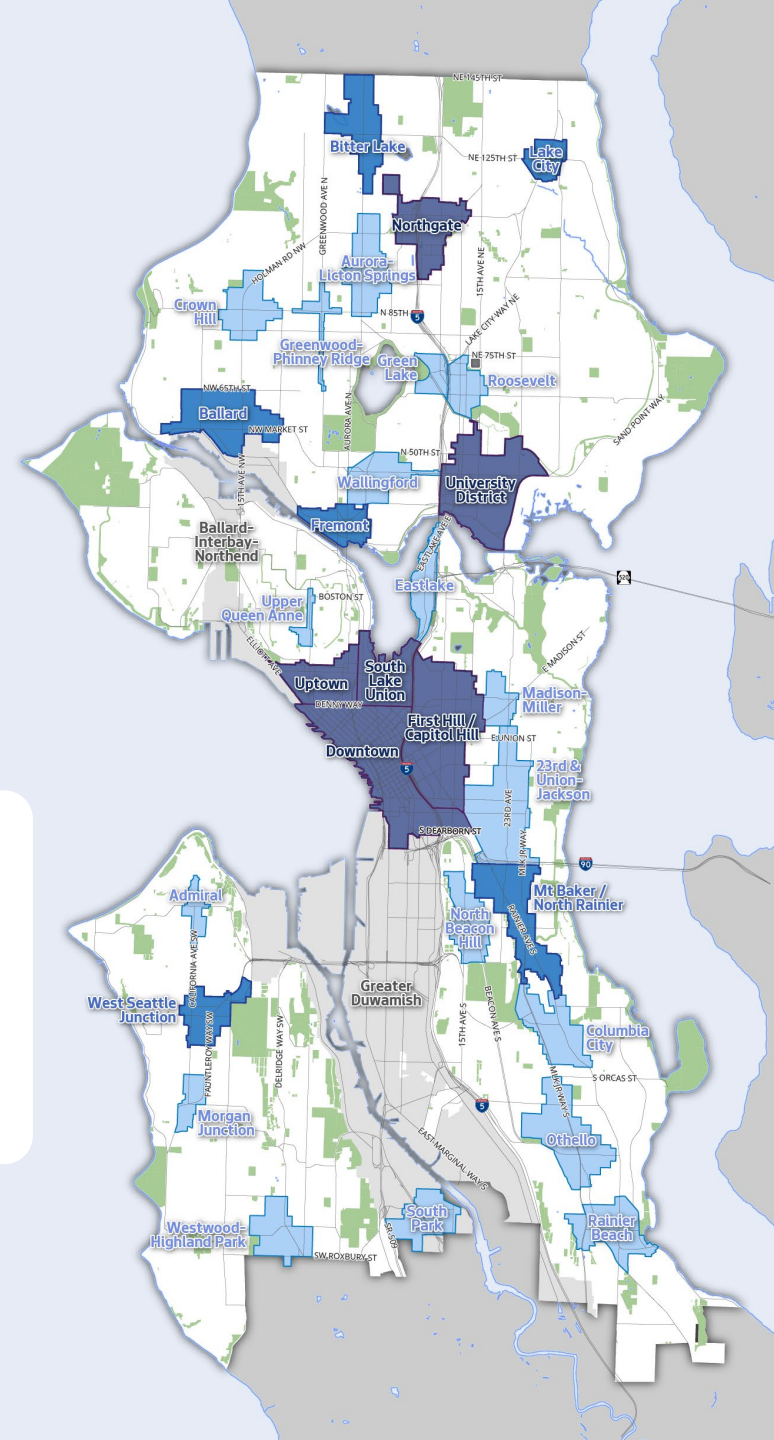
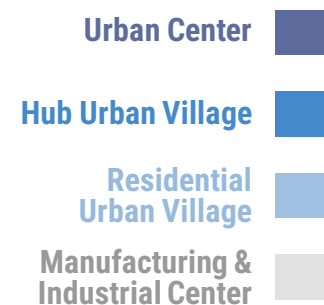


How is the Plan implemented?



Urban Village Growth Strategy

- Seattle's growth strategy since 1994
- Concentrates new housing and jobs in designated urban centers and villages
 - Also designates manufacturing and industrial centers
- Focuses most growth in compact, walkable, mixed-use neighborhoods linked by transit
- Most land outside urban villages is occupied by single family homes
- Shaped by history of racial segregation and exclusion



Updating the Growth Strategy

- In the past decade, Seattle has grown at a rapid pace
- As growth continues over the coming decades, Seattle will approach a population of 1 million
- The *One Seattle Plan* will explore new ideas for where and how we grow, such as:
 - adding new urban centers or villages
 - allowing more options for housing across the city
 - strategies to reduce the displacement of households and businesses
 - complete neighborhoods where more people can walk to local shops and services
 - planning for more growth around transit



Public engagement and schedule

Community engagement will provide opportunities for the public involvement through major milestones of the Plan Update, including:

- Goals and policies in the Plan elements
- Alternatives and impacts studied in an Environmental Impact Statement (EIS)
- Review and comment on draft Plan and draft EIS
- Engagement on plan implementation
- Racial Equity Toolkit process



How to get involved



Learn more at our website

- Comprehensive Plan 101
- Public Participation Plan
- Background information
- Equity and housing analyses
- State and regional policy



Engagement opportunities

- Email questions & comments to oneseattlecompplan@seattle.gov
- Explore the [One Seattle Plan Engagement Hub](#)
 - Surveys
 - Engagement report-outs
 - Issue Briefs
 - More!

seattle.gov/OPCD/one-seattle-plan
engage.oneSeattleplan.com





Thank you!

