

CUCAC Agenda - May 2025

SEISMIC IMPROVEMENT PROGRAM

- + Campus wide initiative to upgrade buildings with unreinforced masonry walls, parapets, and facade details
- + Focus on collapse prevention during a significant seismic event

PHASE 5

- + Suzzallo Library (2024 - 2026)
- + Hec Edmundson Pavilion (2026 - 2028)
- + Art Building (2026 - 2028)

SUZZALLO LIBRARY

- + Seismic improvements
- + Facade restoration

Types of Corrections by Building

Building	Load Bearing Corrections	Façade Corrections	Parapet Corrections	Building	Load Bearing Corrections	Façade Corrections	Parapet Corrections
Art Building				Miller Hall			
Communications			✓	Music Building	✓	✓	✓
Eagleson Hall	✓		✓	Oceanography			
Edmundson Pavilion				Plant Operations			
Gowen Hall		✓	✓	Portage Bay Bldg.			✓
Hall Health				Power Plant			✓
Harris Hydraulics				Raitt Hall			
Hutchinson Hall	✓	✓	✓	Savery Hall			✓
Jacobsen Observatory				Smith Hall		✓	✓
Johnson Hall			✓	Suzzallo Library			
Lewis Hall	✓			Thomson Hall			✓
Mary Gates Hall			✓				
Gray shading indicates work at each building							
		✓	Indicates work completed				

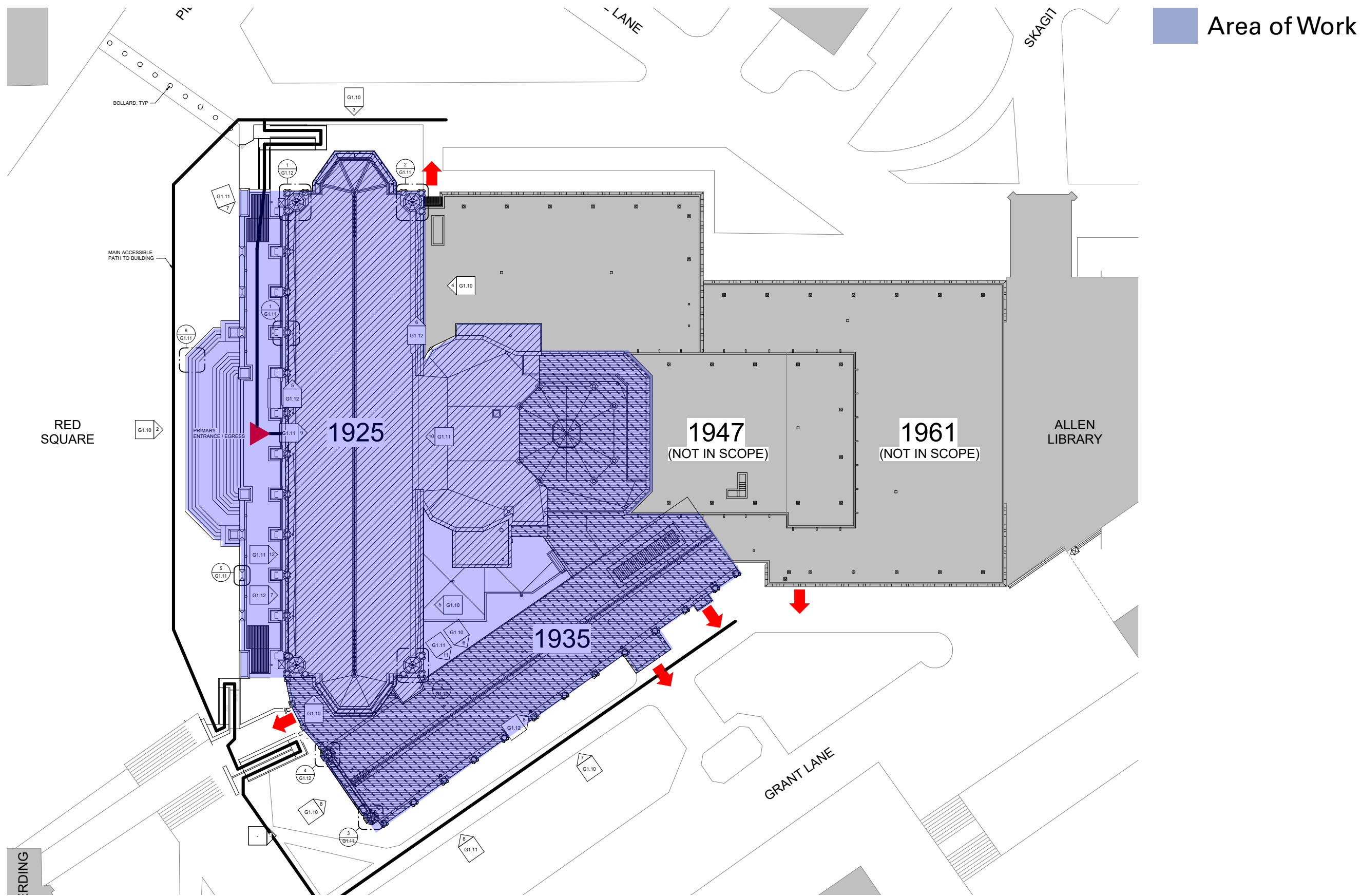
Seismic - Current Status Mapping

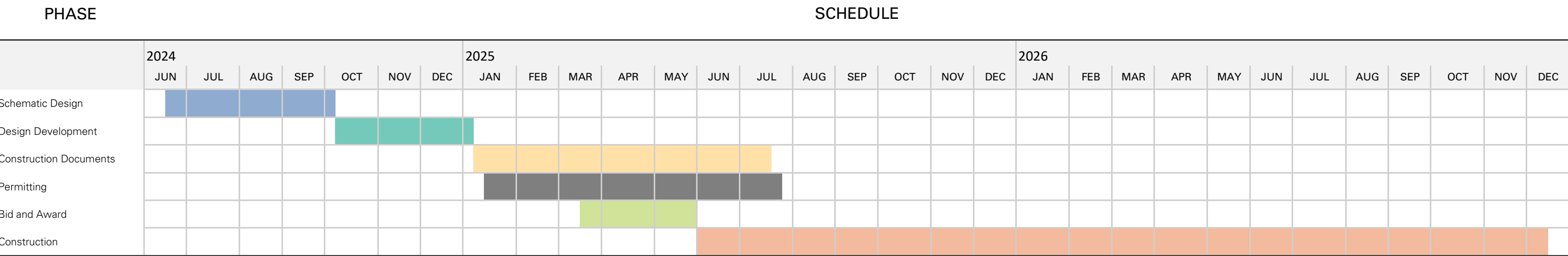


P5A SEISMIC IMPROVEMENTS SUZZALLO LIBRARY

UNIVERSITY OF WASHINGTON
BID SET -- MARCH 14, 2025







KEY DATES

Design: June 2024 - May 2025

Permitting: January 2025 - July 2025

Construction:

+ Soft Start/Mobilization: June 2025 - July 2025

+ Construction: July 2025 - August 2026

Logistics Keynotes

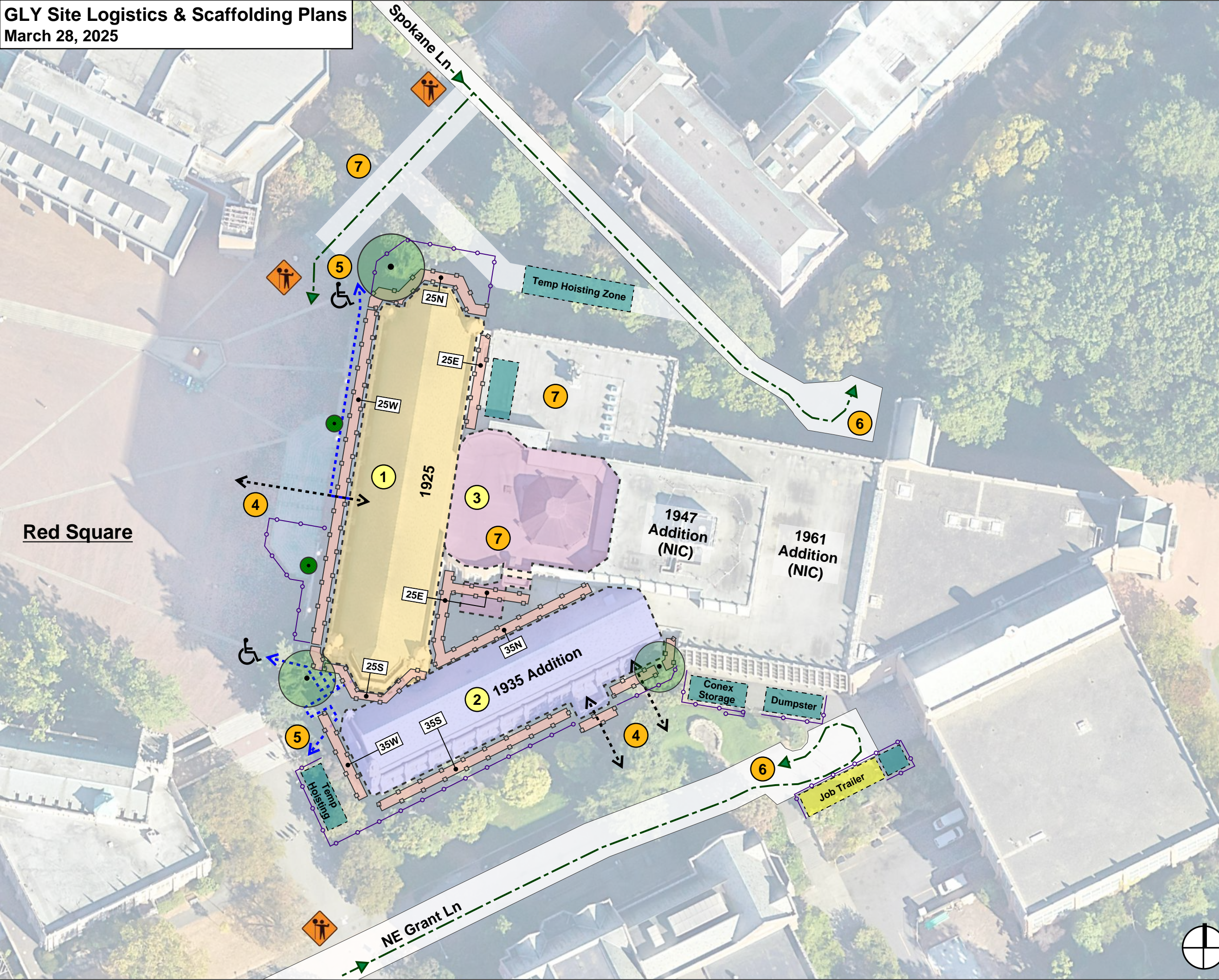
- 1 Zone 1 Work Area
- 2 Zone 2 Work Area
- 3 Zone 3 Work Area
- 4 Maintain & Protect Entry / Exit
- 5 Maintain & Prot. Accessible Exit
- 6 Haul Route
- 7 Protect (E) Roofing

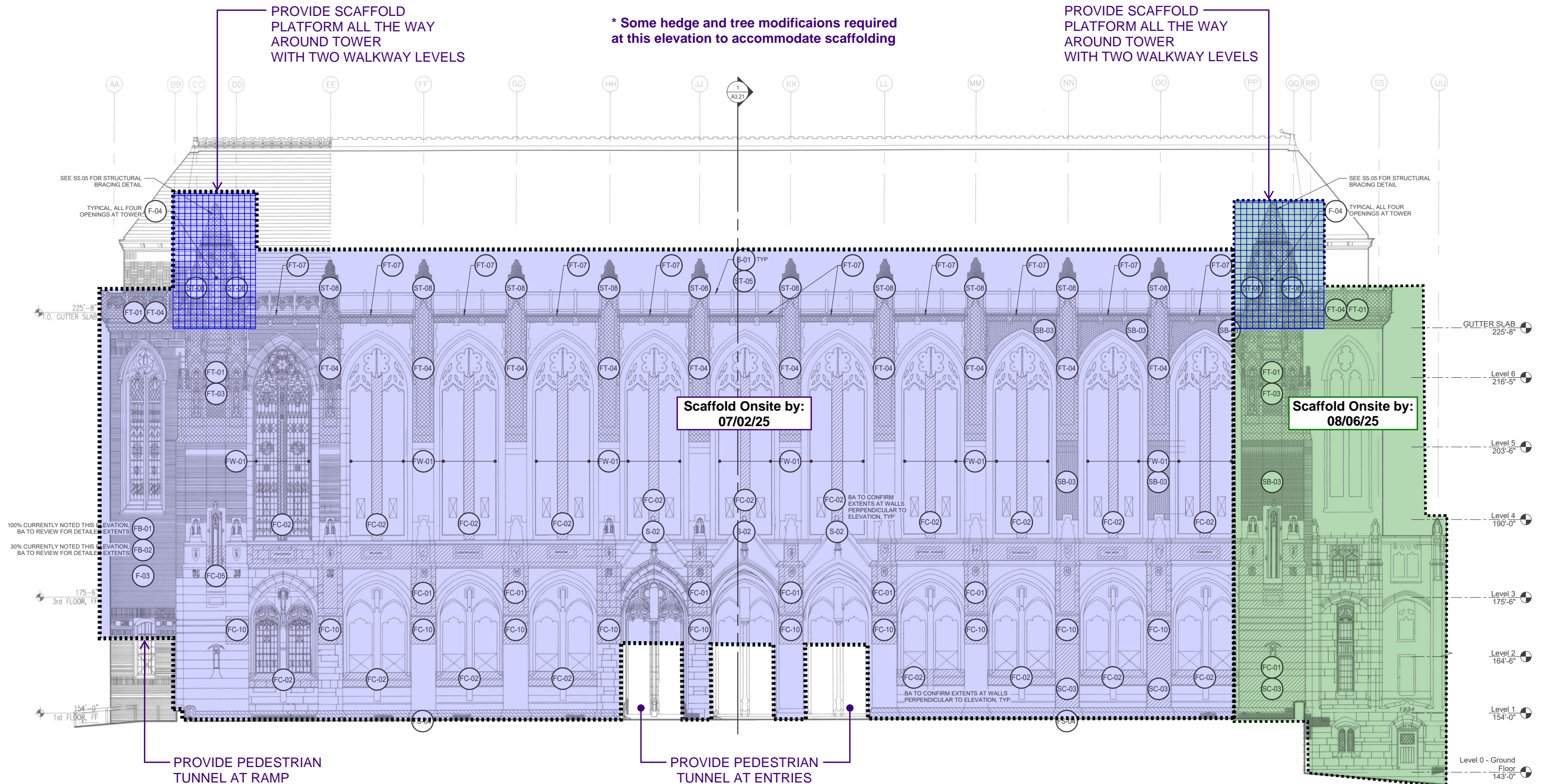
Graphic Legend

- Full-height Netted Scaffolding with Material Hoists
- 25N Building & Facade Designation (refer to scaffolding extents sheets)
- Specimen Tree Bonsai Tree
- Staging / Laydown / Hoisting Area
- Jobsite Trailer/Office
- Flagger
- Construction Fence

General Notes:

1. Work Hours: 6am-2pm M-F
2. Trees & landscaping to be pruned &/or tied back 5' from building facades to receive scaffolding.
3. Schedule deliveries & waste hauling for early AM to minimize impacts to pedestrian circulation & campus activities.
4. Coordinate timing of noisy work as required to limit disruption to interior program activities.
5. Coordinate interior access, work, & associated containment to minimize disruption to internal operations.
6. Erect pedestrian tunnels over pedestrian entrances.
7. Phase work at 1925 Terrace as required to maintain access at half of the entry doors at all times.
8. Provide plywood climbing deterrent at base of scaffolding.
9. Provide scaffold platforms all the way around the 1925 and 1935 Towers. (6) Total.

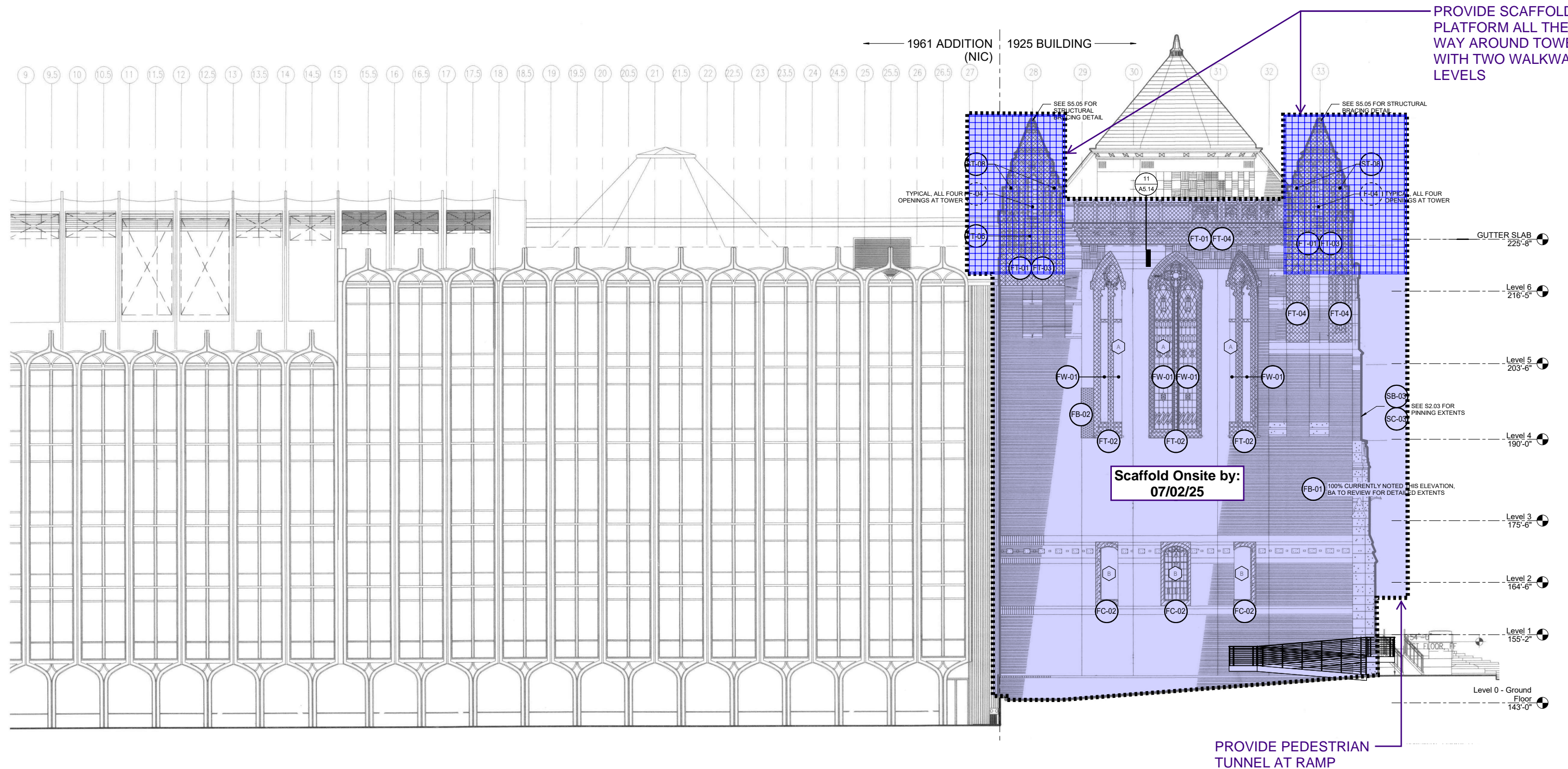




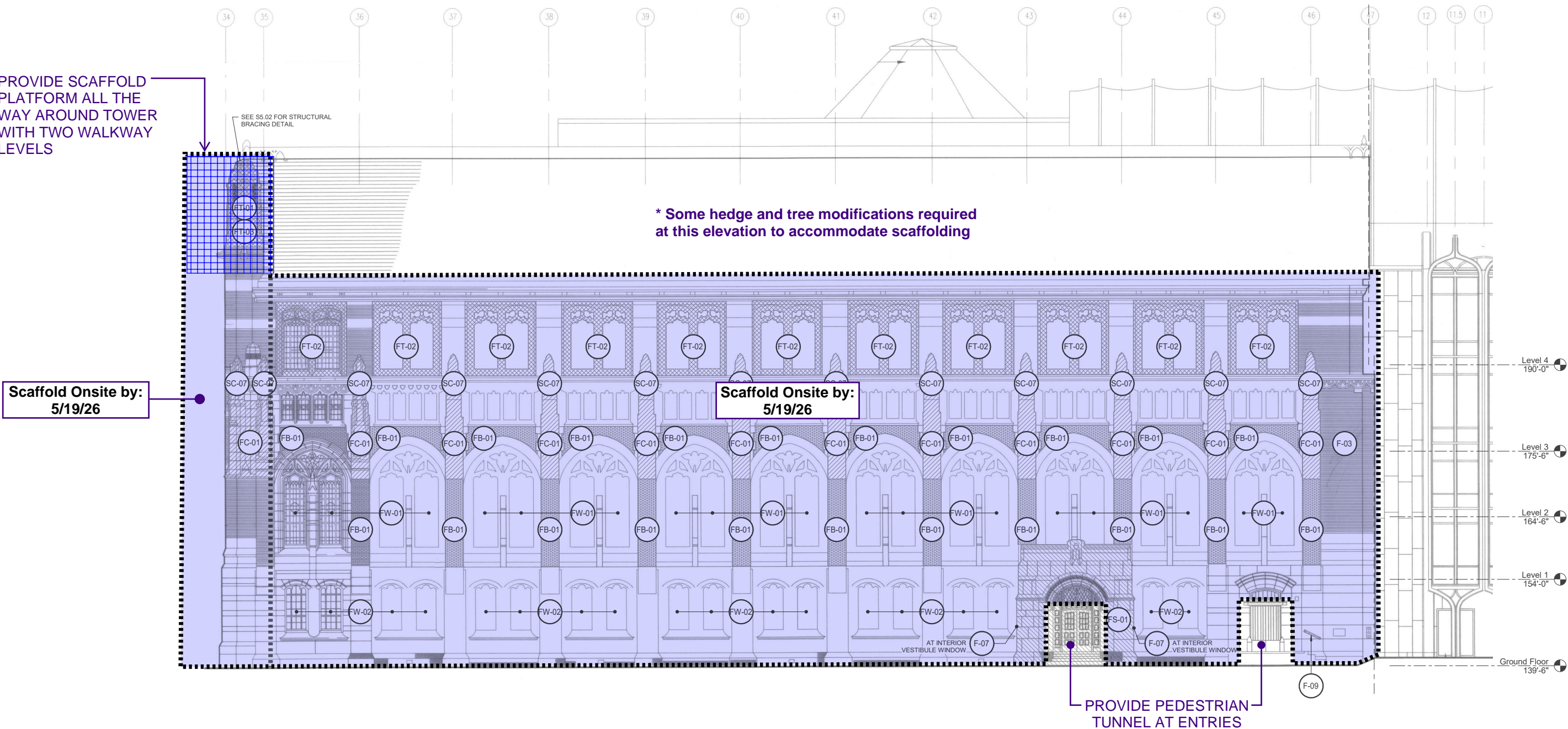
1925 WEST ELEVATION - PROPOSED SCAFFOLDING EXTENTS

* Some hedge and tree modifications required at this elevation to accommodate scaffolding

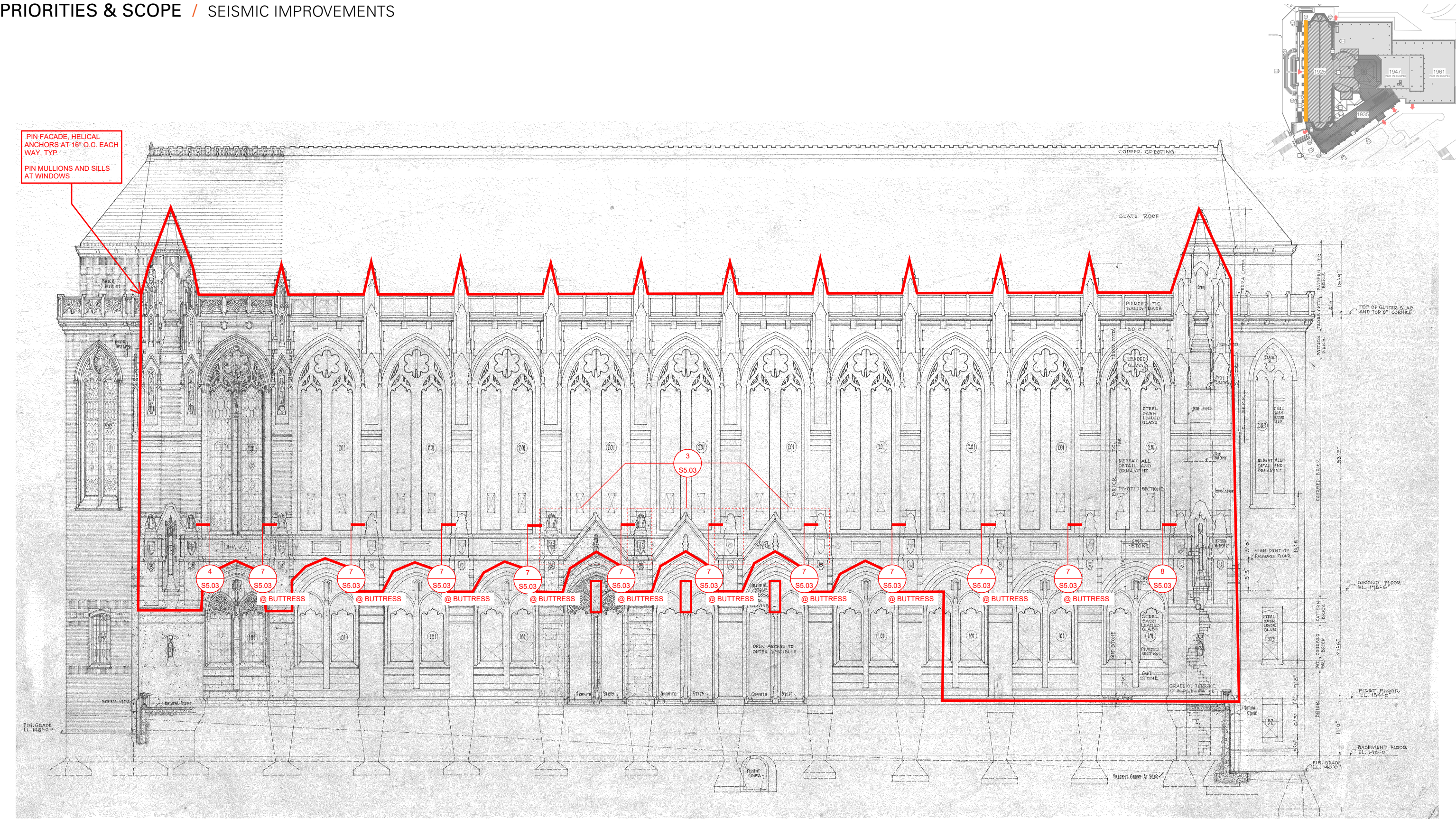
- PROVIDE SCAFFOLD PLATFORM ALL THE WAY AROUND TOWER WITH TWO WALKWAY LEVELS



1925 NORTH ELEVATION - PROPOSED SCAFFOLDING EXTENTS

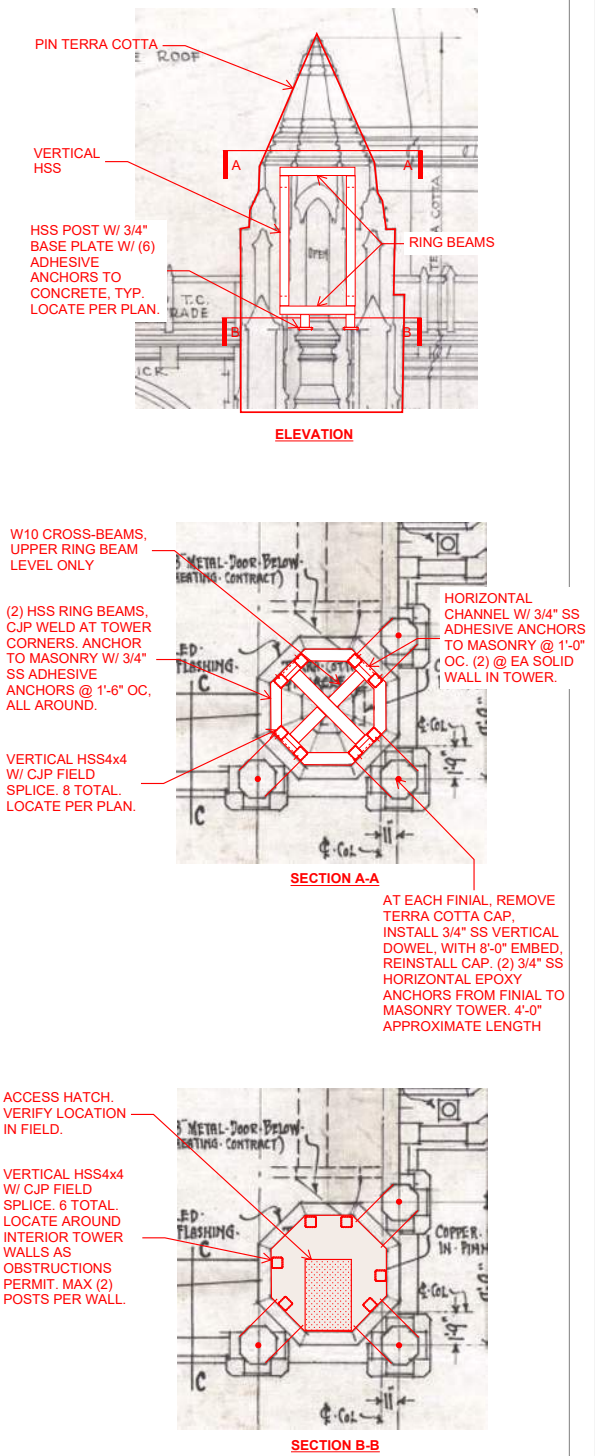
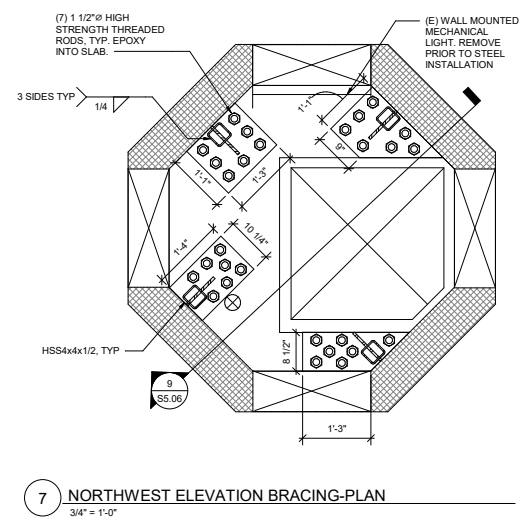
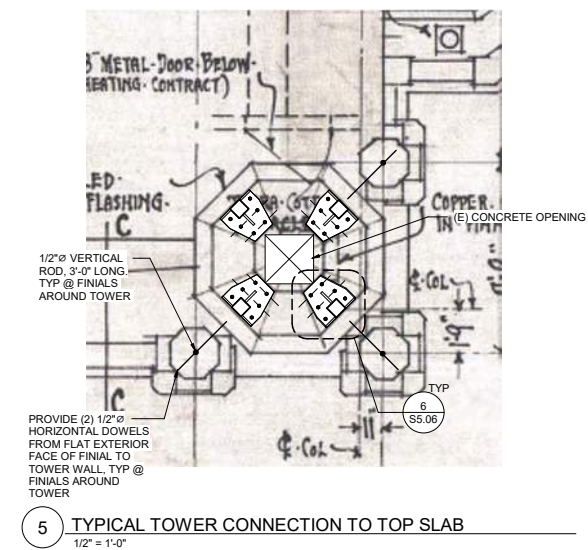
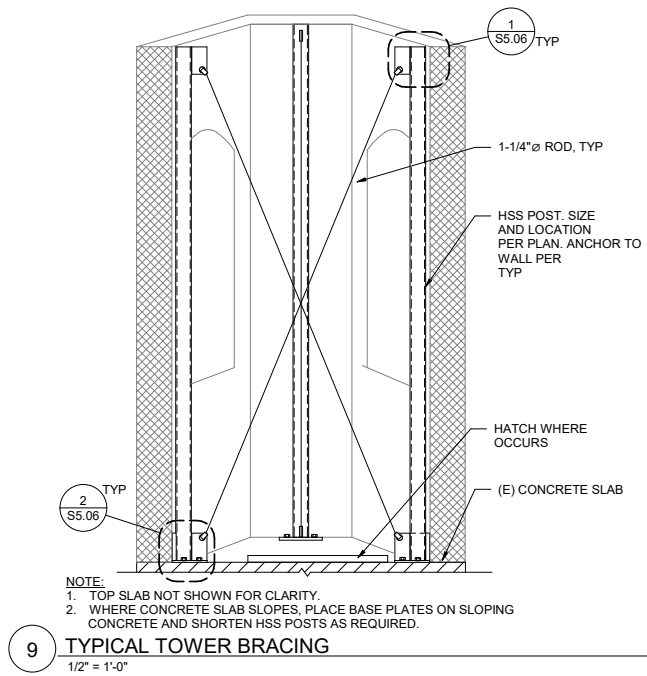


1935 SOUTH ELEVATION - PROPOSED SCAFFOLDING EXTENTS

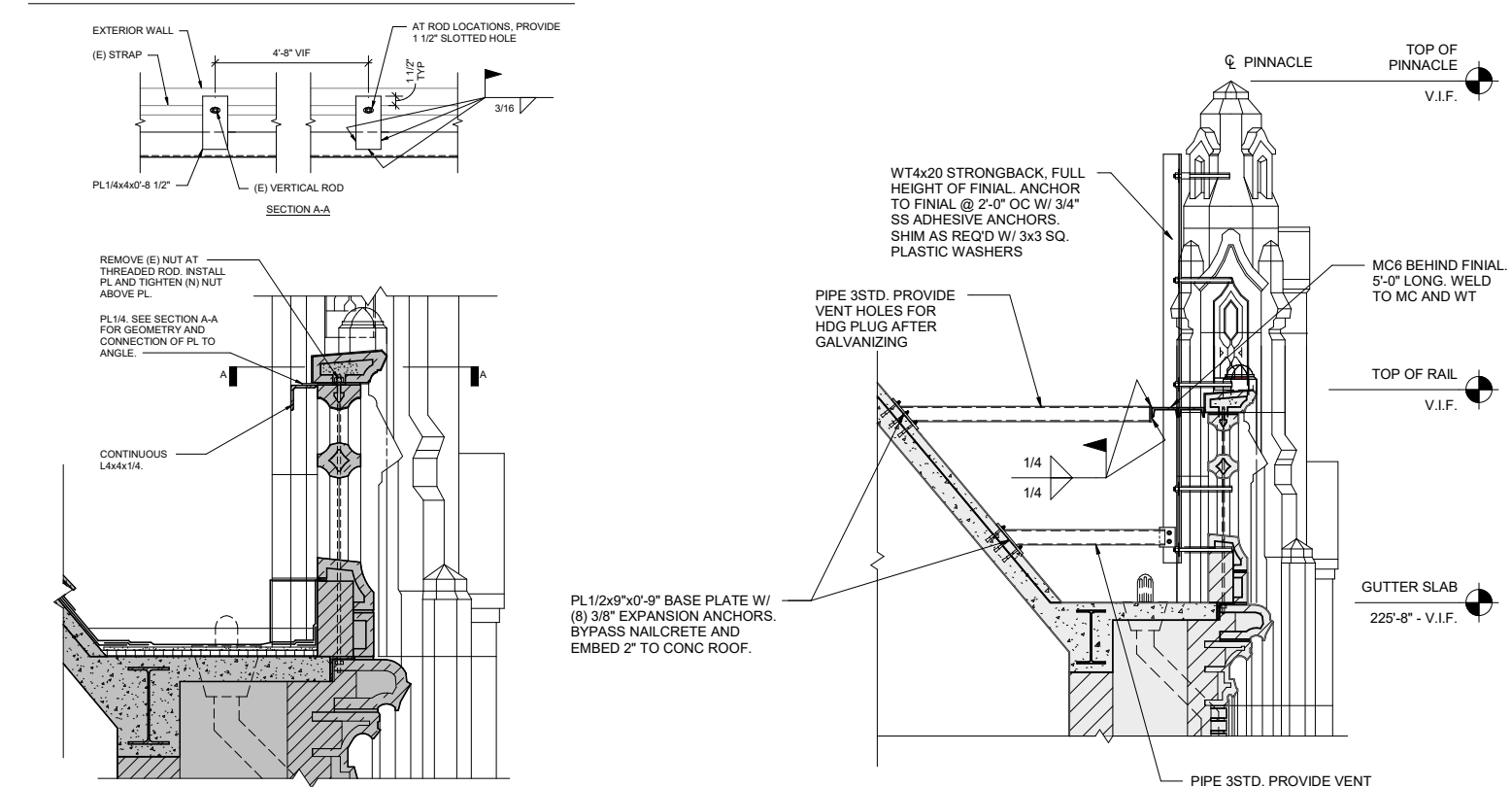


1925 West Facade Seismic Area of Work

PRIORITIES & SCOPE / SEISMIC IMPROVEMENTS - 1925 BUILDING

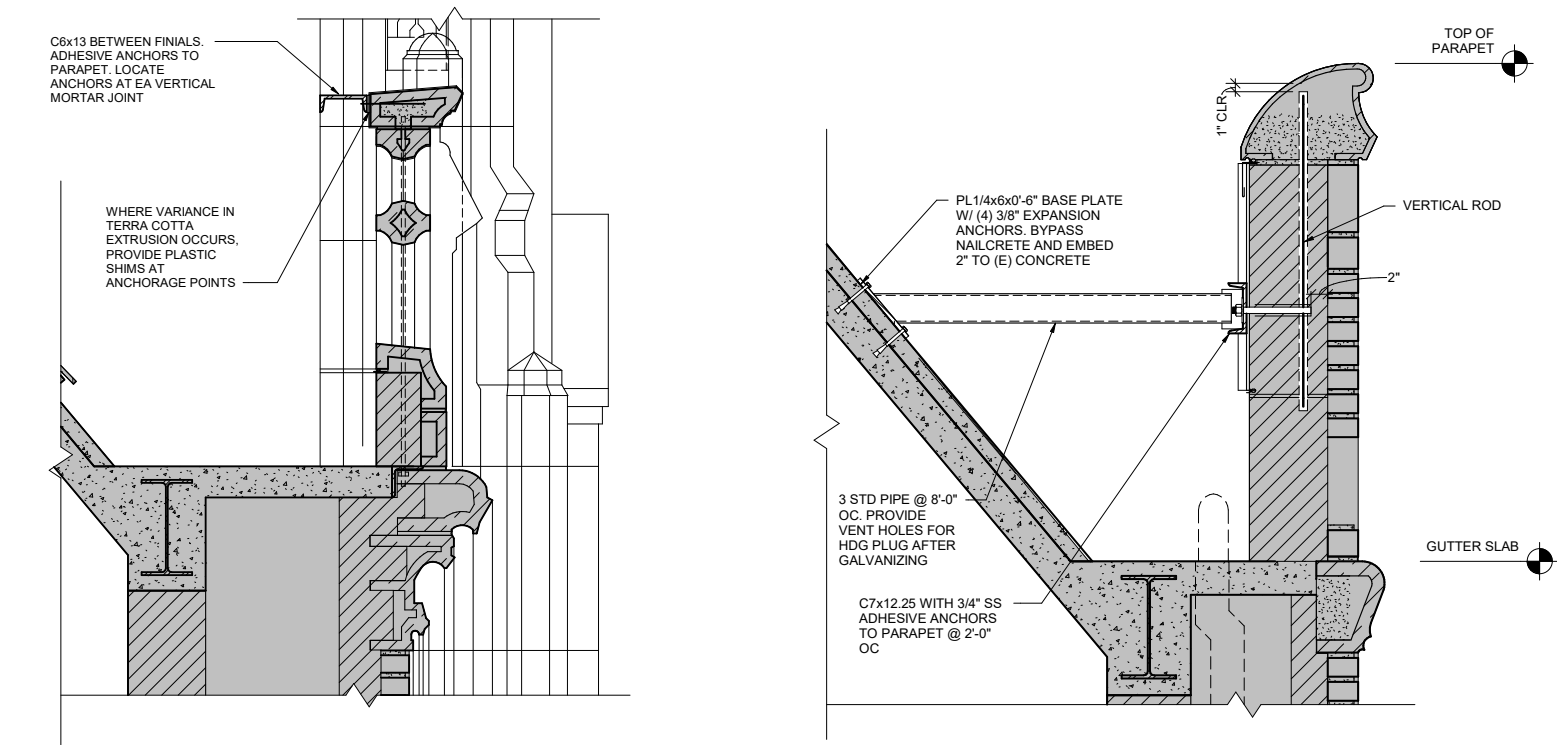


PRIORITIES & SCOPE / SEISMIC IMPROVEMENTS - 1925 BUILDING



10 WEST ELEVATION BALUSTRADE BRACING - OPTION 2
1" = 1'-0"

2 1925 BLDG WEST ELEV ROOF BRACING
1/2" = 1'-0"



4 WEST ELEVATION BALUSTRADE BRACING - OPTION 1
1" = 1'-0"

6 EAST ROOF PAPAPET BRACING
1" = 1'-0"



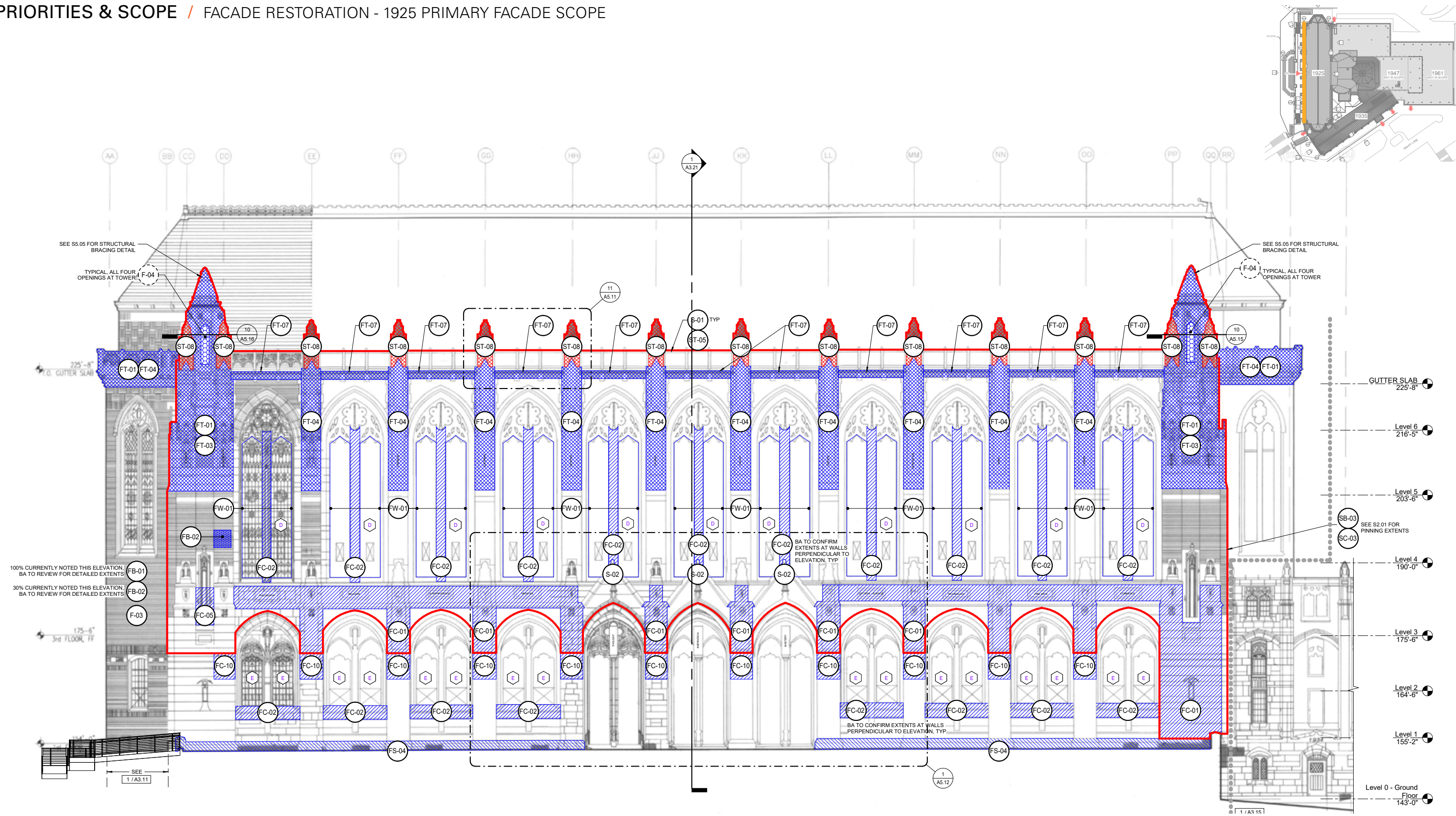
FACADE RESTORATION PRIORITIES

- + Life safety
- + Water infiltration
- + Organic growth
- + Envelope deficiencies
- + Aesthetic appearance

FACADE RESTORATION SCOPE

- + Masonry repointing
- + Masonry replacement
- + Masonry cleaning
- + Masonry resetting
- + Waterproofing

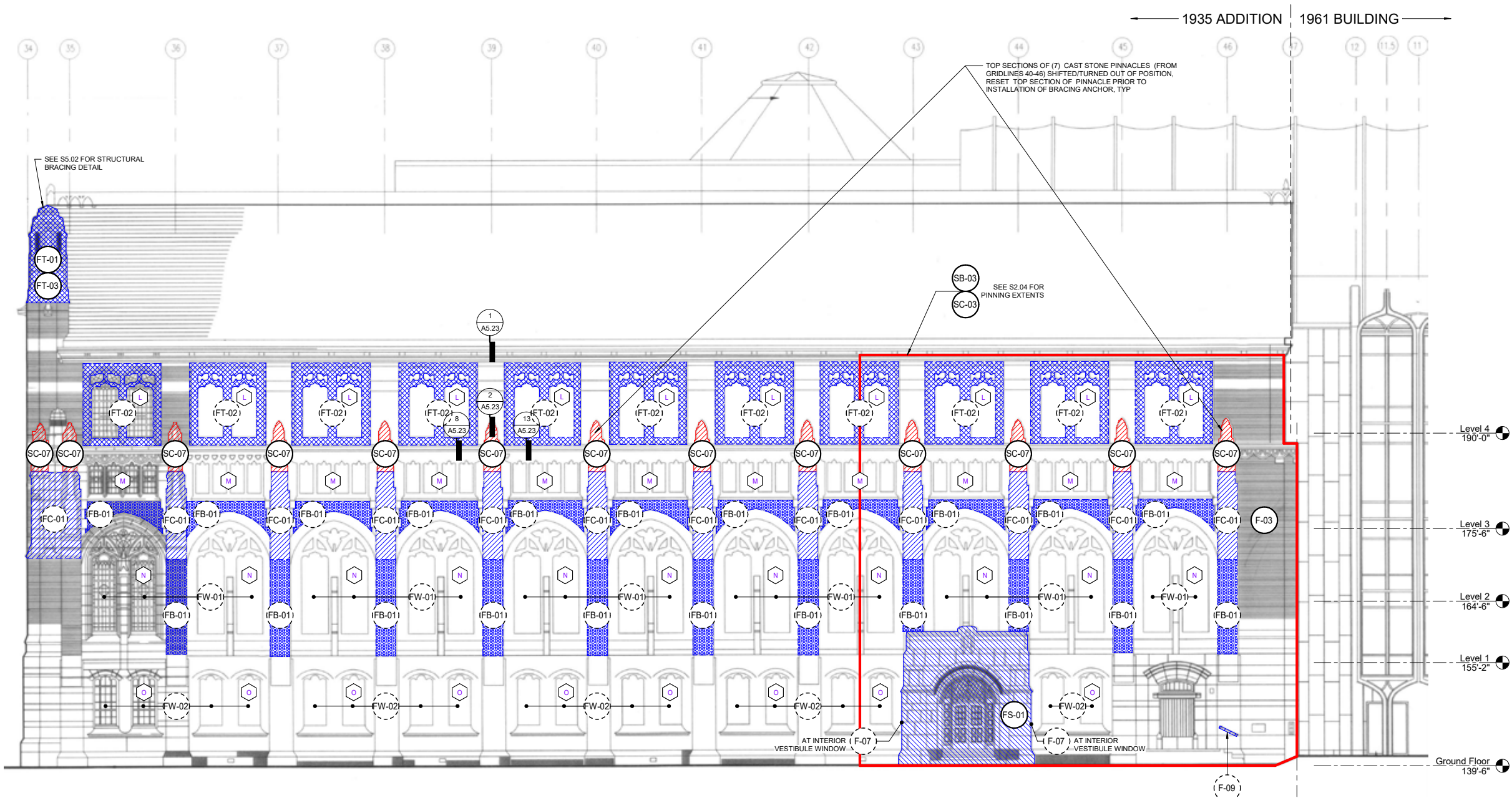
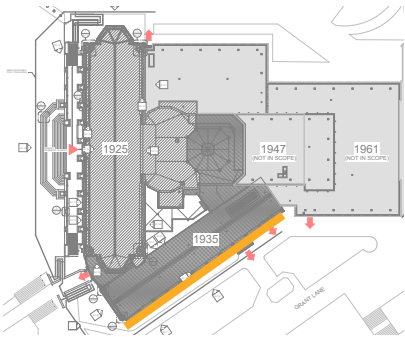




1925 West Facade

Facade Scope

Seismic Scope



1935 South Facade

Facade Scope

Seismic Scope

