

UNIVERSITY *of* WASHINGTON

**University
District Station
Building
CUCAC**

February 8, 2022



University District Station Building

The project will be a partnership between the University of Washington and LPC West. LPC West will lead the development of the 266,000 SF class A office building atop Brooklyn Station. This project will support the transformation of the neighborhood and serve as an elevated gateway to the University of Washington.

UDSB SNAPSHOT

13

Stories

September
2021

Light rail service

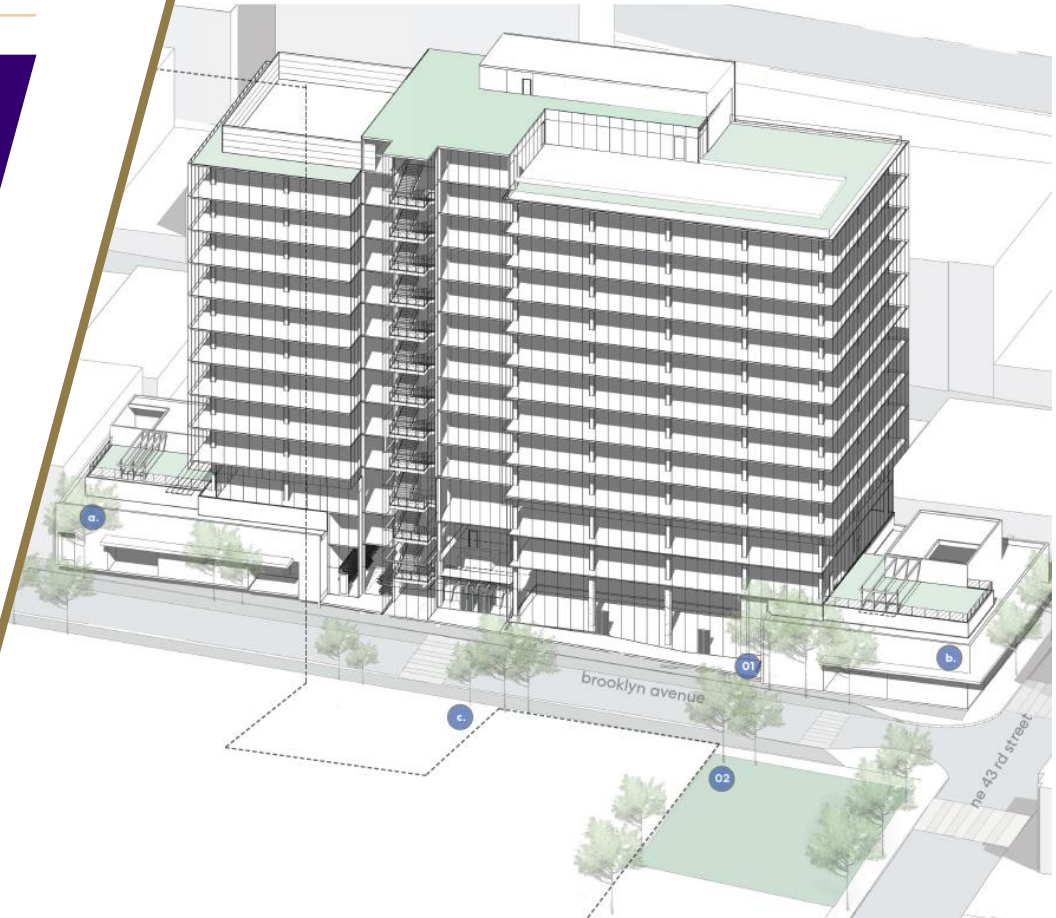
January
2025

Anticipated
occupancy

Approximately 13 administrative departments, consisting of ~800-950 employees are currently being considered for UDSB occupancy.



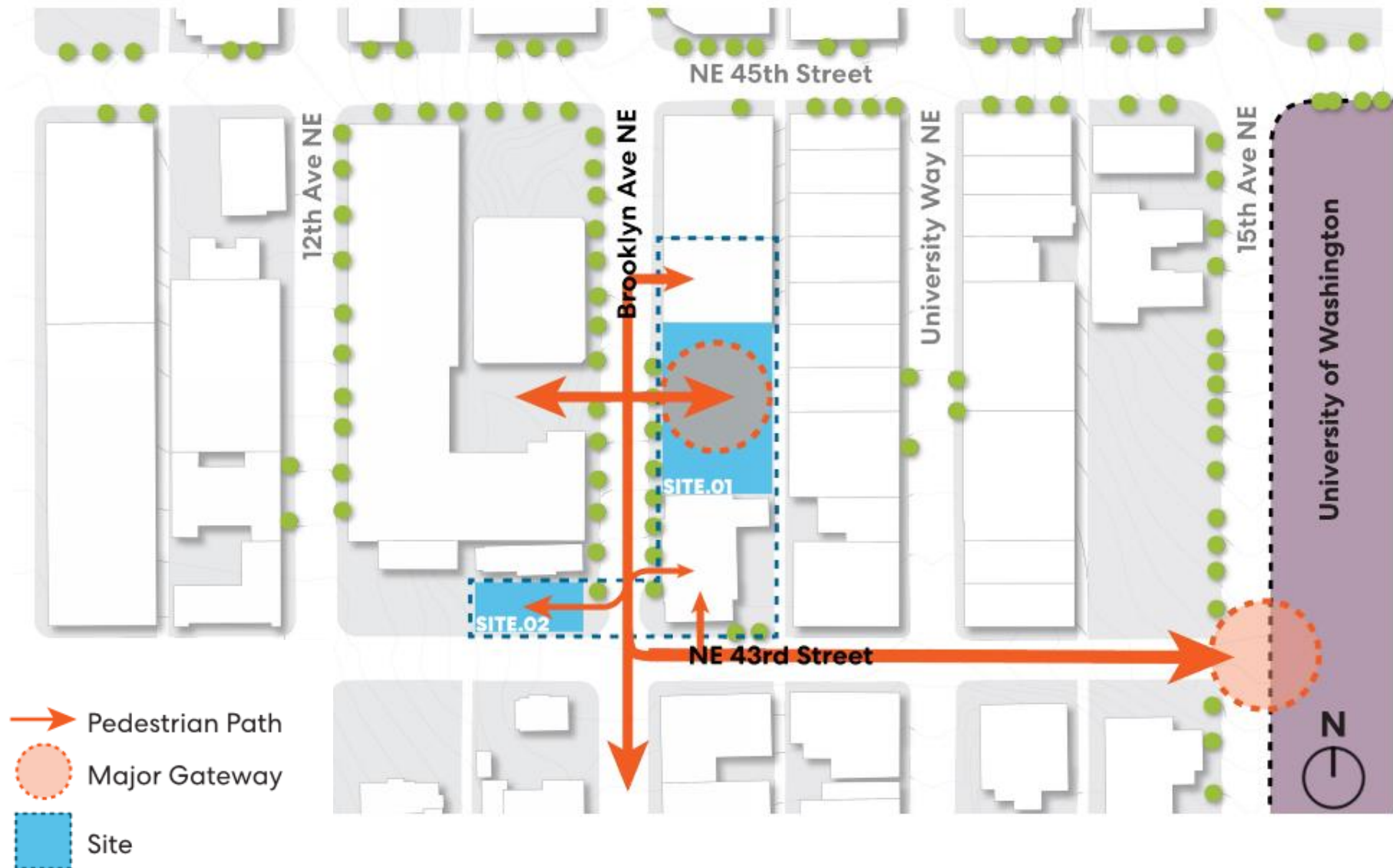
* LBE Certified; ** All supporting consultants will be a part of the Business Inclusion Program, i.e. SBEs, LBEs, WBEs, and MBEs



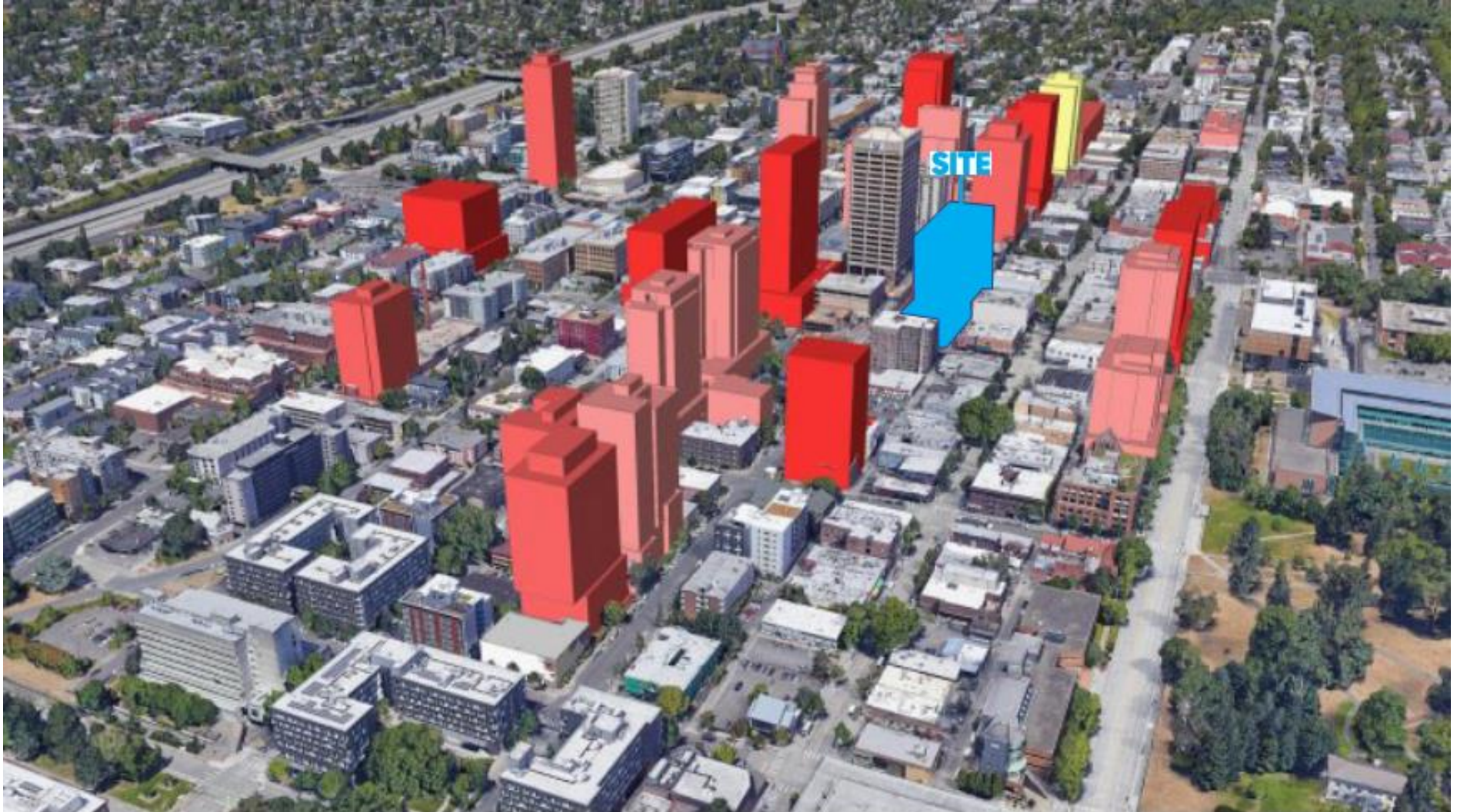
UDSB Goals and Milestone Schedule



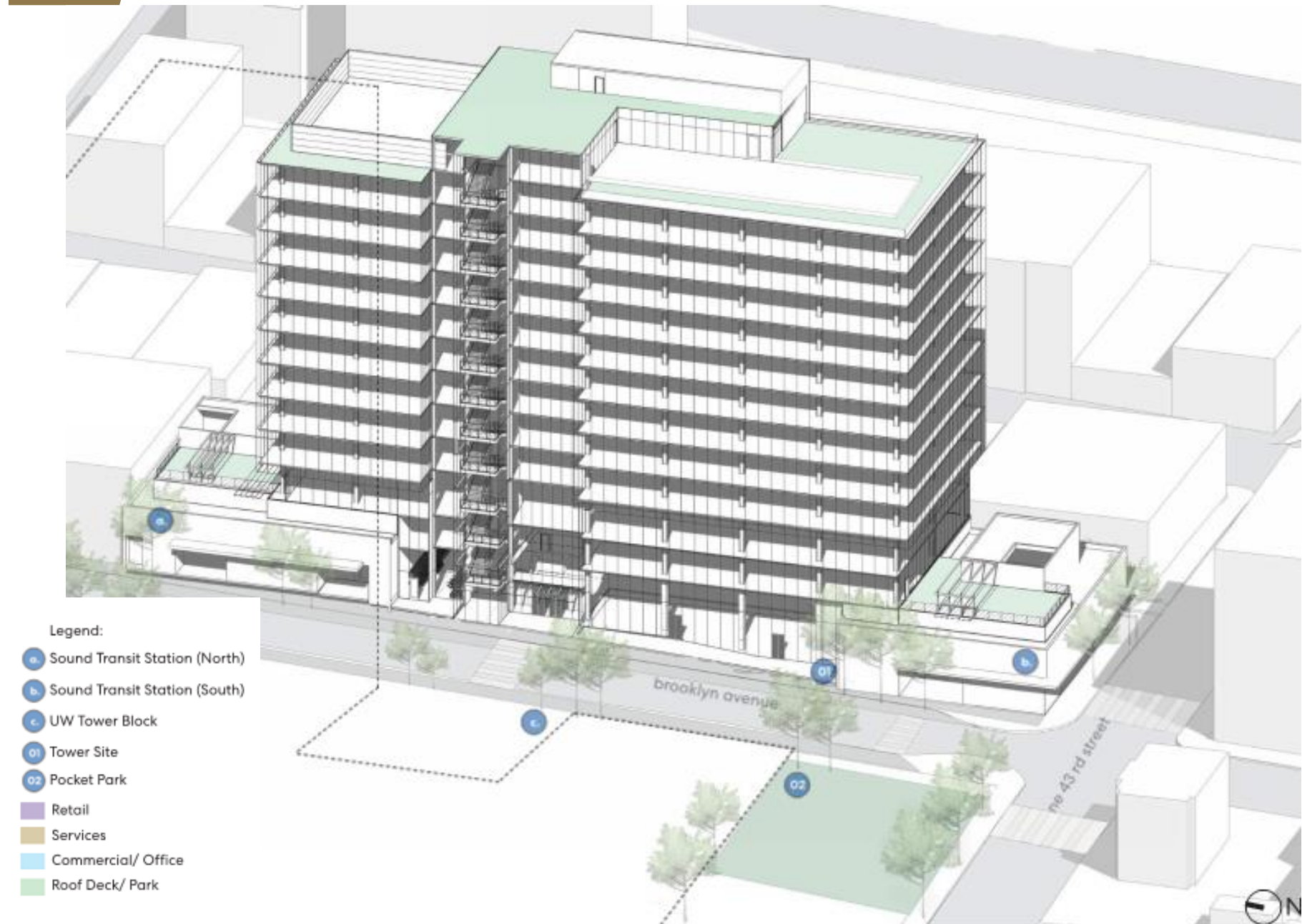
Location and Context Map



Existing Neighborhood and Future Development



Building Massing



Ground Floor Experience



UDSB Entry



Ground Floor



Sound Transit Head House Design

Building Design - Brooklyn Entrance



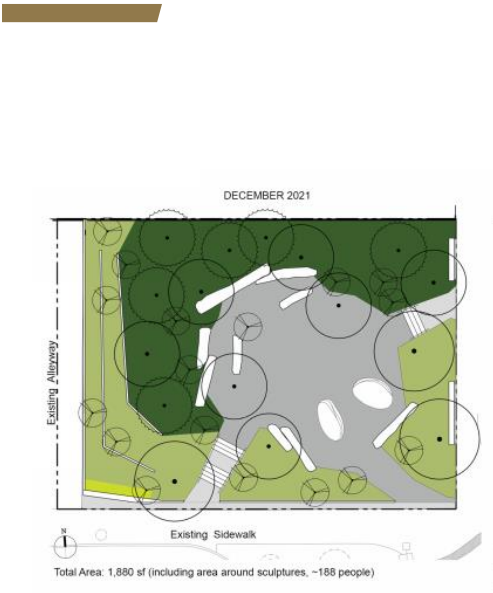
Building Design - View from Brooklyn



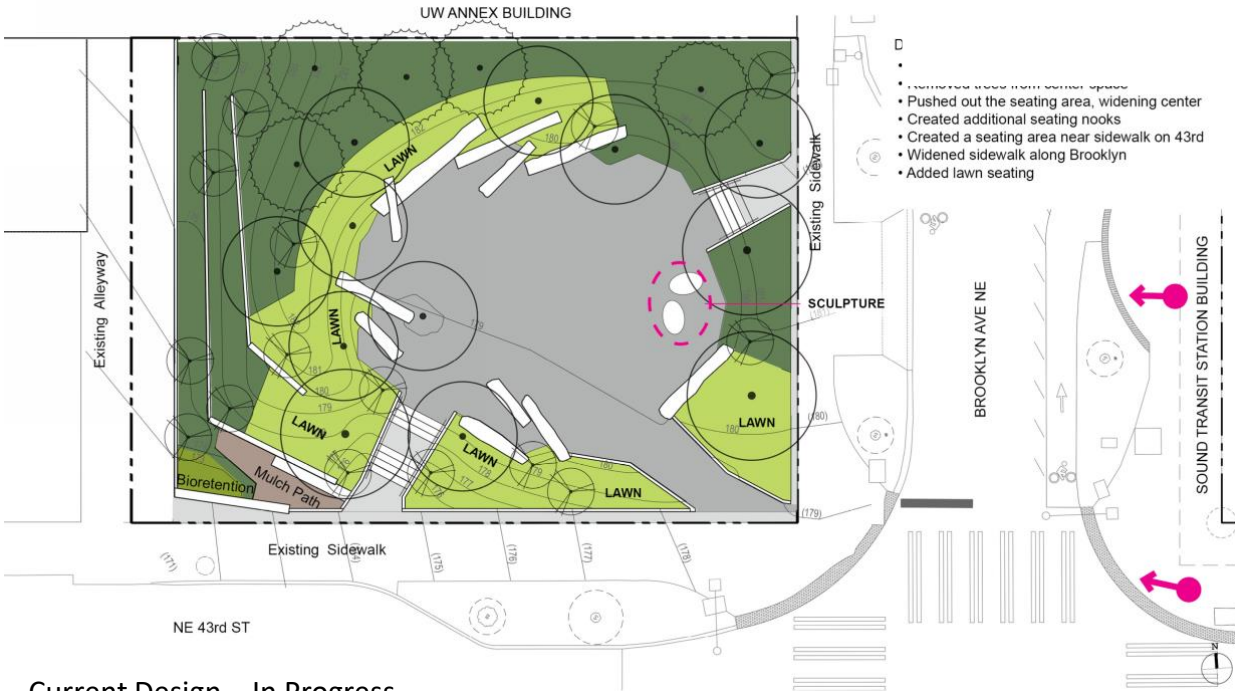
Building Design - View from SE



Pocket Park Design – In Progress



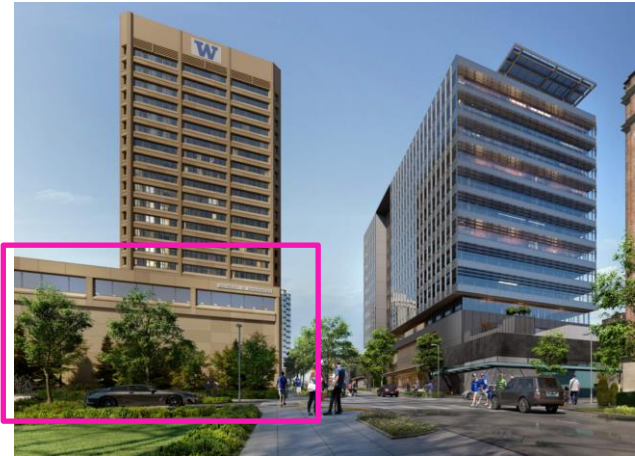
Initial Design



Current Design – In Progress



Pocket Park Section



Context

Questions?

