

Health Sciences  
Education Building  
University of Washington

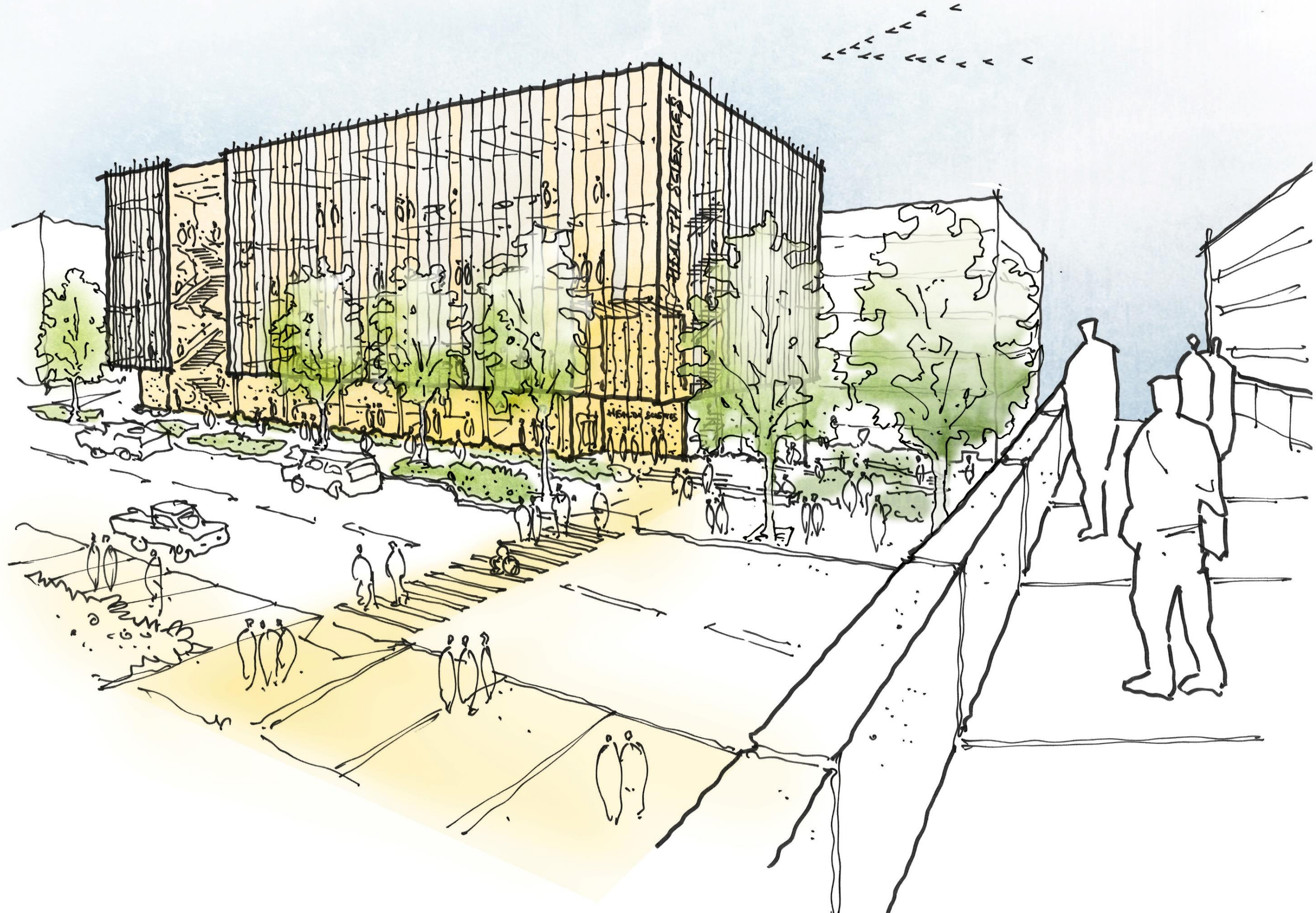
LEWIS / MILLER HULL / SLAM

CUCAC

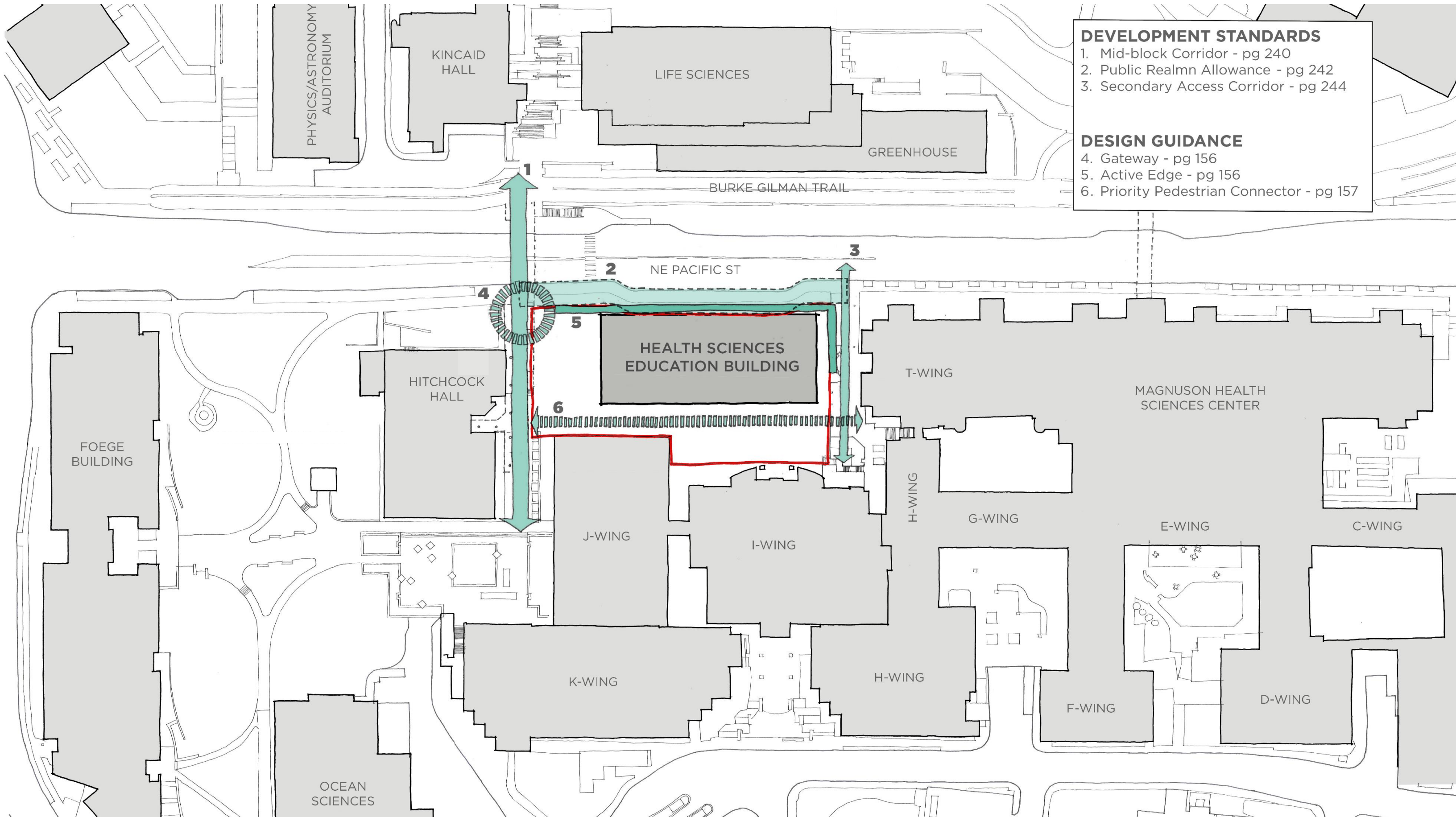
January 14th, 2020

# Project Goals

- Create a hub for the Health Science education and training that **fosters interaction, collaboration, and creativity** for students and the health professional community.
- Build a centrally located Health Sciences Education Building utilizing the unique adjacencies of research, academic, and clinical programs to train future health professionals in support of **affordable, accessible, and high quality 21st Century health care**.
- Create a Health Sciences Education Building with **flexible spaces, modern technologies, and a broad array of environments** that adapt to the changing pedagogical needs of the Health Sciences and enable active and team-based learning.
- Maintain the outstanding performance of UW's Health Science schools by **attracting and retaining the best** health and health care professionals to serve the State of Washington.
- Design the building to enable the Health Sciences campus to **support the goals of the 2019 Campus Master Plan**.

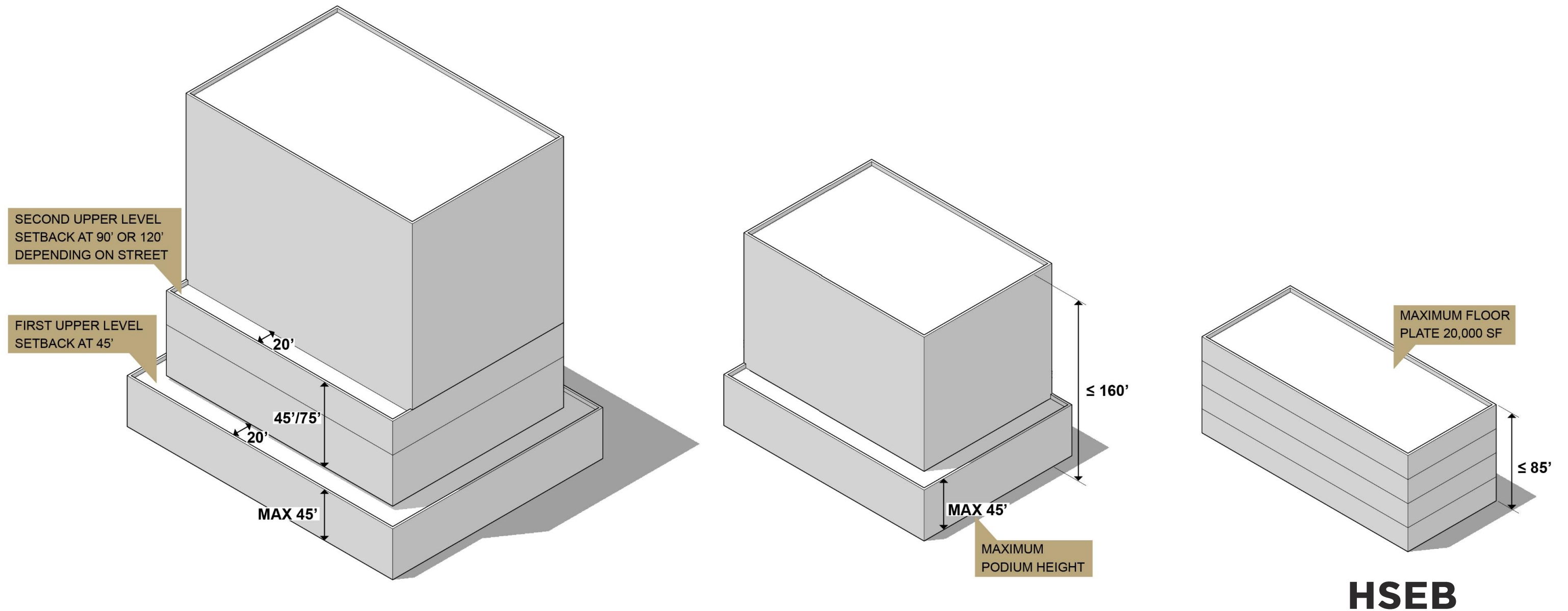


# UW CMP Development Standards + Design Guidance



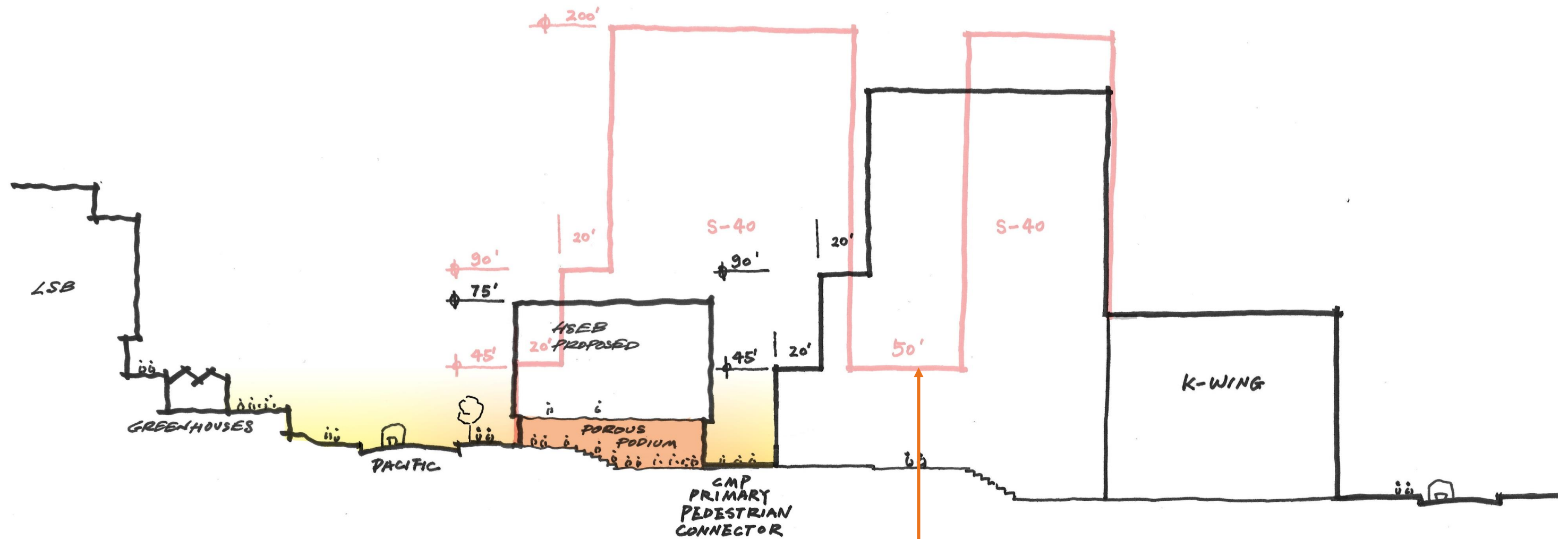
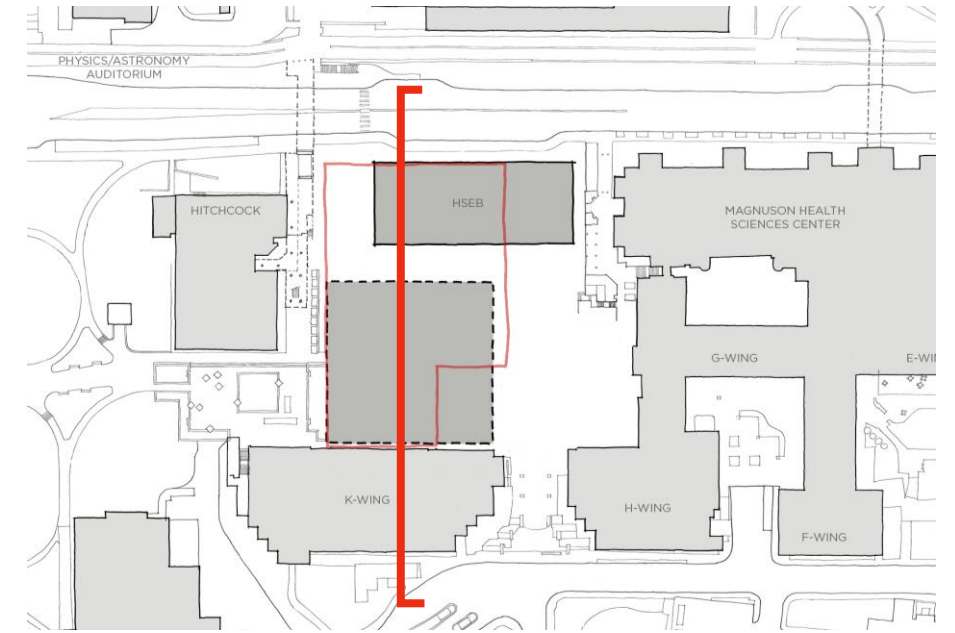
- DEVELOPMENT STANDARDS**
- 1. Mid-block Corridor - pg 240
  - 2. Public Realm Allowance - pg 242
  - 3. Secondary Access Corridor - pg 244
- DESIGN GUIDANCE**
- 4. Gateway - pg 156
  - 5. Active Edge - pg 156
  - 6. Priority Pedestrian Connector - pg 157

# Visualization of Upper Level Setbacks + Impact on HSEB



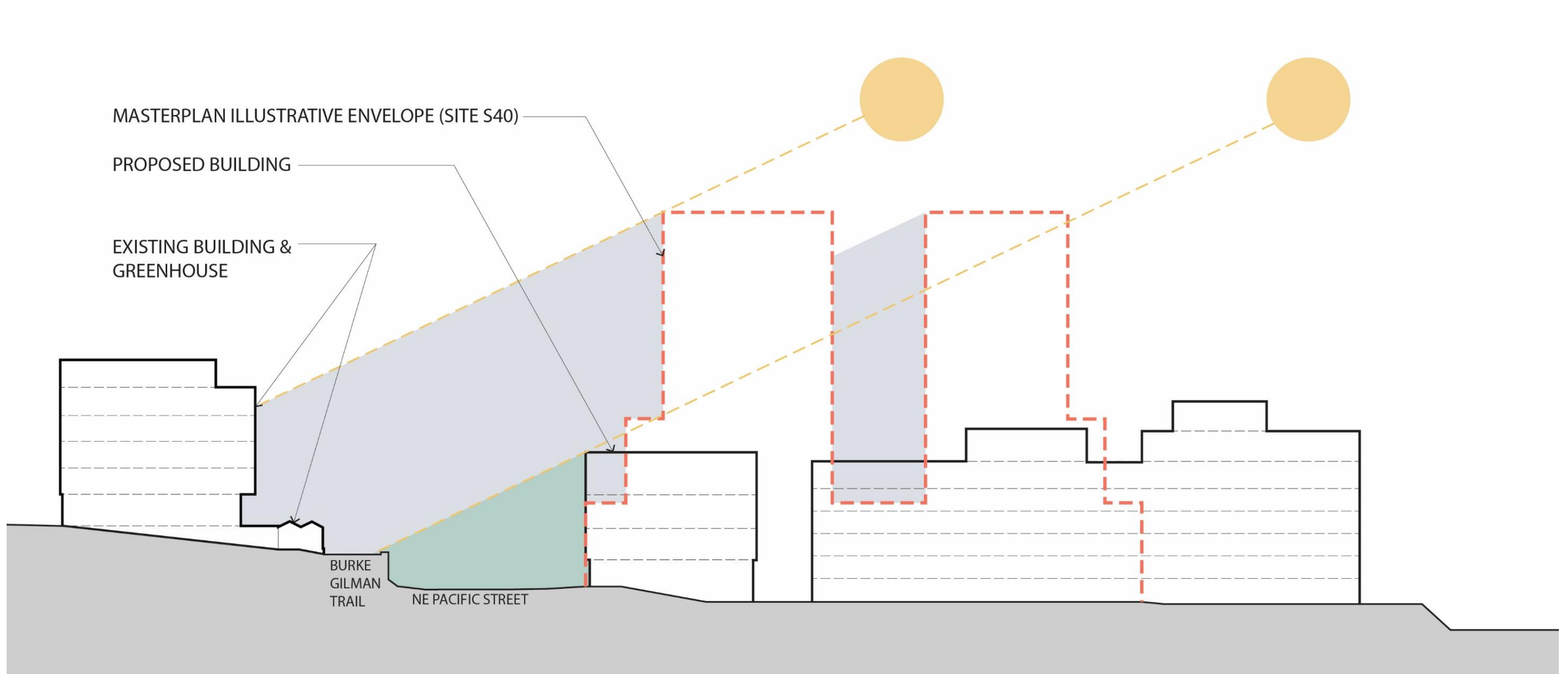
Proposed Site-Specific Master Plan Amendment (under review by SDCI Director)  
No upper level setback is required for a structure fronting NE Pacific Street in Site S40 as long as the building is less than 85 feet in height, has a building footprint less than 20,000 square feet, and meets other CMP development standards.

# S40 Future Development



RED LINE = ILLUSTRATIVE OUTLINE OF POTENTIAL S40 DEVELOPMENT ENVELOPE WITH TWO TOWER STRUCTURES WITH UPPER LEVEL SETBACKS

# UW CMP Development Standards



MASTERPLAN ILLUSTRATIVE ENVELOPE (SITE S40)

PROPOSED BUILDING

EXISTING BUILDING &  
GREENHOUSE

BURKE  
GILMAN  
TRAIL

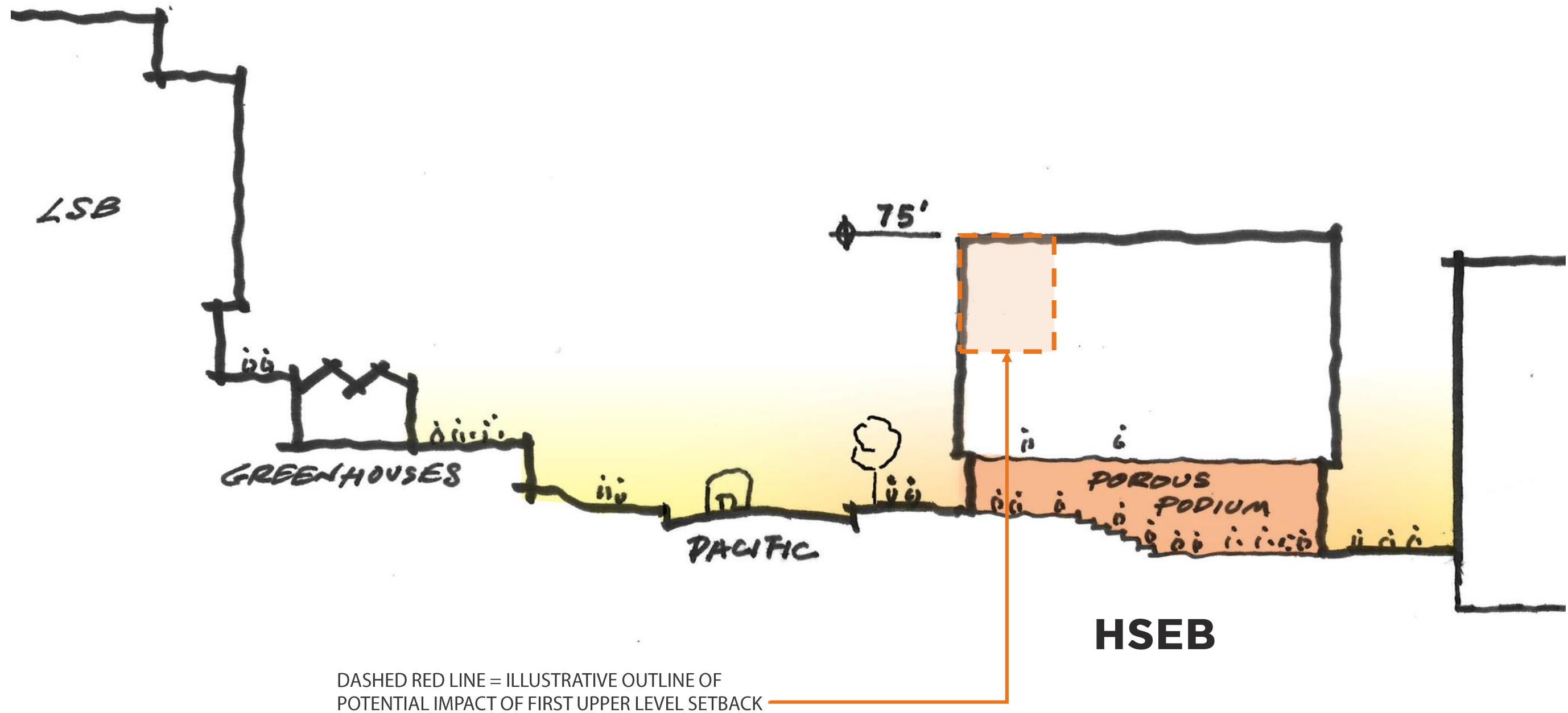
NE PACIFIC STREET

SHADOW CAST BY ILLUSTRATIVE ENVELOPE FOR SITE S40  
AT NOON ON WINTER SOLSTICE

SHADOW CAST BY PROPOSED BUILDING  
AT NOON ON WINTER SOLSTICE

RED LINE = ILLUSTRATIVE OUTLINE OF POTENTIAL S40 DEVELOPMENT  
ENVELOPE WITH TWO TOWER STRUCTURES WITH UPPER LEVEL SETBACKS

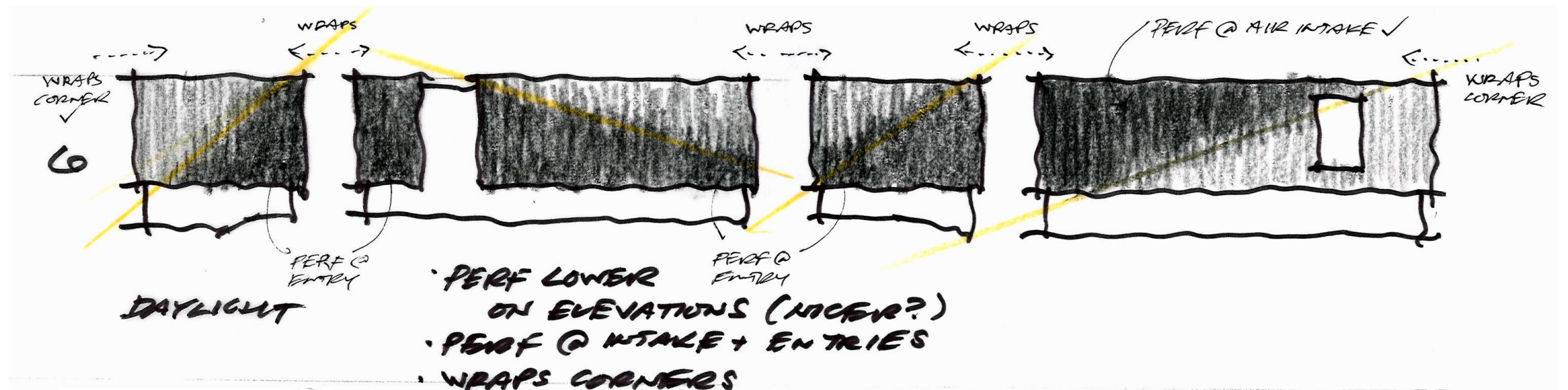
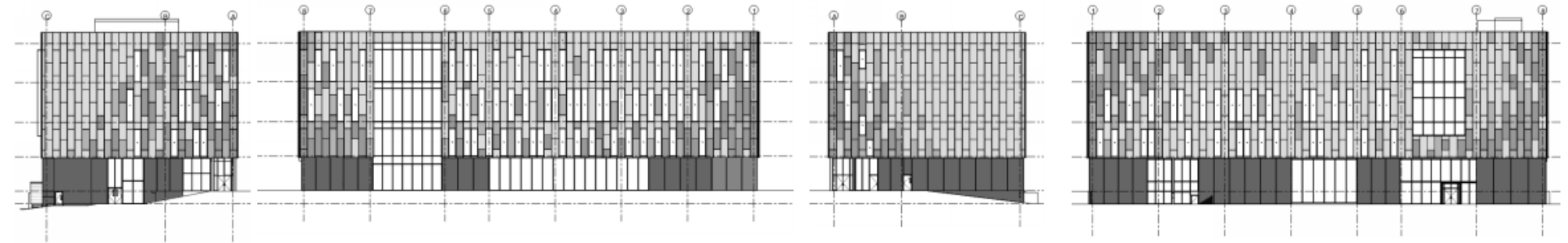
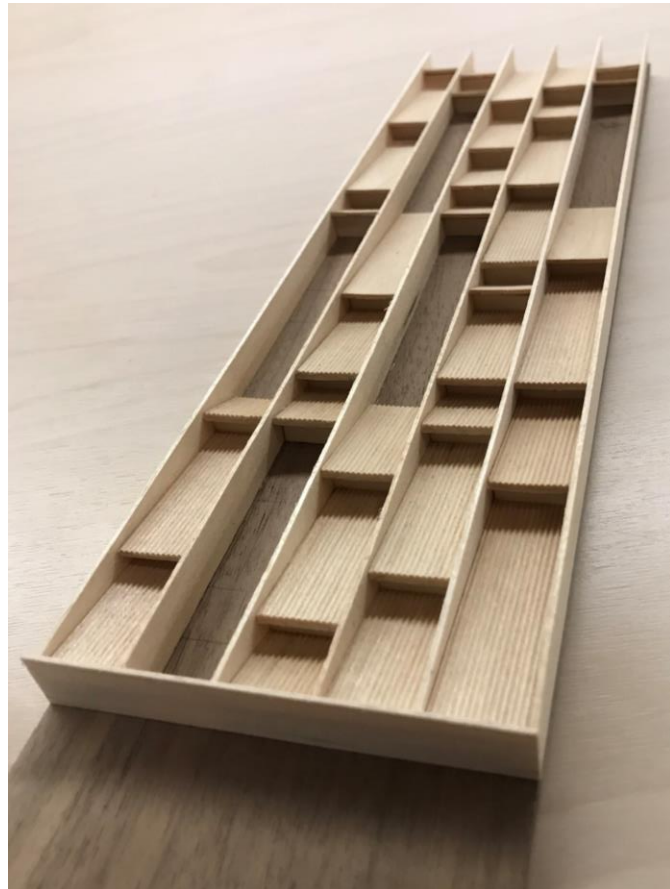
# Proposed Building Height and Mass



Proposed Site-Specific Master Plan Amendment (under review by SDCI Director)  
No upper level setback is required for a structure fronting NE Pacific Street in Site S40 as long as the building is less than 85 feet in height, has a building footprint less than 20,000 square feet, and meets other CMP development standards.



# Texture of Exterior Envelope to Break Down Mass



Create visual interest and break down apparent mass of building

