



CLIMATE PLEDGE ARENA
PLAZA STATUES LANDMARKS CofA SUBMISSION

JULY 18, 2024

CLIMATE PLEDGE
ARENA

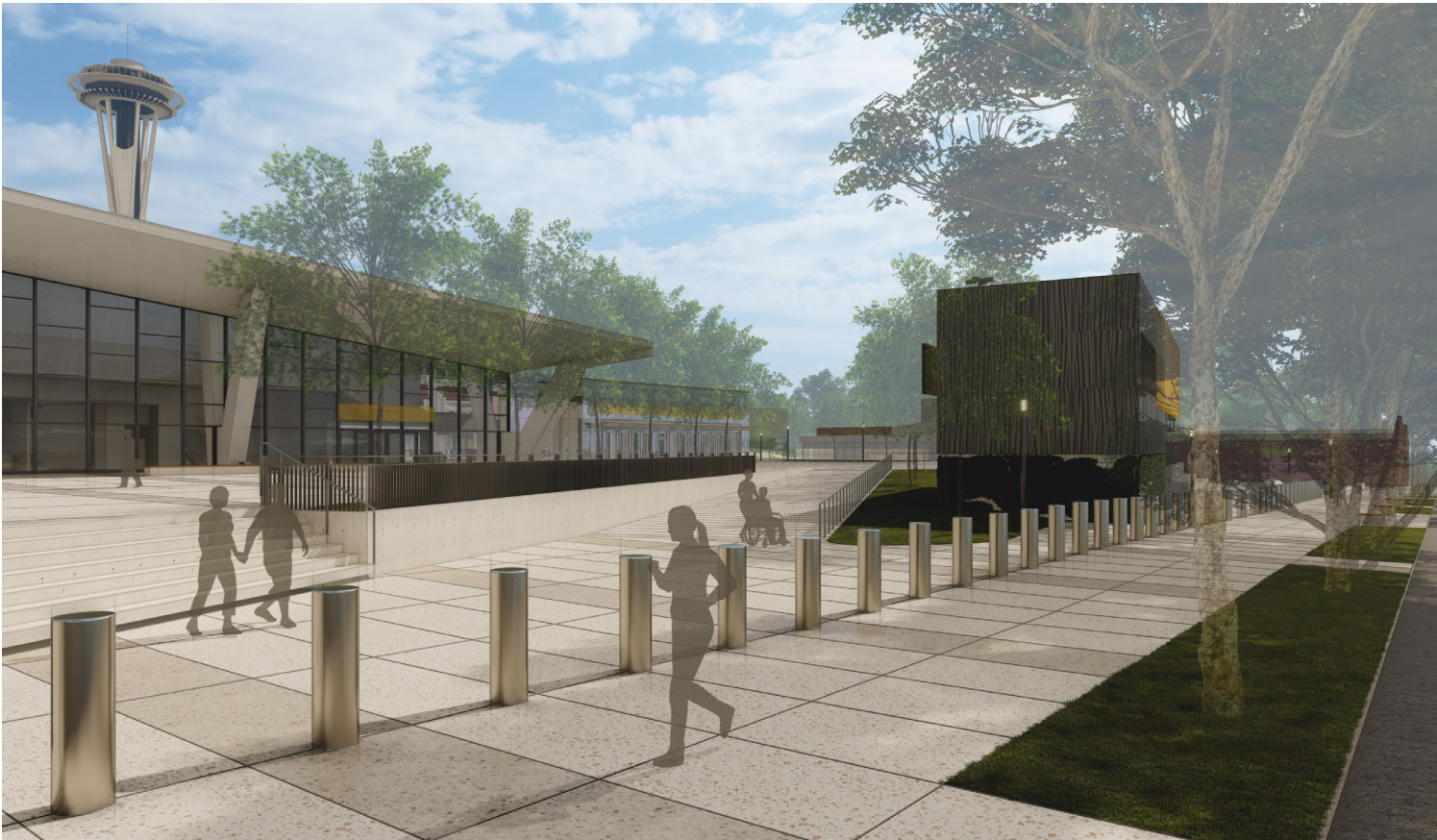
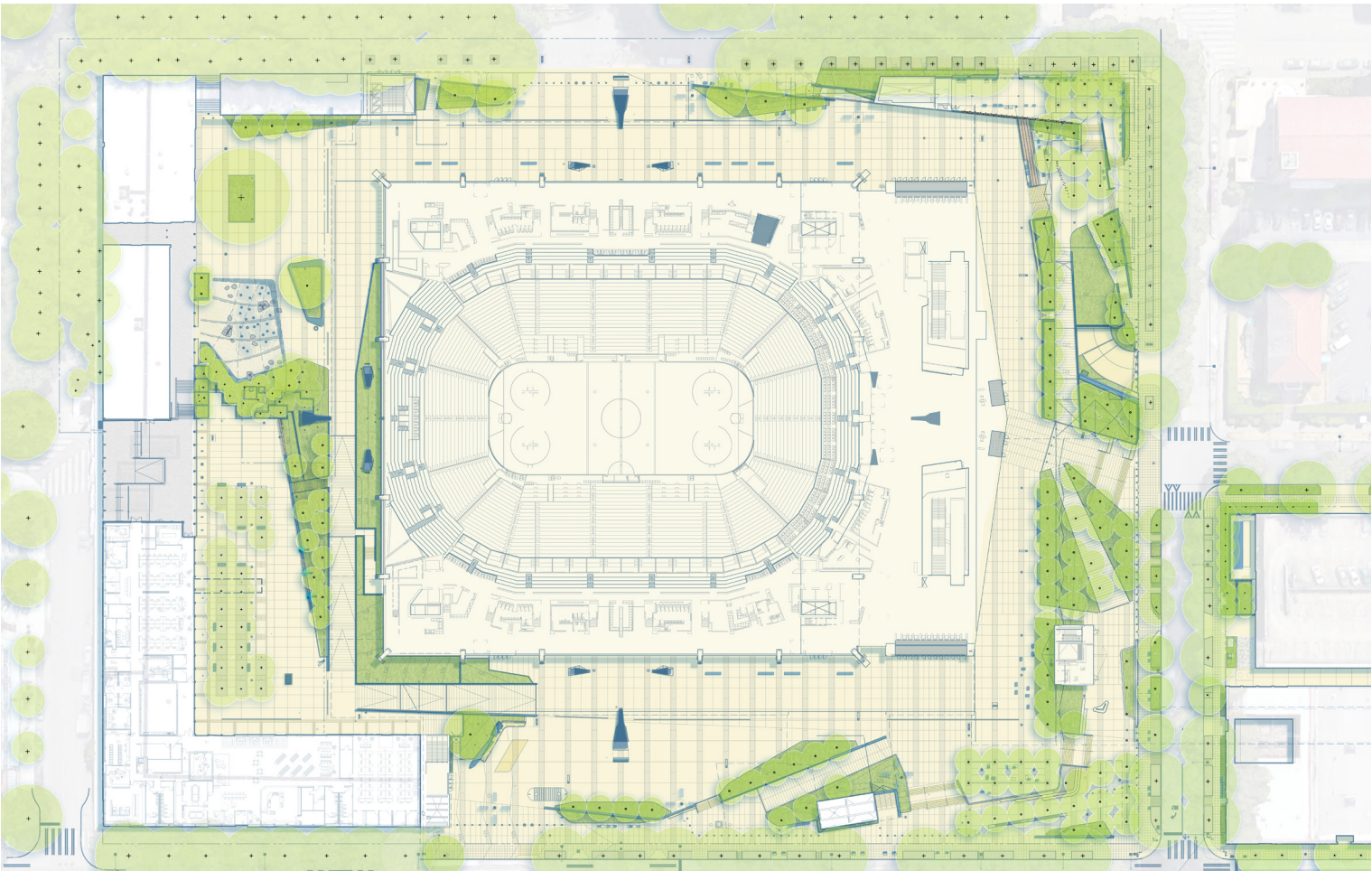
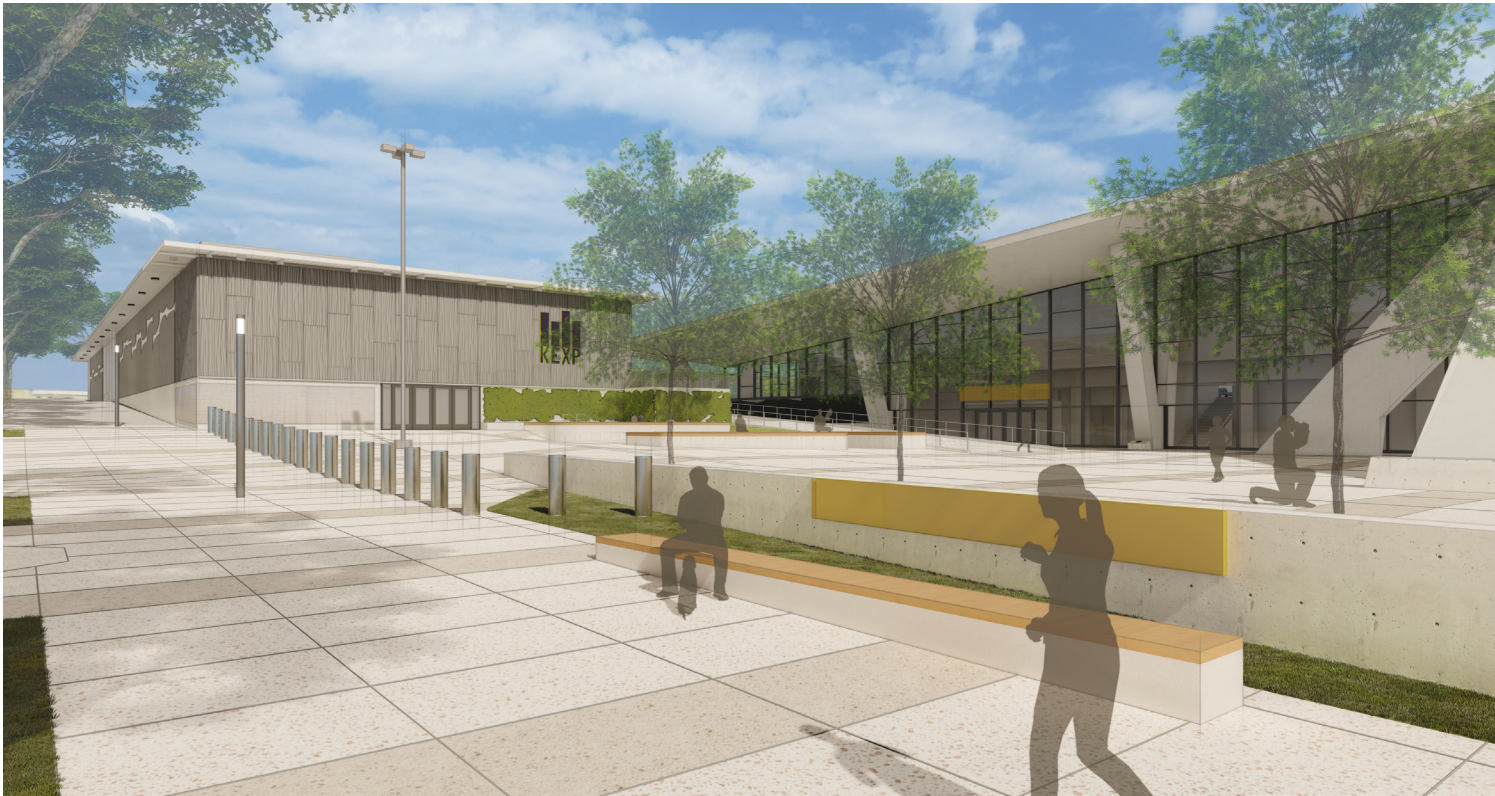
POPULOUS

SWIFT COMPANY LLC



CPA PLAZA STATUES LANDMARKS CofA SUBMISSION

Previously Approved Climate Pledge Arena Plaza Design



Summary of Current Plaza Statues Proposal

This proposal aims to integrate new commemorative statues in the plaza of Climate Pledge Arena and considers location, style, quantity, dimensions, integral lighting, an architectural base or pedestal, and materials.

Proposed Statue Design Parameters

STATUE QUANTITY: two (2) statues

STATUE TYPE: traditional

PEDESTAL TYPE: tapered edge design

PEDESTAL DIMENSIONS: *(see detail on page 17)*

PEDESTAL MATERIAL: concrete material, intended to match color and appearance of existing concrete site furnishings

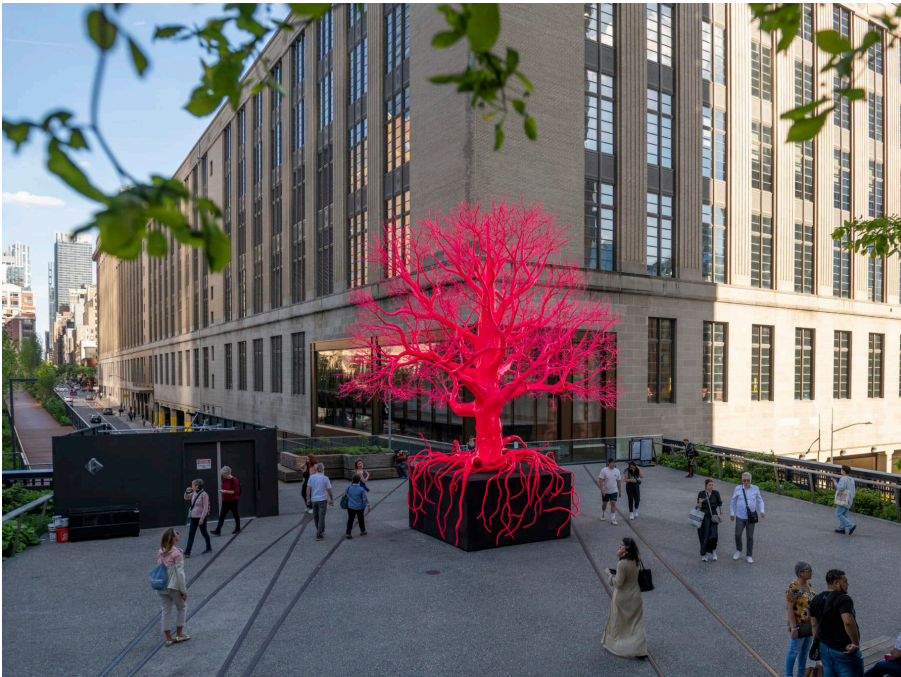
STATUE HEIGHT: approximately 7'-0" tall statue figures (statue height is in addition to pedestal height)

STATUE MATERIAL: marine silicone bronze

LIGHTING: uplighting in statue pedestal

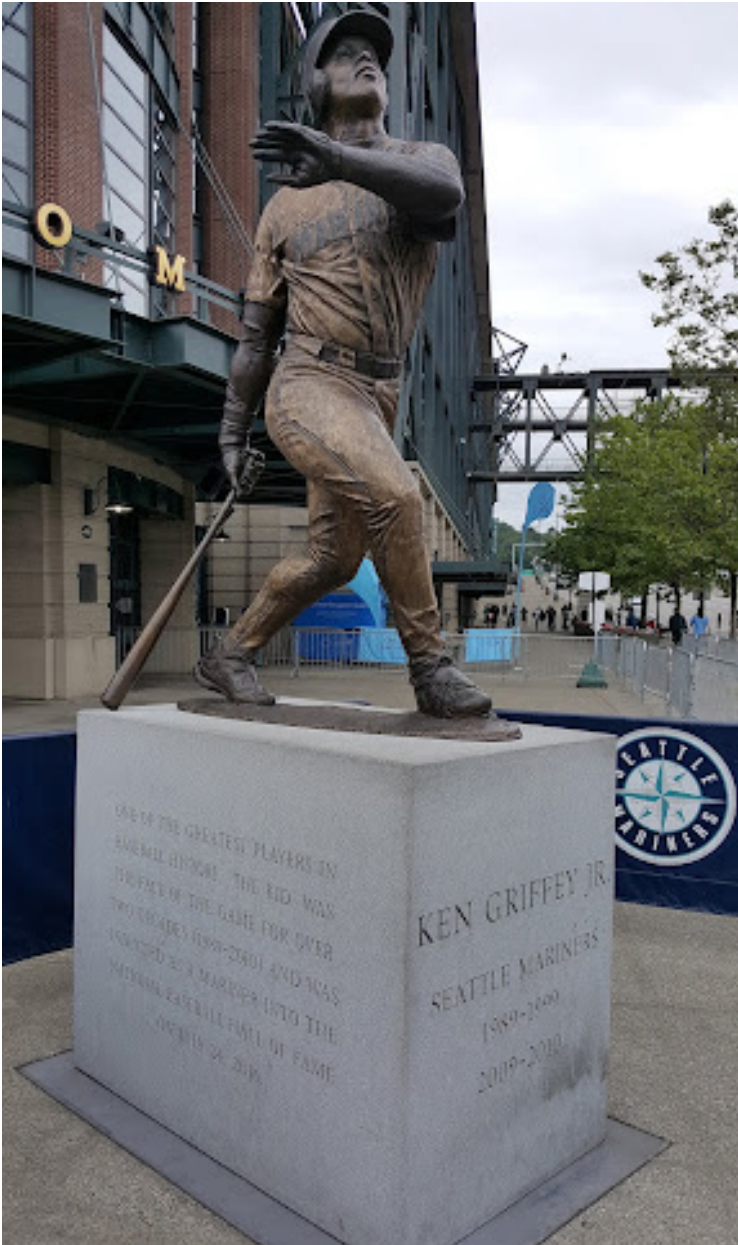
ATTACHMENT METHOD: no mechanical attachment to plaza, pedestals to rely on gravity and friction to remain in place

OTHER FEATURES: name/identification plaque or engraving integrated into statue pedestals



CPA PLAZA STATUES LANDMARKS CofA SUBMISSION

Traditional Statue Precedents (Proposed)

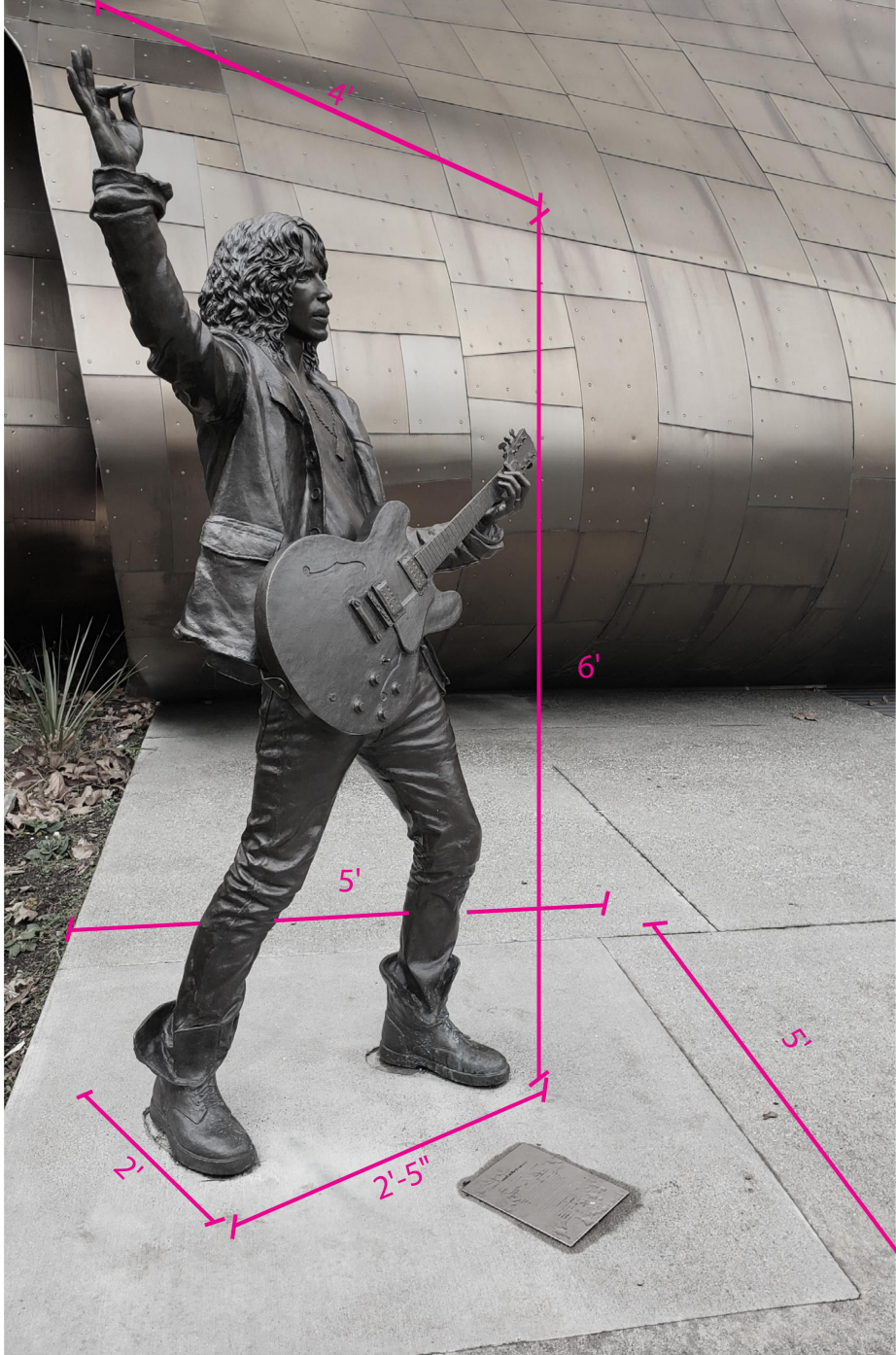


CPA PLAZA STATUES LANDMARKS CofA SUBMISSION

Traditional Statue Precedents (Proposed)



CHRIS CORNELL STATUE AT MOPOP



CHRIS CORNELL STATUE AT MOPOP - DIMENSIONS



RAISED CONCRETE PEDESTAL



NATURAL STONE PEDESTAL



LIGHTING IN CONCRETE OR IN PEDESTAL



CPA PLAZA STATUES LANDMARKS CofA SUBMISSION

Statue Location Opportunities

Overview:

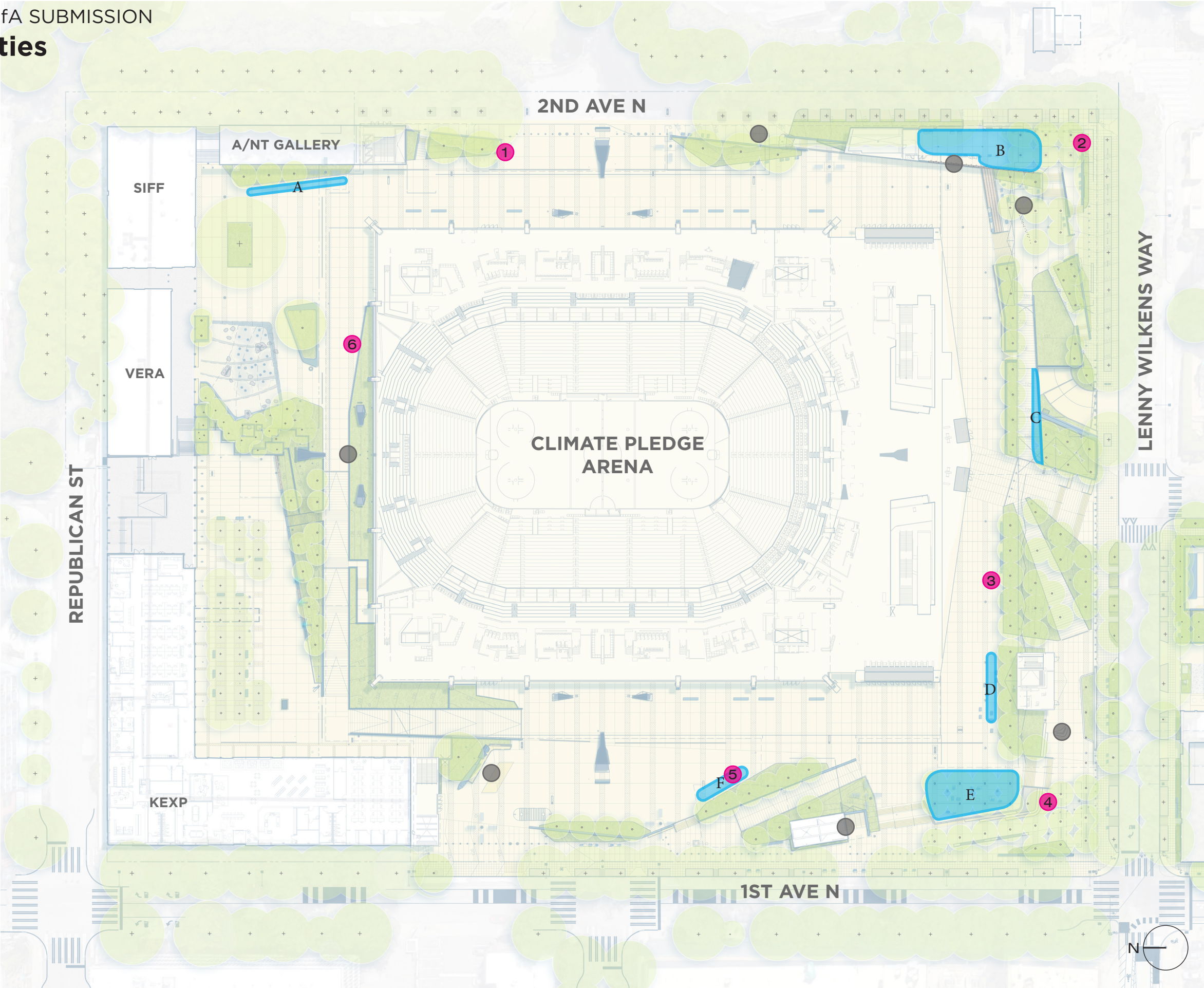
The Intent of the following diagrams is to provide illustrations and rationale for potential sculpture locations within the context surrounding the CPA site.

Individual sculpture locations are generally open and accessible to the public, however are more limited by spatial constraints.

Grouped sculpture locations include spaces with less spatial constraints and could accommodate groupings of sculptures of various sizes and types.

The proposed locations for sculptures have taken into consideration the location of existing public art installments on the arena site, with the intent of providing each with sufficient latitude.

- **Individual Statues / Artwork Numbers**
- **Grouped Statues / Artwork Letters**
- **Existing Public Art Location**



Location Evaluation Criteria

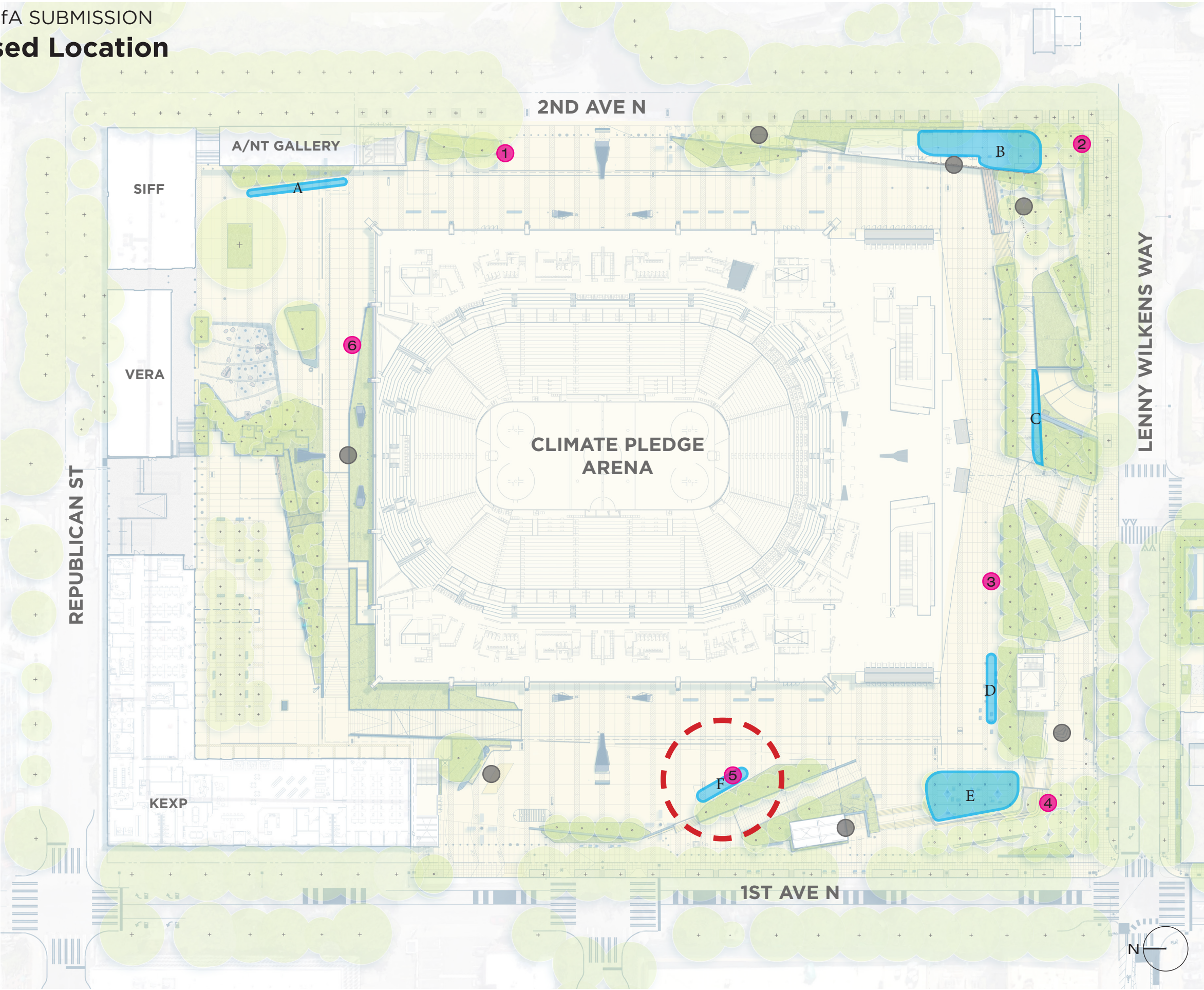
<div><div></div><div>0%25%50%75%100%</div></div>				
Electrical Feasibility <ul style="list-style-type: none">Difficult location due to being above arena footprint therefore normal trenching for conduit will not be available - exposed conduit required.Potential conflict with existing lighting.	<ul style="list-style-type: none">Difficult location due to being above arena footprint therefore normal trenching for conduit will not be available - exposed conduit required.Alt trenching through planting areas.	<ul style="list-style-type: none">No issue or positive benefit to these locations.	<ul style="list-style-type: none">Easy to tie into a nearby lighting electrical circuit therefore no need to add circuits or have a conduit path back to the building.Minimizes exposed electrical conduit.	
Structural Feasibility	<ul style="list-style-type: none">Located on structure. Structure designed for lower non-motorable loads with lower load rated geofoam.Heavy statue loads NOT recommended.	<ul style="list-style-type: none">Located on structure. Structure designed for heavier landscape + motorable loads.Better-suited for individual statues, however groupings of statues and associated loads are problematic.	<ul style="list-style-type: none">Located off structure, no structural constraints. Smaller grouped statues could be supported directly on paving slab. Adding a foundation requires removal and replacement of paving slab.	
Site Integration <ul style="list-style-type: none">Presents significant operational challenges for Seattle Center or Climate Pledge Arena operations.	<ul style="list-style-type: none">Limited footprint, coordination needed with maintenance and major pedestrian circulation pathways.May compete with adjacent art, requires coordination.	<ul style="list-style-type: none">Limited footprint, coordination needed with maintenance and major pedestrian circulation pathways.	<ul style="list-style-type: none">Coordination needed with existing event programing and/or existing CPA lease line.	<ul style="list-style-type: none">No issue to these locations.
Experiential Enhancement <ul style="list-style-type: none">Location has many existing visual elements which may limit experiential impact.Limited visibility from other areas in Seattle Center.	<ul style="list-style-type: none">Location has many existing visual elements which may limit experiential impact.	<ul style="list-style-type: none">No issue or positive benefit to these locations.	<ul style="list-style-type: none">Excellent visibility from adjacent spaces.	<ul style="list-style-type: none">Location is open and would benefit from addition of place-making art.Excellent visibility from adjacent spaces.

CPA PLAZA STATUES LANDMARKS CofA SUBMISSION

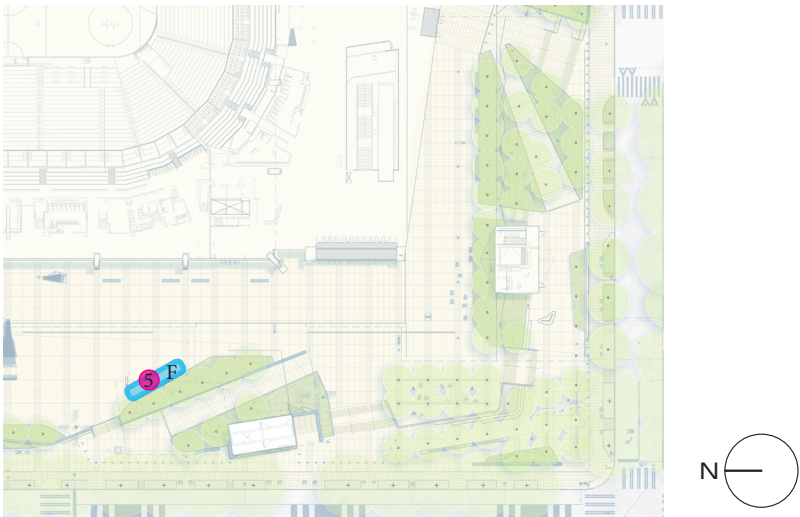
Scoring Summary & Proposed Location

Location	Score
A	N/A
1	60
B	45
2	70
C	75
3	55
D	55
4	70
E	80
F / 5	90
6	45

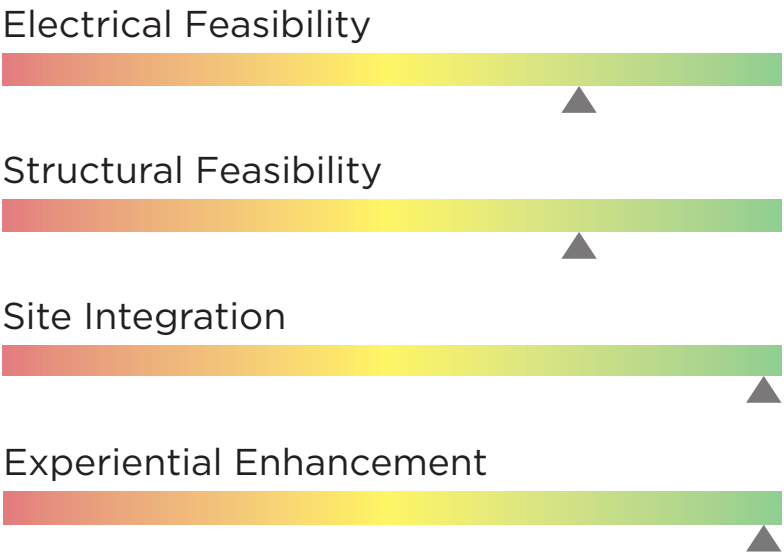
- Individual Statues / Artwork Numbers
- Grouped Statues / Artwork Letters
- Existing Public Art Location



Proposed Statue Location - F/5



- **Grouped Statues / Artwork**
Letters
- **Individual Statues / Artwork**
Numbers



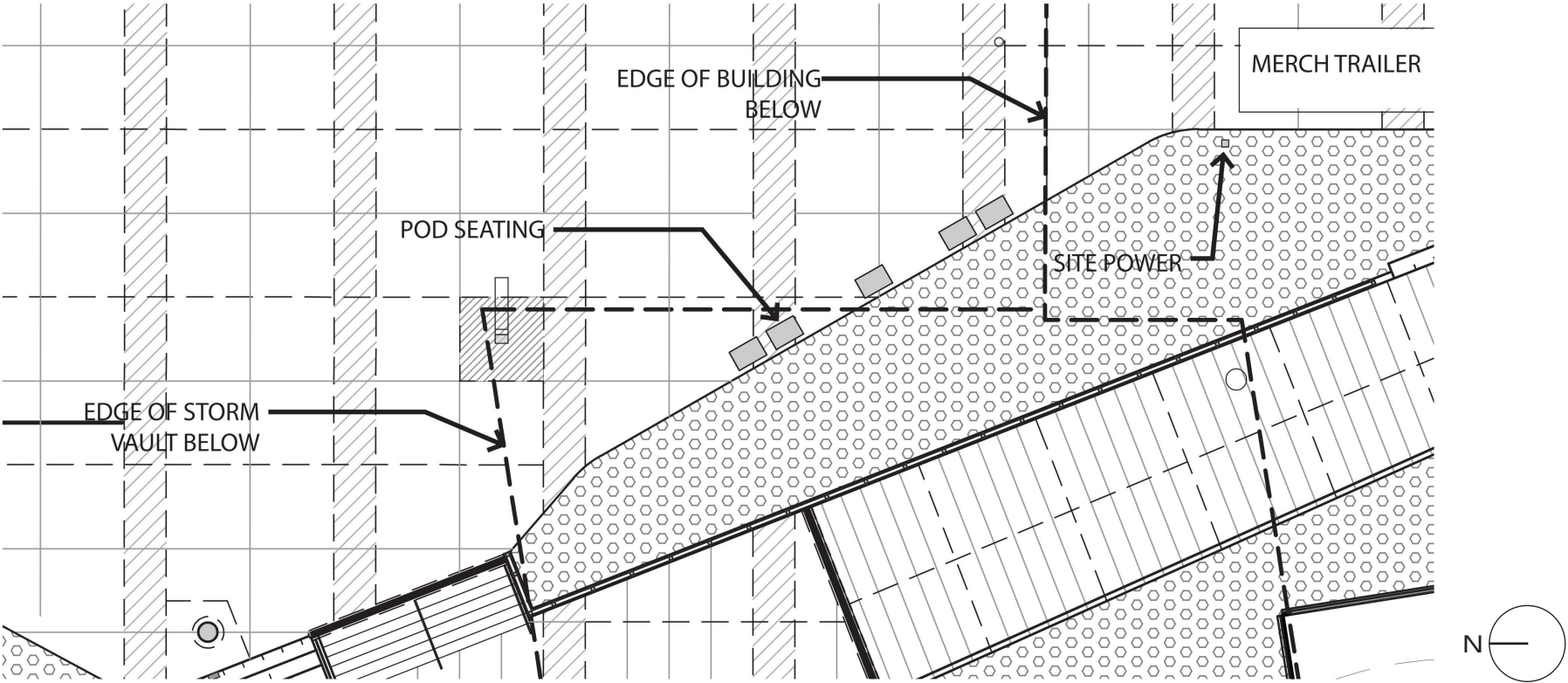
Average Location Score: 90



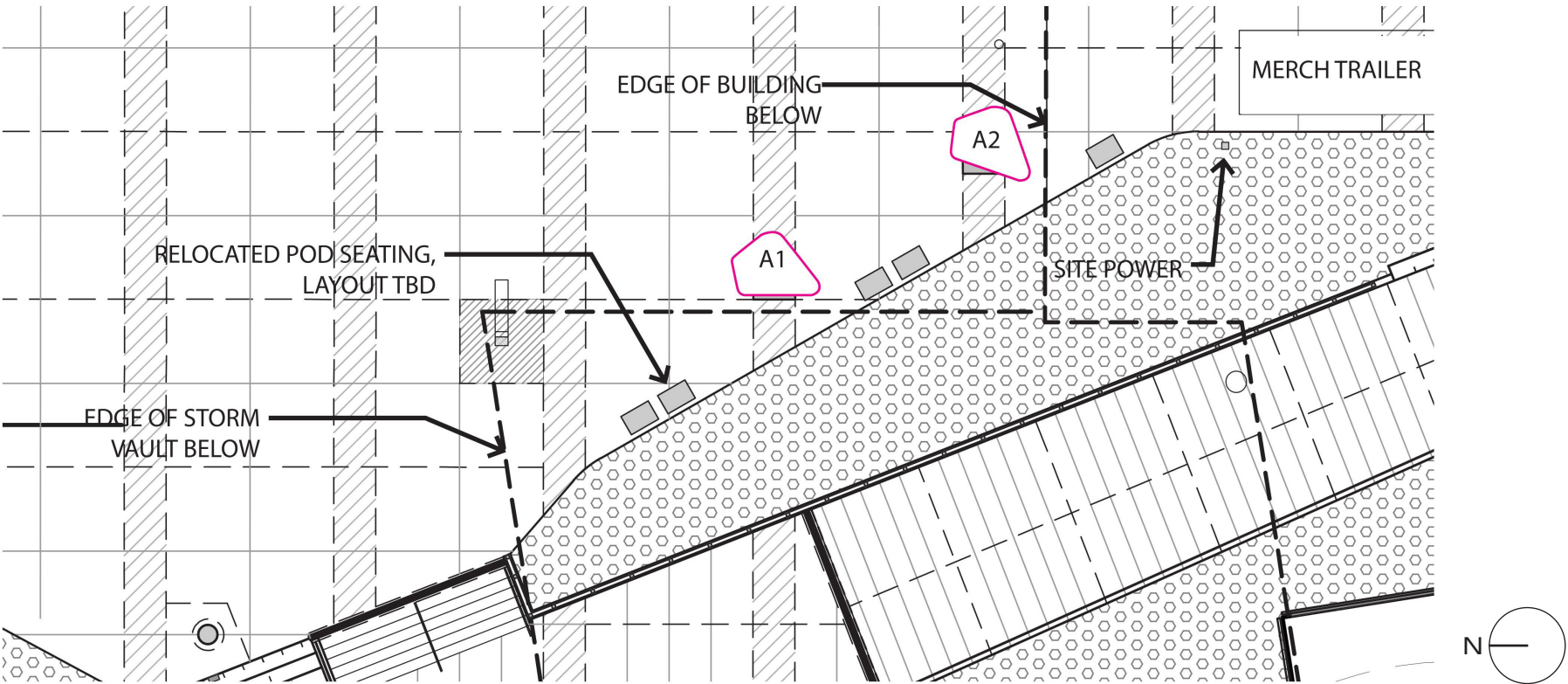
- Site F / 5 - Opportunities:
- Open/ long space immediately adjacent the planting bed.
 - Opportunity to bring life to the expansive space along the pedestrian corridor.
 - Access to power in the adjacent planter could support new/sculpture specific lighting or power connectivity.
 - Excellent visibility from the adjacent spaces.
- Constraints:
- Partially over the stormwater detention tank, though the tank is designed for a high imposed load.
 - Ambient light conditions might not be sufficient, requires testing with light meter.

CPA PLAZA STATUES LANDMARKS CofA SUBMISSION

Proposed Statue Location - F/5



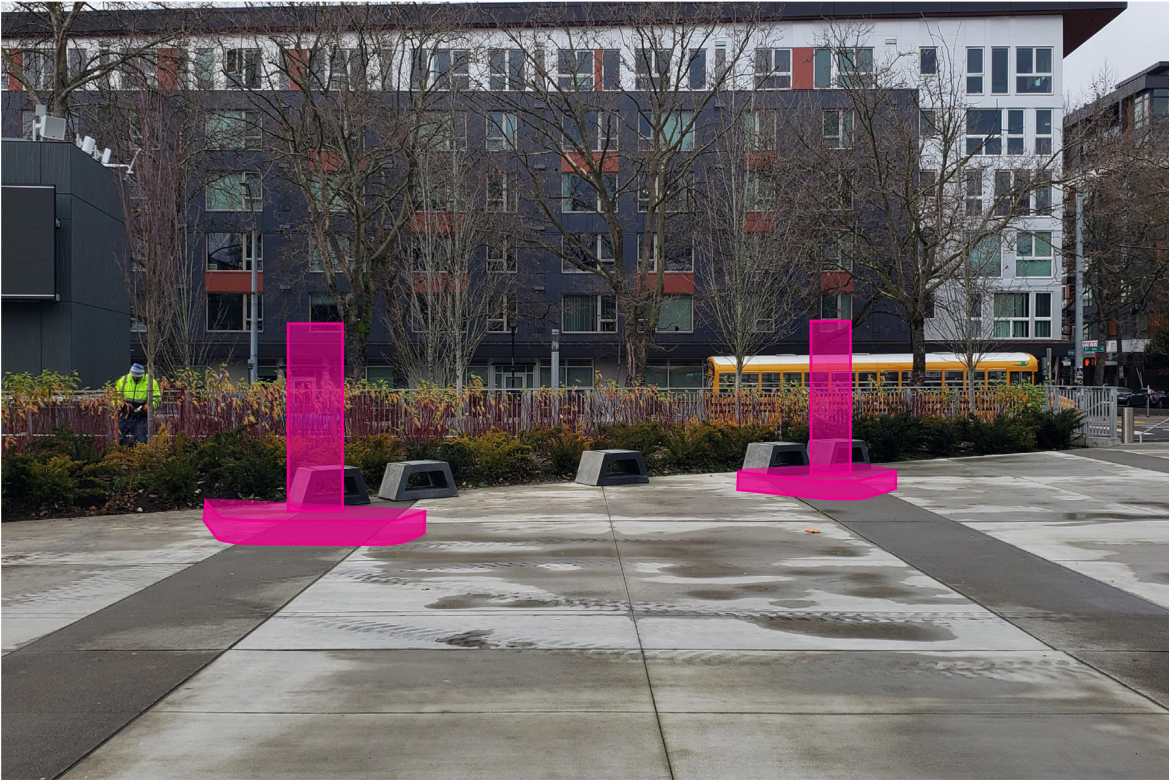
STATUE SITE LOCATION - CURRENT LAYOUT



STATUE SITE LOCATION - PROPOSED TWO STATUES



STATUE SITE LOCATION - LOOKING NORTHWEST



STATUE SITE LOCATION - LOOKING WEST

CPA PLAZA STATUES LANDMARKS CofA SUBMISSION

Statue Pedestal Design Inspiration



SW Greeter Art (above)

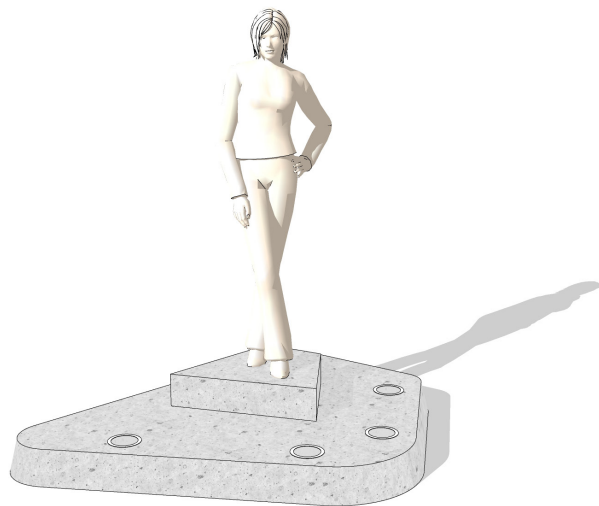
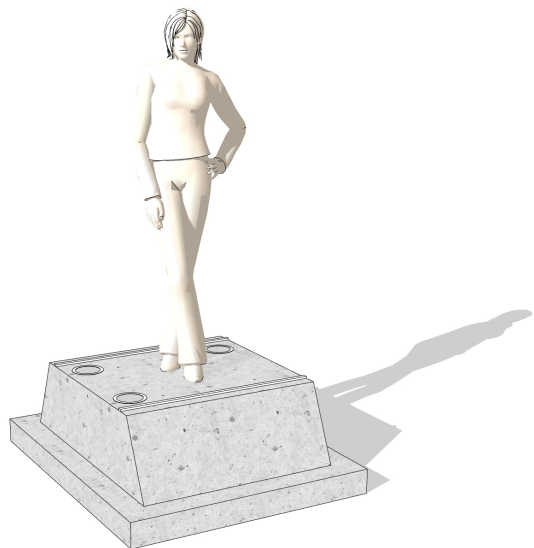
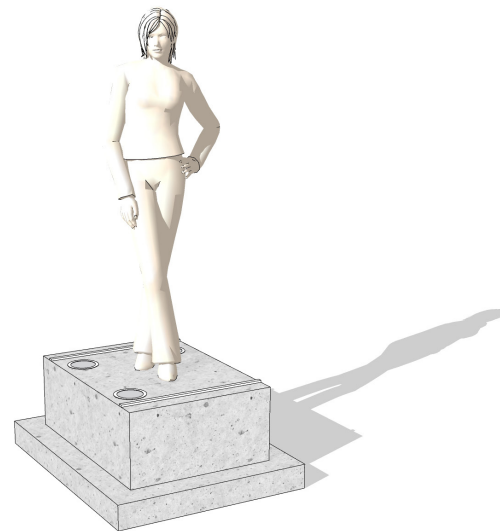
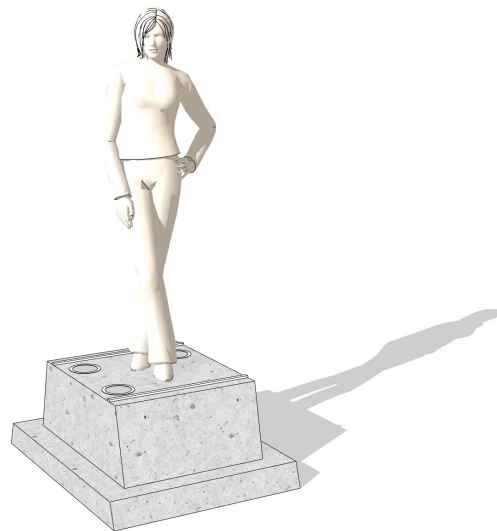
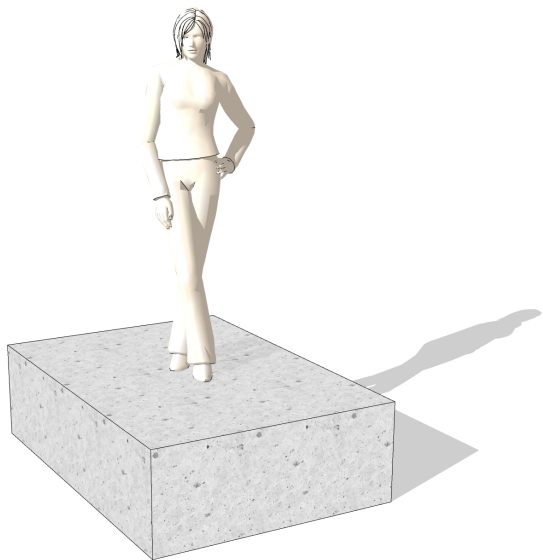


Thiry Panels (upper right)

Thiry Panel Detail (right)

Arena Plaza Benches (far right)

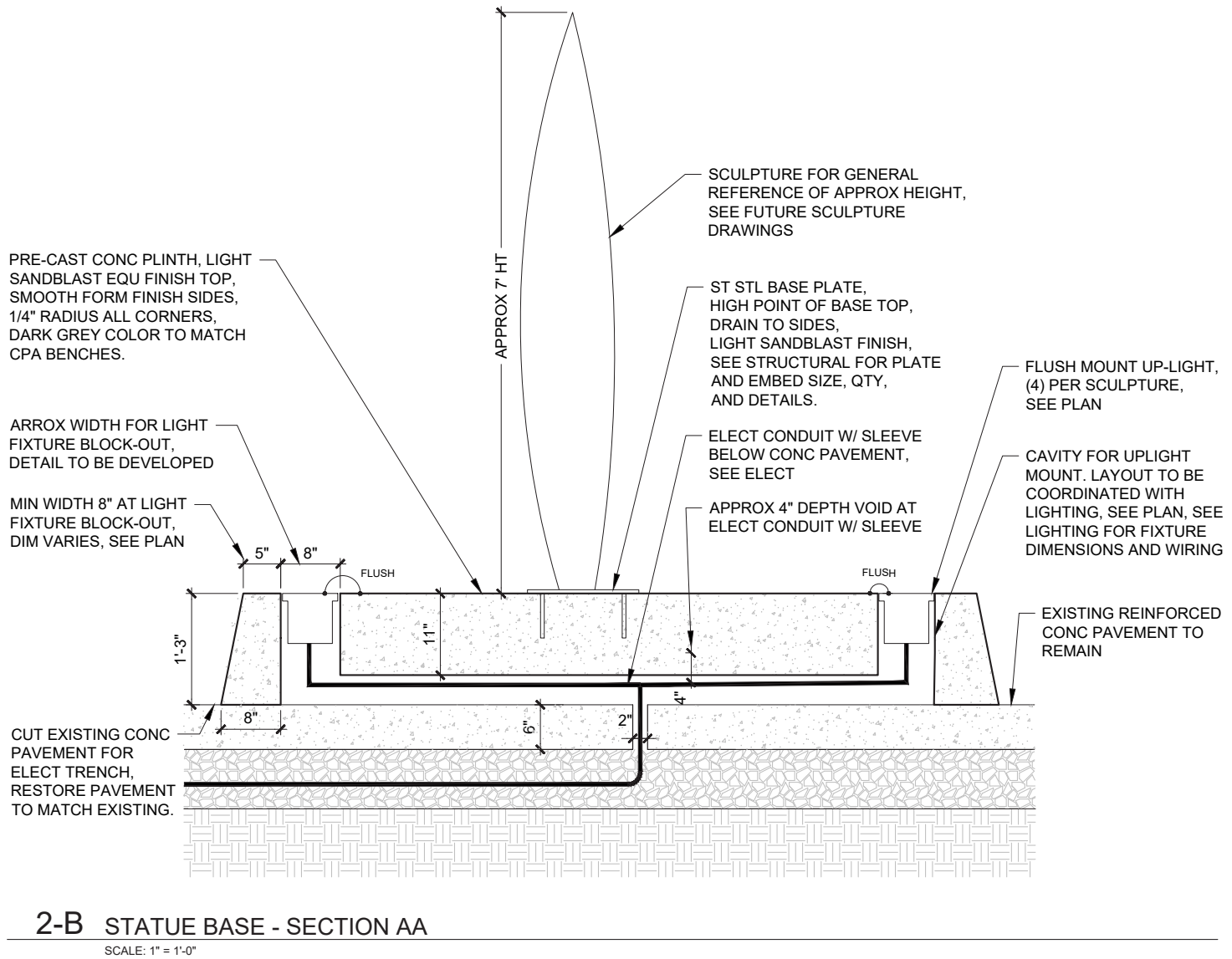
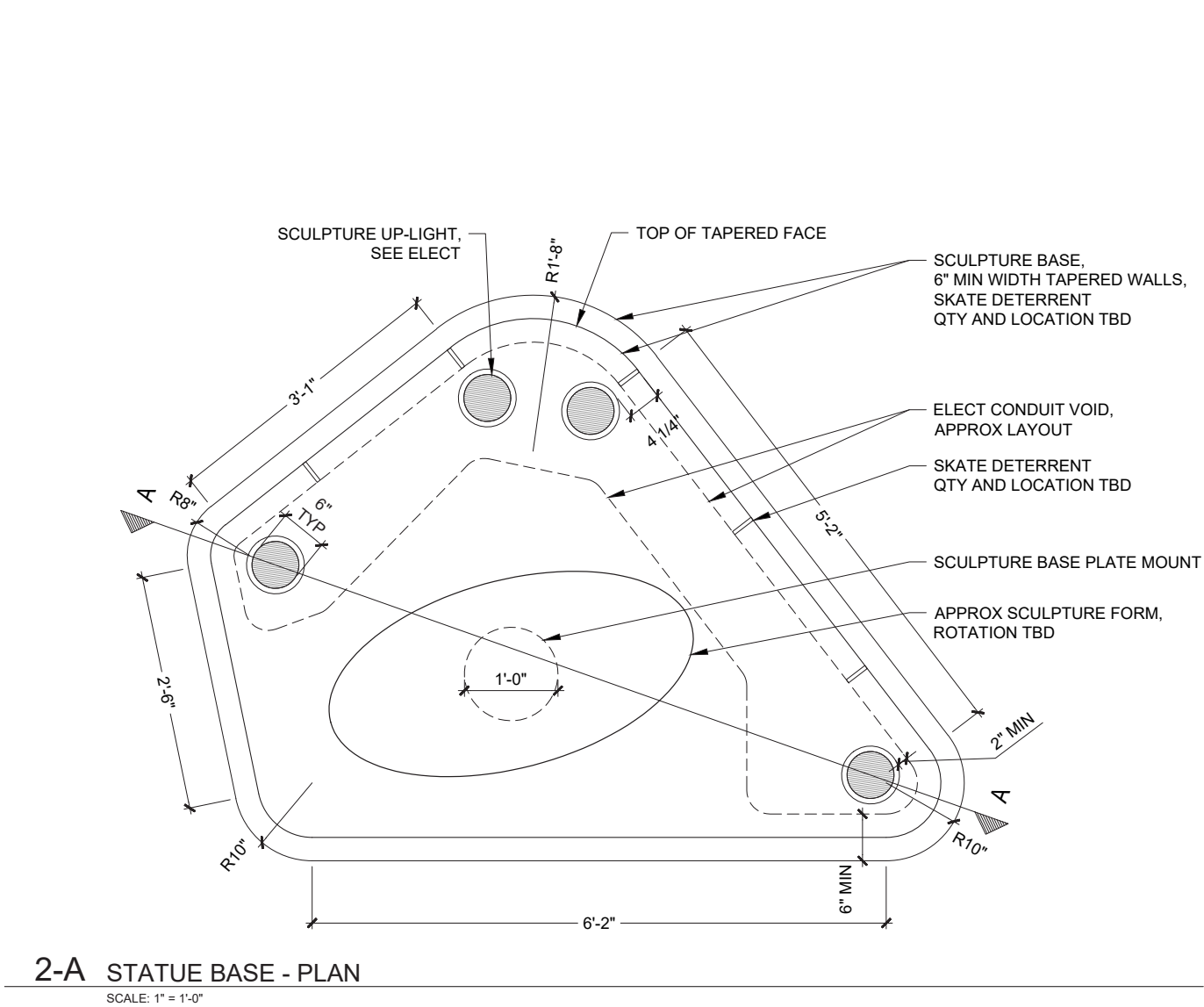




(Proposed)

CPA PLAZA STATUES LANDMARKS CofA SUBMISSION

Proposed Statue Pedestal Plan, Section, & Detail





PRECEDENT - INTEGRAL PEDESTAL UP-LIGHTING

ERCO

Tesis In-ground luminaire

Lens wallwasher

35073.023
LED 16W 1680lm 3000K warm white
0-10V dimmable
Version 9
Size 4
Lens system, wallwash

Product description
Housing: polymer, black.
Control gear 120V/277V, 60Hz, dimmable. Longitudinally watertight cable 5xAWG14, L 31 1/2" / 800mm. LED module: high-power LEDs on metal-core PCB. Rotatable through 360°. Lens system made of optical polymer.
Wallwasher reflector: polymer, aluminum vaporized, silver, ribbed, partially black lacquered, with lower diffuser. Optical cut-off 40° from horizontal.
Screw-fastened cover ring with flush safety glass: stainless steel. Safety glass: 9/16" / 15mm, clear.
Installation with separate connection sleeve.

Mounting in recessed housing: can be driven over in vehicles with pneumatic tyres. Load 4500lb.wt / 20kN. Dimming with external dimmers possible (0-10V). Suitable for wet location (IP68): dust-proof. Weight 5.07lbs / 2.30kg
Version with 3000K CRI 97 or 2700K, 3500K, 4000K CRI 92 available on request.



BASIS-OF-DESIGN LIGHT FIXTURES

CPA PLAZA STATUES LANDMARKS CofA SUBMISSION

Proposed Statue Design - View Looking West Toward 1st Ave N



CPA PLAZA STATUES LANDMARKS CofA SUBMISSION

Proposed Statue Design - View Looking Northwest



CPA PLAZA STATUES LANDMARKS CofA SUBMISSION

Proposed Statue Design - View Looking Southeast Toward Arena



Summary of Proposed Statue Design Parameters

STATUE QUANTITY: two (2) statues

STATUE TYPE: traditional

PEDESTAL TYPE: tapered edge design

PEDESTAL DIMENSIONS: *(see detail on page 17)*

PEDESTAL MATERIAL: concrete material, intended to match color and appearance of existing concrete site furnishings

STATUE HEIGHT: approximately 7'-0" tall statue figures (statue height is in addition to pedestal height)

STATUE MATERIAL: marine silicone bronze

LIGHTING: uplighting in statue pedestal

ATTACHMENT METHOD: no mechanical attachment to plaza, pedestals to rely on gravity and friction to remain in place

OTHER FEATURES: name/identification plaque or engraving integrated into statue pedestals



CLIMATE PLEDGE
ARENA

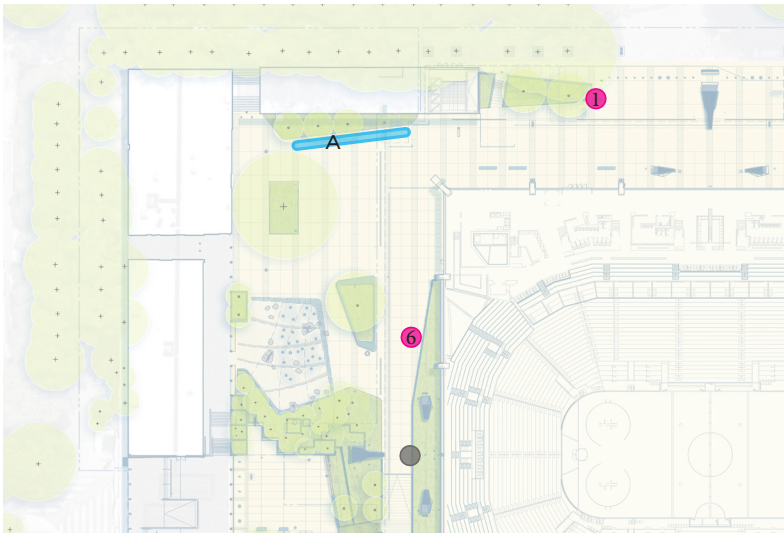
POPULOUS

SWIFT COMPANY LLC

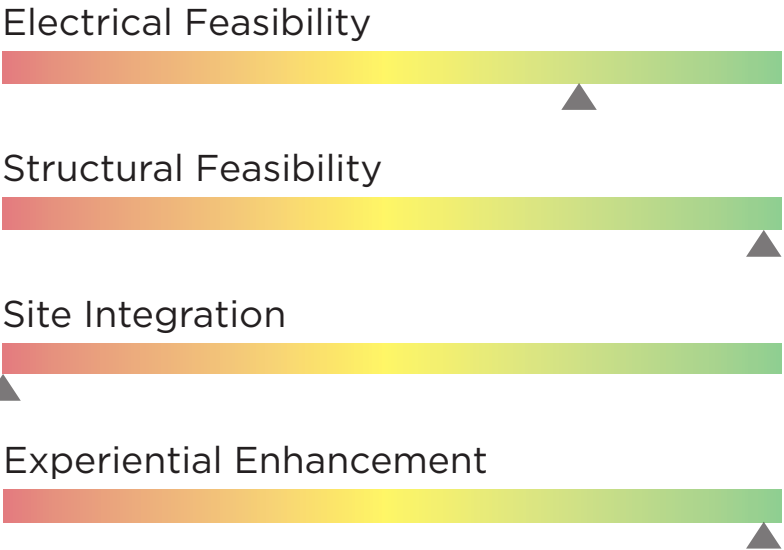


APPENDIX

Location Analysis & Images



- Grouped Statues / Artwork Letters
- Individual Statues / Artwork Numbers
- Existing Public Art Locations



Average Location Score: **N/A**



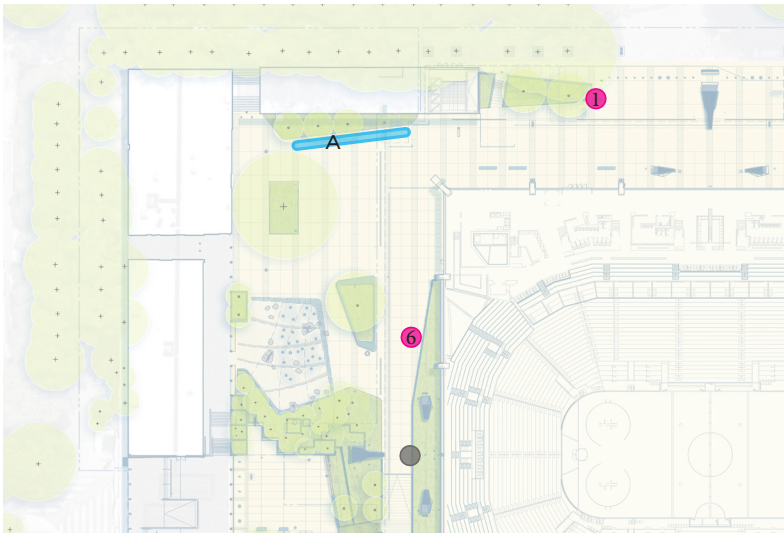
Site A - Opportunities:

- Open/ long space immediately adjacent (west) of the planting bed curb.
- Opportunity to bring life to the expansive space when otherwise empty.
- Access to power in the adjacent planter could support new/sculpture specific lighting or power connectivity.
- Excellent visibility from the adjacent spaces, and would provide a screen / foil in front of the pavilion wall that suffer from exposed mechanical equipment.
- Existing light from adjacent tall site poles might provide sufficient illumination.

Constraints:

- Location was previously intentionally left empty for opportunities form SIFF / Seattle Center to locate outdoor movie screens / stages for events.
- Presents significant operational challenges for Seattle Center operations.
- The majority of this zone is outside the CPA lease line with Seattle Center and therefore is the location is not feasible.

Location Analysis & Images



- **Grouped Statues / Artwork**
Letters
- **Individual Statues / Artwork**
Numbers
- **Existing Public Art Locations**



Electrical Feasibility



Structural Feasibility



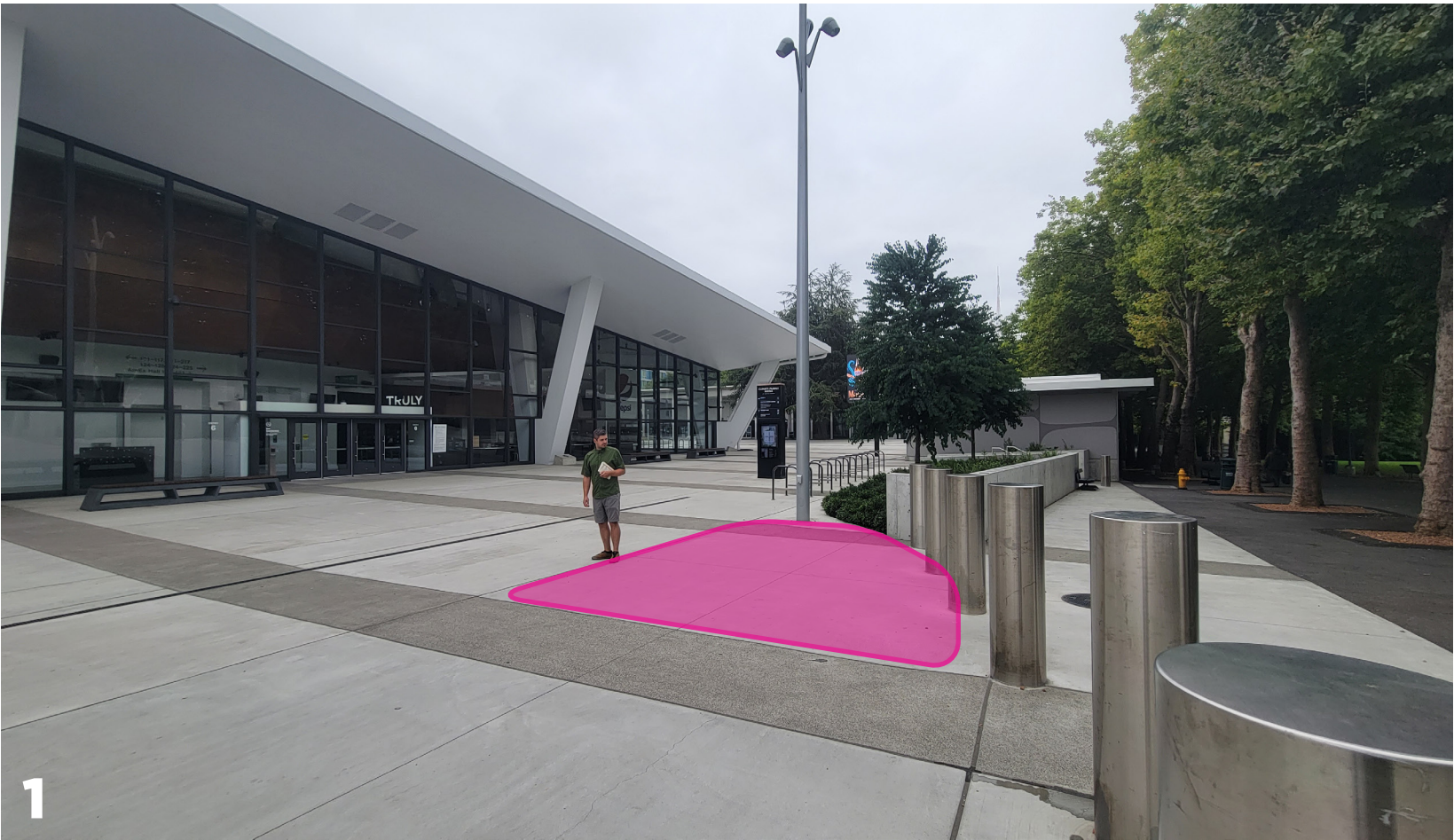
Site Integration



Experiential Enhancement



Average Location Score: **60**



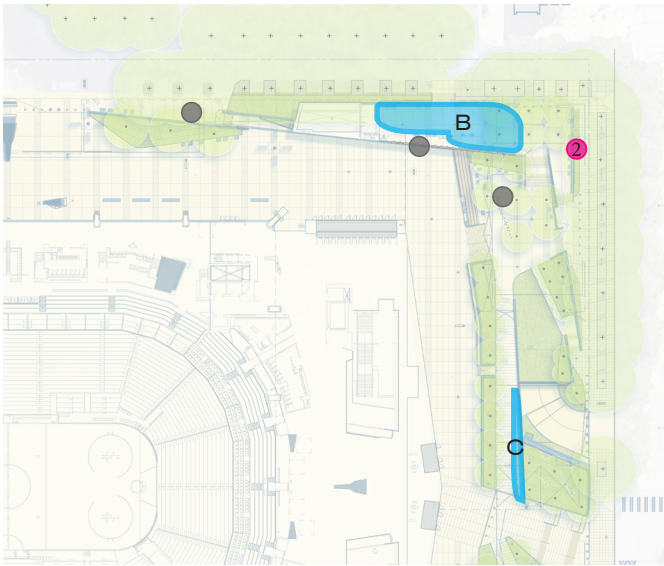
Site 1 - Opportunities:

- Open space immediately adjacent (south) edge of the planting bed in an area protected by the bollard alignment.
- Access to power in the adjacent planter could support new/sculpture specific lighting or power connectivity.
- On-grade (east of CPA plaza structure below pavement) reduces challenges with conduit and pavement replacement.
- Highly visible from the heart of Seattle Center and major public pedestrian access routes.

Constraints:

- Location has limited area due to the pathway for event and maintenance access through the hydraulic bollards to the south.
- Presents significant operational challenges for Seattle Center operations.
- Ambient light conditions might not be sufficient, requires testing with light meter.
- Requires coordination of statue foundations with bollard foundations.

Location Analysis & Images



- **Grouped Statues / Artwork**
Letters
- **Individual Statues / Artwork**
Numbers
- **Existing Public Art Locations**

Electrical Feasibility



Structural Feasibility



Site Integration



Experiential Enhancement



Average Location Score:

45



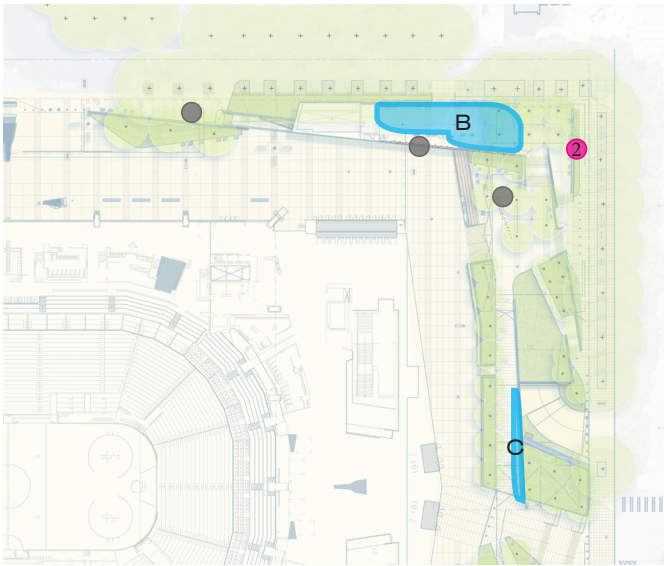
Site B - Opportunities:

- Small open space immediately adjacent the ADA elevator in an area protected by the site walls.
- Access to power in the adjacent planter (through the wall) could support new/ sculpture specific lighting or power connectivity.
- Moderate visibility from the heart of Seattle Center and major public pedestrian access routes.

Constraints:

- Location has limited area due to the ADA pathway for event and maintenance access through the hydraulic bollards to the north.
- Ambient light conditions might not be sufficient, requires testing with light meter.
- Entirely on-structure over the CPA exit stair. All foundations for statues will likely require removal and replacement of paving slab, and will need to be coordinated with several adjacent items.
- Above exit stair below, issue for electrical raceway, requires passing through wall into planter north of wall as the stair is a “no-fly” zone.

Location Analysis & Images



- Grouped Statues / Artwork Letters
- Individual Statues / Artwork Numbers
- Existing Public Art Locations

Electrical Feasibility



Structural Feasibility



Site Integration



Experiential Enhancement



Average Location Score: 70



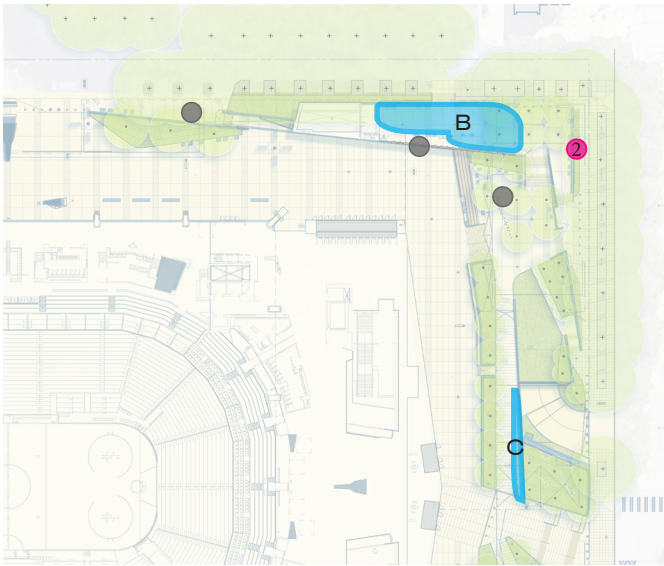
Site 2 - Opportunities:

- Small open space immediately adjacent the SE pedestrian entry to the site.
- Access to power in the adjacent planter (through the wall) could support new/ sculpture specific lighting or power connectivity.
- High visibility from the heart of Seattle Center and major public pedestrian access routes.

Constraints:

- Would recommend the spot to the south for less clutter around and better backdrop with the Arena.
- On structure. Structure designed for higher tree/soil loads with lower load rated geofoam and thinner paving. Statue foundation requires coordination with bollard and wall foundations.

Location Analysis & Images



- Grouped Statues / Artwork Letters
- Individual Statues / Artwork Numbers
- Existing Public Art Locations

Electrical Feasibility



Structural Feasibility



Site Integration



Experiential Enhancement



Average Location Score: 75



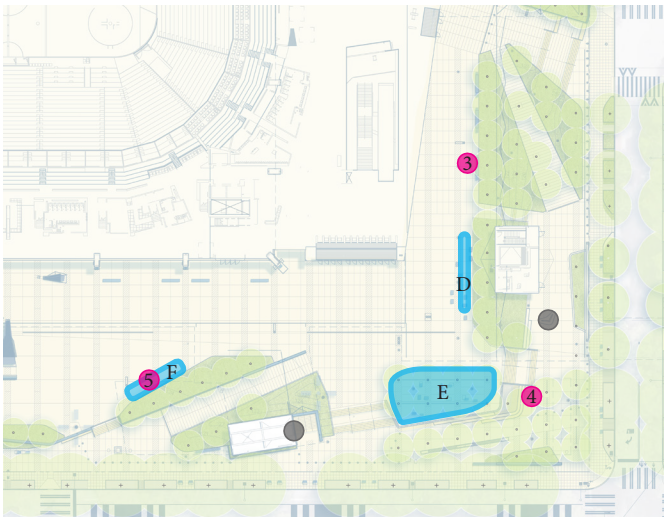
Site C - Opportunities:

- Small space along the south edge of the sloped walk and guardrail above the garage entry drive.
- Access to power in the planter could support new/sculpture specific lighting or power connectivity.
- Excellent visibility from the adjacent spaces.

Constraints:

- Limited feasible size of sculptures to not impact the walking zone for pedestrians.
- Challenging access to power - likely required to feed from the base of the rail/site wall to support new/sculpture specific lighting or power connectivity.
- Located on structure that is designed for lower non-motorable loads with lower load rated geofoam and thinner paving. Grouped statue foundation likely requires removal and replacement of paving slab with thicker larger foundation

Location Analysis & Images



- Grouped Statues / Artwork Letters
- Individual Statues / Artwork Numbers
- Existing Public Art Locations

Electrical Feasibility



Structural Feasibility



Site Integration



Experiential Enhancement



Average Location Score: 55



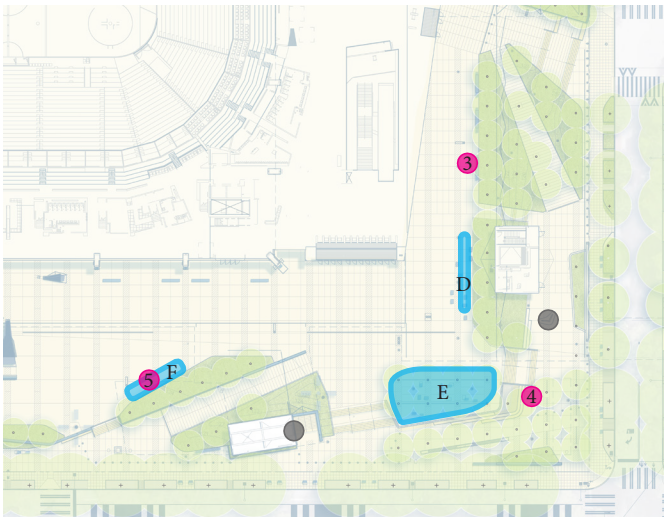
Site 3 - Opportunities:

- Long open space immediately adjacent the planter and primary south pedestrian entry to the site.
- Access to power in the adjacent planter could support new/sculpture specific lighting or power connectivity.
- High visibility from both inside and outside the CPA atrium.
- Possible to integrate into the edge of landscape bed.
- Located on structure that is designed for motorable loads with higher load rated geofoam. Smaller grouped statues could possibly be supported directly on paving slab.

Constraints:

- Large benches are fixed, so art would go around benches.
- Big digital reader board scale.
- Ambient light conditions might not be sufficient, requires testing with light meter.
- Entirely on-structure over the CPA roof.
- Conduit runs limited to within planter.
- Competes with front view of arena and south buttress.

Location Analysis & Images



- Grouped Statues / Artwork Letters
- Individual Statues / Artwork Numbers
- Existing Public Art Locations



Electrical Feasibility



Structural Feasibility



Site Integration



Experiential Enhancement



Average Location Score: **55**



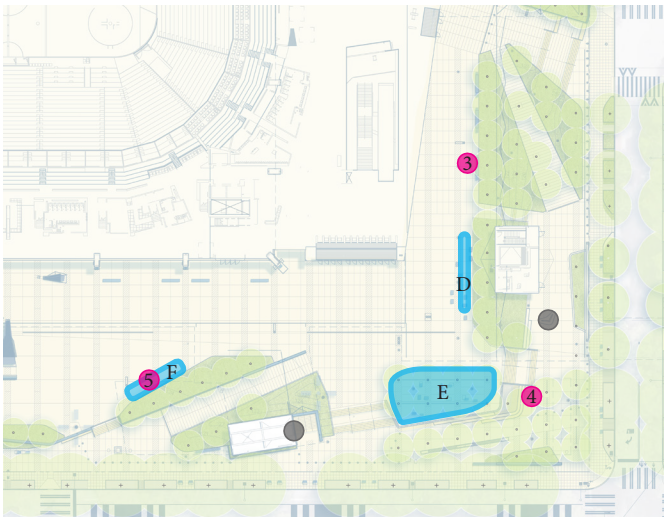
Site D - Opportunities:

- Long open space immediately adjacent the planter and primary south pedestrian entry to the site.
- Access to power in the adjacent planter could support new/sculpture specific lighting or power connectivity.
- High visibility from both inside and outside the CPA atrium.
- Structure below rated for higher motorable loads.

Constraints:

- Large benches are fixed, so art would go around benches.
- Big digital reader board scale.
- Ambient light conditions might not be sufficient, requires testing with light meter.
- Entirely on-structure over the CPA roof.
- Conduit runs limited to within planter.
- Competes with front view of arena and south buttress.

Location Analysis & Images



- Grouped Statues / Artwork Letters
- Individual Statues / Artwork Numbers
- Existing Public Art Locations



Electrical Feasibility



Structural Feasibility



Site Integration



Experiential Enhancement



Average Location Score: **70**



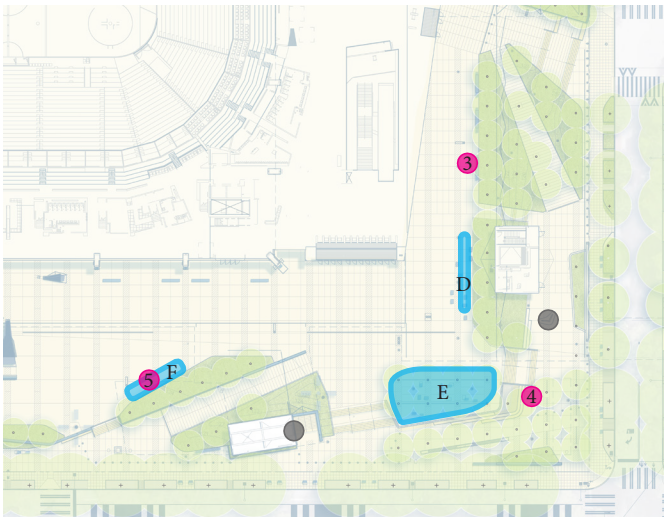
Site 4 - Opportunities:

- Small open space immediately adjacent the SW entry of the CPA steps and primary south pedestrian entry to the site.
- High visibility from both the site and public ROW.
- Great 'selfie-spot' .

Constraints:

- Ambient light conditions might not be sufficient, requires testing with light meter.
- Potential conflicts over site stormwater detention tank and/or piping.
- Difficult location for new / sculpture specific power and lighting.

Location Analysis & Images



- Grouped Statues / Artwork Letters
- Individual Statues / Artwork Numbers
- Existing Public Art Locations



Electrical Feasibility



Structural Feasibility



Site Integration



Experiential Enhancement



Average Location Score: 80



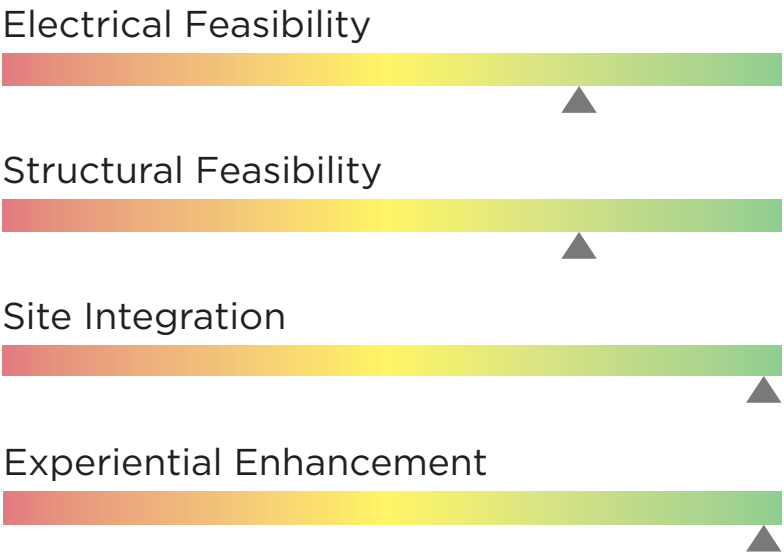
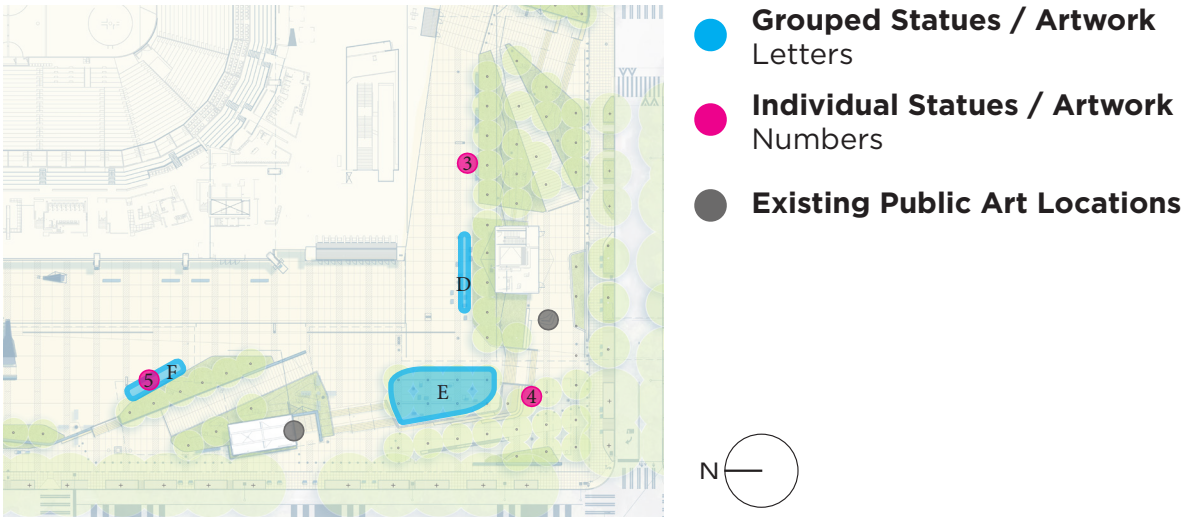
Site E - Opportunities:

- Located on structure, but there are no constraining impacts.
- Allows for some play with scale in and amongst the trees
- High visibility location from both the atrium and streetscape.

Constraints:

- This location was the where the “Go Kraken” sign was placed for the playoff run. This would require a new home for that signage.
- Requires coordination around, and likely removal of, soil cells.

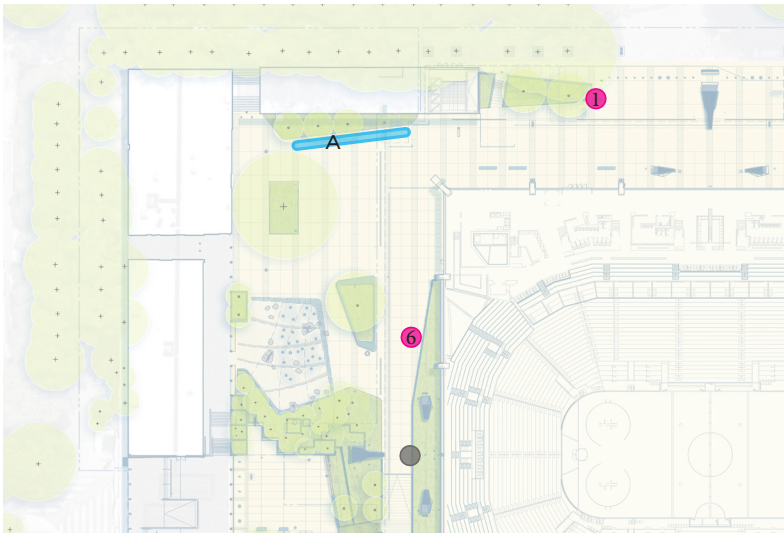
Location Analysis & Images



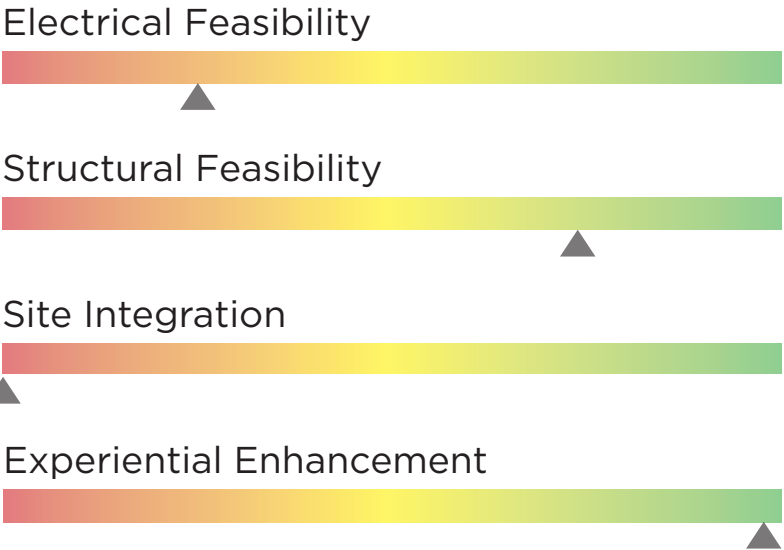
Average Location Score: 90

- Site F / 5 - Opportunities:
- Open/ long space immediately adjacent the planting bed.
 - Opportunity to bring life to the expansive space along the pedestrian corridor.
 - Access to power in the adjacent planter could support new/sculpture specific lighting or power connectivity.
 - Excellent visibility from the adjacent spaces.
- Constraints:
- Ambient light conditions might not be sufficient, requires testing with light meter.

Location Analysis & Images



- Grouped Statues / Artwork Letters
- Individual Statues / Artwork Numbers
- Existing Public Art Locations



Average Location Score: **45**



Site 6 - Opportunities:

- Open/ long space immediately adjacent (north) of the planting bed wall.
- Opportunity to bring life to the expansive space along the pedestrian corridor.
- Access to power in the adjacent planter could support new/sculpture specific lighting or power connectivity.
- Excellent visibility from the adjacent spaces.

Constraints:

- Competes with the DuPen Fountain sculptures to the north.
- Entirely above structure for CPA plaza framing, though this structure is designed to take large vehicle loads.
- Ambient light conditions might not be sufficient, requires testing with light meter.
- Electrical routing limited to within planting bed.
- Presents significant operational challenges for Seattle Center operations - access easements exist in this zone.



CLIMATE PLEDGE
ARENA

POPULOUS

SWIFTCOMPANY LLC