



# SEATTLE PUBLIC LIBRARY UNIVERSITY BRANCH RENOVATION

LANDMARKS BRIEFING MEETING  
APRIL 14, 2023

## **\* 1. PROJECT OBJECTIVES**

## **2. BUILDING HISTORY + EXISTING CONDITIONS**

## **3. DESIGN PROPOSALS**

- SITE ACCESSIBILITY IMPROVEMENTS
- BUILDING EXTERIOR MODIFICATIONS + ADDITIONS
- INTERIOR MODIFICATIONS

## 2019 “LIBRARIES FOR ALL” LEVY

- RENEWAL OF 2012 LIBRARY LEVY
  - MAINTAIN/EXPAND COLLECTIONS + SERVICES
- 

### PROJECT GOALS

- IMPROVE LIFE SAFETY
- IMPROVE ACCESSIBILITY
- INSTALL ELEVATOR
- MEET LEED GOLD (ELECTRIFICATION)
- EXPAND PROGRAM & SERVICES

### EXPANDED PROGRAM + SERVICES

- ADD MEETING/STUDY ROOMS
- INCREASE COMPUTER & RESTROOM ACCESS
- MAINTAIN EXISTING COLLECTIONS

### PUBLIC + STAFF SAFETY

- IMPROVE INTERNAL SIGHT LINES
- PROVIDE ADDITIONAL EMERGENCY EXIT

## 1. PROJECT OBJECTIVES

## \* 2. BUILDING HISTORY + EXISTING CONDITIONS

## 3. DESIGN PROPOSALS

- SITE ACCESSIBILITY IMPROVEMENTS
- BUILDING EXTERIOR MODIFICATIONS + ADDITIONS
- INTERIOR MODIFICATIONS

BUILDING HISTORY + EXISTING CONDITIONS

PROPERTY CONTEXT + LANDMARK CONTROLS

PROPERTY DATA

Property Name:	University Public Library
Site Address:	5009 Roosevelt Way Northeast
	Seattle, WA 98105
Tax Assessor's File No.:	0825049041
Construction Date:	1910
Original Architect:	Somerville & Coté
Original Builder:	Unknown
Landmark Designation:	2001

NEIGHBORHOOD BUILDINGS

Nearby City of Seattle Landmarks buildings within a quarter-mile radius include the following:
1. Church of the Blessed Sacrament, 1910 5041 9th Avenue
2. University Library, 1909 5009 Roosevelt Way NE
3. Fire Station #17, 1929 1050 NE 50th Street

LANDMARK CONTROLS

- Site
- Exterior of building
- Interior of main floor (excludes lower floor)
- Excludes coverings and movable furniture

CHANGES TO ORIGINAL BUILDING

1933	Light Fixtures altered with Pittsburgh reflectors
1951	New oil burner
1951	Light installed over front entrance
1954	Lights improved
1955	Railings installed on interior and exterior stairs at entrances, 17 car parking lot
1956	Installation of natural gas heating plant
1961	Alter building per plan by architects Durham Anderson & Freed
1982	New conduit, wire service for library remodel
1983	Structural bracing of masonry gable ends and chimney to existing library building
1984	Alter existing library per plans, install fire alarm system, install lighting
1987	Construct accessibility ramp, provide new wiring, and seismic and system upgrading
1999	Install 20 AMP circuit to run existing sump pump
2001	<b>Landmarks designation</b>
2015	Window repairs
2016	Exterior fence, accessibility ramp and parking, and exterior handrail lighting
2017	Window repairs, lower floor power operated door



# BUILDING HISTORY + EXISTING CONDITIONS

## SUMMARY

### DESCRIPTION

The Seattle University Branch Library is one of six remaining Carnegie Libraries operated by Seattle Public Libraries. Designed by architects Somervell & Côté, library was constructed in 1908 and first opened in 1910. The architectural style of the University Library is Neo-Classical, with a formal grand entrance and bilateral symmetry. The building’s two-story structure was typical for its era, and combined a number of systems and materials. It is considered an unreinforced masonry (URM) building, constructed of reinforced concrete framing with hollow clay tile infill, and finished with cement stucco. Some Mediterranean influence is indicated in the stucco cladding, glazed terra cotta roof tile, and exposed rafter ends. The regular, symmetrical fenestration pattern is characterized by openings with a strong vertical proportion.

The library is located at 5009 Roosevelt Way NE, just north of the City of Seattle in the University District neighborhood. The site is a rectangular corner lot, bounded by Roosevelt Way NE on the east, NE 50th Street on the south, and 9th Ave NE on the west. The building is centrally located within the site, which slopes steeply downward to the east to meet the sidewalk at Roosevelt Way NE. The main entrance faces east with a central, ascending monumental stair. A paved parking lot is located at the west (rear) of the building. The surrounding area is characterized by a diverse mix of residential neighborhoods and commercial businesses.

### PROJECT SCOPE

The building does not meet current or pending seismic performance criteria, and the building’s Carnegie design and its site relationship presents challenges to providing universal and equitable access. The branch now faces the challenge of serving an increasingly diverse range of patrons while adapting to new norms of learning, research, and public service. While the primary project goals of this project are seismic, accessibility, and energy code compliance, the size and scale of the scope creates the opportunity for a complete building and site renovation to improve the user and staff experience.



UNIVERSITY BRANCH 1910



UNIVERSITY BRANCH 1931

# BUILDING EXTERIOR MODIFICATIONS + ADDITIONS

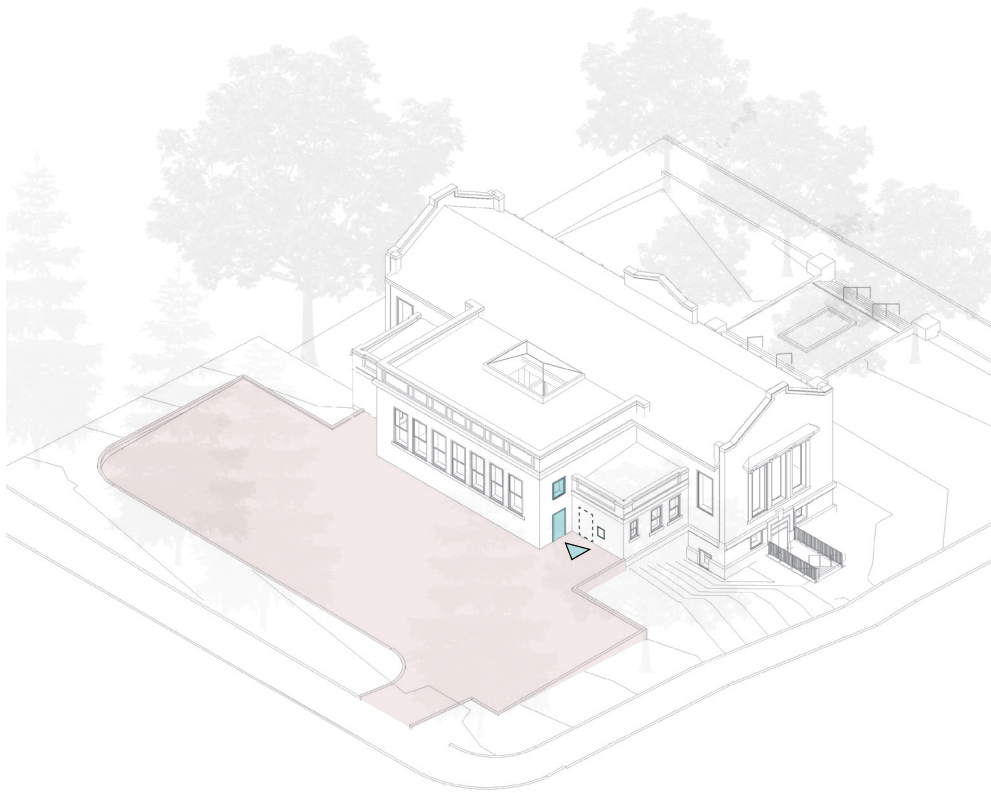
## SELECTED OPTION

### LANDMARKS PRESERVATION BOARD FEEDBACK

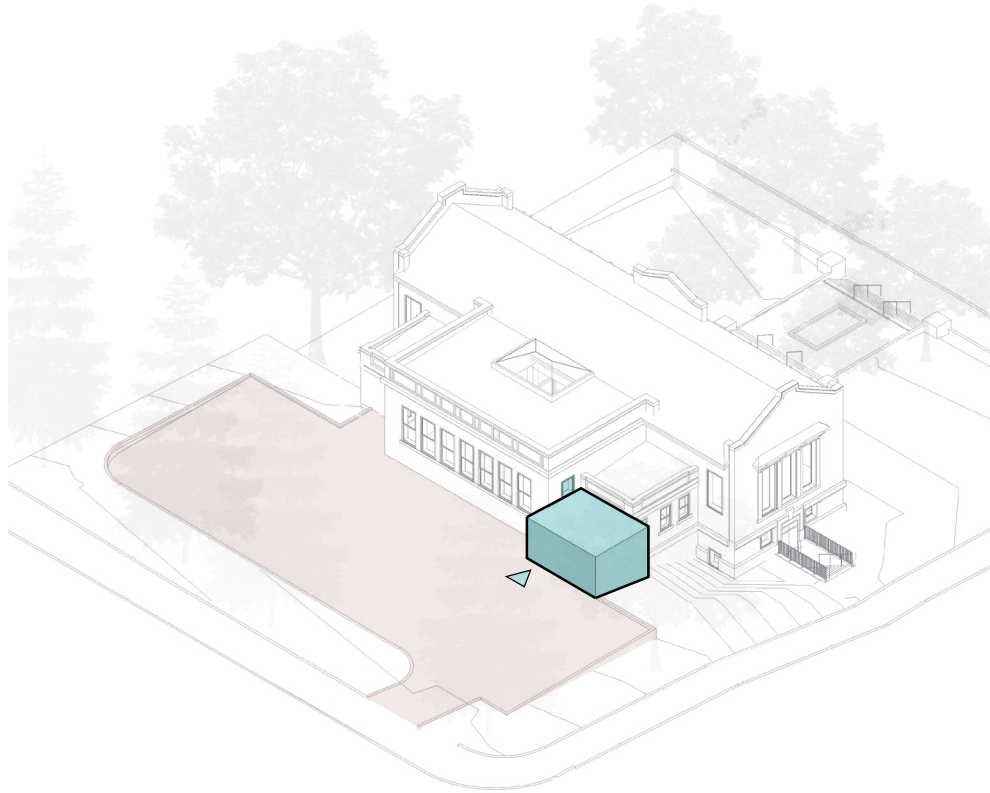
At the Landmarks Preservation Board Meeting on 7/9/22, SHKS Architects presented an overview of existing conditions, project objectives, and design principals for the project. SHKS also presented design options for site accessibility improvements, and programmatic changes that included options for new building additions at the west (rear) side of the building, adjacent to the existing service bays.

Feedback from the ARC was generally favorable to the site accessibility improvement approach of minimizing walkway slope at the east site, noting that further visualizations of the southeast ramping section to assess visual impacts to the existing building.

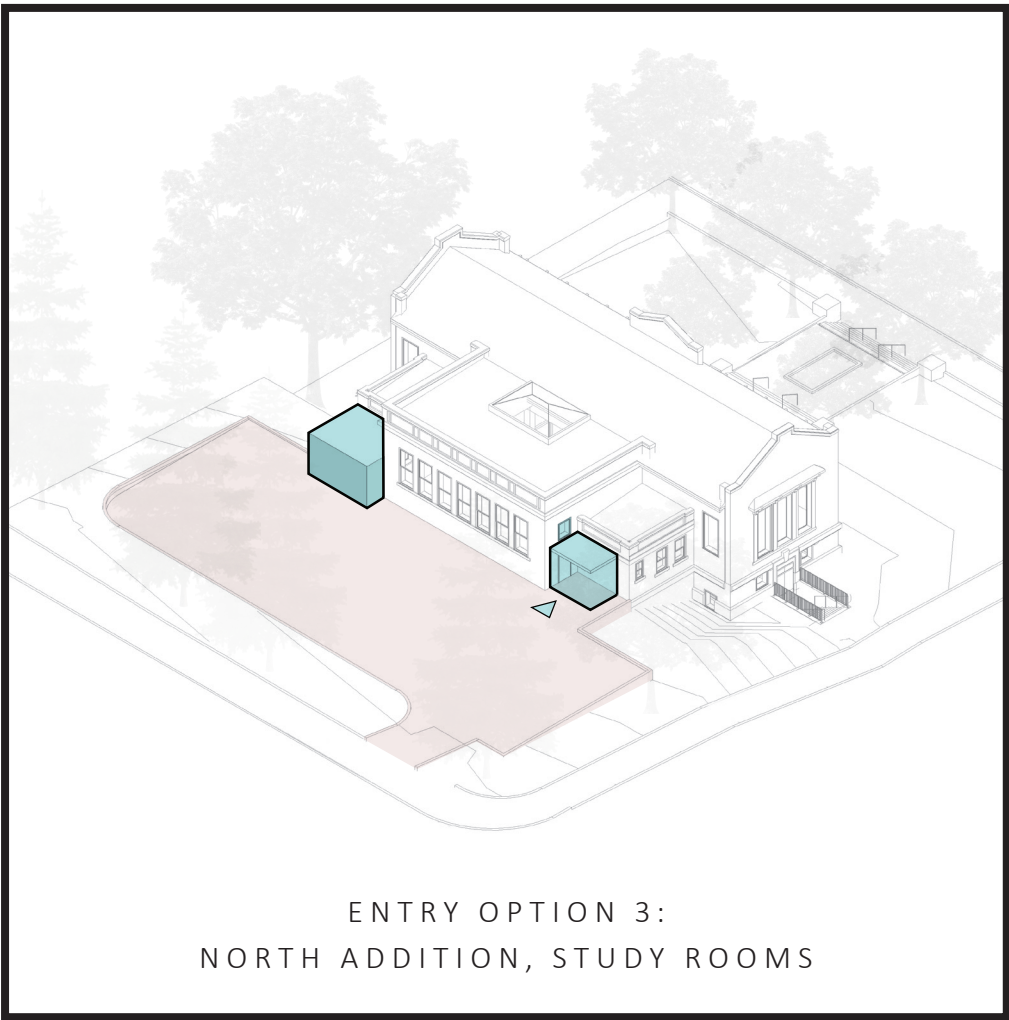
The ARC acknowledged the need for expanded program in meeting the library’s current and future operational needs, and was generally favorable to the location and overall massing of the proposed building additions. The ARC noted that further study would be needed to assess the massing & material relationships between the addition and existing building.



ENTRY OPTION 1:  
MODIFIED ENTRY, CENTRAL WORKROOM



ENTRY OPTION 2:  
SOUTH ADDITION, WORKROOM



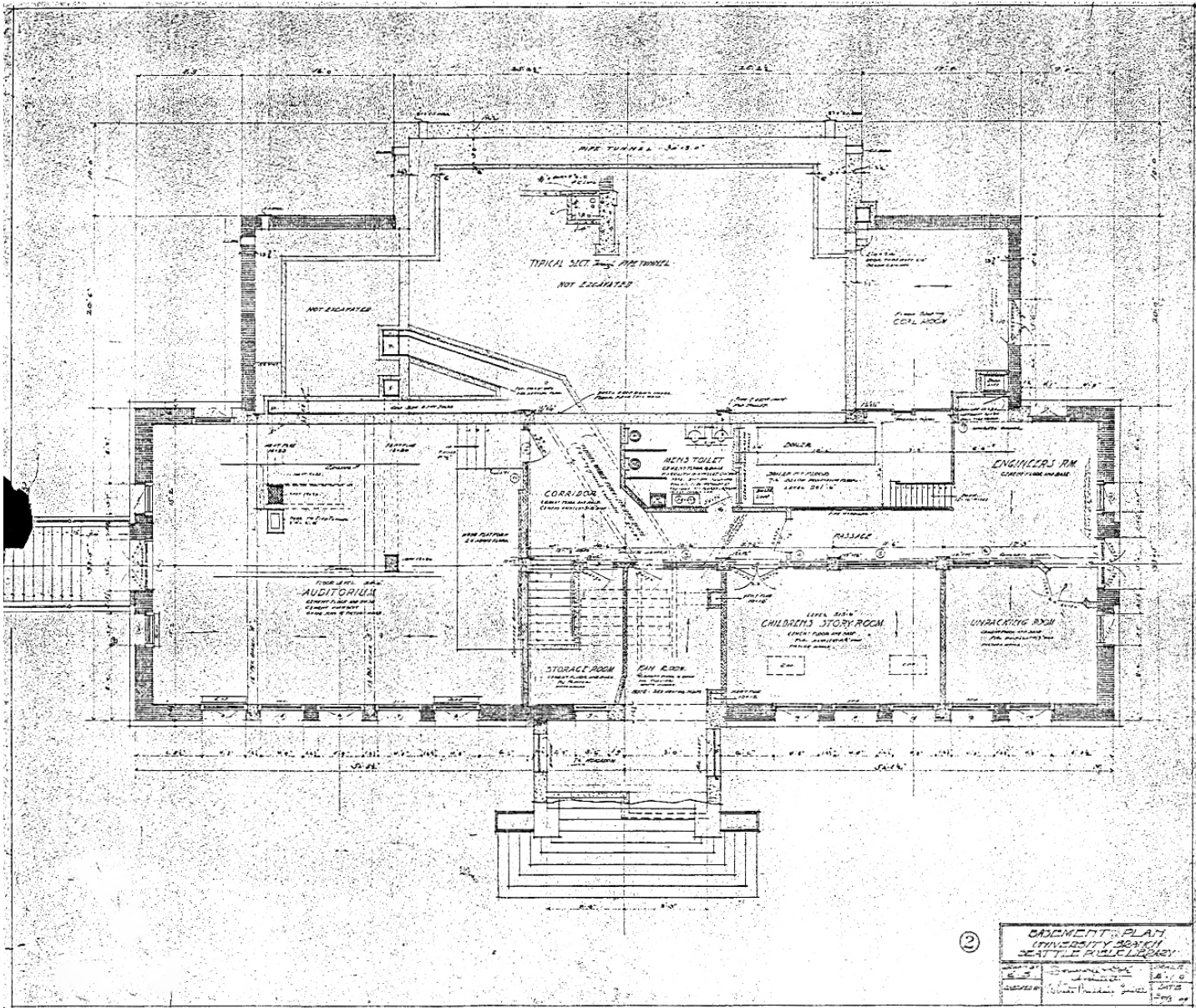
ENTRY OPTION 3:  
NORTH ADDITION, STUDY ROOMS

PREFERRED OPTION FOLLOWING  
07.15.22 ARC GUIDANCE BRIEFING

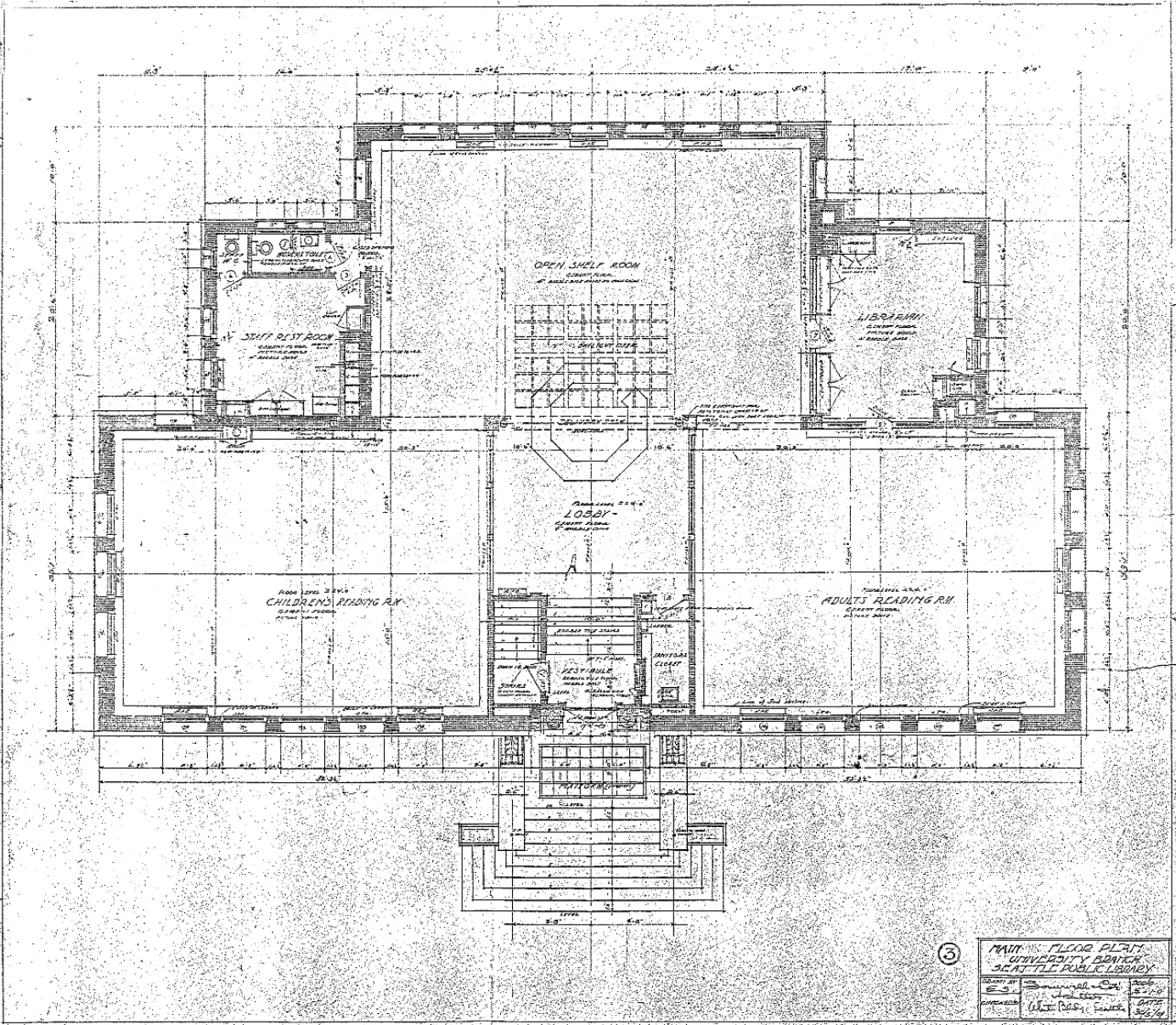


BUILDING HISTORY + EXISTING CONDITIONS

ORIGINAL DRAWINGS



BASEMENT (LOWER LEVEL) PLAN



MAIN FLOOR (MAIN LEVEL) PLAN

BUILDING HISTORY + EXISTING CONDITIONS

EXISTING PHOTOS - EXTERIOR



EAST ELEVATION (MAIN ENTRY)



SOUTHEAST SITE + FACADE



SOUTHWEST ENTRY



NORTHEAST SITE + FACADE

# BUILDING HISTORY + EXISTING CONDITIONS

EAST ELEVATION - ROOSEVELT WAY NE



EAST ELEVATION - CHARACTER DEFINING FEATURES



EAST ELEVATION 1910

- GABLE ROOF
- GLAZED TERRA COTTA ROOF TILE
- RECESSED FRONT ENTRY
- PUNCHED WINDOW OPENINGS
- STRONG VERTICAL QUALITY
- CEMENT STUCCO CLADDING
- CONCRETE RETAINING WALLS
- GRAND ENTRANCE AND FORMAL SYMMETRY

# BUILDING HISTORY + EXISTING CONDITIONS

SOUTH ELEVATION - NE 50TH STREET



SOUTH ELEVATION - CHARACTER DEFINING FEATURES



SOUTHEAST OBLIQUE 1930

- GLAZED TERRA COTTA ROOF TILE
- DESCENDING SCALE OF SERVICE BAYS
  - CUBIC FORM
  - SIMPLIFIED ORNAMENTATION
  - LOW SLOPE ROOF
- PUNCHED WINDOW OPENINGS  
STRONG VERTICAL QUALITY
- RECESSED ENTRY

# BUILDING HISTORY + EXISTING CONDITIONS

WEST ELEVATION - 9TH AVENUE NE



- GLAZED TERRA COTTA ROOF TILE
- DESCENDING SCALE OF SERVICE BAYS
  - CUBIC FORM
  - SIMPLIFIED ORNAMENTATION
  - LOW SLOPE ROOF
- PUNCHED WINDOW OPENINGS
- STRONG VERTICAL QUALITY
- STUCCO CLADDING OVER HOLLOW CLAY TILE

WEST ELEVATION - CHARACTER DEFINING FEATURES

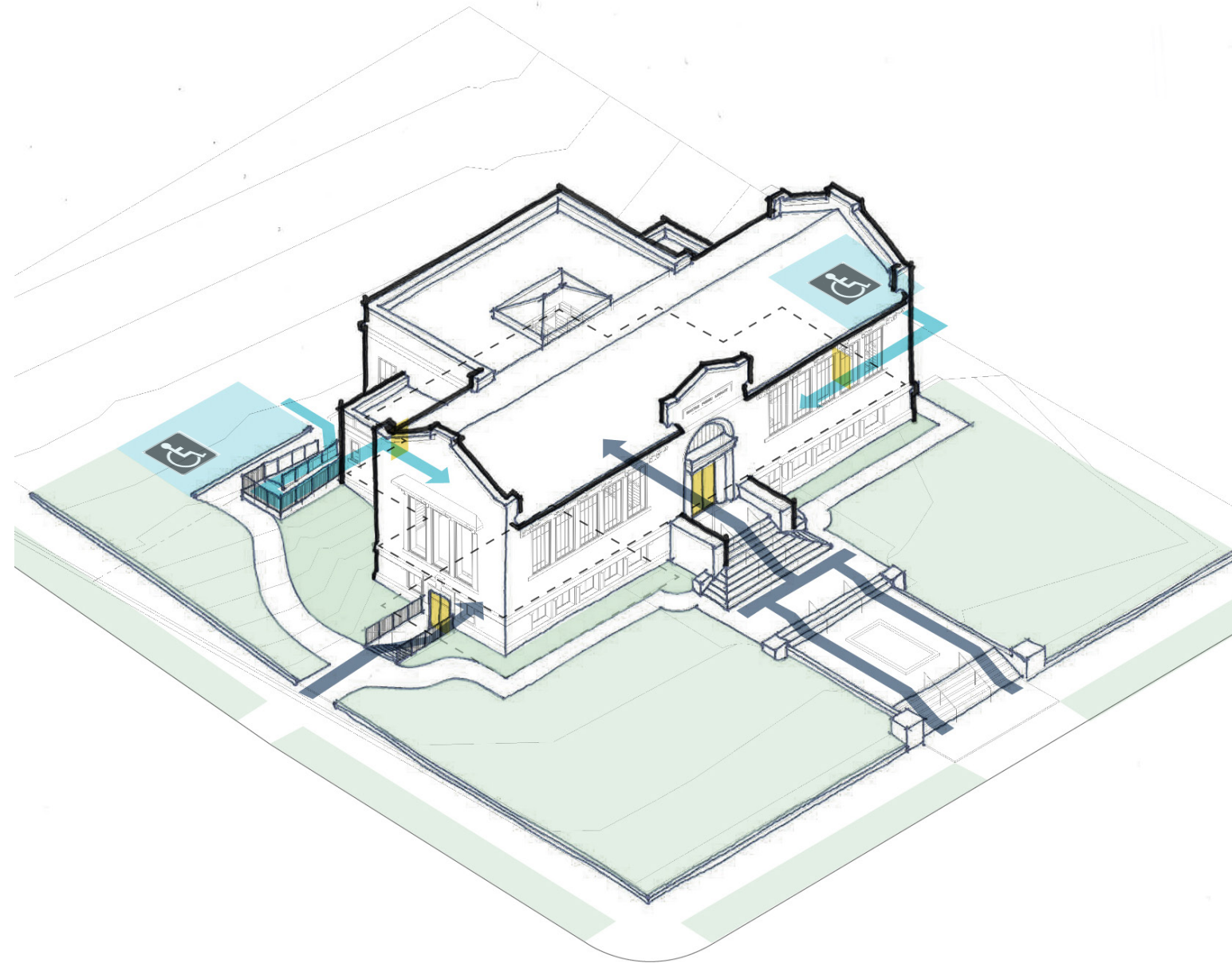
## 1. PROJECT OBJECTIVES

## 2. BUILDING HISTORY + EXISTING CONDITIONS

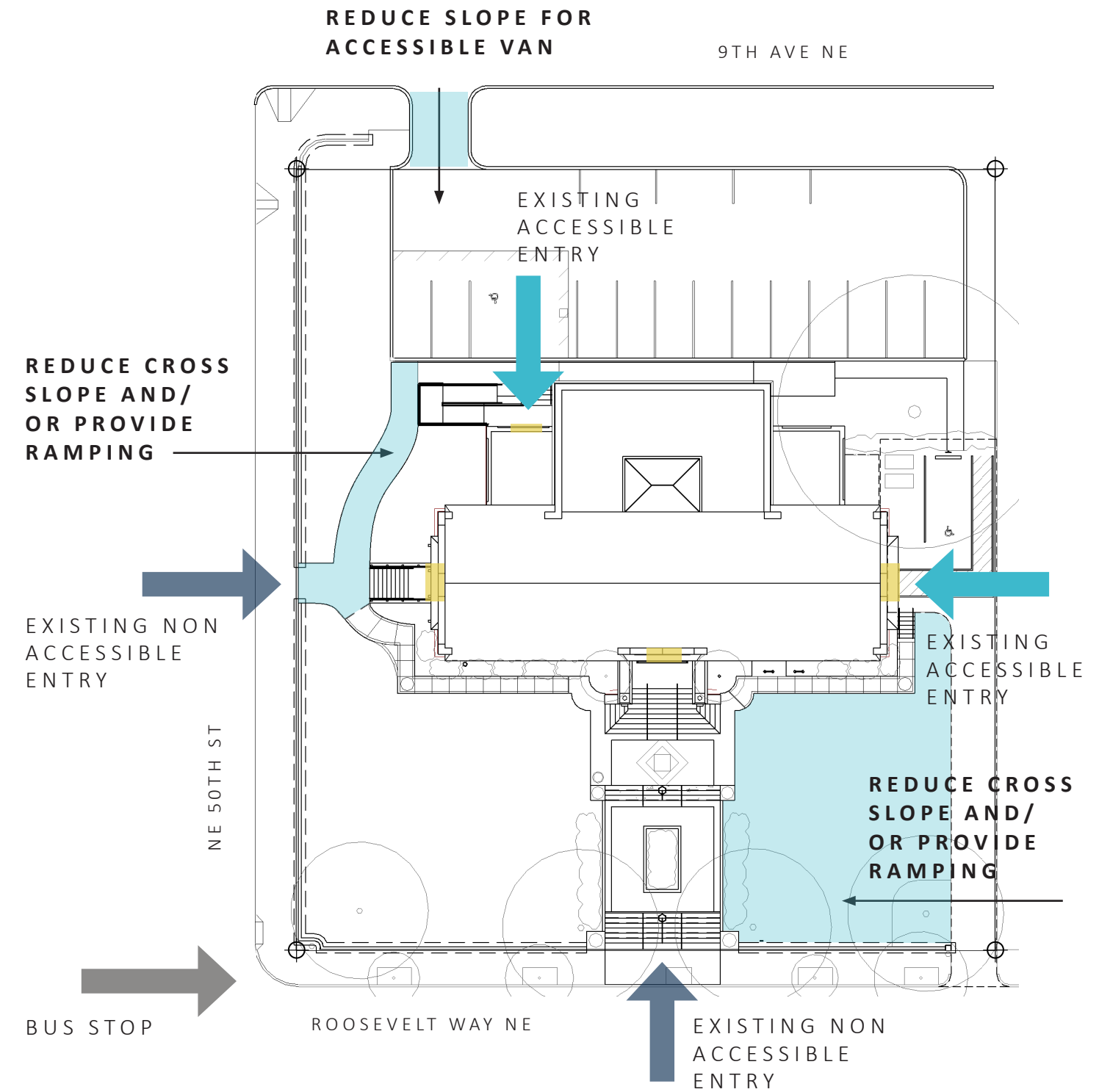
## 3. DESIGN PROPOSALS

- \* • SITE ACCESSIBILITY IMPROVEMENTS
- BUILDING EXTERIOR MODIFICATIONS + ADDITIONS
- INTERIOR MODIFICATIONS

## EXISTING SITE & ENTRY ACCESSIBILITY

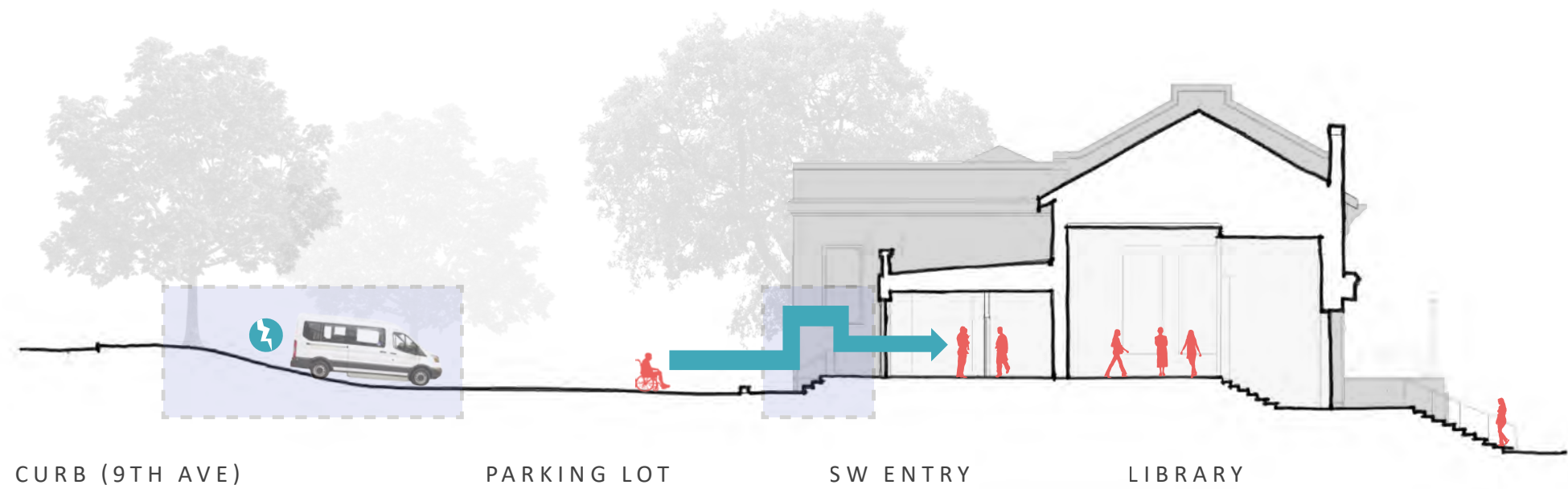


ACCESSIBLE
  NON-ACCESSIBLE
  BUILDING ENTRY

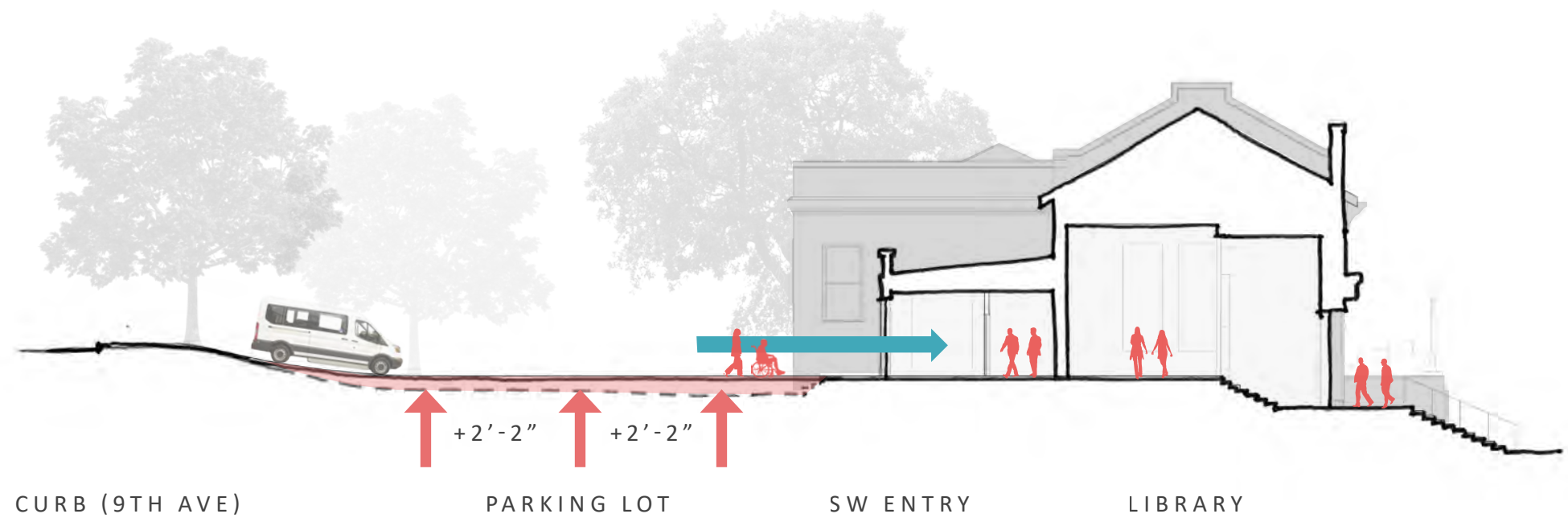


# SITE ACCESSIBILITY IMPROVEMENTS

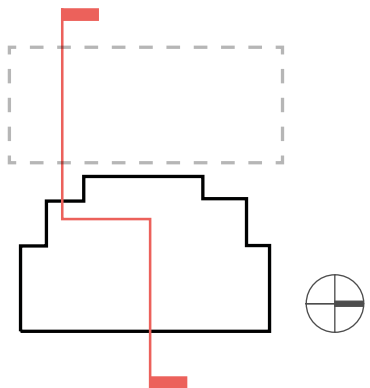
## RAISED PARKING



EXISTING CONDITION

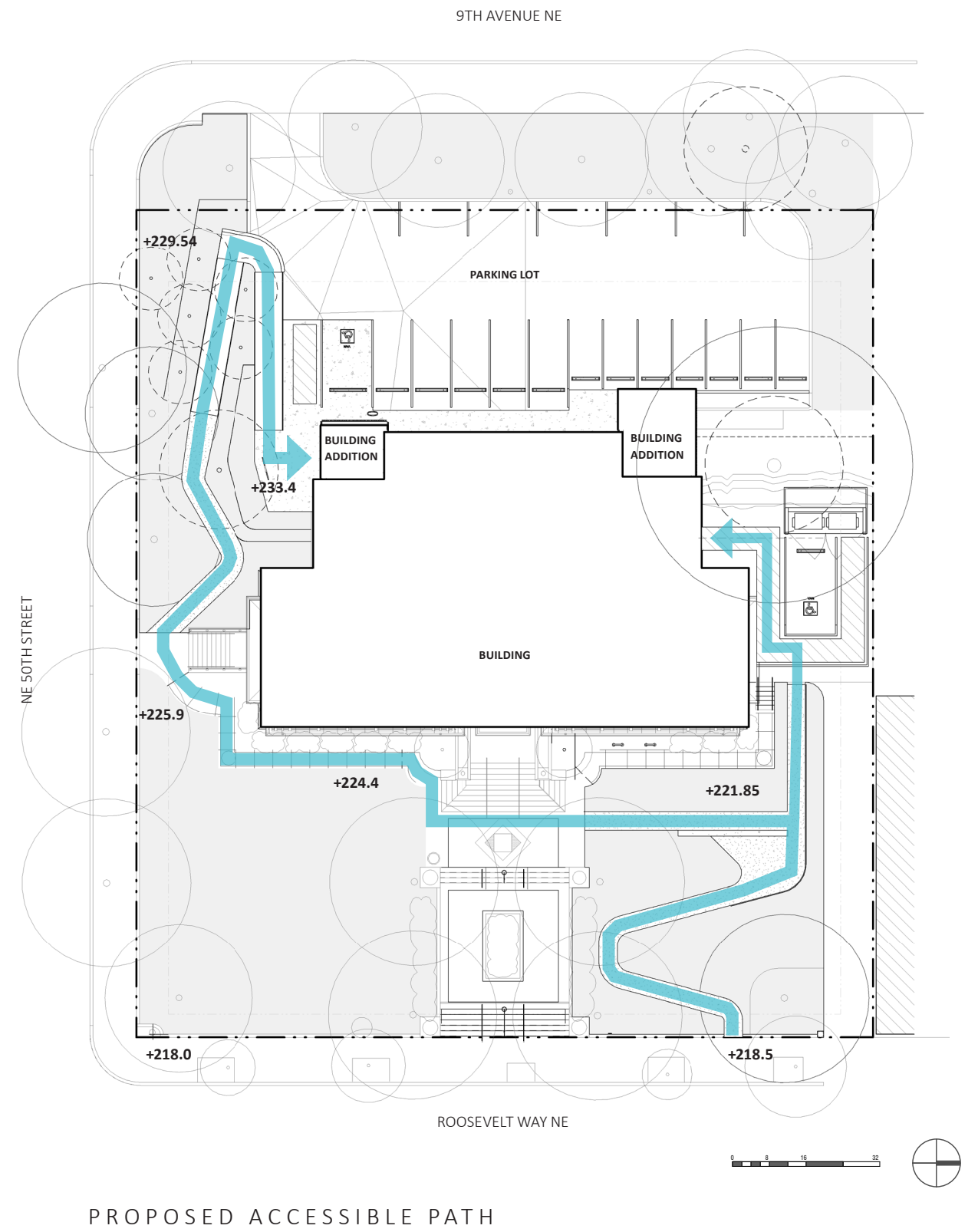
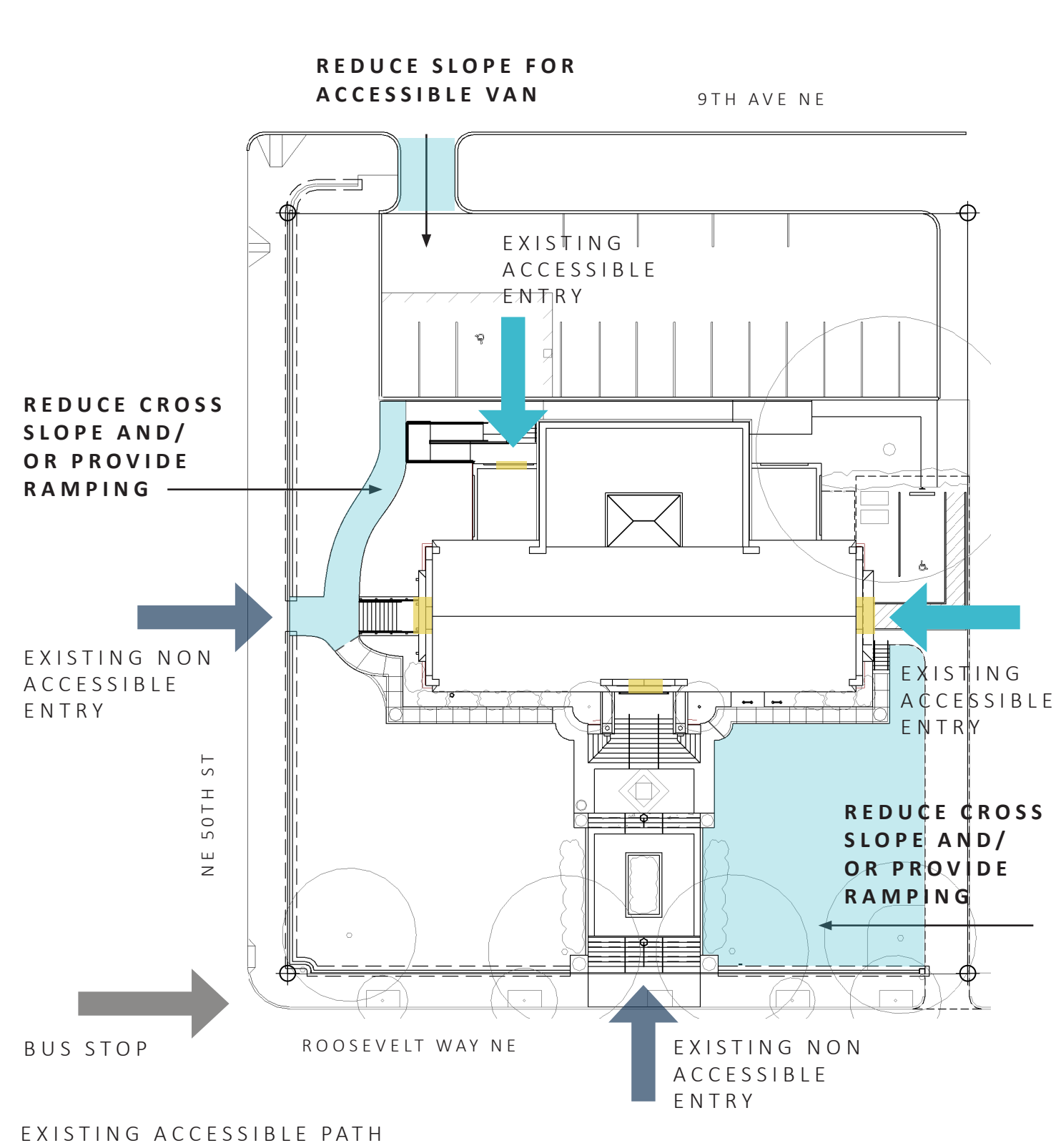


RAISED PARKING



# SITE ACCESSIBILITY IMPROVEMENTS

## PROPOSED ACCESSIBLE PATH





With the addition/renovation of the University Branch Library, an understanding of existing neoclassical elements and how they can be incorporated is important. Modern designs that embrace the solid, monumental characteristics can weave together the existing site elements while improving overall site accessibility and providing additional programmed space for seating and gathering. These site and precedent images demonstrate the potential ways in which to construct new elements that are sensitive to and integrate with existing conditions.

With the insertion of new elements into the site, the consideration of how much to integrate the neoclassical style has been studied. Questions included: should the site embrace the style in both form and materials, or deviate? These precedent images demonstrate potential interventions that balance embracing elements of the existing site, while proposing new materials, forms, or both. The proposed design embraces the weight and character of the existing building and site, while allowing the structural landscape elements to compliment, rather than compete.

# INTEGRATING THE PAST + CONTEMPORARY INSERTIONS

SWIFT COMPANY LLC

SPL UNIVERSITY BRANCH | SITE ADA OPPORTUNITIES

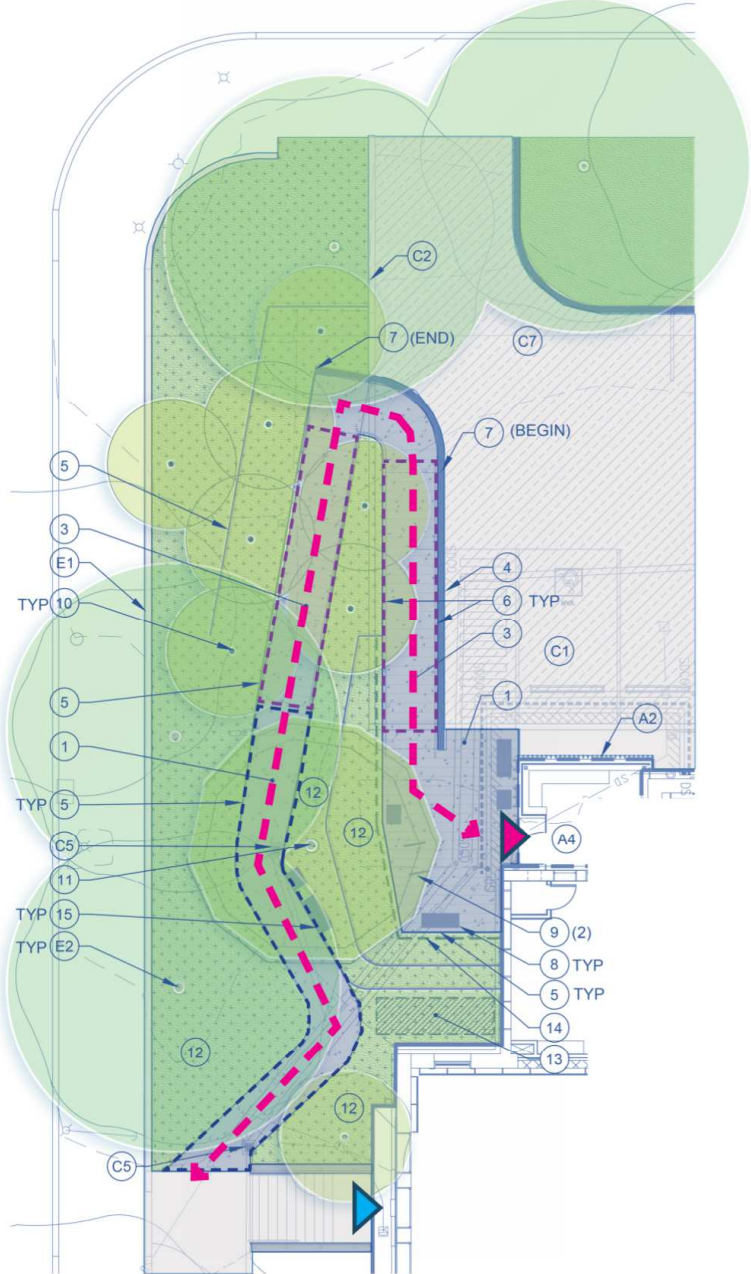
LEGEND

- BUILDING ENTRIES
- ACCESSIBLE BUILDING ENTRIES
- ADA ACCESS ROUTE
- ADA ACCESSIBLE RAMP
- SLOPED WALK

MATERIALS SCHEDULE:

- (E1) EXISTING CURB/WALL - PROTECT IN PLACE
- (E2) EXISTING TREE TO REMAIN - PROTECT IN PLACE
- (E3) EXISTING SIGNIFICANT TREE TO REMAIN, SEE CIVIL FOR TREE PROTECTION
- (E4) LAWN, PROTECT IN PLACE OR RESTORE, INCLUDING IRRIGATION
- (1) CIP CONC PAVEMENT - SAWCUT JOINTS, MED SANDBLAST FINISH
- (2) PERMEABLE POROUS PAVEMENT
- (3) ADA RAMP - CIP CONC SAWCUT JOINTS MEDIUM SANDBLAST
- (4) CIP CONC RETAINING WALL W/ CIP CONC FTG
- (5) STEEL RETAINING WALL W/ CIP CONC FTG, PAINTED
- (6) STAINLESS STEEL HANDRAIL
- (7) GUARDRAIL
- (8) SEAT WALL - CIP CONC W/ WOOD TOP, SS FRAME, W/ CIP CONC FTG
- (9) BICYCLE RACK - SPORTWORKS TOFINO SURFACE MOUNT
- (10) SMALL SHADE TREE
- (11) LARGE SPECIMEN TREE
- (12) SHRUB/GROUNDCOVER PLANTING AREA
- (13) STORMWATER OUTFALL
- (14) VINE WALL
- (15) WOOD SEAT TOP ON STEEL FRAME
- (A1) BUILDING EDGE, SEE ARCH
- (A2) BUILDING ADDITION, SEE ARCH
- (A4) BUILDING ENTRY, SEE ARCH
- (C1) CONC PAVEMENT, SEE CIVIL
- (C2) CONC CURB, SEE CIVIL
- (C4) UTILITY VAULT, SEE CIVIL
- (C5) DRAIN, SEE CIVIL
- (C6) ROCKERY, SEE CIVIL
- (C7) ASPHALT DRIVE, SEE CIVIL

SITE PLAN - NE 50TH ST ACCESS



1 LANDSCAPE PLAN AREA 1

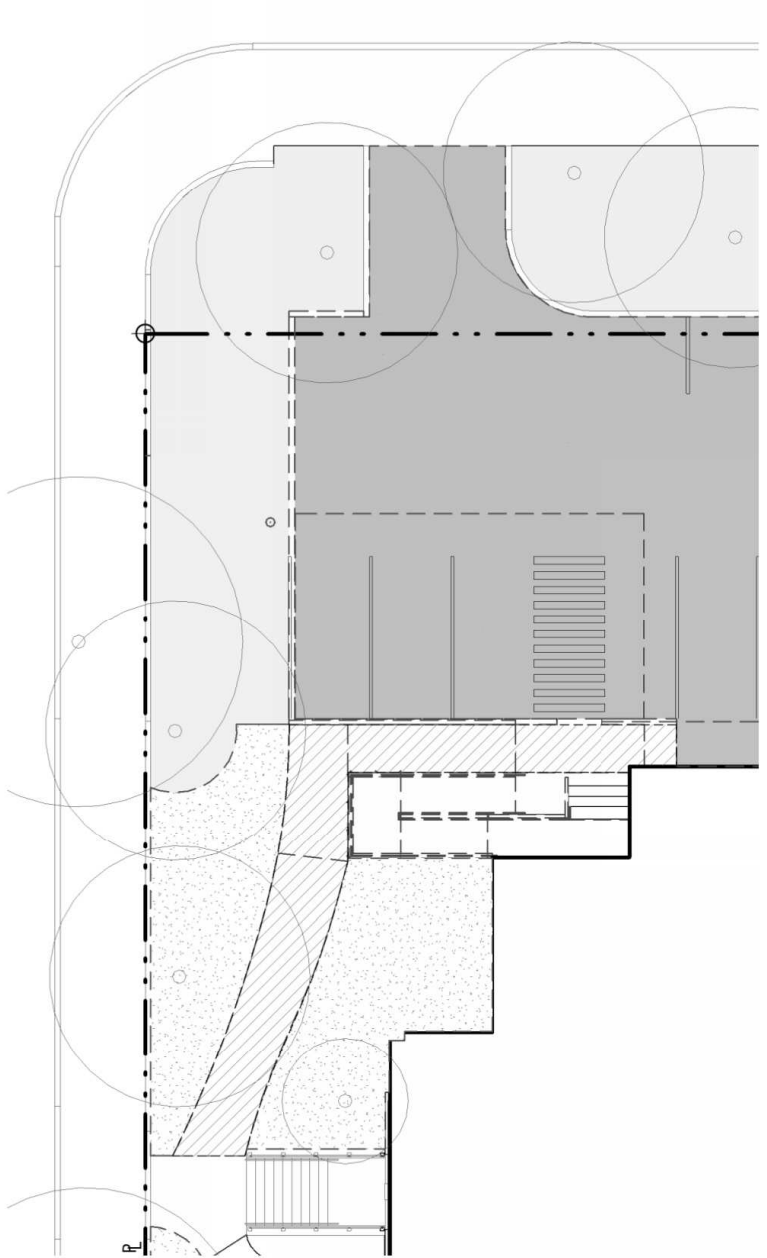
SCALE: 1" = 10'-0"

PLANT LEGEND:

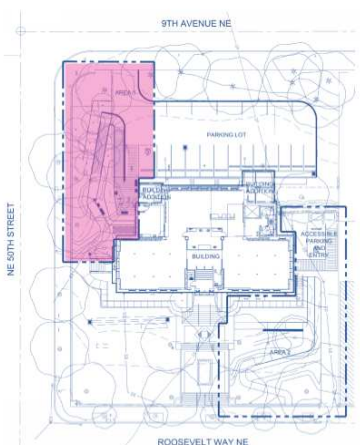
QTY	SMALL SHADE TREE OPTIONS:	QTY	SHRUB AND GROUNDCOVER OPTIONS:	QTY
7	ACER PALMATUM AMELANCHIA ALBIFOLIA CORNUS X RUTGERSSENSIS TRUTDAN STEWARTIA PSEUDOCAMELLIA	2,529 SF	GAULTHERIA SHALLON LAVANDULA ANGUSTIFOLIA LONICERA PILEATA MAHONIA AQUIFOLIUM PRUNUS LAUROCERASUS 'MOUNT VERNON' POLYSTICHUM MUNITUM VACCINIUM CORYMBOSUM VIRGA FRAGARIA CHILCENSIS MINOR	
2	LARGE FEATURE TREE OPTIONS: ACER RUBRUM 'AUTUMN RED' NYSSA SYLVIATICA QUERCUS BRISOLUX ZELKOVA SERRATA			



EXISTING - NE 50TH ST ACCESS



KEY MAP



SWIFT COMPANY LLC

SW SITE AREA - NE 50TH ST ACCESS

LEGEND

X PERSPECTIVE VIEWS



NORTH ELEVATION

SWIFT COMPANY LLC

PERSPECTIVE VIEWS



SWIFT COMPANY LLC

PERSPECTIVE VIEWS



SWIFT COMPANY LLC

SPL UNIVERSITY BRANCH | SITE ADA OPPORTUNITIES

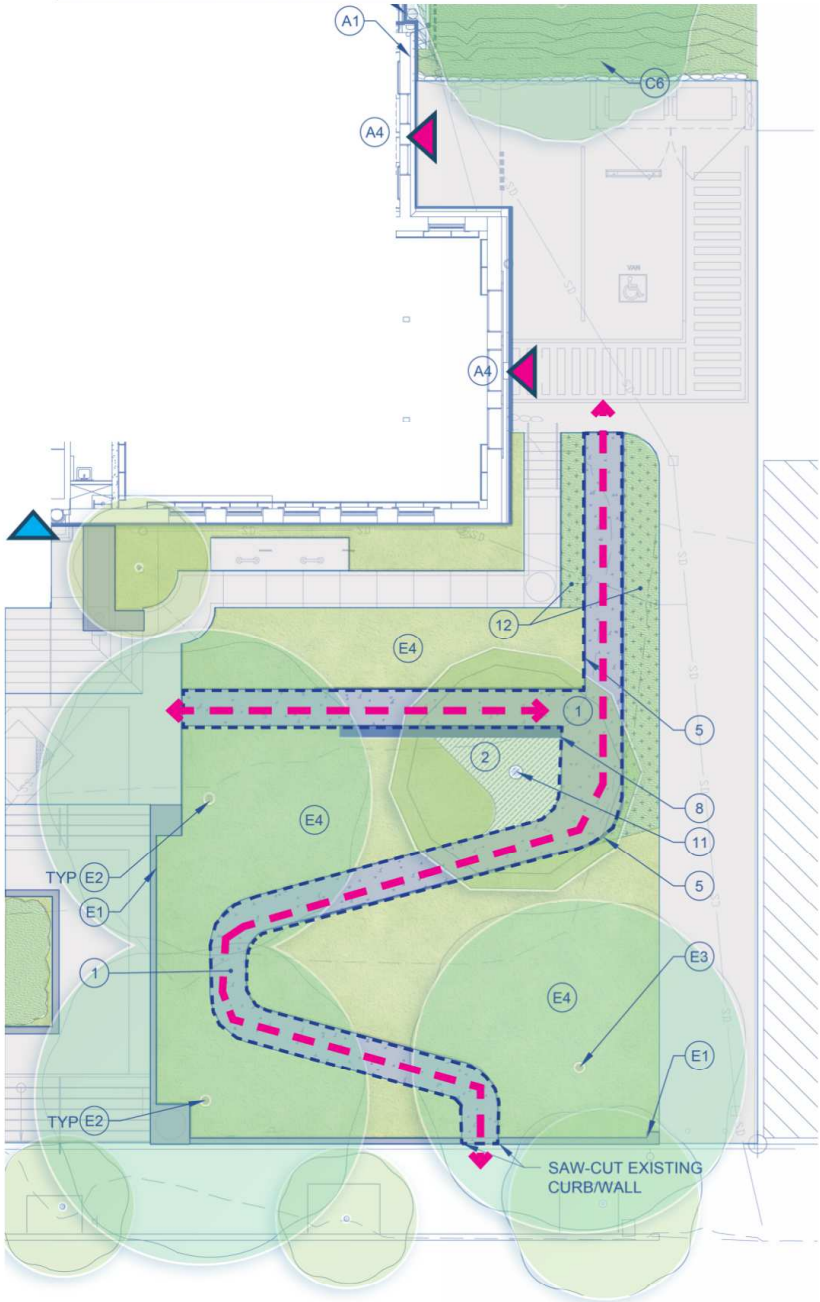
LEGEND

- BUILDING ENTRIES
- ACCESSIBLE BUILDING ENTRIES
- ADA ACCESS ROUTE
- SLOPED WALK

MATERIALS SCHEDULE:

- (E1) EXISTING CURB/WALL - PROTECT IN PLACE
- (E2) EXISTING TREE TO REMAIN - PROTECT IN PLACE
- (E3) EXISTING SIGNIFICANT TREE TO REMAIN, SEE CIVIL FOR TREE PROTECTION
- (E4) LAWN, PROTECT IN PLACE OR RESTORE, INCLUDING IRRIGATION
- (1) CIP CONC PAVEMENT - SAWCUT JOINTS, MED SANDBLAST FINISH
- (2) PERMEABLE POROUS PAVEMENT
- (3) ADA RAMP - CIP CONC SAWCUT JOINTS MEDIUM SANDBLAST
- (4) CIP CONC RETAINING WALL W/ CIP CONC FTG
- (5) STEEL RETAINING WALL W/ CIP CONC FTG, PAINTED
- (6) STAINLESS STEEL HANDRAIL
- (7) GUARDRAIL
- (8) SEAT WALL - CIP CONC W/ WOOD TOP, SS FRAME, W/ CIP CONC FTG
- (9) BICYCLE RACK - SPORTWORKS TOPINO SURFACE MOUNT
- (10) SMALL SHADE TREE
- (11) LARGE SPECIMEN TREE
- (12) SHRUB/GROUNDCOVER PLANTING AREA
- (13) STORMWATER OUTFALL
- (14) VINE WALL
- (15) WOOD SEAT TOP ON STEEL FRAME
- (A1) BUILDING EDGE, SEE ARCH
- (A2) BUILDING ADDITION, SEE ARCH
- (A4) BUILDING ENTRY, SEE ARCH
- (C1) CONC PAVEMENT, SEE CIVIL
- (C2) CONC CURB, SEE CIVIL
- (C4) UTILITY VAULT, SEE CIVIL
- (C5) DRAIN, SEE CIVIL
- (C6) ROCKERY, SEE CIVIL
- (C7) ASPHALT DRIVE, SEE CIVIL

SITE PLAN - ROOSEVELT WAY NE ACCESS



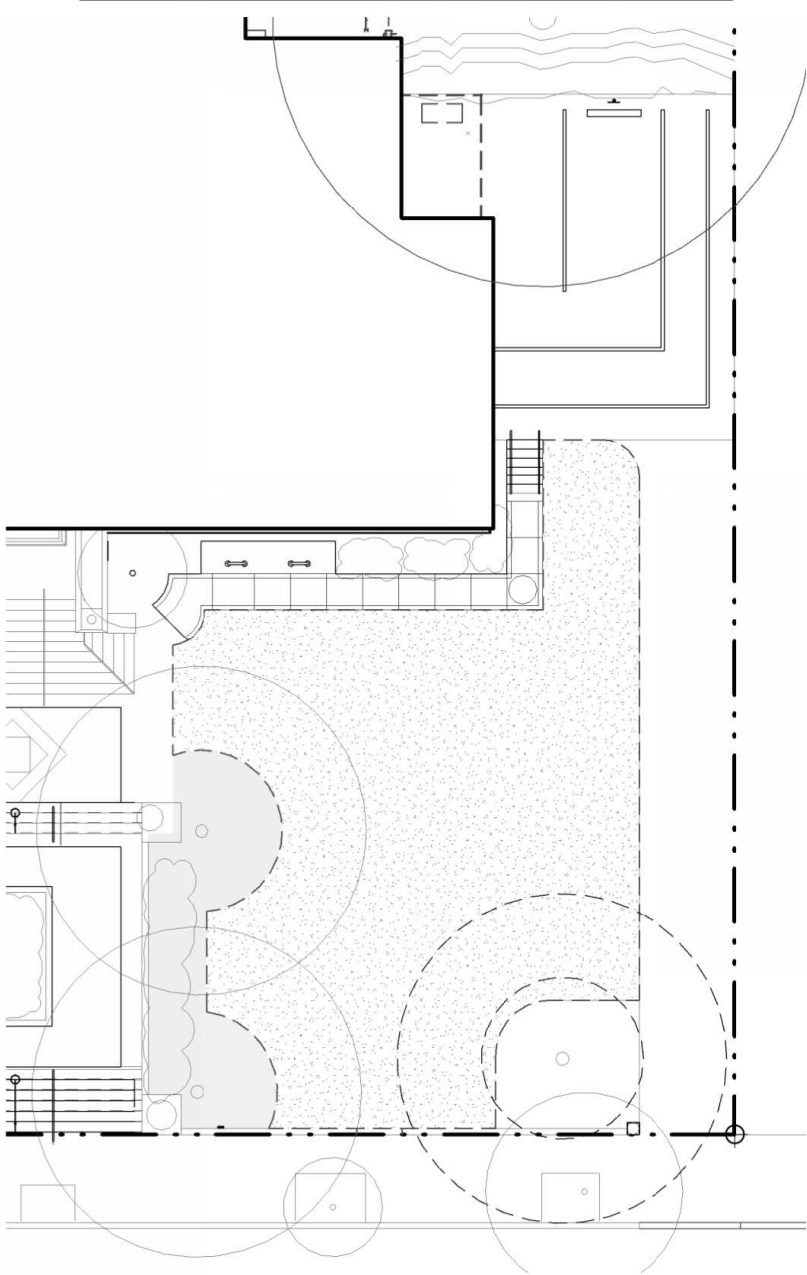
2 LANDSCAPE PLAN AREA 2

SCALE: 1" = 10'-0"

PLANT LEGEND:

	QTY		QTY
SMALL SHADE TREE OPTIONS:	7	SHRUB AND GROUNDCOVER OPTIONS:	2,529 SF
ACER PALMATUM		GAULTHERIA SHALLON	
AMPELOPSIS ALIFOLIA		LAVANDULA ANGUSTIFOLIA	
CORNUS X RUTGERSIENSIS 'RUTDAN'		LONICERA PILEATA	
STEWARTIA PSEUDOCAMELIA		MAHONIA AQUIFOLIUM	
		PRUNUS LAUROCEASUS 'MOUNT VERNON'	
LARGE FEATURE TREE OPTIONS:	2	POLYSTICHUM MUNITUM	
ACER RUBRUM 'AUTUMN RED'		VACCINIUM CORYMBOSUM	
NYSSA SYLVATICA		VINCA FRAGARIA CHLOENSIS MINOR	
QUERCUS BICOLOR			
ZELKOVA SERRATA			

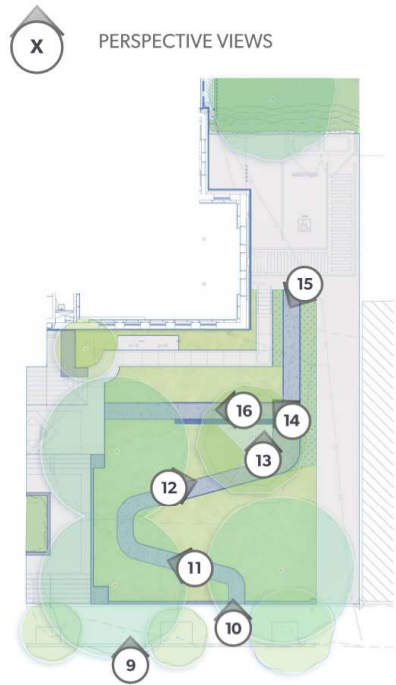
EXISTING - ROOSEVELT WAY NE ACCESS



SWIFT COMPANY LLC

NE SITE AREA - ROOSEVELT WAY NE ACCESS

LEGEND



SOUTH ELEVATION

SWIFT COMPANY LLC

PERSPECTIVE VIEWS



SWIFT COMPANY LLC

PERSPECTIVE VIEWS

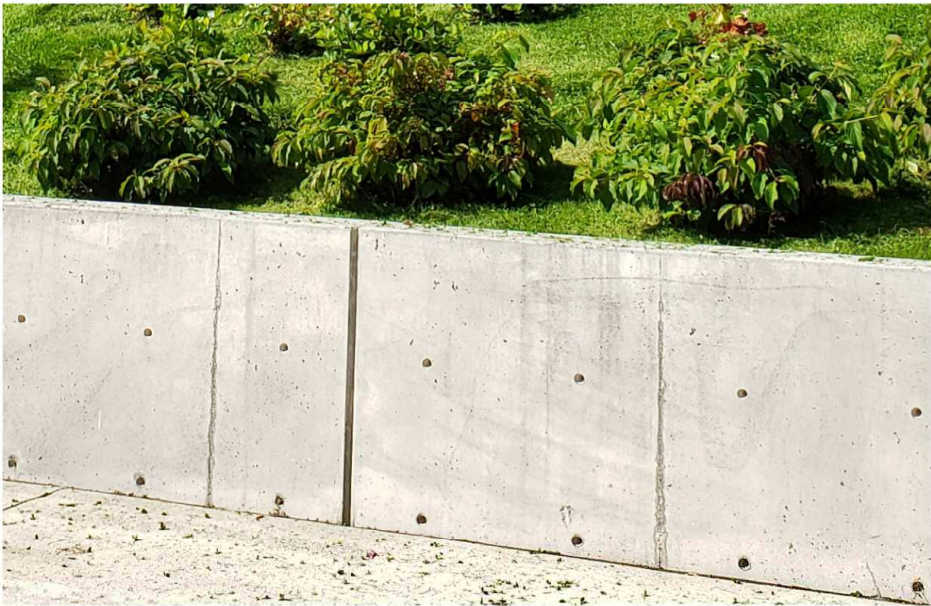


SWIFT COMPANY LLC

PERSPECTIVE VIEWS



SWIFT COMPANY LLC



SWIFT COMPANY LLC

Due to the negotiation of significant grade changes throughout the site, retaining walls will be required in order to provide improved universal accessibility. Retaining walls will be designed to blend as much as possible into the site and be light in their visual impact. Planting will be used in order to minimize visual impact by screening walls where possible.

Concrete walls provide a simple, neutral, solid expression that fits with existing elements.

Although more contemporary, steel walls also provide simple, neutral expressions that allow for more area for planting and negotiation of grading in areas where horizontal space is limited.

SITE MATERIALS

## 1. PROJECT OBJECTIVES

## 2. BUILDING HISTORY + EXISTING CONDITIONS

## 3. DESIGN PROPOSALS

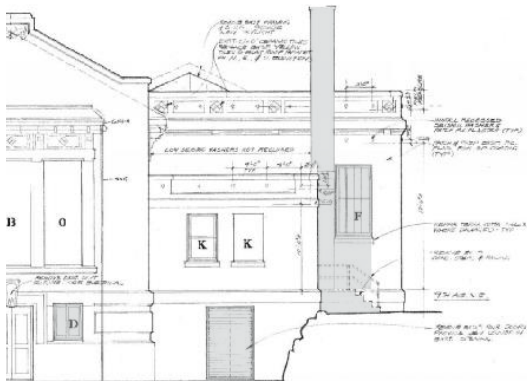
- SITE ACCESSIBILITY IMPROVEMENTS
- \* • BUILDING EXTERIOR MODIFICATIONS + ADDITIONS
- INTERIOR MODIFICATIONS

# BUILDING EXTERIOR MODIFICATIONS + ADDITIONS

EXISTING NORTH ELEVATION



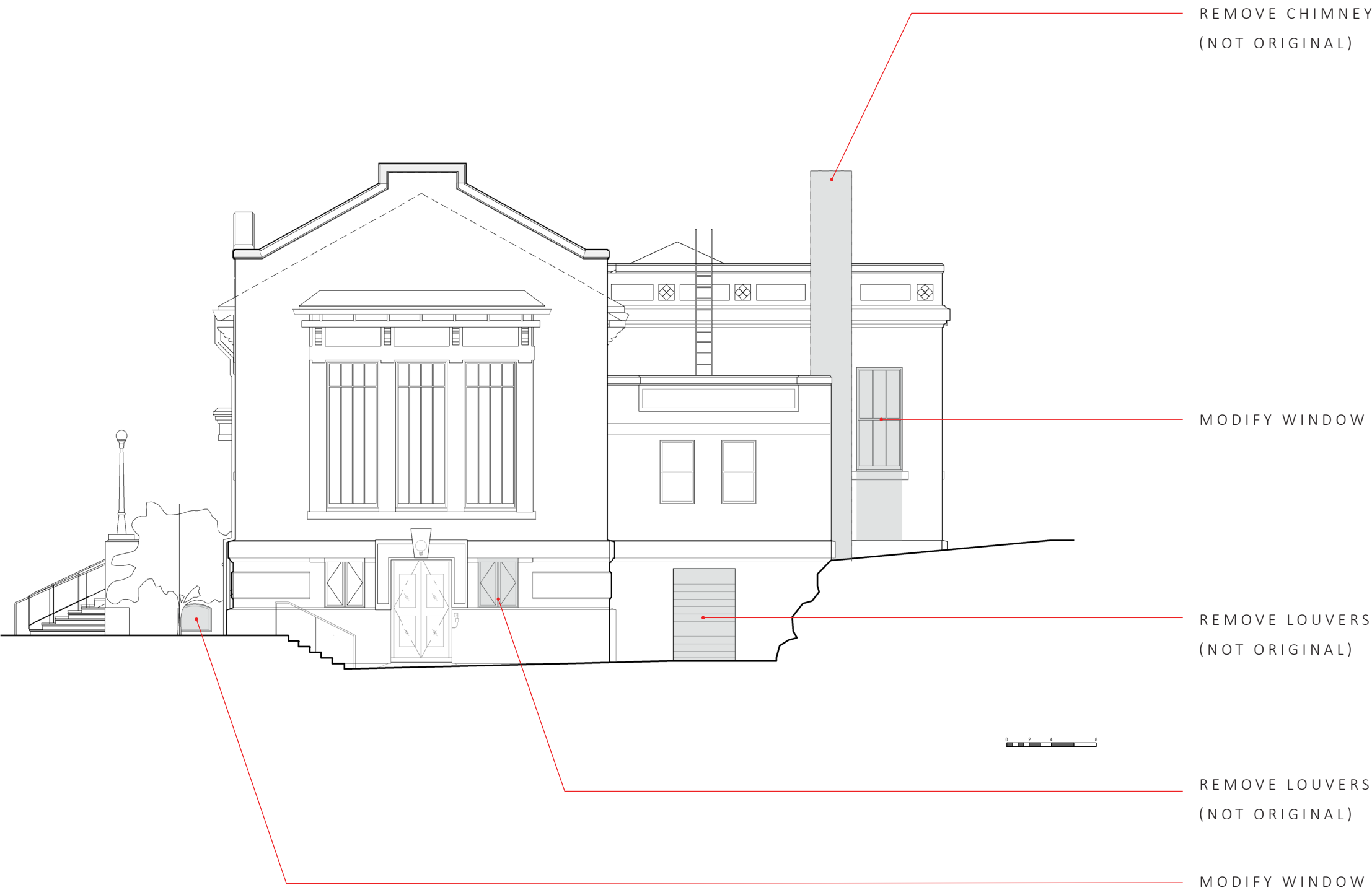
1910



1986



EXISTING

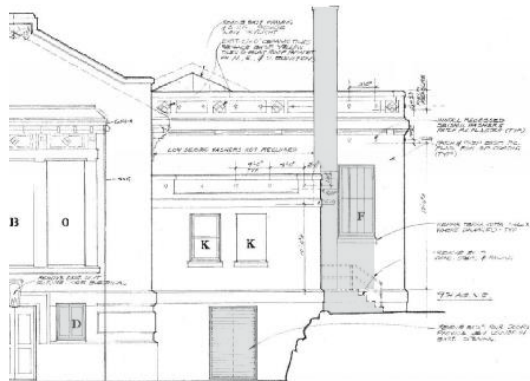


# BUILDING EXTERIOR MODIFICATIONS + ADDITIONS

PROPOSED NORTH ELEVATION



1910



1986



SALVAGE AND REINSTALL  
TILE ROOF PARAPET  
CAPS WITH EMBEDDED  
ANCHORS, TYP

ROOFTOP HVAC UNITS

SKYLIGHT OVER EXISTING  
OPENING

STUDY ADDITION

ENTRY DOOR, TRANSOM,  
AND SKYLIGHT IN  
EXISTING OPENING

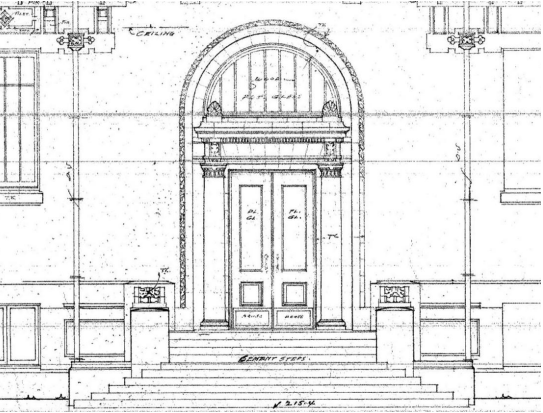
WINDOW - RETURN TO  
1910 DESIGN INTENT

LOUVERS (MECHANICAL  
ROOM)



# BUILDING EXTERIOR MODIFICATIONS + ADDITIONS

EXISTING EAST ELEVATION



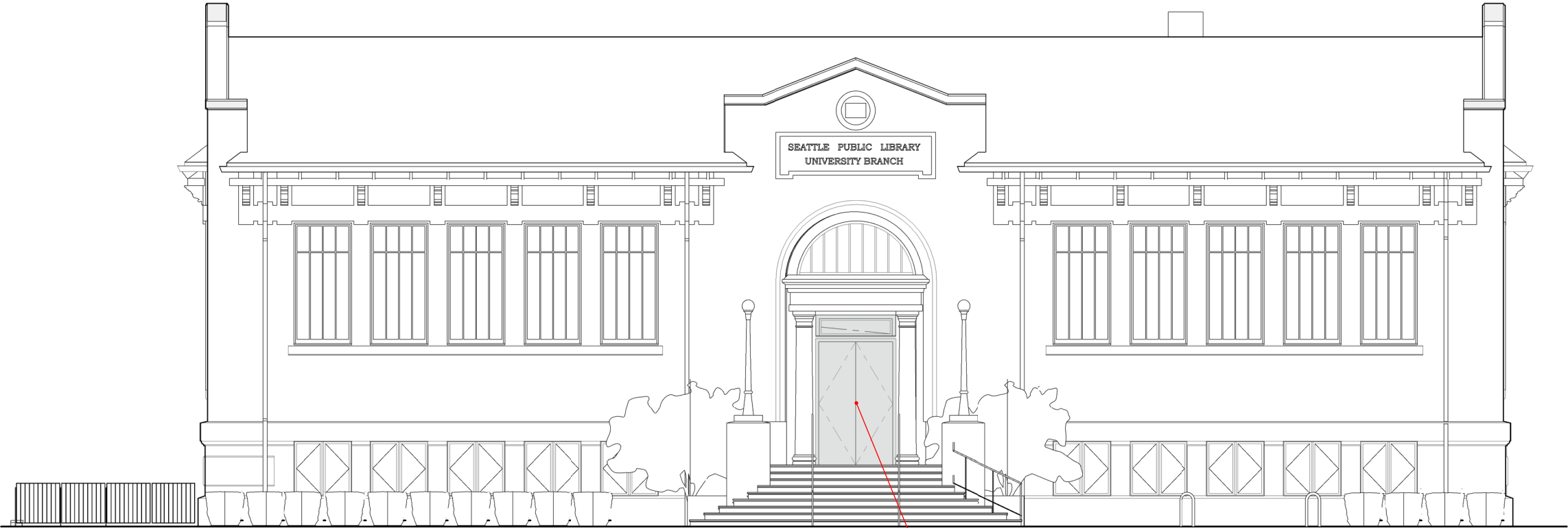
1910



1986



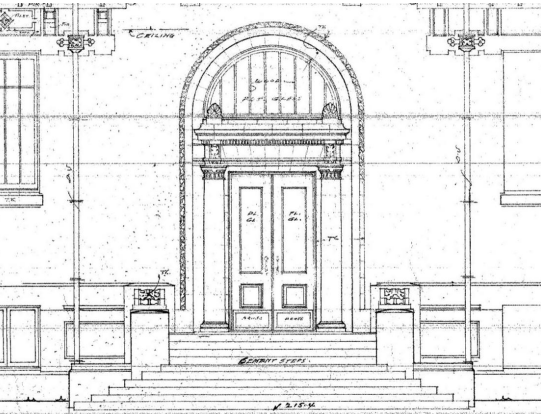
EXISTING



REPLACE DOOR  
(NOT ORIGINAL)

# BUILDING EXTERIOR MODIFICATIONS + ADDITIONS

PROPOSED EAST ELEVATION



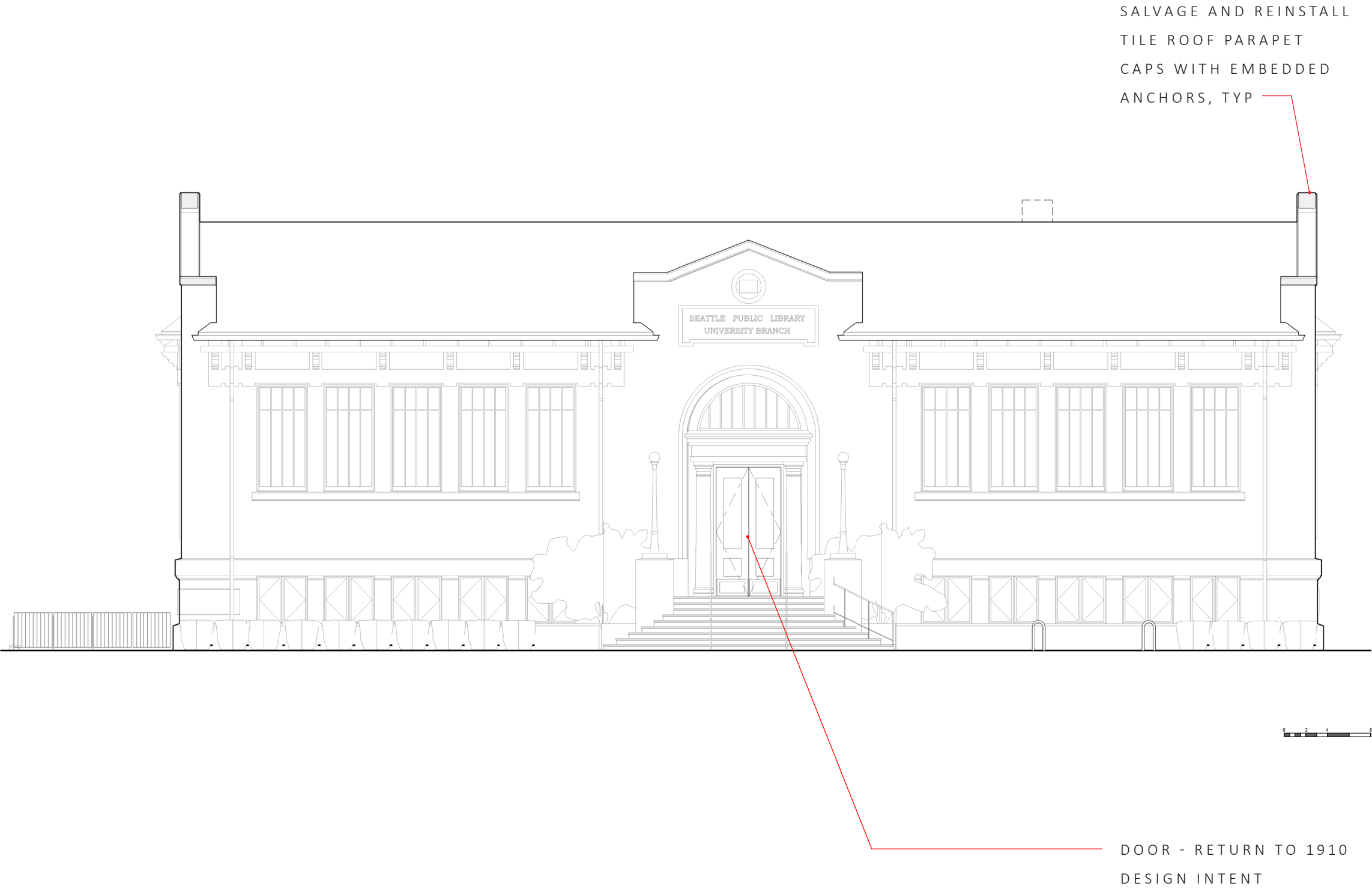
1910



1986

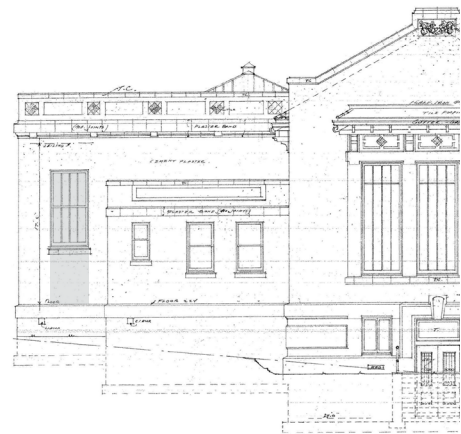
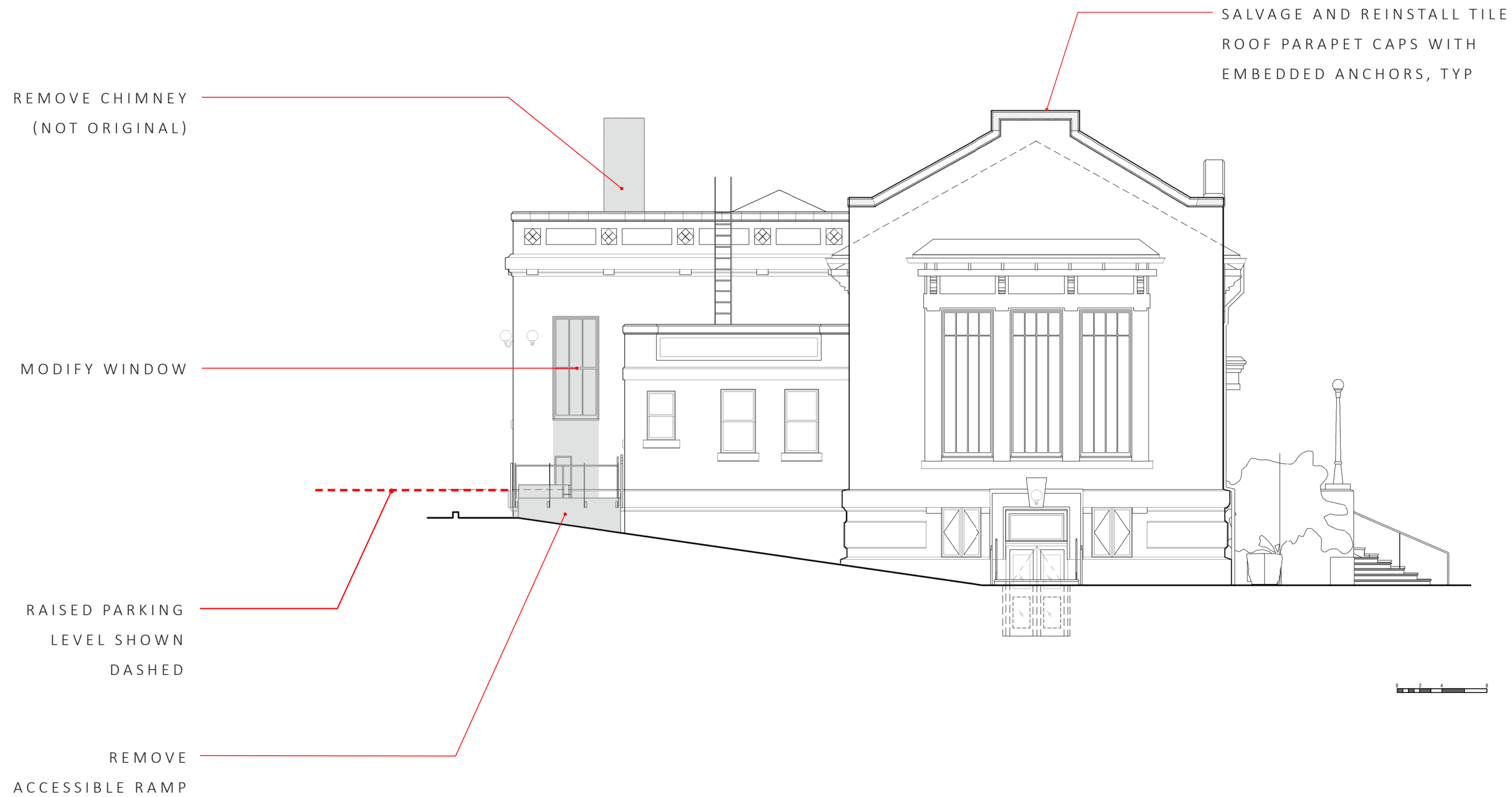


EXISTING

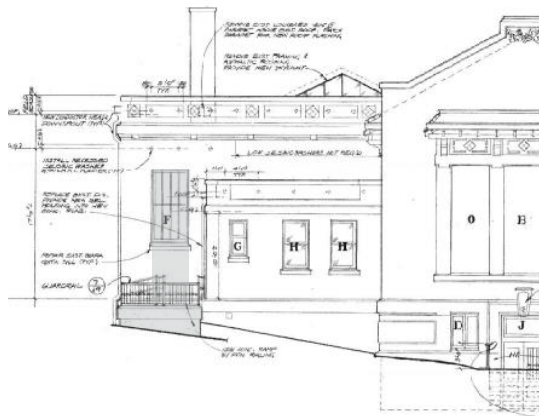


# BUILDING EXTERIOR MODIFICATIONS + ADDITIONS

EXISTING SOUTH ELEVATION



1910



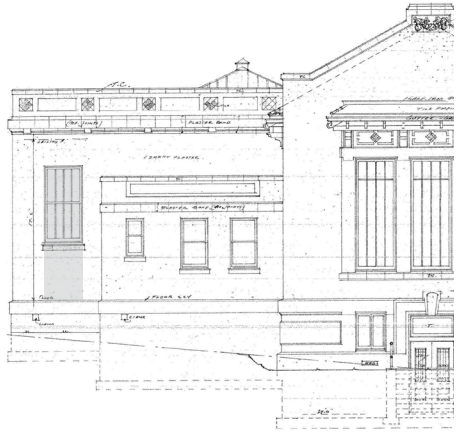
1986



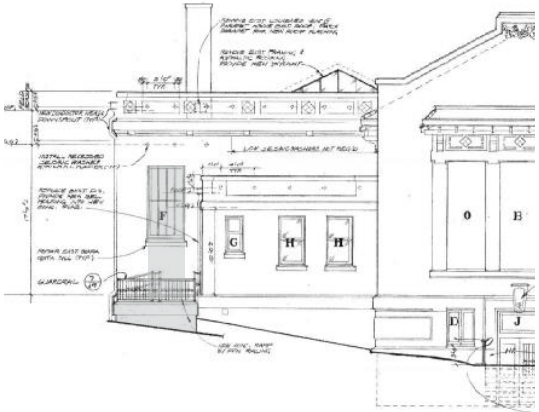
EXISTING

# BUILDING EXTERIOR MODIFICATIONS + ADDITIONS

PROPOSED SOUTH ELEVATION



1910



1986



EXISTING

# BUILDING EXTERIOR MODIFICATIONS + ADDITIONS

## EXISTING WEST ELEVATION

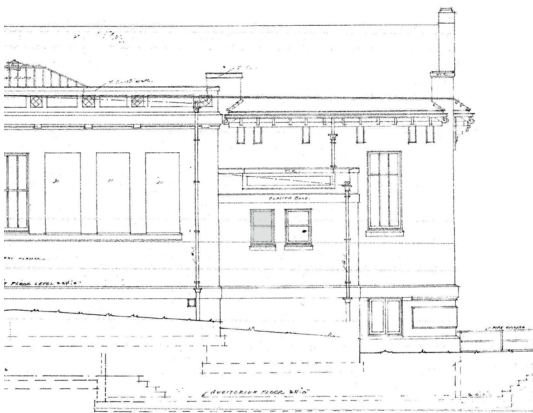
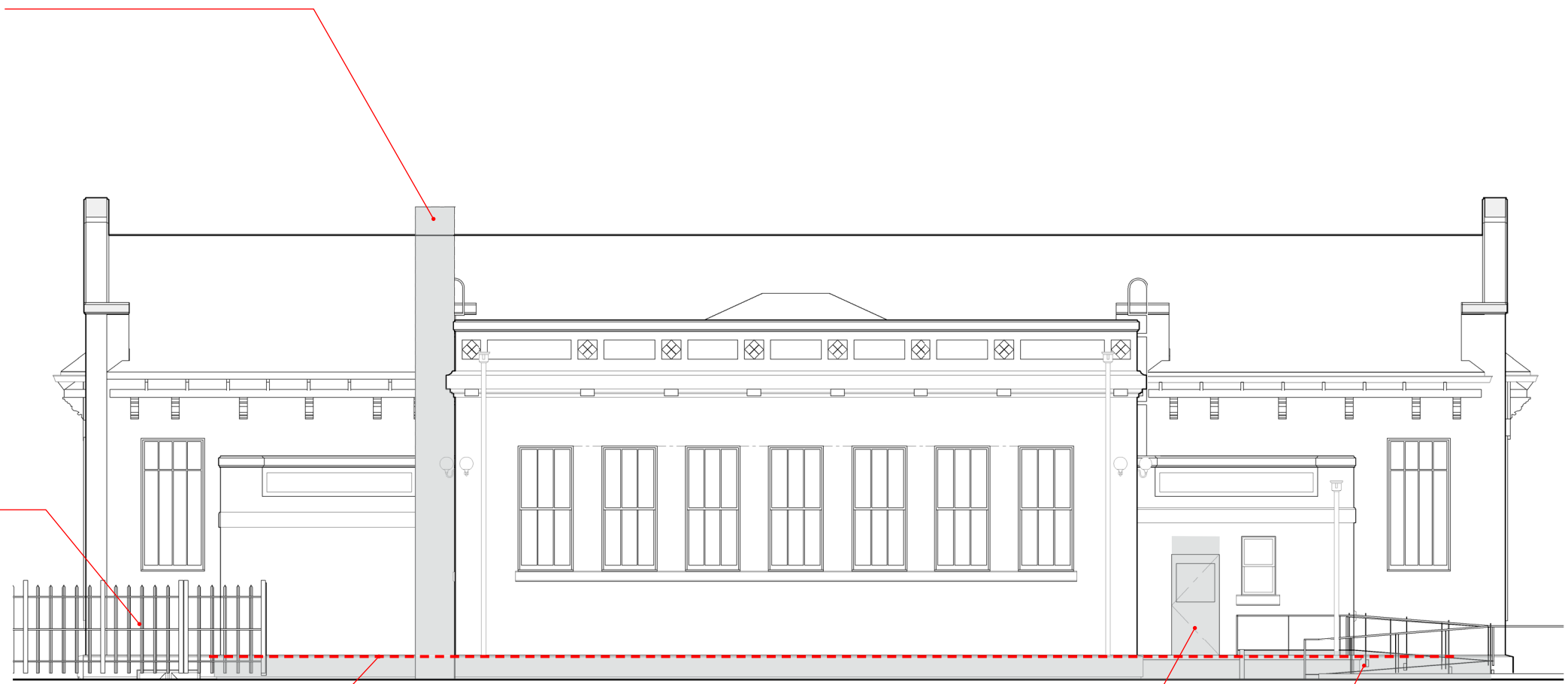
REMOVE CHIMNEY  
(NOT ORIGINAL)

REMOVE FENCE

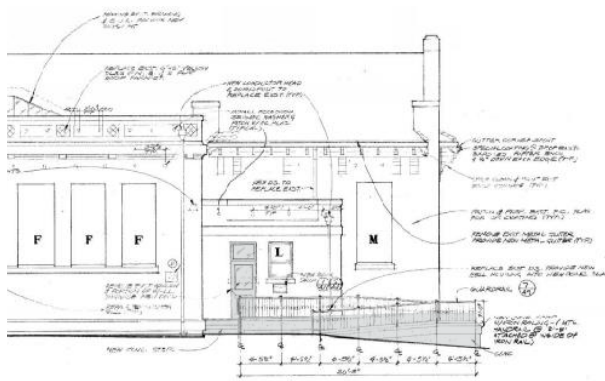
RAISED PARKING  
LEVEL (RED DASHED)

REMOVE DOOR (NOT  
ORIGINAL)

REMOVE  
ACCESSIBLE RAMP



1910



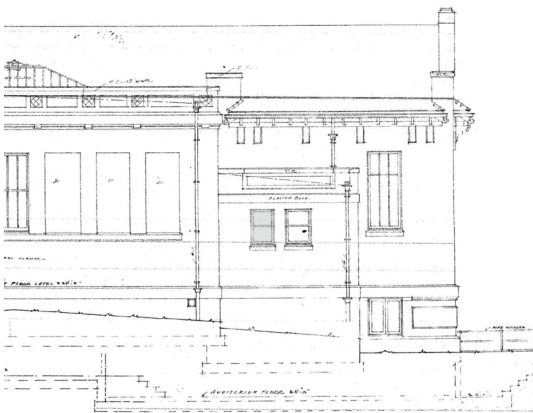
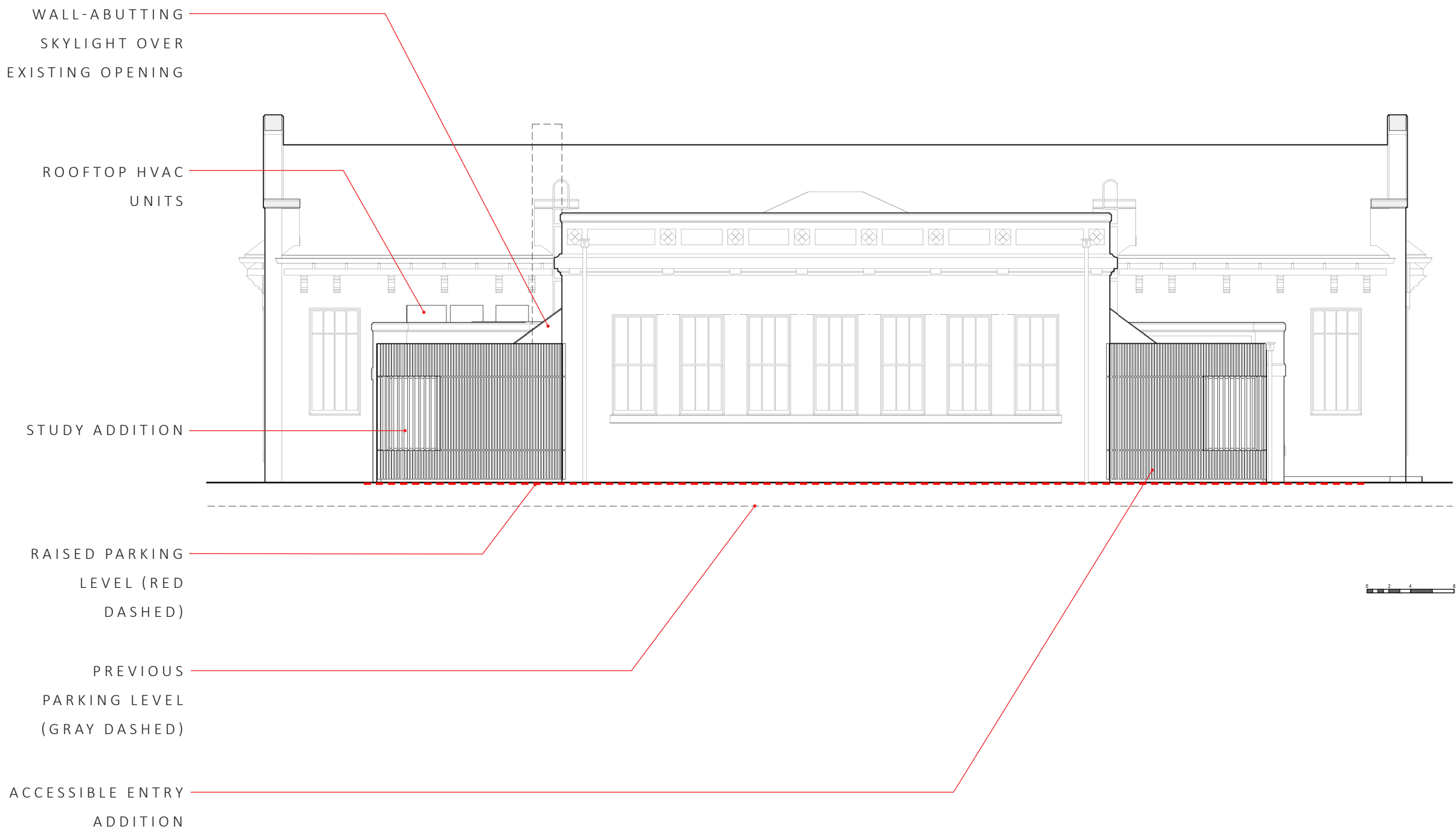
1986



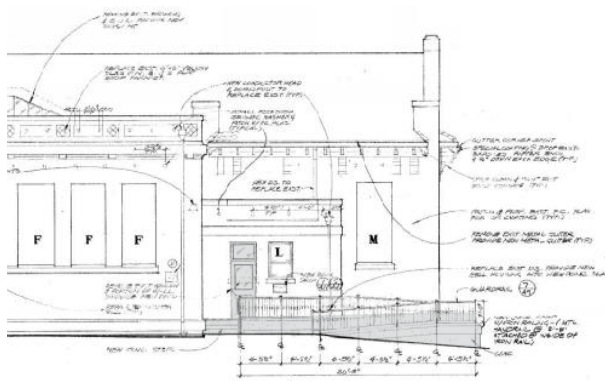
EXISTING

# BUILDING EXTERIOR MODIFICATIONS + ADDITIONS

## PROPOSED WEST ELEVATION



1910



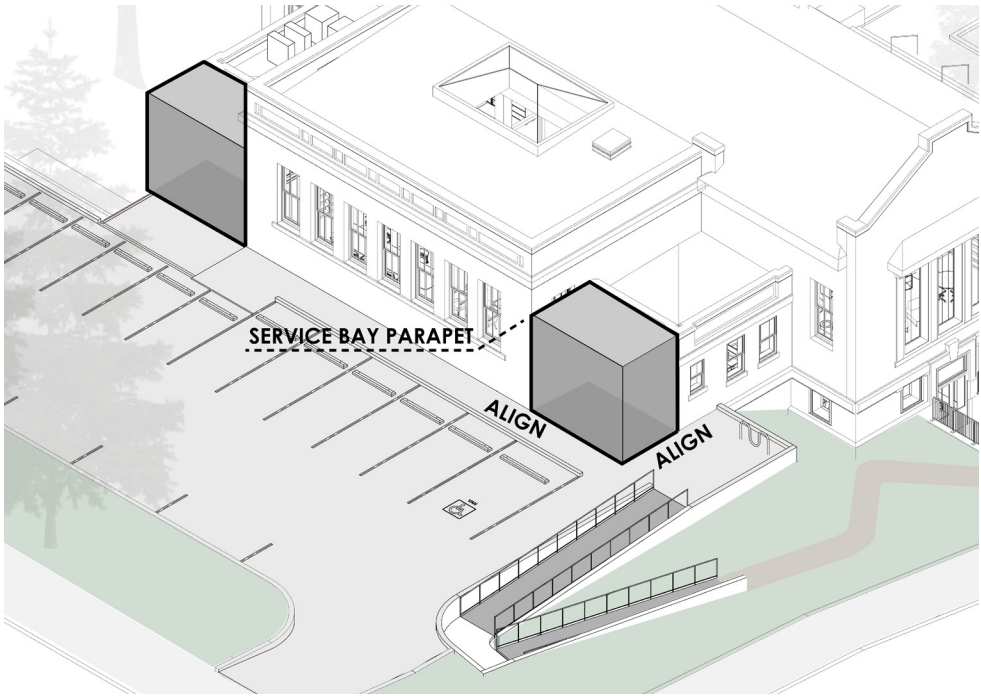
1986



EXISTING

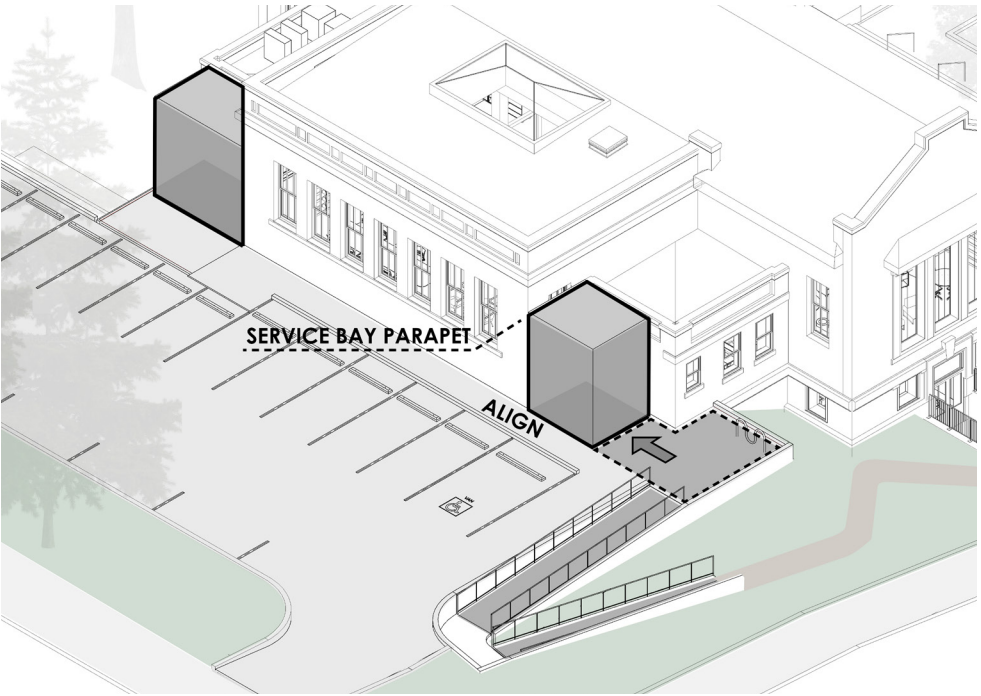
# BUILDING EXTERIOR MODIFICATIONS + ADDITIONS

FOOTPRINT AND MASSING



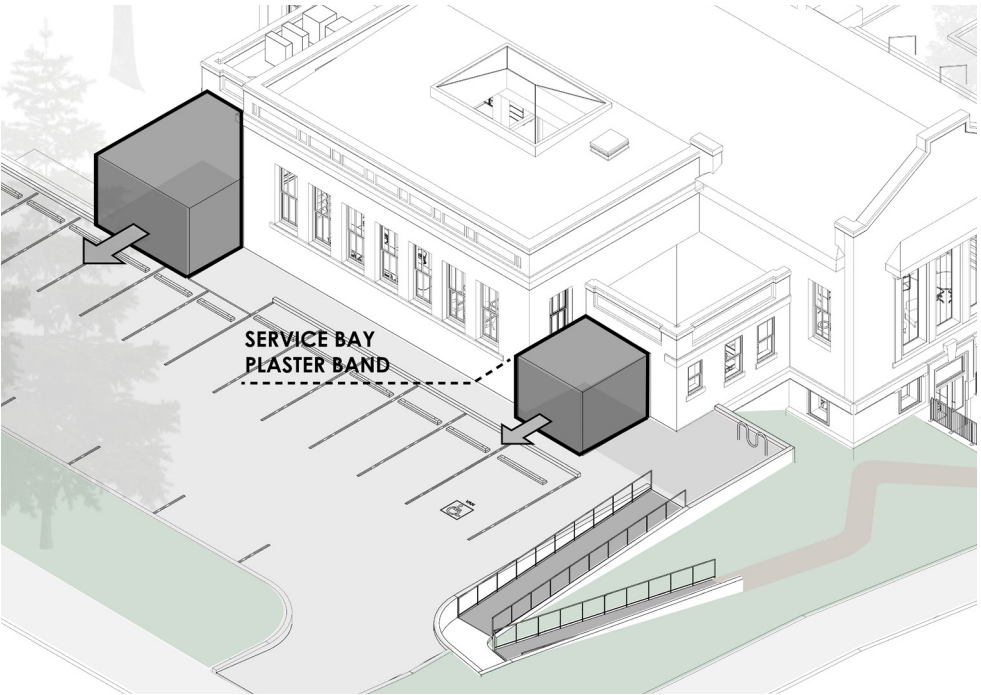
## 01 MAX VOLUME

- SET HEIGHT TO SERVICE BAY
- FOOTPRINT ALIGNED



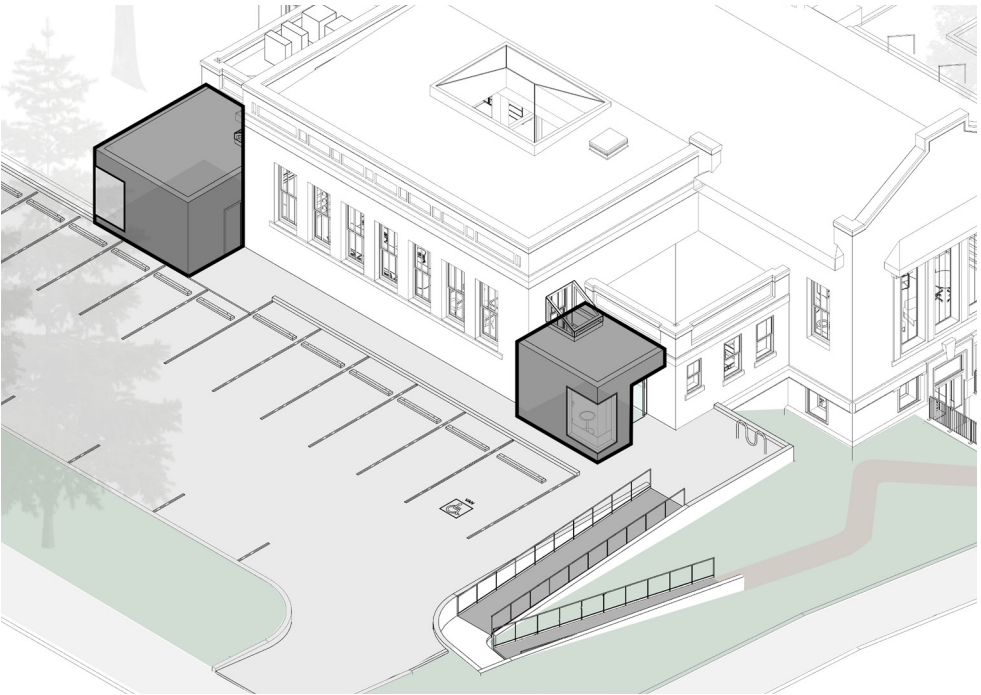
## 02 TERRACE SPACE

- EXPAND ENTRY TERRACE
- EXPOSE SERVICE BAY CORNER



## 03 HEIGHT LIMIT

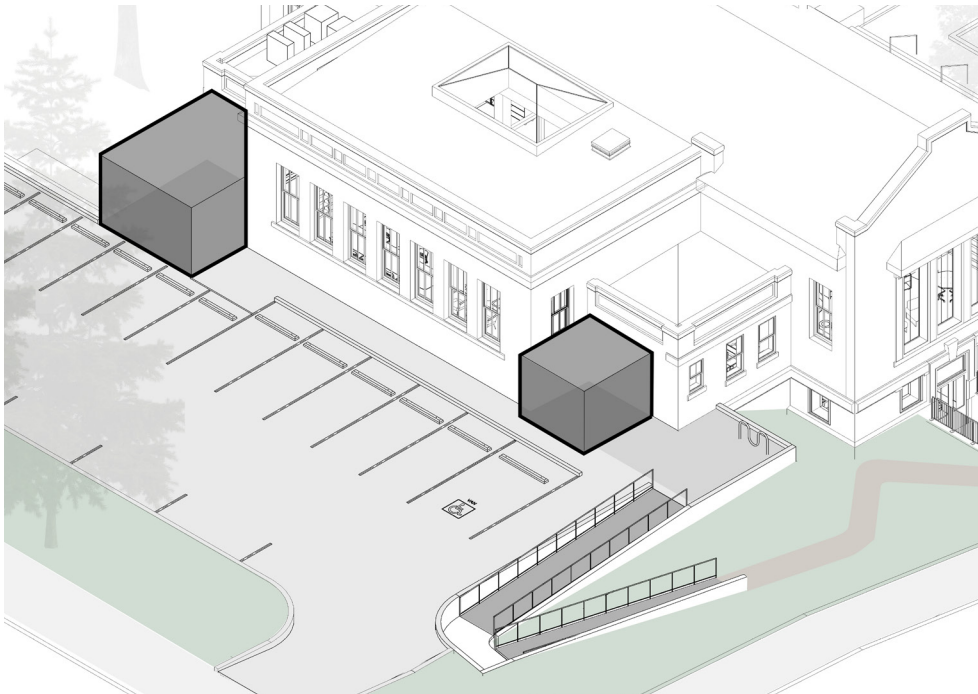
- ALIGN WITH PLASTER BAND
- EXPOSE EXISTING WINDOW



## 04 PROPOSED

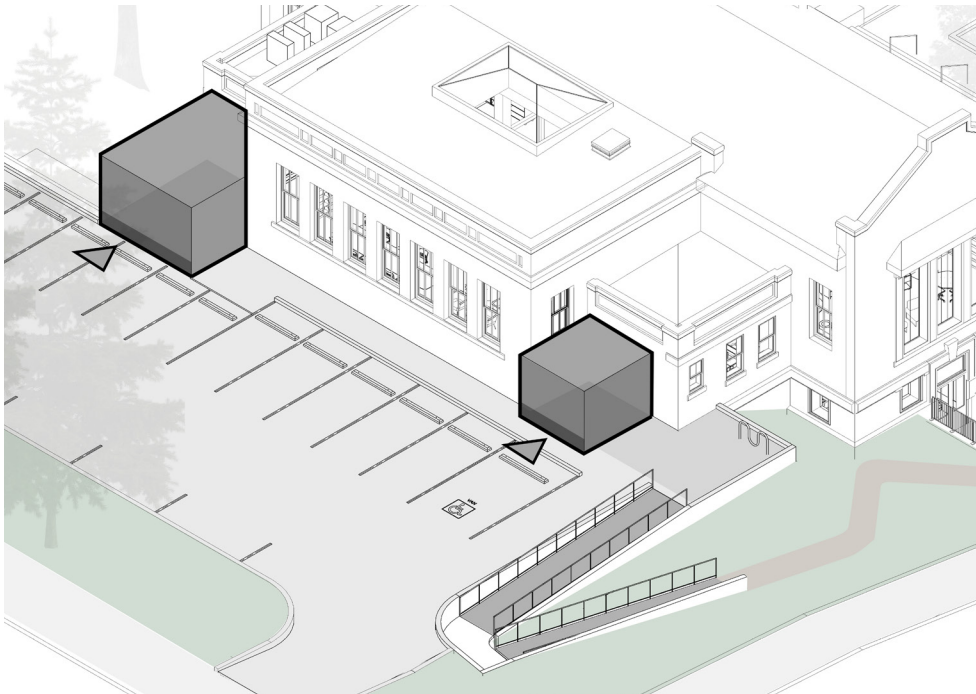
- INCREASE PROGRAM SPACE
- EXPRESS WEST WING CORNER

BUILDING EXTERIOR MODIFICATIONS + ADDITIONS  
SITE & ENTRY CONSIDERATIONS



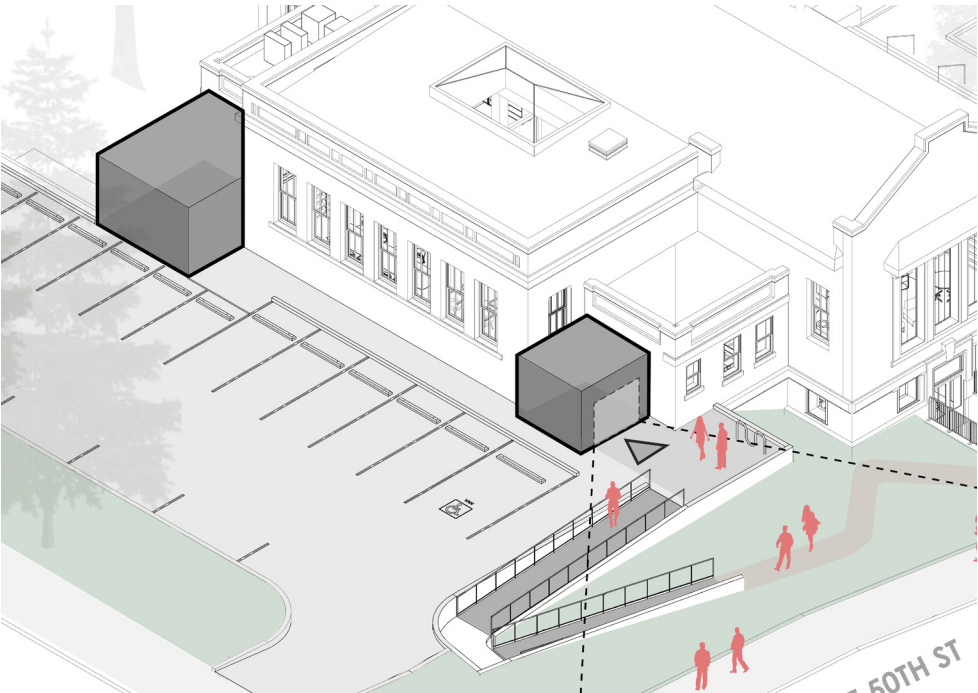
01  
BASE VOLUME

- MASSING DEFERS TO EXISTING BUILDING



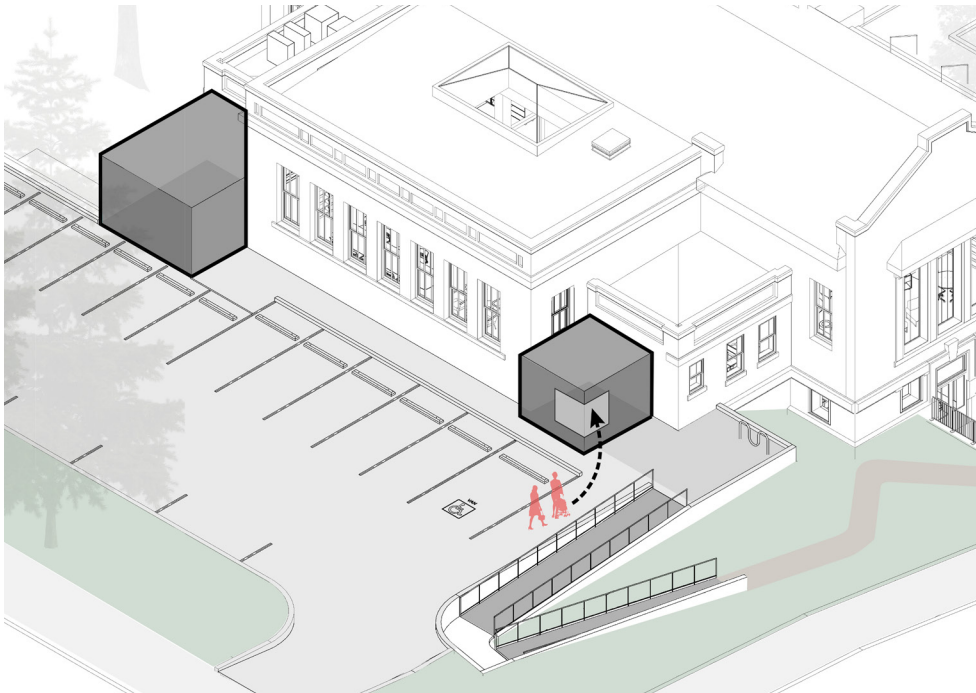
02  
PARKING BUFFER

- MATERIALS & VOLUME TO PROTECT FROM TRAFFIC



03  
SOUTH FACING

- OPEN TO SITE PATH
- ENTRY VISIBILITY TO STREET

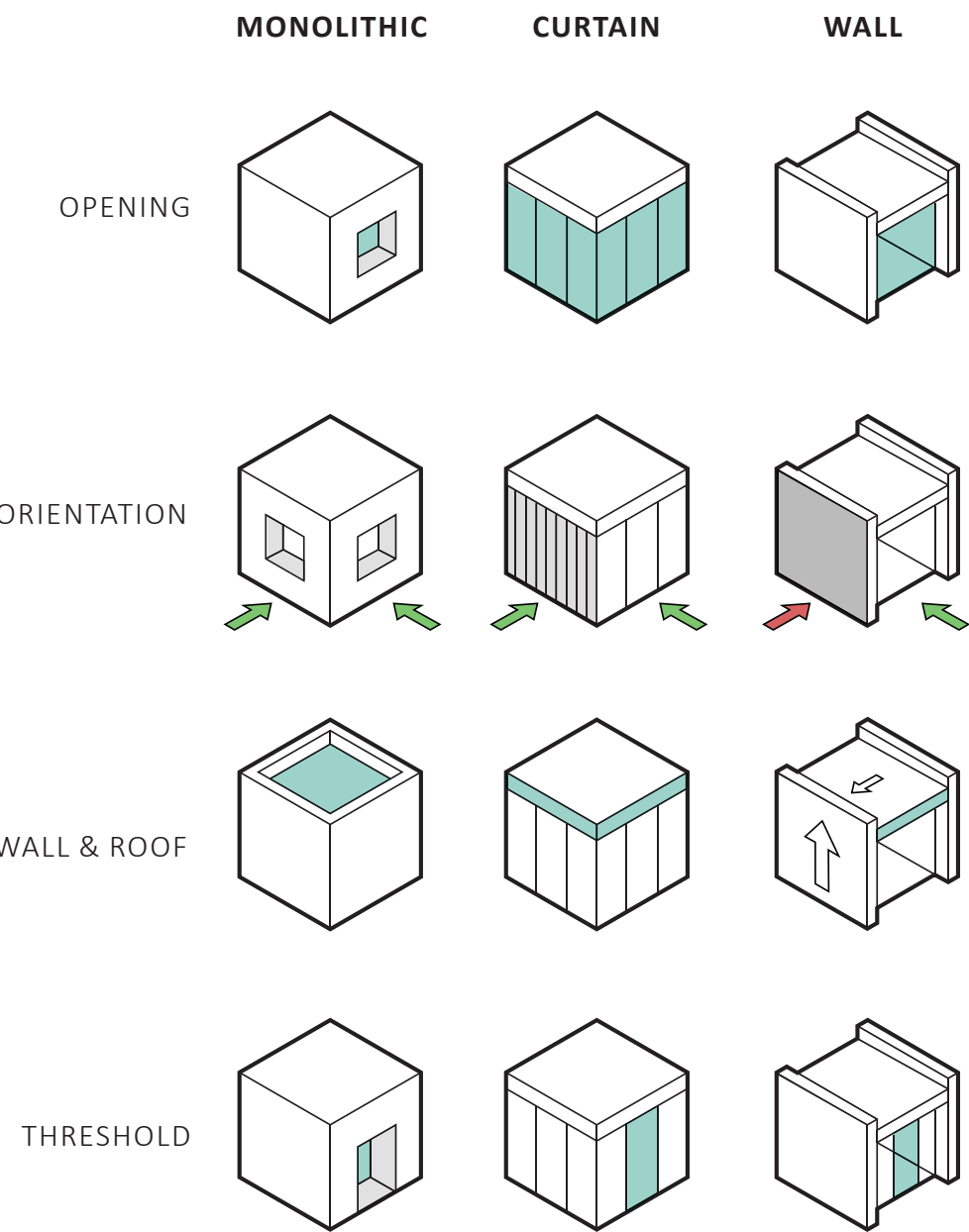


04  
ENTRY VISIBILITY

- OPEN SIGHTLINES TO PARKING
- EXPRESS TECTONIC APPROACH

# BUILDING EXTERIOR MODIFICATIONS + ADDITIONS

BUILDING LANGUAGE - EXISTING BUILDING & PROPOSED ADDITIONS



## EXISTING BUILDING LANGUAGE



OPENING



ORIENTATION

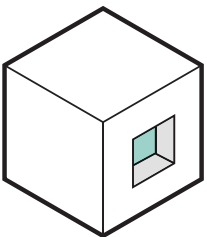
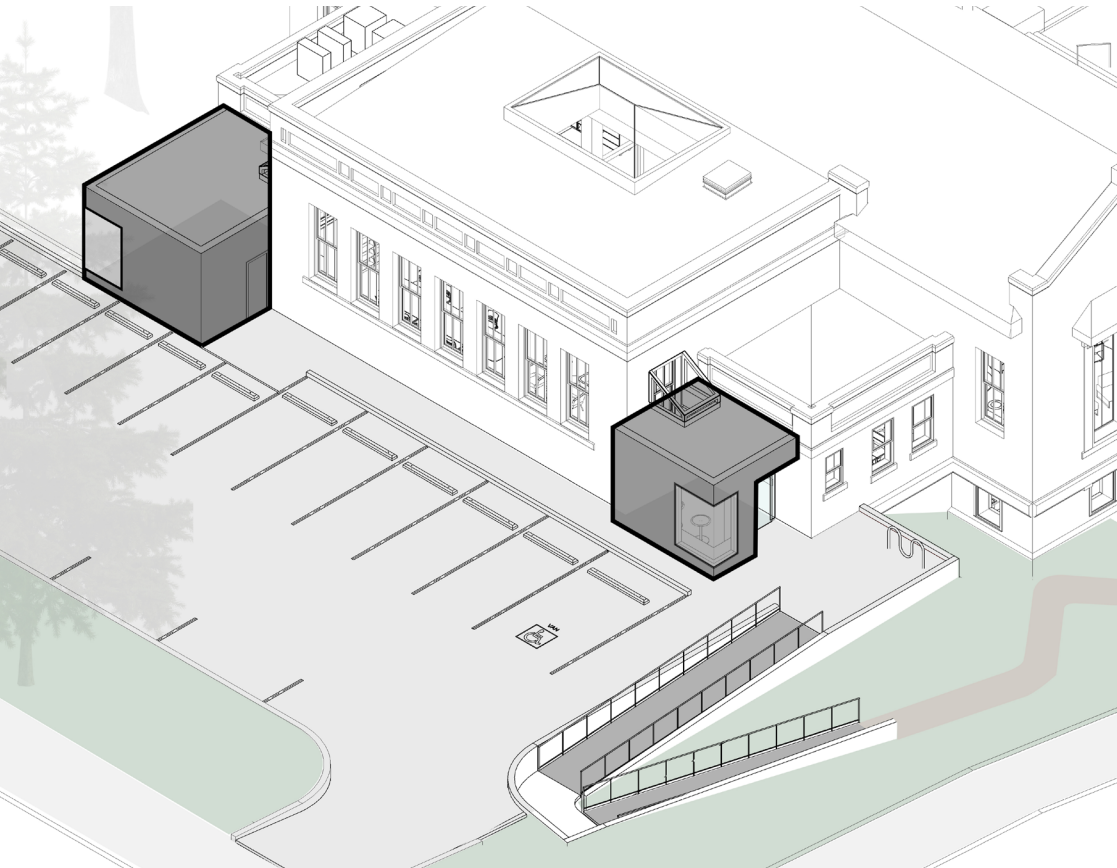


WALL & ROOF

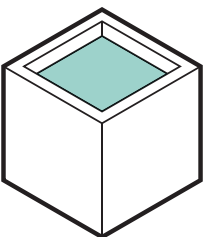


THRESHOLD

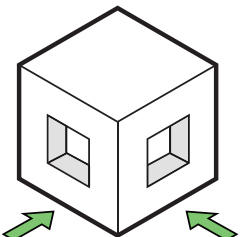
## PROPOSED - MONOLITHIC



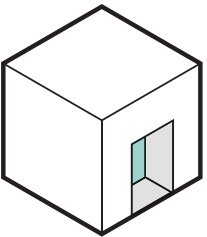
PUNCHED  
OPENINGS



PARAPET



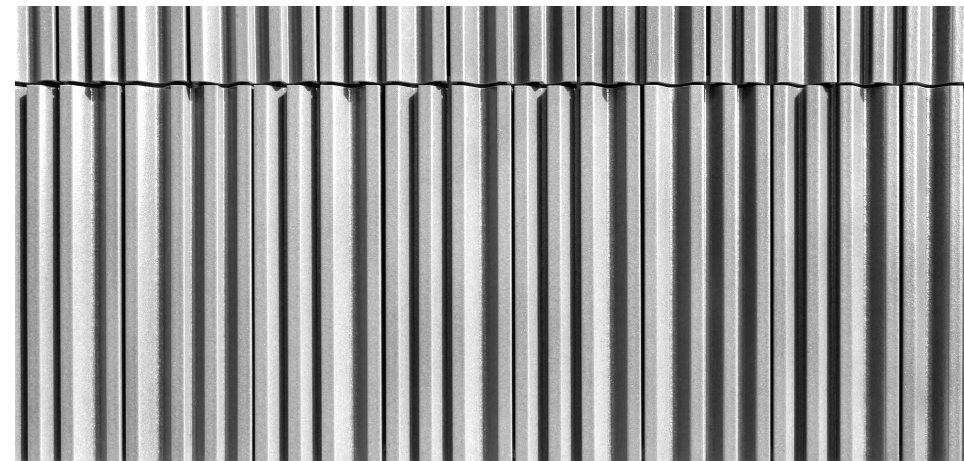
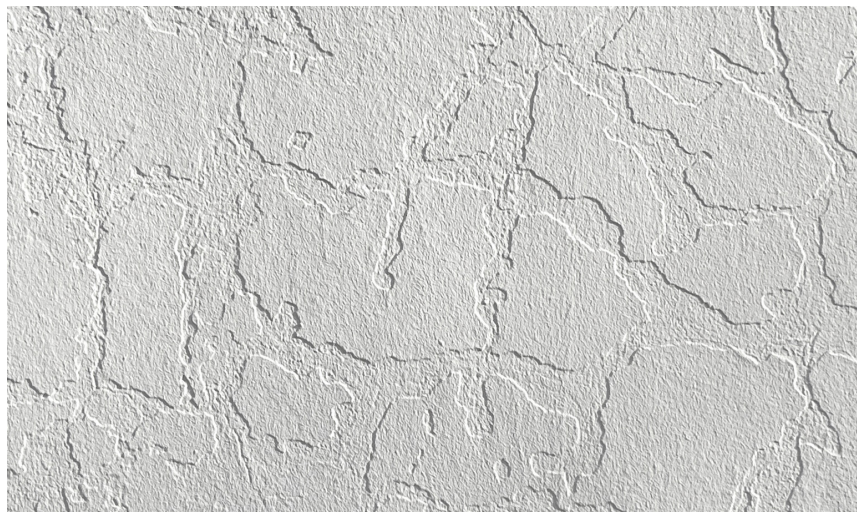
EQUAL  
FACING



DEEP  
THRESHOLD

BUILDING EXTERIOR MODIFICATIONS + ADDITIONS

EXISTING MATERIAL QUALITIES



MATERIALS

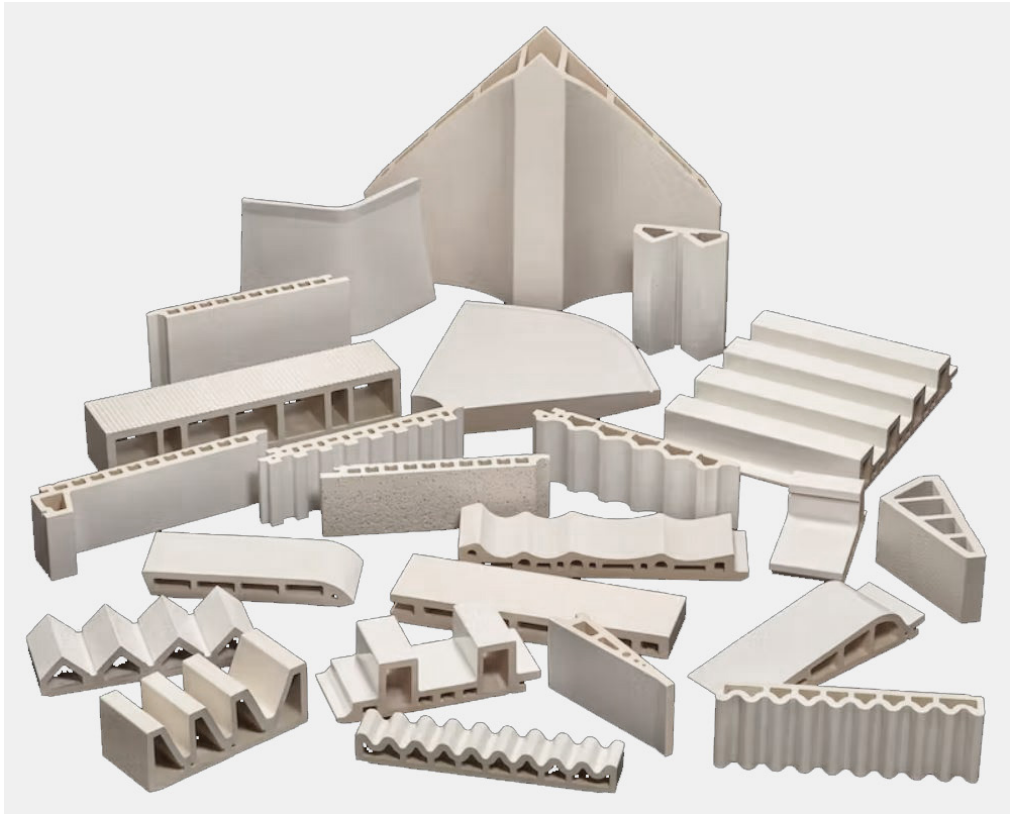
COMPATIBILITY + DIFFERENTIATION

The proposed design responds to the original building materials, which utilize unitized masonry in its structure and roofing. Its white stucco exterior and terra cotta detail contribute to a monolithic yet textural appearance. Both the material grain & perimeter windows lend to a vertical grain and unit proportion.

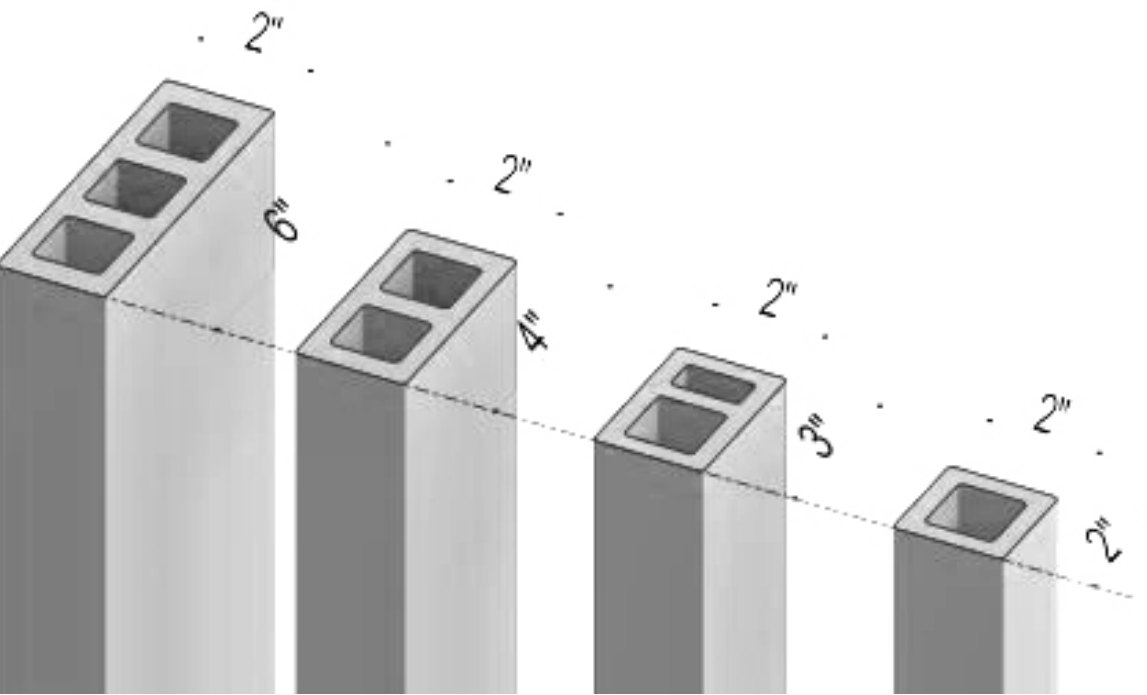
The project proposes the use of a white colored glazed terra cotta rainscreen system for cladding the building additions, following the original building's material philosophy, yet differentiating the additions through contemporary building technology.

BUILDING EXTERIOR MODIFICATIONS + ADDITIONS

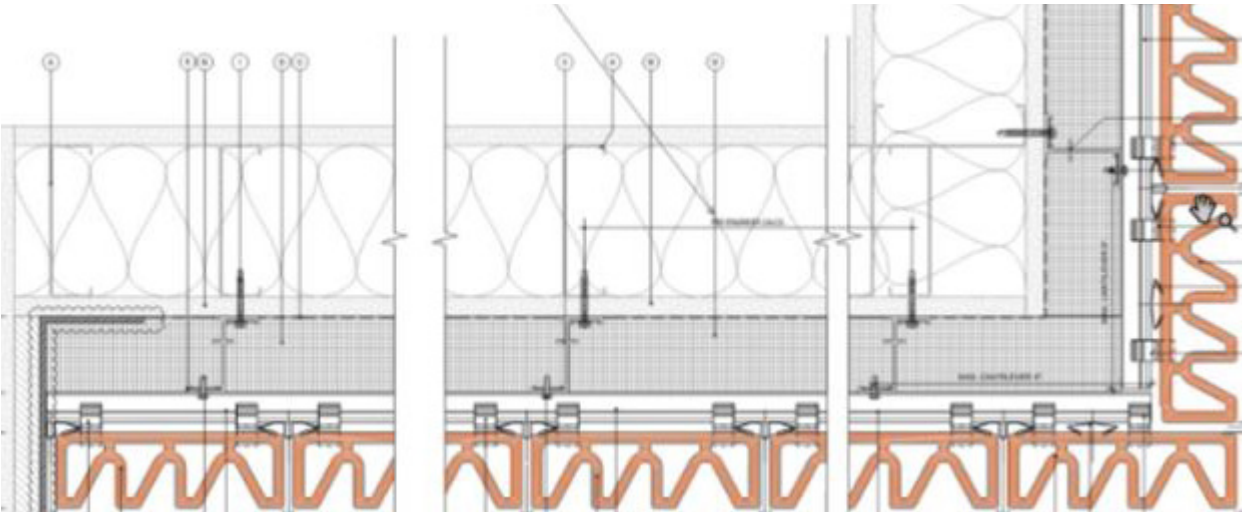
MATERIALS AND CLADDING SYSTEM



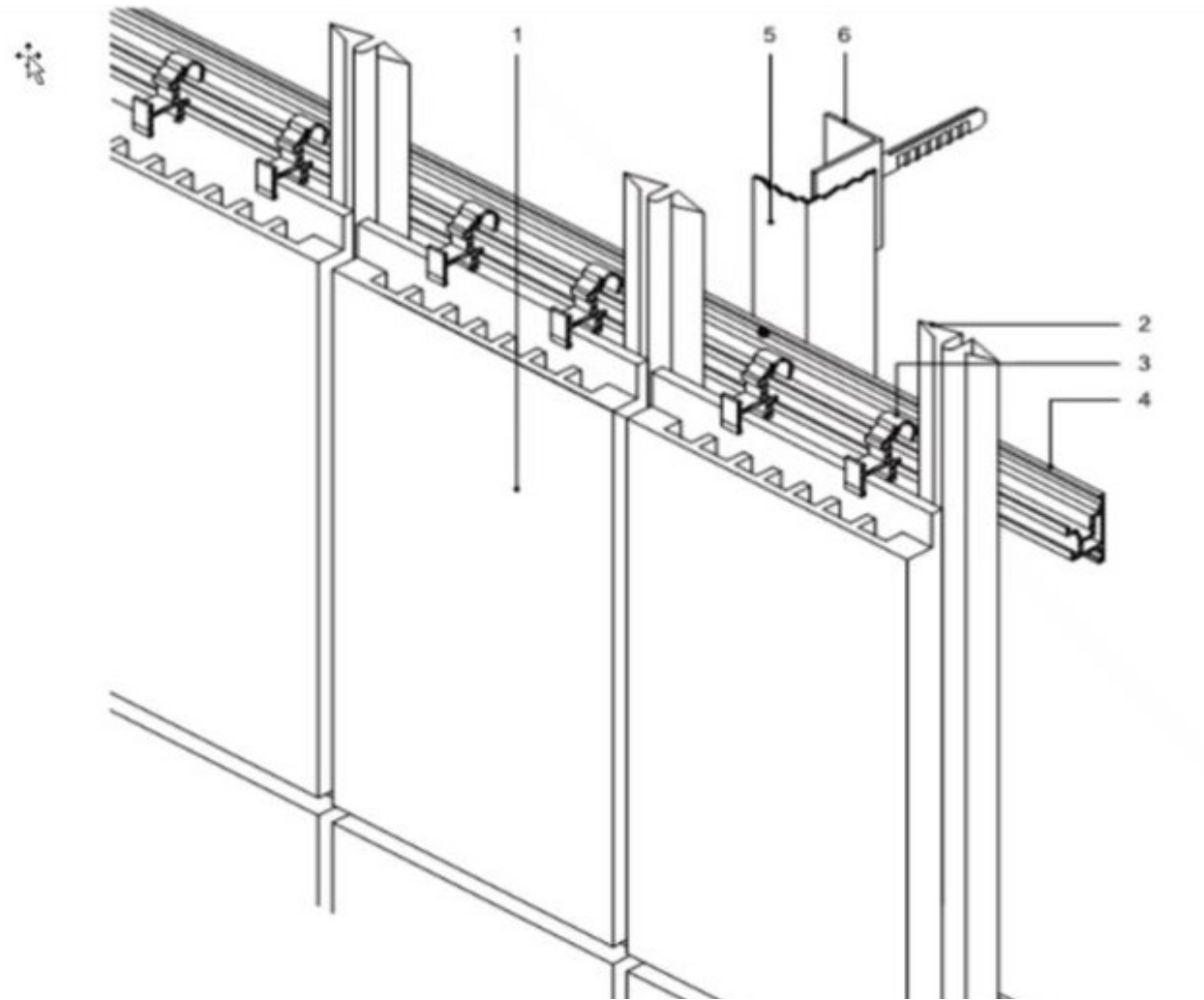
TERRA COTTA RAINSCREEN PROFILES



TERRA COTTA SUNSCREEN BAGUETTES



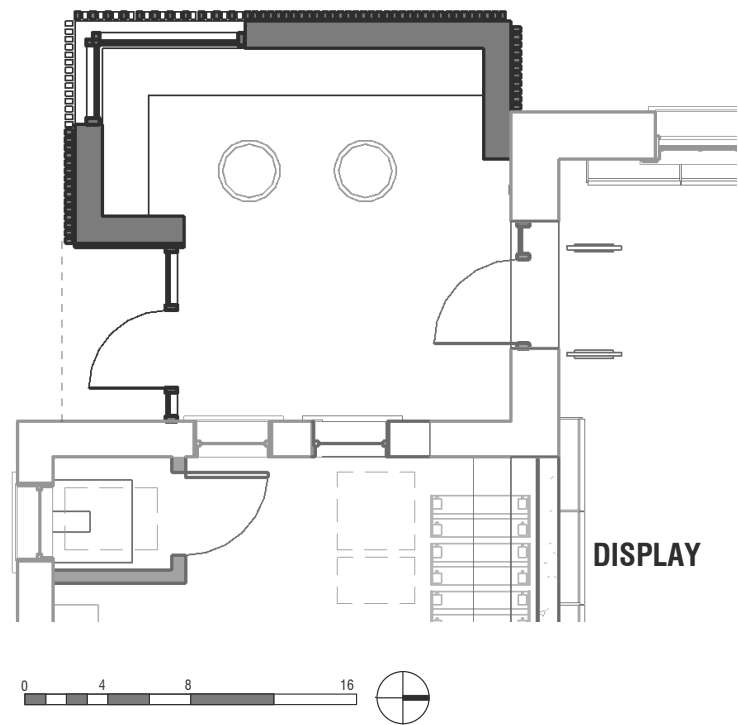
TYPICAL WALL SECTION



TYPICAL ASSEMBLY

BUILDING EXTERIOR MODIFICATIONS + ADDITIONS

ADDITIONS DEVELOPMENT - PERSPECTIVES



SOUTH ADDITION

Alignment & Proportion

The proposed addition openings align with the adjacent service bay plaster band that delineates its roof plane, as well as its lower window sills. A roughly 1-2-1 proportion between roof, window, and foundation datums, which is shared with the adjacent west wing reading room.



SOUTH ELEVATION



WEST ELEVATION



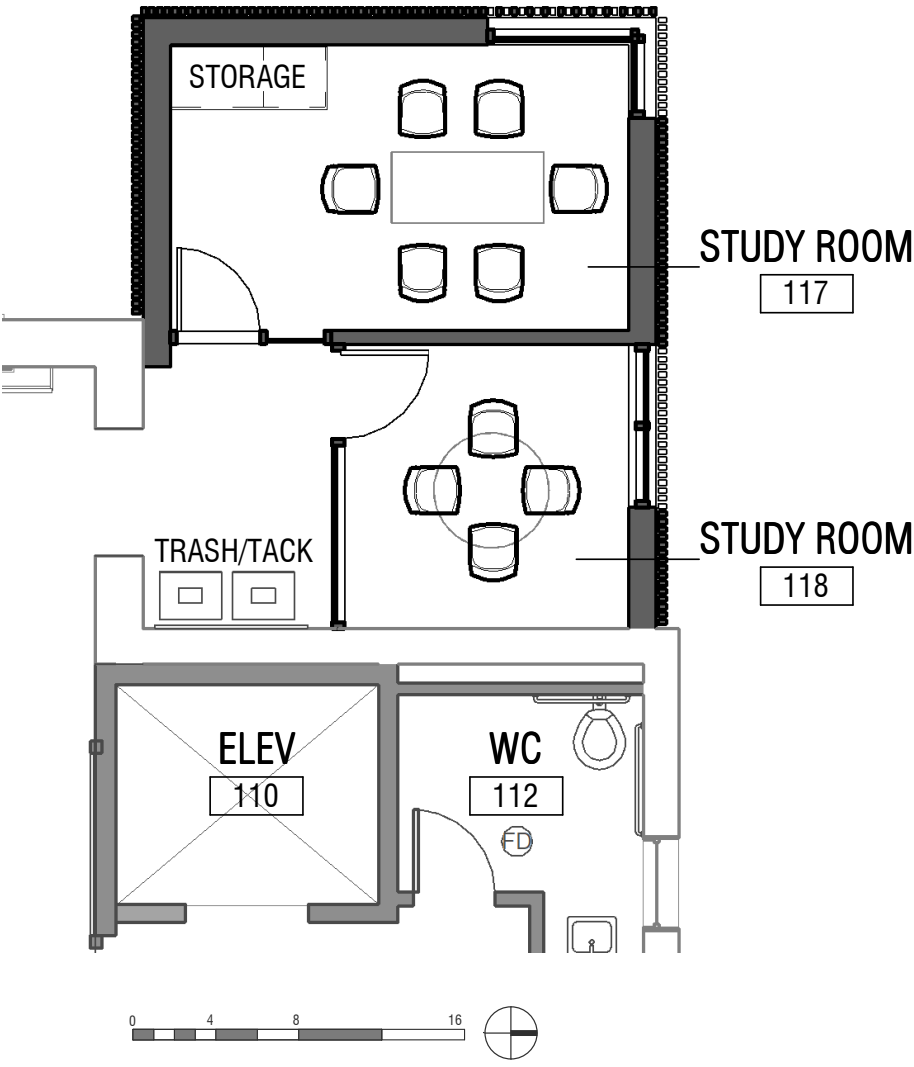
PARKING APPROACH



WALKWAY APPROACH

# BUILDING EXTERIOR MODIFICATIONS + ADDITIONS

ADDITIONS DEVELOPMENT - PERSPECTIVES



## NORTH ADDITION

### Roof Elements

Outdoors units for the new HVAC system are proposed to be located on the north service bay roof. The elevator overrun aligns with the parapet. These elements will not be visible from the parking lot, though the outdoor units will be visible from the higher elevation of 9th Avenue.

A solar panel array is proposed to be located on the west wing roof. The incidence angle will be set such that the panels will be fully concealed by the parapet when viewed from 9th Avenue.



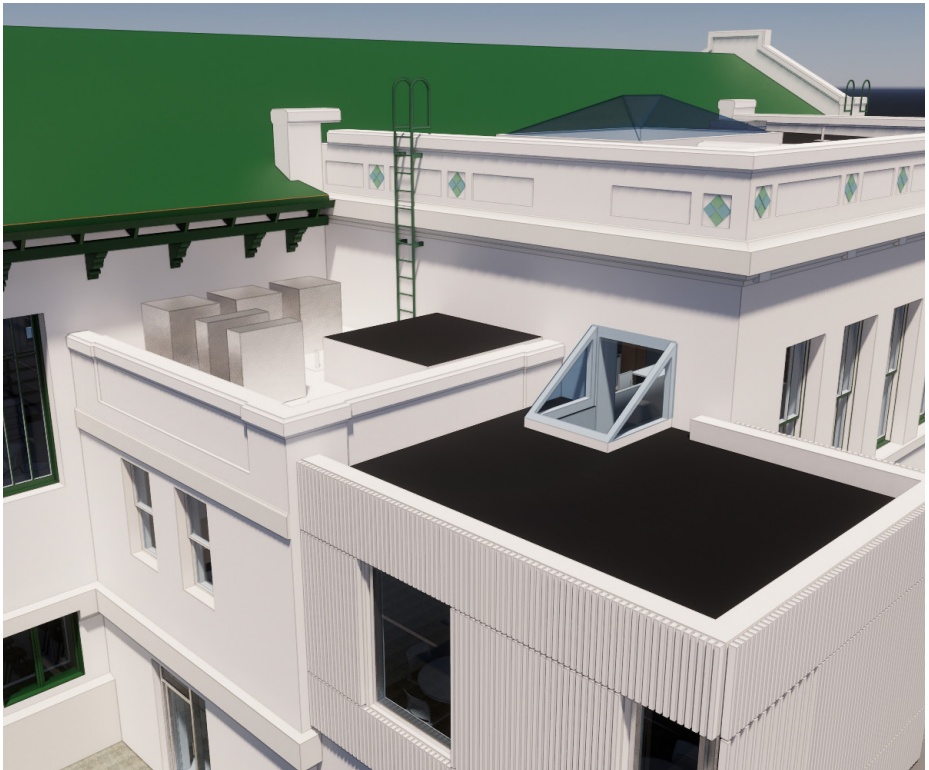
PARKING VIEW



WEST ELEVATION



NORTH FACADE



ROOFTOP ELEMENTS

## 1. PROJECT OBJECTIVES

## 2. BUILDING HISTORY + EXISTING CONDITIONS

## 3. DESIGN PROPOSALS

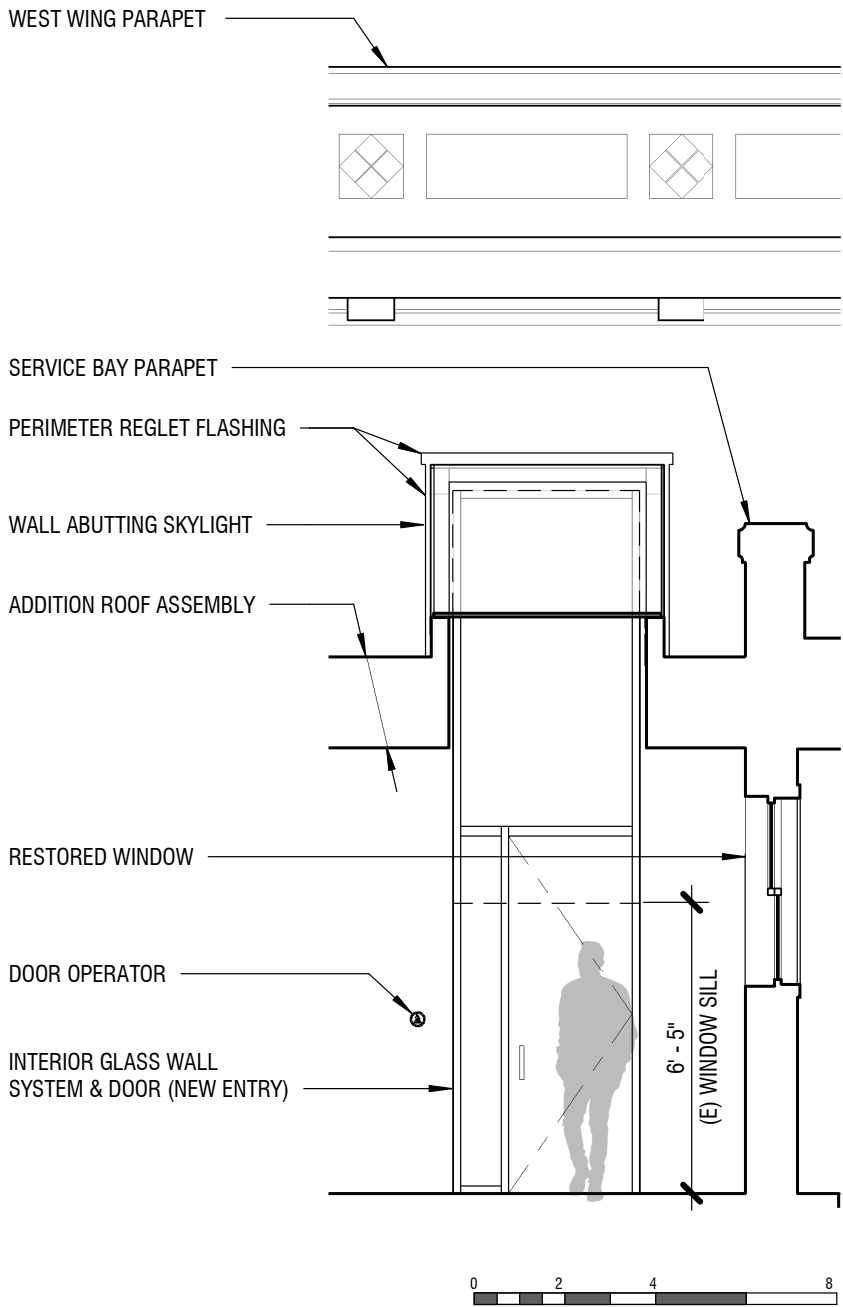
- SITE ACCESSIBILITY IMPROVEMENTS
- BUILDING EXTERIOR MODIFICATIONS + ADDITIONS
- \* • INTERIOR MODIFICATIONS

BUILDING EXTERIOR MODIFICATIONS + ADDITIONS

MODIFIED ENTRY - ACCESSIBLE ENTRY ADDITION



EXISTING SOUTHWEST ENTRY & WINDOW



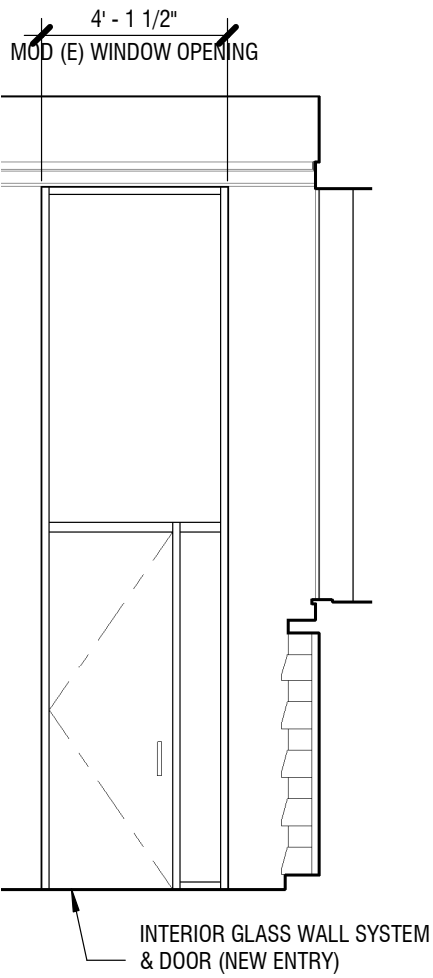
PROPOSED ENTRY SKYLIGHT ELEVATION



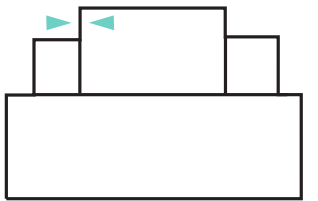
PROPOSED ENTRY SKYLIGHT



EXISTING WINDOW INTERIOR



PROPOSED INTERIOR



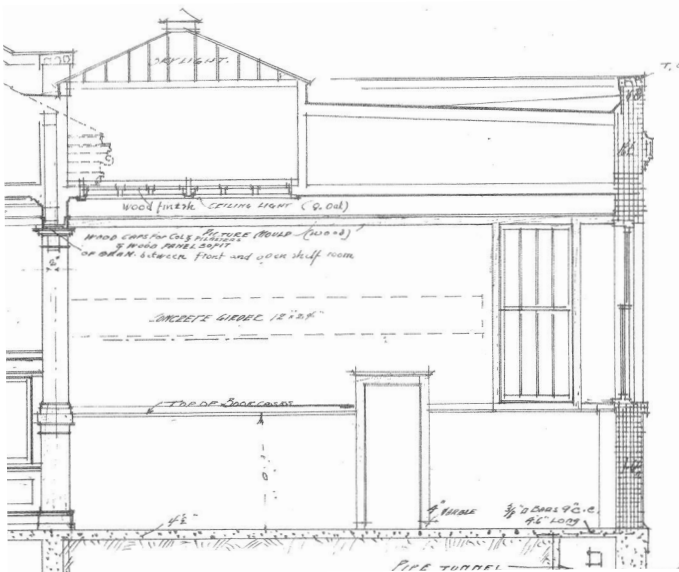
INTERIOR MODIFICATIONS  
WEST WING - INTERIOR ELEVATIONS



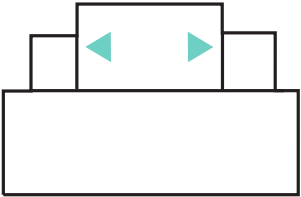
WEST WING NORTH - ORIGINAL WORKROOM OPENING



WEST WING SOUTH - EXISTING OPENING (1986)



WEST WING SOUTH - 1910 OPENING

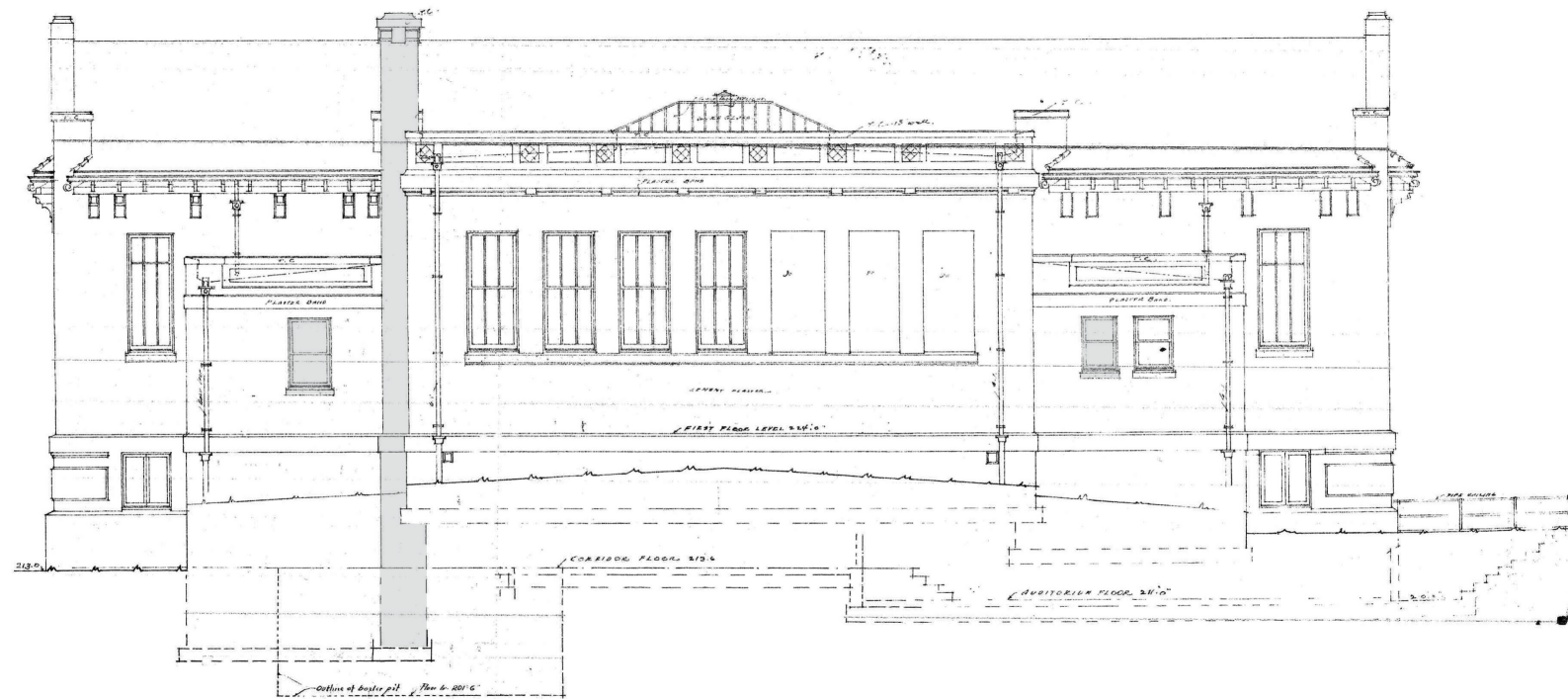


# APPENDIX

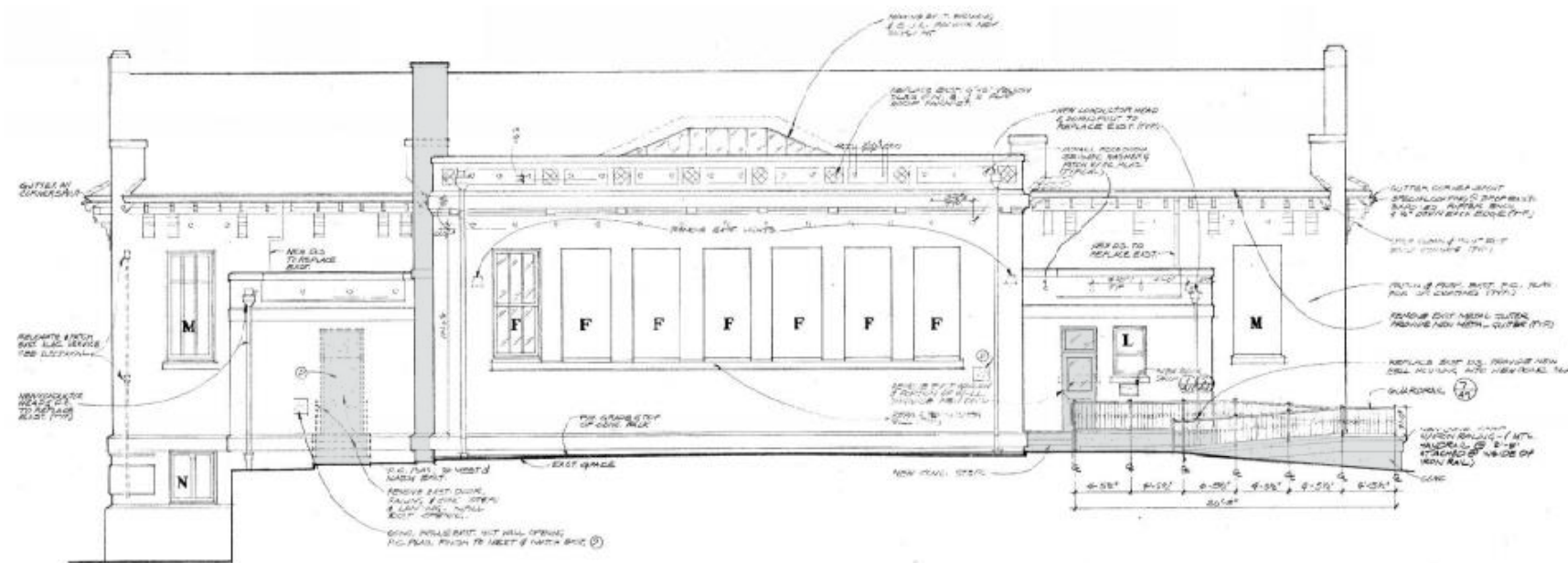
## REFERENCE SLIDES

LANDMARKS BRIEFING MEETING  
APRIL 14, 2023

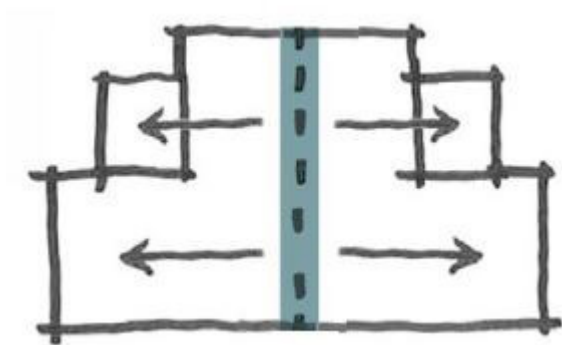
## WEST ELEVATION - CHANGES OVER TIME



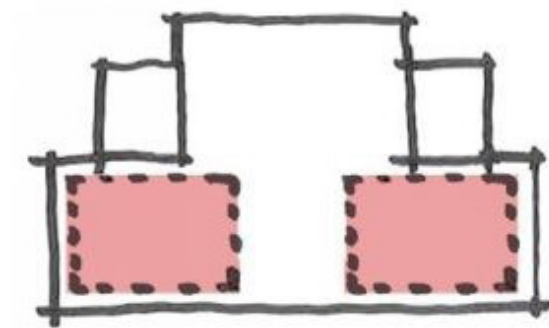
WEST ELEVATION - 1910



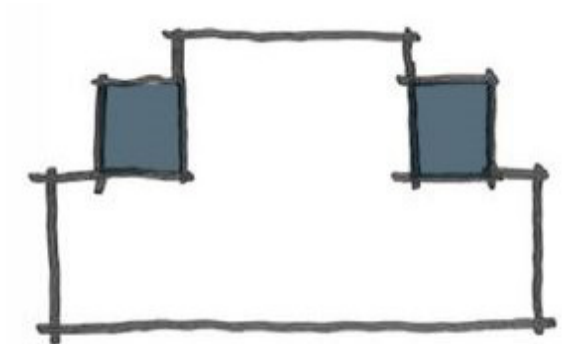
WEST ELEVATION - 1986 RENOVATION



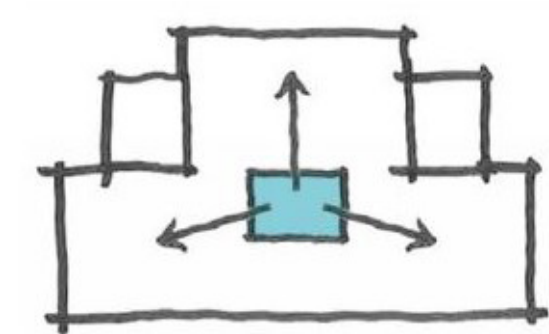
ENTRY AXIS



SYMMETRICAL READING



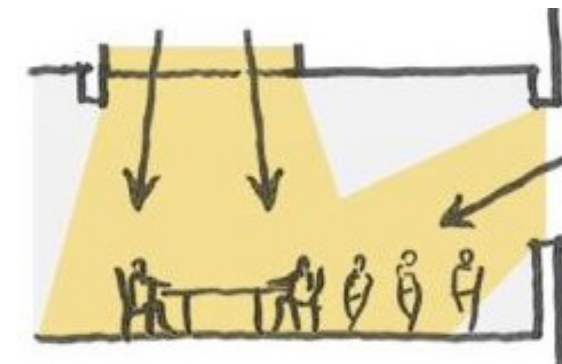
SERVICE WINGS



CENTRAL SERVICE DESK



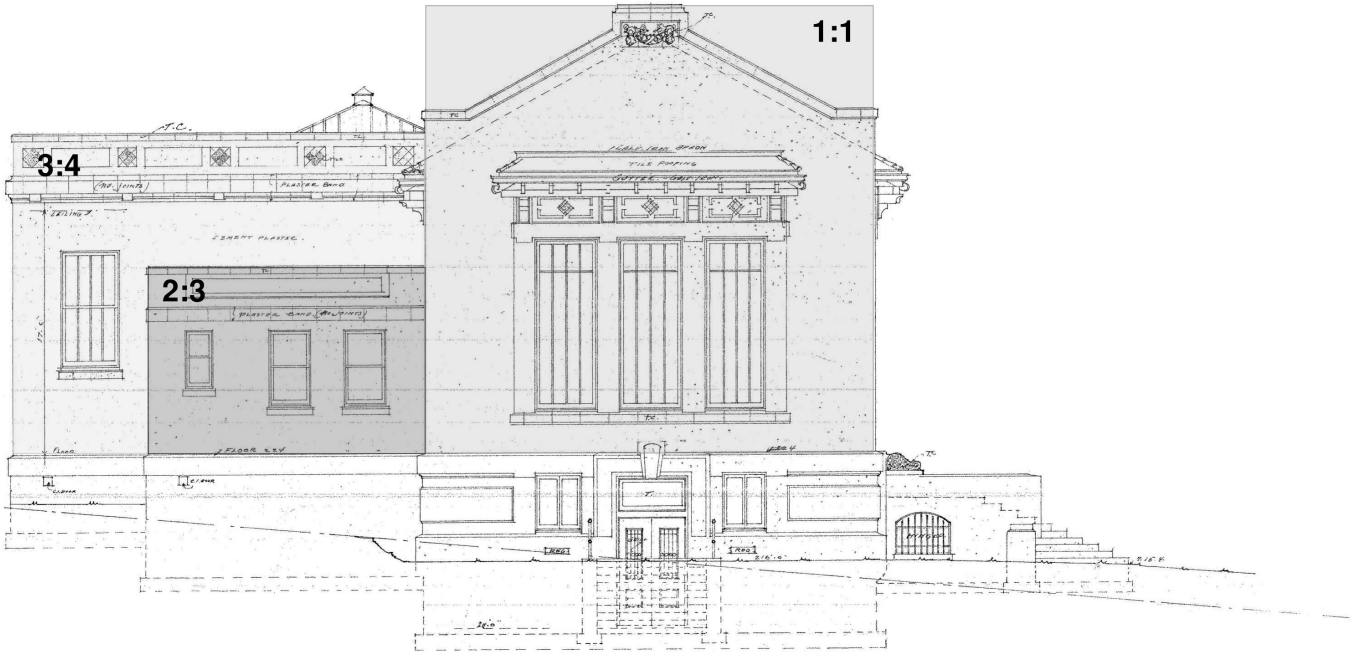
PERIMETER SHELVES



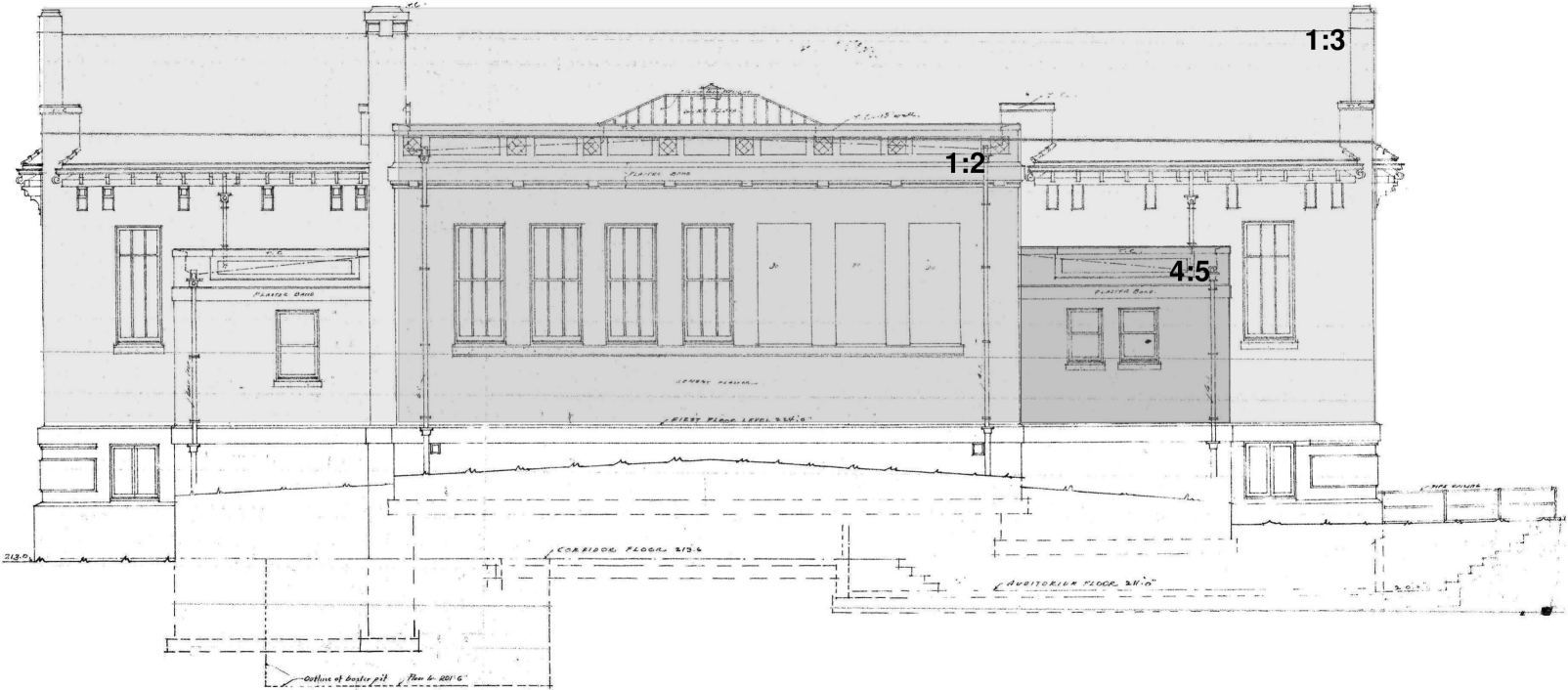
PERIMETER + CENTRAL  
DAYLIGHT



DESIGN PRINCIPLES  
EXISTING BUILDING PROPORTIONS



SOUTH ELEVATION



WEST ELEVATION