

Kanti C. Ramamurti, Application and Certification of Special Valuation on Improvements to Historic Property. Stewart House, 10455 Maplewood PL SW, Seattle, WA 98146

Detailed Description of Rehabilitation Work.

December 1, 2022 to July 10, 2024. Architect design and sourcing of historically accurate replacement windows; project design and construction administration; Mapes panels for windows; City of Seattle permitting and permit fees; paint analysis of original color of windows. Marvin Anderson Architects PLLC.

August 17, 2023. Restore original arch steel windows in the living room, restore the original remaining steel windows in the sewing room, corner upstairs bedroom bath and closet. Chosen Wood Window Maintenance, Inc.

November 24, 2023-July 25, 2024. Replace 1970s wood windows with aluminum windows that meet energy standards and match the original design and exterior colors of the original historic windows from 1931. Windows, Doors and More (supplier of the aluminum windows); Dakasi PMC (preparation and installation work).

July 19, 2024-September 7, 2024. Stucco repair, Paint Main House after new window installation and refurbish/paint iron balconies. Dakasi PMC.

BEFORE
REHABILITATION
PHOTOGRAPHS

APPLICATION OF KANTI C. RAMAMURTI.
STEWART HOUSE, 10455 MAPLEWOOD PL SW
SEATTLE, WA 98146



Fig. 1 – East facade, center part, view northwest showing main entry.



Fig. 2 – East facade, center part, view west showing main entry.

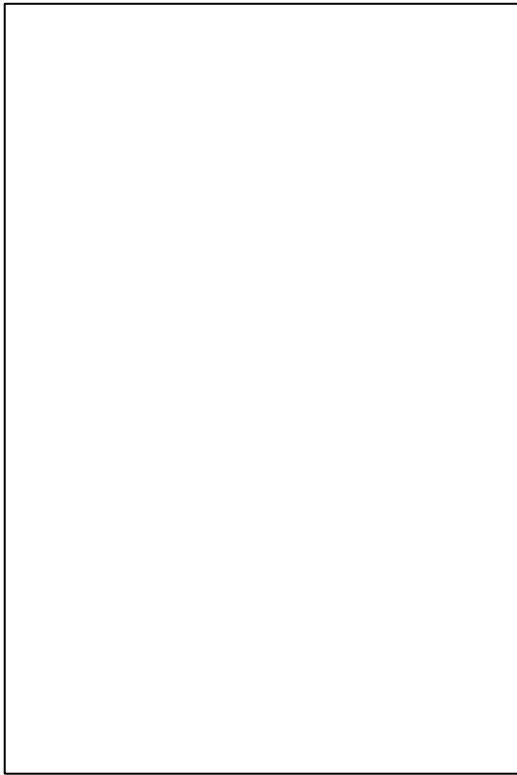


Fig. 3 - East facade, south, part showing porch between house and garage.

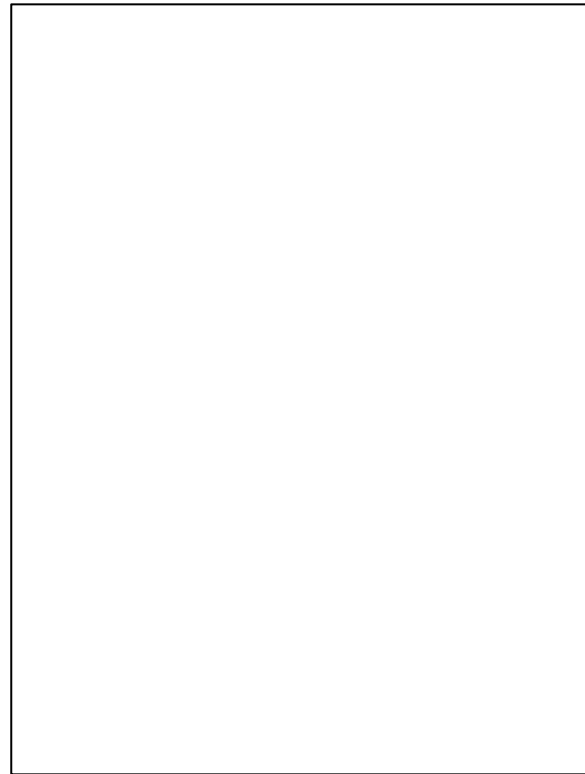


Fig. 5 – East facade, detail of window under porch (left)

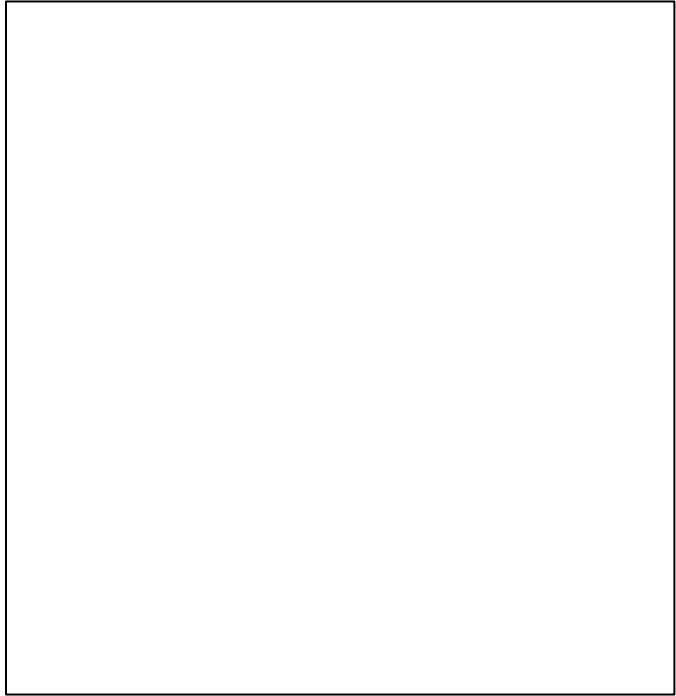
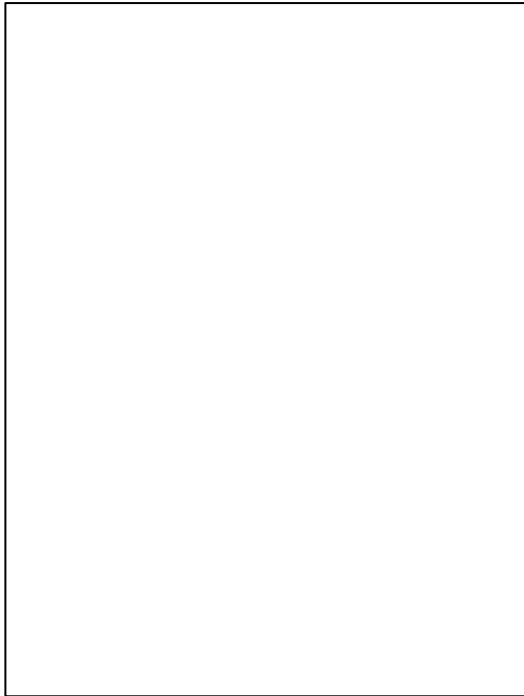


Fig. 6 – North facade, view southwest.



Fig. 7 – West facade, view east, from lower back yard. Garage apartments visible at right.



Fig. 8 – West facade, view east.



Fig. 9 – West facade, view south across rear patio.



Fig. 10 – West facade, upper part, view northeast from rear patio.



Fig. 11 – West and south facades, view northeast.



Fig. 12 – West facade, south part, detail of first floor wrought iron balcony.

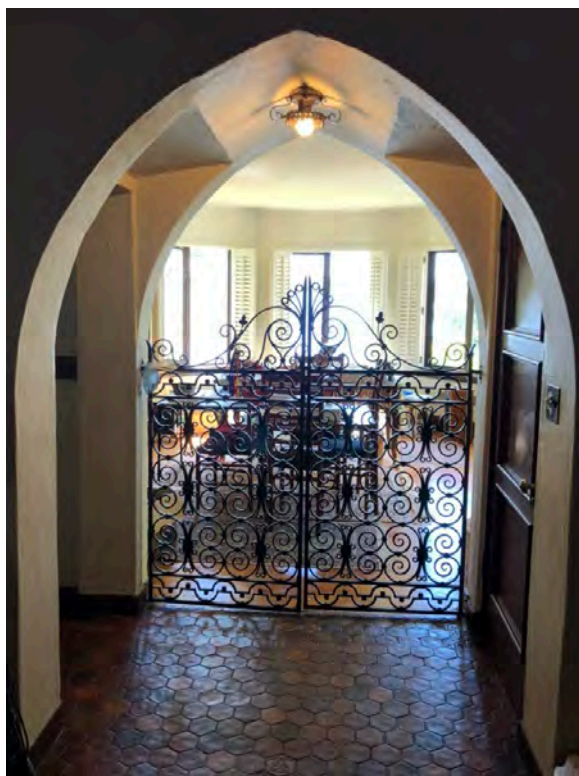


Fig. 13 – Interior, stair hall, view west, showing wrought iron gate at sun room threshold. Passage at left leads to primary bedroom; door at right opens to basement staircase.



Fig. 14 – Interior, sun room, view west.



Fig. 15 – Interior, stair hall, view northwest to living room.



Fig. 16 – Interior, living room, view northwest. Patio visible outside windows on left.







Fig. 17 – Interior, living room, view northeast. Breakfast room visible through arched doorway.



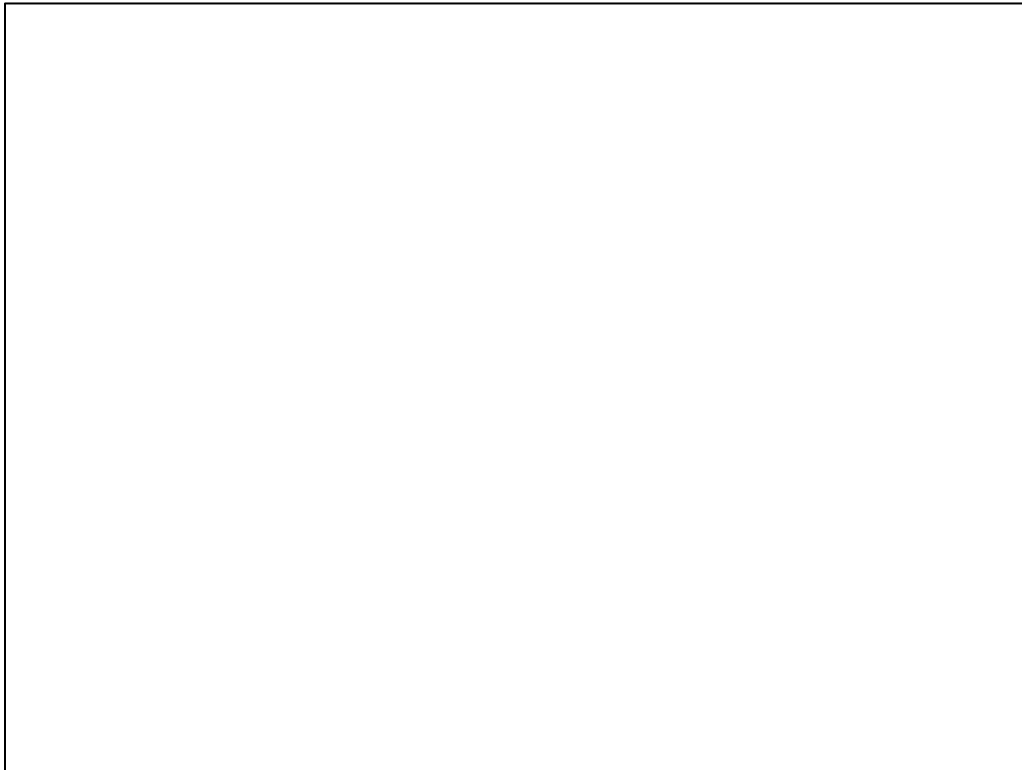


Fig. 34 – Interior, dining room, view south into entry hall.



Fig. 18 – Interior, primary bedroom, view south.



Fig. 19 – Interior, second floor, south bedroom, view southwest.



Fig. 20 – Interior, second floor, west bedroom, view west.



Fig. 21 – Interior, second floor, west bedroom bathroom, view southwest.



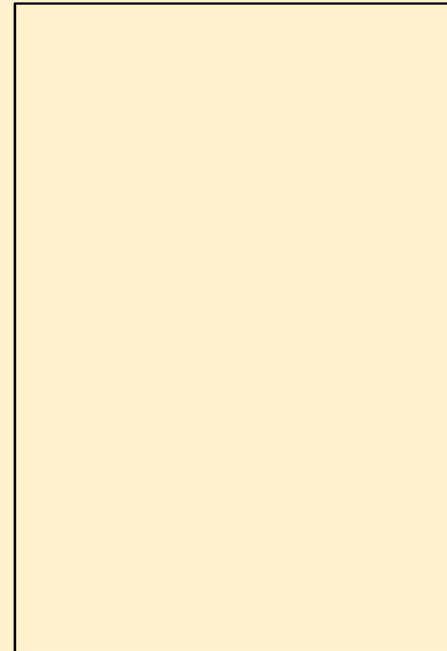
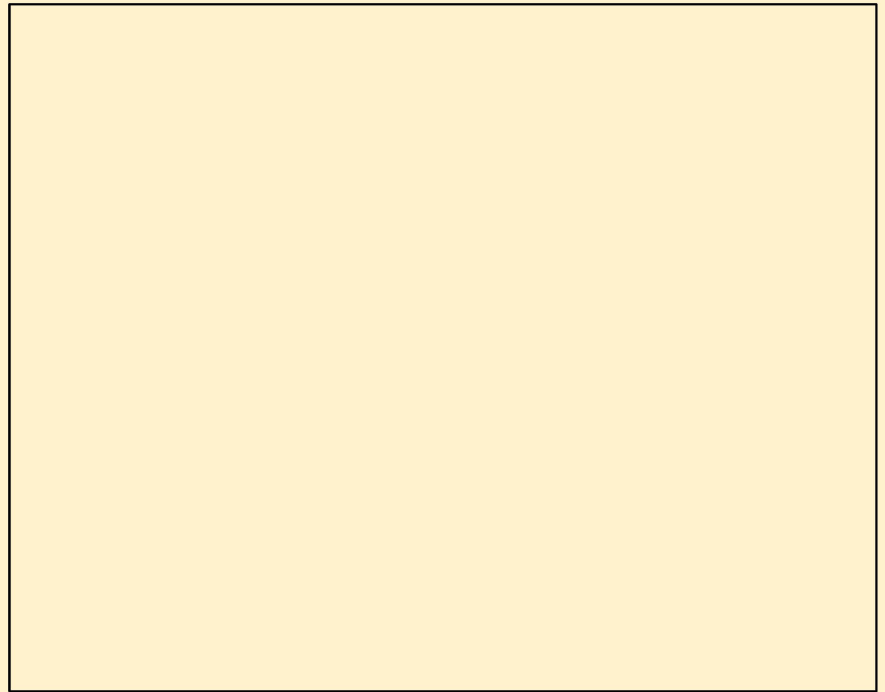
Fig. 22 – Interior, second floor, multipurpose room, view north.



AFTER REHABILITATION
PHOTOGRAPHS ALONG WITH
HISTORIC PHOTOGRAPHS TO
SHOW ORIGINAL DESIGN.

APPLICATION OF KANTI C. RAMAMURTI.
STEWART HOUSE, 10455 MAPLEWOOD PL
SW SEATTLE, WA 98146

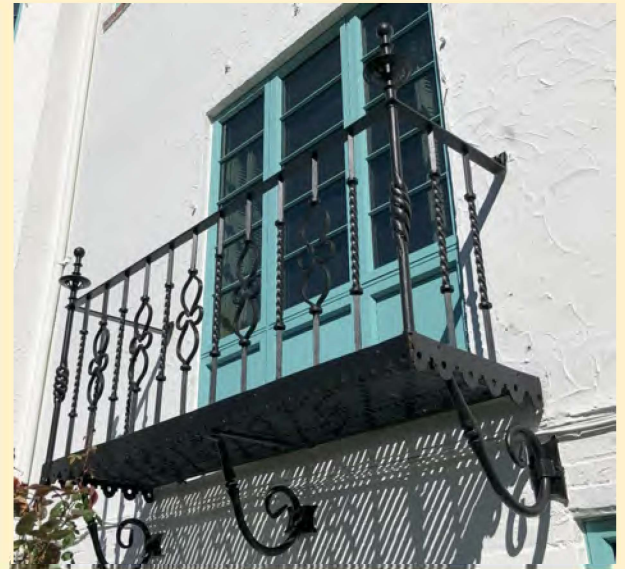




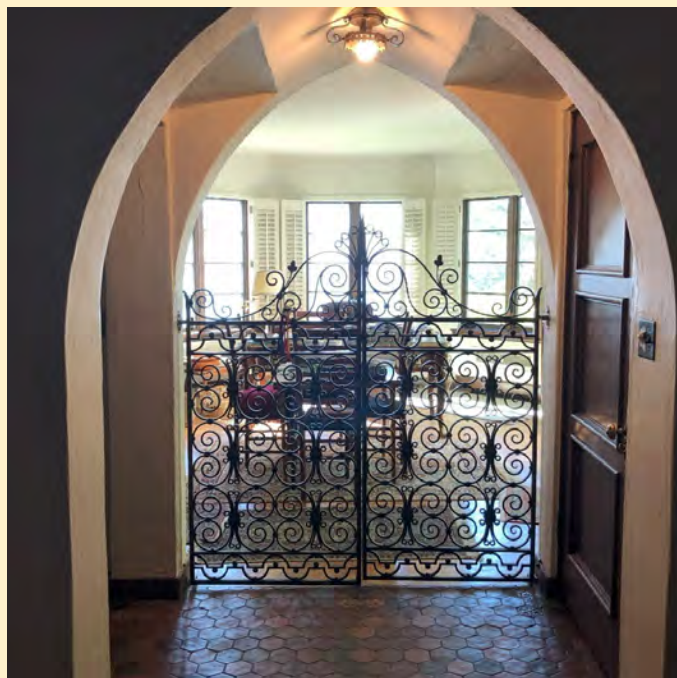


1931





Sun Room









Breakfast
Room

Main Bedroom, first floor





Second floor
bedroom
and hallway

Basement den



Second Floor Unfinished bedrooms

