

Continental Hotel
315 Seneca Street

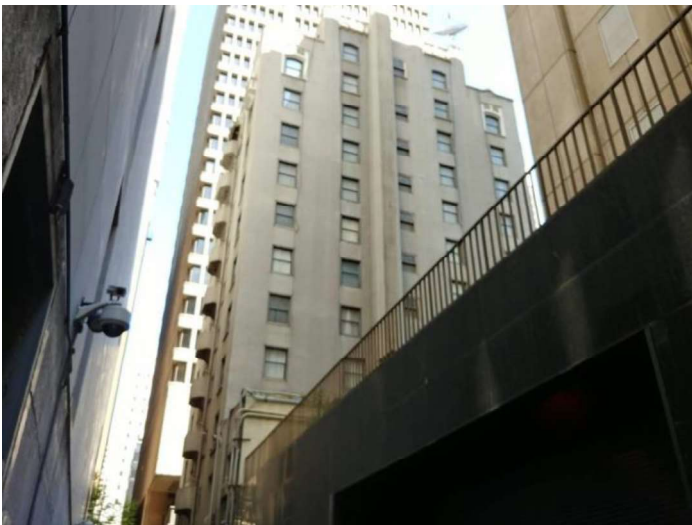
Before Project Photos



SUBJECT, FACING EAST



SUBJECT, FACING SOUTH



SUBJECT, FACING NORTH



SUBJECT, FACING WEST



SUBJECT, FACING NORTHEAST



SUBJECT, FACING EAST



LOBBY/CHECK-IN AREA



LOBBY AREA



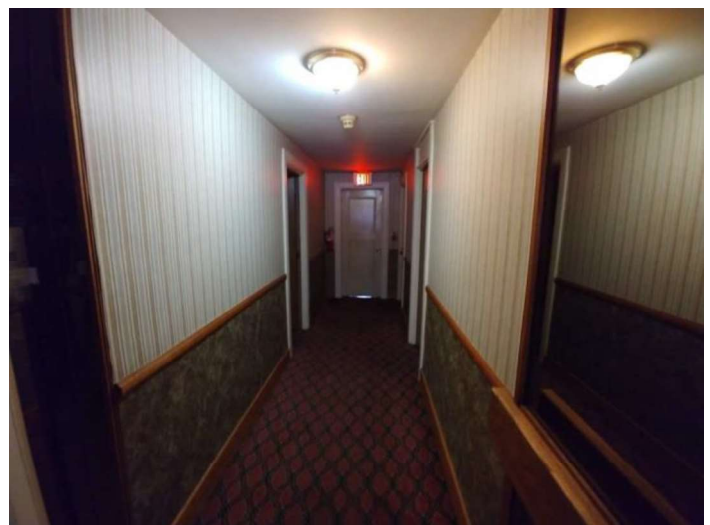
LOBBY AREA



LOBBY OFFICE AREA



ELEVATOR LOBBY AREA



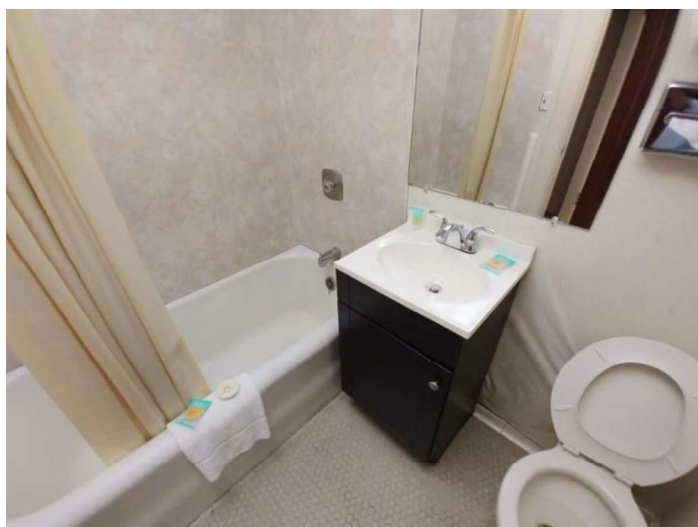
TYPICAL HALLWAY



GUEST ROOM 1005



GUEST ROOM 1005



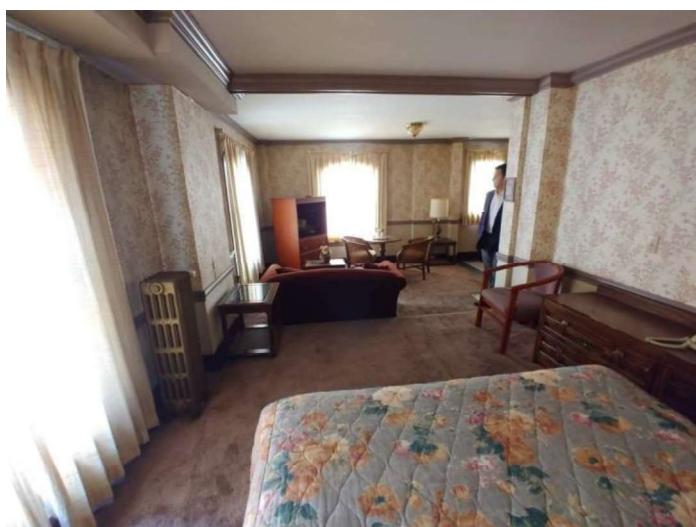
GUEST ROOM 1005



GUEST ROOM 1001



GUEST ROOM 1001



GUEST ROOM 1001



GUEST ROOM 1001



GUEST ROOM 1001



GUEST ROOM 908



GUEST ROOM 908



GUEST ROOM 901



GUEST ROOM 901



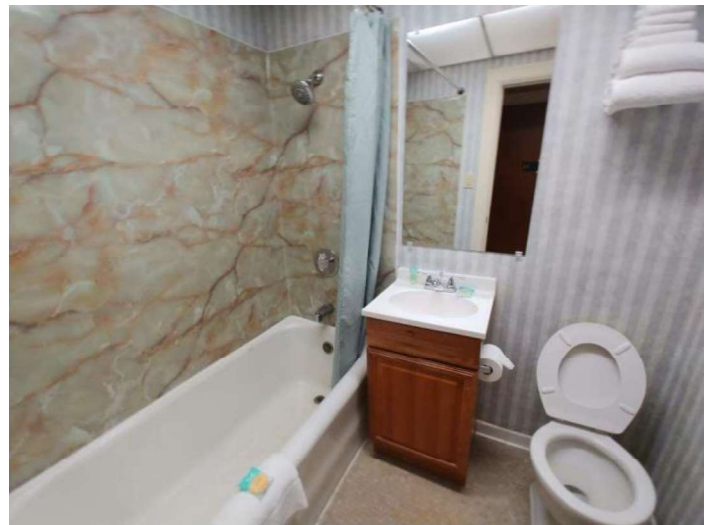
GUEST ROOM 901



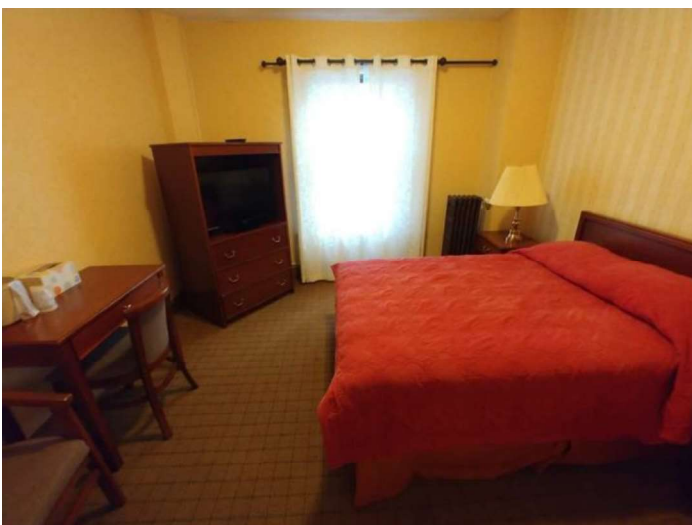
GUEST ROOM 309



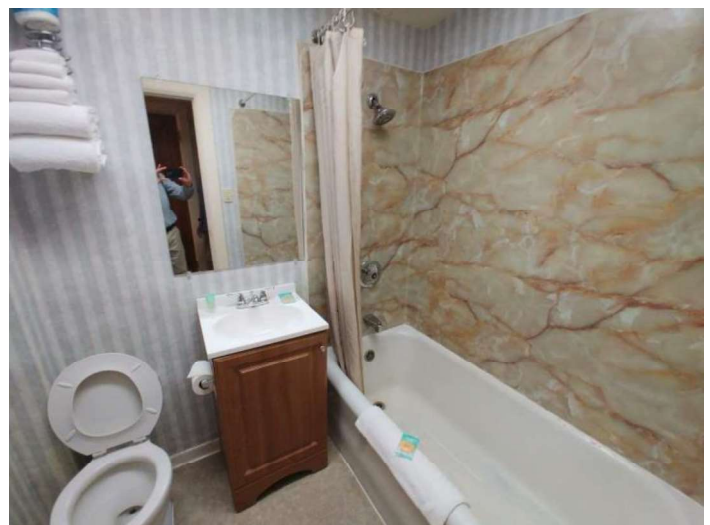
GUEST ROOM 309



GUEST ROOM 309



GUEST ROOM 308



GUEST ROOM 308



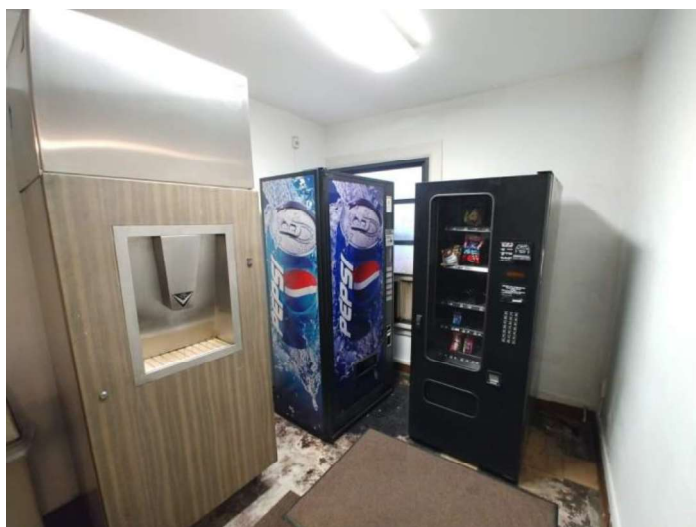
SERVICE LAUNDRY AREA



MEETING SPACE (USED AS STORAGE)



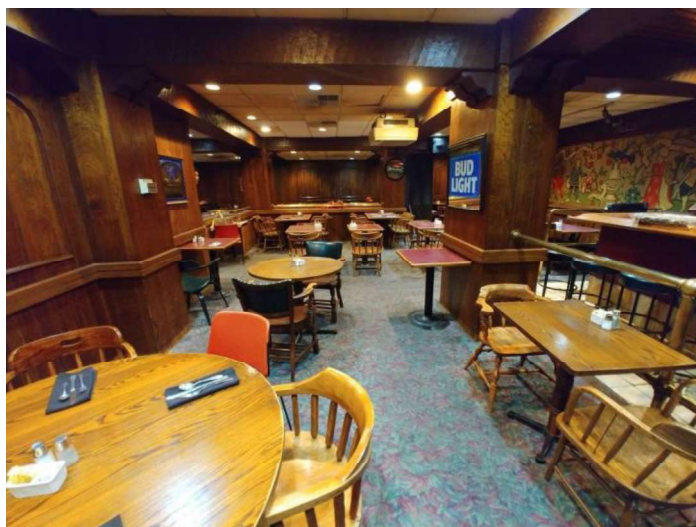
OFFICE SPACE



VENDING/ICE AREA



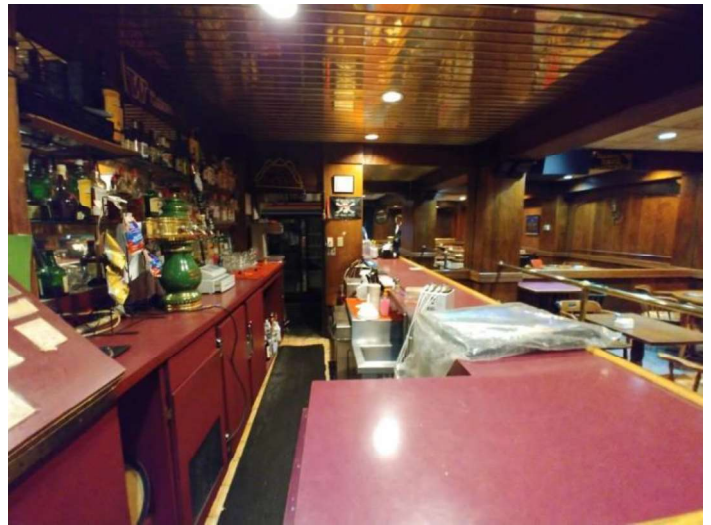
STAIRWELL



DINING AREA



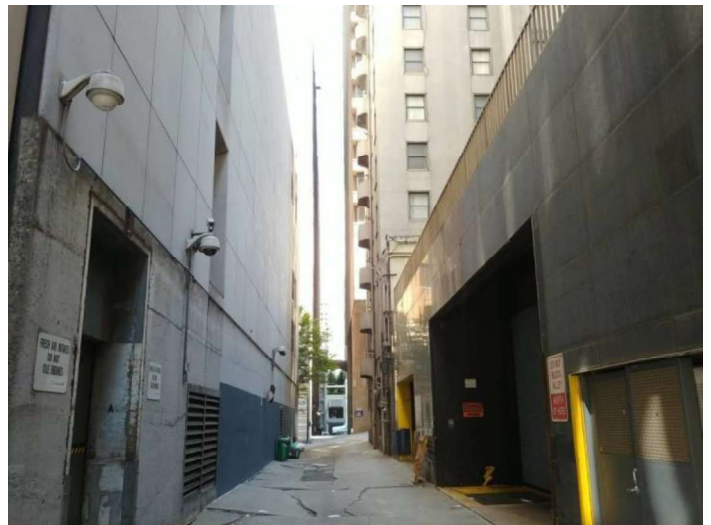
DINING AREA



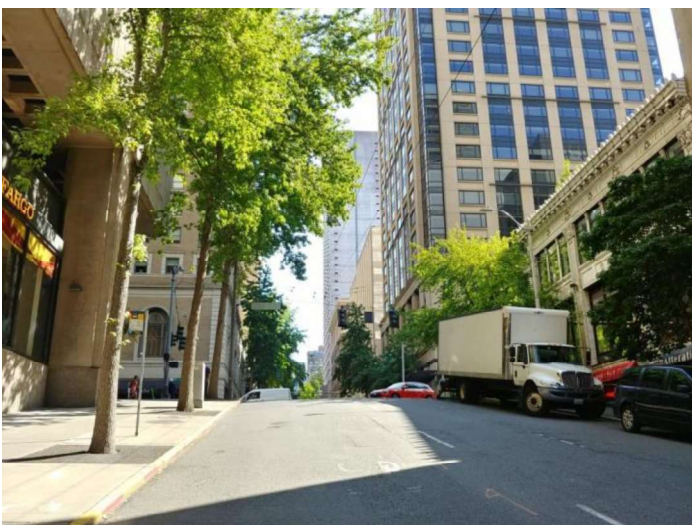
BAR AREA



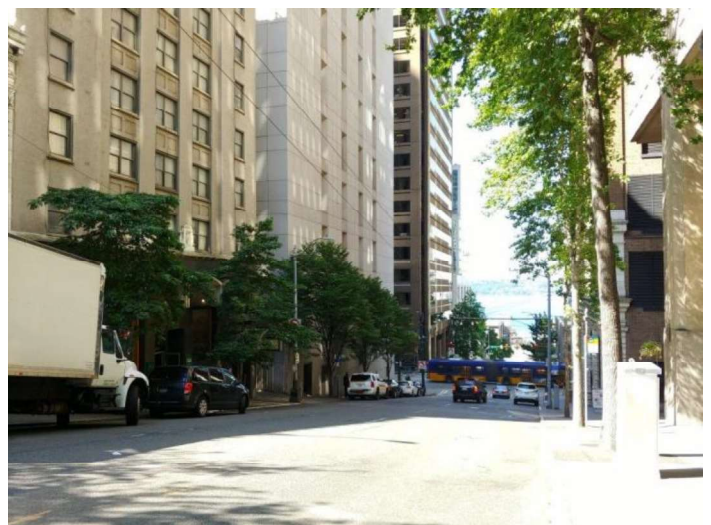
KITCHEN AREA



ALLEY, FACING NORTHWEST



SENECA ST, FACING NORTHEAST



SENECA ST, FACING SOUTHWEST

Continental Hotel
315 Seneca Street

After Project Photos





Typical Exterior View



Typical Exterior View



Typical Exterior View



Typical Exterior View



Check-In Desk Area



Future Lobby



Future Lobby Bar Area



Guestroom Bay



Typical Guestroom Bay



Old Housekeeping (to be guest suite)



Basement (Future Back of House/Laundry)



Intersection of 3rd Avenue and Seneca St