

# Gas Works Park Kite Hill Restoration - Turnaround Landmarks Preservation Board

---

David Graves, Strategic Advisor | February 5, 2025



**Seattle**  
Parks & Recreation

Healthy People, Thriving Environment, Vibrant Community

#SeattleShines



# Kite Hill Erosion

## EROSION DUE TO HEAVY USE





# Kite Hill Erosion

## CHALLENGE

Ongoing maintenance and annual reseeding practice has not been able to keep up with heavy use and program demands. It has caused:

- Lost of Soil cover required for landfill, especially around top of Kitehill.
- Damage to the sundial from eroded sand.





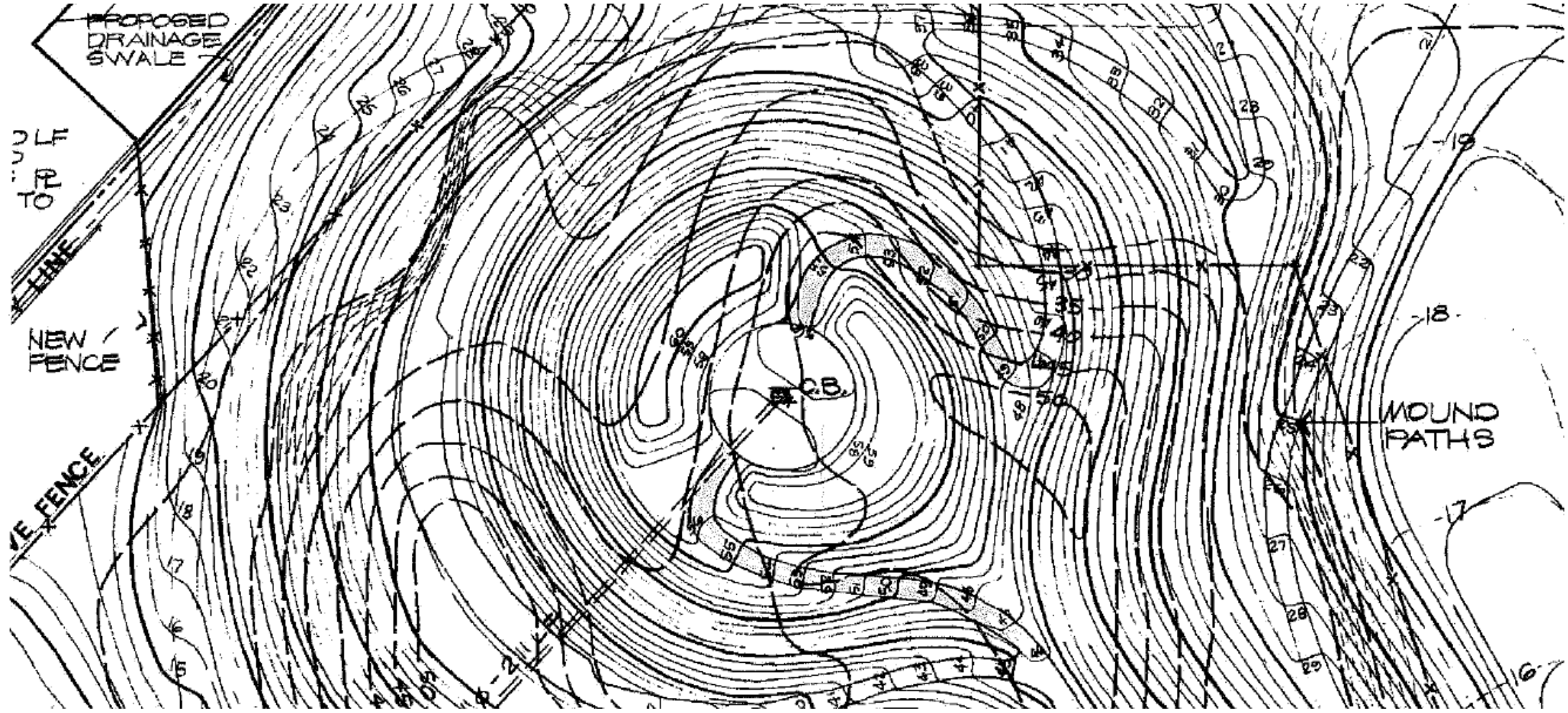
# Kite Hill Erosion

## REMEDIATION PROPOSAL

- Restore Kite Hill to landmarked elevation for required soil cover.
- Apply asphalt surfacing with Streetbond coating on berms surrounding Sundial plaza .
- Erosion control blanket, hydroseeding and turf re-establishment for damaged turf areas.
- Adding turnaround to reduce turf damage at lower meadow area east of Kite Hill.

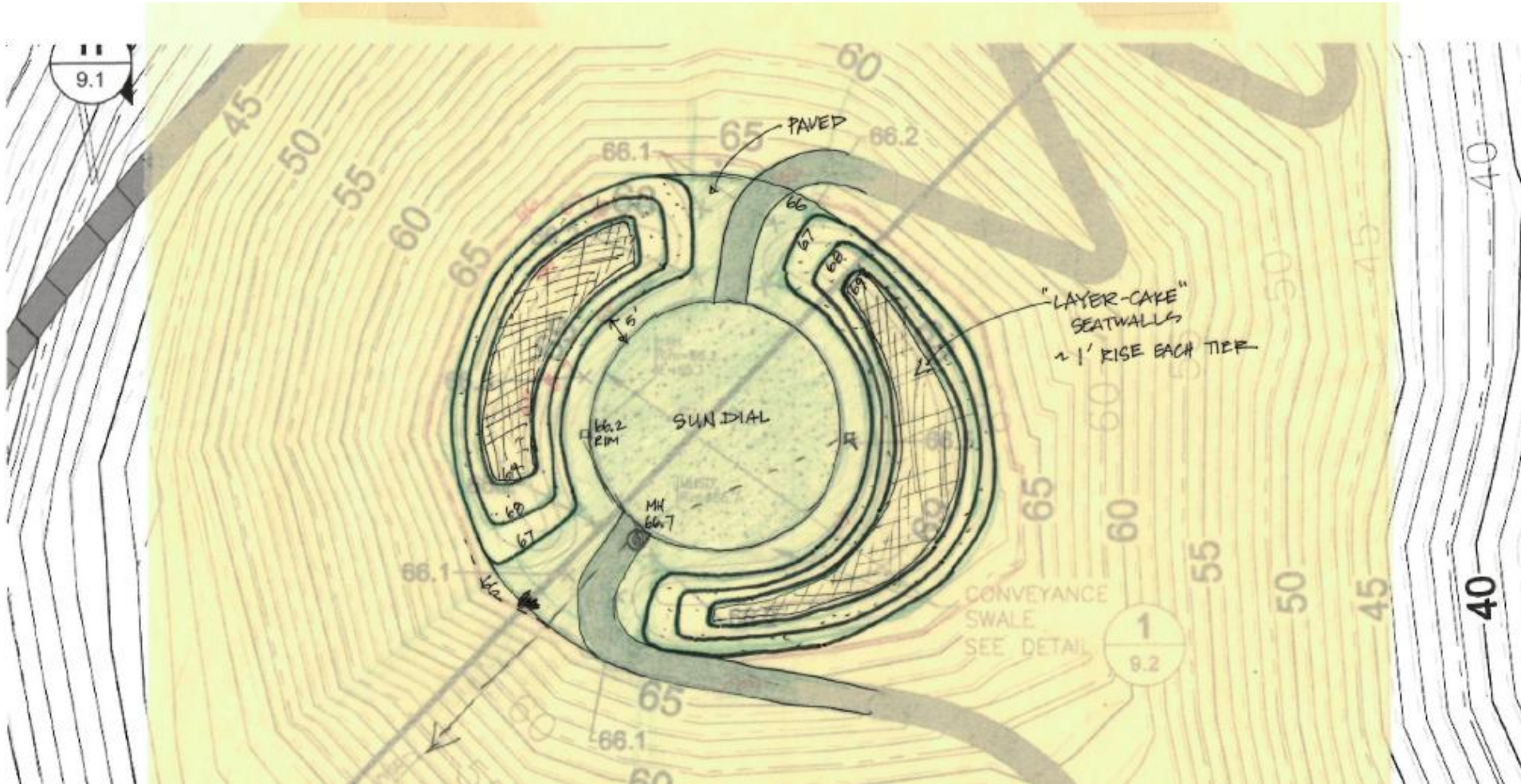


# Kite Hill – Original Grading Plan

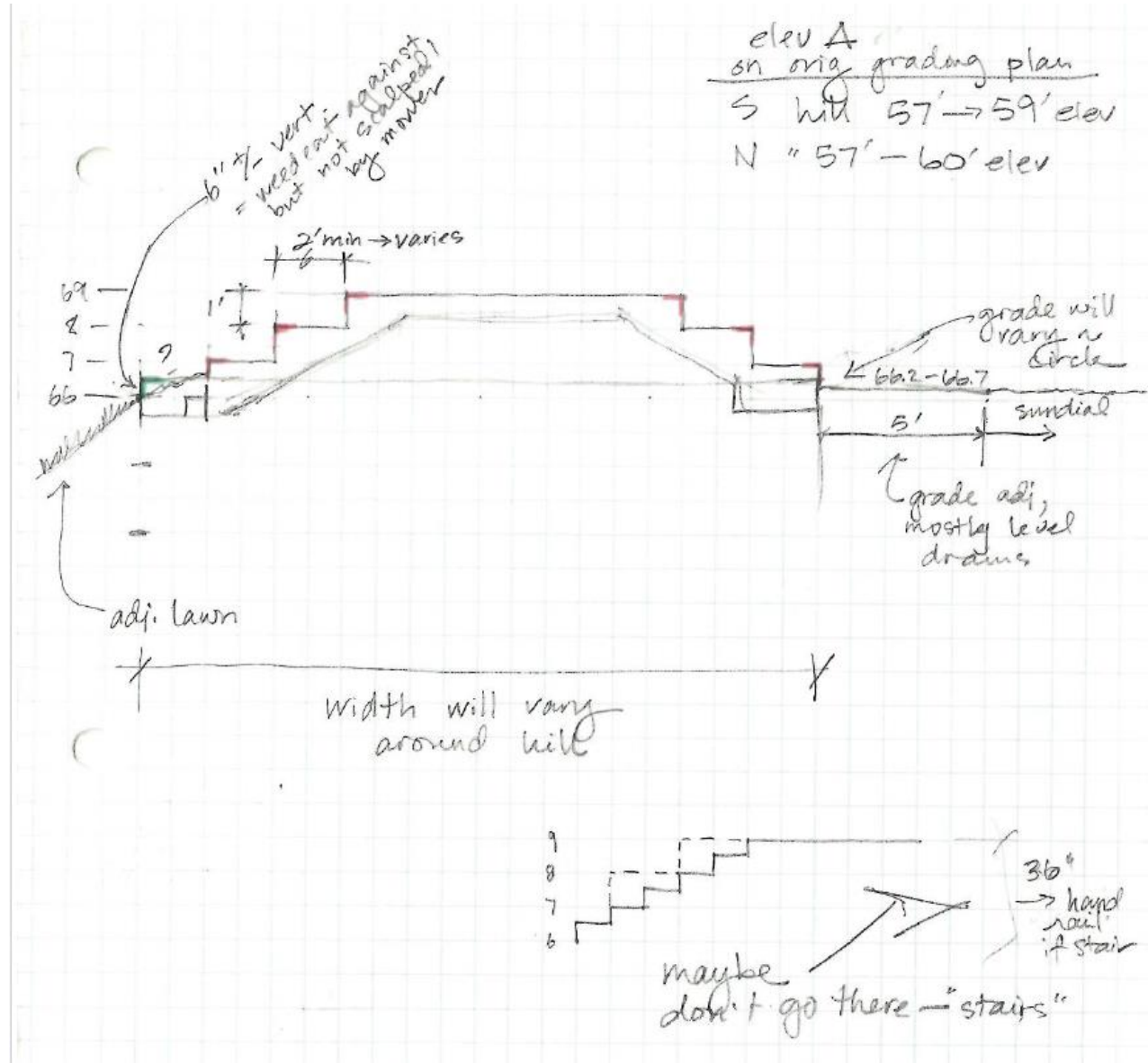




# Kite Hill – Restoration



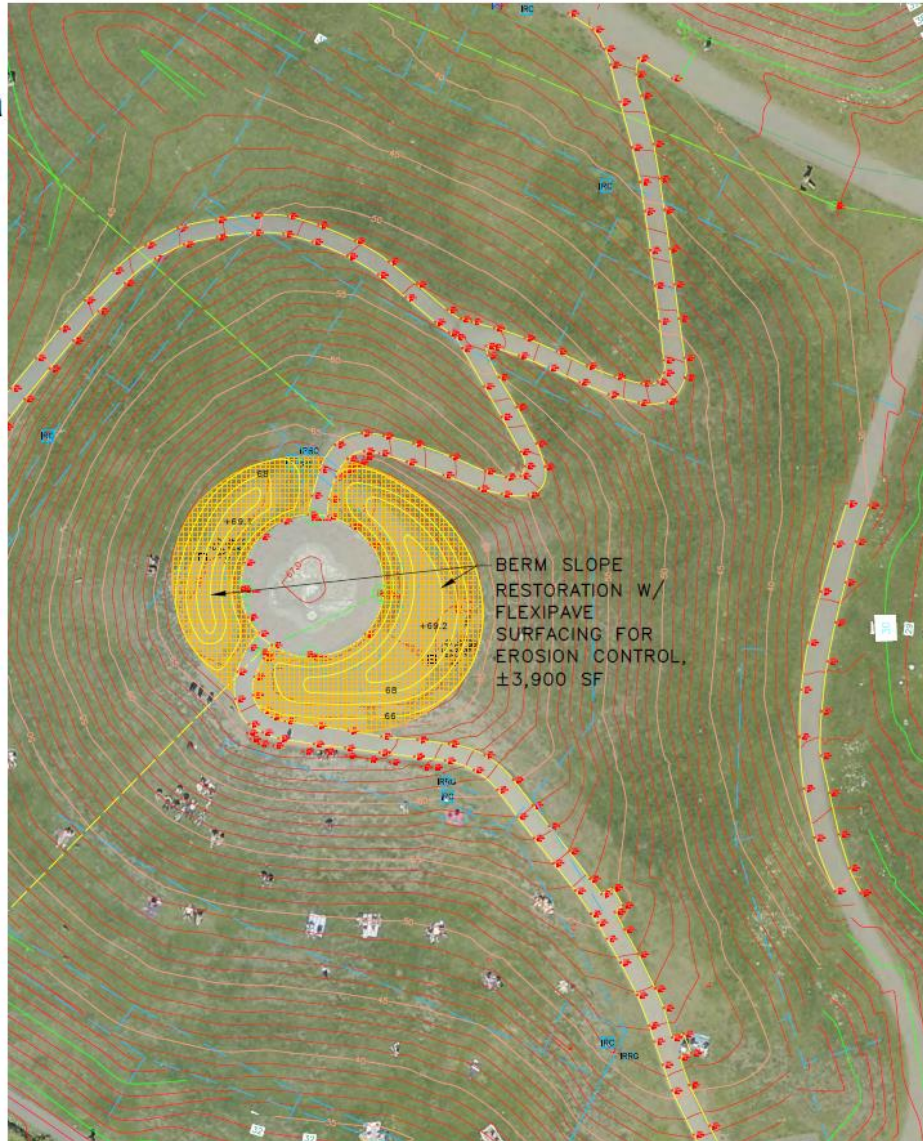
# Kite Hill – Restoration Study





# Kite Hill – Restoration Option

Proposed Area  
to apply  
FlexiPave



KBI FLEXI-PAVE COLOR CHART

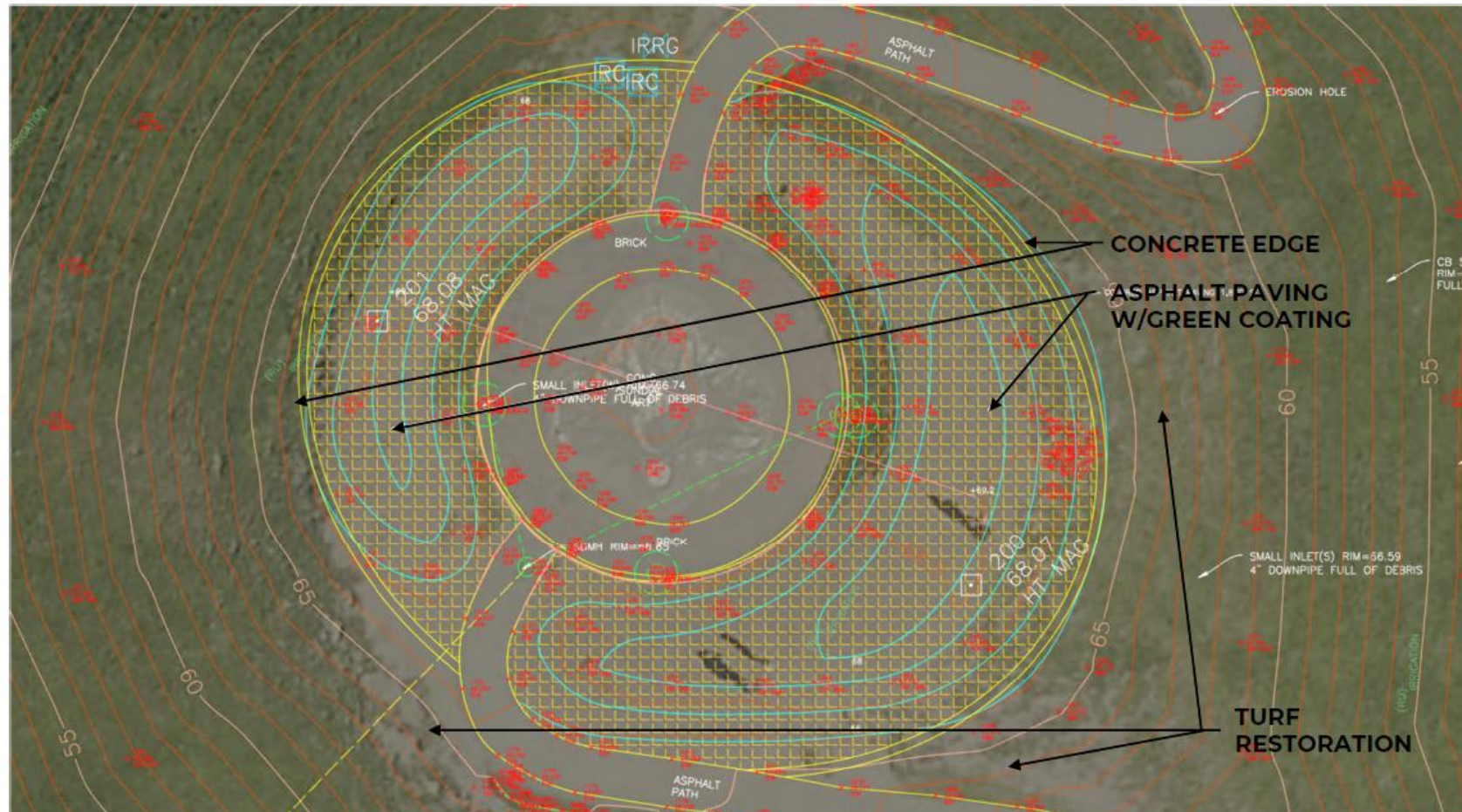




# Kite Hill – Restoration Plan

## WORK SCOPE INVOLVES:

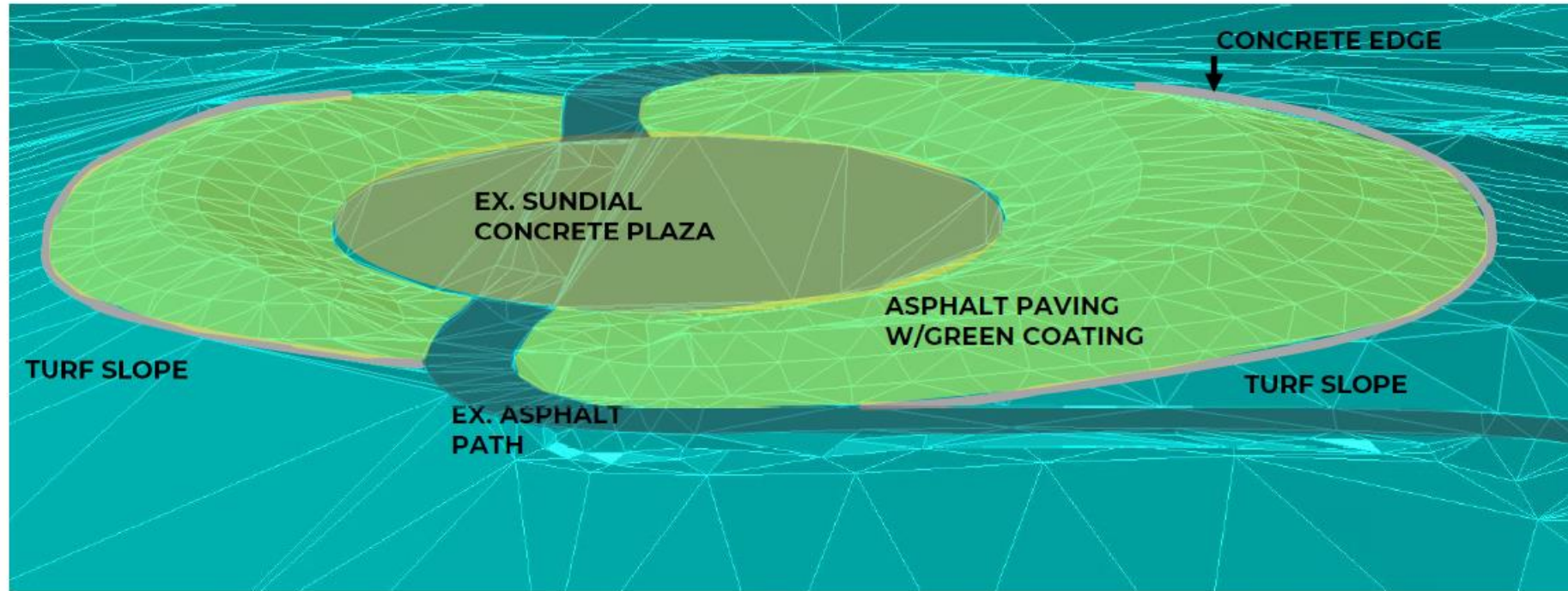
- Balance earthwork on site for berm restoration
- Approximate Asphalt paving area at berms: 3,700 sq. ft.
- Proposed Erosion Control & turf restoration: 5,000 sq. ft.
- Asphalt Turnaround paving addition: 1,510 sq. ft



# Kite Hill – Restoration Plan 3D

## WORK SCOPE INVOLVES:

- Balance earthwork on site for berm restoration
- Estimated Asphalt paving: 3,700 sq. ft.
- Erosion Control & turf restoration: 5,000 sq. ft.

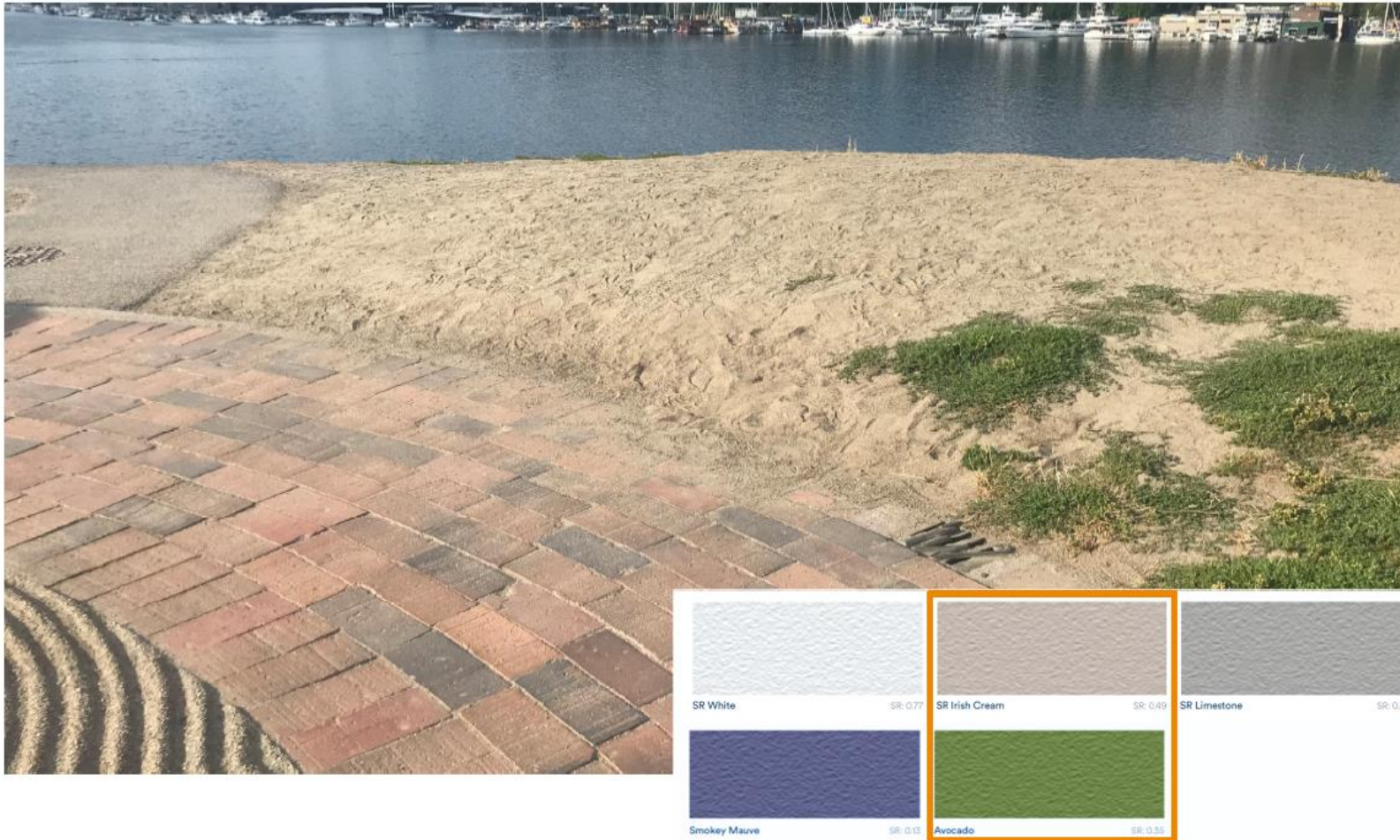




# Kite Hill – Restoration Plan Details

## ASPHALT SURFACING on Kite Hill

- Pavement Coating: Streetbond Pro220
- Color alternatives: Avocado to simulate grass green or Irish Cream for contrast
- Concrete edge at end of asphalt paving for stabilization





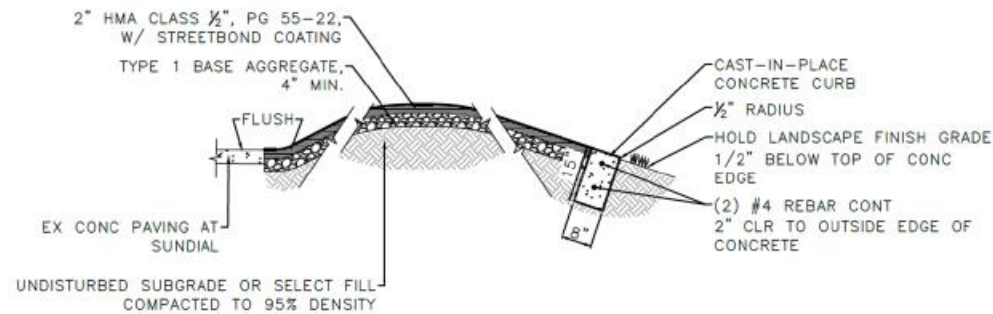
# Kite Hill – Streetbond Pro Details





# Kite Hill – Asphalt/Concrete Details

## ASPHALT/CONCRETE EDGE DETAILS



① ASPHALT PAVING W/ CONC EDGE – KITE HILL  
NOT TO SCALE

10'

MIN.D

# Vehicle Turnaround

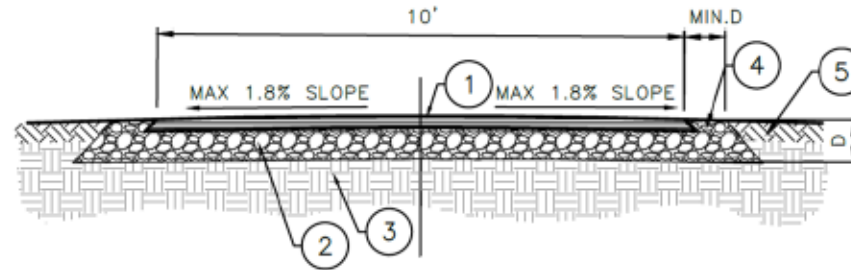
## ASPHALT SURFACING – Service Road turnaround

- Partial widening ex. asphalt paving to 11': 170 sq ft
- Enlarge turning corner to 20' radius: 90 sq ft
- New 10' wide asphalt paving for turnaround: 1,250 sq ft





# Turnaround – Detail



## ASPHALT PAVING NOTES:

1. HMA CLASS  $\frac{1}{2}$ " PG58-22 FOR ALL WEARING COURSE  
THICKNESS: 3" FOR SERVICE VEHICLE
2. TYPE 1 BASE AGGREGATE  
THICKNESS: MIN 4" FOR PATHWAYS; 6" FOR VEHICLE TRAFFIC
3. UNDISTURBED SOIL OR COMPACTED SUBGRADE PER SECTION 31 00 00  
EARTHWORK SPECIFICATION.
4. TYPE 1 AGGREGATE SHOULDER  
MIN. WIDTH "D" EQUALS TO THICKNESS OF ASPHALT AND BASE AGGREGATE.
5. CONDITION BEYOND PAVEMENT SECTION VARIES PER PLAN.

② ASPHALT PAVING – SERVICE ROAD TURNAROUND  
NOT TO SCALE

# Thank you!

