



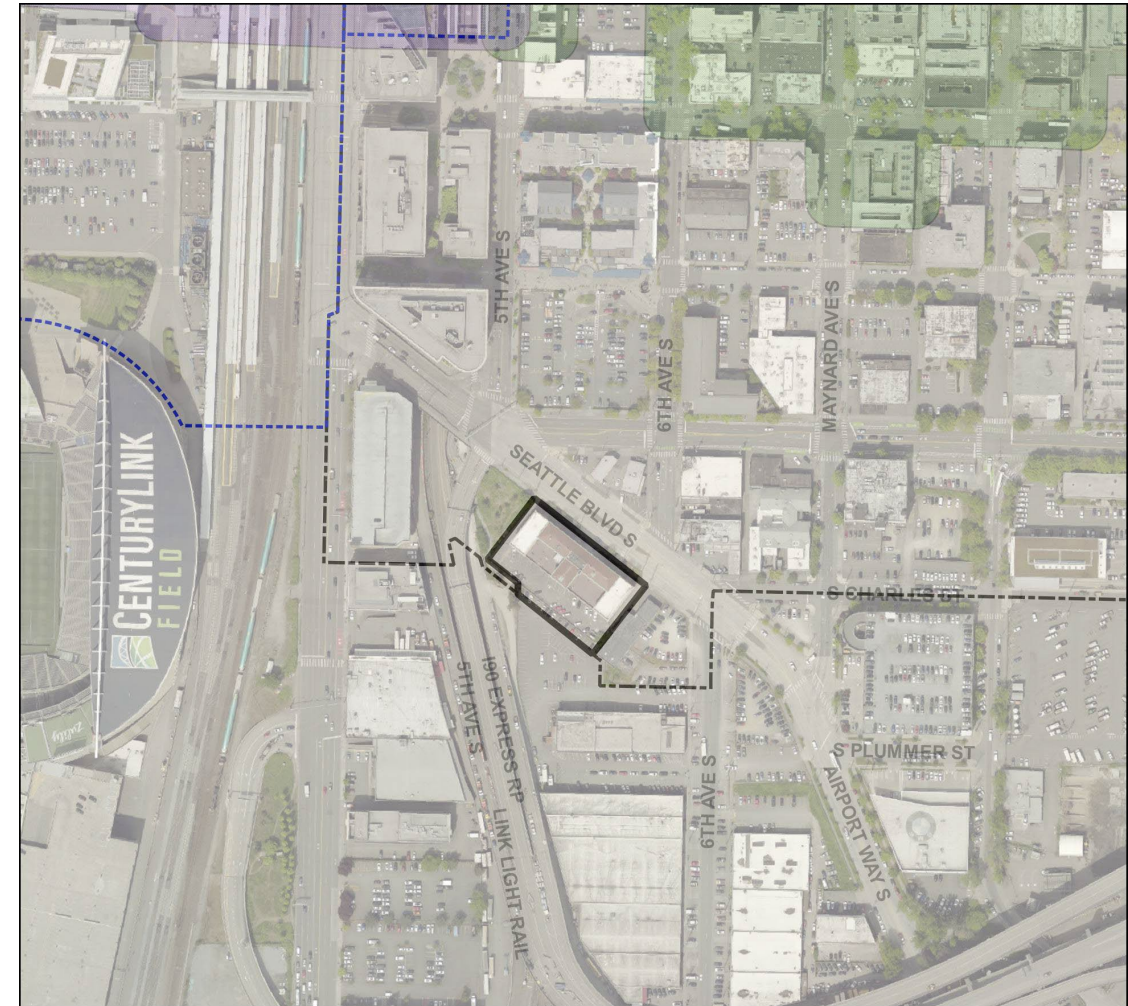
U.S. IMMIGRANT STATION AND ASSAY OFFICE

INS Building | Seattle Landmarks Preservation Board | Nomination Meeting




Historic Seattle | Northwest Vernacular | June 5, 2024

VICINITY



City of Seattle Districts

 International District Special Review District (SMC 23.66)

 Pioneer Square Preservation District

National and Washington Heritage Register Historic Districts

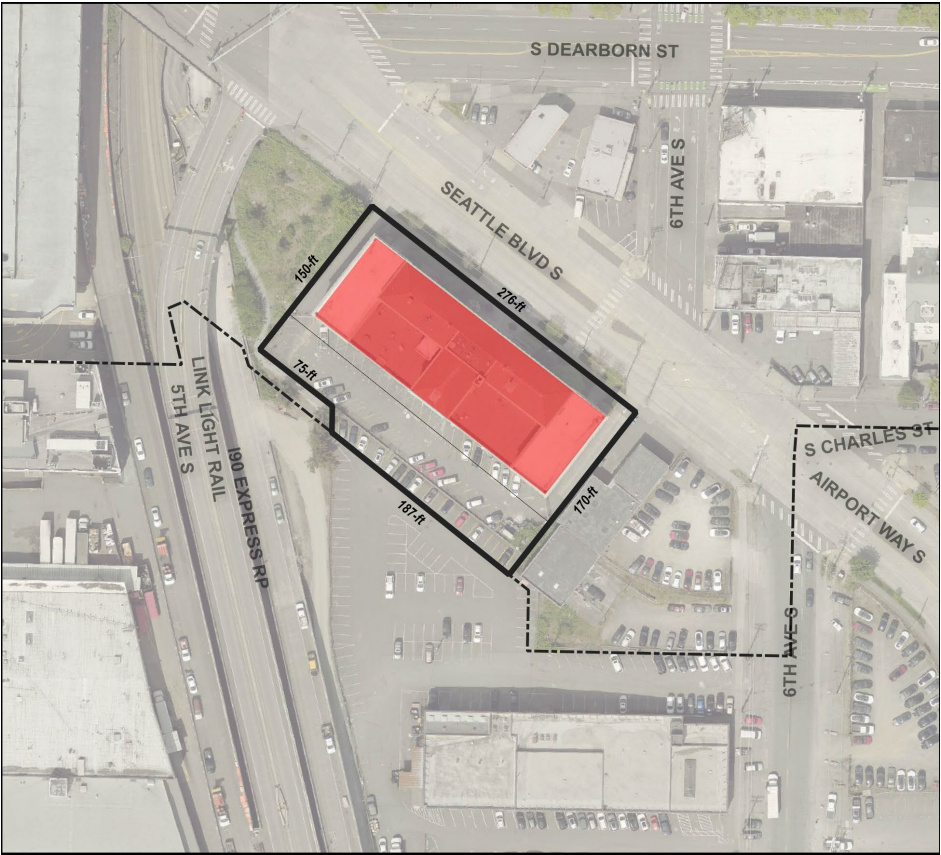
 Seattle Chinatown Historic District

 Pioneer Square--Skid Road Historic District (Including Boundary Increases)

 Nominated property boundary (both parcels)

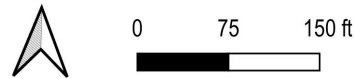


NOMINATED PROPERTY (SITE)



City of Seattle Districts

- International District Special Review District (SMC 23.66)
- Pioneer Square Preservation District
- Nominated property boundary (both parcels)
- U.S. Immigrant Station and Assay Office building footprint
- King County parcels





BUILDING EXTERIOR | NORTH FACADE



NORTH FACADE | ARCHITECTURAL DETAILS



NORTHEAST CORNER



EAST FACADE



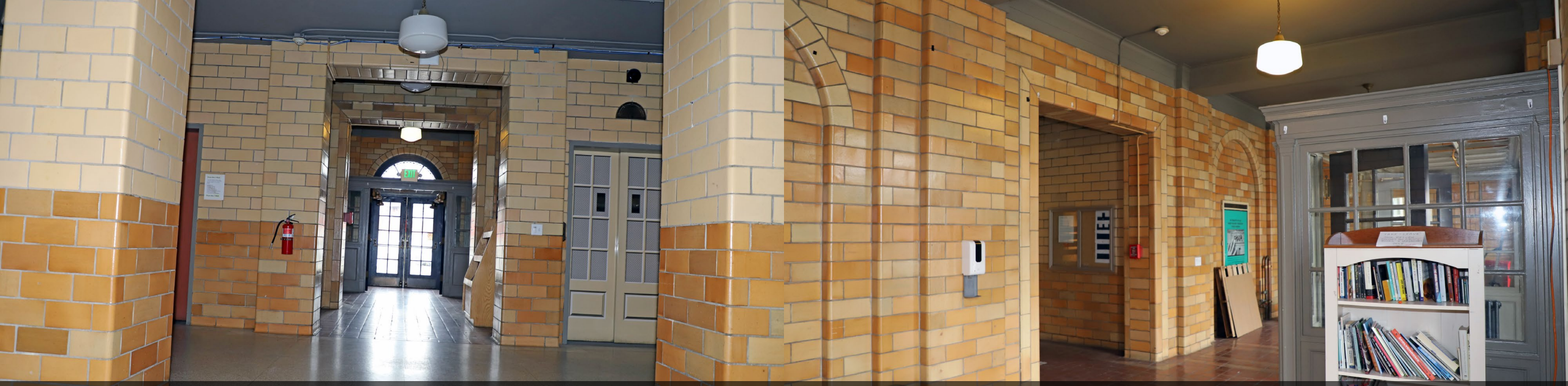
SOUTH FACADE



WEST FACADE



NORTHWEST CORNER



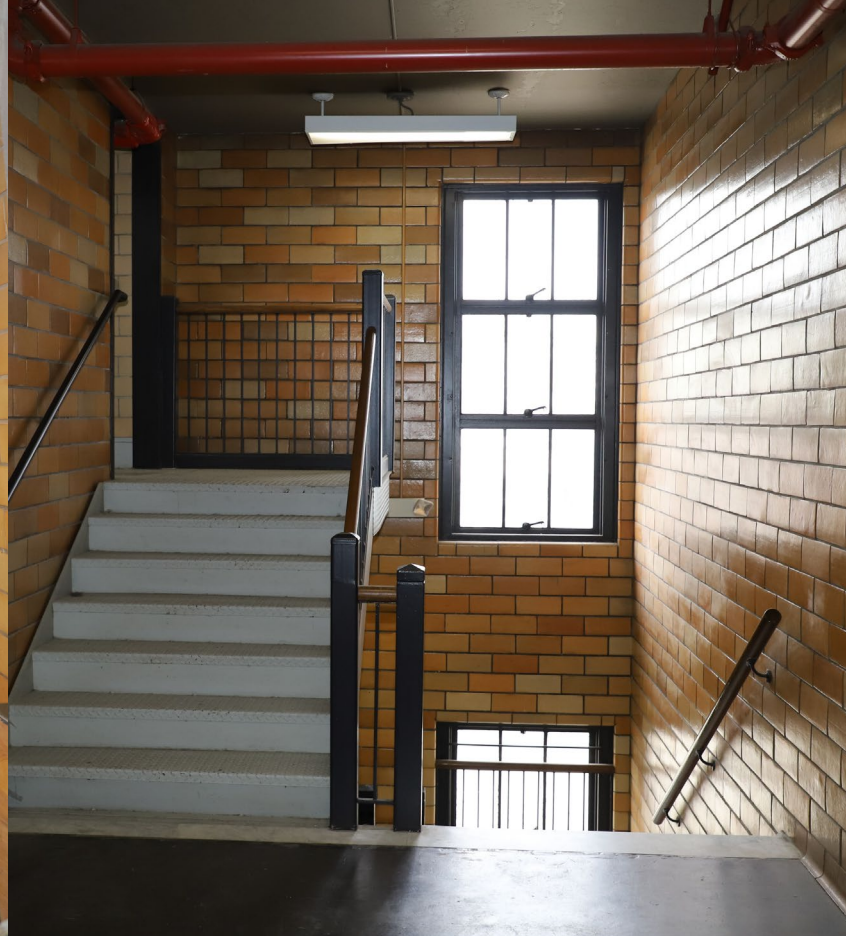
BUILDING INTERIOR | NORTH ENTRANCE





FIRST FLOOR





EAST AND WEST STAIRWAYS



BASEMENT



SECOND FLOOR





SECOND FLOOR | PATIOS





THIRD FLOOR



THIRD FLOOR



FOURTH FLOOR

THE CHINATOWN- INTERNATIONAL DISTRICT



Property of The Seattle Public Library

Property of The Seattle Public Library

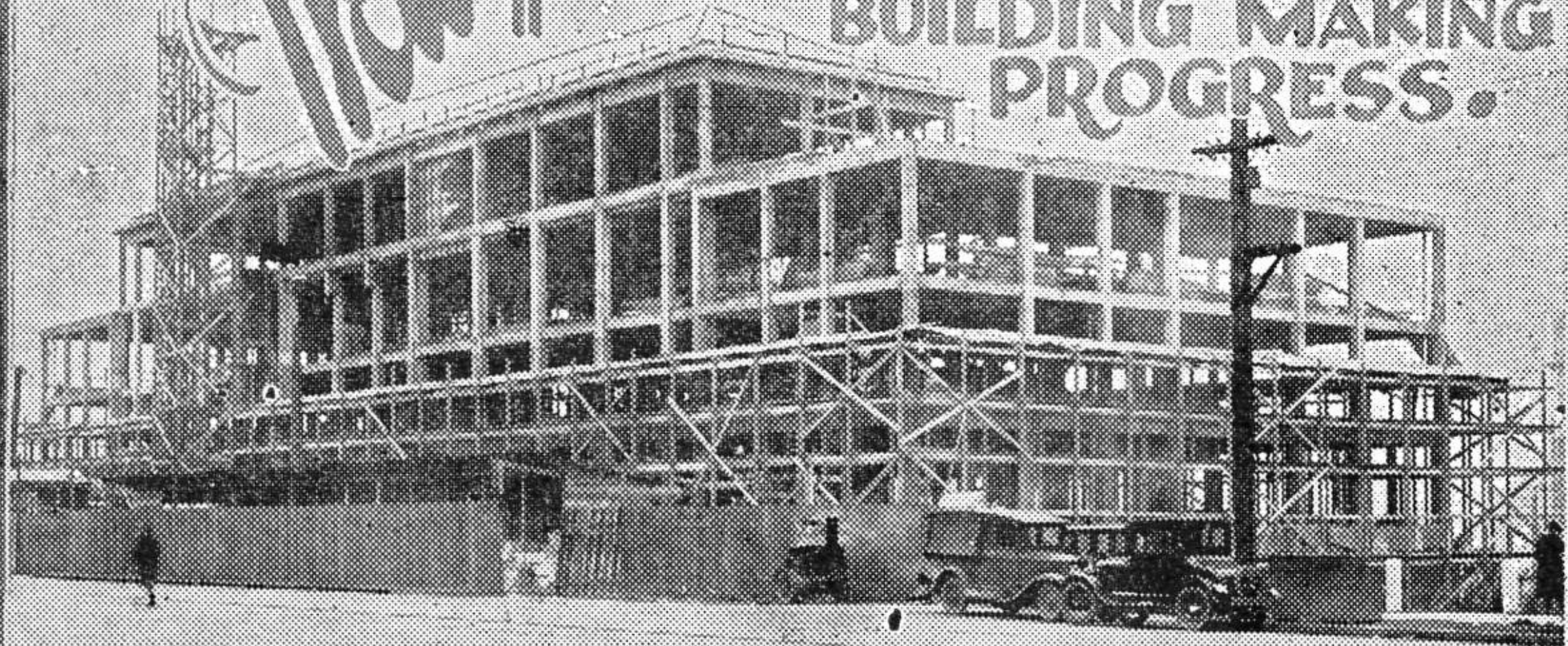
Property of The Seattle Public Library

Property of The Seattle Public Library

NEW

\$580,000

**U.S. IMMIGRATION
BUILDING MAKING
PROGRESS.**





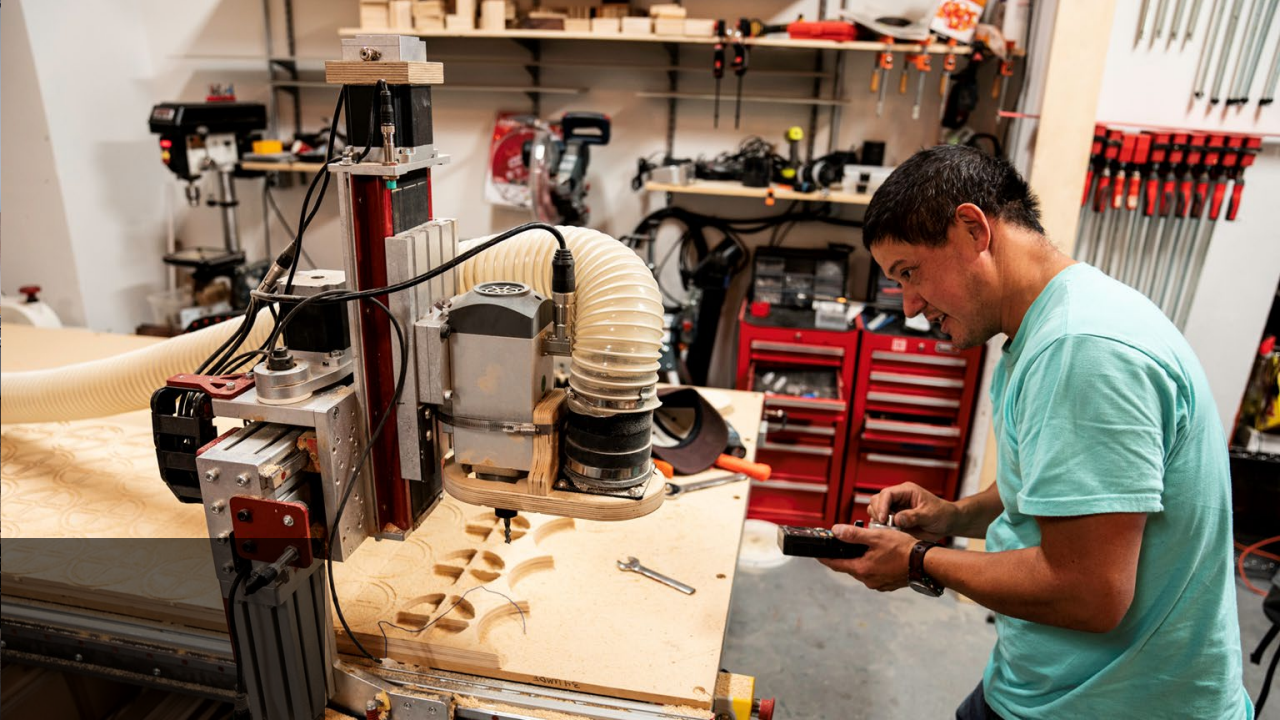


IMMIGRATION STATION





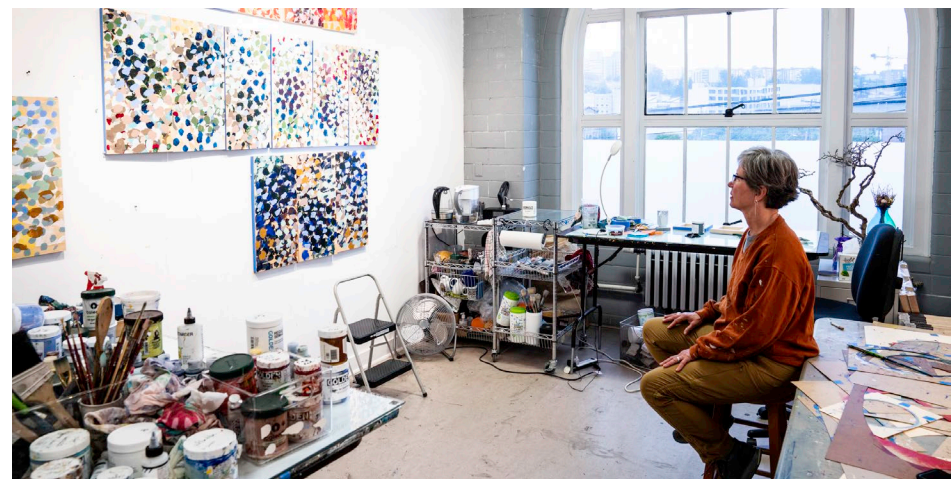
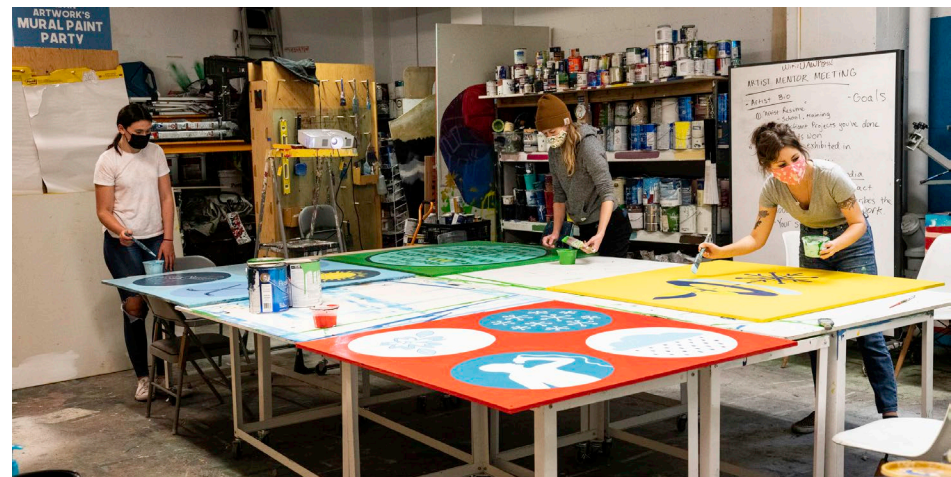
ASSAY OFFICE



RECENT USE



RECENT USE







CHINESE IMMIGRATION AND POLITICAL DETAINEES



DURING RECESS—Thomas S. Masuda, on trial in federal court as an unregistered representative of Japanese government, and his wife look over one of the exhibits to be introduced in case.

—(Picture by Post-Intelligencer Staff Photographer)



JAPANESE IMMIGRATION AND INCARCERATION



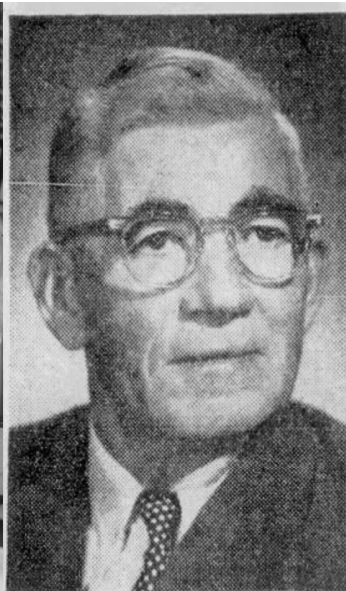
COLD WAR ERA IMMIGRATION



POST-COLD WAR ERA IMMIGRATION

MEDITERRANEAN REVIVAL





EIVIND ANDERSON



HABS No. WA-215-8

SUPERVISING ARCHITECT AND BUILDER

DESIGNATION STANDARDS (SMC 25.12.350)

- a) It is the location of, or is associated in a significant way with, a historic event with a significant effect upon the community, City, state, or nation; or
- b) It is associated in a significant way with the life of a person important in the history of the City, state, or nation; or
- c) It is associated in a significant way with a significant aspect of the cultural, political, or economic heritage of the community, City, state or nation; or
- d) It embodies the distinctive visible characteristics of an architectural style, or period, or a method of construction; or
- e) It is an outstanding work of a designer or builder; or
- f) Because of its prominence of spatial location, contrasts of siting, age, or scale, it is an easily identifiable visual feature of its neighborhood or the city and contributes to the distinctive quality or identity of such neighborhood or the City.

In addition to meeting at least one of the above standards, the object, site, or improvement must also possess integrity or the ability to convey its significance.