



AT ITS CORE, THE EXTERIOR FRAMED PANELS ARE DESIGNED TO USE ART AS A CATALYST FOR PUBLIC ACTIVATION, SPARKING INTEREST AND PARTICIPATION IN LARGER NEIGHBORHOOD INITIATIVES. EACH FRAME DISPLAYS AN ARRAY OF ARTWORKS FROM LOCAL & VISITING ARTISTS CREATED IN SITU, REPRESENTING A RANGE OF STYLES AND MEDIUMS THAT EMBODY THE DIVERSE SPIRIT OF PIONEER SQUARE. THE ARTWORKS ARE ROTATED PERIODICALLY, OFFERING A FRESH AND DYNAMIC VISUAL EXPERIENCE TO ALL WHO VISIT.

MORE THAN JUST AN ART DISPLAY, FOREST FOR THE TREES IS A COMMUNITY-CENTRIC PROJECT. IT AIMS TO ACTIVATE PUBLIC SPACES, FOSTER COMMUNITY ENGAGEMENT, AND BECOME A CORNERSTONE FOR NEIGHBORHOOD EVENTS AND CULTURAL ACTIVITIES. BY INTEGRATING ARTISTS WORKING IN OPEN AIR INTO THE FABRIC OF DAILY LIFE IN PIONEER SQUARE, THE PROGRAM INSPIRES DIALOGUE, BRINGS PEOPLE TOGETHER, AND CONTRIBUTES TO THE CULTURAL VIBRANCY OF THIS HISTORIC DISTRICT.

THE CONSTRUCTION AND INSTALLATION OF THE ART FRAMES WOULD BE SCHEDULED FOR LATE SPRING OF 2024, SETTING THE STAGE FOR A TRANSFORMATIVE ARTISTIC EXPERIENCE THROUGHOUT PIONEER SQUARE. THE CULMINATION OF THE COMPLETION WILL BE TIMED WITH THE SEATTLE ART FAIR IN LATE JULY. THIS SYNCHRONICITY WILL ALLOW FOR A GRAND INAUGURAL ARTIST ACTIVATION, LEVERAGING THE HEIGHTENED ATTENTION AND FOOT TRAFFIC BROUGHT BY THE ART FAIR. THIS INAUGURAL EVENT IS DESIGNED TO BE A CELEBRATION OF ART, COMMUNITY, AND THE RICH CULTURAL TAPESTRY OF SEATTLE, MARKING THE BEGINNING OF AN ONGOING SERIES OF ART-FOCUSED PUBLIC ACTIVATIONS AND FREE COMMUNITY EVENTS WITHIN THE PROGRAM.

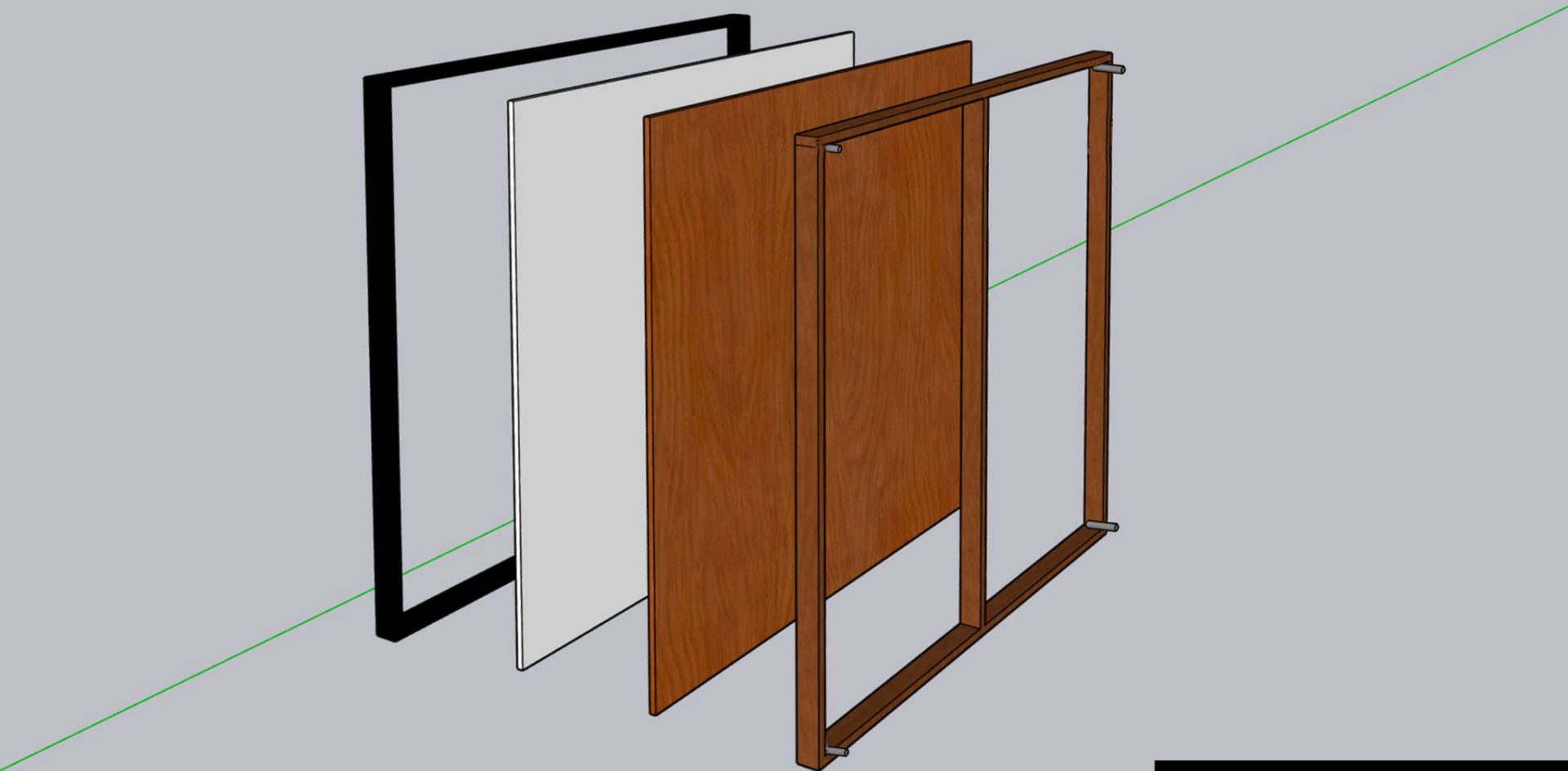
NEIGHBORHOOD ACTIVATION: SEATTLE ART FAIR 2024

N.W.CULTURE
ART·MUSIC
HISTORY·EVENTS
SHOPPING
DINING·DRINKS
HIDDEN WATERFALLS
& BURIED TREASURES

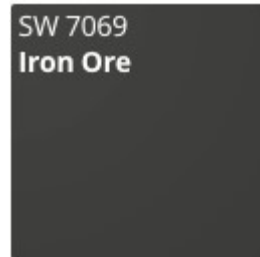




SITE SPECIFIC INSTALLATIONS



**MULTI LAYERED EXTERIOR GRADE
PLYWOOD CONSTRUCTION**



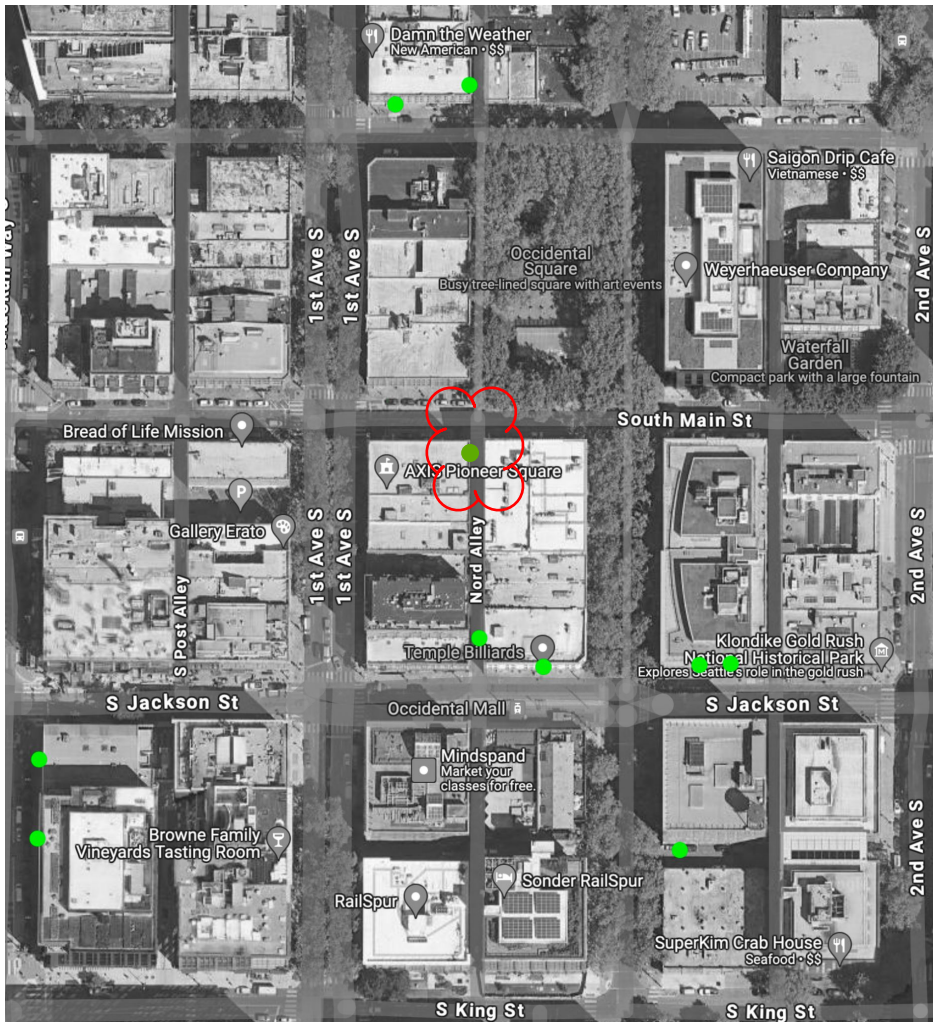


EXTERIOR FRAMED PANELS

10 x 10 FT

8 x 8 FT

6 x 6 FT

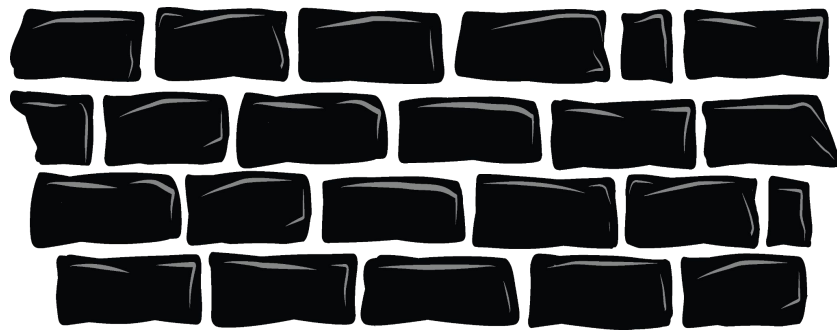


FOREST FOR THE TREES

PUBLIC ART PROJECT

● 2024: 6 Properties
10 New Frames

JULY 20 - 28



Clarification regarding anchor points on East wall of Globe Building:

The frame structure for the artwork that we are planning to install is 120" x 120", with anchor points connecting at each of the frames corners for structural integrity and stability. We prefer the bottom edge of the artwork to be within 48" off the ground in order for pedestrians to view the work.

We understand the concern with adding new anchor points to this location when previous anchor points already exist. Unfortunately the existing anchor points are at a height of 192" and 114", with a width of 142". In order to use these anchor points, we would need to only anchor at the top of the frame, using 3 of the 4 anchor points. This would make the frame structure less secure, and would also leave the bottom edge of the artwork 72" off the ground, which will detract from the viewing experience as it will be above most pedestrians.

If possible, our preference is to leave the existing anchors in place, while installing 4 new anchor points, allowing for more structurally secure and visible artworks.



113 South Main St

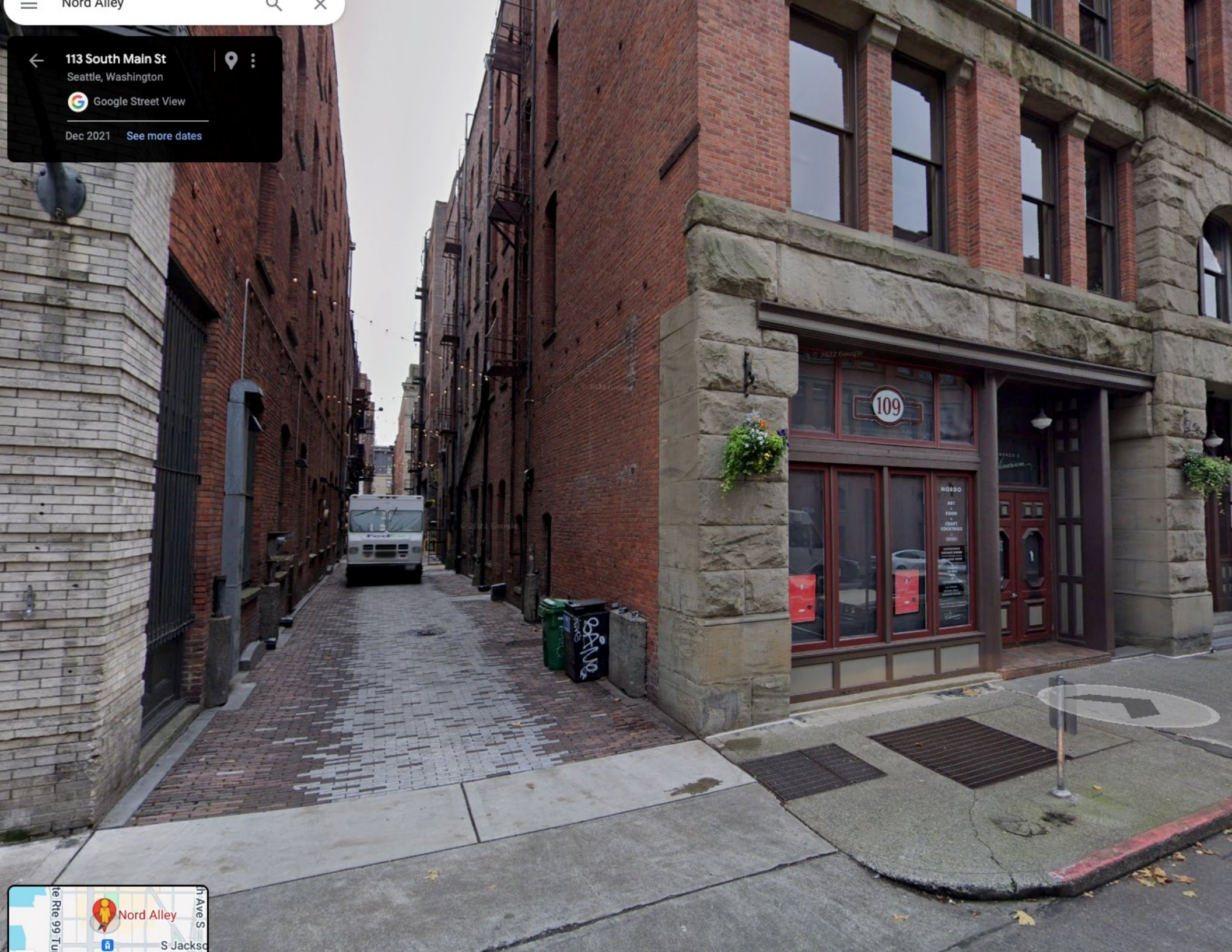
Seattle, Washington



Google Street View

Dec 2021

[See more dates](#)

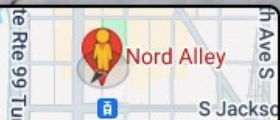


© 2022 Google

© 2022 Google

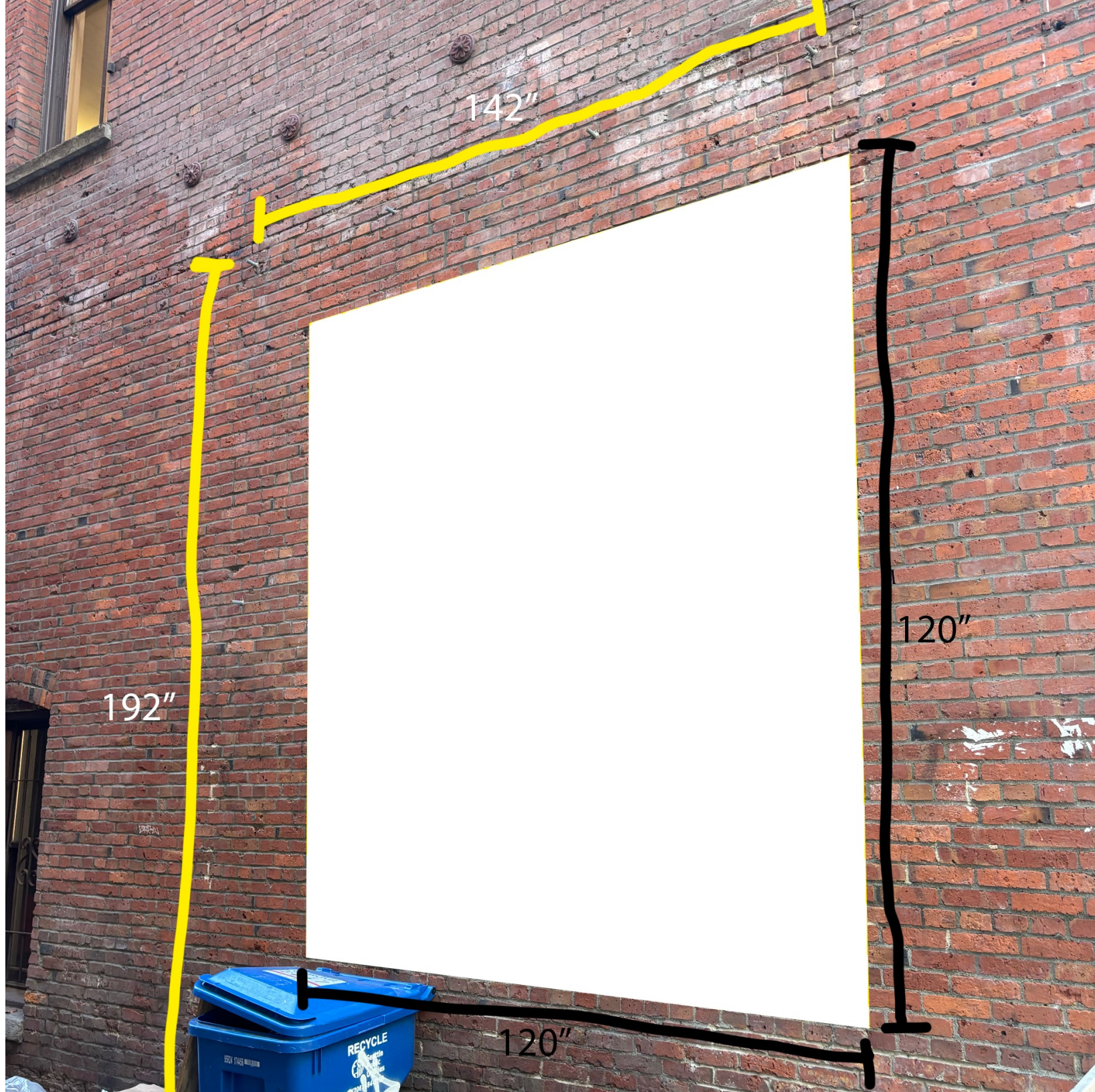
109

ROBBO
ART &
HOME
CRAFT
COCKTAILS



© 2022 Google

© 2022 Google

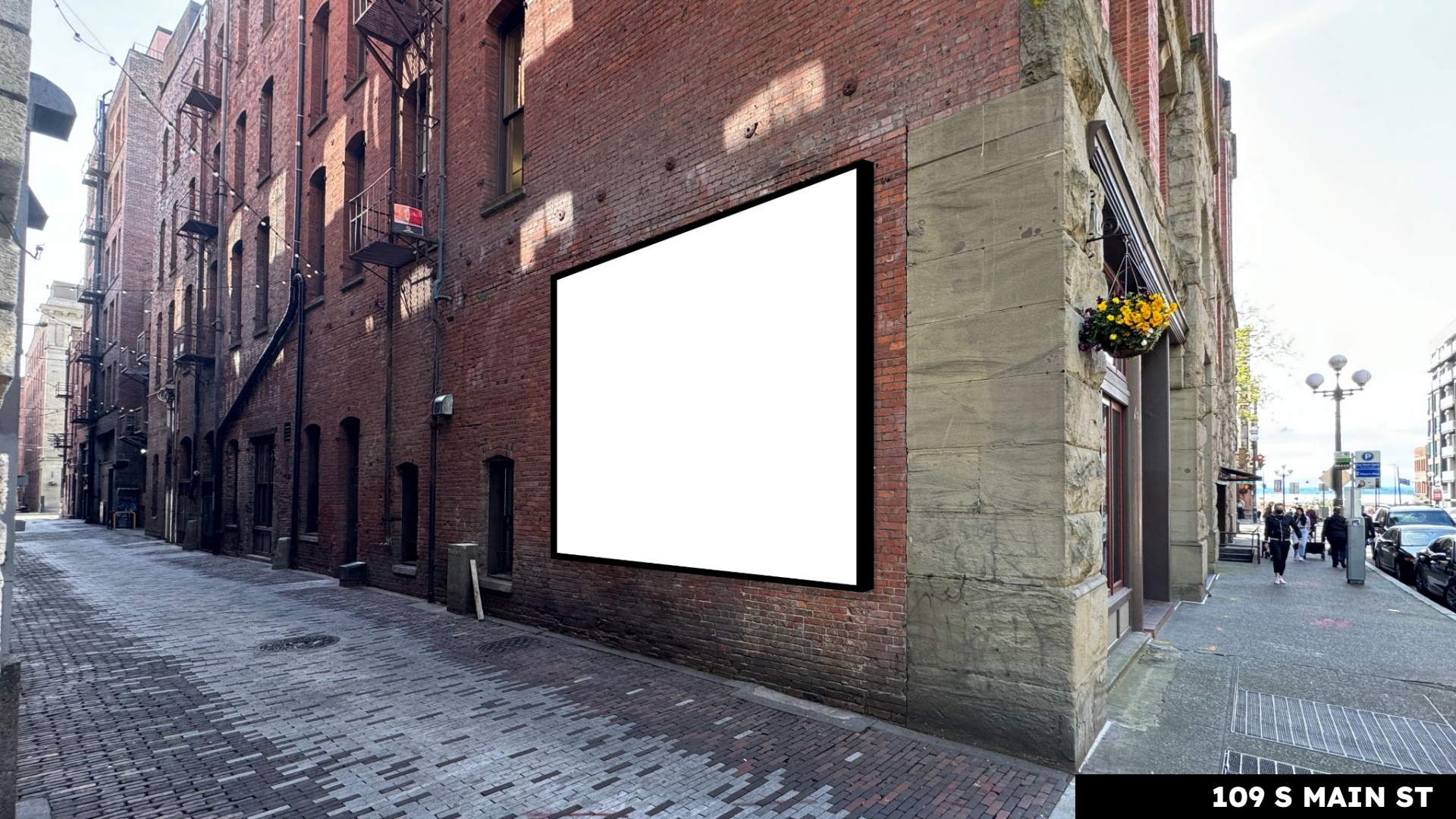


142"

192"

120"

120"



109 S MAIN ST

