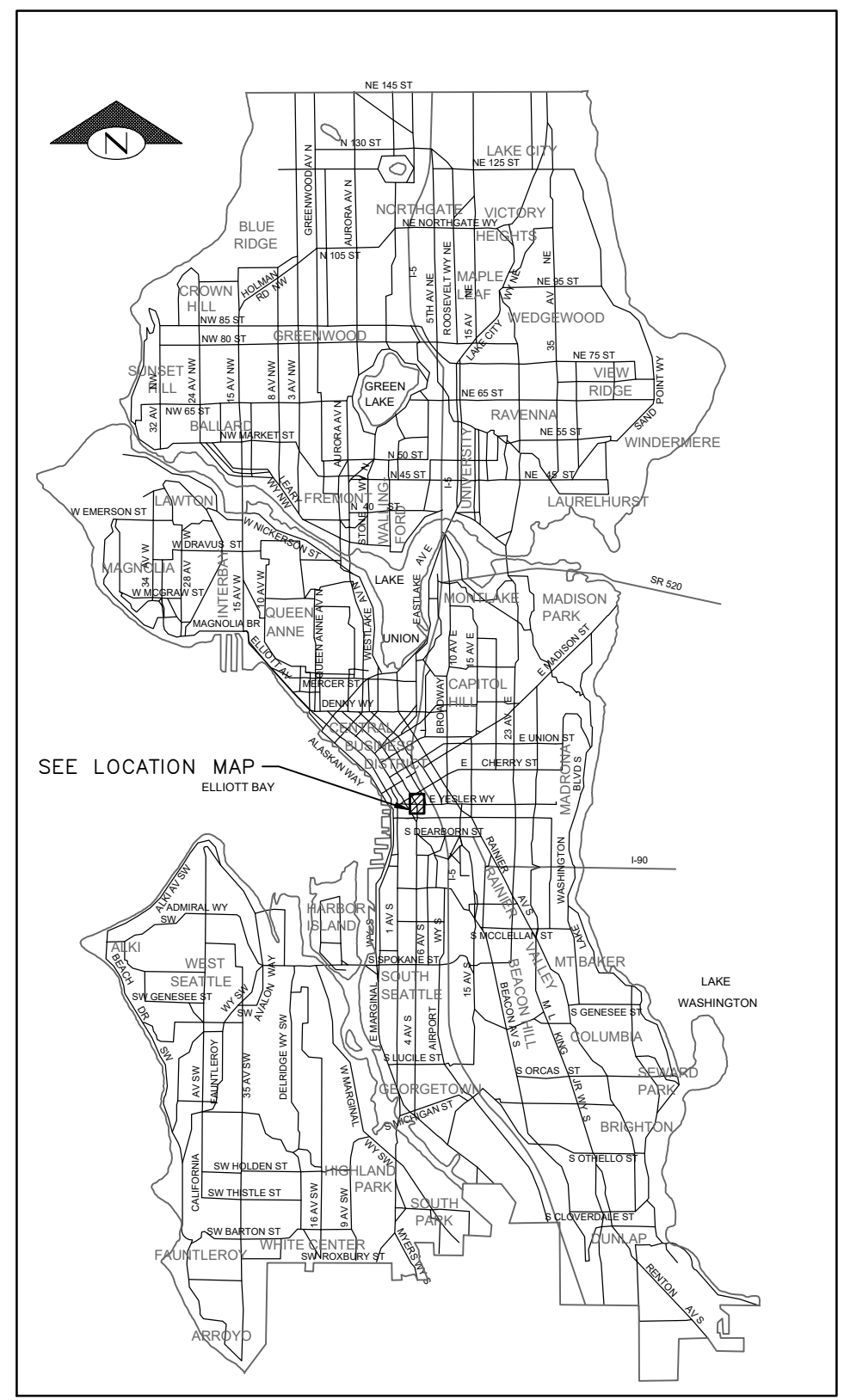
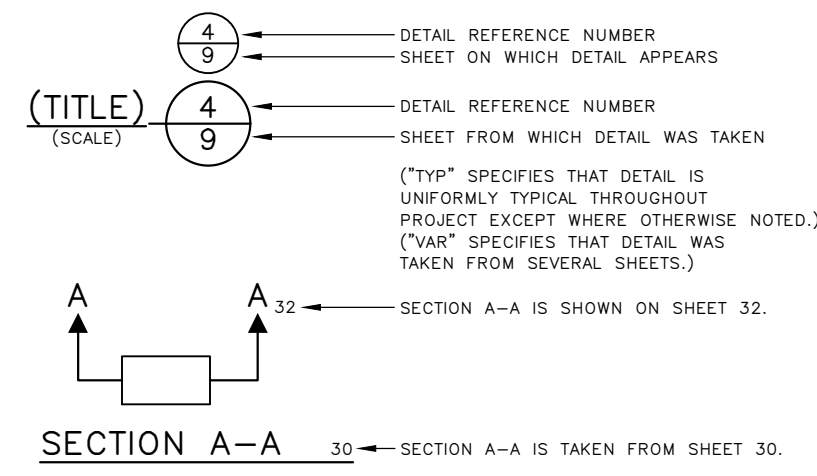


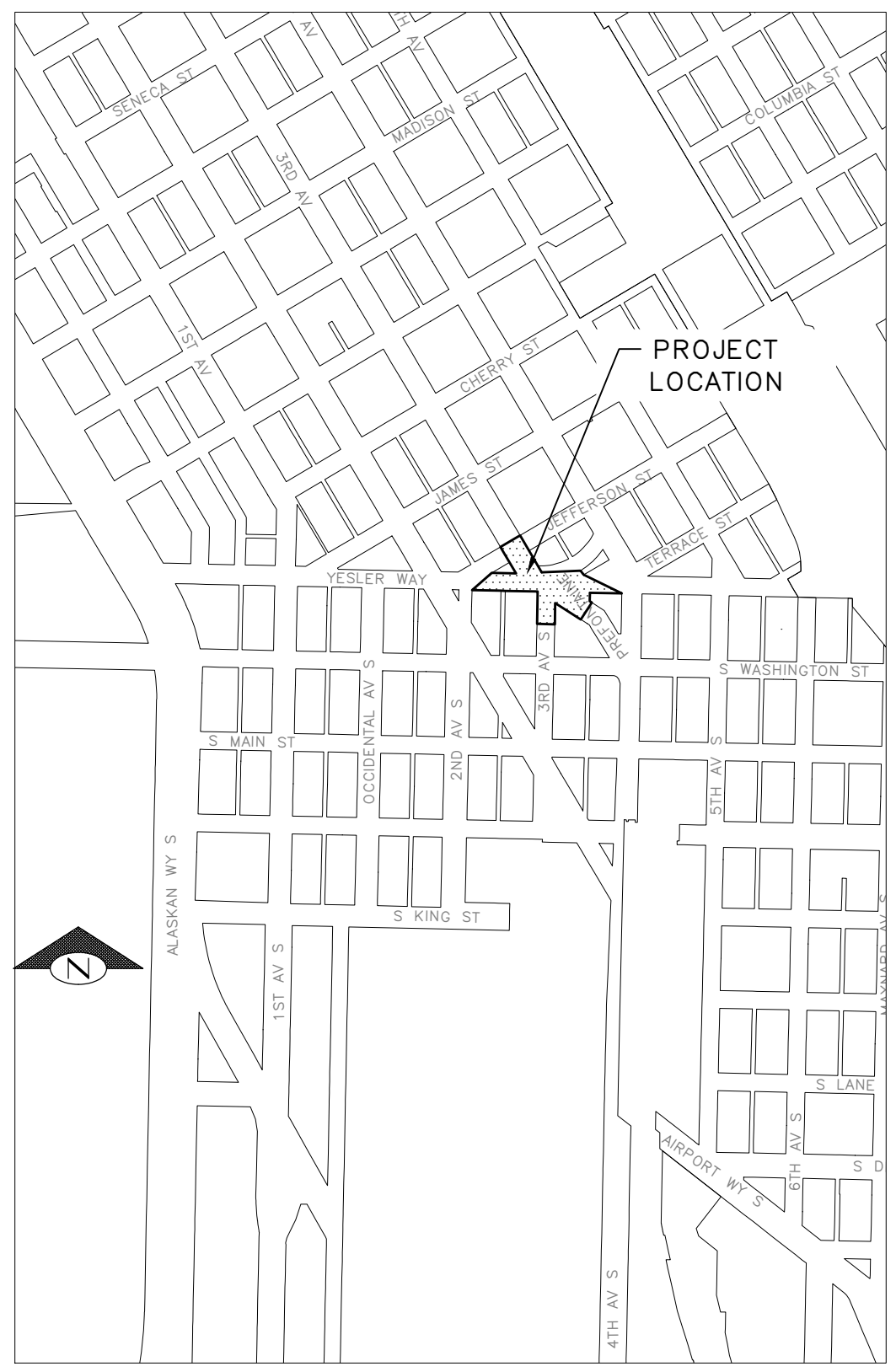
SHEET INDEX

SHEET	DRAWING	SHEET DESCRIPTION
1	CV01	COVER
02	NT01	GENERAL NOTES
03-04	SV01-SV02	SURVEY CONTROL PLANS
05	RW01	RIGHT OF WAY PLAN
06	SP01	SITE PREPARATION PLAN
07	SD01	STORM DRAINAGE PLAN
08	SDPR01	STORM DRAINAGE PROFILES
09	SDDT01	STORM DRAINAGE DETAILS
10	SG01	SIGNAL PLAN
11	SG02	SIGNAL LOOP AND WIRING SCHEDULES
12	LT01	LIGHTING PLAN
13	LT02	LIGHTING SCHEDULES AND DETAILS
14	PV01	PAVING PLAN
15	PVDT01	PAVING DETAILS
16-18	CR01-CR03	CURB RAMP PLANS
19	CH01	CHANNELIZATION AND SIGNING PLAN
20	CHDT01	CHANNELIZATION DETAILS

DETAIL AND SECTION REFERENCING



VICINITY MAP
SCALE: 1" = 1 MILE

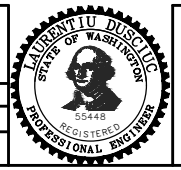


LOCATION MAP
SCALE: 1" = 300'

DATE	MARK	NATURE	MADE	CHK'D	REV'D

P:\SDOT\TRC0487_3rd & Yesler Improvements\A-Plot_Sheets\SSM\GENERAL\C01.dwg
Jan-05-24 2:55pm

APPROVED FOR ADVERTISING FAS PURCHASING AND CONTRACTING DIRECTOR		INITIALS AND DATE	
DESIGNED AG	CHECKED AG	REVIEWED: DES. SDOT	CONST. PROJ. MGR.
SEATTLE, WASHINGTON 20		RECEIVED	
DRAWN MEO	CHECKED JM	REVISED AS BUILT	
BY: FAS PURCHASING AND CONTRACTING DIRECTOR		ALL WORK SHALL BE DONE IN ACCORDANCE WITH THE CITY OF SEATTLE STANDARD PLANS AND SPECIFICATIONS AND OTHER DOCUMENTS CALLED FOR IN SECTION 0-02.3 OF THE PROJECT MANUAL.	



Seattle Department of Transportation
ORDINANCE NO. 126725 PW NO. 2023-027
SCALE: AS NOTED

**3RD AVE AND YESLER WAY
SAFETY IMPROVEMENTS**

PC	TRC0487
CO	TRC0487
VPI #	792-758
CV01	
SHEET 01 OF 20	

COVER SHEET

GENERAL NOTES

UNLESS OTHERWISE NOTED ON THE DRAWINGS:

- ALL WORK MUST CONFORM TO THE 2023 EDITION OF THE CITY OF SEATTLE STANDARD SPECIFICATIONS FOR ROAD, BRIDGE AND MUNICIPAL CONSTRUCTION, THE 2023 EDITION OF THE CITY OF SEATTLE STANDARD PLANS FOR MUNICIPAL CONSTRUCTION, AND THE SEATTLE DEPARTMENT OF TRANSPORTATION DIRECTOR'S RULE 01-2017 FOR STREET AND SIDEWALK PAVEMENT OPENING AND RESTORATION. A COPY OF THESE DOCUMENTS MUST BE ONSITE DURING CONSTRUCTION.
- FOR REQUIREMENTS REGARDING THE PROTECTION AND RESTORATION OF PUBLIC AND PRIVATE PROPERTY SEE SECTIONS 1-07.16 & 1-07.17.
- PERFORM NO WORK WHICH WOULD REMOVE, ADJUST, DESTROY OR OTHERWISE MAKE A SURVEY MONUMENT NO LONGER VISIBLE OR READILY ACCESSIBLE WITHOUT A PERMIT FROM THE WASHINGTON STATE DEPARTMENT OF NATURAL RESOURCES. SEE SECTION 1-07.16(1).
- TREES, SHRUBS AND OTHER PLANT MATERIAL NOT DESIGNATED FOR REMOVAL MUST BE PROTECTED FROM DAMAGE. SEE SECTIONS 1-07.16(2) AND 8-01 FOR REQUIREMENTS REGARDING THE TREE, VEGETATION AND SOIL PROTECTION PLAN.
- THE PROJECT WILL INVOLVE EXCAVATION NEAR CHARGED WATER MAINS. CAST IRON WATER MAINS ARE SUSCEPTIBLE TO VIBRATION. FOR PROTECTION OF THIS INFRASTRUCTURE, SEE SECTIONS 1-07.16(1) AND 2-02.3(3)C. CONTRACTOR MUST NOT REPAIR DAMAGE TO CHARGED WATER MAINS OR SERVICES BUT MUST IMMEDIATELY NOTIFY THE SPU EMERGENCY DISPATCHER AT 206-386-1800.
- RESTORATION OF CONTRACTOR DAMAGE TO EXISTING UTILITIES MUST BE AT THE CONTRACTOR'S EXPENSE. SEE SECTIONS 1-07.13 AND 1-07.16.
- THE CONTRACTOR MUST NOTIFY THE UTILITIES FOR UNDERGROUND UTILITY LOCATIONS BEFORE COMMENCEMENT OF ANY EXCAVATION. ADVANCE NOTIFICATION IS REQUIRED. SEE SECTION 1-07.28.
- FOR NOTIFICATION AND COORDINATION REQUIREMENTS, INCLUDING COMMUNICATION WITH METRO TRANSIT, SEE SECTIONS 1-07.17 AND 1-07.28.
- ALL EXCAVATIONS ADJACENT TO SEATTLE CITY LIGHT POLES OR OTHER FACILITIES (VAULTS, HANDHOLES, ETC.) MUST COMPLY WITH WAC 296-155 PART N, EXCAVATION, TRENCHING AND SHORING. POLE PROTECTION/ SUPPORTING SYSTEMS USED WHILE EXCAVATING MUST COMPLY WITH WAC 296-155-655, GENERAL PROTECTION REQUIREMENTS, ITEM (9) AND MUST NOT AFFECT THE STRUCTURAL INTEGRITY OF POLES WHILE THE SYSTEMS ARE IN PLACE OR AFTER THE SYSTEMS HAVE BEEN REMOVED.
- THE CONTRACTOR IS RESPONSIBLE FOR REFERENCING AND REPLACING ALL SURVEY MONUMENTS THAT MAY BE DISTURBED, DESTROYED OR REMOVED BY THE PROJECT AND 2 WORKING DAYS, PRIOR TO THE WORK, MUST FILE AN APPLICATION FOR PERMIT TO REMOVE OR DESTROY A SURVEY MONUMENT WITH THE WASHINGTON STATE DEPARTMENT OF NATURAL RESOURCES, PURSUANT TO WAC 332-120. THE CONTRACTOR MUST PROVIDE THE ENGINEER AND SPU LAND SURVEY WITH A COPY OF THE APPROVED PERMIT AND COMPLETION REPORT. SEE SECTION 1- 07.28 ITEM 17.
- THE CONTRACTOR MUST ADHERE TO THE WASHINGTON ADMINISTRATIVE CODE GUIDELINES WHEN WORKING WITHIN TEN FEET OF ENERGIZED OVERHEAD TROLLEY LINES. CONTRACTOR MUST CONTACT KCM FOR ALL MODIFICATIONS OR OUTAGE REQUESTS TO OVERHEAD TROLLEY LINES. SEE SECTION 1-07.28 (4). PER WAC 296-155, ALL NON-QUALIFIED PERSONNEL AND EQUIPMENT MUST MAINTAIN 10' CLEARANCES FROM THE CONTACT WIRE. CONTACT LABOR & INDUSTRIES FOR MORE INFORMATION.

STORMWATER POLLUTION PREVENTION NOTES

UNLESS OTHERWISE NOTED ON THE DRAWINGS:

- THE CONTRACTOR MUST PREPARE A CONSTRUCTION STORMWATER AND EROSION CONTROL PLAN (CSECP), A TREE, VEGETATION AND SOIL PROTECTION PLAN (TVSPP) AND A SPILL PLAN (SP) FOR APPROVAL BY THE ENGINEER PRIOR TO CONSTRUCTION. SEE SECTIONS 1-07.15 AND 8-01.

ROADWAY NOTES

UNLESS OTHERWISE NOTED ON THE DRAWINGS:

- PAVEMENT, SIDEWALK AND CURB REMOVALS MUST EXTEND TO EXISTING JOINTS, TO LIMITS IDENTIFIED AS "SAWCUT" ON THE DRAWINGS, OR TO LIMITS DETERMINED BY THE ENGINEER. SEE SECTION 2-02.3.
- ALL JOINTS AT THE MEET LINES OF NEW CONSTRUCTION AND EXISTING SURFACES MUST BE BUTT JOINTS. SEE SECTION 5-04.3(10)B.
- PAVING AROUND INLETS AND CATCH BASINS MUST BE SLOPED TO ESTABLISH A DRAINAGE TRANSITION ZONE PER STANDARD PLAN 260A.
- WMA SURFACE COURSE FOR ROADWAY MUST BE CLASS 1/2", PG58H-22 FOR 10 MILLION ESAL'S.
- IF AN EXISTING WATER VALVE BOX REQUIRES ADJUSTMENT, IT MUST BE DONE BY EXCAVATING THE CASTING AND VERTICALLY ADJUSTING THE TOP SECTION OF THE VALVE BOX. THE FLANGE MUST BE CAST IN TO SURROUNDING PAVEMENT AS SHOWN ON STD PLAN 315. DO NOT USE EXTENSION RINGS. SEE SECTION 7-20.3(1)A.
- CONTRACTOR MUST ADJUST CASTINGS IN ACCORDANCE WITH SECTION 7-20. CASTINGS MUST BE ADJUSTED TO FINISH GRADE PRIOR TO CONSTRUCTION OF FINAL SURFACE COURSE PER SECTION 5-04.3(9)B. WORN OR BROKEN CASTINGS TO BE REPLACED MUST BE REPLACED PRIOR TO INSTALLATION OF THE FINAL SURFACE.

CURB RAMP NOTES:

UNLESS OTHERWISE NOTED ON THE DRAWINGS:

- ALL NEWLY CONSTRUCTED PEDESTRIAN ACCESS ROUTES INCLUDING SIDEWALK AND CURB RAMPS MUST MEET CURRENT ADA STANDARDS AND GUIDELINES (2010 ADA STANDARDS, PROWAG 2011) TO THE MAXIMUM EXTENT FEASIBLE.
- WHERE THE DRAWINGS DENOTE "MEF" FOR CURB RAMP ELEMENTS, THIS DESIGNATION IS FOR THE REFERENCE ONLY AND MUST BE FIELD VERIFIED BY THE ENGINEER. THE CONTRACTOR MUST NOTIFY THE ENGINEER PER SECTION 8-14.3(7) AND ALLOW THE ENGINEER THE OPPORTUNITY TO INSPECT THE CURB RAMP LAYOUT AND DIRECT ADJUSTMENTS AS NECESSARY. EVERY EFFORT WILL BE MADE TO ACHIEVE AN ADA COMPLIANT RAMP.
- THE CONTRACTOR MUST NOTIFY THE ENGINEER IF A CURB RAMP CANNOT BE CONSTRUCTED PER THE DRAWINGS, RESULTING IN A NON-COMPLIANT SLOPES AN/OR DIMENSIONS. PRIOR TO INSTALLING THE CURB RAMP, THE ENGINEER MUST APPROVE THE CURB RAMP LAYOUT.
- PEDESTRIAN ACCESS THROUGH THE PROJECT MUST BE MAINTAINED IN COMPLIANCE WITH SDOT PEDESTRIAN MOBILITY IN AND AROUND WORK ZONES, DIRECTOR'S RULE 10-2015, AND SDOT 2018 TRAFFIC CONTROL MANUAL FOR IN-STREET WORK.
- FOR ASSET MANAGEMENT PURPOSES, THIS PROJECT INCLUDES THE FOLLOWING:

NEW CURB RAMPS	1
REBUILT CURB RAMPS	8
PROJECT TOTAL	9

SIGNAL NOTES

UNLESS OTHERWISE NOTED ON THE DRAWINGS:

- THE CONTRACTOR MUST IMMEDIATELY REPORT ANY DAMAGE TO THE TRAFFIC SIGNAL SYSTEM, INCLUDING CONDUIT AND THE DETECTOR LOOPS. SEE SECTION 1-07.28 NOTE 16.

SIGNING & CHANNELIZATION NOTES

UNLESS OTHERWISE NOTED ON THE DRAWINGS:

- TO ORDER SDOT PROVIDED SIGNS, OR TO COORDINATE SDOT'S INSTALLATION OF SIGNS, SEE SECTION 8-21.3(1). ADVANCE NOTIFICATION IS REQUIRED. CONTACT SDOT SIGNS AND MARKING SHOP AT (206)233-7104.
- FOR REQUIREMENTS ON LAYOUT AND VERIFICATION OF CHANNELIZATION FEATURES, SEE SECTION 8-22.3(1). ADVANCE NOTIFICATION IS REQUIRED.
- FOR SIGNING AND STRIPING DETAILS NOT SHOWN IN THESE DRAWINGS, SEE 600 SERIES AND 700 SERIES STANDARD PLANS.
- FOR PAID PARKING SIGN CHANGES, PLEASE CONTACT DOT_PAYSTATIONS@SEATTLE.GOV WITH 10 BUSINESS DAYS NOTICE.

DRAINAGE NOTES

UNLESS OTHERWISE NOTED ON THE DRAWINGS:

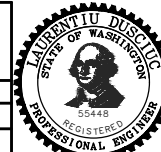
- FOR INLET CONNECTION BEND AND SLOPE RESTRICTIONS, SEE SECTION 7-08.3(5).
- WHEN CONNECTING TO EXISTING SEWER AND DRAINAGE LINES, THE CONTRACTOR MUST VERIFY INVERT ELEVATIONS PRIOR TO CONSTRUCTION. DISCREPANCIES IN INVERT ELEVATIONS MUST BE IMMEDIATELY BROUGHT TO THE ATTENTION OF THE ENGINEER.
- BEDDING FOR INLET CONNECTION AND CATCH BASIN CONNECTION PIPES MUST BE CLASS B. SEE STD PLAN 285. BACKFILL MUST BE MINERAL AGGREGATE TYPE 17.
- ALL INLET AND CATCH BASIN PIPE RECONNECTIONS MUST USE FLEXIBLE GASKETED COUPLINGS WITH STAINLESS STEEL SHIELDS PER SPECIFICATION 9-05.18.
- SEATTLE PUBLIC UTILITIES (SPU) APPROVAL IS REQUIRED FOR ALL PROPOSED NEW CATCH BASINS, INLETS AND PIPES PRIOR TO FINAL SURFACE RESTORATION. CONTACT THE ENGINEER, 48 HOURS IN ADVANCE.
- DUCTILE IRON PIPE MUST BE ANSI A21.51 CLASS 50 WITH PUSH-ON JOINTS. FITTINGS FOR DUCTILE IRON PIPE MUST BE PER ANSI A21.10 OR ANSI A21.53 WITH PUSH-ON JOINTS. GLANDS ON MECHANICAL JOINT PIPE AND FITTINGS MUST BE DUCTILE. SEE SECTION 9-05.3.

GENERAL NOTES

3RD AVE AND YESLER WAY
SAFETY IMPROVEMENTS

PC	TRC0487
CO	TRC0487
VPI #	792-758
NT01	
SHEET	02 OF 20

Seattle Department of Transportation
ORDINANCE NO. 126725 PW NO. 2023-027
SCALE: NONE



INITIALS AND DATE		INITIALS AND DATE	
DESIGNED JN		REVIEWED: DES. SDOT	CONST. PROJ. MGR.
CHECKED JM		RECEIVED	REVISED AS BUILT
ALL WORK SHALL BE DONE IN ACCORDANCE WITH THE CITY OF SEATTLE STANDARD PLANS AND SPECIFICATIONS AND OTHER DOCUMENTS CALLED FOR IN SECTION 0-02.3 OF THE PROJECT MANUAL.			

APPROVED FOR ADVERTISING FAS PURCHASING AND CONTRACTING DIRECTOR
SEATTLE, WASHINGTON 20
BY: FAS PURCHASING AND CONTRACTING DIRECTOR

VAULT SERIAL NO.	DATE	MARK	NATURE	MADE	CHK'D	REV'D
39283			REVISIONS			

P:\SDOT\TRC\TRC0487_3rd & Yesler Improvements\A-Pilot Sheets\SSM\GENERAL\NT01.dwg
Jan-05-24 2:55pm

PROJECT NUMBER: NS01007 LSTR_2023_G419
 PROJECT NAME: 3RD AVE S JACKSON TO JAMES
 SURVEY PROJECT FOLDER NUMBER: 261-1291
 REFERENCE DOCUMENTS: 265-552
 DATE: 5/10/2023
 PRJ. SURVEYOR: G. BROOKS
 PRIMARY CREW: N. RASMUSSEN
 OFFICE TECH: E. JOHNSON
 R/W CREATED BY: G. BROOKS
 GEOREGISTRATION NOTES:
 NW 1/4 SEC 5 T24N R04E, W.M.

SURVEY MONUMENTATION:
 WHEN PROPOSED CONSTRUCTION, CHANGES TO PROPOSED CONSTRUCTION, OR OTHER ACTIVITY REQUIRES REMOVAL OR DESTRUCTION OF A SURVEY MONUMENT, AT LEAST 2 WORKING DAYS PRIOR TO THIS WORK, THE CONTRACTOR MUST PROVIDE THE ENGINEER WITH A COPY THE DEPARTMENT OF NATURAL RESOURCES (DNR) PERMIT AUTHORIZING THE REMOVAL OR DESTRUCTION OF THE SURVEY MONUMENT PER WAC 332-120. REMOVAL OR DESTRUCTION IS DEFINED TO MEAN THE PHYSICAL DISTURBANCE OR COVERING OF A SURVEY MONUMENT SUCH THAT THE SURVEY POINT IS NO LONGER VISIBLE OR READILY ACCESSIBLE. BEFORE PHYSICAL COMPLETION, THE CONTRACTOR MUST PROVIDE THE ENGINEER A COPY OF THE DNR FINAL REPORT FORM WITH EVIDENCE THAT EACH SURVEY MONUMENT HAS BEEN REPLACED OR RESTORED TO ITS PRE-CONSTRUCTION POSITION. FOR PERMITTING INFORMATION SEE [HTTP://WWW.DNR.WA.GOV/PUBLICATIONS/ENG_PL50_REMOVE_DESTROY_MONUMENT.ZIP](http://www.dnr.wa.gov/PUBLICATIONS/ENG_PL50_REMOVE_DESTROY_MONUMENT.ZIP) OR CALL DNR AT (360) 902-1230. AT THE TIME THE PERMITS ARE PROVIDED TO THE ENGINEER, THE CONTRACTOR MUST FORWARD A COPY OF THIS INITIAL DNR PERMIT WITH AUTHORIZING SIGNATURES AND FINAL REPORT FORM TO THE LAND SURVEY MANAGER, SEATTLE PUBLIC UTILITIES, PHYSICAL ADDRESS: SEATTLE MUNICIPAL TOWER, 700 FIFTH AVENUE, OR MAILING ADDRESS: PO BOX 34018, SEATTLE, WA 98124-4018.

NOTES:
 FIELD MEASUREMENTS FOR THIS SURVEY PERFORMED WITH A 3" TRIMBLE TOTAL STATION USING TRAVERSE METHODS THAT MEET OR EXCEED ACCURACY REQUIREMENTS CONTAINED IN WAC 332.130.090. THIS SURVEY WAS CONDUCTED WITHOUT THE BENEFIT OF A CURRENT PRICE REPORT AND THEREFORE DOES NOT CLAIM TO SHOW ALL EASEMENTS OR RESTRICTIONS OF RECORD, IF ANY.

CP#210:
 SET MINI MAG IN THE SOUTHERN QUAD OF PREFONTAINE PL S/YESLER WAY/ 3RD AVE S LOCATED AT THE PT HEADING EAST ON PREFONTAINE PL S. 6.5' NORTH OF INFORMATIONAL SIGN IN SEAM OF WALK/CURB. ELEV=64.84'
BM 3756-0801:
 3 INCH BRASS CAP, STAMPED "CITY OF SEATTLE 3756-0801", SET ON THE SOUTH SIDE OF S. JACKSON ST. ON THE PROJECTED CL FOR 3RD AVE S. ELEV=35.71' (SPU CONTROL POINT #125)

HORIZONTAL DATUM: NAD83-2011 EPOCH 2010.00 DERIVED FROM THE WSRN AND NGS CORS

VERTICAL DATUM: NAVD88 DERIVED FROM THE WSRN AND NGS CORS USING GEOID 12B

BASIS OF BEARING: WASHINGTON STATE PLANE COORDINATE SYSTEM, NORTH ZONE

VERTICAL BENCHMARKS: CP#210

PROJECT FIELD BOOK:
 #4125 POS:62-69

PROJECT SCALE FACTOR: 0.999982596

CONVERGENCE ANGLE: -1'06"51.9"

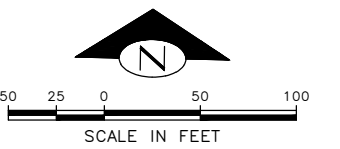
PROJECT COMBINED GRID FACTOR: 0.999983208

SCALE FACTOR BASIS:
 NORTHING: 223038.87 EASTING: 1271165.68

Point #	Northing	Easting	Description
1	222469.96	1270801.04	MIC 40782501
52	223733.11	1270705.53	MIC 40483701
55	223305.58	1270584.25	MIC 40483703
56	223080.77	1271091.64	MIC 40483801
57	223079.82	1271136.24	MIC 40483802
58	222773.93	1271129.55	MIC 40483803
59	223086.84	1270814.61	MIC 40483804
61	222780.86	1270807.98	MIC 40483901
71	223369.97	1271294.65	MIC 39345602
72	223107.58	1271450.23	MIC 39345603
101	222449.43	1270949.73	MAG 40782401
103	222495.93	1271098.61	MAG 41022101
121	222767.20	1271432.74	MIC 41470901
122	222766.98	1271451.56	MIC 41470902
123	222398.49	1271121.12	MIC 41470903
124	222463.61	1271079.40	MC
126	222186.60	1271116.12	BC 41470906
127	222457.53	1271444.75	MIC 41470907
128	222778.67	1270896.09	MC
129	223070.28	1271136.18	MC

Point #	Northing	Easting	Description
130	223072.89	1271458.02	MIC 41471001
131	223633.15	1271138.88	MIC 41471002

Point #	Northing	Easting	Elevation	Description
101	222449.43	1270949.73	29.18	MAG 40782401
103	222495.93	1271098.61	31.08	MAG 41022101
125	222136.62	1271114.98	35.71	BC 41470905
210	223038.85	1271165.71	64.84	MAG 41256903
212	223101.13	1271054.22	82.90	MAG 41256901
221	223088.58	1270976.85	57.16	SCRB 41256904
560	222799.39	1271102.55	34.73	MAG

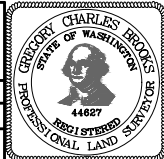


MATCH LINE - SEE SHEET SV02

SURVEY CONTROL PLAN 01

APPROVED FOR ADVERTISING
 FAS PURCHASING AND CONTRACTING DIRECTOR
 SEATTLE, WASHINGTON 20
 BY:
 FAS PURCHASING AND CONTRACTING DIRECTOR

INITIALS AND DATE
 DESIGNED JN
 CHECKED JM
 DRAWN MEO
 CHECKED JM
 RECEIVED
 REVISOR AS BUILT
 ALL WORK SHALL BE DONE IN ACCORDANCE WITH THE CITY OF SEATTLE STANDARD PLANS AND SPECIFICATIONS AND OTHER DOCUMENTS CALLED FOR IN SECTION 0-02.3 OF THE PROJECT MANUAL.

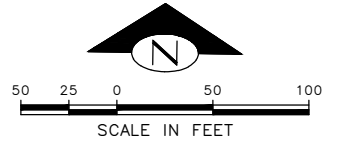


Seattle Department of Transportation
 ORDINANCE NO. 126725 PW NO. 2023-027
 SCALE: NONE

3RD AVE AND YESLER WAY SAFETY IMPROVEMENTS

PC TRC0487
 CO TRC0487
 VPI # 792-758
SV01
 SHEET 03 OF 20

MATCH LINE - SEE SHEET SV01



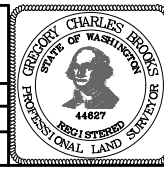
SURVEY CONTROL PLAN 02

VAULT SERIAL NO.	DATE	MARK	NATURE	MADE	CHK'D	REV'D
39283						

P:\SDD\TRC0487_3rd & Yesler Improvements\A-Plot Sheets\TRC0487_P-SURV.dwg
Jan-05-24 2:56pm

APPROVED FOR ADVERTISING
FAS PURCHASING AND CONTRACTING DIRECTOR
SEATTLE, WASHINGTON 20
BY:
FAS PURCHASING AND CONTRACTING DIRECTOR

INITIALS AND DATE		INITIALS AND DATE	
DESIGNED JN	CHECKED JM	REVIEWED: DES. SDOT	CONST. PROJ. MGR.
DRAWN MEO	CHECKED JM	RECEIVED	REVISED AS BUILT
ALL WORK SHALL BE DONE IN ACCORDANCE WITH THE CITY OF SEATTLE STANDARD PLANS AND SPECIFICATIONS AND OTHER DOCUMENTS CALLED FOR IN SECTION 0-2.3 OF THE PROJECT MANUAL.			

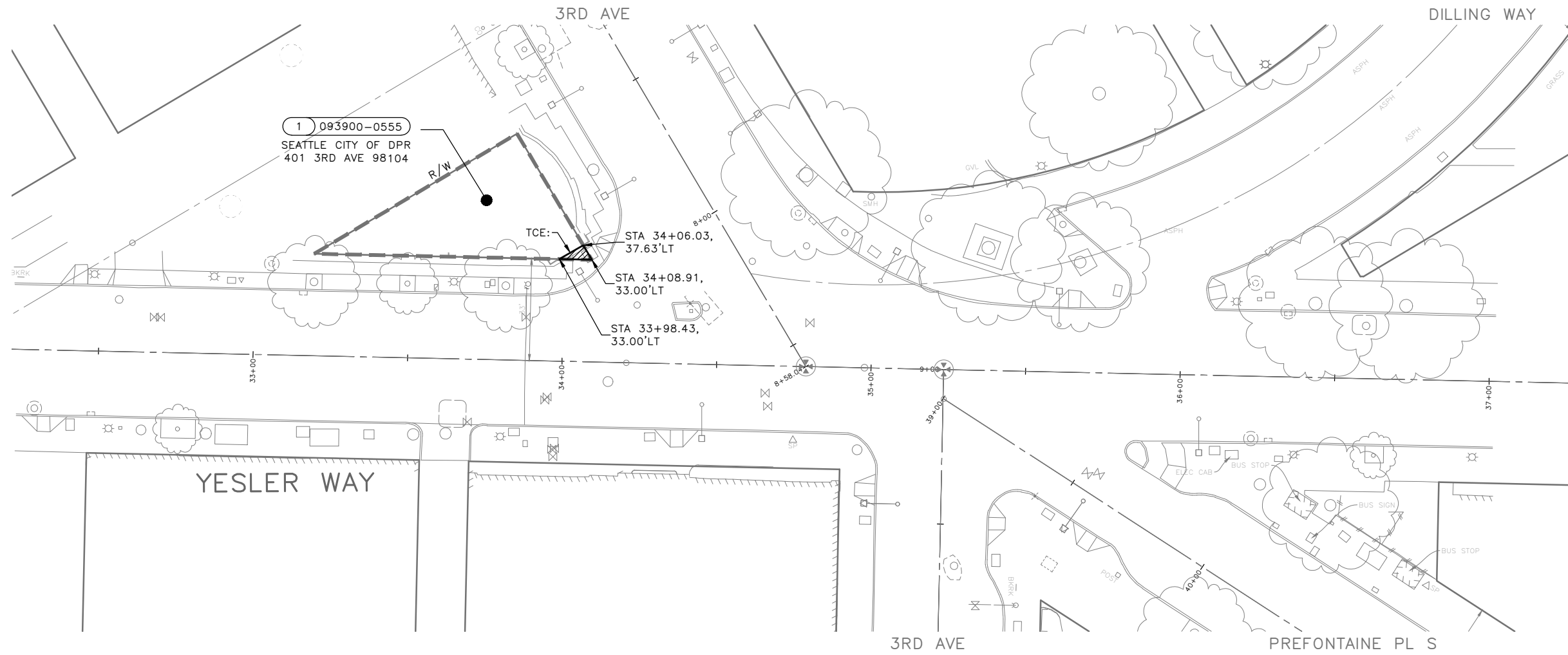


Seattle Department of Transportation
ORDINANCE NO. 126725 PW NO. 2023-027
SCALE: NONE

3RD AVE AND YESLER WAY SAFETY IMPROVEMENTS

PC	TRC0487
CO	TRC0487
VPI #	792-758
SV02	
SHEET	04 OF 20

NW SEC 05, TWN 24, R 04



LEGEND:

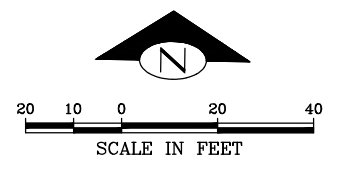
- COMPENSABLE TEMPORARY CONSTRUCTION EASEMENT
- PERMANENT EASEMENT
- R/W (RIGHT OF WAY LINE)
- (PROPERTY LOT LINE)
- CL (CENTERLINE)
- PROJECT PARCEL NUMBER
- TAX PARCEL NUMBER

DATE	MARK	NATURE	MADE	CHK'D	REV'D

Vault Serial No. 39283

ROW TABLE

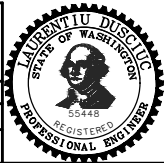
PROJECT PARCEL NUMBER	SHEET	PARCEL NUMBER	PARCEL ADDRESS	OWNERSHIP (TAXPAYER)	OWNERSHIP TOTAL AREA (SF)	PERMIT AREA (SF)	REMINDER (SF)
1	RW1	093900-0555	401 3RD AVE 98104	SEATTLE CITY DPR	2,277sqft	24sqft	2,277sqft



RIGHT OF WAY PLAN

P:\SDOT\TRC0487_3rd & Yesler Improvements\A-Plot Sheets\TRC0487_P-RWAY.dwg
Jan-05-24 2:58pm

APPROVED FOR ADVERTISING FAS PURCHASING AND CONTRACTING DIRECTOR SEATTLE, WASHINGTON 20 BY: FAS PURCHASING AND CONTRACTING DIRECTOR		INITIALS AND DATE DESIGNED: _____ CHECKED: _____ DRAWN: _____ CHECKED: _____	INITIALS AND DATE REVIEWED: _____ DES. CONST. _____ SDOT PROJ. MGR. _____ RECEIVED: _____ REVISED AS BUILT: _____
---	--	--	--

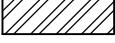

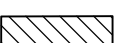
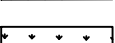
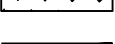
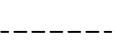
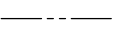
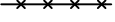


Seattle Department of Transportation
 ORDINANCE NO. 126725 PW NO. 2023-027
 SCALE: AS NOTED

**3RD AVE AND YESLER WAY
 SAFETY IMPROVEMENTS**

PC	TRC0487
CO	TRC0487
VPI #	792-758
RW01	
SHEET 05 OF 20	

SITE PREPARATION LEGEND:

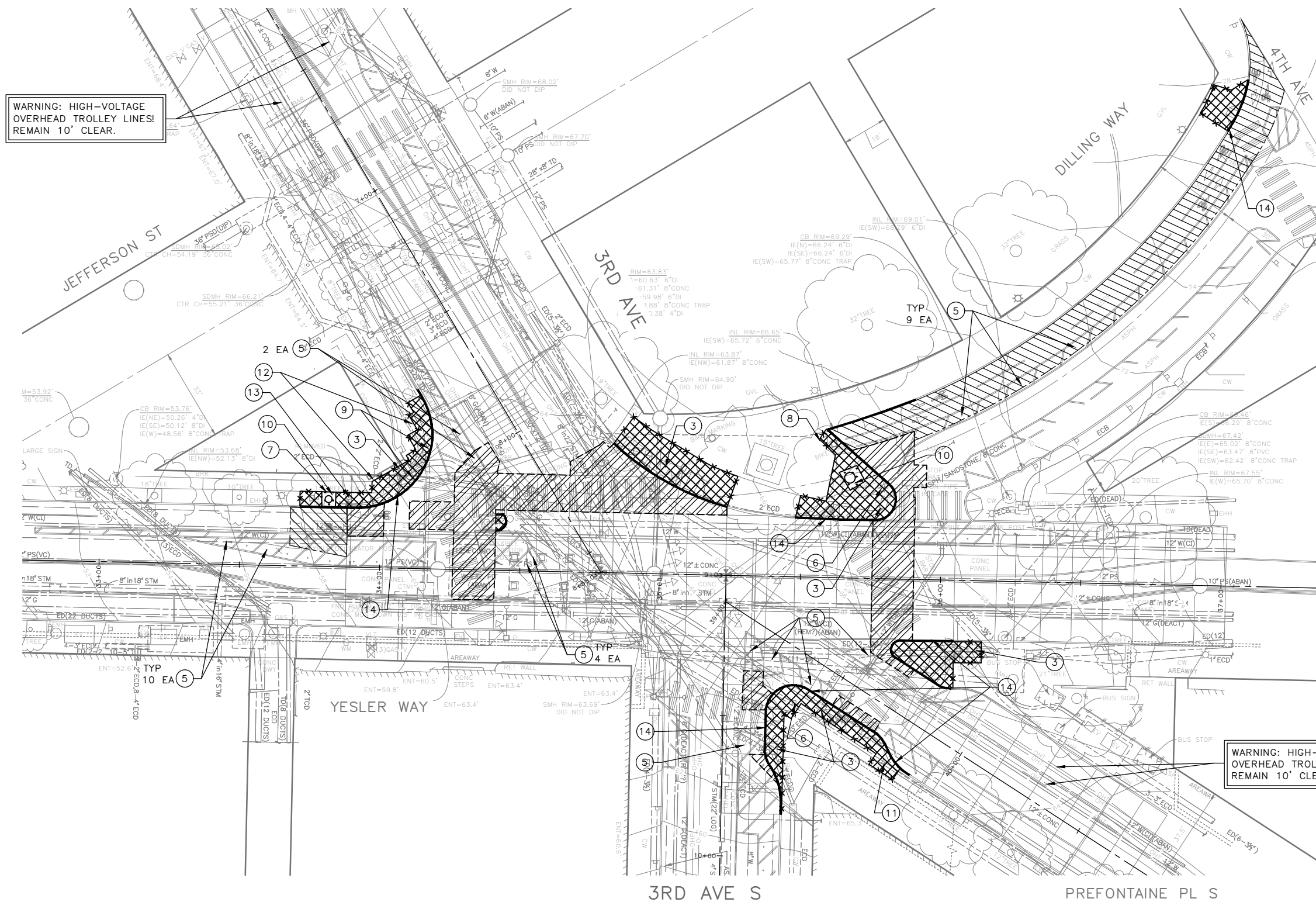
-  REMOVE PAVEMENT
-  REMOVE SIDEWALK
-  REMOVE OVERLAY
-  CLEAR AND GRUB, AND COMMON EX.
-  REMOVE CURB (SEE NOTE 14)
-  SAWCUT PAVEMENT, FULL DEPTH
-  SAWCUT ASPHALT OVERLAY
-  SAWCUT SIDEWALK, FULL DEPTH

SITE PREPARATION NOTES:

- ① ADJUST EXISTING MH, CB OR VC. SEE SECTION 7-20.3(1)
- ② ADJUST EXISTING VALVE BOX
- ③ ADJUST EXISTING HANDHOLE
- ④ REMOVE CURB
- ⑤ REMOVE PLASTIC CURB AND POST
- ⑥ RELOCATE SIGN (SEE CH SHEET)
- ⑦ REMOVE TREE GRATE
- ⑧ REMOVE MMA DETECTABLE STRIP
- ⑨ REMOVE AND RELOCATE BRONZE STREET NAME INLAYS. RESET INLAYS AT NEW LOCATION AS DIRECTED BY THE ENGINEER. SEE PV01.
- ⑩ TREE ROOT PRUNING. SEE SECTION 8-02.3(23)
- ⑪ RELOCATE NEWSPAPER BOX (BY OTHERS)
- ⑫ EXISTING BRICK SIDEWALK PAVING TO REMAIN. PROTECT IN PLACE.
- ⑬ REMOVE ABANDONED FH BASE AND VALVE (BY SPU) INSTALL NEW FH AND VALVE (BY SPU)
- ⑭ SAWCUT 3" MAX FROM FACE OF CURB FOR REMOVAL OF 410C CURB WHEN NOT ADJACENT TO PAVEMENT REMOVAL (SEE DETAIL ON PVDT1)

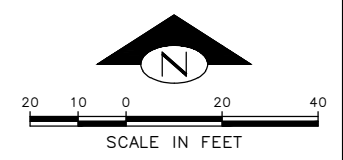
GENERAL NOTES:

1. PROTECT EXISTING UTILITIES UNLESS OTHERWISE NOTED. SEE STANDARD SPEC 1-07.17.
2. INSTALL INLET PROTECTION ON ALL NEW AND EXISTING INLETS AND CATCH BASINS UNLESS OTHERWISE SPECIFIED. SEE SECTION 8-01.3(12)B.
3. LIMITS OF PAVEMENT REMOVAL AREAS SHALL BE AS DIRECTED BY THE ENGINEER.



WARNING: HIGH-VOLTAGE OVERHEAD TROLLEY LINES! REMAIN 10' CLEAR.

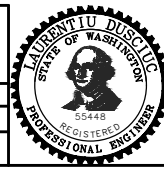
WARNING: HIGH-VOLTAGE OVERHEAD TROLLEY LINES! REMAIN 10' CLEAR.



SITE PREPARATION PLAN

3RD AVE AND YESLER WAY SAFETY IMPROVEMENTS

APPROVED FOR ADVERTISING FAS PURCHASING AND CONTRACTING DIRECTOR		INITIALS AND DATE		INITIALS AND DATE	
SEATTLE, WASHINGTON 20		DESIGNED JN	REVIEWED: DES. SDOT	CONST. PROJ. MGR.	
BY: FAS PURCHASING AND CONTRACTING DIRECTOR		CHECKED JM	RECEIVED	REVISED AS BUILT	
		ALL WORK SHALL BE DONE IN ACCORDANCE WITH THE CITY OF SEATTLE STANDARD PLANS AND SPECIFICATIONS AND OTHER DOCUMENTS CALLED FOR IN SECTION 0-02.3 OF THE PROJECT MANUAL.			



Seattle Department of Transportation
 ORDINANCE NO. 126725 PW NO. 2023-027
 SCALE: 1"=20'

PC	TRC0487
CO	TRC0487
VPI #	792-758
SP01	
SHEET 06 OF 20	

Vault Serial No.	39283
Date	Mark
Nature	Revisions
MADE	CHK'D
REV'D	

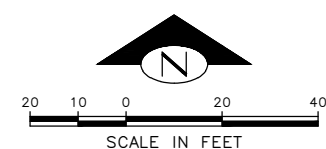
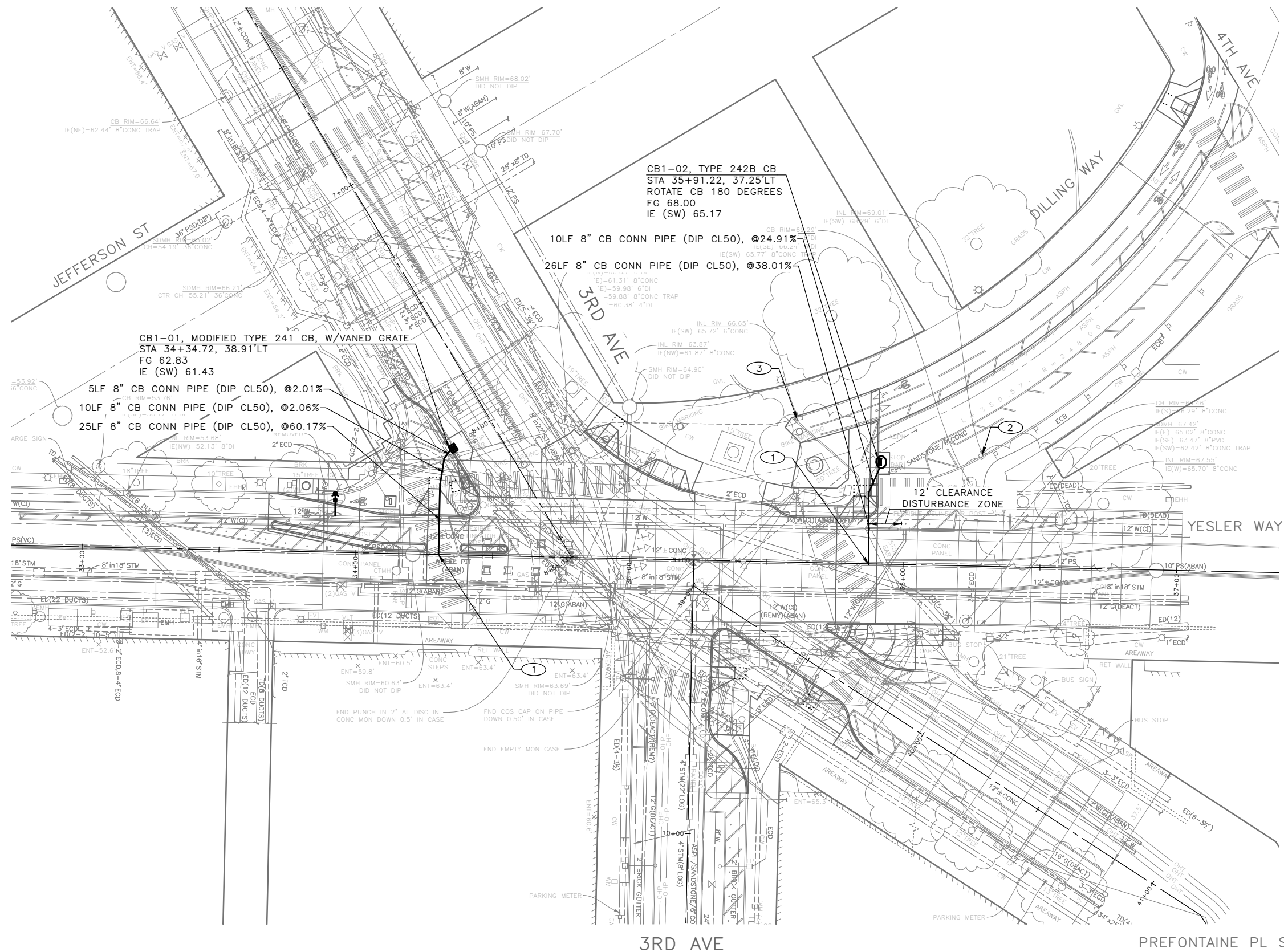
P:\SDOT\TRC0487_3rd & Yesler Improvements\A-Plot Sheets\SSM\Site Preparation Plan\SP01.dwg
 Jan-05-24, 2:59pm

GENERAL NOTES:

1. INLET AND CATCH BASIN STATIONS AND OFFSETS ARE MEASURED TO THE CENTER OF GRATE AT THE FACE OF CURB (FG) PER STD PLAN 260A AND 260B UNLESS OTHERWISE NOTED ON THE DRAWINGS.
2. RIM ELEV. 1" BELOW FG ELEV. PER STD PLAN 260.
3. TAPPED CONNECTIONS TO MAINS OR STRUCTURES 24" OR LESS SHALL BE PERFORMED BY SEATTLE PUBLIC UTILITIES (SPU). TO SCHEDULE CORE TAPS, CONTACT SPU AT (206)615-0511 A MINIMUM OF 48 HOURS IN ADVANCE.
4. IF ROOTS ARE ENCOUNTERED, REFER TO STD SPEC 8-02.3(7)A FOR PRUNING PROCEDURE.
5. INSTALL POLYETHYLENE FOAM PROTECTION IF LESS THAN 6" CLEARANCE BETWEEN UTILITIES.
6. REFER TO SHEET NT1 FOR ADDITIONAL DRAINAGE NOTES.
7. ALL SPU INFRASTRUCTURE SHALL BE PROTECTED IN PLACE. REFER TO SECTION 1-07.16 AND 1-07.17.

CONSTRUCTION NOTES:

- 1 CORE TAP CONNECTION TO BE PERFORMED BY SPU.
- 2 REPLACE CASTING WITH TYPE 266 VANED GRATE.
- 3 REMOVE INLET & ABANDON AND FILL PIPE. REMOVE PIPE AS NECESSARY FOR NEW PIPE.

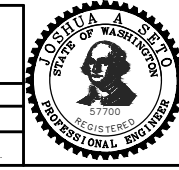


STORM DRAIN PLAN

**3RD AVE AND YESLER WAY
SAFETY IMPROVEMENTS**

PC	TRC0487
CO	TRC0487
VPI #	792-758
SD01	
SHEET 07 OF 20	

Seattle Department of Transportation
 ORDINANCE NO. 126725 PW NO. 2023-027
 SCALE: 1"=20'



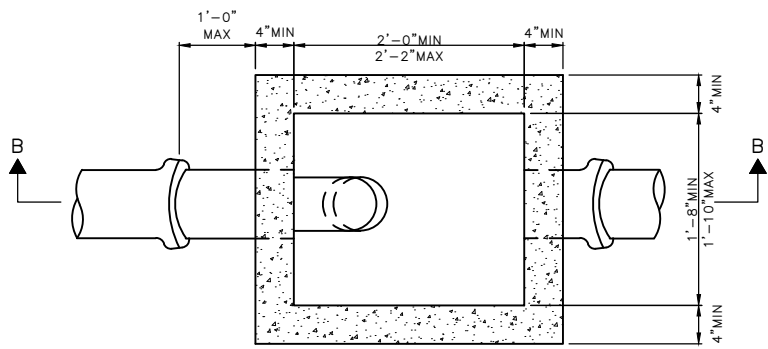
INITIALS AND DATE		INITIALS AND DATE	
DESIGNED JN	CHECKED JM	REVIEWED: DES. SDOT	CONST. PROJ. MGR.
DRAWN MEO		RECEIVED	
CHECKED JM		REVISED AS BUILT	
ALL WORK SHALL BE DONE IN ACCORDANCE WITH THE CITY OF SEATTLE STANDARD PLANS AND SPECIFICATIONS AND OTHER DOCUMENTS CALLED FOR IN SECTION 0-02.3 OF THE PROJECT MANUAL.			

APPROVED FOR ADVERTISING FAS PURCHASING AND CONTRACTING DIRECTOR	
SEATTLE, WASHINGTON 20	
BY: FAS PURCHASING AND CONTRACTING DIRECTOR	

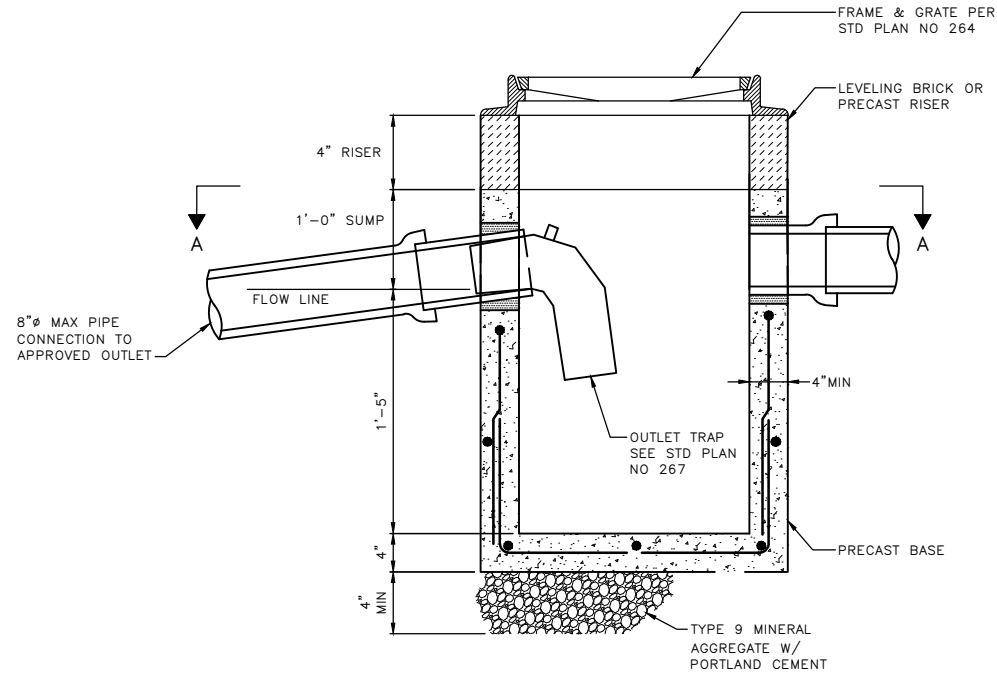
VAULT SERIAL NO.	DATE	MARK	NATURE	MADE	CHK'D	REV'D
39283						

P:\SDD\CPA\TRC0487_3rd & Yesler Improvements\A-Plot_Sheets\TRC0487_P-STORM.dwg
 Jan-05-24, 3:01pm

VAULT SERIAL NO.	DATE	MARK	NATURE	MADE	CHK'D	REV'D
39283						



SECTION A-A



SECTION B-B

MODIFIED TYPE 241CB
W/VANED GRATE

STORM DRAIN DETAILS

P:\SDOT\TRC0487_3rd & Yesler Improvements\A-Plot Sheets\TRC0487_P-STORM DETAILS.dwg
Jan-05-24 3:03pm

APPROVED FOR ADVERTISING FAS PURCHASING AND CONTRACTING DIRECTOR SEATTLE, WASHINGTON 20	INITIALS AND DATE DESIGNED CHECKED	INITIALS AND DATE REVIEWED: DES. CONST. SDOT PROJ. MGR. RECEIVED REVISED AS BUILT
BY: FAS PURCHASING AND CONTRACTING DIRECTOR	ALL WORK SHALL BE DONE IN ACCORDANCE WITH THE CITY OF SEATTLE STANDARD PLANS AND SPECIFICATIONS AND OTHER DOCUMENTS CALLED FOR IN SECTION 0-02.3 OF THE PROJECT MANUAL.	



Seattle Department of Transportation
ORDINANCE NO. 126725 PW NO. 2023-027
SCALE: NOT TO SCALE

3RD AVE AND YESLER WAY
SAFETY IMPROVEMENTS

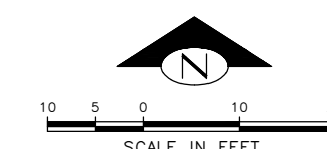
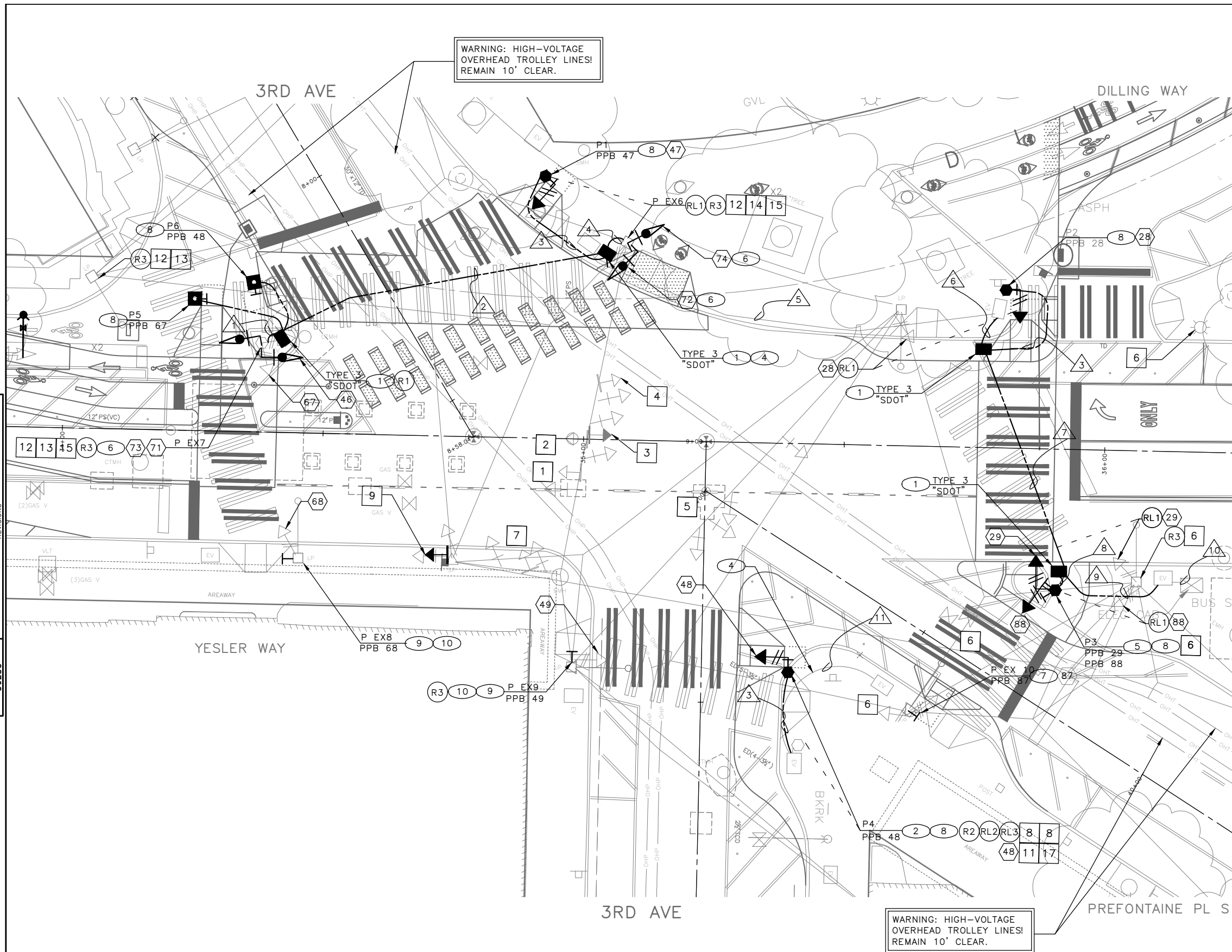
JOB #	PC TRC0487
	CO TRC0487
VPI #	792-758
SDDT01	
SHEET	09 OF 20

CONSTRUCTION NOTES
INSTALL:

- 1 HANDHOLE, TYPE SHOWN ON DRAWINGS.
- 2 PEDESTAL POLE AND FOUNDATION. REF TO POLE SCHEDULE.
- 3 LUMINAIRE, POLE AND FOUNDATION. REF TO LT SHEETS
- 4 INTERCEPT EX PEDESTAL CONDUIT WITH NEW CONDUIT FROM NEW PEDESTAL
- 5 PEDESTAL POLE AND FOUNDATION. POLE MUST BE INSTALLED MIN 12" FROM EDGE OF RAMP. REF TO SCHEDULES
- 6 BICYCLE SIGNAL HEAD ON EX PEDESTAL POLE. REF TO SCHEDULES
- 7 APS PUSHBUTTON ON EX POLE. REFER TO SCHEDULES
- 8 APS PUSHBUTTON ON NEW POLE/POST. REFER TO SCHEDULES
- 9 APS PUSHBUTTON ON EX POLE. WIRE APS TO EX PED HEAD ON SAME POLE.
- 10 PROVIDE EXTENSION MOUNTING TO EXTEND PUSHBUTTON ASSEMBLY TO PEDESTRIAN REACH RANGE OF 10 IN.

REMOVAL/RELOCATE:

- R1 REMOVE EXISTING HANDHOLE.
- R2 REMOVE EX PEDESTAL POLE FOUNDATION
- R3 REMOVE EX SIGN(S). REFER TO SCHEDULE.
- RL1 RELOCATE EX PEDESTRIAN SIGNAL HEAD.
- RL2 RELOCATE EX PEDESTAL POLE.
- RL3 RELOCATE EX PEDESTRIAN SIGNAL HEAD. USE EX WIRING



SIGNAL PLAN

**3RD AVE AND YESLER WAY
SAFETY IMPROVEMENTS**

PC	TRC0487
CO	TRC0487
VPI #	792-758
SG01	
SHEET 10 OF 20	

APPROVED FOR ADVERTISING FAS PURCHASING AND CONTRACTING DIRECTOR		INITIALS AND DATE		INITIALS AND DATE	
SEATTLE, WASHINGTON 20		DESIGNED JN	REVIEWED DES. SDOT	CONST. PROJ. MGR.	
BY: FAS PURCHASING AND CONTRACTING DIRECTOR		CHECKED JM	RECEIVED	REVISED AS BUILT	
FAS PURCHASING AND CONTRACTING DIRECTOR		ALL WORK SHALL BE DONE IN ACCORDANCE WITH THE CITY OF SEATTLE STANDARD PLANS AND SPECIFICATIONS AND OTHER DOCUMENTS CALLED FOR IN SECTION G-02.3 OF THE PROJECT MANUAL.			



Seattle Department of Transportation
ORDINANCE NO. 126725 PW NO. 2023-027
SCALE: 1"=10'

Vault Serial No.	39283
Date	Mark
Nature	Revisions
MADE	CHK'D
REV'D	

P:\SDOT\TRC0487_3rd & Yesler Improvements\A-Plan Sheets\TRC0487_P-SIG.dwg
Jan-05-24 3:04pm

POLE/PEDESTAL SCHEDULE

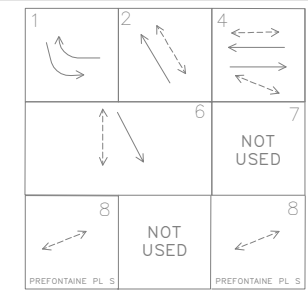
POLE NO.	STATION/LOCATION AND OFFSET	POLE TYPE	LENGTH (FT)	FOUNDATION TYPE
P1	34+91.6, 50.3' LT	PEDESTAL	10	STD PLAN NO. 524
P2	35+80.4, 30.4' LT	PEDESTAL	10	STD PLAN NO. 524
P3	35+91.1, 27.2' RT	PEDESTAL	14	STD PLAN NO. 524
P4	35+40.1, 43.9' RT	PEDESTAL	10	STD PLAN NO. 524
P5	34+24.7, 25.2' LT	POST		STD PLAN 522
P6	34+36.1, 28.8' LT	POST		STD PLAN 522
P EX6	EX	EX STRAIN	EX	EX
P EX7	EX	EX PEDESTAL	EX	EX
P EX8	EX	EX STRAIN	EX	EX
P EX9	EX	EX STRAIN	EX	EX
P EX10	EX	EX STRAIN	EX	EX

WIRING SCHEDULE

RUN NO	CONDUIT SIZE	EXISTING CONDUCTORS	PED HEADS	BICYCLE HEAD	PPB	GROUND	COMMENTS
1	1-2" SDOT		2-3C	1-5C		1-#6	INTERCEPT EX 2" CONDUIT TO POLE
2	3" SDOT	-	2-3C	1-5C		1-#6	SPARE
	2- 3" SDOT	-					
3	1-2" SDOT	-	1-3C		1-PR(SH)	1-#6	
4	1-2" SDOT	-		1-5C		1-#6	INTERCEPT EX 2" CONDUIT TO POLE
5	EX 3"		3-3C	2-5C		1-#6	
6	1-3" SDOT	-	1-3C	2-5C		1-#6	INTERCEPT EX HH
	3" SDOT		2-3C	2-5C		1-#6	
7	3" SDOT		2-3C	2-5C		1-#6	SPARE
	2- 3" SDOT						
8	1-2" SDOT		2-3C			1-#6	
9	1-3" SDOT		5-3C	2-5C		1-#6	
10	EX 3"	-	5-3C	2-5C		1-#6	
11	EX 2"	1-3C, 1-#8G	1-3C			1-#6	

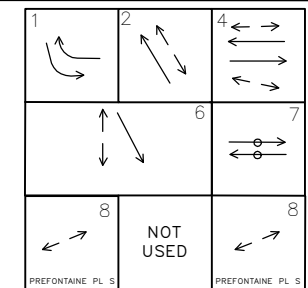
NOTE: ALL CONDUIT MUST CONTAIN A GROUND WIRE

EXISTING PHASE DIAGRAM



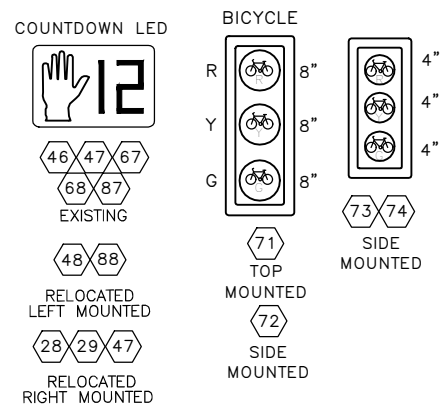
VEHICLE PEDESTRIAN BICYCLE
 **PHASE 2 IS NB PREFONTAINE PL S

PROPOSED PHASE DIAGRAM



VEHICLE PEDESTRIAN BICYCLE
 **PHASE 2 IS NB PREFONTAINE PL S

SIGNAL HEAD DISPLAY



HANDHOLE SCHEDULE - SIGNALS

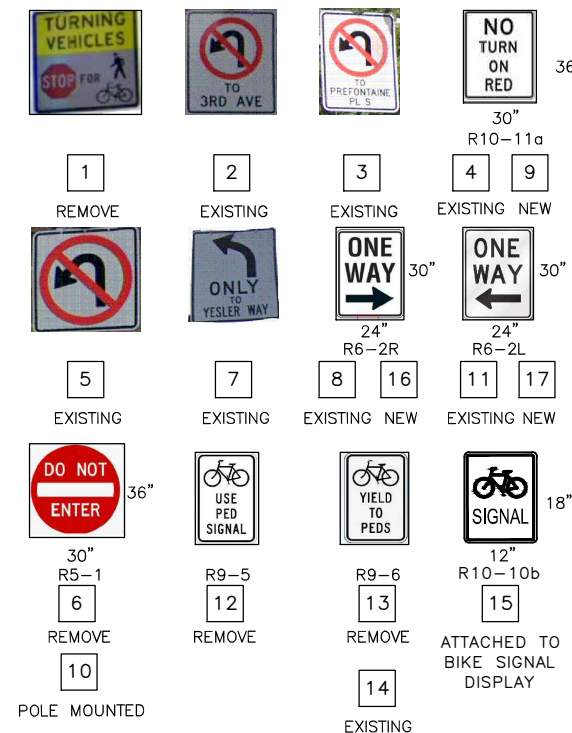
QTY	BID ITEM #	HANDHOLE TYPE	LABEL
4	833313	TYPE 3	SDOT

APS PPB SCHEDULE

PPB NO.	POLE NO.	ROTATION/AZIMUTH	SIGN DIRECTION (R10-3)	MESSAGE/RAPID TICK
PPB 28	P2	270	LEFT	"WALK SIGN IS ON TO CROSS 3RD AVE SOUTH"
PPB 29	P3	45	LEFT	"WALK SIGN IS ON TO CROSS SOUTH YESLER STREET"
PPB 88	P3	135	RIGHT	"WALK SIGN IS ON TO CROSS PREFONTAINE PLACE SOUTH"
PPB 87	P EX10	255	RIGHT	"WALK SIGN IS ON TO CROSS PREFONTAINE PLACE SOUTH"
PPB 48	P4	0	RIGHT	"WALK SIGN IS ON TO CROSS 3RD AVE SOUTH"
PPB 49	P EX9	0	LEFT	"WALK SIGN IS ON TO CROSS 3RD AVE SOUTH"
PPB 68	P EX8	90	LEFT	"WALK SIGN IS ON TO CROSS SOUTH YESLER STREET"
PPB 67	P5	270	LEFT	"WALK SIGN IS ON TO CROSS SOUTH YESLER STREET"
PPB 48	P6	195	RIGHT	"WALK SIGN IS ON TO CROSS 3RD AVE SOUTH"
PPB 47	P1	227	LEFT	"WALK SIGN IS ON TO CROSS 3RD AVE SOUTH"

SIGNS

(3RD & YESLER)

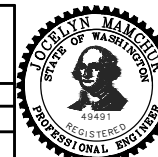


SIGNAL LOOP AND WIRING SCHEDULES

3RD AVE AND YESLER WAY
 SAFETY IMPROVEMENTS

PC	TRC0487
CO	TRC0487
VPI #	792-758
SG02	
SHEET 11 OF 20	

APPROVED FOR ADVERTISING FAS PURCHASING AND CONTRACTING DIRECTOR	INITIALS AND DATE DESIGNED JN CHECKED JM	INITIALS AND DATE REVIEWED: DES. CONST. SDOT PROJ. MGR.
SEATTLE, WASHINGTON 20	DRAWN MEO CHECKED JM	RECEIVED REVISED AS BUILT
BY: FAS PURCHASING AND CONTRACTING DIRECTOR	ALL WORK SHALL BE DONE IN ACCORDANCE WITH THE CITY OF SEATTLE STANDARD PLANS AND SPECIFICATIONS AND OTHER DOCUMENTS CALLED FOR IN SECTION 0-22.3 OF THE PROJECT MANUAL.	

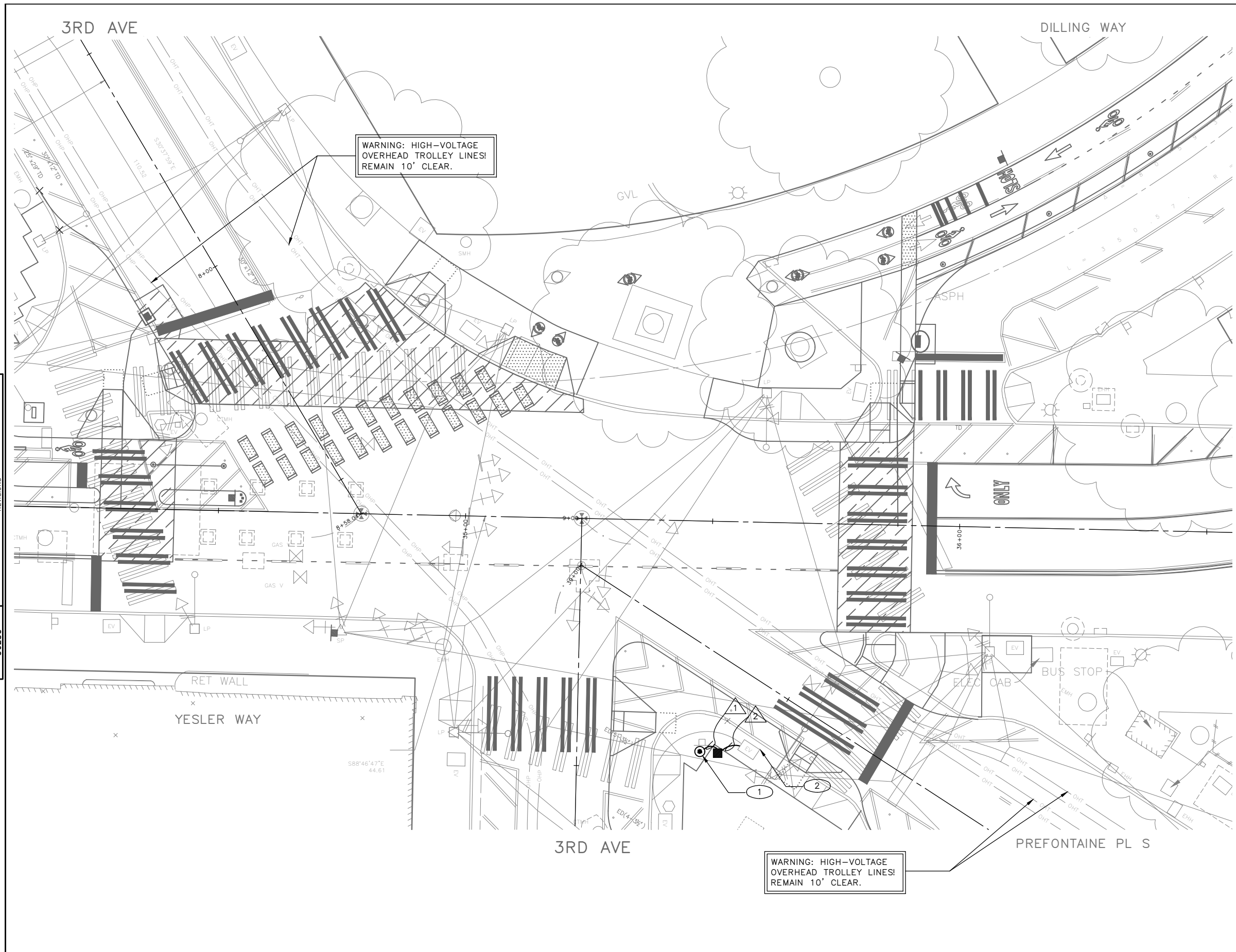


Seattle Department of Transportation
 ORDINANCE NO. 126725 PW NO. 2023-027
 SCALE: 1"=10'

VAULT SERIAL NO. 39283
 DATE MARK REVISIONS NATURE MADE CHKD REV'D

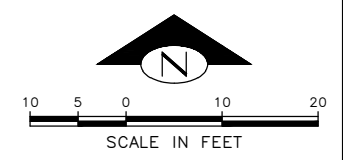
P:\SDOT\TRC0487_3rd & Yesler Improvements\A-Plot Sheets\TRC0487_P-SIG.dwg
 Jan-05-24 3:04pm

VAULT SERIAL NO.	DATE	MARK	NATURE	MADE	CHK'D	REV'D
39283						



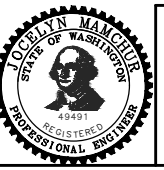
CONSTRUCTION NOTES
INSTALL:

- ① LUMINAIRE, POLE AND FOUNDATION. REF TO SCHEDULES.
 POLE: SCL STOCK CAT #569518 STEEL POLE, CHIEF SEATTLE ORNAMENTAL, 18' LENGTH. CONTRACTOR TO COORDINATE VERTICAL TOP TENON MOUNTING FOR BRACKET ARM WITH ARM MANUFACTURER.
 LUMINAIRE: 3-BALL GLOVE BRACKET ARM, LED POST-TOP CLASSIC
 BASE COVER: SCL MATERIAL STANDARD 5780.44. CHIEF SEATTLE BASE, CAST BRONZE.
 SCL TO FURNISH THE FOLLOWING FOR THE CONTRACTOR TO INSTALL:
 SCL MATERIAL STANDARD #5721.0 (COMPRESSION PLATE)
 SCL STOCK #572900 (BRACKET ARM ONLY)
 SCL STOCK #572902 (COMPRESSION PLATE)
- ② INTERCEPT EX HANDHOLE WITH NEW CONDUIT. REFER TO SCHEDULES.



LIGHTING PLAN

APPROVED FOR ADVERTISING FAS PURCHASING AND CONTRACTING DIRECTOR		INITIALS AND DATE		INITIALS AND DATE	
SEATTLE, WASHINGTON 20		DESIGNED JN	REVIEWED:	DES.	CONST.
BY: FAS PURCHASING AND CONTRACTING DIRECTOR		CHECKED JM	SDOT	PROJ. MGR.	
		DRAWN MEO	RECEIVED		
		CHECKED JM	REVISED AS BUILT		
		ALL WORK SHALL BE DONE IN ACCORDANCE WITH THE CITY OF SEATTLE STANDARD PLANS AND SPECIFICATIONS AND OTHER DOCUMENTS CALLED FOR IN SECTION 0-02.3 OF THE PROJECT MANUAL.			



Seattle Department of Transportation
 ORDINANCE NO. 126725 PW NO. 2023-027
 SCALE: 1"=10'

**3RD AVE AND YESLER WAY
SAFETY IMPROVEMENTS**

PC	TRC0487
CO	TRC0487
VPI #	792-758
LT01	
SHEET 12 OF 20	

P:\SDOT\TRC0487_3rd & Yesler Improvements\A-Plot_Sheets\TRC0487_P-LITE.dwg
 Jan-05-24, 3:06pm

POLE/PEDESTAL SCHEDULE

POLE NO.	STATION/LOCATION AND OFFSET	POLE TYPE	LENGTH (FT)	FOUNDATION TYPE
P LT1	34+95.8, 47.3' LT	STREETLIGHT	18	STD PLAN NO. 543A

HANDHOLE SCHEDULE – LIGHTING

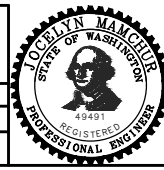
QTY	BID ITEM #	HANDHOLE TYPE	LABEL
1	833322	TYPE 2	SL

WIRING SCHEDULE

RUN NO △ x	CONDUIT SIZE	EXISTING CONDUCTORS	LIGHTING	GROUND	COMMENTS
1	1-2" SL	-	3 #6 (L1, N, G)	1-#6	
2	1-2" SL	-	3 #6 (L1, N, G)	1-#6	INTERCEPT INTO EX HANDHOLE

LIGHTING SCHEDULES AND DETAILS

APPROVED FOR ADVERTISING FAS PURCHASING AND CONTRACTING DIRECTOR SEATTLE, WASHINGTON 20 BY: FAS PURCHASING AND CONTRACTING DIRECTOR		INITIALS AND DATE DESIGNED JN CHECKED JM DRAWN MEO CHECKED JM	INITIALS AND DATE REVIEWED: DES. CONST. SDOT PROJ. MGR. RECEIVED REVISED AS BUILT
ALL WORK SHALL BE DONE IN ACCORDANCE WITH THE CITY OF SEATTLE STANDARD PLANS AND SPECIFICATIONS AND OTHER DOCUMENTS CALLED FOR IN SECTION 0-02.3 OF THE PROJECT MANUAL.			



Seattle Department of Transportation
 ORDINANCE NO. 126725 PW NO. 2023-027
 SCALE: 1"=10'

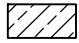

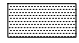

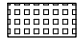




3RD AVE AND YESLER WAY
 SAFETY IMPROVEMENTS

PC	TRC0487
CO	TRC0487
VPI #	792-758
LT02	
SHEET	13 OF 20

VAULT SERIAL NO.	DATE	MARK	NATURE	MADE	CHK'D	REVD
39283						

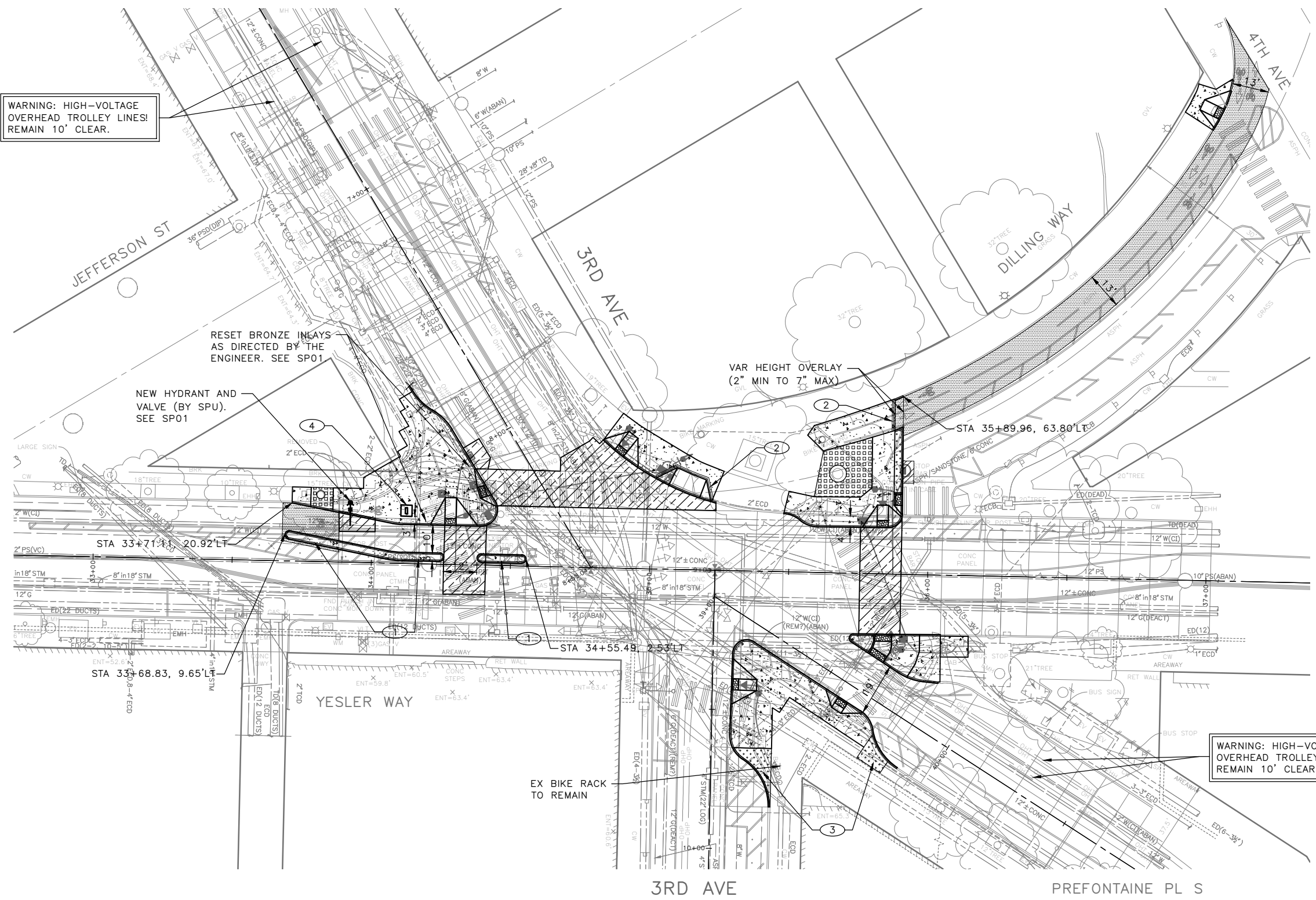
P:\S01019\TRC0487_3rd & Yesler Improvements\A-Pilot Sheets\TRC0487_P-LITE.dwg
 2023-05-24 3:06pm

PAVING LEGEND

-  12" ROADWAY CEM CONC PAVEMENT, 24HR HES, OVER 6" MNRL AGG TYPE 2. MATCH JOINTING AND GRADING OF EX PANELS.
-  COLORED CEM CONC SIDEWALK W/25% POZZOLANS, PER STD PLANS 420 & 421. SEE SECTION 8-14.2.
-  HMA CL 1/2" OVERLAY (2" DEPTH MIN OR AS SHOWN ON PLAN)
-  9" HMA CL 1/2" OVER 6" MNRL AGG TYPE 2
-  FLEXIBLE POROUS SURFACE TREATMENT PER STD SPEC 8-02.3(9)B. COLOR MUST BE CHESTNUT. MNRL AGG TYPE 22 BASE COURSE MUST BE 2" MIN.
-  ARBORIST WOOD CHIP MULCH OVER AMENDED SOIL PER STD PLAN 142. SEE NOTE 3 FOR TREE PIT LOCATIONS.
-  CURB, CEM CONC W/25% POZZOLANS PER STD PLAN 410C OR 421
-  CURB RAMP. SEE CR SHEETS
-  DETECTABLE WARNING PLATE, CAST IRON. SEE SECTION 9-36.

CONSTRUCTION NOTES

- ① CEMENT CONCRETE CURB PBL BUFFER. SEE DETAIL ON PVDT1
- ② INSTALL CAST-IN-PLACE DETECTABLE DIRECTIONAL STRIP PER STD PLAN 422i
- ③ INSTALL TREE PIT PER STD PLAN 100A. (LONDON PLANE TREE BY SDOT CREWS)
- ④ INSTALL WAYFINDING SIGN FOUNDATION TYPE 1. SEE DETAIL IN APPENDIX OF PROJECT MANUAL, SHEET ST1B. (SIGN BY SDOT CREWS)



WARNING: HIGH-VOLTAGE OVERHEAD TROLLEY LINES! REMAIN 10' CLEAR.

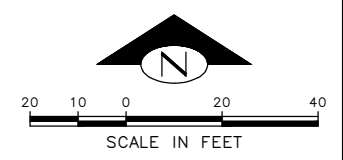
RESET BRONZE INLAIS AS DIRECTED BY THE ENGINEER. SEE SP01

NEW HYDRANT AND VALVE (BY SPU). SEE SP01

VAR HEIGHT OVERLAY (2" MIN TO 7" MAX)

WARNING: HIGH-VOLTAGE OVERHEAD TROLLEY LINES! REMAIN 10' CLEAR.

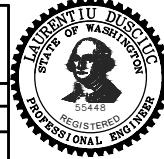

EX BIKE RACK TO REMAIN



PAVING PLAN

VAULT SERIAL NO.	DATE	MARK	NATURE	MADE	CHK'D	REV'D
39283						

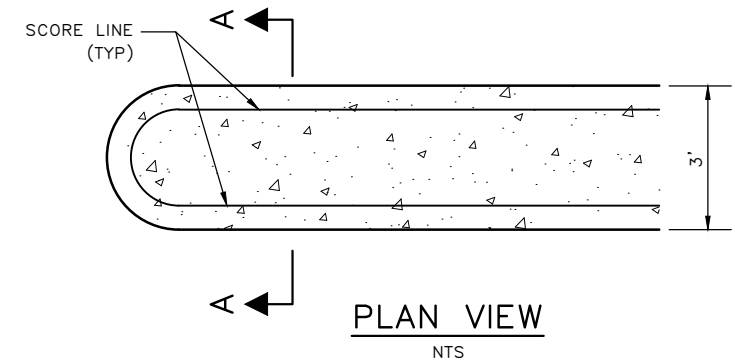
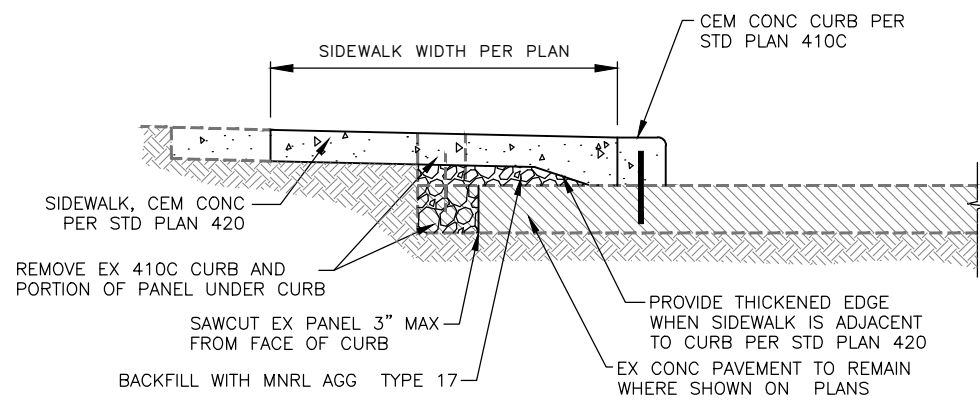
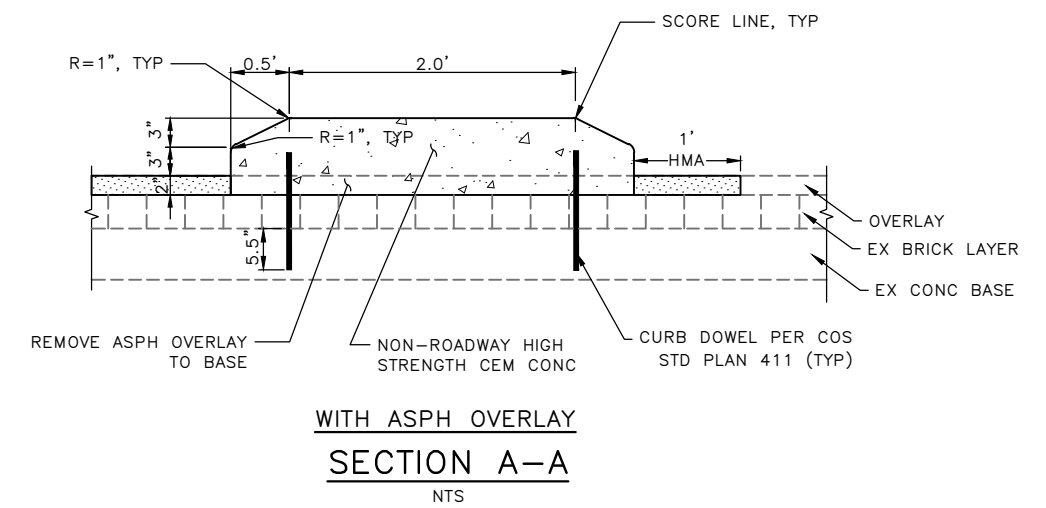
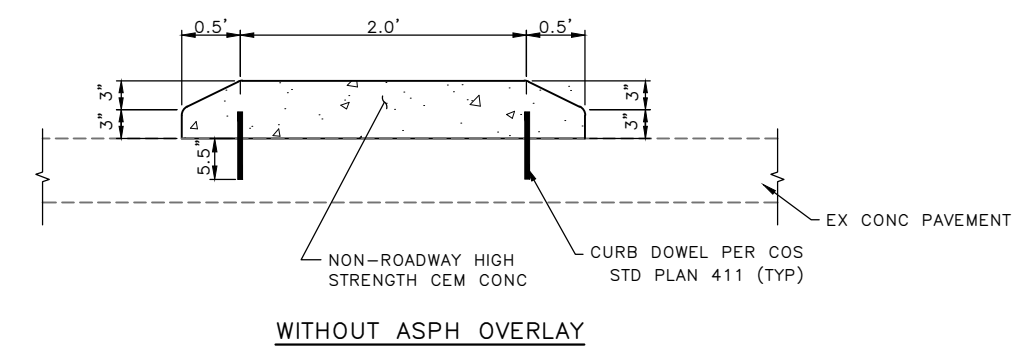
P:\SDOT\TRC0487_3rd & Yesler Improvements\A-Pilot Sheets\SSM\PAVING PLAN\VP01.dwg
 Jan-05-24, 3:08pm

APPROVED FOR ADVERTISING FAS PURCHASING AND CONTRACTING DIRECTOR SEATTLE, WASHINGTON 20 BY: FAS PURCHASING AND CONTRACTING DIRECTOR		INITIALS AND DATE DESIGNED JN CHECKED JM DRAWN MEO CHECKED JM		INITIALS AND DATE REVIEWED: DES. CONST. SDOT PROJ. MGR. RECEIVED REVISED AS BUILT			 ORDINANCE NO. 126725 PW NO. 2023-027 SCALE: 1"=20'
ALL WORK SHALL BE DONE IN ACCORDANCE WITH THE CITY OF SEATTLE STANDARD PLANS AND SPECIFICATIONS AND OTHER DOCUMENTS CALLED FOR IN SECTION 0-02.3 OF THE PROJECT MANUAL.							

**3RD AVE AND YESLER WAY
SAFETY IMPROVEMENTS**

PC	TRC0487
CO	TRC0487
VPI #	792-758
PV01	
SHEET 14 OF 20	

DATE	MARK	NATURE	MADE	CHK'D	REV'D
VAULT SERIAL NO. 39283					

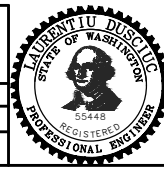


CURB RESTORATION 1
NTS

CEMENT CONCRETE CURB PBL BUFFER 2
NTS

PAVING DETAILS

APPROVED FOR ADVERTISING FAS PURCHASING AND CONTRACTING DIRECTOR		INITIALS AND DATE	
DESIGNED JN	CHECKED JM	REVIEWED: DES. SDOT	CONST. PROJ. MGR.
SEATTLE, WASHINGTON 20		RECEIVED	
BY:		REVISED AS BUILT	
FAS PURCHASING AND CONTRACTING DIRECTOR		ALL WORK SHALL BE DONE IN ACCORDANCE WITH THE CITY OF SEATTLE STANDARD PLANS AND SPECIFICATIONS AND OTHER DOCUMENTS CALLED FOR IN SECTION 0-02.3 OF THE PROJECT MANUAL.	



Seattle Department of Transportation
ORDINANCE NO. 126725 PW NO. 2023-027
SCALE: AS NOTED

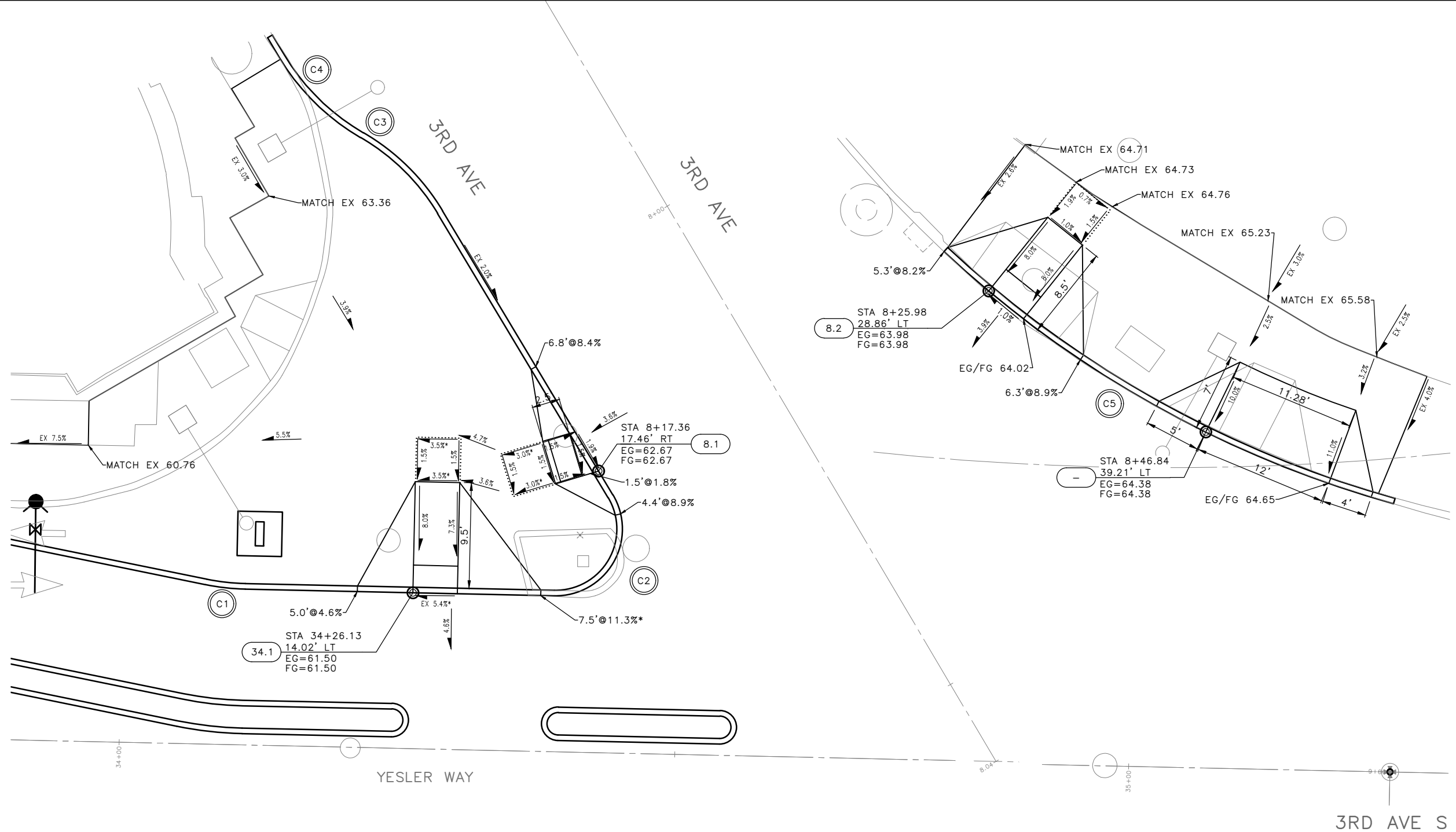
3RD AVE AND YESLER WAY
SAFETY IMPROVEMENTS

PC	TRC0487
CO	TRC0487
VPI #	792-758
PVDT01	
SHEET 15 OF 20	

P:\SDOT\TRC0487_3rd & Yesler Improvements\A-Plan Sheets\SSM\PAVING PLAN\PVDT01.dwg
Jan-05-24 3:09pm

P:\SDOT\TRC0487_3rd & Yesler Improvements\A-Plot Sheets\TRC0487_P-16AMP.dwg
 Jan-05-24 3:10pm

VAULT	SERIAL NO.	DATE	MARK	NATURE	MADE	CHK'D	REV'D
	39283						



MEF CODES

- *1 RIGHT-OF WAY AVAILABILITY
- *2 ROADWAY STRUCTURAL CONSTRAINT; WALL, AREAWAY, OR BRIDGE
- *3 ADJACENT DEVELOPED FACILITY
- *4 DRAINAGE
- *5 HISTORIC FEATURE
- *6 EXISTING ROAD/SIDEWALK SLOPES
- *7 EXISTING UTILITY VAULT OR UTILITY STRUCTURE
- *8 (OTHER), DESCRIBE, ADD ANNOTATION

GENERAL NOTES

1. SEE SITE PREPARATION AND PAVING PLANS FOR ADDITIONAL INFORMATION OF BELOW AND ABOVE SURFACE FEATURES.
2. SEE PAVING PLANS FOR ALIGNMENT INFORMATION.

LEGEND

..... GRADE BREAK

CURB RETURN

NO.	POINT	STATION	OFFSET	FL ELEV	GEOMETRY
C1	PC	34+11.03	14.02'LT	60.66	$\Delta=10'16'22''$ $L=3.59'$ $R=20.00'$ $T=1.80'$
	1/4	34+10.14	14.04'LT	60.60	
	1/2	34+09.24	14.10'LT	60.54	
	3/4	34+08.35	14.20'LT	60.49	
	PT	34+07.47	14.34'LT	60.45	

CURB RETURN

NO.	POINT	STATION	OFFSET	FL ELEV	GEOMETRY
C2	PC	34+43.91	23.22'LT	62.62	$\Delta=122'12'41''$ $L=12.8'$ $R=6.00'$ $T=10.87'$
	1/4	34+44.83	20.19'LT	62.53	
	1/2	34+44.09	17.12'LT	62.47	
	3/4	34+41.88	14.85'LT	62.27	
	PT	34+38.83	14.02'LT	62.11	

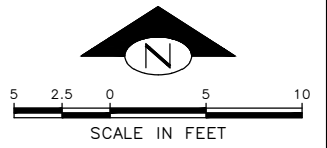
CURB RETURN

NO.	POINT	STATION	OFFSET	FL ELEV	GEOMETRY
C4	PC	7+70.73	22.71'RT	63.58	$\Delta=28'54'27''$ $L=10.09'$ $R=20.00'$ $T=5.16'$
	1/2	7+75.72	22.05'RT	63.41	
	PRC	7+80.38	20.17'RT	63.30	
C3	1/2	7+85.05	18.28'RT	63.24	$\Delta=28'54'27''$ $L=10.09'$ $R=20.00'$ $T=5.16'$
	PT	7+90.04	17.62'RT	63.13	

CURB RETURN

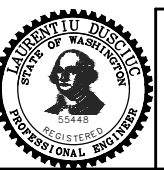
NO.	POINT	STATION	OFFSET	FL ELEV	GEOMETRY
C5	PC	34+82.40	45.93'LT	63.95	$\Delta=27'22'4''$ $L=46.81'$ $R=98.00'$ $T=23.86'$
	1/4	34+91.58	38.68'LT	64.02	
	1/2	35+01.55	32.57'LT	64.24	
	3/4	35+12.19	27.70'LT	64.51	
	PT	35+23.32	24.13'LT	64.83	

(x.x)	STD PLAN	MEF CODE
34.1	422a	*6
8.1	422d	*6
8.2	422a	



CURB RAMP PLAN 01

APPROVED FOR ADVERTISING FAS PURCHASING AND CONTRACTING DIRECTOR SEATTLE, WASHINGTON 20 BY: FAS PURCHASING AND CONTRACTING DIRECTOR		INITIALS AND DATE DESIGNED JN CHECKED JM DRAWN MEO CHECKED JM	INITIALS AND DATE REVIEWED: DES. CONST. SDOT PROJ. MGR. RECEIVED REVISED AS BUILT
---	--	---	---



Seattle Department of Transportation
 ORDINANCE NO. 126725 PW NO. 2023-027
 SCALE: 1"=5'

3RD AVE AND YESLER WAY
SAFETY IMPROVEMENTS
CR01

JOB	PC TRC0487
CO	TRC0487
VPI #	792-758
CR01	
SHEET	16 OF 20

CURB RETURN

NO.	POINT	STATION	OFFSET	FL ELEV	GEOMETRY
C6	PC	35+47.94	20.87'LT	65.89	Δ=28°54'27" L=10.09' R=20.00' T=5.16'
	1/2	35+50.97	20.21'LT	65.95	
	PRC	35+53.66	18.65'LT	65.98	
C7	1/2	35+56.67	16.97'LT	66.02	Δ=28°54'27" L=10.09' R=20.00' T=5.16'
	PT	35+60.07	16.41'LT	66.14	

CURB RETURN

NO.	POINT	STATION	OFFSET	FL ELEV	GEOMETRY
C8	PC	35+85.46	16.68'LT	67.23	Δ=90°0'0" L=7.85' R=5.00' T=5.00'
	1/4	35+87.37	17.08'LT	67.36	
	1/2	35+88.98	18.19'LT	67.49	
	3/4	35+90.04	19.82'LT	67.58	
	PT	35+90.40	21.74'LT	67.63	

(X.X)	STD PLAN	MEF CODE
35.1	422a	*6
35.2	422a	*6
37.1	422a	*6

MEF CODES

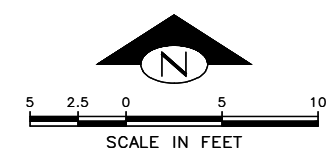
- *1 RIGHT-OF WAY AVAILABILITY
- *2 ROADWAY STRUCTURAL CONSTRAINT; WALL, AREAWAY, OR BRIDGE
- *3 ADJACENT DEVELOPED FACILITY
- *4 DRAINAGE
- *5 HISTORIC FEATURE
- *6 EXISTING ROAD/SIDEWALK SLOPES
- *7 EXISTING UTILITY VAULT OR UTILITY STRUCTURE
- *8 (OTHER), DESCRIBE, ADD ANNOTATION

GENERAL NOTES

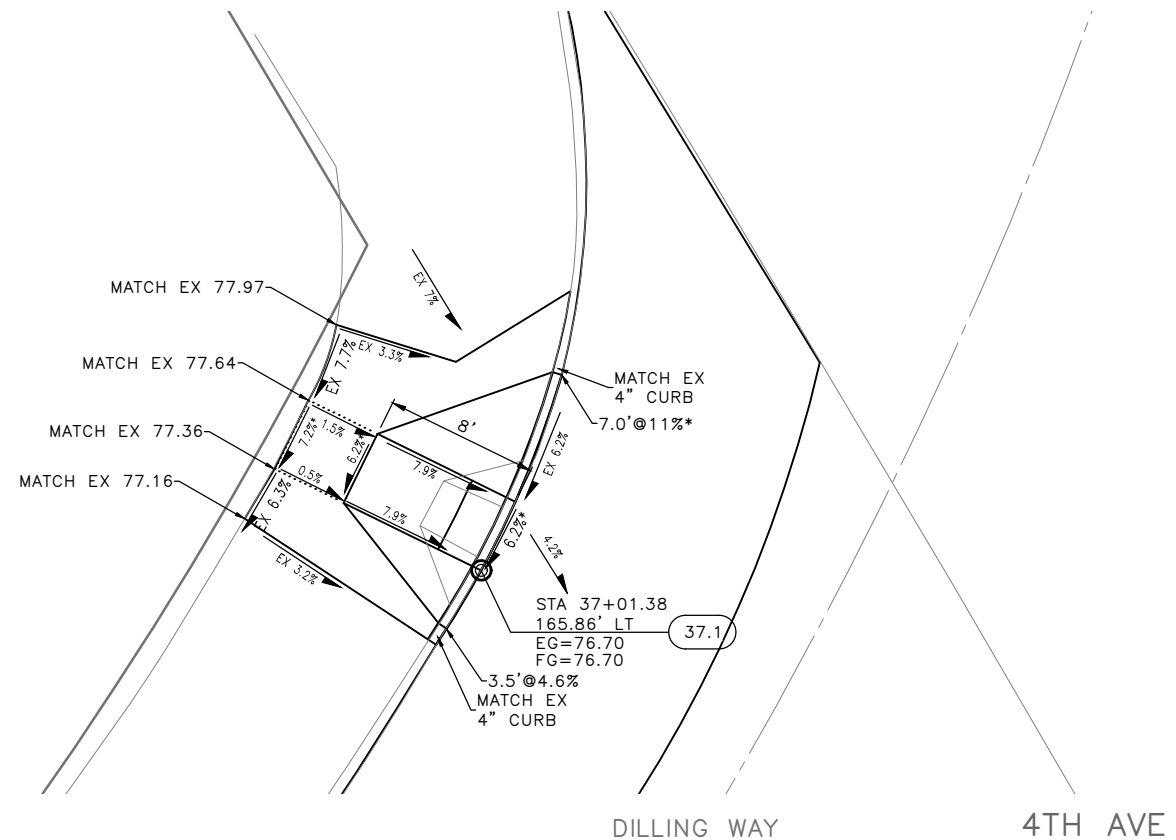
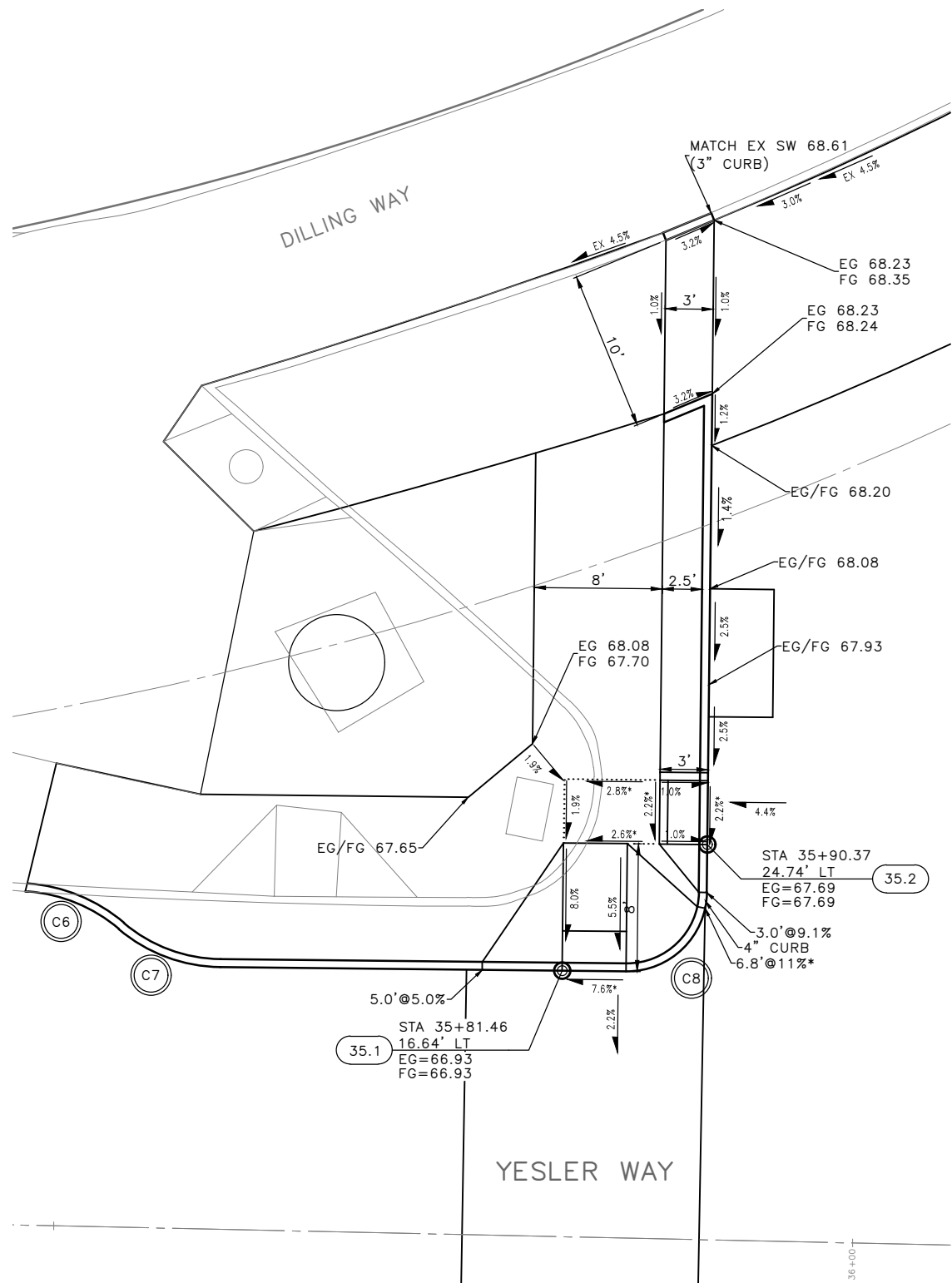
1. SEE SITE PREPARATION AND PAVING PLANS FOR ADDITIONAL INFORMATION OF BELOW AND ABOVE SURFACE FEATURES.
2. SEE PAVING PLANS FOR ALIGNMENT INFORMATION.

LEGEND

..... GRADE BREAK



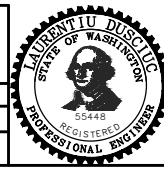
CURB RAMP PLAN 02



VAULT SERIAL NO.	DATE	MARK	NATURE	MADE	CHK'D	REV'D
39283						

P:\S01019\TRC0487_3rd & Yesler Improvements\A-Plot_Sheets\TRC0487_P--RAMP.dwg
Jan-05-24 3:11pm

APPROVED FOR ADVERTISING FAS PURCHASING AND CONTRACTING DIRECTOR		INITIALS AND DATE		INITIALS AND DATE	
SEATTLE, WASHINGTON 20		DESIGNED JN	REVIEWED: DES.	CONST.	
		CHECKED JM	SDOT	PROJ. MGR.	
		DRAWN MEO	RECEIVED		
		CHECKED JM	REVISED AS BUILT		
BY: FAS PURCHASING AND CONTRACTING DIRECTOR		ALL WORK SHALL BE DONE IN ACCORDANCE WITH THE CITY OF SEATTLE STANDARD PLANS AND SPECIFICATIONS AND OTHER DOCUMENTS CALLED FOR IN SECTION 0-02.3 OF THE PROJECT MANUAL.			



Seattle Department of Transportation
ORDINANCE NO. 126725 PW NO. 2023-027
SCALE: 1"=5'

3RD AVE AND YESLER WAY SAFETY IMPROVEMENTS

PC	TRC0487
CO	TRC0487
VPI #	792-758
CR02	
SHEET 17 OF 20	

SIGNING LEGEND

MP	METAL POST
RW SLEEVE	RED AND WHITE SLEEVE PER STD PLAN 620
SNS	STREET NAME SIGN(S)
TS-5	5-FOOT SIGN POST PER STD PLAN NO 625
TS-10	10-FOOT SIGN POST PER STD PLAN NO 625
TS-10RW	10-FOOT SIGN POST WITH RED AND WHITE STRIPED POST SLEEVE PER STD PLAN 620
WP	WOOD POST
	INSTALL
	REMOVE
	RELOCATE/ MAINTAIN

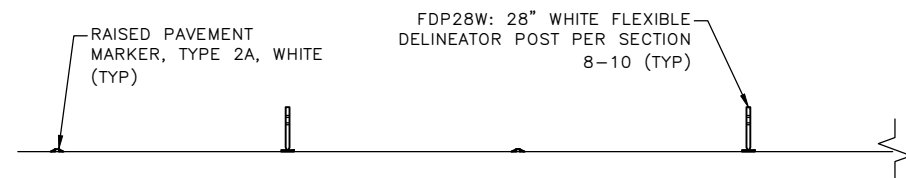
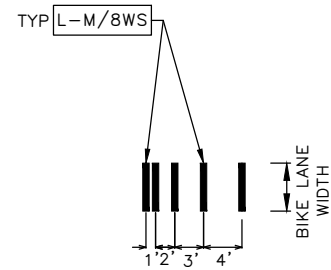
NOTES

ALL SIGNS INSTALLED ON FLEXIBLE POSTS SHALL BE PLASTIC

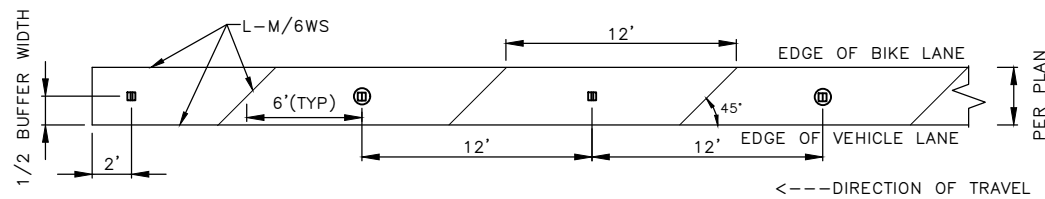
SIGN SCHEDULE

SIGN CODE	SIGN TEXT/ DESCRIPTION	SIGN IMAGE	SIGN SIZE
OM-3R	OBJECT ON RIGHT		12X36
R1-1	STOP (RED BACKING)		30X30
R7-NP	[RED SLASHED CIRCLE] P		12X12
R7-NPL	[SLASH OVER CIRCLE] P [LEFT ARROW] (ORIENTED 45° TOWARDS TRAFFIC)		12X18
R7-NPR	[SLASH OVER CIRCLE] P [RIGHT ARROW] (ORIENTED 45° TOWARDS TRAFFIC)		12X18
R7-WI30	[CIRCLE SLASH P] WITHIN 30 FEET		12X18
R9-6	BIKES YIELD TO PEDS		12X18
R10-11A	NO TURN ON RED		30X36

BIKE WARNING MARKING 2
NOT TO SCALE



ELEVATION



PLAN

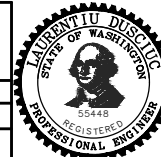
STREET BUFFER 1
NOT TO SCALE

CHANNELIZATION DETAILS

APPROVED FOR ADVERTISING
FAS PURCHASING AND CONTRACTING DIRECTOR
SEATTLE, WASHINGTON 20
BY:
FAS PURCHASING AND CONTRACTING DIRECTOR

INITIALS AND DATE		INITIALS AND DATE	
DESIGNED JN	CHECKED JM	REVIEWED: DES. SDOT	CONST. PROJ. MGR.
DRAWN MEO	CHECKED JM	RECEIVED	REVISED AS BUILT

ALL WORK SHALL BE DONE IN ACCORDANCE WITH THE CITY OF SEATTLE STANDARD PLANS AND SPECIFICATIONS AND OTHER DOCUMENTS CALLED FOR IN SECTION 0-02.3 OF THE PROJECT MANUAL.



Seattle Department of Transportation
ORDINANCE NO. 126725 PW NO. 2023-027
SCALE: AS NOTED

**3RD AVE AND YESLER WAY
SAFETY IMPROVEMENTS**

PC	TRC0487
CO	TRC0487
VPI #	792-758
CHDT01	
SHEET 20 OF 20	

DATE	MARK	NATURE	MADE	CHK'D	REV'D
VAULT SERIAL NO. 39283					

P:\SDOT\TRC0487_3rd & Yesler Improvements\A-Pilot Sheets\SSM\CHANNELIZATION AND SIGNING PLAN\CHDT01.dwg
Jan-05-24 3:14pm