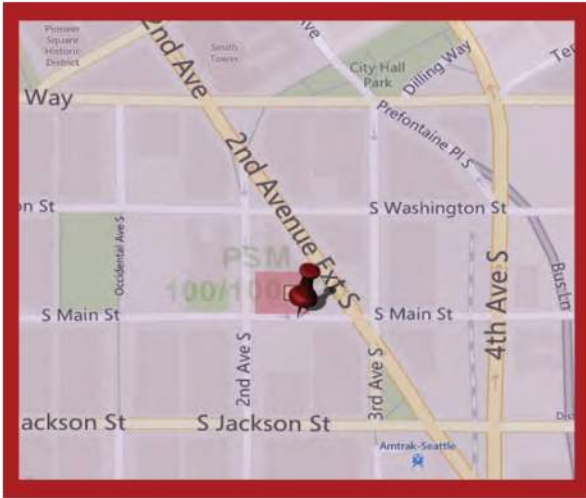


FILE: _

Date: _

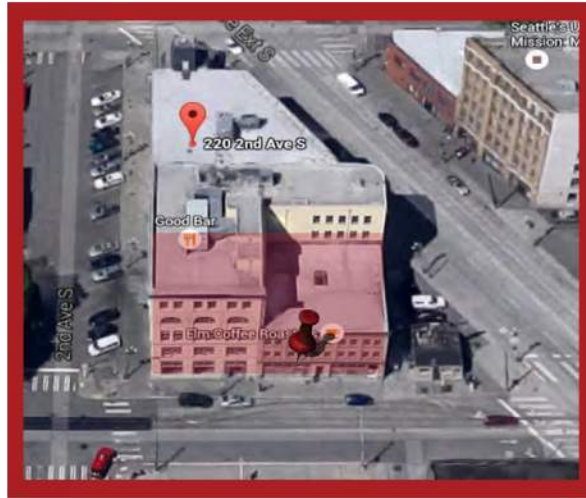
SIGNATURE/DATE: _____

NOTES: _____

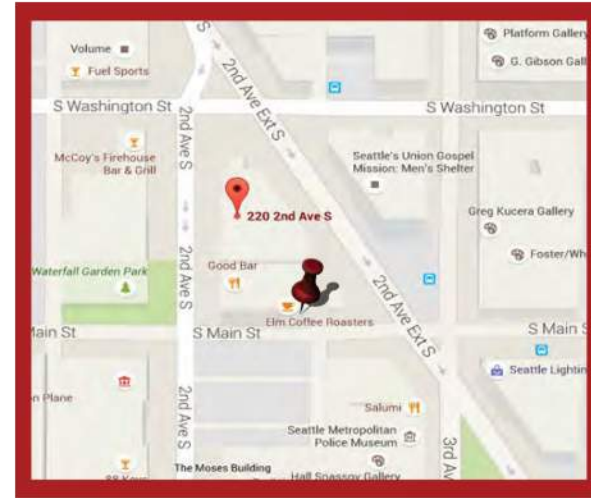


ZONE MAP

PSM 100/100-120



SATELLITE VIEW



VICINITY MAP



ELEVATION VIEW

SHOWN AT APPROXIMATE SIZE AND LOCATION

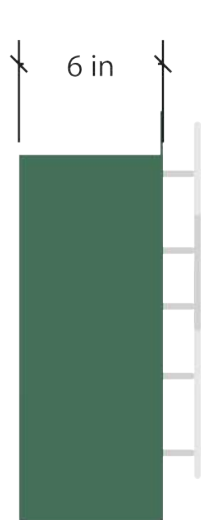
240 2nd Ave S.
Seattle, WA 98108
Zone: (PSM 100/100-120)
SGN1: Neon Wall Sign
Approx: 60 lbs
Approx: 5.5 s.f.
Use 1/2" Lag Bolts



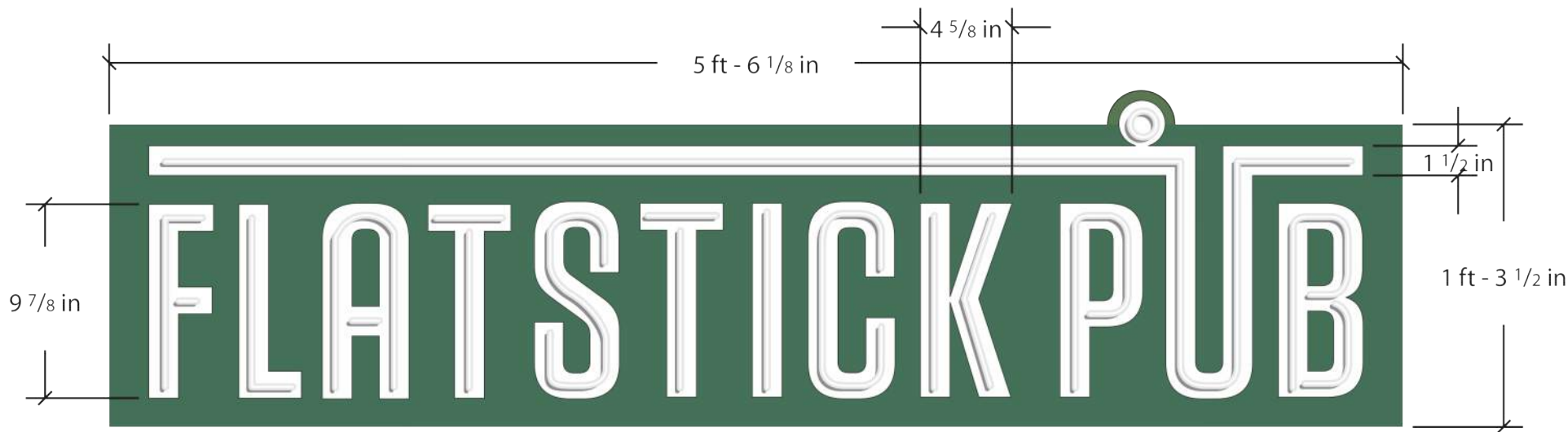
existing



proposed



Section View
Scale: 1 1/2" = 1'-0"



Front View
Scale: 1 1/2" = 1'-0"

Approx: 5.5 s.f. **B**

Illuminated Wall Sign

Sign to be fabricated from aluminum and finished to match brand standards.

Illuminate with 12mm Neon Designer White 6500.

Sign to be in front of Transom windows fastened to mullions..

Use 1/2" lag bolts 5" long

Color of sign to follow brand standards. This color combination

best suits for existing architectural finish conditions.

The green field of the sign allows the most contrast and visibility from roadside.

Mounting elevation addresses sightlines over busses and box trucks.

UL
SIGN(S) TO BE MANUFACTURED TO U.L. SPECIFICATIONS AND WILL BEAR THE U.L. LABEL(S). INSTALL IN ACCORDANCE WITH NATIONAL ELECTRICAL CODES.
THIS SIGN IS INTENDED TO BE INSTALLED IN ACCORDANCE WITH THE REQUIREMENTS OF TITLE 600 OF THE NATIONAL ELECTRICAL CODE AND/OR OTHER APPLICABLE LOCAL CODES. THIS INCLUDES PROPER GROUNDING AND BONDING OF SIGN

**240 2nd Ave S.
Seattle, WA 98108
Zone: (PSM 100/100-120)
SGN1: Neon Wall Sign
Approx: 60 lbs
Approx: 5.5 s.f.
Use 1/2" Lag Bolts**



PMS 7527
3M Antique White



PMS 349



CLIENT APPROVAL DESIGN

FILE: _____
Date: _____
SIGNATURE/DATE: _____
NOTES: _____



p: 425.443.4444
m: pablo@amigoarts.com
w: www.amigoarts.com

The design depicted herein is the sole property of Amigo Arts, and may not be reproduced in whole or in part without prior written consent. Actual color, letter sizes and graphic layout may vary slightly due to the properties of materials. Colors may vary depending on media substrate.

CORGIAT 2ND FLOOR
15'-6"

Mount Sign To Vertical Mullions

12 MM Exposed
White Neon

Use 1/2 dia.
Lag Bolts
5" Long

Section View
Scale: 1/2" = 1'-0"

Electrical to pass
through mullion into sign
No visible conduit



CLIENT

FILE: _____

Date: _____

SIGNATURE/DATE: _____

NOTES: _____

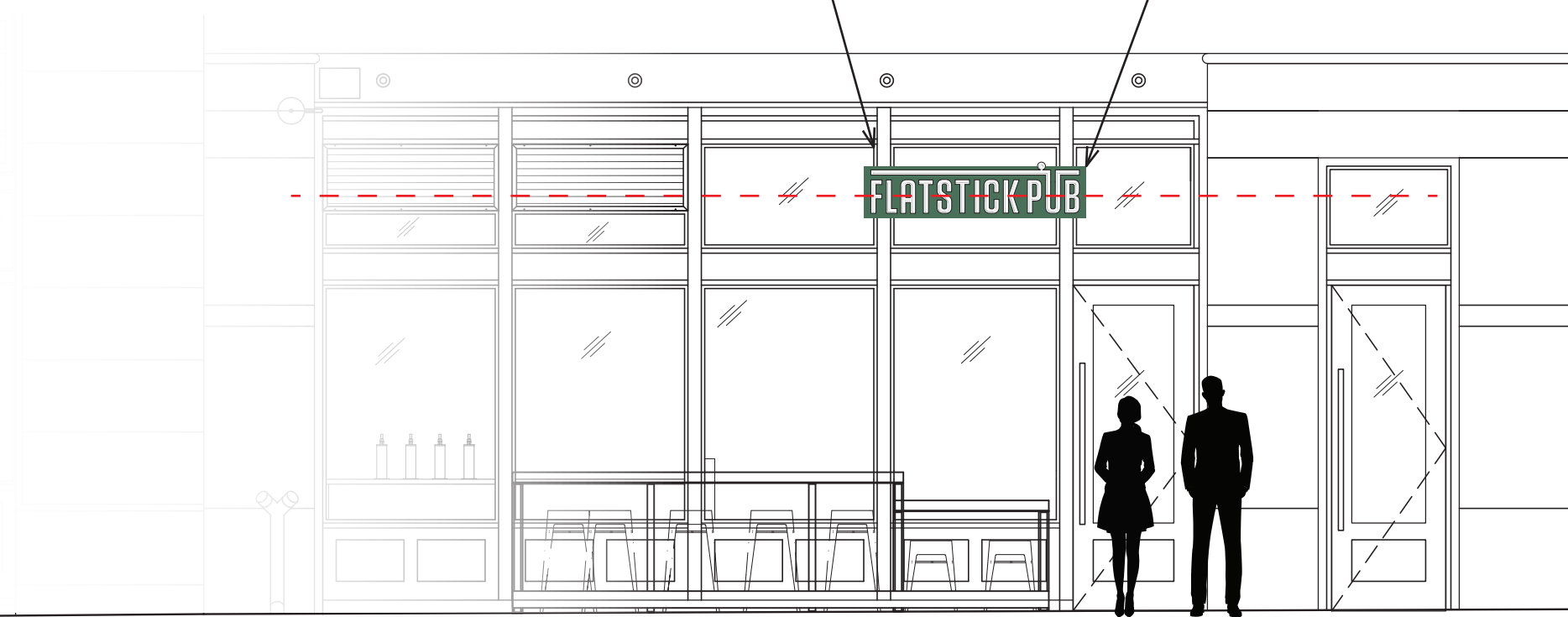
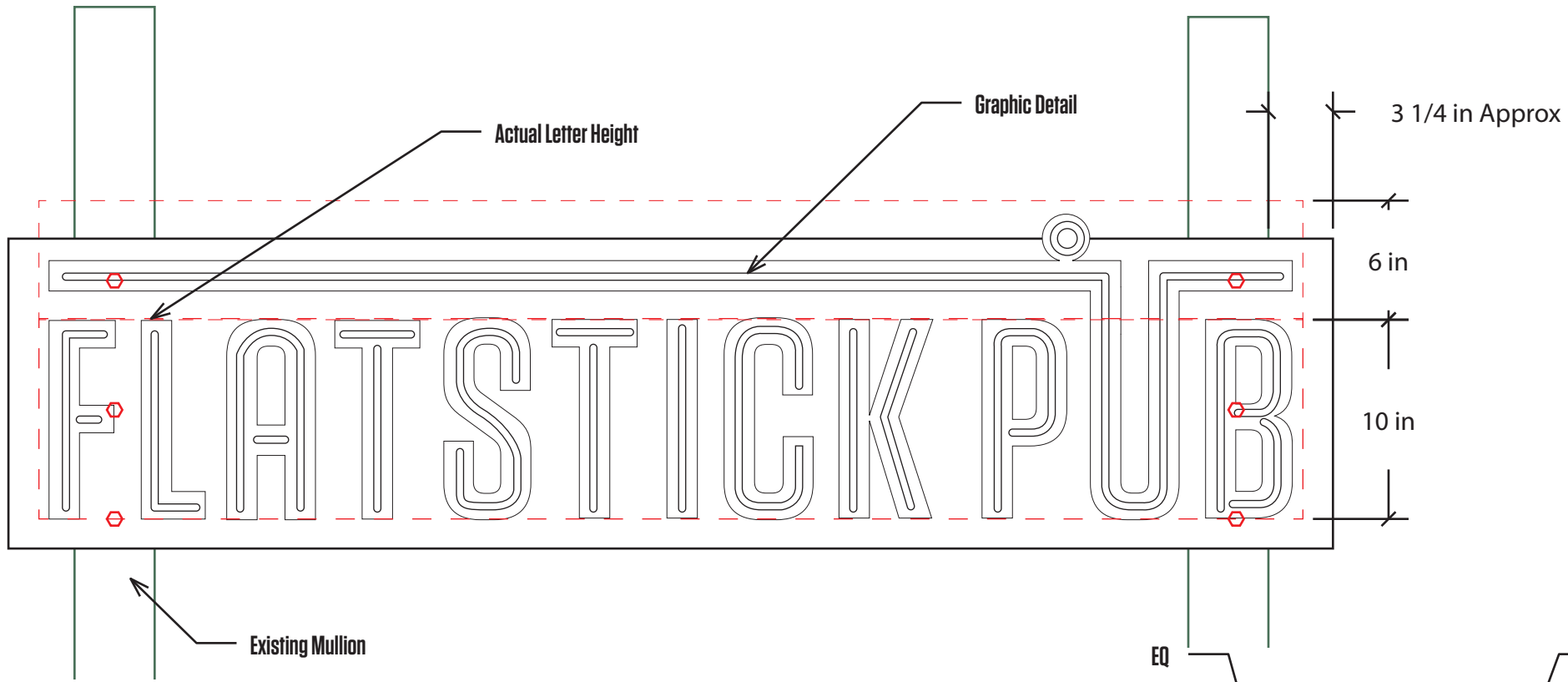
CLIENT APPROVAL DESIGN



p: 425.443.4444
m: pablo@amigoarts.com
w: www.amigoarts.com

The design depicted herein is the sole property of Amigo Arts, and may not be reproduced in whole or in part without prior written consent. Actual color, letter sizes and graphic layout may vary slightly due to the properties of materials. Colors may vary depending on media substrate.

© AMIGO ARTS 2018



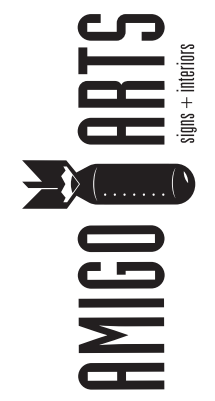
CLIENT APPROVAL DESIGN

FILE: _

Date: _

SIGNATURE/DATE: _____

NOTES: _____



p: 425.443.4444
 m: pablo@amigoarts.com
 w: www.amigoarts.com

The design depicted herein is the sole property of Amigo Arts, and may not be reproduced in whole or in part without our prior written consent. Actual color, letter sizes and graphic layout may vary slightly due to the properties of materials. Colors may vary depending on media substrate.

© AMIGO ARTS 2018



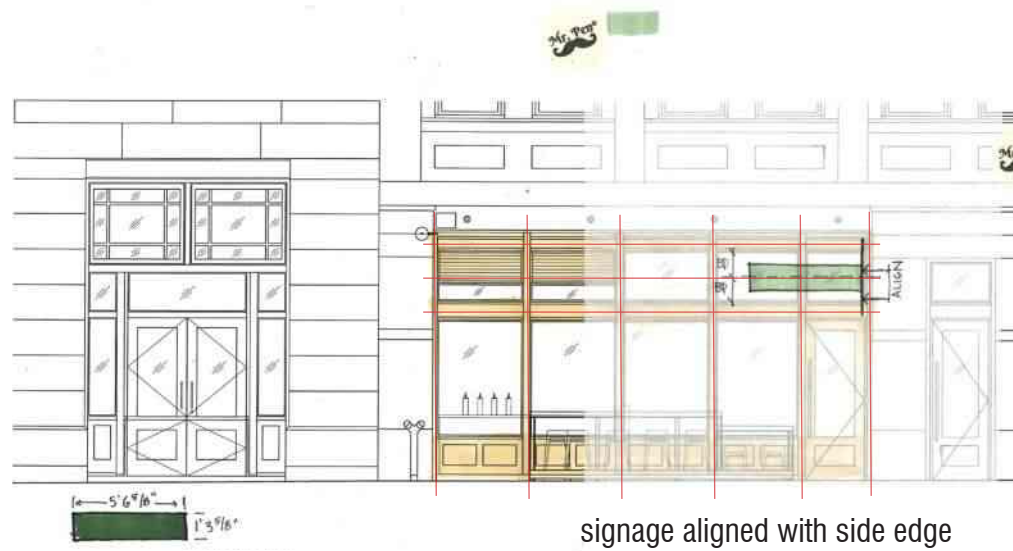
existing storefront, no signage



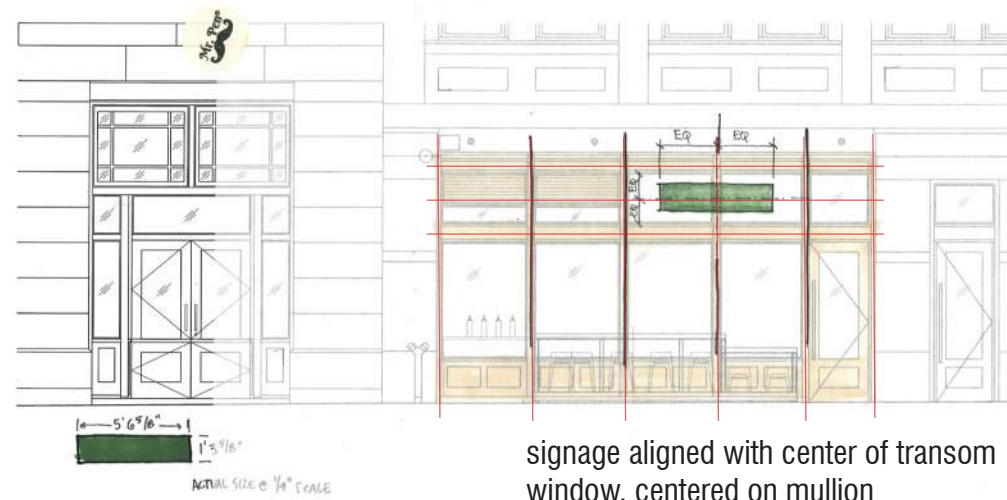
signage aligned with base



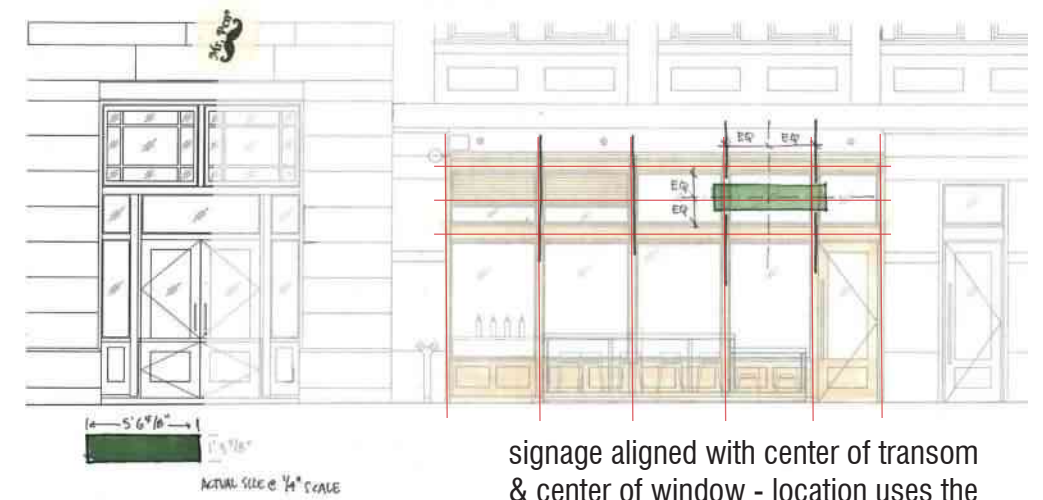
signage aligned with louvers, centered on mullion



signage aligned with side edge

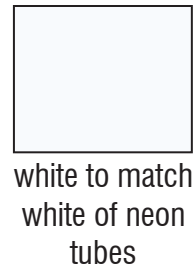


signage aligned with center of transom window, centered on mullion



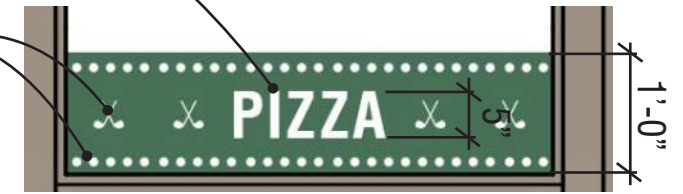
signage aligned with center of transom & center of window - location uses the most alignment cues from the existing storefront system to create a placement that looks and feels purposeful

green background provides contrast to maintain legibility of letters at any distance - white against the lighter facade colors is lost without a darker color to contrast against. this strategy is employed for both the vinyl bands and the hanging sign.



color samples

simple 5" high white lettering, similar to lettering used through out the Pioneer Square District, calling out the offerings of the restaurant space inside
white dots (1" dia.) & golf clubs (3" high) add an unique character, quietly evoking mini-golf



enlargement of vinyl band sign

refer to drawings by amigo arts for further details on the illuminated wall sign (included in this packet)

make-up air louvers proposed & approved under DONH-COA-00656

existing adjacent blade sign for elm coffee for reference only. sign mounted @ 8'-0" above finished grade per PSPB 74/15 certificate of approval - no changes proposed

existing adjacent blade sign for flatstick pub (basement space) for reference only. sign mounted @ 9'-0" above finished grade per PSPB 6/16 certificate of approval - no changes proposed



exterior paint colors proposed & approved under DONH-COA-00656

1' high vinyl signage band - green & white colors to match the illuminated wall sign

colored elevation



T = approximately 1'10" letter height (exception requested)

10" Letter Height

U = approximately 1' letter height (exception requested)



Wall Sign

Sign to be painting over existing sign on east elevation. Sign not to exceed existing sign shape and size. Sign to be finished in a way that looks aged. Faux aging of hand painted mural will come through dry brushing and scumbling white over existing black logo. Flatstick Pub Logo to be dry brushed and distressed to show more age to logo and details.

CLIENT APPROVAL DESIGN



FILE: _

Date: _

SIGNATURE/DATE: _____

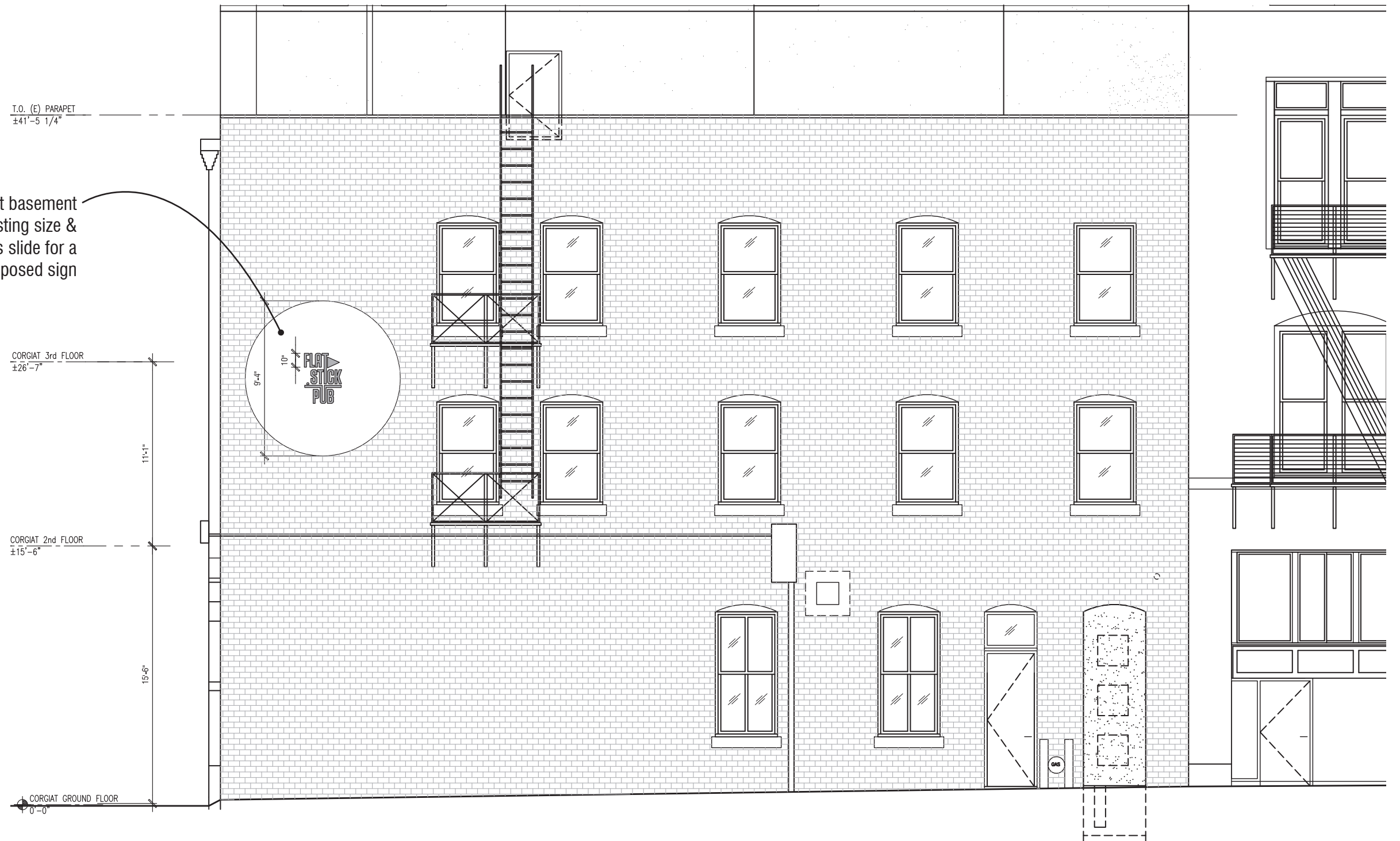
NOTES: _____



p: 425.443.4444
m: pablo@amigoarts.com
w: www.amigoarts.com

The design depicted herein is the sole property of Amigo Arts, and may not be reproduced in whole or in part without prior written consent. Actual color, letter sizes and graphic layout may vary slightly due to the properties of materials. Colors may vary depending on media substrate.

©AMIGO ARTS 2018

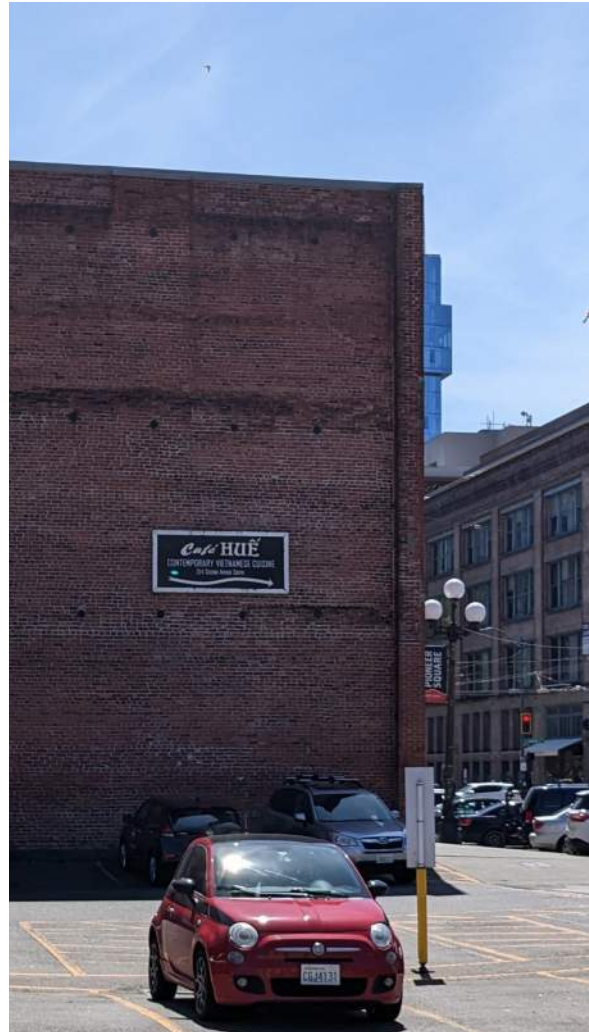
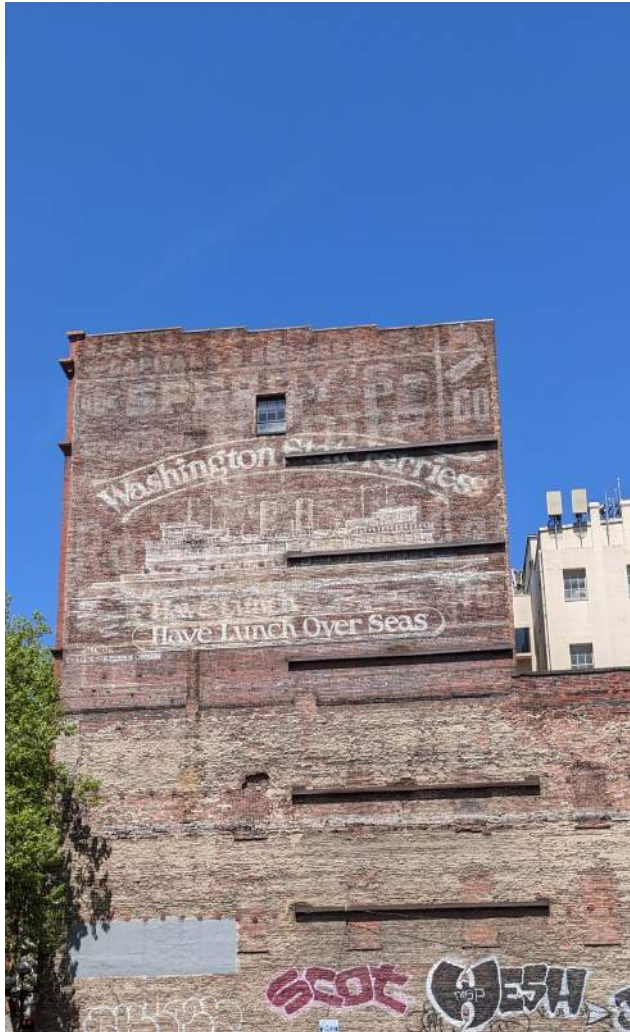


updated wall sign to represent the current basement tenant. new sign to maintain the existing size & weathered appearance, refer to previous slide for a graphic representation of the proposed sign

sign information

The existing wall sign appears to have been painted for the Comedy Underground, which was located in the basement space prior to its current tenant, Flatstick Pub. From our research, it appears the Comedy Underground started in that location in 1981 and moved to its current location around 2008.

The existing elevation is approximately 2,400sf and the existing sign is approximately 68sf. The project proposes to maintain the size of the sign and repaint to represent Flatstick Pub, the current basement tenant. In doing so, we propose to maintain the tradition of using the visibility of this elevation for wayfinding and connection to the businesses continuing to breathe life into this historical building.



Painted wall signs can be found throughout the Pioneer Square neighborhood, using the facades of the building for advertising and wayfinding at scales beyond the pedestrian level.



4th ave s & s main st - existing sign



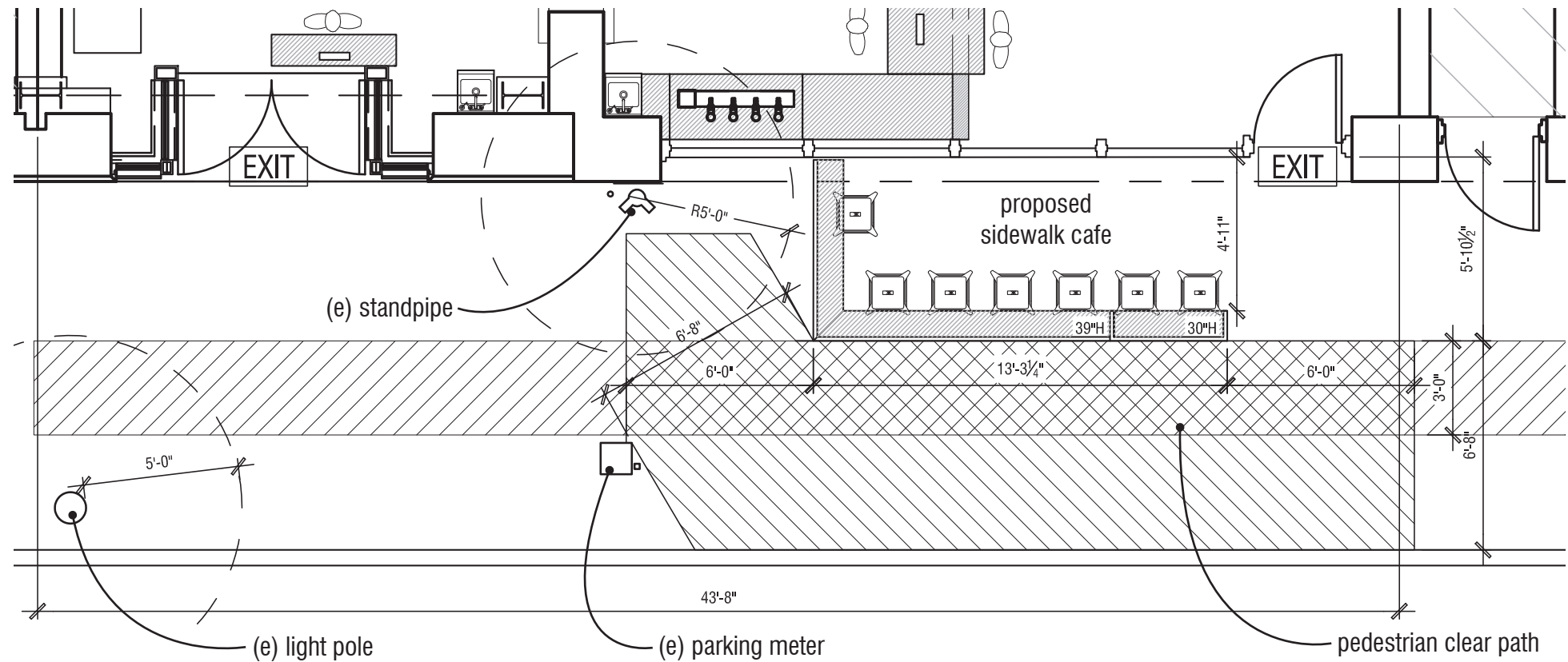
2nd ave ext s & s main st - existing sign



4th ave s & s main st - proposed sign



2nd ave ext s & s main st - proposed sign



notes:

- exterior paint colors & make-up air louvers proposed & approved under DONH-COA-00656
- refer to drawings by amigo arts for further details on the illuminated wall sign (included in this packet)
- refer to previous pages for further details on the vinyl signage band (included in this packet)



frame: cardinal black hammer powder coat finish, or equivalent

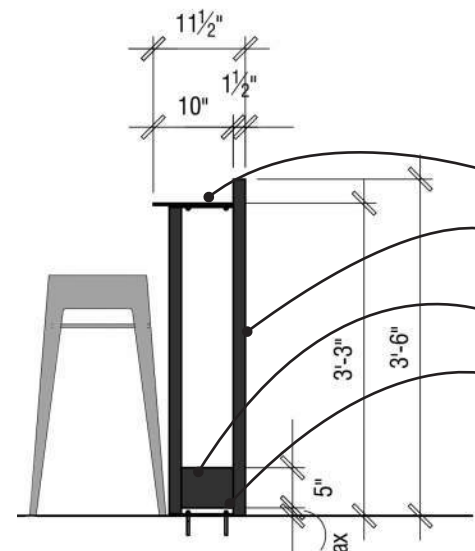


furniture: kai commercial grade 30" backless silver metal bar stool, or equivalent

floor plan



colored elevation



railing section

material information

- 1/2" steel plate drink ledge
- 1 1/2" x 1 1/2" steel tube frame, typ
- 1/4" x 5" steel plate ADA detection toe rail
- bolt to expansion anchor, set in concrete sidewalk (no attachment/connection to existing building proposed)
- note: all steel frame pieces to be a black powdercoat finish, similar to the railing finish at Good Bar (around the corner from this proposed cafe)



PROPOSED SIDEWALK CAFE
FLATSTICK PUB - PIONEER SQUARE GROUND FLOOR SPACE