

Sounders FC Club World Cup Art Installation

Provide a photo of existing condition of the location where the installation will be installed.



Continued on Page Two

Provide a site plan that shows the location of the installation



Continued on Page Three

Specify if the installation is attached to the ground surface or if it is free standing. If free standing, specify how it is weighted.

The unit is free standing and supported by the weight of itself (est. 300lbs).

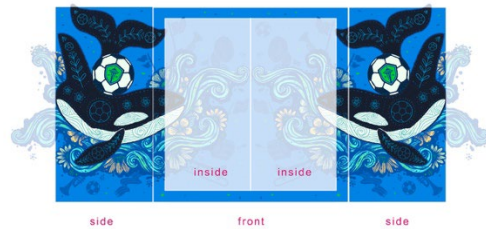
Identify the material the used in the construction.

Materials:

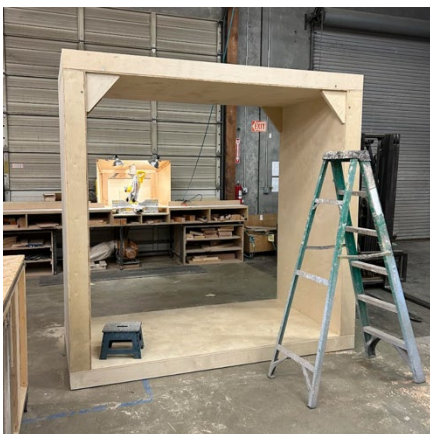
- **The main construction material is plywood of various thicknesses.**
- **Hand painted**

Provide the dimensions.

8' Wide x 8' Tall x 4' Depth (ADA ramp to be added in the back of installation, step up will be roughly 6 inches, which the ramp will compensate for).



Additional Photo (Structure Build):



If there will be any lighting include that in the application.

No lighting