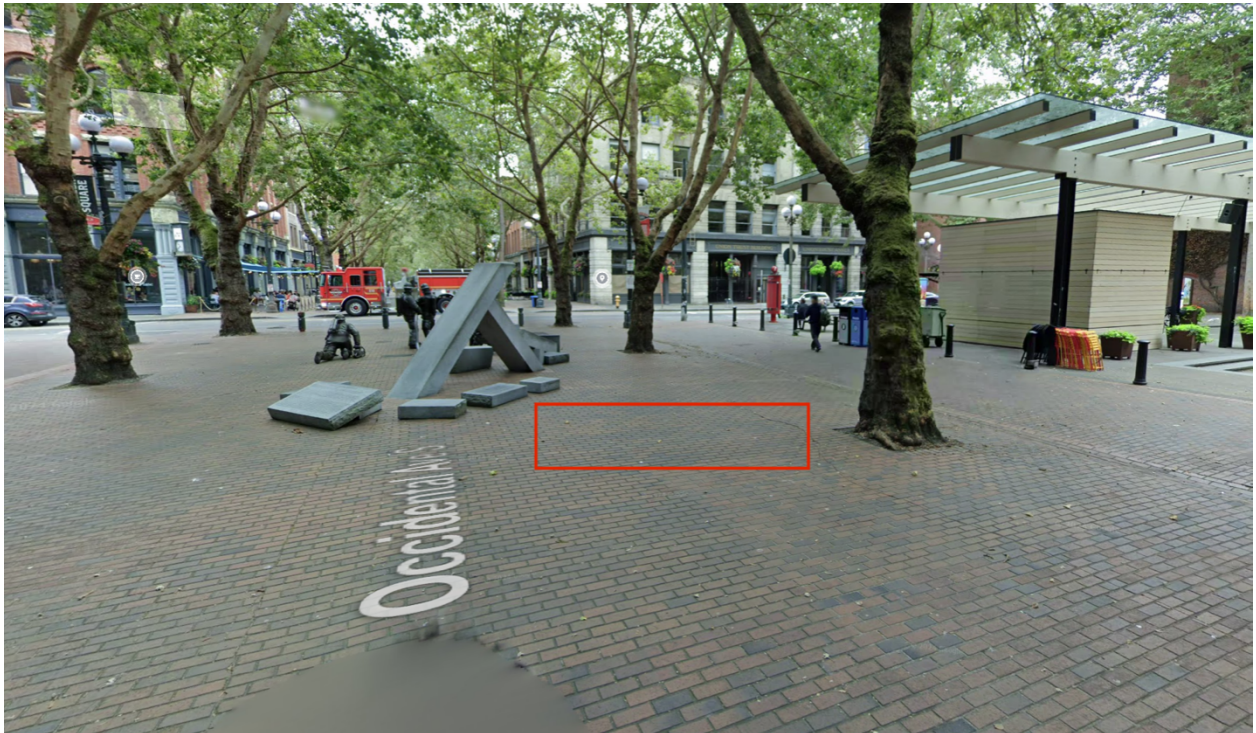


Sounders FC Club World Cup

Art Installation

Provide a photo of existing condition of the location where the installation will be installed.



Continued on Page Two

Provide a site plan that shows the location of the installation



*Continued on Page Three*

Specify if the installation is attached to the ground surface or if it is free standing. If free standing, specify how it is weighted.

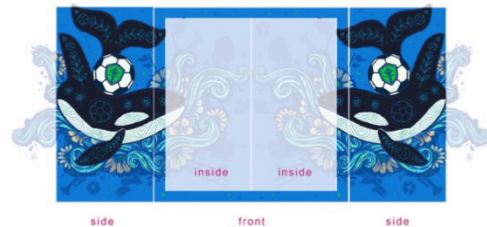
**The unit is free standing and supported by the weight of itself.**

Identify the material the used in the construction.

**Materials: The main construction material is plywood of various thicknesses.**

Provide the dimensions.

**8' Wide x 8' Tall x 8' Depth**



If there will be any lighting include that in the application.

**No lighting**