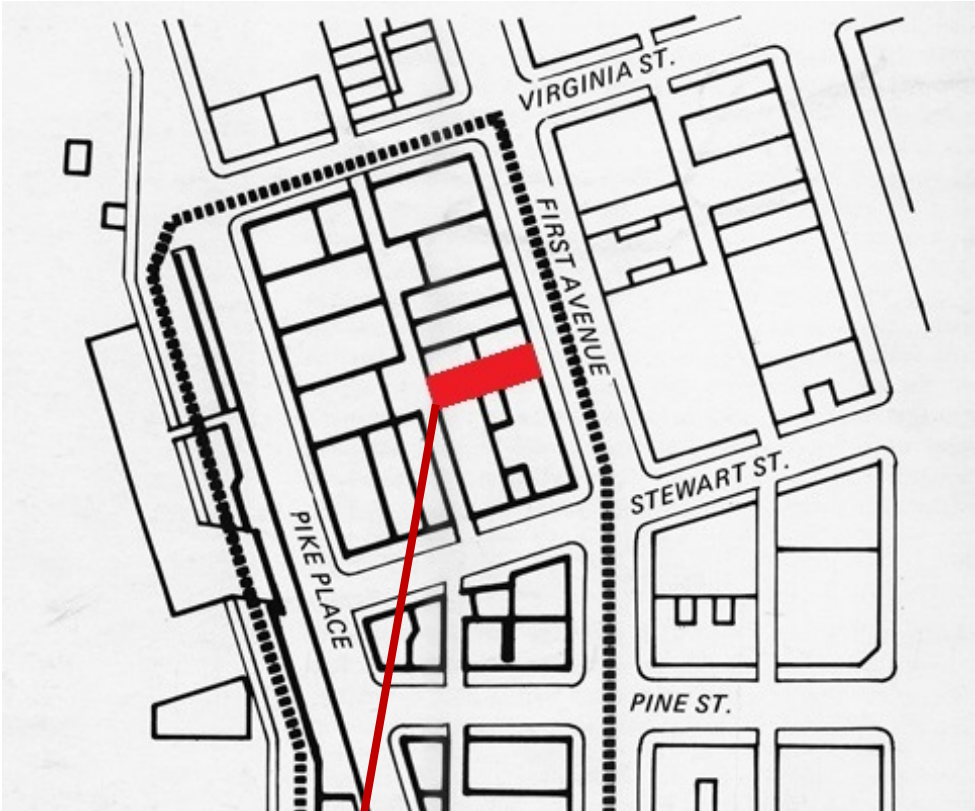


Site Plan



Site Location

1914 Post Alley

Seattle WA 98101

Owner's Statement

El Callejón

El Callejón is looking to become the favorite Latin venue in Seattle. Here you will find a lively atmosphere with a wide variety of delicious Peruvian food, great cocktails, and the best styles of Latino music.

Located in Post Alley in the heart of Seattle, El Callejón will surely be an eye-catching wooden restaurant and bar, and a popular spot suitable for all types of people who want to gather for an unforgettable experience.

From Ceviche and Lomo Saltado to Churrasco Steak, the menu will offer hearty traditional Peruvian and Latin gastronomy for all ages lunch or dinner at our restaurant, or an unforgettable Latin evening with cocktails at our bar for people 21+.

This place will set the right mood for the different and multicultural crowds that will frequent different days of the week, with special events nights like the already famous Latino Wednesday night event "Noche en El Callejón".

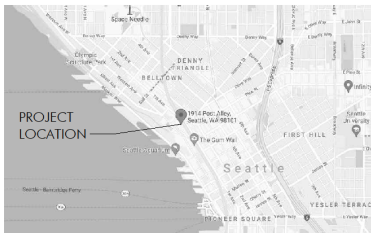
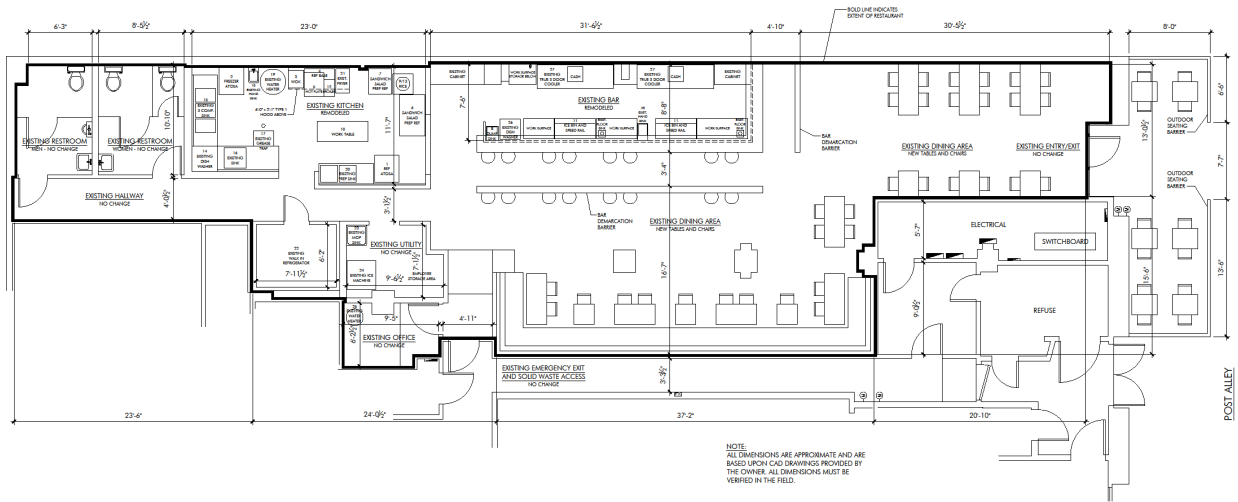
El Callejón is a truly beautiful place, reminiscent of Latin days in South America, with its Latin decor, perfect lighting, rustic colors, bar, and wooden furniture.

Nothing is overlooked in creating the perfect inviting, cozy, fun, and comfortable ambience to enjoy amazing meals or drinks, either inside or in our outdoor terrace with covered outdoor seating, available for the perfect sunny summer days in Seattle.

El Callejón is a family owned and operated business, and we are very excited to become part of the Pike Place Market family.

- Julio Rodriguez

Floor Plan



EQUIPMENT LIST

NEW EQUIPMENT	MAKE	MODEL
1. REFRIGERATOR	ATOSA	REFR102R
2. WIC RANGERS	ATOSA	WIC100R
3. WIC RANGERS	ATOSA	WIC100R
4. COUNTERTOP RANGERS	ATOSA	ACH14
5. SANITIZER REFRIGERATOR	ATOSA	REFR102R
6. DUMP SINK	ATOSA	MS1014
7. WIC SINK	ATOSA	WIC100R
8. WIC SINK	ATOSA	WIC100R
9. WIC SINK	ATOSA	WIC100R
10. WIC SINK	ATOSA	WIC100R
11. 1/2" SINK W/ DRAIN	ATOSA	WIC100R
12. 1/2" SINK W/ DRAIN	ATOSA	WIC100R
13. 1/2" SINK W/ DRAIN	ATOSA	WIC100R
14. 1/2" SINK W/ DRAIN	ATOSA	WIC100R
15. 1/2" SINK W/ DRAIN	ATOSA	WIC100R
16. 1/2" SINK W/ DRAIN	ATOSA	WIC100R
17. 1/2" SINK W/ DRAIN	ATOSA	WIC100R
18. 1/2" SINK W/ DRAIN	ATOSA	WIC100R
19. 1/2" SINK W/ DRAIN	ATOSA	WIC100R
20. 1/2" SINK W/ DRAIN	ATOSA	WIC100R
21. 1/2" SINK W/ DRAIN	ATOSA	WIC100R
22. 1/2" SINK W/ DRAIN	ATOSA	WIC100R
23. 1/2" SINK W/ DRAIN	ATOSA	WIC100R
24. 1/2" SINK W/ DRAIN	ATOSA	WIC100R
25. 1/2" SINK W/ DRAIN	ATOSA	WIC100R
26. 1/2" SINK W/ DRAIN	ATOSA	WIC100R
27. 1/2" SINK W/ DRAIN	ATOSA	WIC100R
28. 1/2" SINK W/ DRAIN	ATOSA	WIC100R
29. 1/2" SINK W/ DRAIN	ATOSA	WIC100R
30. 1/2" SINK W/ DRAIN	ATOSA	WIC100R

FLOOR PLAN

SCALE: 1/8" = 1'-0"

FLOOR PLAN NOTES:

1. ALL CHANGES SHALL BE MADE WITHOUT PUBLIC HEALTH AND KING COUNTY APPROVAL.
2. ALL WORK SHALL BE IN ACCORDANCE WITH THE 2018 INTERNATIONAL RESIDENTIAL CODE AND THE 2018 INTERNATIONAL FIRE AND SAFETY CODE.
3. ALL WORK SHALL BE IN ACCORDANCE WITH THE 2018 INTERNATIONAL MECHANICAL AND PLUMBING CODE AND THE 2018 INTERNATIONAL ELECTRICAL CODE.
4. ALL WORK SHALL BE IN ACCORDANCE WITH THE 2018 INTERNATIONAL BUILDING CODE AND THE 2018 INTERNATIONAL ENERGY EFFICIENCY CODE.
5. ALL WORK SHALL BE IN ACCORDANCE WITH THE 2018 INTERNATIONAL PLUMBING AND MECHANICAL CODE AND THE 2018 INTERNATIONAL ELECTRICAL CODE.
6. ALL WORK SHALL BE IN ACCORDANCE WITH THE 2018 INTERNATIONAL FIRE AND SAFETY CODE AND THE 2018 INTERNATIONAL MECHANICAL AND PLUMBING CODE.
7. ALL WORK SHALL BE IN ACCORDANCE WITH THE 2018 INTERNATIONAL BUILDING CODE AND THE 2018 INTERNATIONAL ENERGY EFFICIENCY CODE.
8. ALL WORK SHALL BE IN ACCORDANCE WITH THE 2018 INTERNATIONAL PLUMBING AND MECHANICAL CODE AND THE 2018 INTERNATIONAL ELECTRICAL CODE.
9. ALL WORK SHALL BE IN ACCORDANCE WITH THE 2018 INTERNATIONAL FIRE AND SAFETY CODE AND THE 2018 INTERNATIONAL MECHANICAL AND PLUMBING CODE.
10. ALL WORK SHALL BE IN ACCORDANCE WITH THE 2018 INTERNATIONAL BUILDING CODE AND THE 2018 INTERNATIONAL ENERGY EFFICIENCY CODE.
11. ALL WORK SHALL BE IN ACCORDANCE WITH THE 2018 INTERNATIONAL PLUMBING AND MECHANICAL CODE AND THE 2018 INTERNATIONAL ELECTRICAL CODE.
12. ALL WORK SHALL BE IN ACCORDANCE WITH THE 2018 INTERNATIONAL FIRE AND SAFETY CODE AND THE 2018 INTERNATIONAL MECHANICAL AND PLUMBING CODE.
13. ALL WORK SHALL BE IN ACCORDANCE WITH THE 2018 INTERNATIONAL BUILDING CODE AND THE 2018 INTERNATIONAL ENERGY EFFICIENCY CODE.
14. ALL WORK SHALL BE IN ACCORDANCE WITH THE 2018 INTERNATIONAL PLUMBING AND MECHANICAL CODE AND THE 2018 INTERNATIONAL ELECTRICAL CODE.
15. ALL WORK SHALL BE IN ACCORDANCE WITH THE 2018 INTERNATIONAL FIRE AND SAFETY CODE AND THE 2018 INTERNATIONAL MECHANICAL AND PLUMBING CODE.
16. ALL WORK SHALL BE IN ACCORDANCE WITH THE 2018 INTERNATIONAL BUILDING CODE AND THE 2018 INTERNATIONAL ENERGY EFFICIENCY CODE.
17. ALL WORK SHALL BE IN ACCORDANCE WITH THE 2018 INTERNATIONAL PLUMBING AND MECHANICAL CODE AND THE 2018 INTERNATIONAL ELECTRICAL CODE.
18. ALL WORK SHALL BE IN ACCORDANCE WITH THE 2018 INTERNATIONAL FIRE AND SAFETY CODE AND THE 2018 INTERNATIONAL MECHANICAL AND PLUMBING CODE.
19. ALL WORK SHALL BE IN ACCORDANCE WITH THE 2018 INTERNATIONAL BUILDING CODE AND THE 2018 INTERNATIONAL ENERGY EFFICIENCY CODE.
20. ALL WORK SHALL BE IN ACCORDANCE WITH THE 2018 INTERNATIONAL PLUMBING AND MECHANICAL CODE AND THE 2018 INTERNATIONAL ELECTRICAL CODE.
21. ALL WORK SHALL BE IN ACCORDANCE WITH THE 2018 INTERNATIONAL FIRE AND SAFETY CODE AND THE 2018 INTERNATIONAL MECHANICAL AND PLUMBING CODE.
22. ALL WORK SHALL BE IN ACCORDANCE WITH THE 2018 INTERNATIONAL BUILDING CODE AND THE 2018 INTERNATIONAL ENERGY EFFICIENCY CODE.
23. ALL WORK SHALL BE IN ACCORDANCE WITH THE 2018 INTERNATIONAL PLUMBING AND MECHANICAL CODE AND THE 2018 INTERNATIONAL ELECTRICAL CODE.
24. ALL WORK SHALL BE IN ACCORDANCE WITH THE 2018 INTERNATIONAL FIRE AND SAFETY CODE AND THE 2018 INTERNATIONAL MECHANICAL AND PLUMBING CODE.
25. ALL WORK SHALL BE IN ACCORDANCE WITH THE 2018 INTERNATIONAL BUILDING CODE AND THE 2018 INTERNATIONAL ENERGY EFFICIENCY CODE.
26. ALL WORK SHALL BE IN ACCORDANCE WITH THE 2018 INTERNATIONAL PLUMBING AND MECHANICAL CODE AND THE 2018 INTERNATIONAL ELECTRICAL CODE.
27. ALL WORK SHALL BE IN ACCORDANCE WITH THE 2018 INTERNATIONAL FIRE AND SAFETY CODE AND THE 2018 INTERNATIONAL MECHANICAL AND PLUMBING CODE.
28. ALL WORK SHALL BE IN ACCORDANCE WITH THE 2018 INTERNATIONAL BUILDING CODE AND THE 2018 INTERNATIONAL ENERGY EFFICIENCY CODE.
29. ALL WORK SHALL BE IN ACCORDANCE WITH THE 2018 INTERNATIONAL PLUMBING AND MECHANICAL CODE AND THE 2018 INTERNATIONAL ELECTRICAL CODE.
30. ALL WORK SHALL BE IN ACCORDANCE WITH THE 2018 INTERNATIONAL FIRE AND SAFETY CODE AND THE 2018 INTERNATIONAL MECHANICAL AND PLUMBING CODE.

EL CALLEJON

DEVELOPER: MARK EL CALLEJON
 OWNER: JASON RODRIGUEZ
 PHONE: 206-899-9344
 ADDRESS: 1914 POST ALLEY
 SEATTLE, WA 98101

ARCHITECT: MIKE PETERSON
 PHONE: 206-276-9638



MIKE PETERSON
 ARCHITECT
 P.O. BOX 26022
 SEATTLE, WA 98114
 206-276-9638

EL CALLEJON
 1914 POST ALLEY
 SEATTLE, WA 98101

DATE: 06/05/21 PROJECT NO: 9509

A2.1

Callejon Menu

wednesday to sunday

Appetizers. 12 pm to 9 pm

Ceviche	18.00
Causa a cevichada.....	12.00
Causa de camarones.....	14.00
Peruvian wings.....	12.00
Solterito arequipeño.....	10.00

Main Menu 12pm to 9pm

Lomo Saltado.....	25.00
churrasco.....	30.00
Pasta alo Macho	25.00
Pasta ala huancaína con Lomo saltato ...	25.00
Arroz con mariscos.....	30.00
Arroz Chaufa	25.00
Beef Burger Callejon	15.00
Pulpo ala parrilla	18.00

Late Night Menu. 9 pm to 2 am

Chicken empanada	8.00
Beef empanada	8.00

cheese empanada	8.00
Yucafrita	8.00
Papafrita	7.00

Drinks menu

Callejon Special drinks

Pisco Sour **14.00**

It is prepared with 4 ounces of pure pisco quebranta, 1 ounce of freshly squeezed lemon juice, 1 ounce of syrup, 1/4 ounce of egg white, and 4 ice cubes.

Chilcano **14.00**

It is made with 1 ounce of pisco, half a lemon juice, half a teaspoon of sugar, ice, ginger ale, and a lemon wedge.

Perú Libre **14.00**

It is prepared with 1 ounce of pisco, a lemon wedge, Coca-Cola and ice cubes.

Capitán. **14.00**

It is prepared with 1 ounce of pisco, 1 ounce of red vermouth and ice to taste.

Shot Pisco **12.00**

4 ounces of pure pisco

Drinks

Gin 12.00

Whiskey 14.00

Ron 10.00

Tequila 12.00

Vodka 10.00

Brandy 18.00

Champagne..... 10.00

Beers

Heineken 8.00

Stella 8.00

Pacifico 8.00

Corona 8.00

Modelo 8.00

Blue Moon 8.00

Dos Equis 8.00

Wine

Red wine 8.00

White wine8.00

UNITED STATES OF AMERICA

The State of Washington



Secretary of State

I, **KIM WYMAN**, Secretary of State of the State of Washington and custodian of its seal, hereby issue this

CERTIFICATE OF FORMATION

to

CALLEJON LLC

A WA LIMITED LIABILITY COMPANY, effective on the date indicated below.

Effective Date: 03/26/2021

UBI Number: 604 724 793



Given under my hand and the Seal of the State of Washington at Olympia, the State Capital

A handwritten signature in blue ink that reads "Kim Wyman".

Kim Wyman, Secretary of State

Date Issued: 03/26/2021