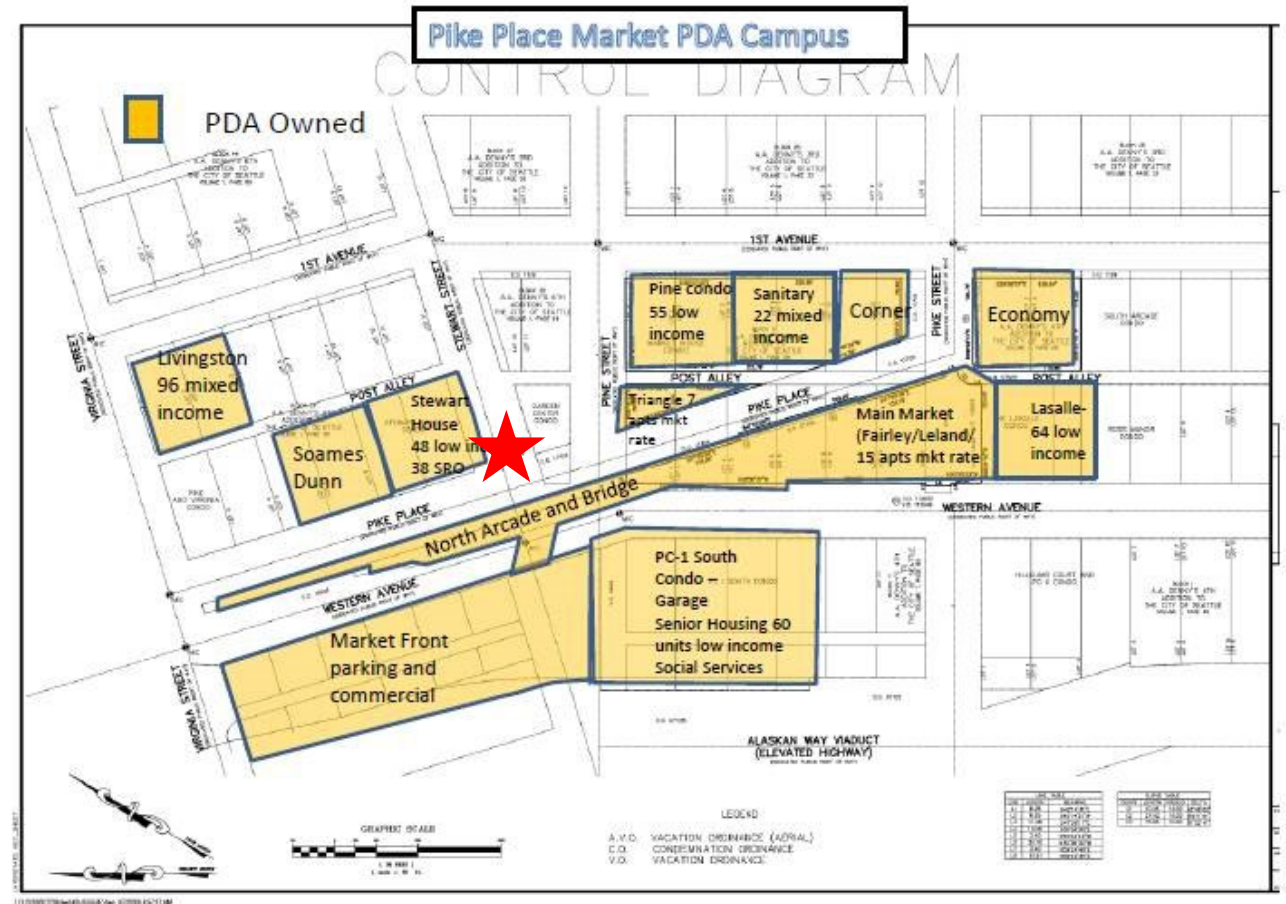


80 Stewart St ADA Ramps

Historic District Commission Briefing

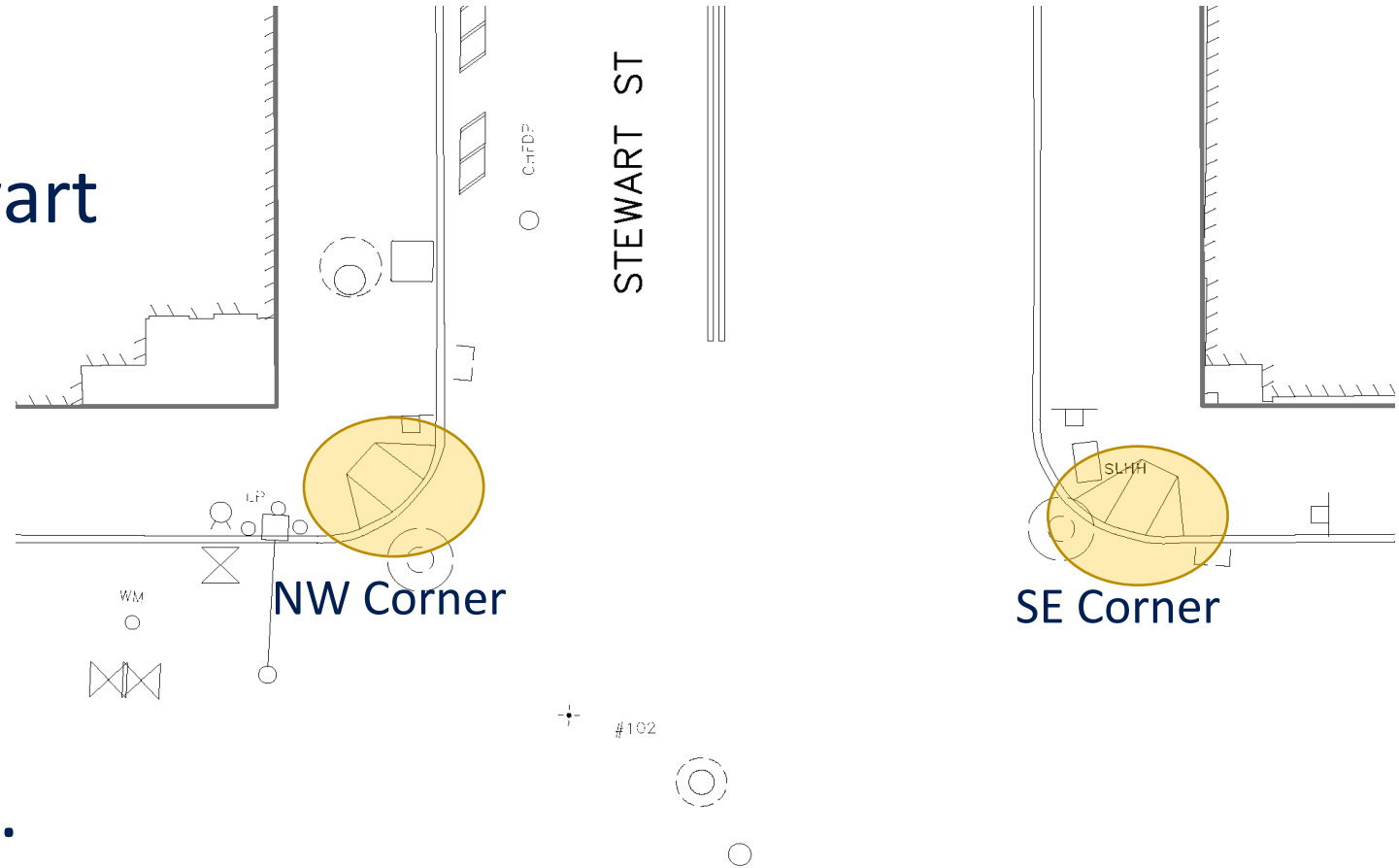
November 13, 2024

Seattle Public Utilities



Stewart & Pike - Existing Ramp Conditions

- Ramps don't point pedestrians across Stewart St.
- Don't have detectable warning
- Non-compliant ramp slopes.
- Non-compliant landings.



Stewart & Pike - Existing Ramp Conditions

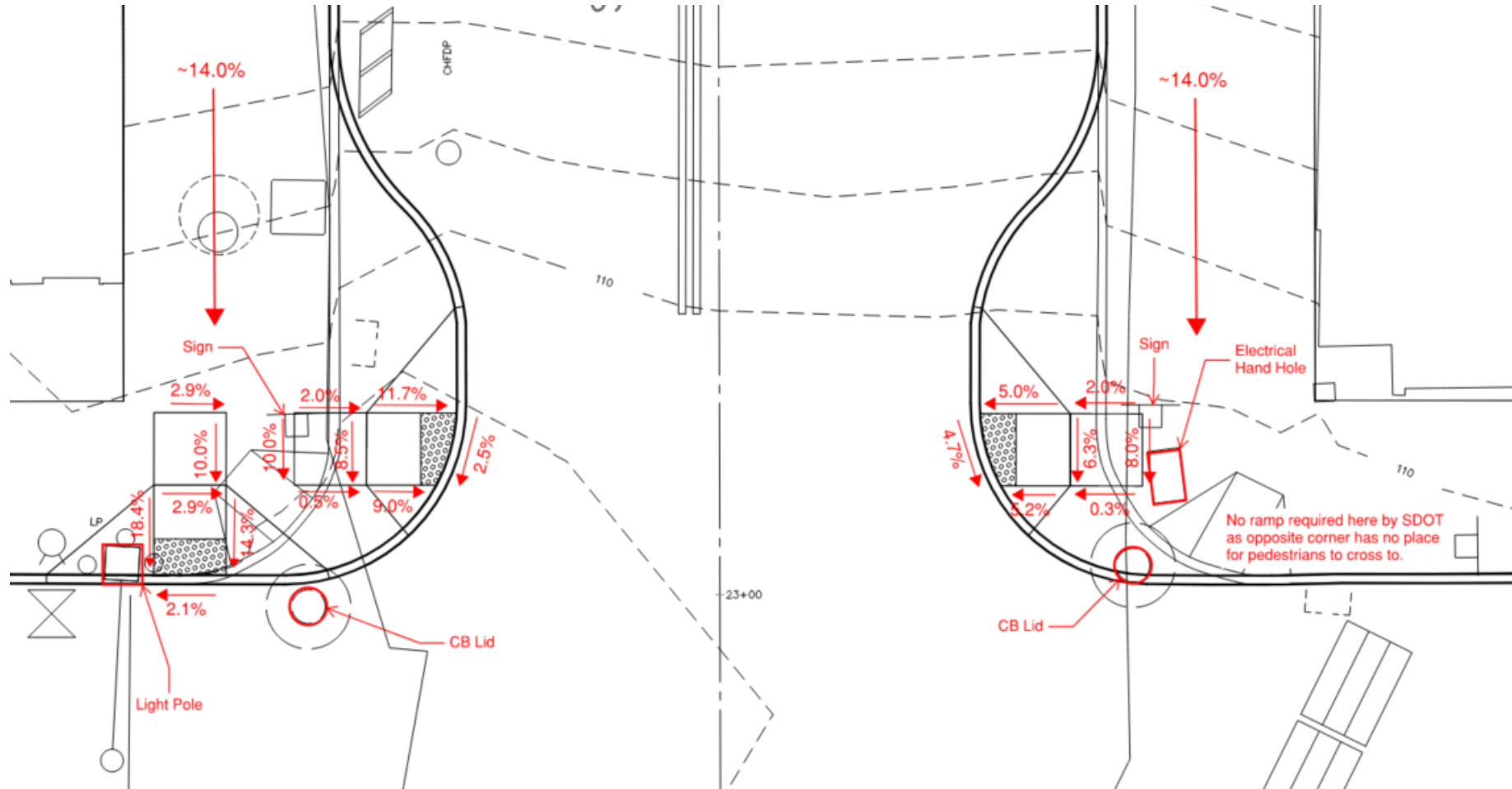


NW Corner

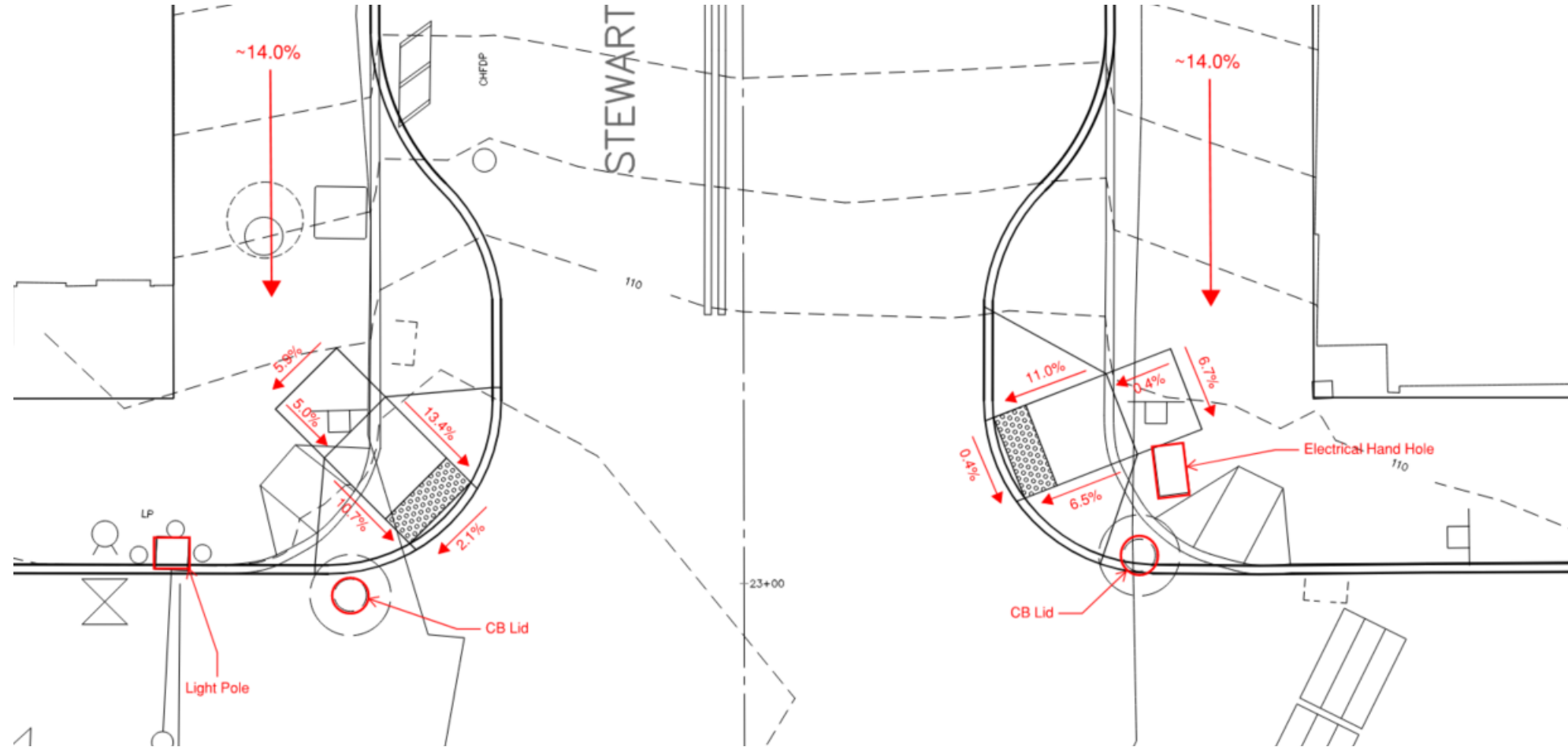


SE Corner

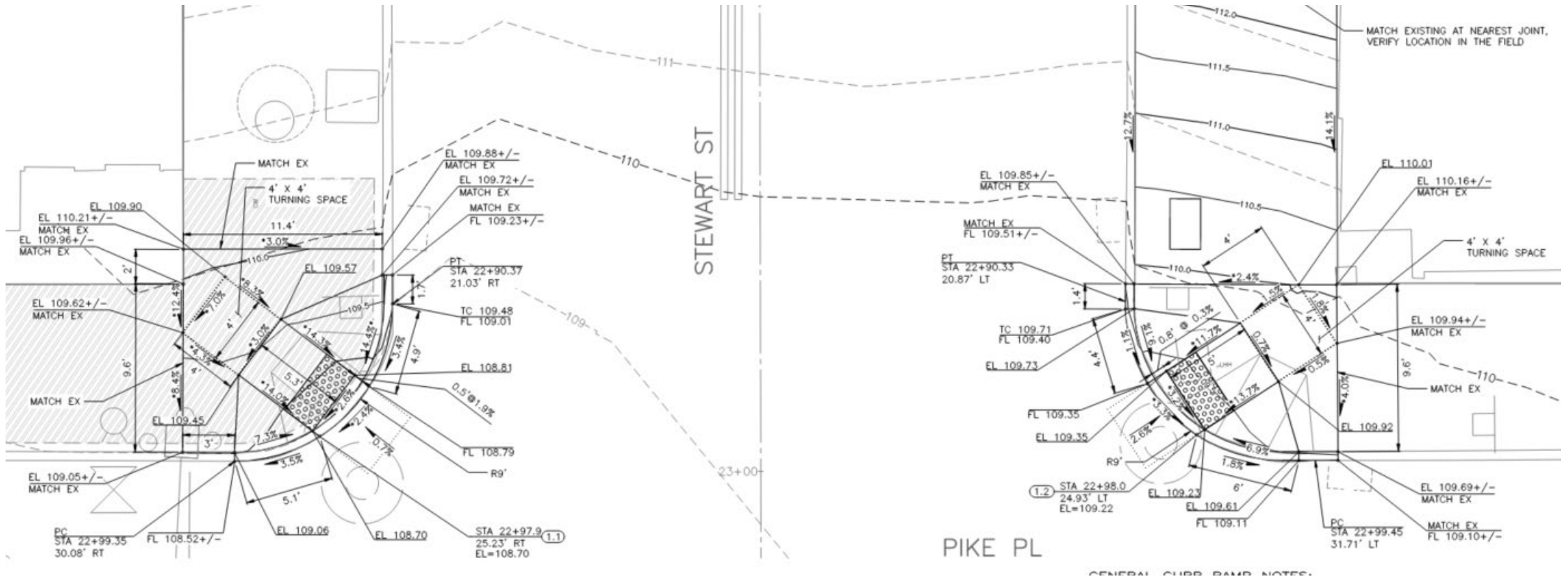
Rejected Alternate 1: Double ADA Ramp



Rejected Alternate 2: Bisector ADA Ramp



Chosen Alternate: Match Existing



Stewart & Pike - Existing Street Conditions

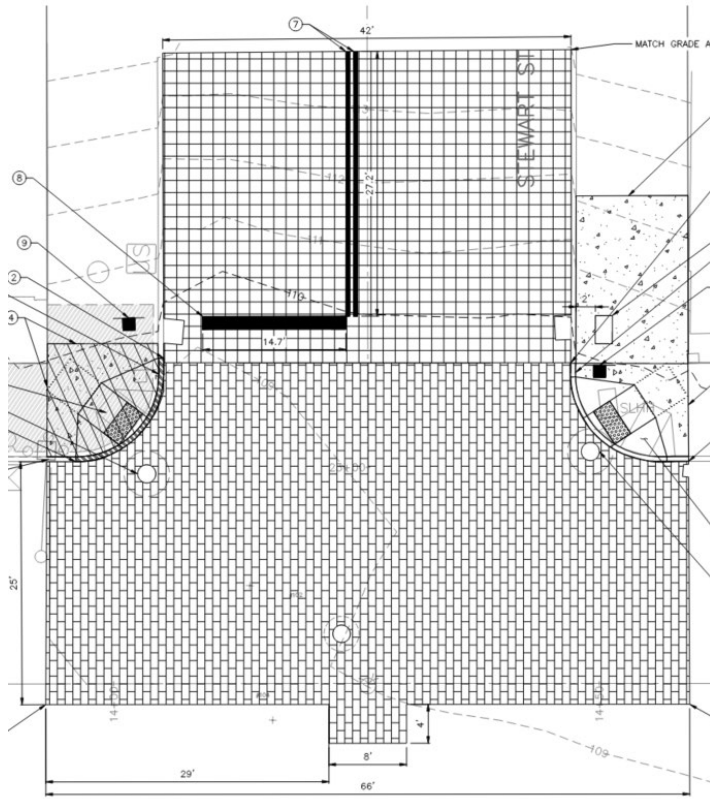


Stewart St at Pike Pl

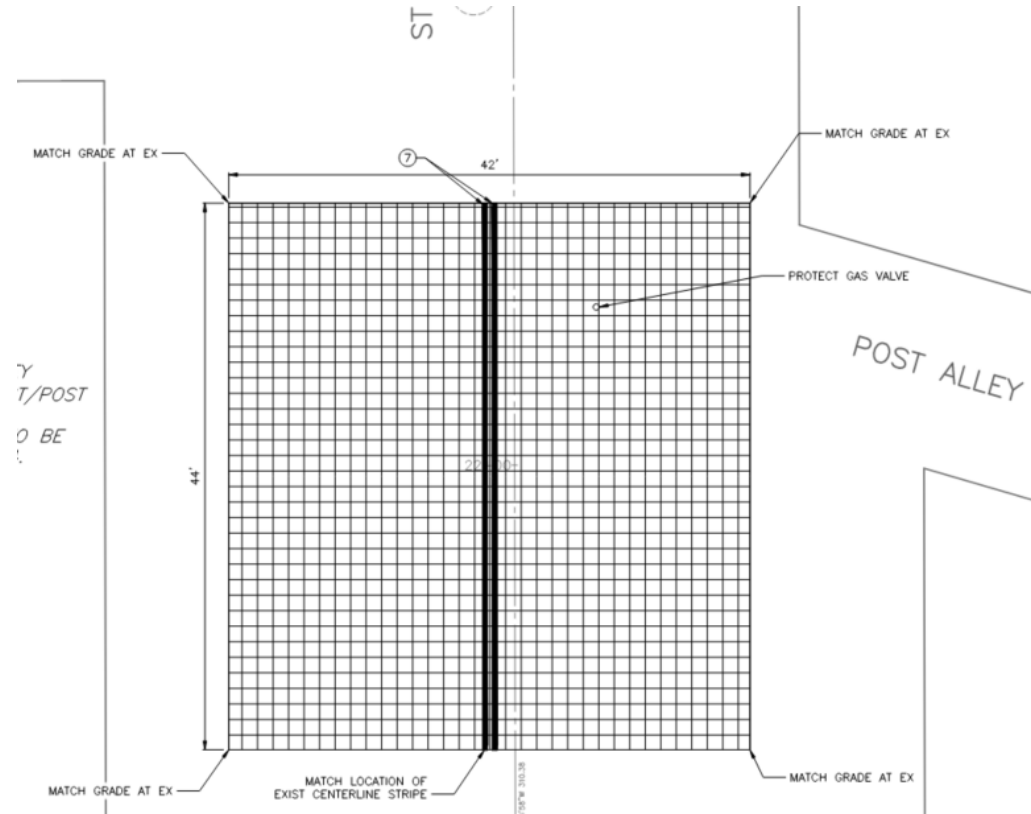


Stewart St at Post Alley

Stewart & Pike - Steet Restoration



Stewart St at Pike Pl
New bricks (Pike Pl)
Salvaged Cobblestones (Stewart St)



Stewart St at Post Alley
Salvaged Cobblestones

Stewart St – New Brick Details



Belden Brick Company: Rembrandt Pavers



Belden Brick Company: Georgian Pavers

SPU has coordinated with DON for approval of a mix of 80% Rembrandt Pavers and 20% Georgian Pavers.

Stewart St – New SDOT Standard Detectable Warning Strip

