

# Ugly Baby

Design Application

# Ugly Baby – 2<sup>nd</sup> Floor Renovation

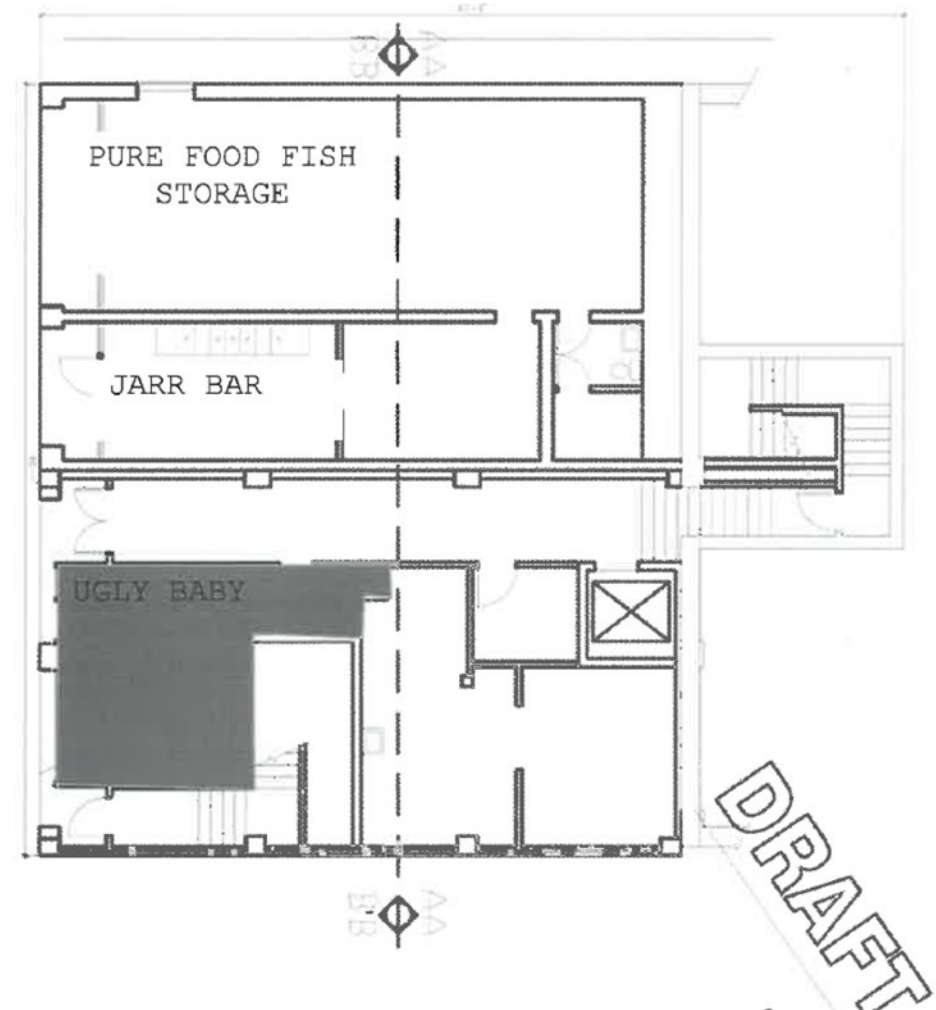
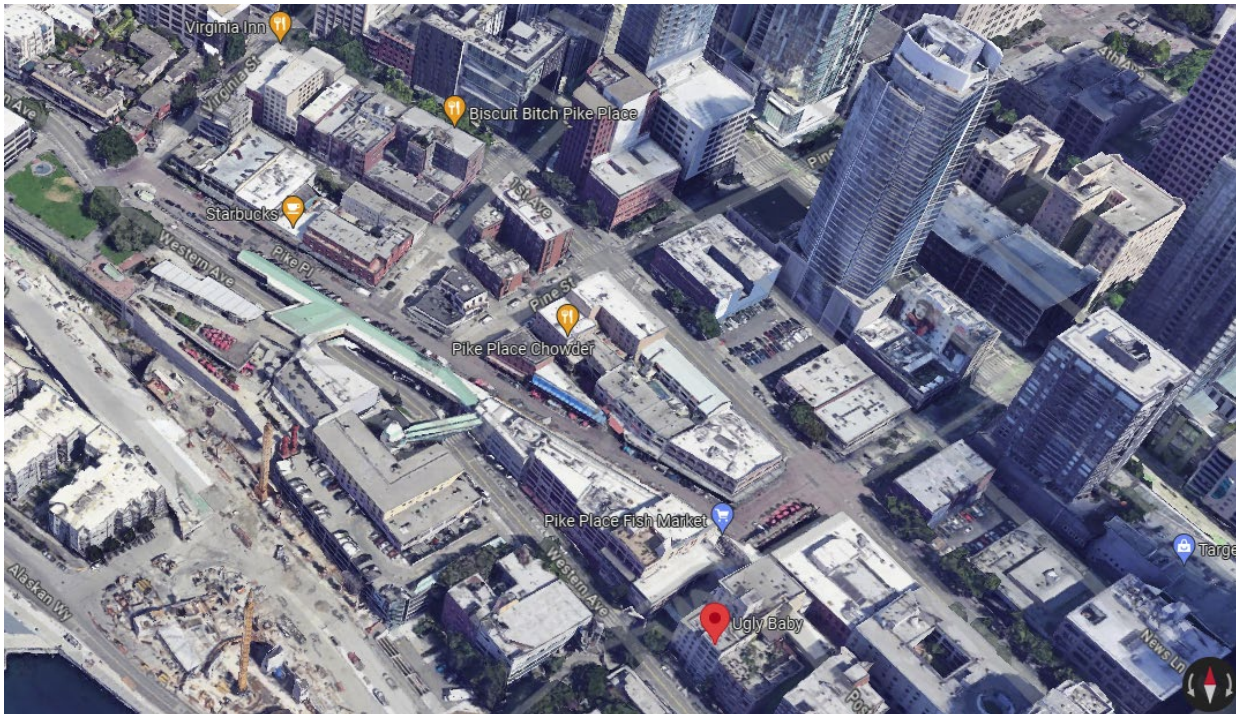
In 2012 when we opened Ugly Baby, the second floor worked as our art studio. It wasn't long before we outgrew it and began creating our items in our offsite studio in Belltown - and now in the Tashiro Kaplan building. Since then, the upstairs has housed our backstock and served as extra storage. When the shop re-opened after the pandemic, we were trying to figure out how to increase our revenue when it hit me - open the upstairs to the public. Almost every single person who crossed our threshold says, "Can I go upstairs?" and we decided to let them.

Our second floor will include a larger selection of unusual greeting cards and DIY craft kits made by independent artists, Shift apron dresses designed and sewn by a one-woman operation in Astoria, OR and will serve as a demo area for my tufted work. On Thursdays - Sundays this summer, we will offer tufting demos in the afternoon and also teach private tufting classes to interested tourists and locals. The second floor will also serve as a gallery of my tufted pieces.

We began this project last year and have managed to clear out the space and scrape 30 years of dust off the pipes and light fixtures but in order to be a clean & functional space, we needed some professional help. We will be painting the upstairs walls, ceiling and floor, the stairs themselves and the second story exterior window sills. We will also be constructing a wooden cover for the exposed water heater, new shelving under the windows and a custom build shelving system that will work around the many, many, many exposed pipes that cover our main wall.

# Ugly Baby – Site Map

Square footage: 656 sf total (combined top and bottom floors).





# Existing Exterior

## Building Facade



## Ugly Baby Storefront



# Existing North Wall





# Existing West Wall

**West upper – south side**



**West Wall Stairs – north side**



# Existing West Wall

**West all Stairs - lower**



**West Wall Stairs - upper**





# Existing East Wall

**North side of east wall**



**Middle of east wall**



**South side of east wall**

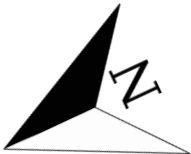




# Proposed New – Floor Plan

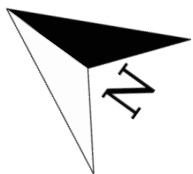
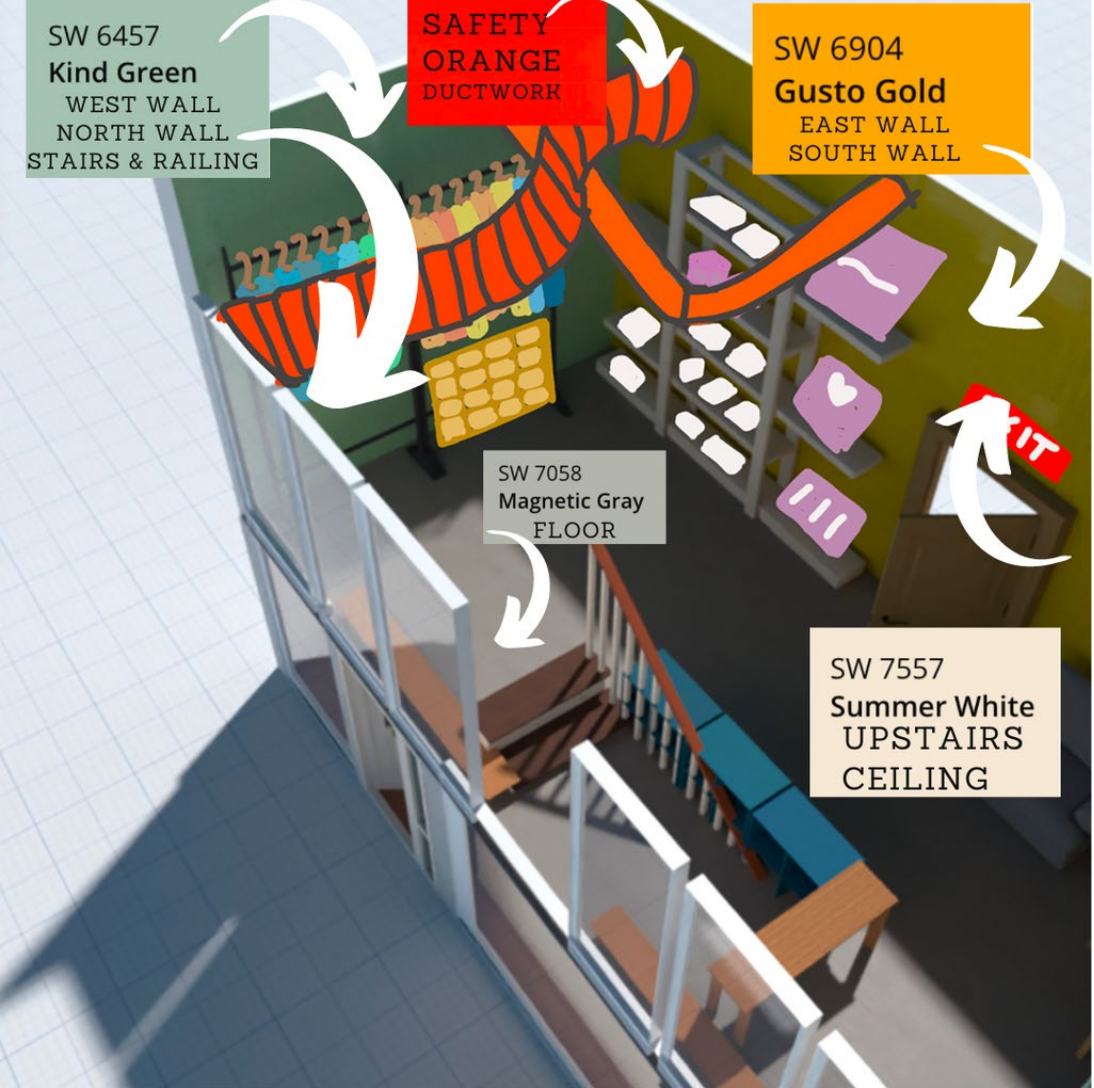


# Proposed New – Floor Plan SW View





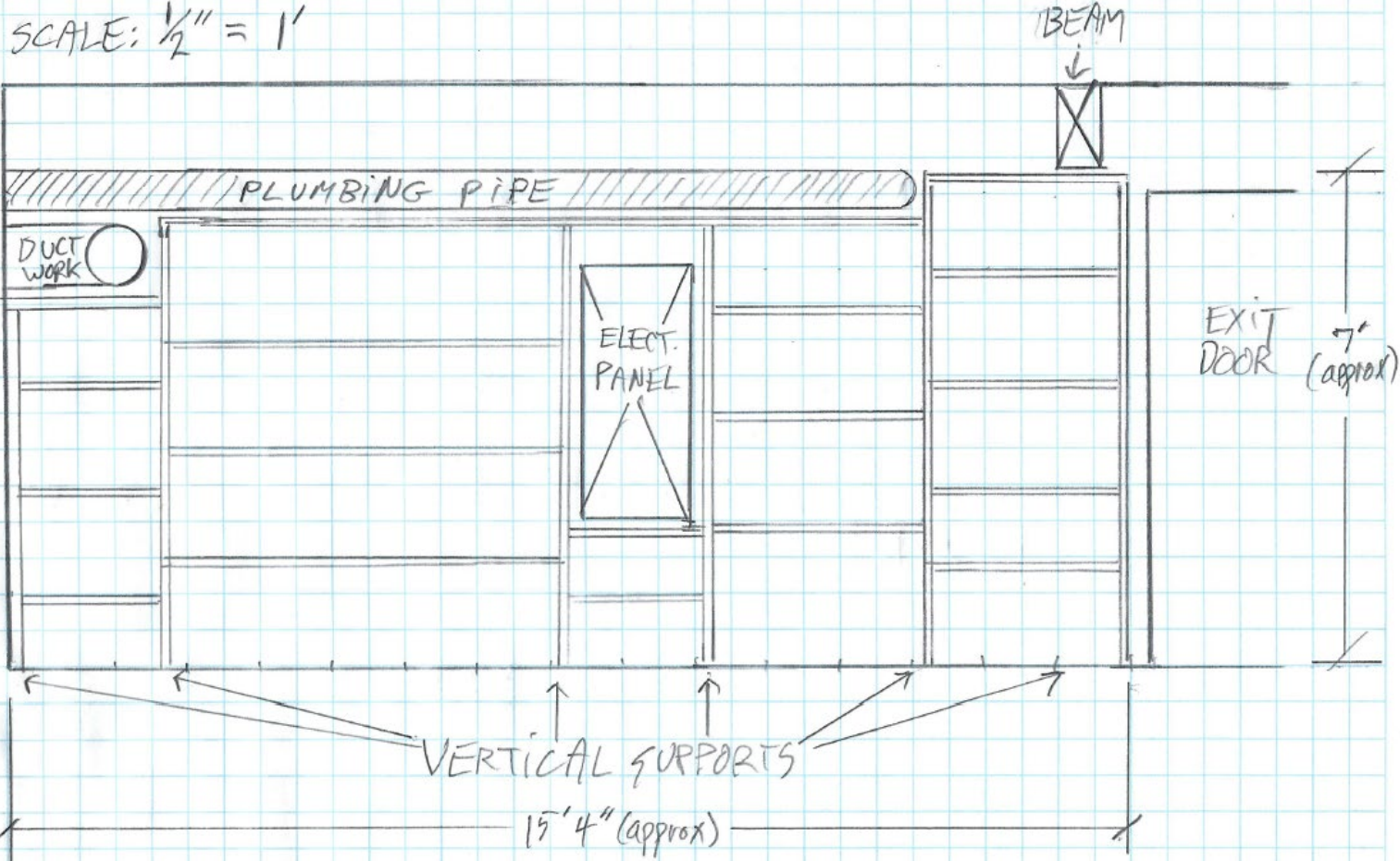
# Proposed New – Floor Plan NE View



# Proposed New – East Wall Shelving

ADJUSTABLE-HEIGHT SHELVING FOR 'UGLY BABY' FEB. 2024

SCALE: 1/2" = 1'



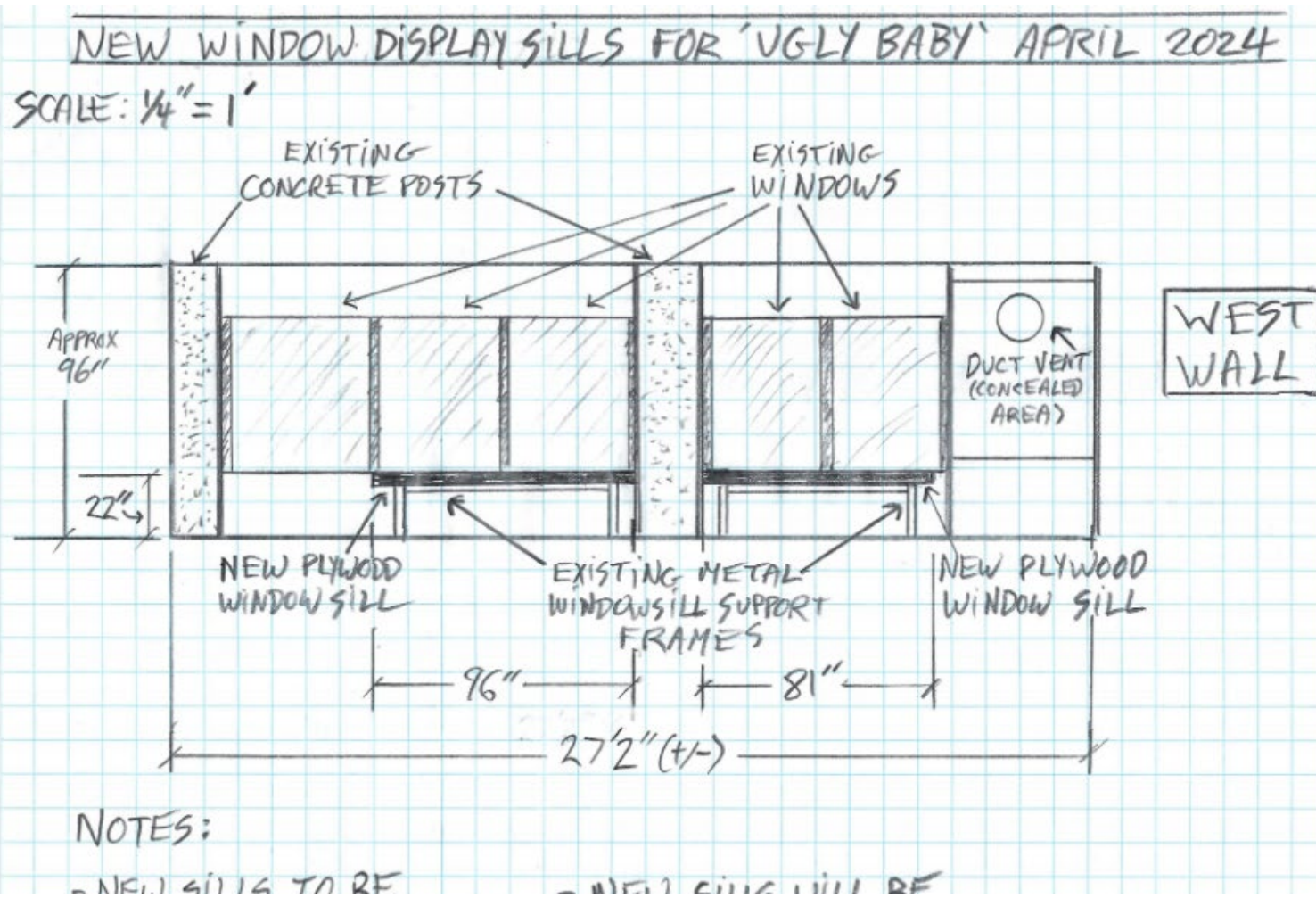
SHELF MATERIALS: 1" X 12" Spruce Lumber



# Existing Window Display Sills

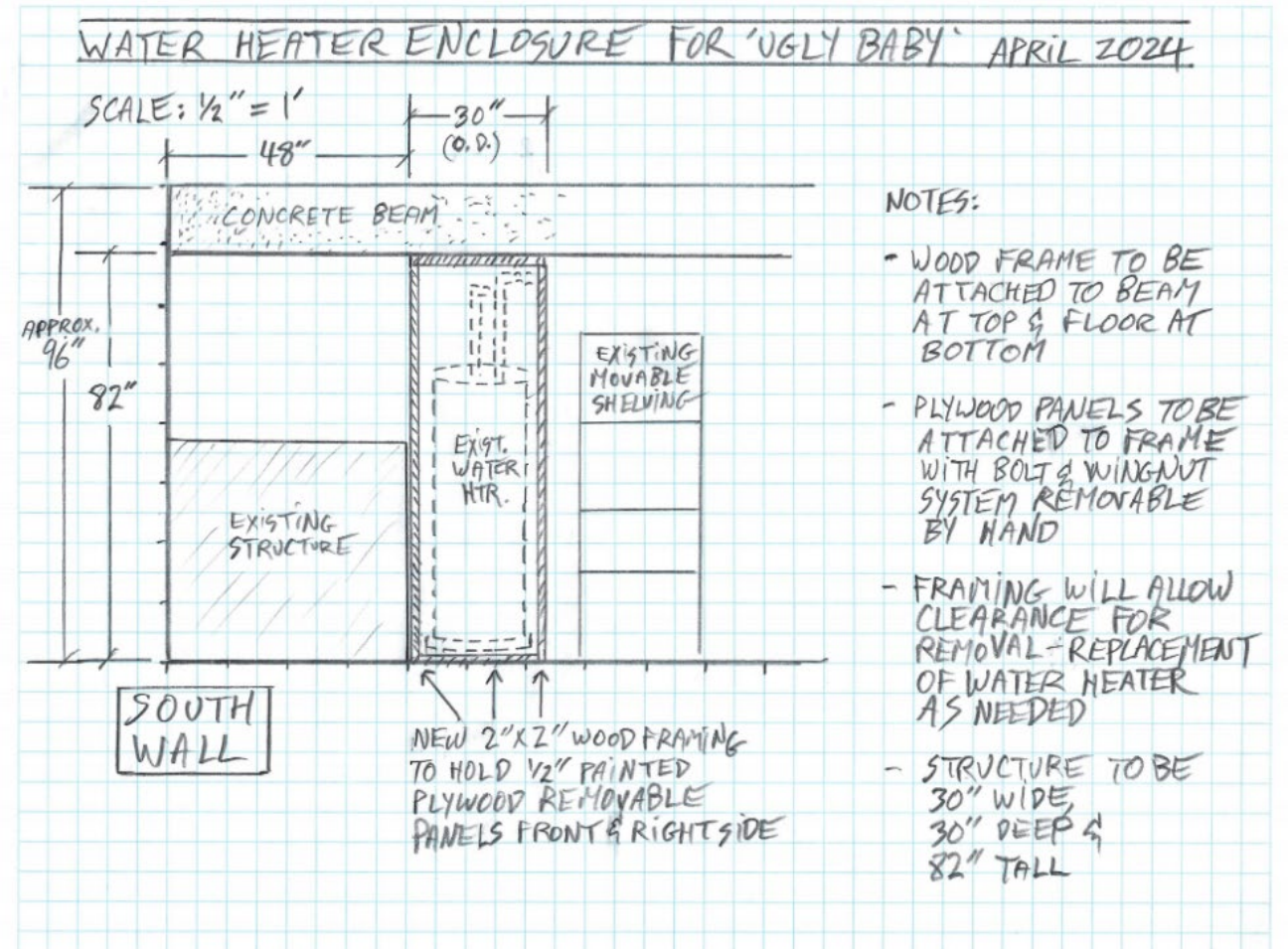


# New Window Display Sills





# Hot Water Heater Detail

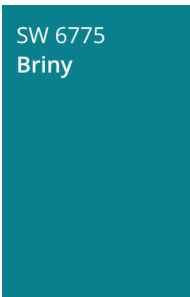


# Painting

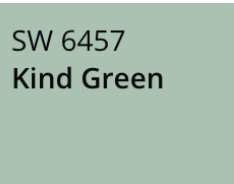
The upstairs is in desperate need of new paint. This will go a long way to update the space. We will paint the walls, ceiling and floor. In addition, we received a separate quote to paint the second floor window trim on the outside of the building to match the ground floor. We weren't able to afford to include the second floor exterior when we were allowed to paint the aqua color on the exterior first floor. We would like to do it in this renovation and feel this will go a long way to tie the first and second floors together from the outside.

## Paint Colors:

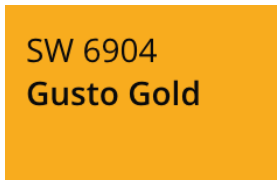
Exterior Color & Color of Stairs and Railings - Sherwin Williams - Briny - SW6775 - same as the ground floor



Interior Wall Color 1: Sherwin Williams - Kind Green - SW6457 - on wall of windows and hanging backstock area.



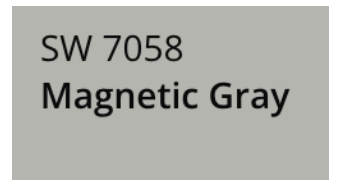
Interior Wall Color 2: Sherwin Williams - Gusto Gold - SQ6904 - Wall behind custom built shelving and wall behind check out desk/tufting demo area.



Ceiling Color: Sherwin Williams - Summer White - SW7557



Floor Color: Sherwin Williams - Magnetic Gray - SW 7058



Duct Color: Brand TBD - safety orange - ductwork on left side of room



# Building Materials

Spruce and plywood shelving. The upstairs is a tangled web of pipes that make any furniture difficult to fit. We have received a quote from our handyman (see below) to fit custom shelving that will fit around the pipes. It will also be adjustable to allow us to change the height of the shelves. This shelving unit will be approximately 15 feet of wood adjustable shelving that will run from the second floor exit to the far wall.

Water Heater Enclosure. The water heater is unsightly and our handyman will build an enclosure for it with a door for access. It will have hooks on the outside that will allow us to hang the yarn cones for the tufting demos and classes.

Windowsill Upgrade. New plywood will be installed over the existing sills (2) with a lip on the inside.

Existing floor is plywood and will remain in place