

PIKE PLACE MARKET

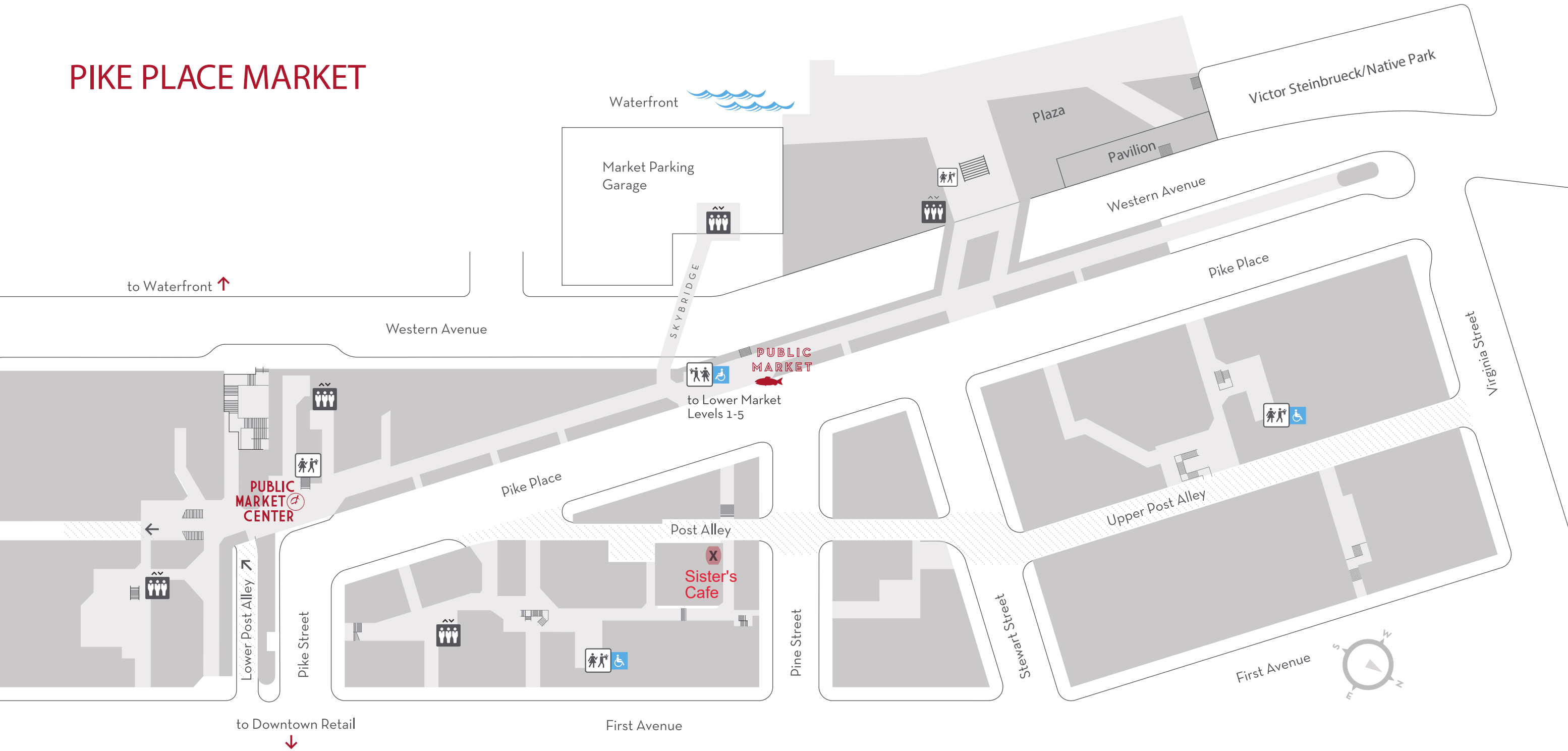
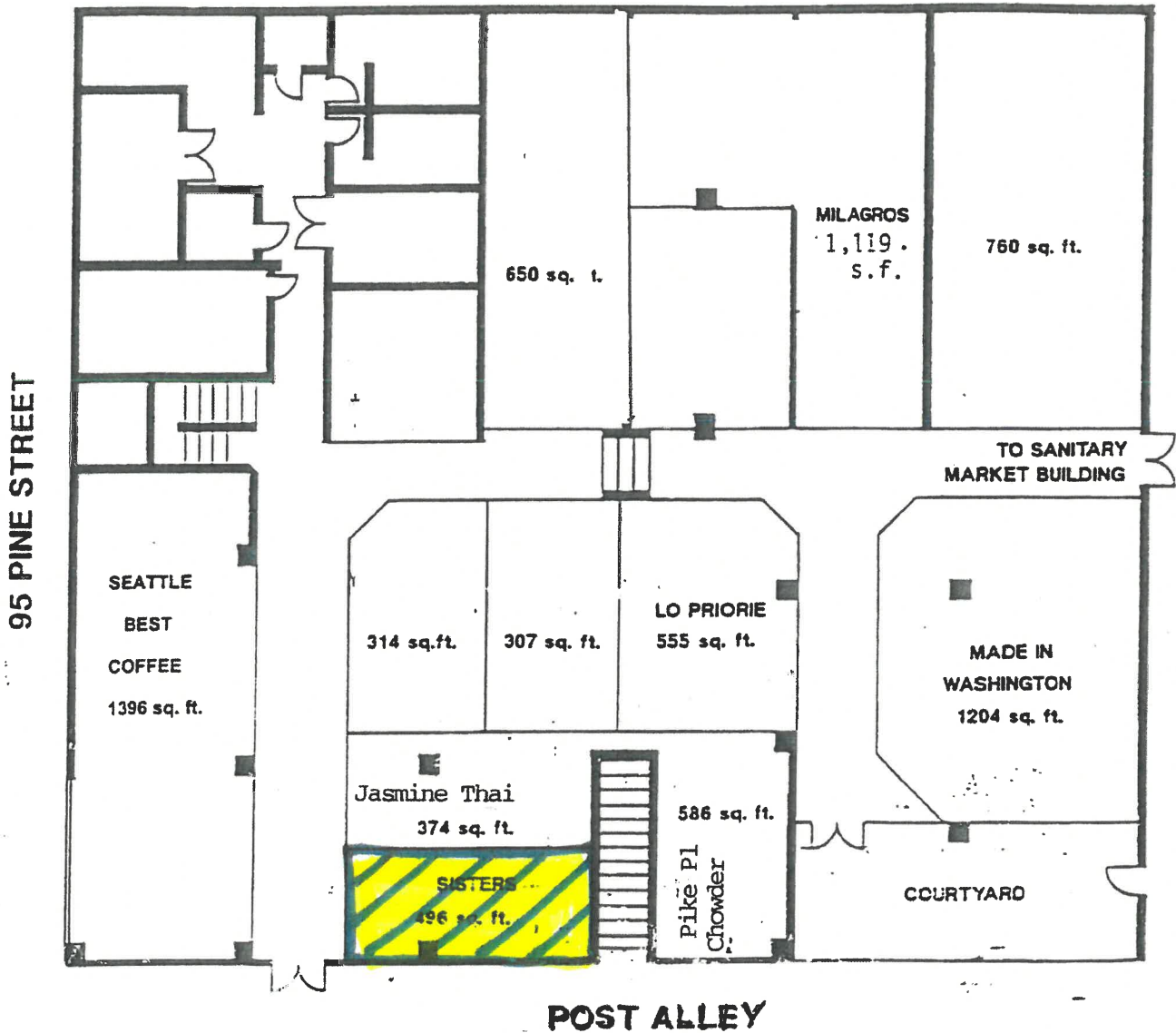




EXHIBIT B

Sister's European Cafe - 496 SF



Existing Garage Rollup Door

East facing from outside



Checklist Questions:

- 1. Dimensions of existing roll-up door 16'-7" W X 10' H and proposed door framing dimensions rough opening is 17'-7.5", actual door 17'-7" which leaves 1/4" each side for expansion and contraction.**
- 2. Photos below of existing door closed outside and inside. Existing track photos below. Vertical tracks will be removed/cut off below bend at south corner that meet horizontal ceiling section and braced with L bracket to hold existing light fixtures in place.**

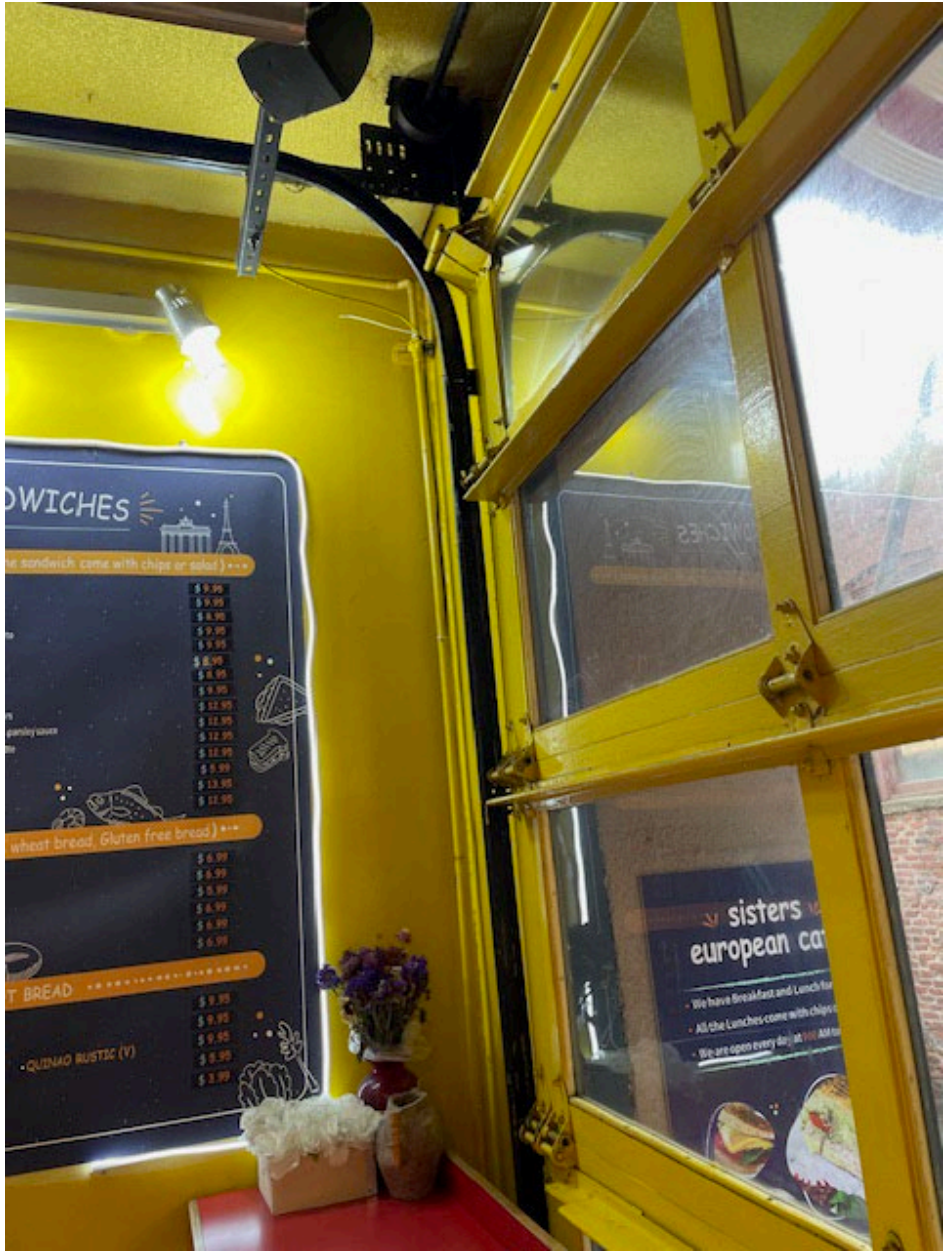




West facing from inside



West facing closed from inside



Existing roll up door track close up west facing left side

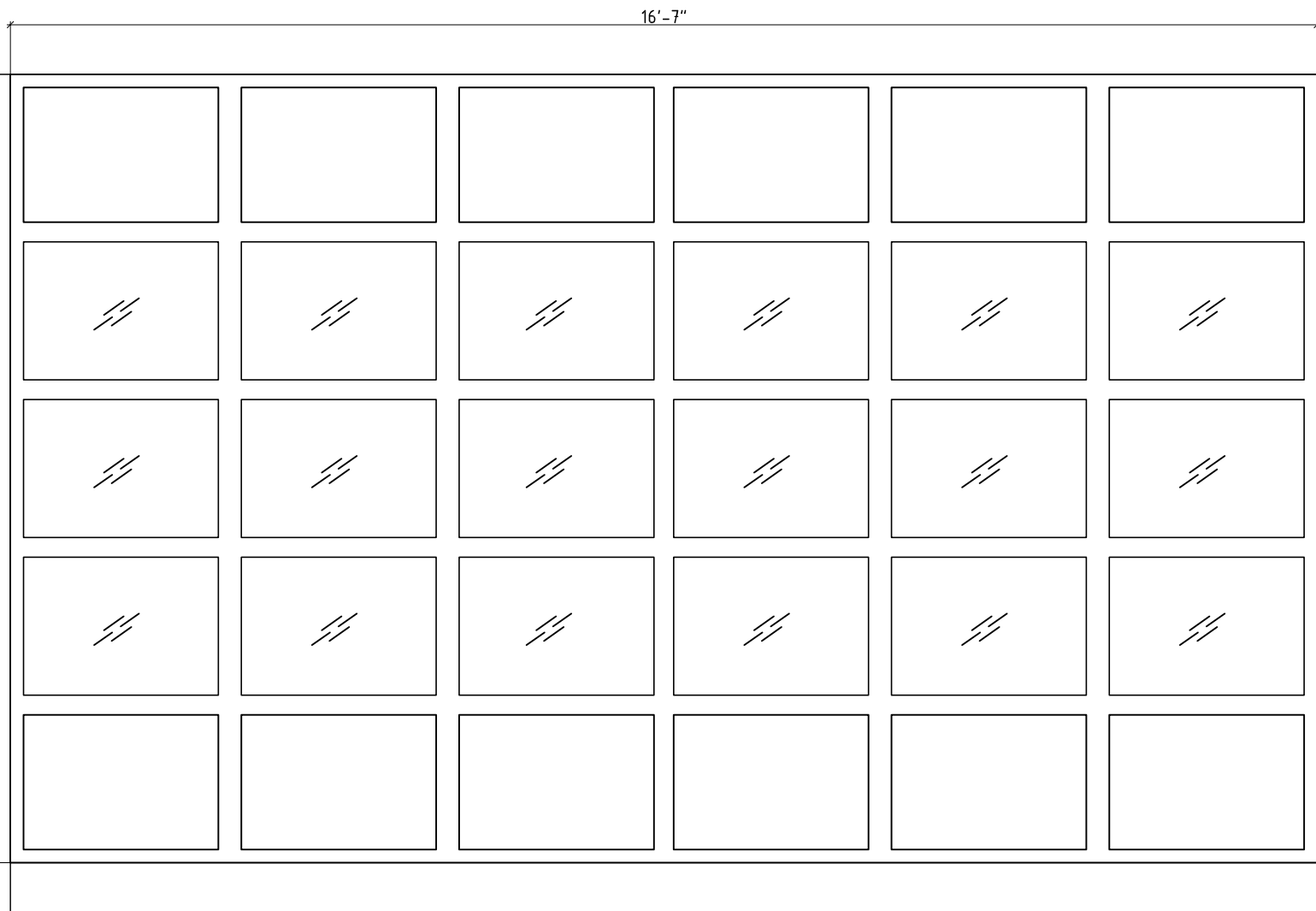


Existing roll up door track

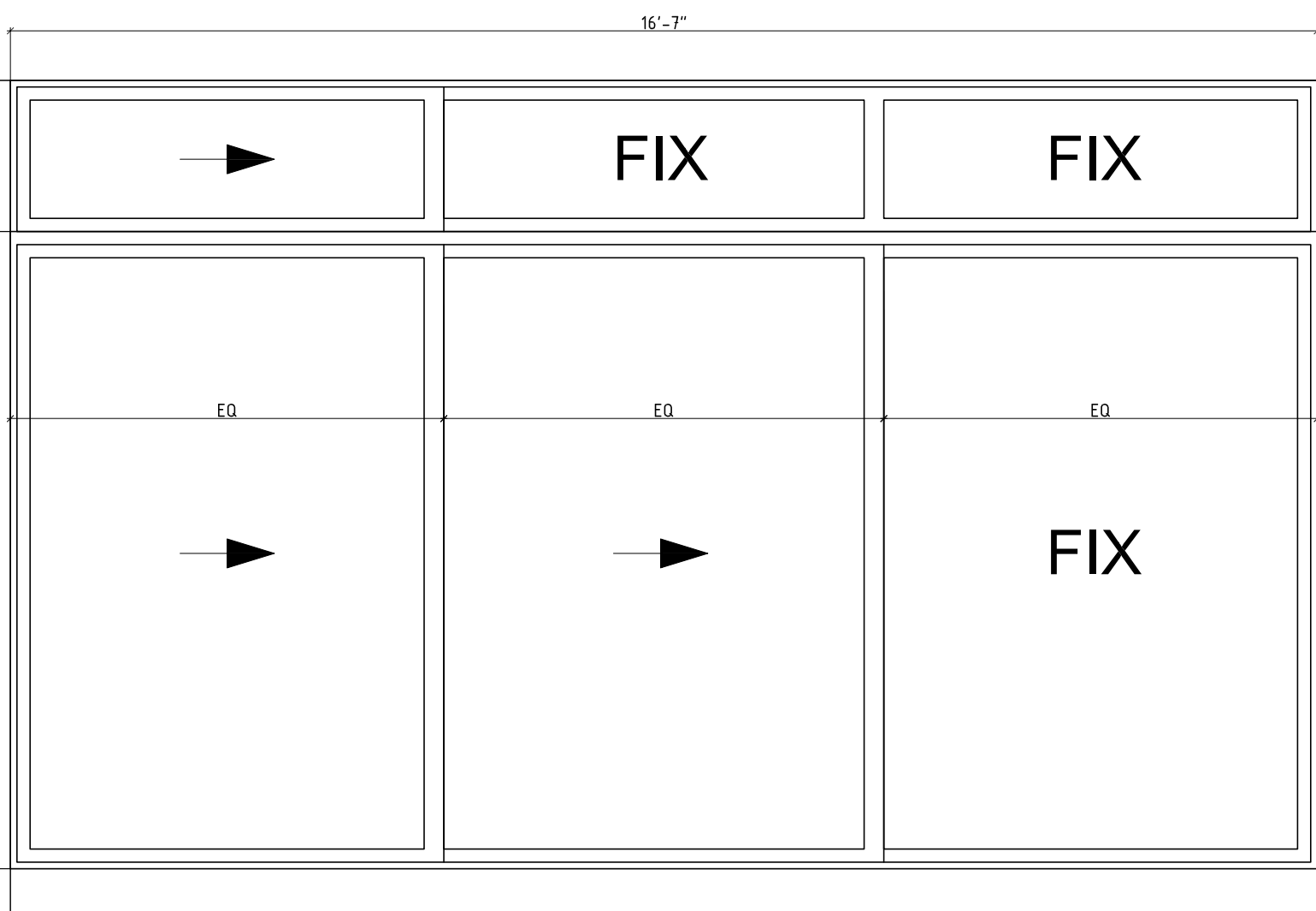


Existing roll up door track close up west facing right side

- 3. Door Hardware is dark bronze aluminum and appears black in color, see installation manual for photo of style.**
- 4. Existing door is made of wood, glass and metal.**
- 5. Installation of new aluminum system track will be secured by #14 4" or ¼-4" screws with horseshoe shim in between every screw @ 8' toll each end and 3 screws on vertical sides and countersink to hide at center of aluminum extrusion. Tracks on bottom attached to floor by a sub sill (j metal) and sub sill screws to ground and covered with silicone. Track snaps in and stays in place and conceals the screws drilled inside concrete frame. The top track is attached with screws to header at 3 points, (each side and center), see installation manual for photos and more details**



Elevation of Existing roll up door to remove

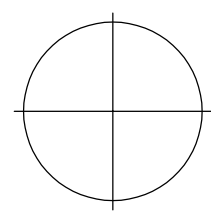


Elevation of Proposed sliding window

Amir Parnianpour
Architect
(818) 294 9005
ahparnian@gmail.com
copyright © 2015 Amir H. Parnianpour, all rights reserved

Babak Hodaie
Sister's window
change

RA100 - Window	
area: 337.78 sf + 811.14 sf+ 847.78 sf	
01/09/2024	Sc. 1/2" = 1'



Eris Home Product

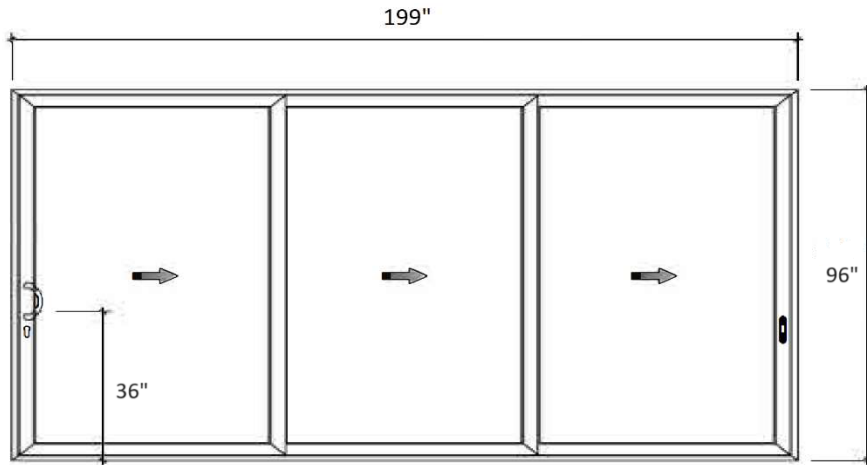
www.erishomeproducts.com

info@erishomeproducts.com

(805)375-6333

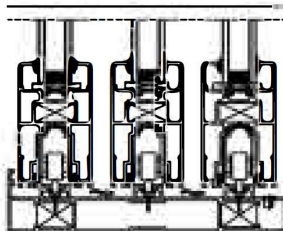
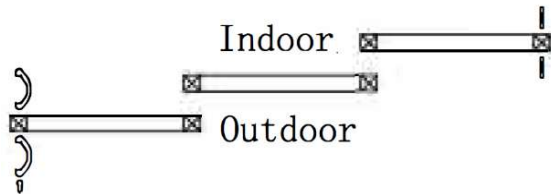
2089 Anchor Court, Newbury park, CA 91320

139-95 series thermal break aluminum Sliding/French door



ID	S-19996-3		
Width:	199	Height:	96
R/O width:	199.5	R/O Height:	96.5

Color:	Black
Glass:	Double Tempered
Track:	Copper Rail
# of Panles:	3
Panel width:	66
Swing	Sliding
Opening style:	To left
Frame assembly:	Required
Hardware:	Included
Gas:	Argon
Price:	\$11,900.00



Looking From Outside to the door

Note:

Eris Home Product

2089 Anchor Court, Newbury park, CA 91320

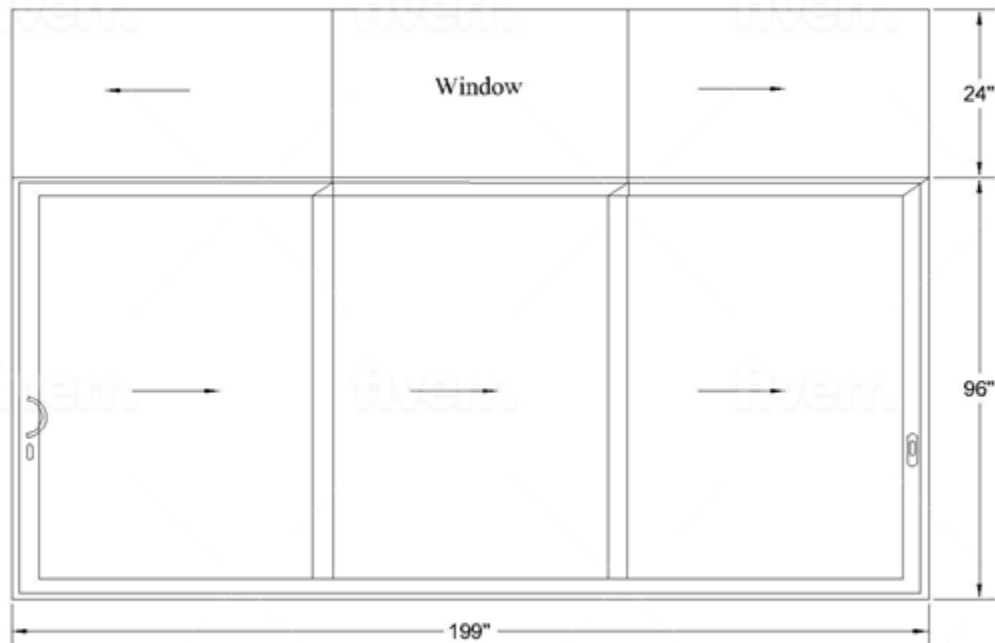
www.crishomeproducts.com

info@crishomeproducts.com

(805)375-6333

4x6 post

4x6 post





ERIS ALUMINUM BIFOLD DOOR INSTALLATION GUIDE

INSTALLATION KIT CONTENTS:



BOTTOM WHEEL & TOP
GUIDE



MAGNET DOOR HOLDER



HANDLE SET



FRAME



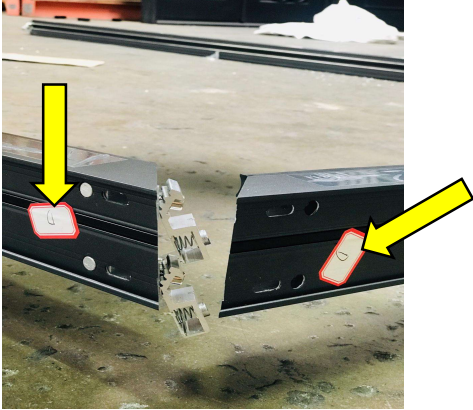
LOCK KNOB



SMALL HANDLE

Frame Assembly

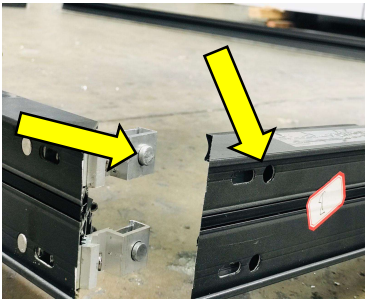
1. Find the correct frame pieces. Matching each letter to corresponding one:



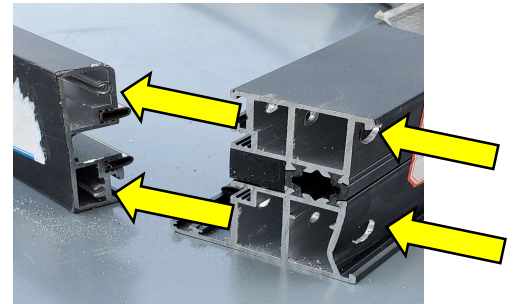
3. Tighten the brackets screws equally until there is no gap between frames.



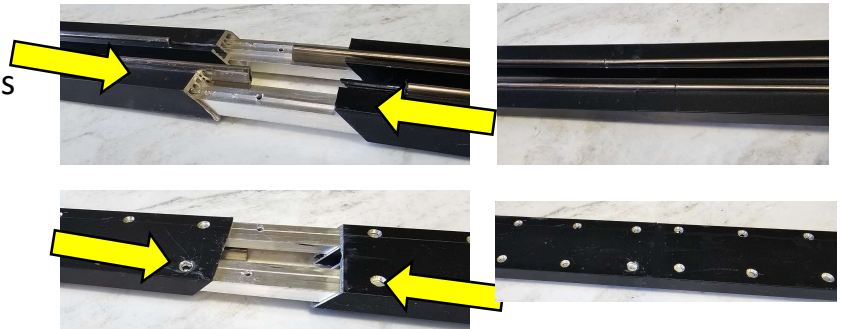
2. Insert the brackets into the frame and make sure the pin gets into the hole.



4. For low bottom track, use the longer screws that came with frame and screw from behind the side pieces into the bottom track.



5. For larger doors top and bottom pieces will come in 2 sections, please put it together with bracket that comes with it and tighten the screws from back side.



Once frame is assembled, place it by the installation location and check the opening size and Floor level

- Recommended opening size is overall frame size +1/2" .
- Check the door's spec sheet to make sure frame is facing the correct way.
- For outswing door, hinge holes will be toward outside of your building and wider side of frame will be toward inside.
- For Inswing door, hinge holes will be toward inside of your building and wider side of frame will be toward outside.
- Drain holes in bottom track should always face outside.



Frame Installation

1. Apply the Liquid Nail under the track and place the frame in the opening.

- Only Liquid Nail is recommended for bottom track for better waterproofing unless floor is not level and you will need to anchor the track to the floor.



2. Drill 7/16 hole into first layer of Side frames for cap and 1/4" hole on the other layers.

- Side needs 4-5 Screws (6" from bottom , 6" from top and other screws spaced equally along the frame).
- Top track needs 2-3 screws spaced equally along the top piece.



3. Make sure frame is level.
Screw the frame to the opening.



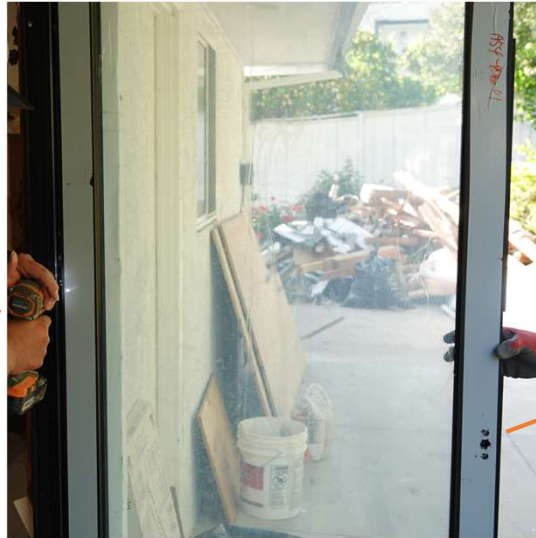
4. Cover hole with plastic cap.



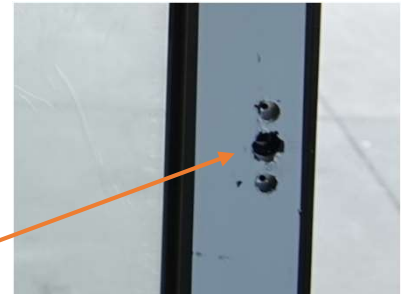
Door Panels Installation

1. Find and install the first folding panel.

- Usually, panels have labels and panel #1 is the first panel.
- If the label is missing the one with 3 small holes on one side is the first panel
- Use the 1" screws for hinges attaching to the frame.

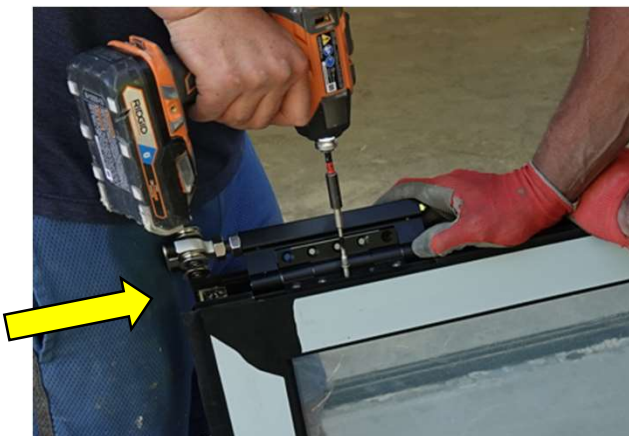


When the door is closed holes in picture below must be inside.



2. Install bottom wheel and top guide to second panel.

- If the label is missing the panel that has D shape handle on it is the second panel.
- Use the 2" screws for attaching wheel and guide to the door panels.



Bottom Wheel



Top guide



3. Place the second panel on the track and top guide in the frame.

Bottom Wheel



Top Guide

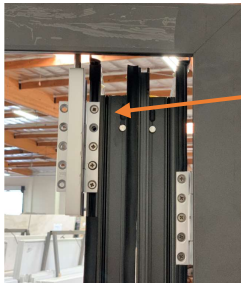
4. Connect the second panel to the first panel.

- Use 2" screws for attaching hinges to the door panels.



5. Connect the third panel to the second panel.

- For 3 panel doors: third panel is labeled #3 or its the one with holes for main handle and lock. Skip step 6.
- Use the 2" screws for attaching hinges to the door panels.



- For 4 panel doors : third panel is labeled #3 or its the one with small lock on side of the door as shown here.



6. Install the panel #4 to the other side of frame.

- Fourth panel is the panel with holes for main handle and lock.
- Use the 1" screws for attaching hinges to the frame.

Hardware installation

1. Install the main handles to the main panel and small handle to the first folding .

- Main lock is 3-point lock, in order to lock the door, pull up the handle, latches will engage and with turning the knob you can disable the handle. Turning the knob by itself will not engage the latches.



2(Optional). Install door magnet or grab catch door holder:

- Door holder is optional and there is no predrilled hole for it, it will be installed between last two folding panels.
- Install it either on top or bottom of the panels.



FULLY ASSEMBLED PRODUCT



For additional information or questions
please contact us



2089 Anchor Ct. Newbury Park, CA 91320

www.erishomeproducts.com

info@erishomeproducts.com

Office: 805.375.6333