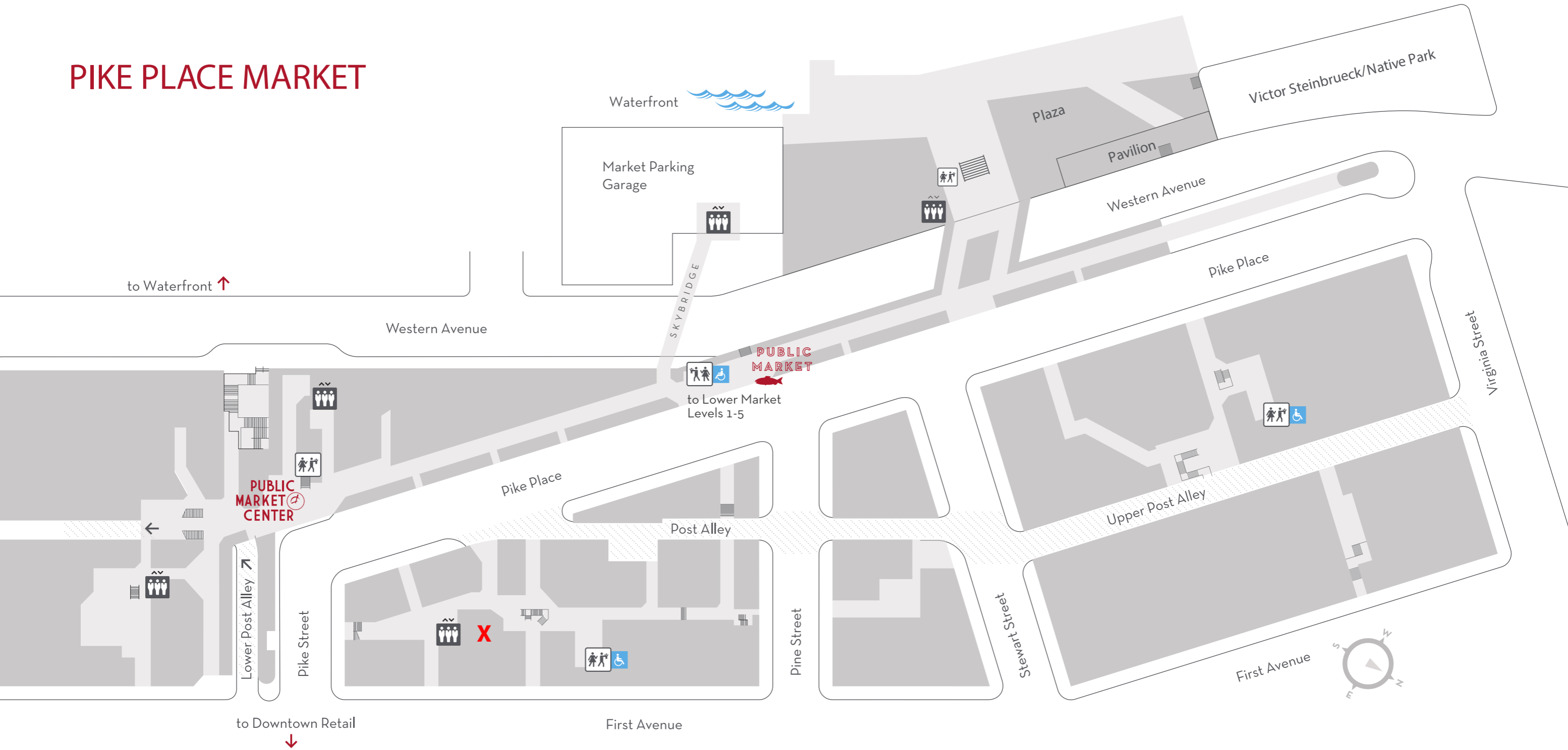


PIKE PLACE MARKET





Specialty Hot Dog Menu

#1 The DeDe - The Owner's favorite

Steamed bun, Signature Cheese Bread Spread, Red Saucie Relish, Momma's Mustard Relish, Original Greens
\$10

#2 The LaLa - Mama's favorite

Steamed bun, Signature Cheese Bread Spread, Red Saucie Relish, Momma's Mustard Relish, Pickled Red Onions
\$10

#3 The MeMe - The Sister's favorite

Steamed bun, Signature Cheese Bread Spread, Red Saucie Relish, Momma's Mustard Relish
\$10

#4 The HeHe - The Spicy Sister's favorite

Steamed bun, Signature Cheese Bread Spread, Pickled Garlic, Pickled Habaneros
\$10

#5 The Chi Chi - Midwest Roots

Steamed bun, Signature Cheese Bread Spread, Sweet & Spicy Pickles, Sour & Spicy Pickles, Momma's Mustard Relish
\$10

#6 The Kid Kid - Just The Basics

Steamed bun, ketchup and mustard packets
\$8

Choice of 100% All Beef Hot Dog OR Field Roast Veggie Dog

All dogs can have any topping removed, including our signature Cheese Bread Spread, just no additions.

Sides of all toppings available for \$.50 ea

Specialty “Signature Cheese Bread Spread” Selections

The Original Pickled Pepper

Signature Cheese Bread Spread on fresh bread with Red Saucie Relish and Momma’s Mustard Relish

\$10

The Smoked, not pickled, Salmon

Signature Cheese Bread Spread on fresh bread, topped with filets of locally Smoked Salmon, Red Saucie Relish and Momma’s Mustard Relish

\$17

The Dungeness

Signature Cheese Bread Spread on fresh bread, topped with Dungeness crab and homemade “tartar salad/sauce” Market Price

The Pickled Pretzel

Locally baked warm German Style Pretzel with our Signature Cheese Bread Spread, Momma’s Mustard Relish and Pickled Red Onions

\$10

Specialty Shaken Mocktails

Miss Mary

Everything a Bloody Mary wishes it could be and also Vegan (no worcestershire)

\$8

Mr Caesar

Just like Miss Mary, but with the sweet nectar of clam juice

\$8

Ms Rose K

West Coast Cape Cod, delicious cranberry refresher with lime

\$8

Mx Lemon S

A fresh squeezed lemon drop, lemon juice, cane sugar and water

\$8

Red Sangria Punch

All the flavors of a red wine based sangria, grape, citrus and cherry

\$8

White Sangria Punch

All the flavors of a white wine based sangria, grape, citrus and peach

\$8

All prices do not include tax or gratuity. Thank you in advance for your support of our small business!



Example only



TASTE
SAMPLES



TASTE
SAMPLES



Example only



Features to Be Altered

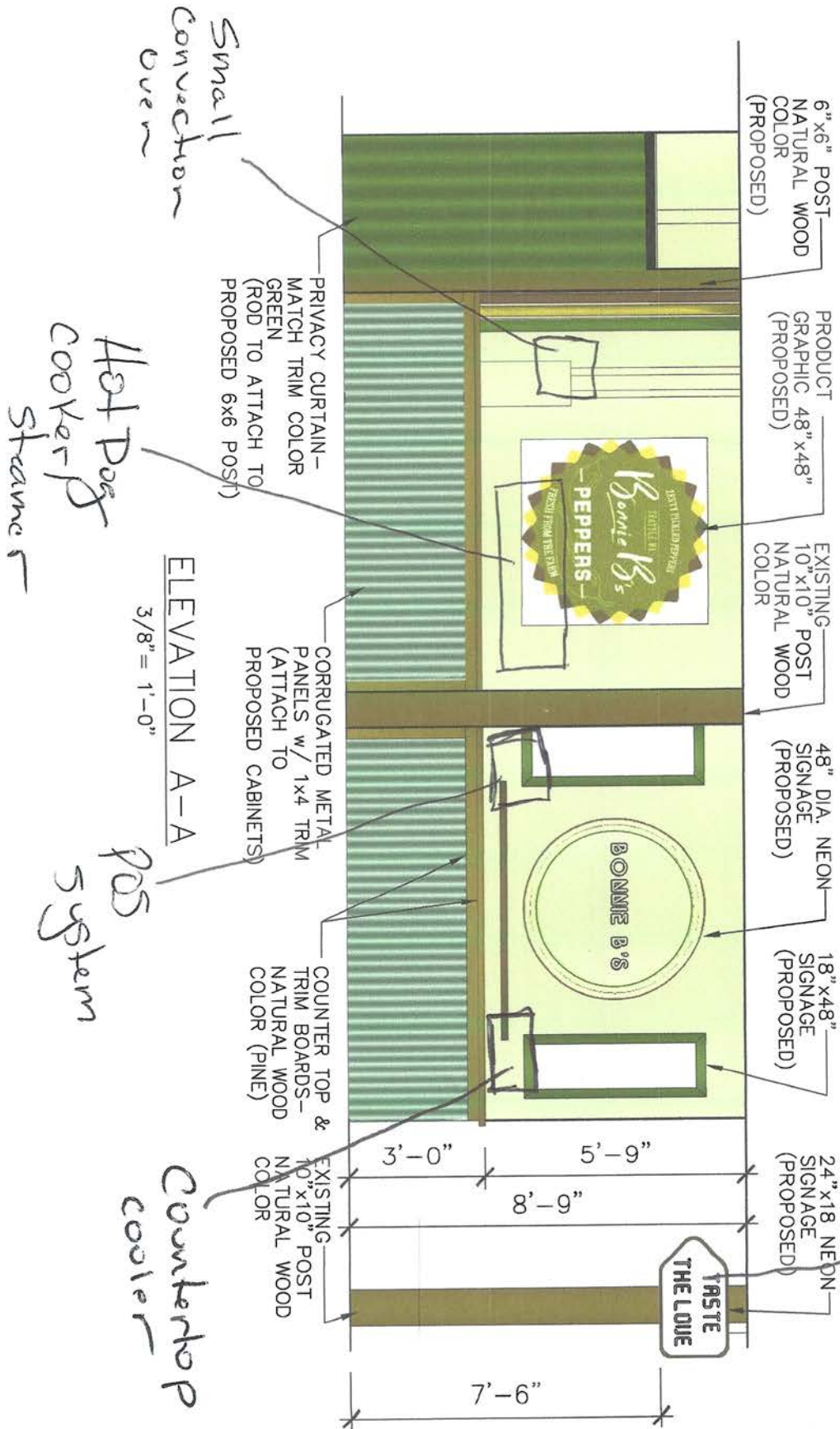








(3) Construction
 (4) Finishes



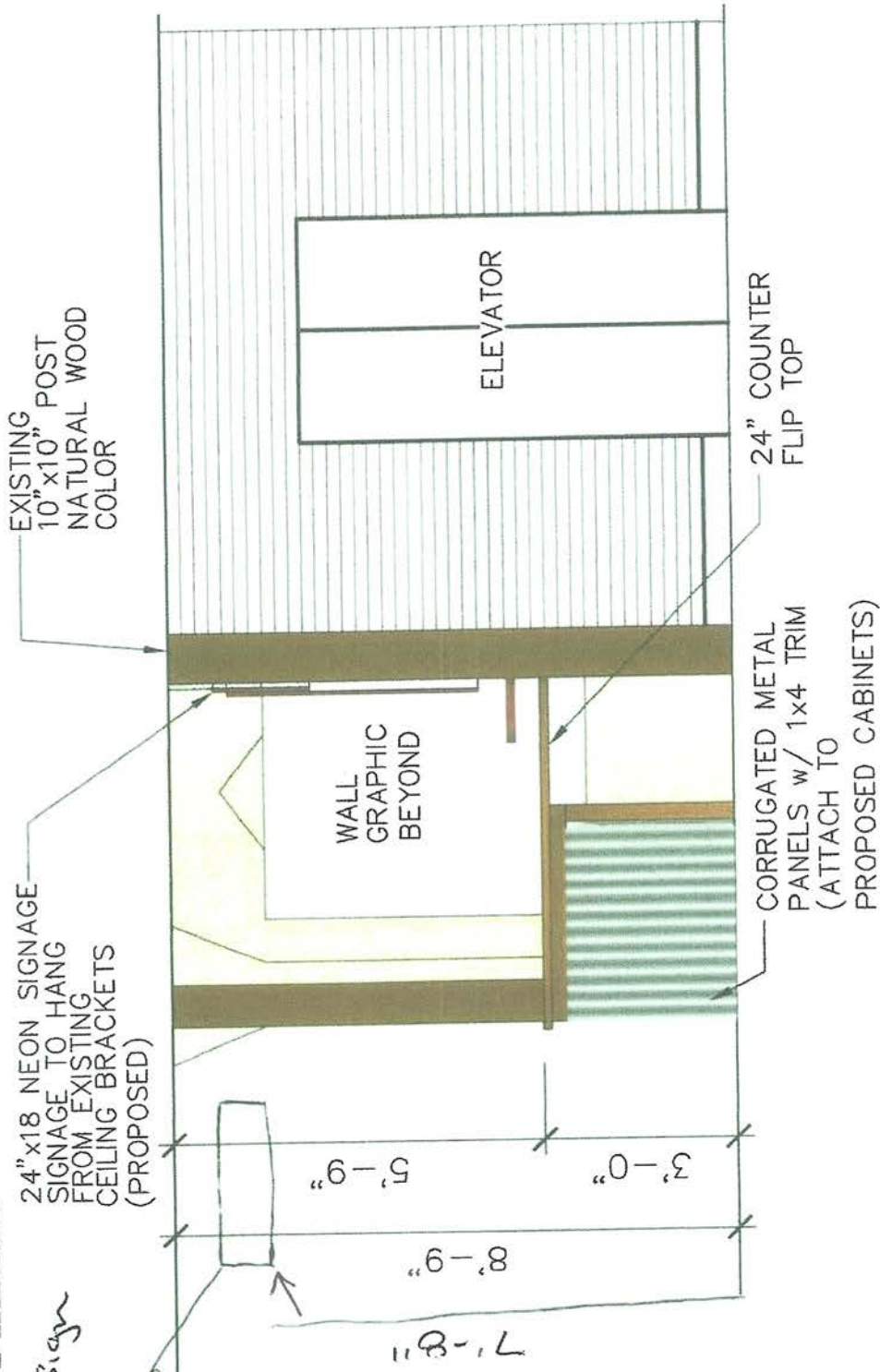
ELEVATION A-A
 3/8" = 1'-0"

(3) Construction

(4) Finishes

Proposed Hot Dog Sign

26" w x 14" h x 3" d



ELEVATION B-B

3/8" = 1'-0"

Menu

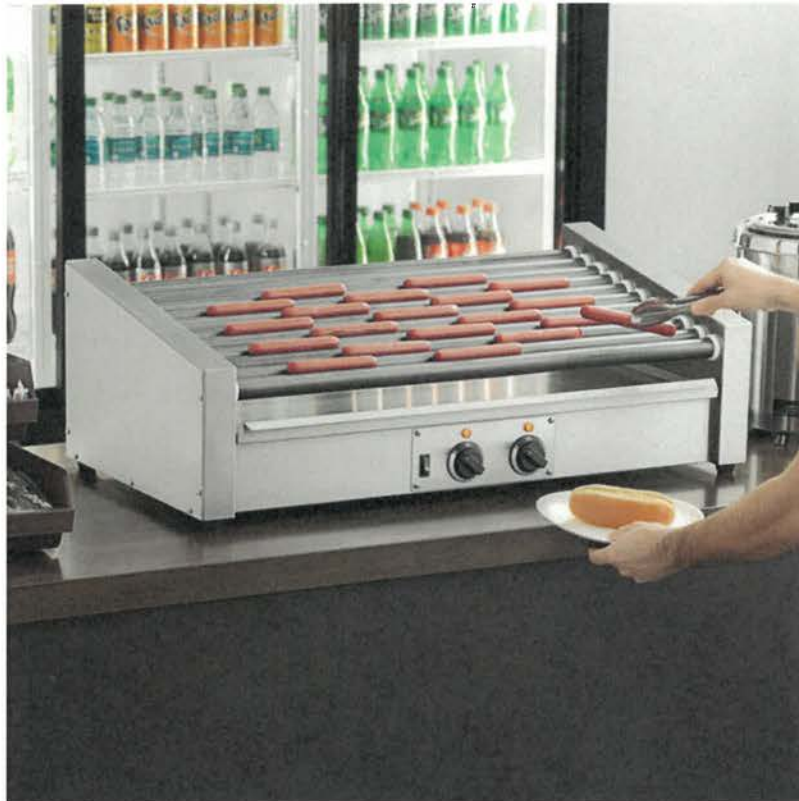
Search 420,000+ products

plus Unlock Savings with FREE Shipping! > Earn 3% Back* & Save on Plus >

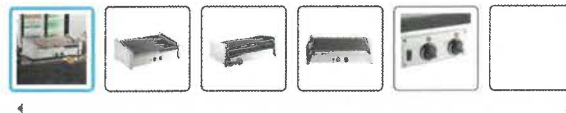
WebstaurantStore > Restaurant Equipment > Food Display and Merchandising > Hot Dog Equipment > Commercial Hot Dog Rollers > Avantco RG1850T 50 Slanted Hot Dog Roller Grill with 11 Non-Stick Rollers - 120V, 1460W

Avantco RG1850T 50 Slanted Hot Dog Roller Grill with 11 Non-Stick Rollers - 120V, 1460W

Leave a review Item #: 177RG1850SLT



Note: Faceplate/panel stamp design may vary



Free Shipping

Only **\$589.00/Each**

Limited time: 0% interest for 90 days [Prequalify >](#)

Credit Key

Ships free with

What We Offer

Protect Your Product Coverage starting at \$47.49

Add Protection

1




Add to Cart

Earn up to \$17.67 back (1,767 points) with a [Webstaurant Rewards Visa® Credit Card](#)

Wish List

Rapid Reorder

Compare to Other Products















	 ITEM #: 177RG1850SLT Avantco RG1850T 50 Slanted Hot Dog Roller Grill with 11 Non-Stick Rollers - 120V, 1460W plus Free Shipping	 ITEM #: 177RG1830NS Avantco RG1830NS 30 Hot Dog Roller Grill with 11 Non-Stick Rollers - 120V, 910W plus Free Shipping	 ITEM #: 177RG1850NS Avantco RG1850NS 50 Hot Dog Roller Grill with 11 Non-Stick Rollers - 120V, 1460W plus Free Shipping
PRICE	\$589.00/Each	\$299.99/Each	\$549.00/Each
VOLTAGE	120 Volts	120 Volts	120 Volts
WATTAGE	1,460 Watts	910 Watts	1,460 Watts
HOT DOG CAPACITY	50 Hot Dogs	30 Hot Dogs	50 Hot Dogs

*** Overall Dimensions:**

Width: 34 11/16 Inches
 Height: 11 Inches
 Hot Dog Capacity: 50 Hot Dogs

⚠ Attention CA Residents: Prop 65 Warning >

Other Products from this Line

 plus  Avantco RG1850NS 50 Hot Dog Roller Grill with 11 Non-Stick \$549.00/Each	 plus  Avantco RG1830NS 30 Hot Dog Roller Grill with 11 Non-Stick \$299.99/Each	 plus  Avantco RG1830 30 Hot Dog Roller Grill with 11 Rollers - 120V. \$259.99/Each	 plus  Avantco RG1824 24 Hot Dog Roller Grill with 9 Rollers - 120V. \$219.99/Each	 plus  Avantco RG1850SLT 50 Slanted Hot Dog Non-Stick Roller Grill \$979.00/Each	 plus  Avantco RG1830SLT 30 Slanted Hot Dog Roller Grill with 11 \$319.99/Each	 plus  Avantco RG1850 50 Hot Dog No-Roller Grill with \$899.00/Each
--	--	--	---	---	---	--

Need Parts & Accessories?

[View replacements or accessories for this item](#)

Resources and Downloads



Providing 1460W of heating power, this hot dog roller grill allows you to meet the needs of hungry customers who are looking for a quick, fresh snack on the go. As an added benefit, this roller can be used for other items like breakfast sausages and egg rolls, allowing you to further expand your hot food menu with a single piece of equipment!



ETL, US

This product has been certified by ETL, a division of the Intertek Group, to meet applicable electrical product safety standards required for use in the United States.



ETL Sanitation

This product has been certified by ETL, a division of the Intertek Group, to meet applicable sanitation standards required for use in the United States and Canada.



5-15P

This unit comes with a NEMA 5-15P plug.

Non-Stick, Easy-to-Clean Rollers

Featuring 11 non-stick rollers, this roller grill can hold up to 50 sizzling hot dogs at a time! They continually rotate to make sure that your foods are evenly cooked from all sides. The non-stick coating improves the durability of the rollers and also makes it that much easier to clean your roller grill! Non-stick seals prevent grease from entering the base and coming into contact with the motor and drive chain. In addition, the slanted rollers provide increased visibility, allowing you to showcase your expanded hot food menu.



Heavy-Duty Motor

The high-torque motor in this unit is durable and ensures the unit provides reliable performance. The motor is long-lasting, as its build reduces the amount of maintenance necessary, saving you time and money.

Menu

WebstaurantStore

Search 420,000+ products

Unlock Savings with FREE Shipping! Earn 3% Back & Save on Plus

WebstaurantStore > Restaurant Equipment > Food Display and Merchandising > Hot Dog Equipment > Hot Dog Roller Grill Bun Boxes and Bun Warmers > Avantco BW48M Stainless Steel 48 Hot Dog Bun Moist Heat Bun Warmer Kit - 120V, 600W

Avantco BW48M Stainless Steel 48 Hot Dog Bun Moist Heat Bun Warmer Kit - 120V, 600W

Leave a review Item #: 177BW48M



Free Shipping

Only \$384.49/Each

Ships free with plus

1

Add to Cart

Earn up to \$11.53 back with a Webstaurant Rewards Visa Credit Card

Wish List

Rapid Reorder



Quick Shipping

Usually ships in 1 business day

Product Overview

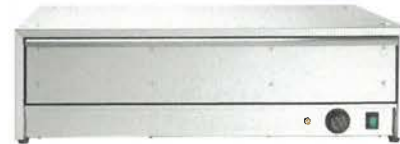
Provides moist heat to keep up to 48 buns fresh

**5-15P**

This unit comes with a NEMA 5-15P plug.

**ETL Sanitation**

This product has been certified by ETL, a division of the Intertek Group, to meet applicable sanitation standards required for use in the United States and Canada.

**Durable Construction**

Constructed entirely of durable stainless steel, this bun warmer gives a sleek, professional look that seamlessly blends into any eatery. Plus, with a sliding drawer, you can easily access the hot dog buns.

Space-Saver

Plus, it has feet indentations on top and is the perfect size, so you can even put your Avantco RG1850 roller grill on top of the warmer for even more space saving and quicker service for your customers!

Removable Drawer Quickly Pre-Heats

This bun warmer preheats in about 15-30 minutes, so you can start serving your customers in no time! It comes with a convenient drawer that is removable and dishwasher safe, so you can always keep a clean unit when serving to guests every day. This unit requires a 120V electrical connection for operation.

**Compare to Other Products**



ITEM #: 177BW48M

Avantco BW48M Stainless Steel 48 Hot Dog Bun Moist Heat Bun Warmer Kit - 120V, 600W

plus Free Shipping



ITEM #: 177BW48

Avantco BW48 Stainless Steel 48 Hot Dog Bun Warmer - 120V, 600W

plus Free Shipping

PRICE	\$384.49 /Each	\$364.49 /Each
WIDTH	35 Inches	35 Inches
DEPTH	21 Inches	21 Inches
HEIGHT	10 1/2 Inches	10 1/2 Inches
BUN CAPACITY	48 Buns	48 Buns
DOOR TYPE	Sliding	Sliding

Dimensions

Overall Dimensions:

Width:	35 Inches
Depth:	21 Inches
Height:	10 1/2 Inches

⚠ Attention CA Residents: Prop 65 Warning >

Resources and Downloads



Specsheet



Manual



Instructions

Menu

Search 420,000+ products

plus Unlock Savings with FREE Shipping! > **plus** Earn 3% Back & Save on Plus >

WebstaurantStore > Restaurant Equipment > Commercial Ovens > Countertop Convection Ovens > 1/2 Size Countertop Convection Ovens > Avantco CO-16 Half Size Countertop Convection Oven, 1.5 Cu. Ft. - 120V, 1600W

Looking for an upgrade?

Dismiss



Better **plus** Free Shipping

Cooking Performance Group COH-T3-A Electric Thermostatic Countertop 3 Tray Half Size Convection Oven with Steam Injection - 120V, 1650W

\$899.00/Each

Combines great value with dependable performance

View Product

Avantco CO-16 Half Size Countertop Convection Oven, 1.5 Cu. Ft. - 120V, 1600W

★★★★★ [Read 176 reviews](#) Item #: 177CO16



Free Shipping

Only

\$329.99/Each

Ships free with

What We Offer



Protect Your Product
Coverage starting at \$26.49

Add Protection

1

WATCH MORE VIDEOS



Avantco Countertop Convection Oven

An Avantco countertop convection oven is a great way to save space in your kitchen while offering a convection oven's fast, even cooking. Watch this video to learn more!

[More Video Resources >](#)

Transcript Embed

Looking for a way to make the most out of your limited kitchen footprint? Avantco countertop convection ovens offer a convenient and affordable way to do just that! Avantco offers quarter, half, and full size countertop convection ovens to suit any space. The CO14 quarter size oven can hold (3) 1/4 size sheet pans and is great for quickly whipping up 12" pizzas. The half size unit comes in three different options to fit your needs. The CO16 has a 1.5 cu. ft. cavity, while the CO28 has a 2.3 cu. ft. cavity and more power. The CO32 oven is identical to the CO28, but has an added steam injection feature. All of these models accommodate up to (4) 1/2 size sheet pans, offering a ton of cooking versatility for creating signature baked goods, sandwiches, and more! For the most versatility and the highest output, the CO46 full size unit is 208 / 240V and powered by 3500 - 4600W! The CO46 is capable of holding 4 full size sheet pans, this model gives you the output you'd expect from a standard oven in a more convenient countertop footprint. This oven is equipped with two fans which allow for even heat distribution for large batches. Plus, the full size oven is complete with steam functionality, allowing you to retain the vibrant colors and natural moisture of your foods! All Avantco countertop convection ovens feature a cool-touch, dual

Compare to Other Products



ITEM # 177CO16

Avantco CO-16 Half Size Countertop Convection Oven, 1.5 Cu. Ft. - 120V, 1600W

plus Free Shipping



ITEM # 177COE3H

Galaxy COE3H Half Size Countertop Convection Oven - 120V

plus Free Shipping

PRICE	\$359.99/Each	\$319.99/Each
VOLTAGE	120 Volts	120 Volts
WATTAGE	1.6 Kilowatts	1.6 Kilowatts
CAPACITY	1.5 cu. ft.	1.5 cu. ft.
SIZE	1/2 Size	1/2 Size
TEMPERATURE RANGE	150 - 500 Degrees F	150 - 500 Degrees F

* Overall Dimensions:

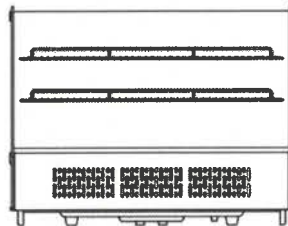
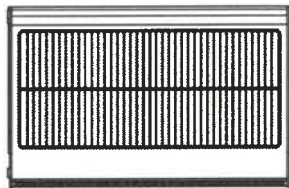
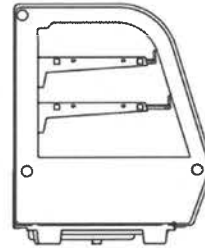
Width: 23 Inches
 Depth: 22 1/2 Inches
 Height: 16 1/2 Inches
 Capacity: 1.5 cu. ft.

Interior Dimensions:

Interior Width: 18 1/2 Inches
 Interior Depth: 14 1/2 Inches
 Interior Height: 9 3/4 Inches



- Brilliant internal LED illumination on top
- Digital temperature controller and display
- 4 sides double tempered glass
- Front curved glass
- Sliding doors at back
- Maintenance free condenser
- Ventilated cooling system
- Automatic defrost



Countertop Display

Model	Temperature	Shelves	Dimension (FxDxH) inches	Capacity (cu. ft.) Liters	NW kg lb	GW kg lb	WPI	Voltage
CW-120R	0-12°C 32-53.6°F	2	23x18.6x22.5 702x568x686 *	4.2 120	57 125.6	80 152.2	2.7	115V/60Hz 1phase
CW-150R	0-12°C 32-53.6°F	2	26.9x18.6x22.5 683x568x686	5.7 160	66 145.5	70 154.3	3	115V/60Hz 1phase
CW-200R	0-12°C 32-53.6°F	2	40x18.6x22.5 1220x568x686	7.1 200	92 202.8	96 211.6	3.8	115V/60Hz 1phase

* Dimensions
W x D x H
23" x 18.6" x 22.5"



Hot Dogs

\$249.99

Brand: jaNeonCo
 Product Code: JA1426-1046
 Availability: In Stock

Qty: 1

ADD TO CART

REMOVE THIS PRODUCT

Share on Facebook, Twitter, YouTube

Description

- Measures: 26 Long" x 14" High x 3" Wide
- Mounted on Grid Rack (Skeleton Frame)
- Standard 110 volt neon transformer & 6 foot power cord
- Hanging hardware & chain included
- Indoor use only
- 90 Day Warranty

Dimensions
 26" L x 14" H x 3" W
 Skeleton Frame
 Colors - Red, Yellow, White Neon



#1 Neon Sign “Hot Dogs”

Dimensions: 20"L x 32"W x 3"D mounted on a Black Backing.

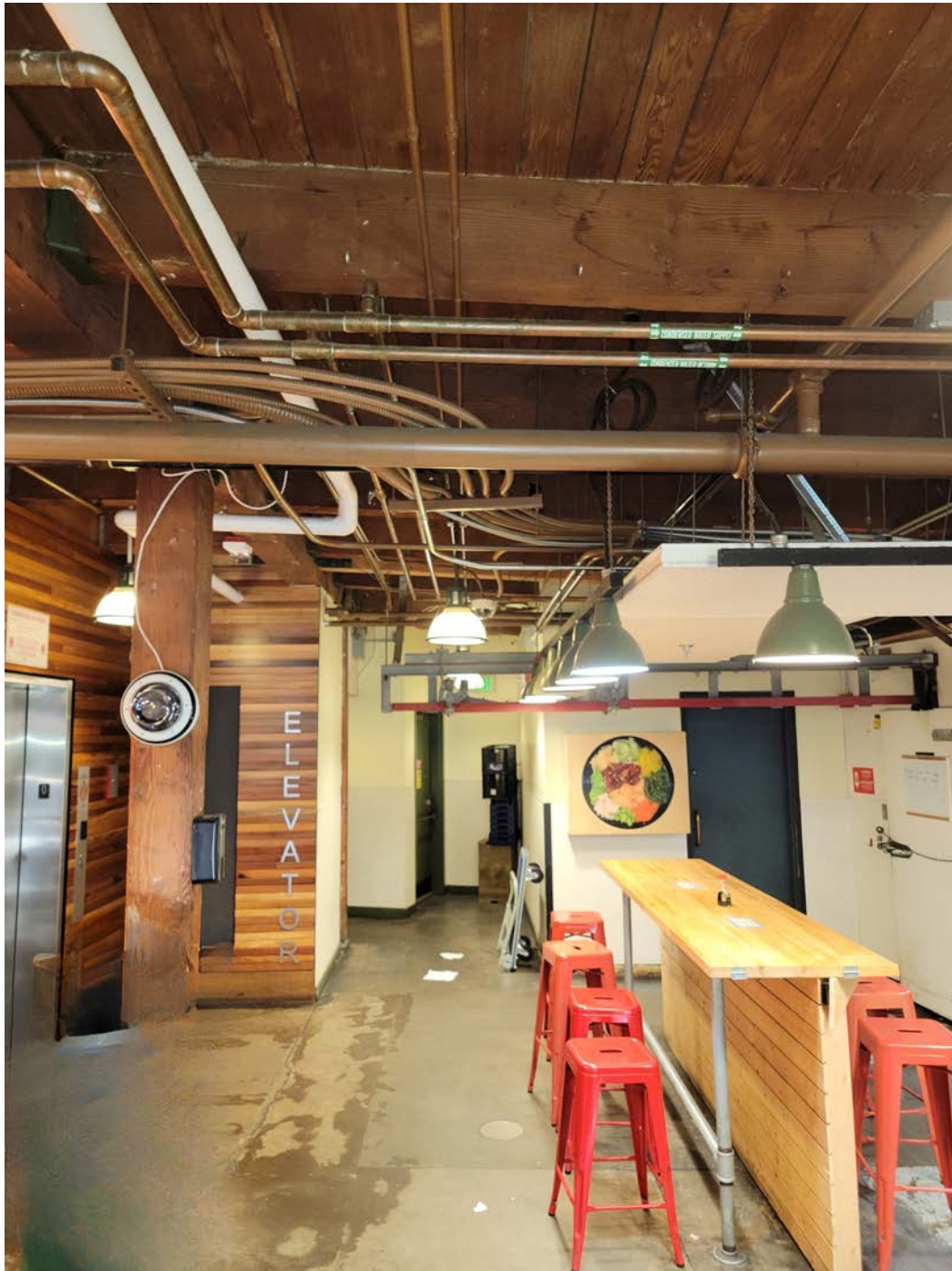
This sign to hang from beam above using currently installed eyehooks. There was a previous neon installed there (Britt's Pickles)

Standard 110v plug in to outlet above.

The cord will be hidden above the sign and secured to beam using cable staples, per PDA maintenance approval (see attached photo).

Handmade glass tube neon. Consistent with our current “Bonnie B's neon”

Height from floor to bottom of sign 7'8"



View of location for neon sign. Eyehooks in view, also electrical box on R of picture



Eyehooks installed in beam



Eyehooks and electrical outlet



Cable staple for securing cord to beam