

## **Summary:**

I am submitting a MHC application in order to update and complete the renovations at Uli's Sausage (1511 Pike Place). Specifically, I am looking to create a partition in the kitchen, that will help separate our cook and prep spaces, as well as providing a better aesthetic from the customers viewpoint. This partition wall will also serve as one of the main focal points for the kitchen, as all of the menus and signs will integrate with this wall.

On top of this, I am building large built in cabinets for the dining room that will store ingredients as well as showcasing the various European pre packaged foods/beverages I will be selling. I'm hoping this updating dining room area, will make it more inviting for customers to come and sit down, relax and enjoy the fresh food. Opening up the space and freshening up the paint, will make a big difference to the feel of the space while retaining all the charm this place has cultivated over the last 20 years.

Scope of work: partition wall with 5ft walkthrough, and 6 ft eye level openings, install of painted brick, install of walnut shelves and hanging of A3 sized sign on the partition wall, install of built-in cabinets, track lighting along with an energy efficient combo cooler and display case. Estimated cost - \$6,500.

## **Materials Used:**

Steel studs to create the partition between the kitchen and the 'front of house'. Studs covered in fire retardant drywall, to exceed current fire code requirements and will include fire retardant insulation for echo and noise control.

## **Finishes:**

Real reclaimed clay fired brick - identical to the brick in Post Alley/gumwall. This will be paint washed (Paint Code: GLN9011N - ADJ 61YY 89/135 Soft) to add some texture to the front of house, which will be downlit with spotlights (2700k) to highlight the texture wall. Menus (printed canvas) hung from the brick will also be lit with spotlights (2700k). These spotlights will be surface mounted to the ceiling to blend in with the current flat black ceiling.

The brick will be salvaged from a reclaimers yard in Woodinville, pictured below. Which is as close in size and colour to the brick used around the market. This will only be used for the feature wall as seen from front of the space, which will be less than 110 sq ft in total.

The shelf in the partition wall, will be an exposed 9 inch tall view through window, that will allow people to see through and more importantly - will allow a pass through window for food

from the kitchen. The kitchen will still be visible for customers, specifically through the dining room walk way - which still gives customers a front row seat into their food being cooked.

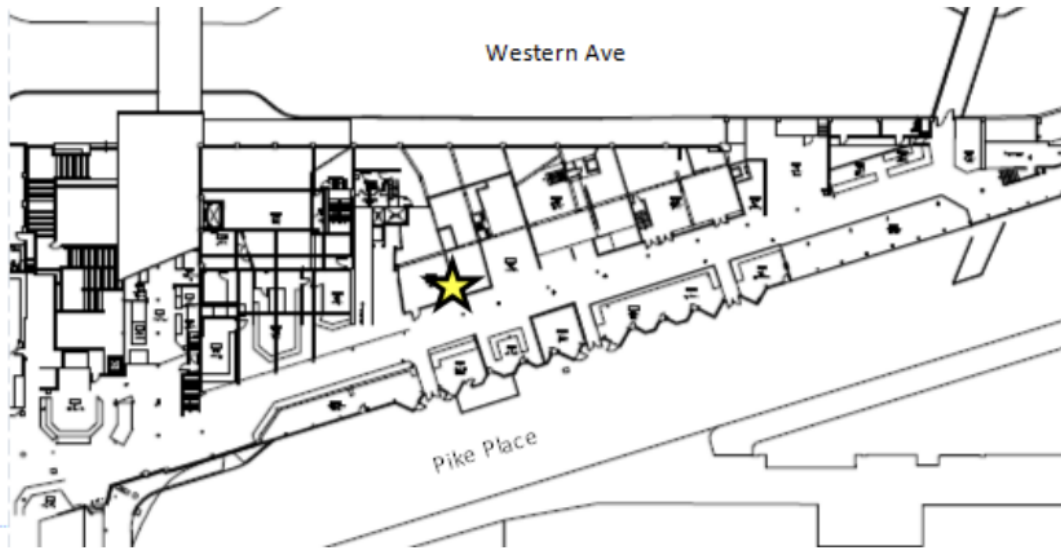
As viewed from the front cooler, there will be a 5ft opening from the partition wall to the main wall, that also looks directly into the main grill/cooking area - which will allow customers a view from the front.

Frontside (customer side) will be brick, washed with the same paint as before (Paint Code: GLN9011N - ADJ 61YY 89/135 Soft).

Backside (kitchen side) will be fire rated drywall painted the same paint as before (Paint Code: GLN9011N - ADJ 61YY 89/135 Soft).

Front cooler is now replaced with a smaller more energy efficient display case, which will allow for better presentation of the pre packaged sausages and baked goods. While the bulk of the pre packaged sausages will be stored in a dedicated fridge in the kitchen.

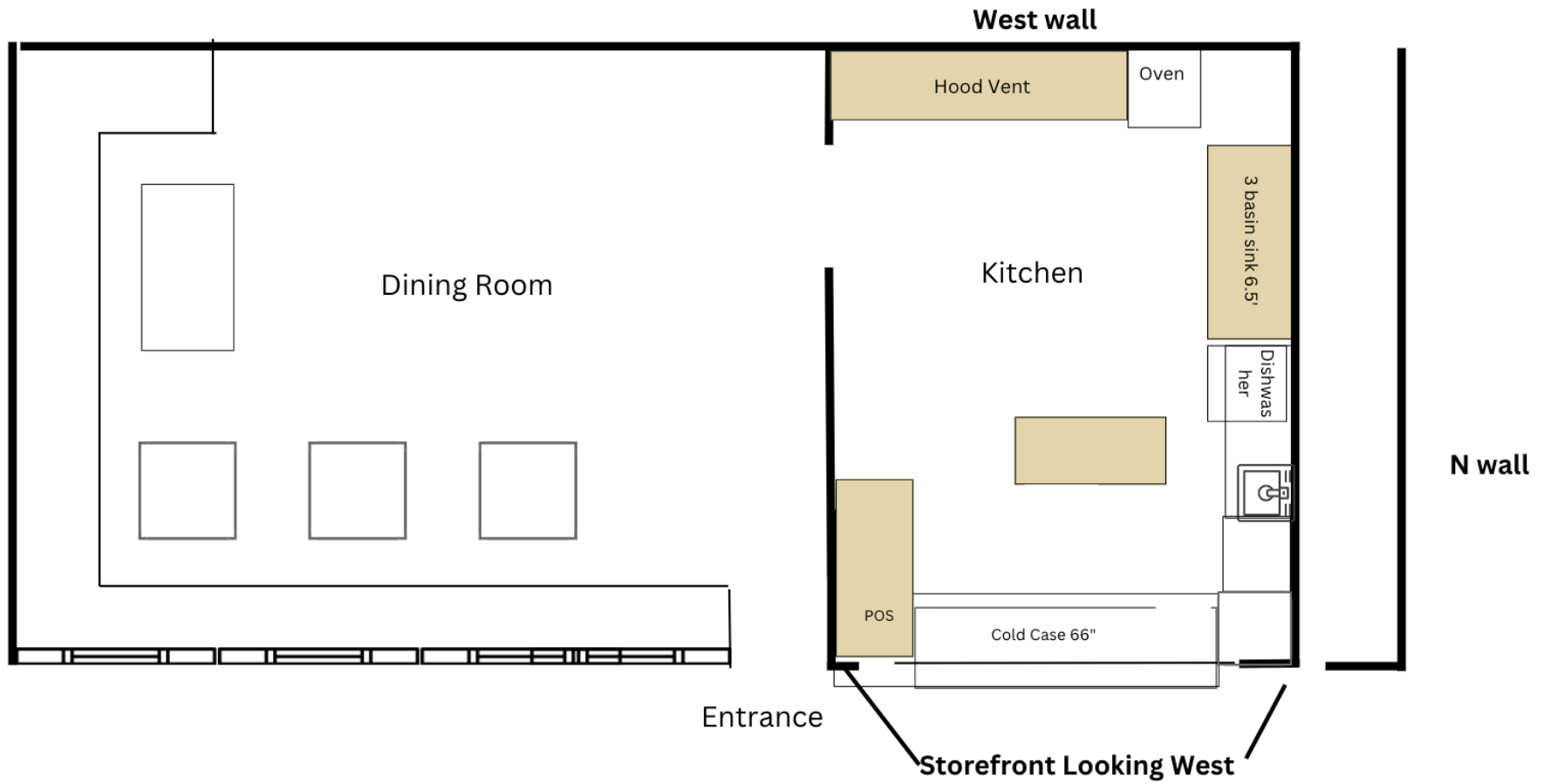
Siteplan



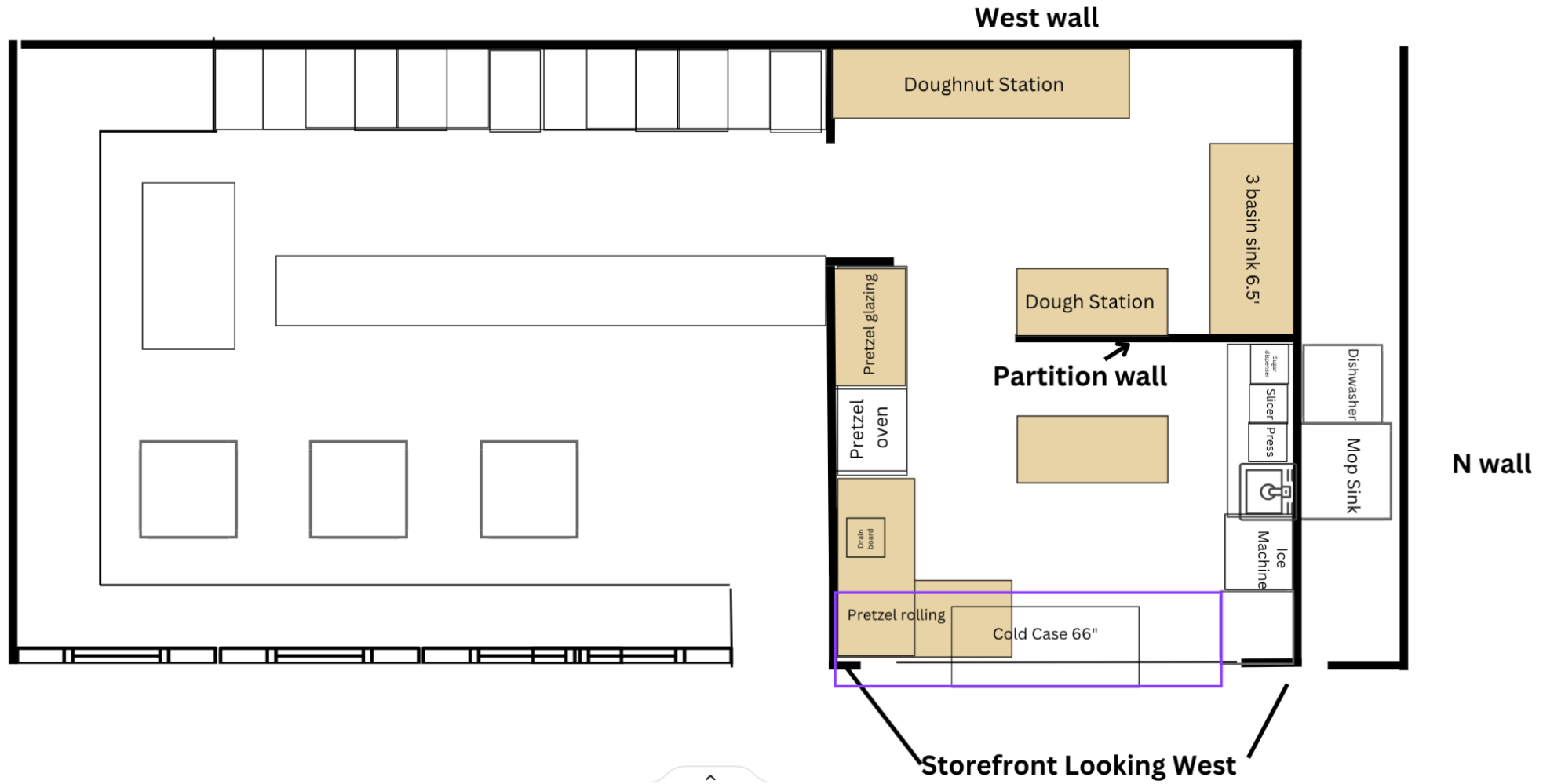
SPACE PLAN AND LOCATION



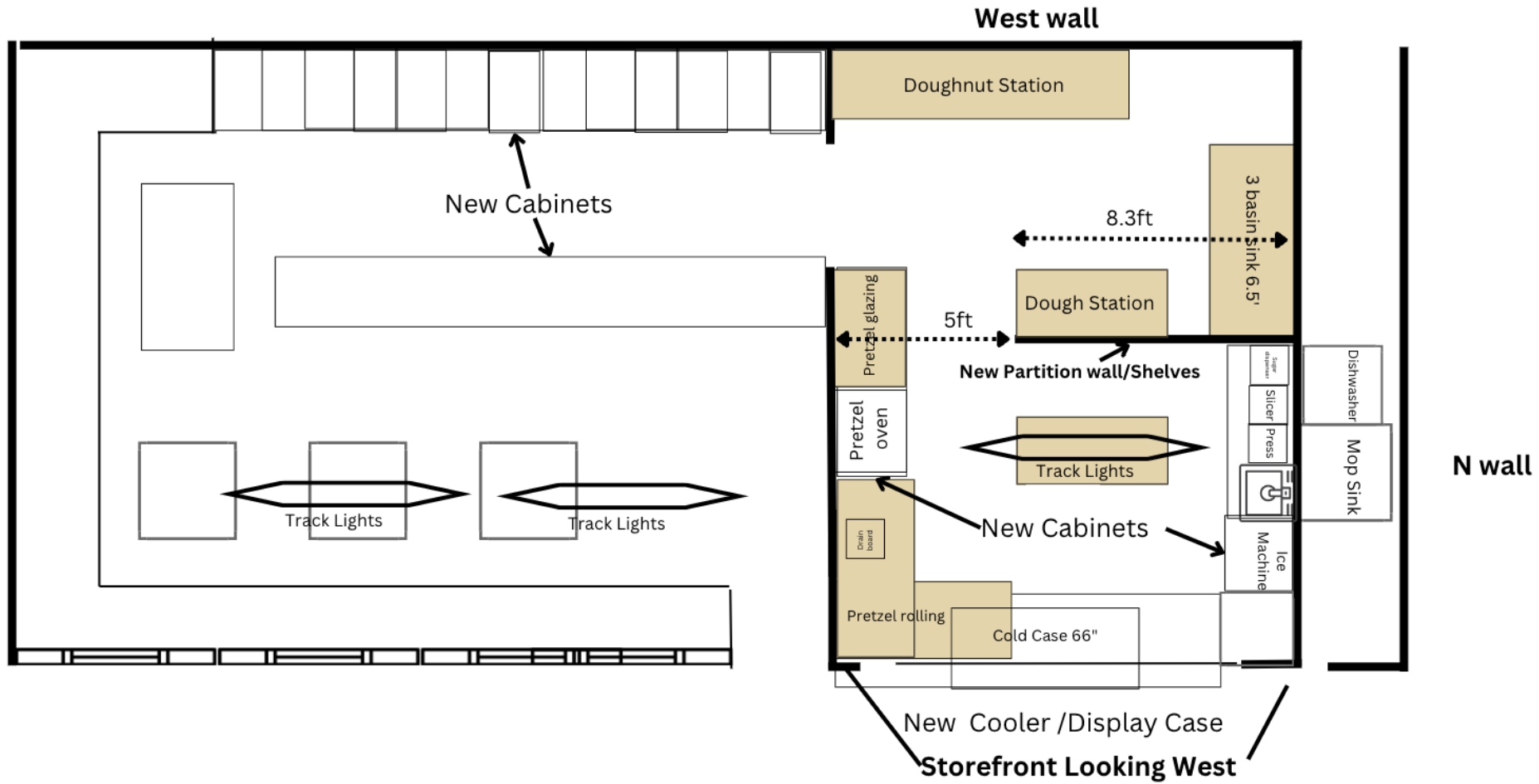
# Original Layout



# Labelled views



# Proposed Work





Brick Walls



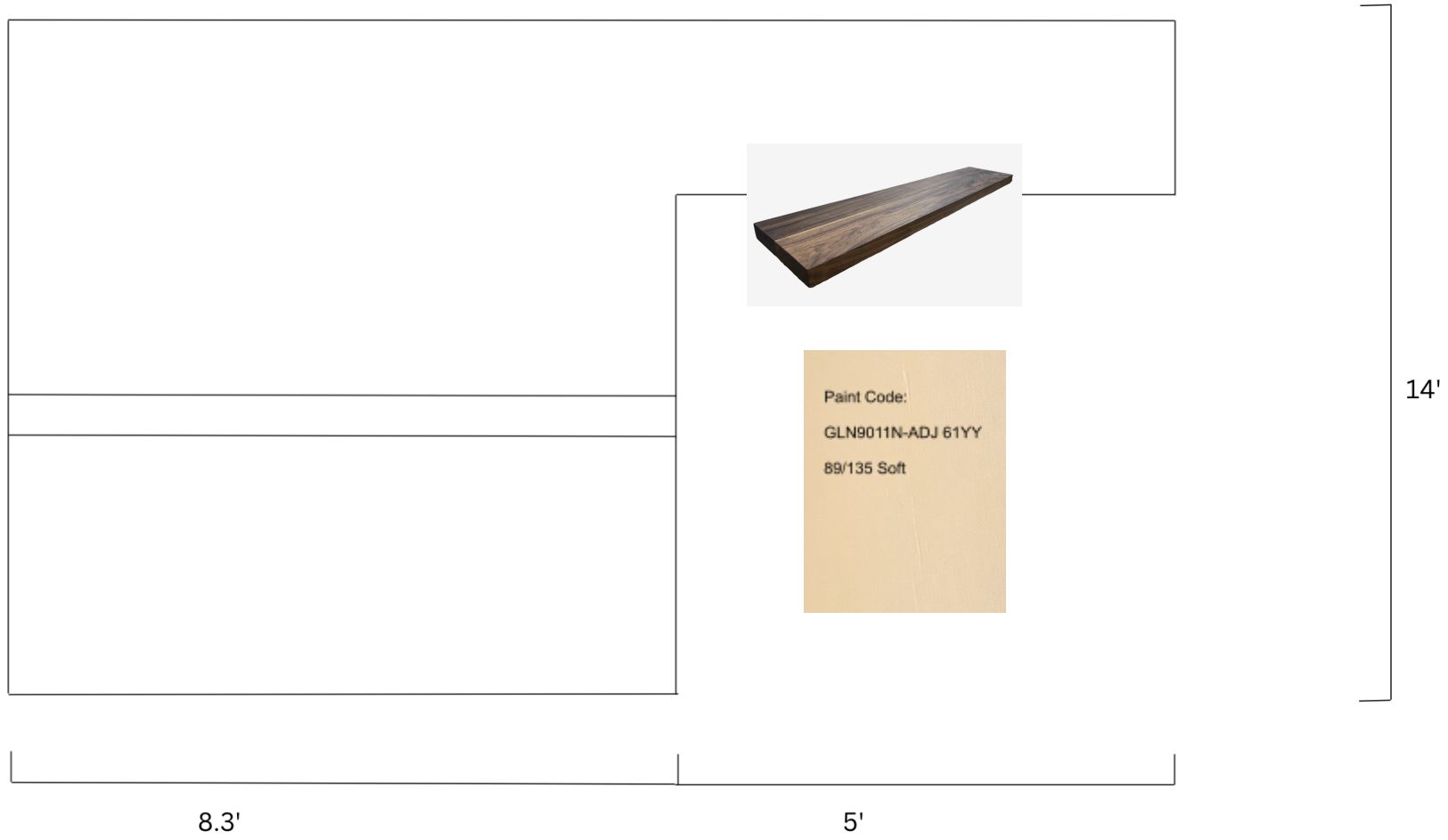


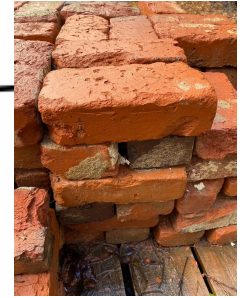
Floating Shelves (x2) for the Partition Wall.

Materials: Reclaimed 2 inch slab of Walnut (72 inches x 10 inches)



**Rear of Partition Wall**  
**Looking from the kitchen east to the front of the store**





### Dining Room Cabinets

11ft tall built in cabinets, that will be used to showcase prepackaged food for sale as well as some of our specialised beer offerings. The top shelf once finished, will have a round arch (picture 2).

Cabinets will be painted the same color as the rest of the interior - (Paint Code: GLN9011N - ADJ 61YY 89/135 Soft)



Paint Code:  
GLN9011N-ADJ 61YY  
89/135 Soft



Paint Code:  
GLN9011N-ADJ 61YY  
89/135 Soft





Painting Walls

New Cabinets

New Combo cooler and Display Case



Track Lights

Painting Walls (GLN9011N) / Brick

New Cabinets

New Comb cooler and Display Case





Painting Walls (GLN9011N)

Partition Wall Location



Painting Walls and Trim  
(GLN9011N)

Track Lighting

## Track Lighting (2700k)



## Front Cooler

**Reveal®**

Combination Convertible Service Above Refrigerated Self-Service Case

**Structural Concepts™**

DELIVERING FRESH. ALWAYS.™

- |                      |                            |
|----------------------|----------------------------|
| • <b>NR3651RRSSV</b> | 35-3/4"L x 33"D x 50-3/4"H |
| • <b>NR4851RRSSV</b> | 47-3/4"L x 33"D x 50-3/4"H |
| • <b>NR6051RRSSV</b> | 59-3/4"L x 33"D x 50-3/4"H |
| • <b>NR7251RRSSV</b> | 71-3/4"L x 33"D x 50-3/4"H |

### Included

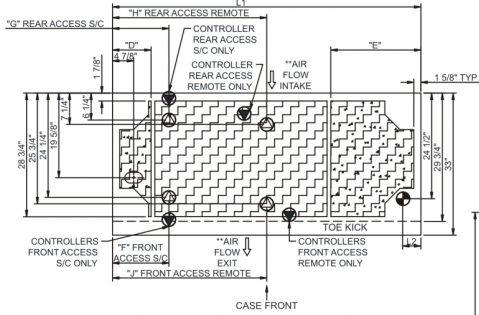
- NOTE: Glass warranty only applicable to first point of delivery
- Breeze-E (Type-II) self-contained refrigeration
- Blue Fin coated coil
- Clear glass shelf, lighted (LED 3500K) in upper display
- Condensate pan (self-contained refig. only)
- Convertible baffle in upper display
- Fixed vertical glass
- Integrated average product temperature of 40°F or less
- LED top light
- One piece formed ABS plastic tub
- One year parts & labor; 5 year compressor warranty



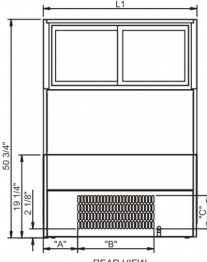
**NR4851RRSSV**

<b>Intended Environment:</b> Type II - Designed to operate in ambient conditions of 80°F and 55% relative humidity unless noted otherwise in system information below.		
<b>Zone</b>	<b>Intended Product To Be Displayed</b>	<b>Warmest Avg Prod Temp ° F</b>
1	Packaged / unpackaged refrigerated products	40

**PLAN VIEW**



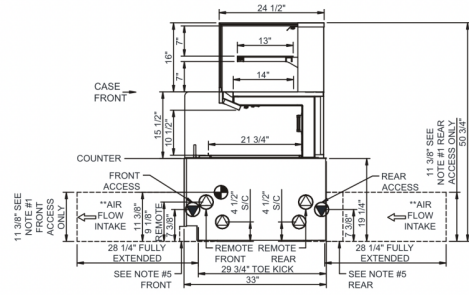
	"D"	"E"	"F"	"G"	"H"	"J"
NR3651RRSSV	N/A	N/A	7 1/8"	7 1/8"	17 7/8"	17 7/8"
NR4851RRSSV	9"	9"	13 1/8"	7 1/8"	23 7/8"	23 7/8"
NR6051RRSSV	9"	9"	13 1/8"	13 1/8"	29 7/8"	29 7/8"
NR7251RRSSV	9"	21"	13 1/8"	13 1/8"	35 7/8"	35 7/8"



	"A"	"B"	"C"
NR3651RRSSV	8"	17 3/4"	7 3/4"
NR4851RRSSV	14"	17 3/4"	7 3/4"
NR6051RRSSV	13"	30 1/2"	7 3/4"
NR7251RRSSV	25"	30 1/2"	7 3/4"

NOTE: ALL DIMENSIONS APPROXIMATE

**SIDE VIEW**



- NOTES:
- 11 3/8" TALL, FULL WIDTH OF CASE OPENING IN CABINET OR COUNTER IS REQUIRED TO PULL OUT REFRIGERATION SYSTEM.
  - BACK OF COUNTER / CABINET MUST BE VENTED PROPERLY FOR ADEQUATE AIRFLOW TO CONDENSER.
  - \*\* REPRESENTS REAR PULLOUT REFRIGERATION. AIR FLOW INTAKE AND EXIT DETAILS ARE REVERSED WITH FRONT PULLOUT REFRIGERATION OPTION.
  - SELF-CONTAINED ACCESS ONLY BY PULLING OUT CONDENSER UNIT.
  - 4" OPEN AREA CLEARANCE REQUIRED FOR AIR FLOW FRONT AND REAR OF CASE.

Siteplan