



CAFE DAVINA

POP-UP DESIGN PROPOSAL

COFFEE DOWN UNDER
PIKE PLACE MARKET

OUR PLAN

In order to activate the space as quickly as possible, we are proposing very limited cosmetic changes, limited essentially to fresh paint. We will create a pop-up style Café Space in order to offer a loving crafted summer drink menu, resale beans from local roasters, Cafe Davina merch and apparel, Coffee tastings and How-To home coffee classes as well as home coffee brewing accessories.

Cafe Davina isn't just selling coffee; we are selling a unique coffee experience that attempts to honor a lifetime investment in, and love of, Seattle coffee culture. By leveraging nearly 30 years of industry expertise and proprietary, shelf-stable ingredients, we offer a high-volume, low-waste model that is perfectly positioned to capture the international audience of the 2026 World Cup and bring thirsty and inquisitive visitors to the lower levels, that may have never seen the amazing businesses in the lower levels.

PAINT DETAILS

⋮

BENJAMIN MOORE SWISS COFFEE & BENJAMIN MOORE SALAMANDER

BENJAMIN MOORE OC-45 LEANS TOWARDS **YELLOW** HUES, WHILE BENJAMIN MOORE 2050-10 IS **GREEN**. BENJAMIN MOORE OC-45 AND BENJAMIN MOORE 2050-10 DIFFER SIGNIFICANTLY IN SATURATION. BENJAMIN MOORE OC-45 IS MORE SATURATED. THEY DIFFER IN THEIR VALUES, BENJAMIN MOORE OC-45 RADIATING A LIGHTER ESSENCE COMPARED TO 2050-10.

First color

OC-45 Swiss Coffee

Second color

2050-10 Salamander

Benjamin Moore
Swiss Coffee
OC-45

Benjamin Moore
Salamander
2050-10



Hue

51

yellow

180

green

LIGHT WEIGHT DESIGN UPDATES

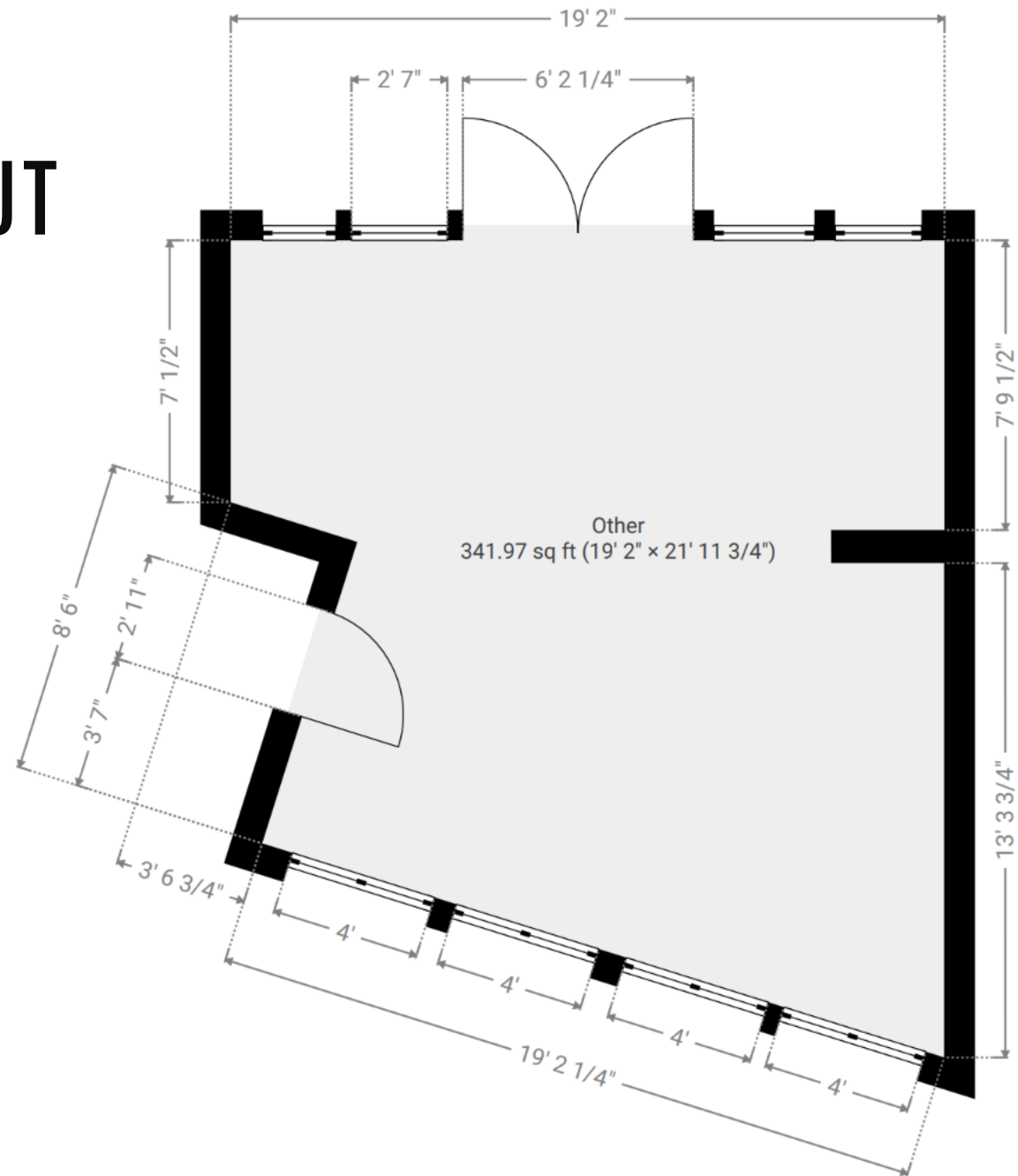
Benjamin Moore
Swiss Coffee
OC-45

Benjamin Moore
Salamander
2050-10

- Benjamin Moore Swiss Coffee (OC-45) will be used for ceiling, window and door trim, as well as the existing lower wall paneling, while Benjamin Moore Salamander (2050-10) will be used to cover all pegboard surfaces in the space.
- The pegboard from both sides of the entry doors will be removed, to improve visibility into the space.
- Existing carpeting will be deep cleaned. Clear PVC plastic floor pad will be placed on top of the carpet in the drink assembly area, out of site of the general public, for ease of cleaning and to satisfy King County health inspection requirements.



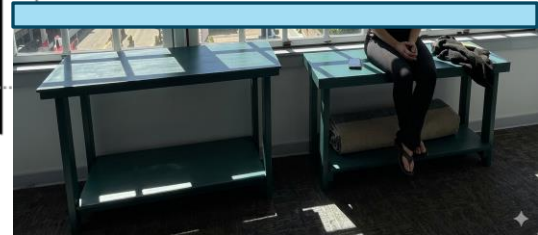
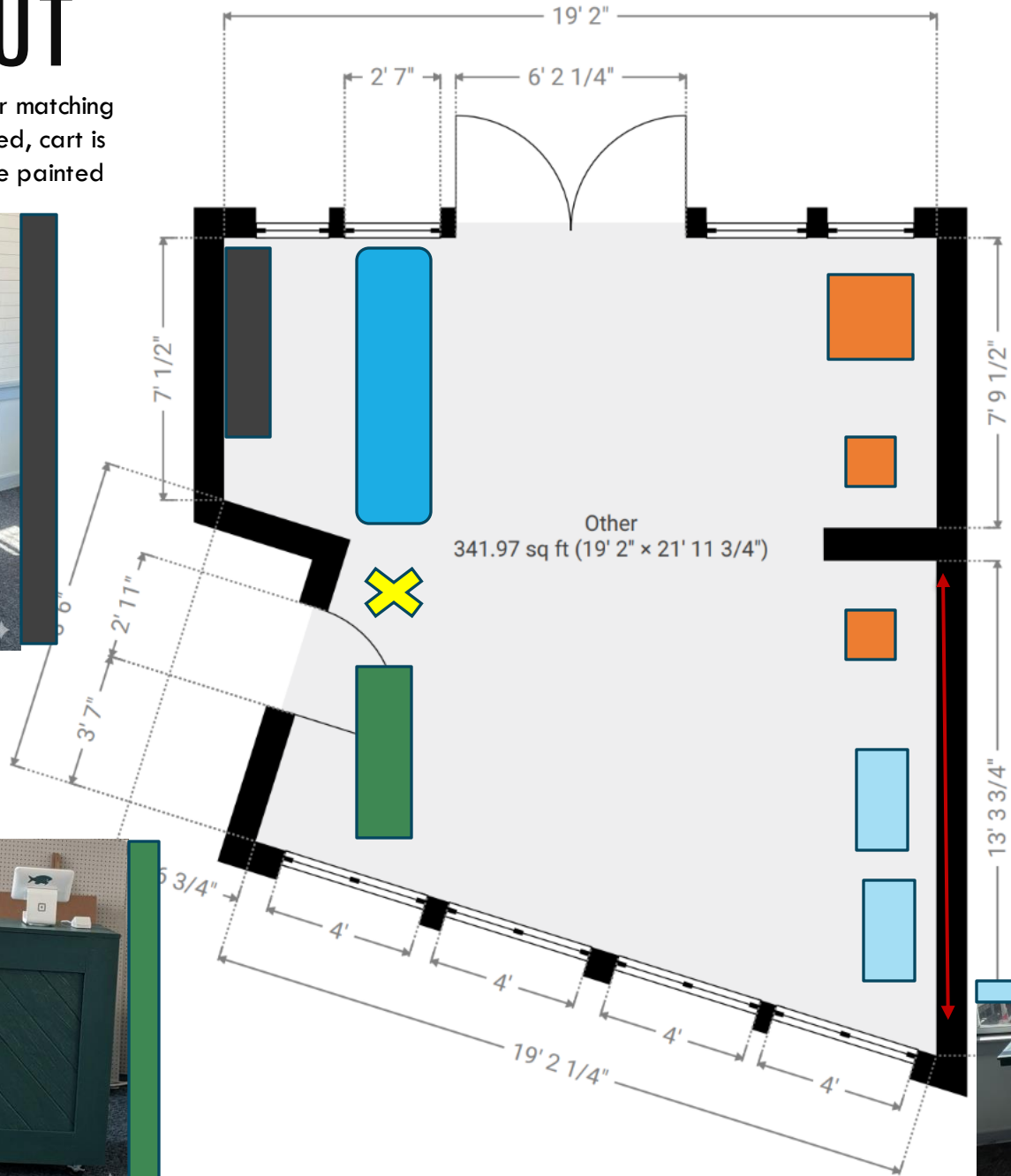
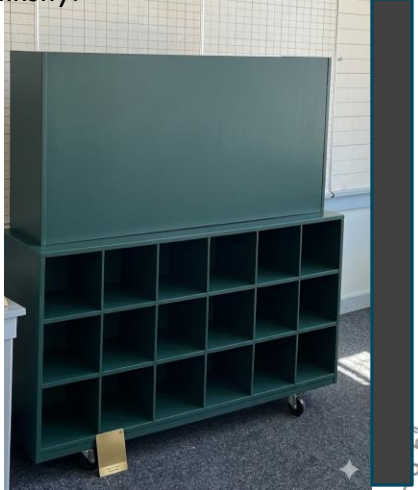
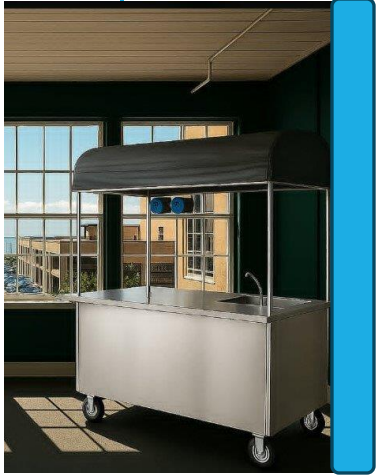
CURRENT LAYOUT



Measurements and placement of walls, windows and doors are approximate.

PROPOSED LAYOUT

Location of items within café space identified by color matching indicators beside pictures. Tables will remain unpainted, cart is polished metal, while shelves and storage units will be painted Salamander for color continuity.



STORE ENTRANCE

- New Sign above door, stating Café Davina, hand painted by local artist, Courtney Harris.
- Exterior & Interior Peg Board Removed from entry doors and windows.
- Paint updated to match planned inside color scheme, using Benjamin Moore Egg shell for doors and window frames, and Benjamin Moore Salamander for remaining peg board.



WEST WALL

- Paint will be updated as previously stated for all walls; Peg board will be painted Salamander, while window frames and lower wainscoting painted Eggshell.



SOUTH WALL

- Paint will be updated as previously stated for all walls; Peg board will be painted Salamander, while window frames and lower wainscoting painted Eggshell.
- Peg board right of center column will be a display of Café Davina Merch, & apparel, with two display tables against the wall, painted Salamander, to be used to display home coffee equipment and bag of locally roasted beans.



NORTH WALL

- Order counter will be placed in front of existing closet, painted salamander to match wall color scheme, as previously stated, painting the peg board walls salamander, and the lower wainscoting egg shell.
- Space directly behind front right window will be used for drink assembly and production, with coffee cart positioned perpendicular in front of wall, to utilize currently available outlet for coffee cart refrigeration.



STORE EXIT

- Peg Board Removed from both inside and outside entry doors and windows.
- Wall and trim painted to match previously stated color scheme, painting the peg board walls Salamander, while the lower wainscoting, window and door trim, Egg shell.
- Wood shelving currently in windows will be painted Egg shell



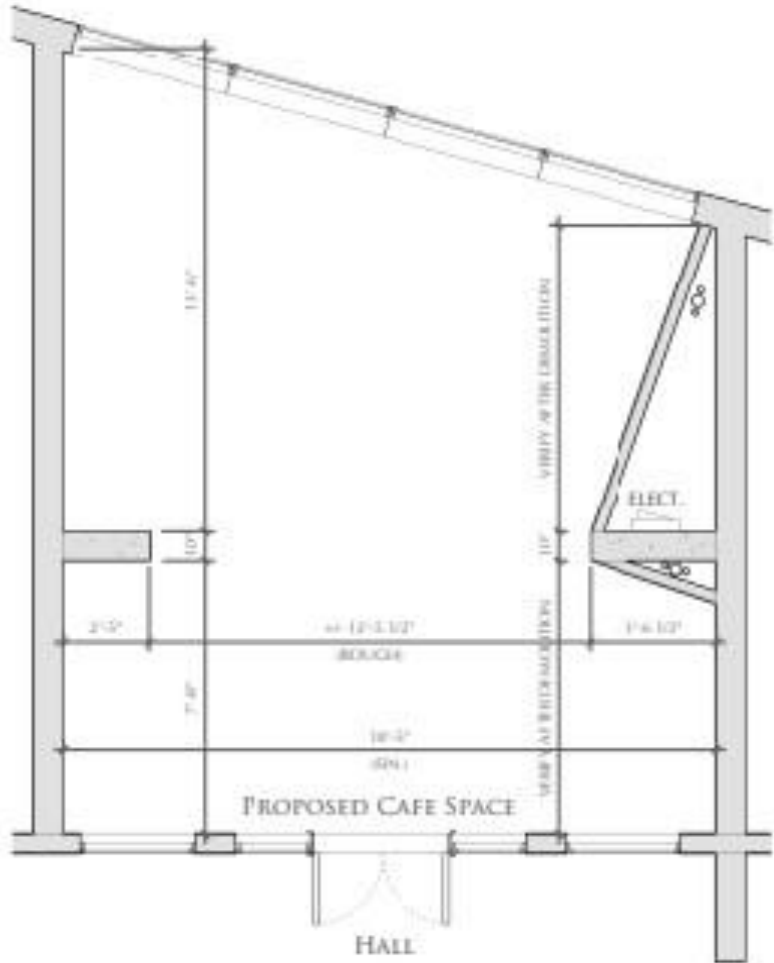
PROPOSED SIGNAGE:



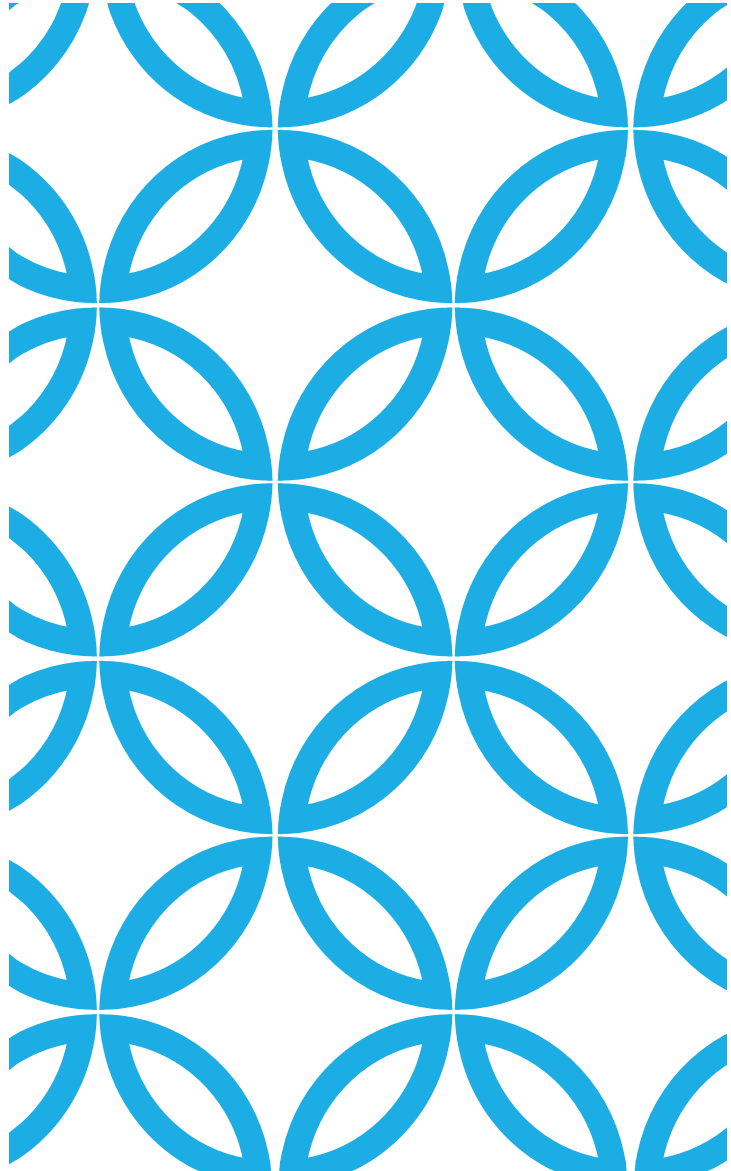
Temporary sign for Café Davina Pop Up. Hand Painted on coffee-stained wood, 4 feet in length x by 1.75 feet in height, to be hung centered above the entry door.

OUR FUTURE CAFÉ BUILDOUT
WILL BE ACCOMPLISHED WITH
GOLESH ARCHITECTURE AS
OUR PROJECT DESIGNER.

DESIGN SPECIFICATIONS FOR THE
FULL BUILDOUT WILL BE
PRESENTED IN SEPTEMBER 2026

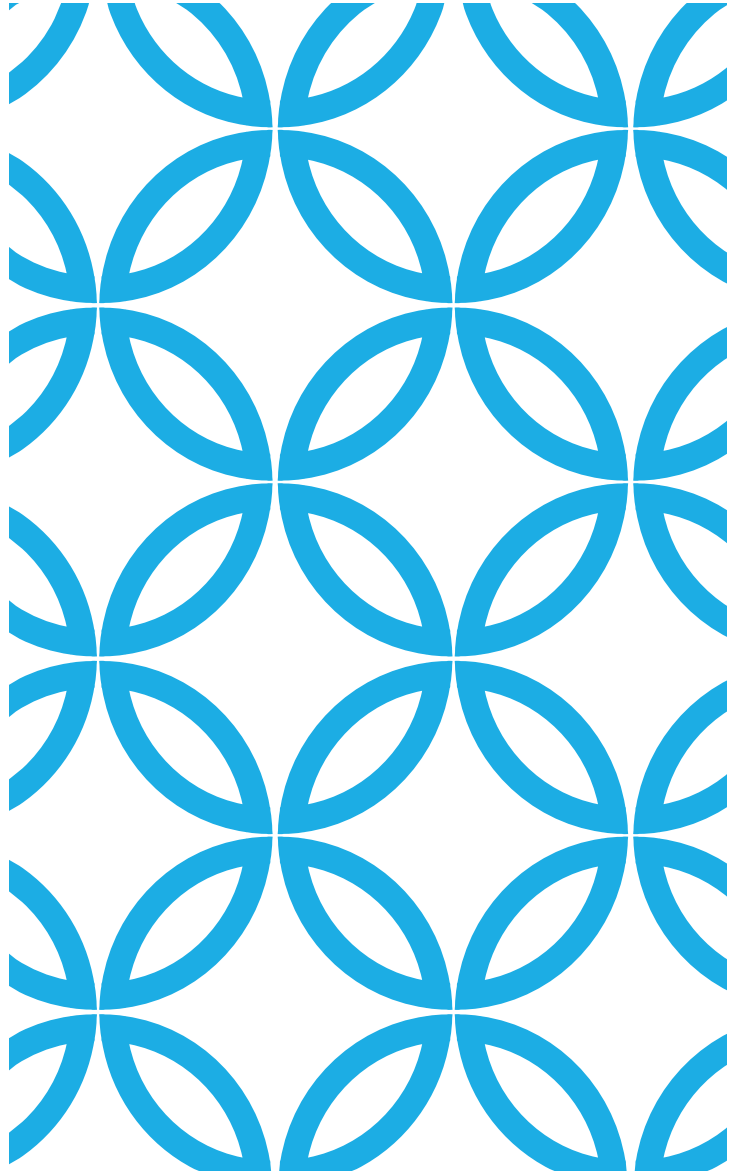


EXISTING FLOOR PLAN
SCALE: 1/4" = 1'-0"



FUTURE DESIGN DETAILS





SUMMER MENU

APPROXIMATION OF CHALK MENU

(TO BE DISPLAYED ON EASEL BETWEEN ORDER COUNTER AND COFFEE CART)



CAFÉ DAVINA SUMMER MENU

THE BOTANICAL NECTARS

Vibrant, refreshing, and 100% plant-based.

Alabaster Lime (Vegan) A creamy, dairy-free Brazilian-style limeade crafted with fresh organic lime juice, filtered water, and sweetened condensed coconut milk. Frothy, bright, and perfectly balanced. \$7.00

Crimson Zenith A brilliant, ruby-red refresher blending tart organic hibiscus, sweet pomegranate juice, and a delicate mist of rose water. \$7.00

Celestial Blue An electric indigo infusion featuring sweet Washington Bartlett pears, fresh garden mint, and butterfly pea flower. (*Ask your Alchemist for the "Magic Shift" with a squeeze of fresh lemon!*) \$7.00

A Note on Our Ingredients: *Cafe Davina proudly uses locally sourced milk and premium organic botanicals & fruits whenever possible. Plant-based milks are available upon request for any of the cloud beverages.*

THE HANDCRAFTED CLOUDS

Signature layered beverages, meticulously crafted and served over ice.

Whipped Gold An elevated take on a classic. A dalgona layered coffee, toffee-colored foam, finished with a single pinch of Maldon sea salt and customized to your sweetness preferences. \$8.50

Velvet Amethyst Deep, nutty sweetness meets the smooth intensity of dark-roasted coffee. A marbled gemstone of house-made organic ube velvet, crowned with a dark float of signature coffee ink. \$8.50

Thai Tea Cloud A high-contrast horizon of spiced amber and silken vanilla. 100% pure organic Thai tea solids steeped to perfection, resting beneath a weightless, pillowy cloud of vanilla vapor. \$8.00

The Obsidian Swirl (Caffeine-Free) A journey to the earth's core. Rich, house-made dark organic chocolate "smoke" swirled through creamy milk and topped with a bright white steam cloud. Perfect for kids and chocolate purists. \$8.00