

# New Iconic Market Sign





MHC Design Application





# Proposal

- Taking inspiration from the Market’s iconic clock and sign the PDA would like to install a new large format neon sign on the south side of the waterfront elevator shaft
- Project funded by grant from City of Seattle Office of Economic Development
- Complies with MHC Guidelines 3.6.1 and 3.6.2

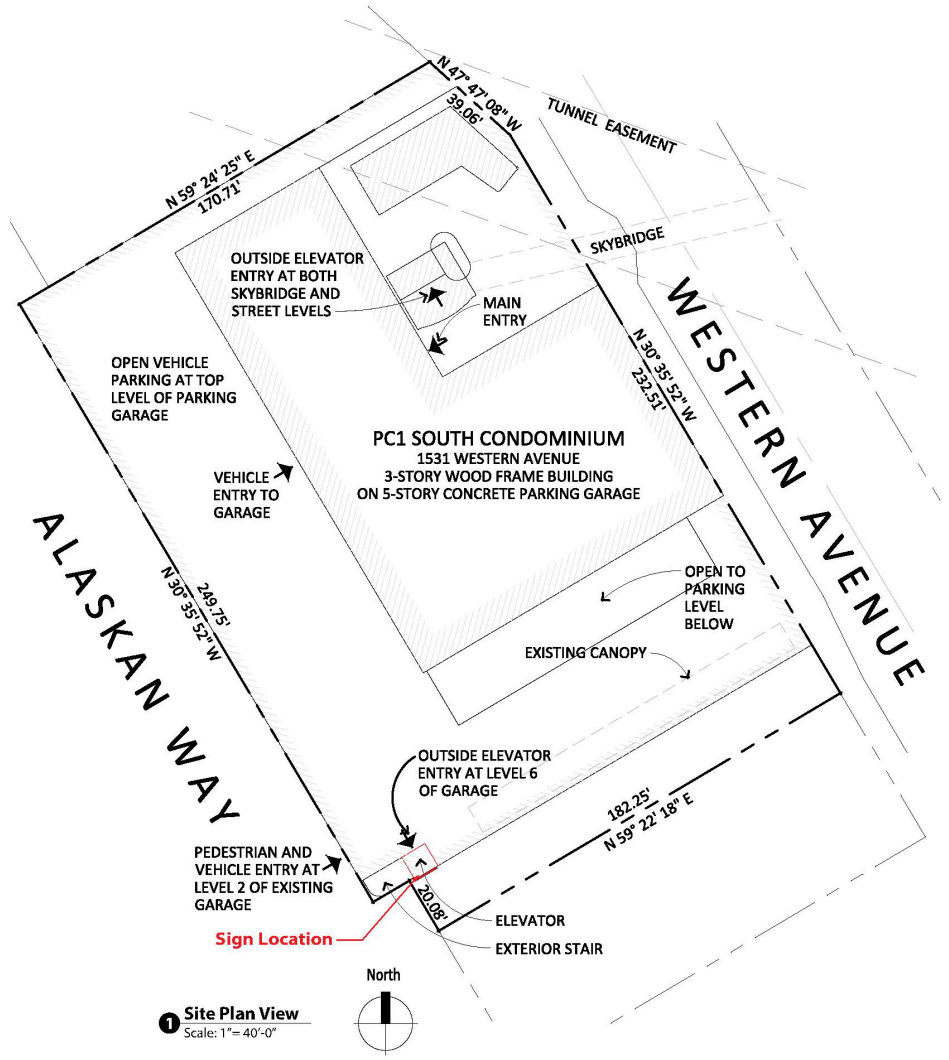
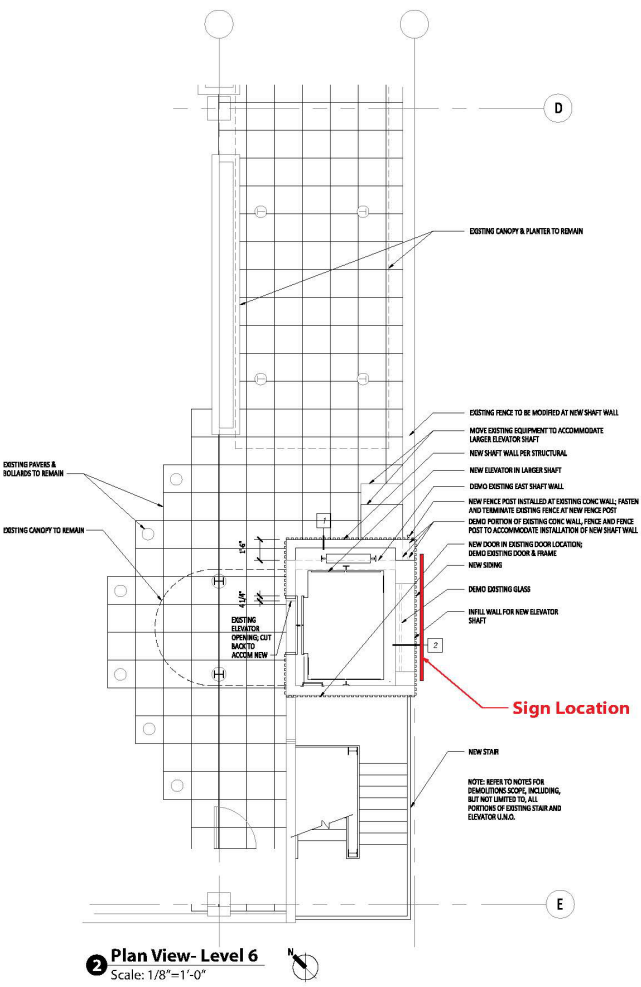
Colors	Gray 	Red 	Black 	White 
PMS	Cool Gray9 C	187 C	Black	White
Translucent Vinyl	N/A	N/A	N/A	N/A
Paint	N/A	N/A	Verify building color	MP 27386



# Site Plan



# Detailed Site Plan





# Existing Condition

South side of the Overlook walk  
elevator shaft

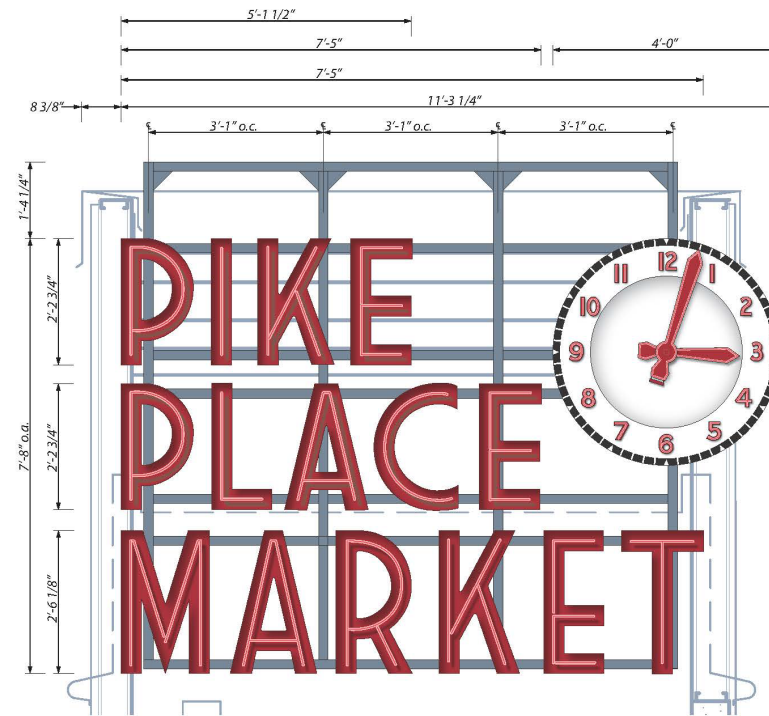


# Proposed new Condition

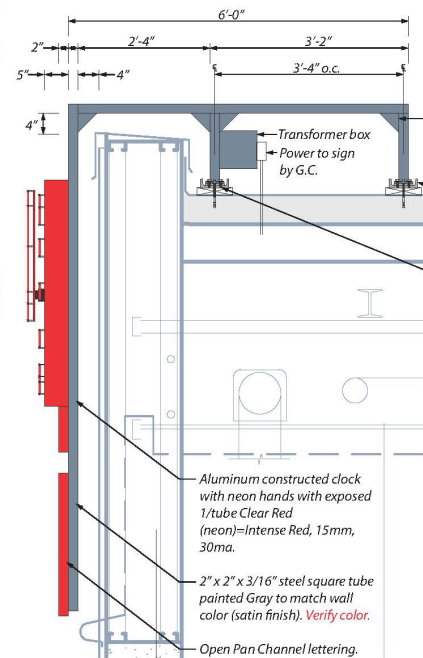
South side of the Overlook walk  
elevator shaft



# Elevations



1 **Front View- Detail**  
Scale: 1/2"=1'-0"



2 **Side View**  
Scale: 1/2"=1'-0"

- 1/4" Steel gusset plates painted Gray to match wall color (satin finish). *Verify color.*
- 6" x 2" x 3/8" steel C channel mounting stringers painted Gray to match wall color (satin finish). *Verify color.*
- (4 per plate) 1/2" x 1" HSS rated bolts with lock washers drilled and tapped.
- Transformers to be contained within transformer box. Power to sign by others 120volt 20 amp circuit req. *Verify circuits required.*
- Seal all wall penetrations with heavy duty all weather silicone- clear.
- Aluminum constructed clock with neon hands with exposed 1/tube Clear Red (neon)=Intense Red, 15mm, 30ma.
- 2" x 2" x 3/16" steel square tube painted Gray to match wall color (satin finish). *Verify color.*
- Open Pan Channel lettering. Interior and exterior pans painted Red to match Sherwin Williams "Real Red" SW 6868 (satin finish). Exposed 1/tube Clear Red (neon)=Intense Red, 15mm, 30ma.

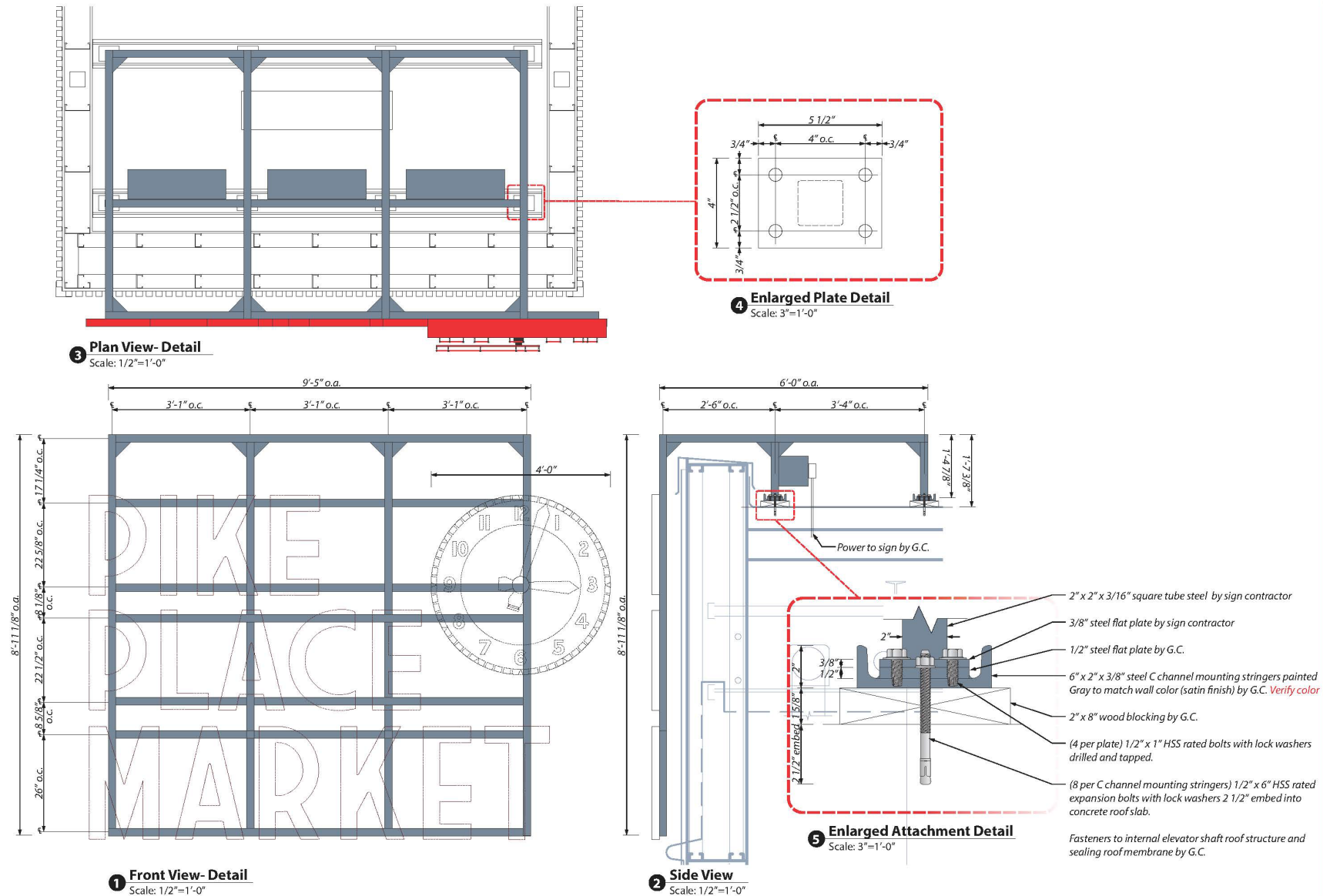


3 **South Elevation Partial**  
Scale: 1/4"=1'-0"

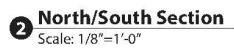
4 **Plan View- Detail**  
Scale: 1/4"=1'-0"



# Elevations Details



10/10/2019



# Additional Images

---

