

ADITI CHAI

SIGN PACKAGE





ADITI CHAI

AUTHENTIC MASALA TEA



ADITI CHAI

AUTHENTIC MASALA TEA



PMS 155 C

PMS 158 C

PMS 181 C

PMS 166 C

BRAND COLORS

CLIENT BRAND ASSETS



2902 4TH AVE SOUTH
SEATTLE WA 98134
206.682.7738
WESTERNNEON.COM

ADITI CHAI – SIGN PACKAGE

The design depicted herein is the sole property of Western Neon Inc., and may not be reproduced in whole or in part without prior written consent. Actual color, letter sizes and graphic layout may vary slightly due to the properties of materials. Colors may vary depending on media substrate. This sign is intended to be installed in accordance with Article 600 of the National Electrical Code and/or other applicable local codes. This includes proper grounding and bonding of the sign. The location of the disconnect switch after installation shall comply with Article 600.6 (A) (1) of the National Electric Code.



DRAWN: CORY S	DATE 09.26.24	JOB NO. 16943 Aditi Chai
CHECKED: XXXXXXXXXX	DATE 00.00.00	DRAWING TITLE COMPANY BRANDING
DRAWING NO. BRAND-01		VER. 1
PAGE 2		



EXISTING SIGNAGE

EXISTING SUSPENDED SIGN: ±19" X 36", 8' GTB



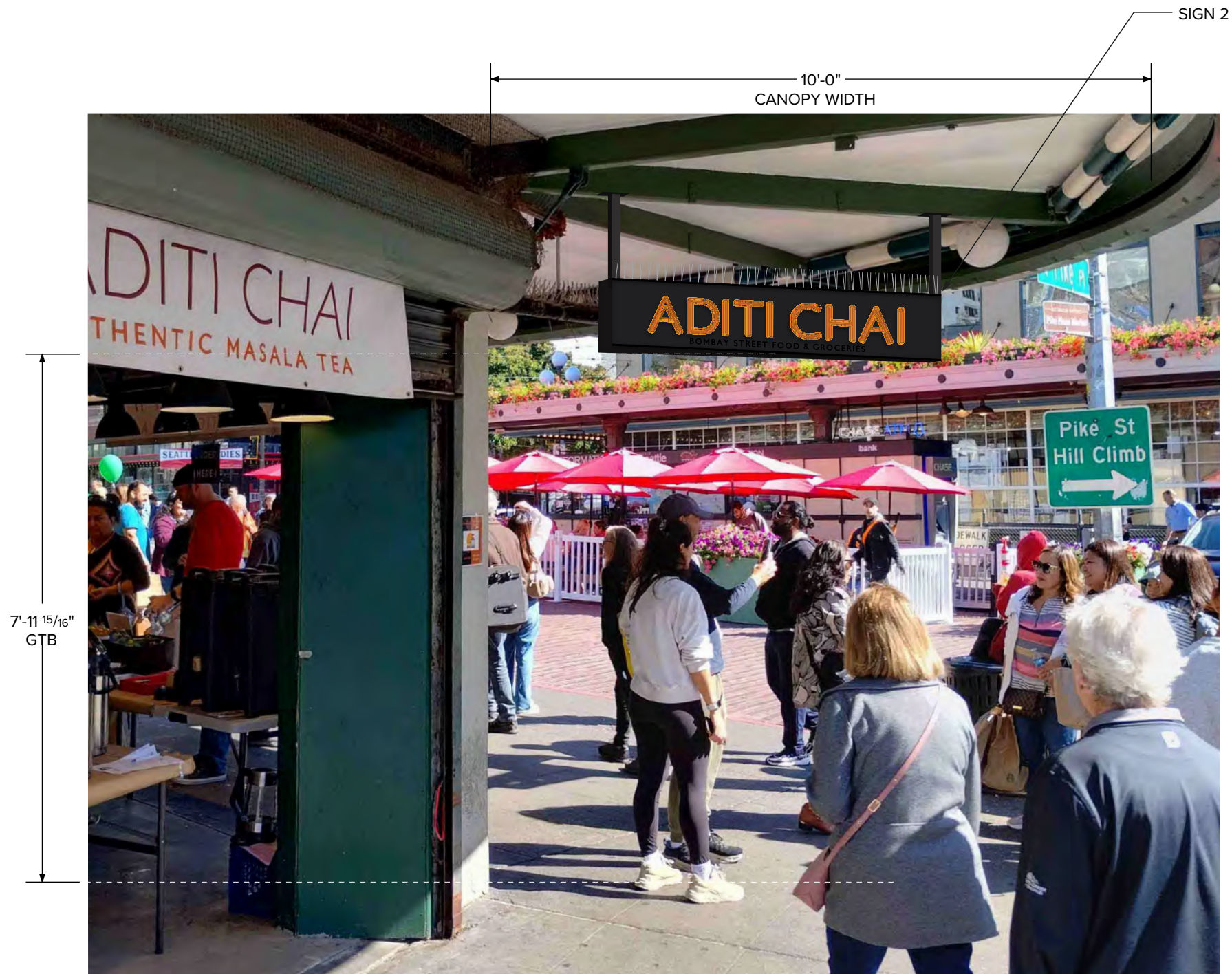
2902 4TH AVE SOUTH
SEATTLE WA 98134
206.682.7738
WESTERNNEON.COM

ADITI CHAI – SIGN PACKAGE

The design depicted herein is the sole property of Western Neon Inc., and may not be reproduced in whole or in part without prior written consent. Actual color, letter sizes and graphic layout may vary slightly due to the properties of materials. Colors may vary depending on media substrate. This sign is intended to be installed in accordance with Article 600 of the National Electrical Code and/or other applicable local codes. This includes proper grounding and bonding of the sign. The location of the disconnect switch after installation shall comply with Article 600.6 (A) (1) of the National Electric Code.



DRAWN: CORY S	DATE 05.29.25	JOB NO. 16943 Aditi Chai	
CHECKED: XXXXXXXXXX	DATE 00.00.00	DRAWING TITLE ELEVATION	
ISA		DRAWING NO. ELEV-02	
UL		VER. 3.3	
RECYCLE		PAGE 3	



PROPOSED SIGN 2 (OPT A4)

OPTION
A4

CITRUS DOUBLE TUBE NEON OVER ORANGE PAINTED LOGOTYPE



SIMULATED NIGHT VIEW - PROPOSED SIGN 2






2902 4TH AVE SOUTH
SEATTLE WA 98134
206.682.7738
WESTERNNEON.COM

ADITI CHAI – SIGN PACKAGE

The design depicted herein is the sole property of Western Neon Inc., and may not be reproduced in whole or in part without prior written consent. Actual color, letter sizes and graphic layout may vary slightly due to the properties of materials. Colors may vary depending on media substrate. This sign is intended to be installed in accordance with Article 600 of the National Electrical Code and/or other applicable local codes. This includes proper grounding and bonding of the sign. The location of the disconnect switch after installation shall comply with Article 600.6 (A) (1) of the National Electric Code.



DRAWN: CORY S	DATE 03.29.25	JOB NO. 16943 Aditi Chai	
CHECKED: XXXXXXXXXX	DATE 00.00.00	DRAWING TITLE ELEVATION	
  		DRAWING NO. ELEV-02-A4	VER. 3.3
			PAGE 4



PROPOSED SIGN 2 - OPTION A4 - STREET VIEW



2902 4TH AVE SOUTH
SEATTLE WA 98134
206.682.7738
WESTERNNEON.COM

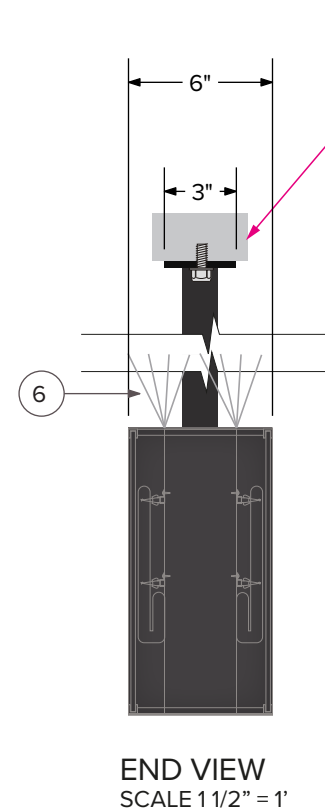
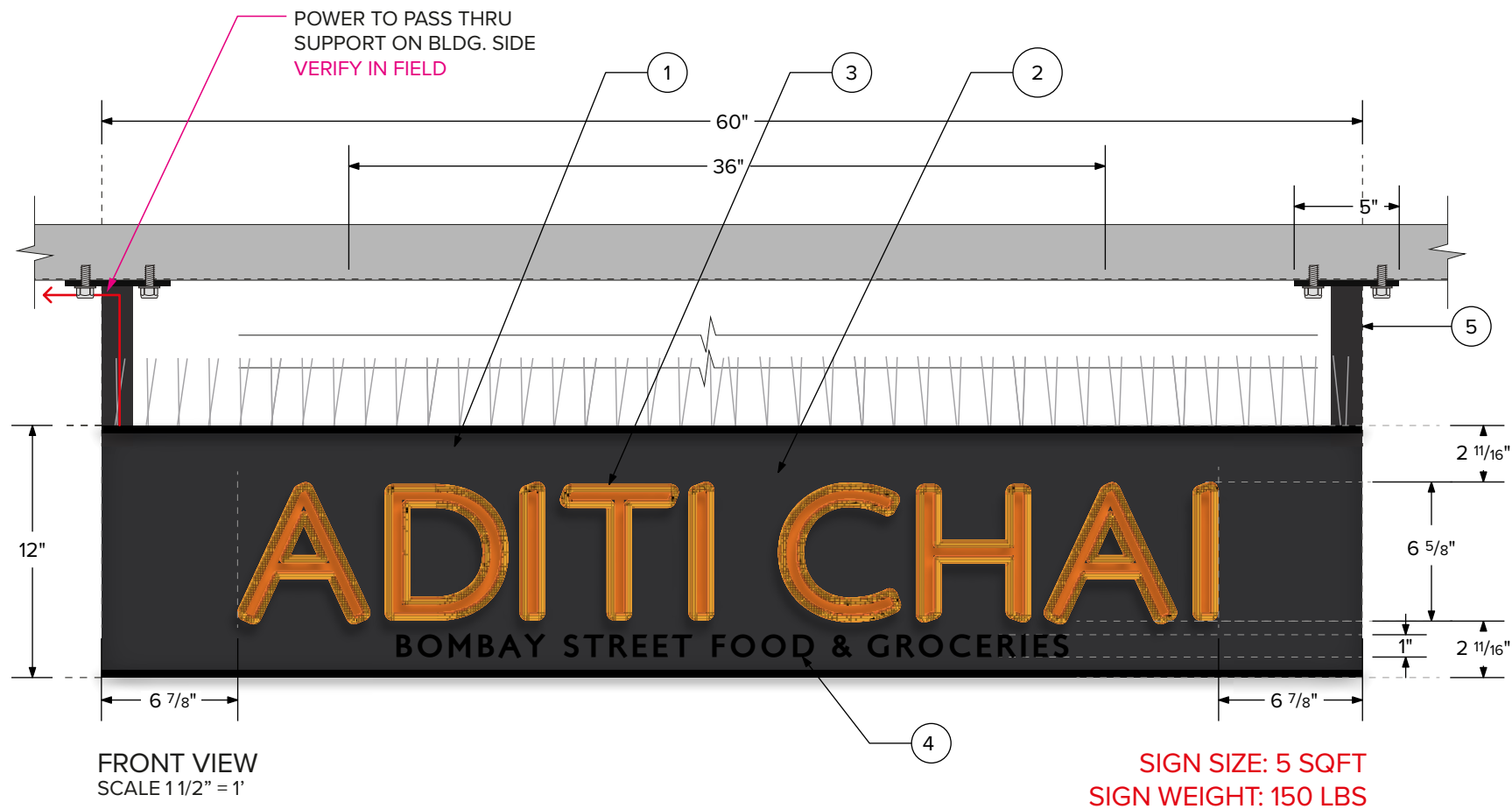
ADITI CHAI – SIGN PACKAGE

The design depicted herein is the sole property of Western Neon Inc., and may not be reproduced in whole or in part without prior written consent. Actual color, letter sizes and graphic layout may vary slightly due to the properties of materials. Colors may vary depending on media substrate. This sign is intended to be installed in accordance with Article 600 of the National Electrical Code and/or other applicable local codes. This includes proper grounding and bonding of the sign. The location of the disconnect switch after installation shall comply with Article 600.6 (A) (1) of the National Electric Code.



DRAWN: CORY S	DATE 03.29.24
CHECKED: XXXXXXXXXX	DATE 00.00.00

JOB NO. 16943 Aditi Chai	
DRAWING TITLE ELEVATION	
DRAWING NO. ELEV-02	VER. 3.3
PAGE 5	



VERIFY CANOPY SUPPORT DIMENSIONS

- 1 SIGN BODY: FABRICATED ALUMINUM, .090" ALUMINUM SIDES, PAINT BLACK SATIN FINISH
- 2 3/16" CLEAR ACRYLIC FACES, HELD IN WITH ALUMINUM CHANNEL OR RETAINER.
- 3 10MM CITRUS NEON DOUBLE TUBE GLASS. MOUNT TO SIGN USING 40MM CLEAR ACRYLIC SUPPORTS. MASKED & PAINTED ORANGE PMS 158C BEHIND GLASS ON FACE.
- 4 LOWER COPY: GLOSS BLACK HAND PAINTED ON SIGN FACE
- 5 SIGN IS MOUNTED CANOPY SUPPORT WITH 1 1/12" ALUMINUM SQUARE TUBE SUPPORTS WELDED TO 1/4" ALUMINUM MOUNTING PLATES. PAINTED BLACK SATIN FINISH, ATTACH TO CANOPY STRUCTURE WITH FOUR 1/2" THREADED BOLTS. VERIFY IN FIELD
- 6 BIRD SPIKES MOUNTED ON TOP OF SIGN
- 7 CABINET HOUSES POWER SUPPLY(S). 120V/20A DEDICATED SIGN CIRCUIT IN CONDUIT TO WITHIN 6FT OF SIGN PROVIDED BY CLIENT. WN TO MAKE FINAL ELECTRICAL CONNECTION TO SIGN.

OPTION
A4

SIGN 2: BLADE SIGN

MANUFACTURE & INSTALL ONE (1) DOUBLE FACED NEON ILLUMINATED SUSPENDED BLADE SIGN



2902 4TH AVE SOUTH
SEATTLE WA 98134
206.682.7738
WESTERNNEON.COM

ADITI CHAI – SIGN PACKAGE

The design depicted herein is the sole property of Western Neon Inc., and may not be reproduced in whole or in part without prior written consent. Actual color, letter sizes and graphic layout may vary slightly due to the properties of materials. Colors may vary depending on media substrate. This sign is intended to be installed in accordance with Article 600 of the National Electrical Code and/or other applicable local codes. This includes proper grounding and bonding of the sign. The location of the disconnect switch after installation shall comply with Article 600.6 (A) (1) of the National Electrical Code.



DRAWN: CORY S	DATE 05.29.25	JOB NO. 16943 Aditi Chai
CHECKED: XXXXXXXXXX	DATE 00.00.00	DRAWING TITLE BLADE SIGN- OPT A4
DRAWING NO. SIGN-02		VER. 3.4
PAGE 6		

THANK YOU

