

# Victor Steinbrueck Park: Skate Deterrent Retrofit

---

David Graves, Strategic Advisor

Amy Lindemuth, Sr. Landscape Architect | May 2025



**Seattle**  
Parks & Recreation

Healthy People, Thriving Environment, Vibrant Community

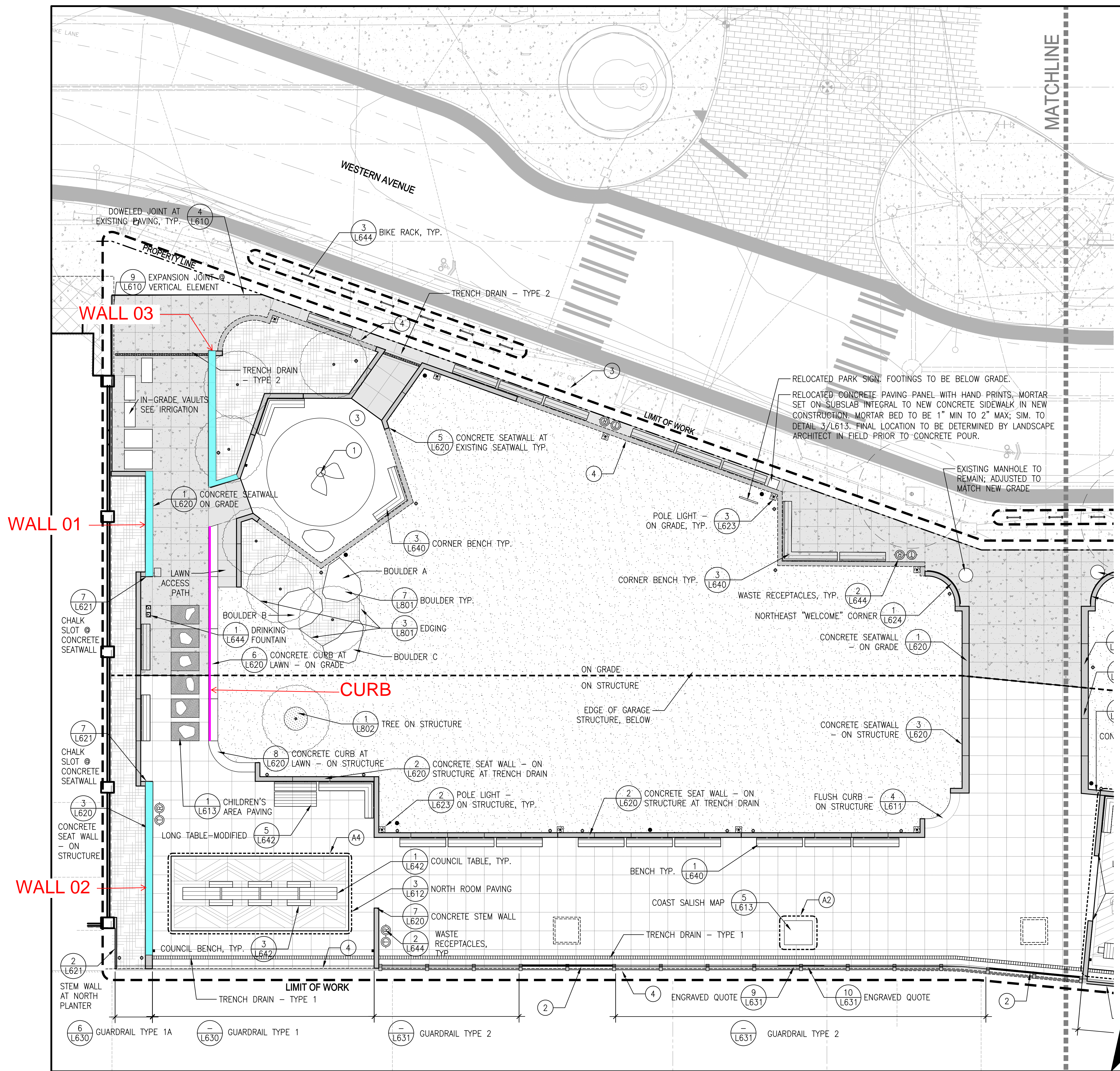
#SeattleShines





# VICTOR STEINBRUECK PARK SKATE DETERRENT RETROFIT

## SITE PLAN NORTH



**SEATTLE PARKS AND RECREATION**  
Engineering + Design Services  
300 ELLIOTT AVE., W., SUITE 100  
SEATTLE, WA 98119

**Seattle Parks & Recreation**





Wall 01



Wall 02

# EXISTING CONDITIONS

**SEATTLE PARKS  
AND RECREATION**

Engineering + Design Services

300 ELLIOTT AVE. W., SUITE 100  
SEATTLE, WA 98119



**Seattle  
Parks & Recreation**





Curb



Wall 03

# EXISTING CONDITIONS

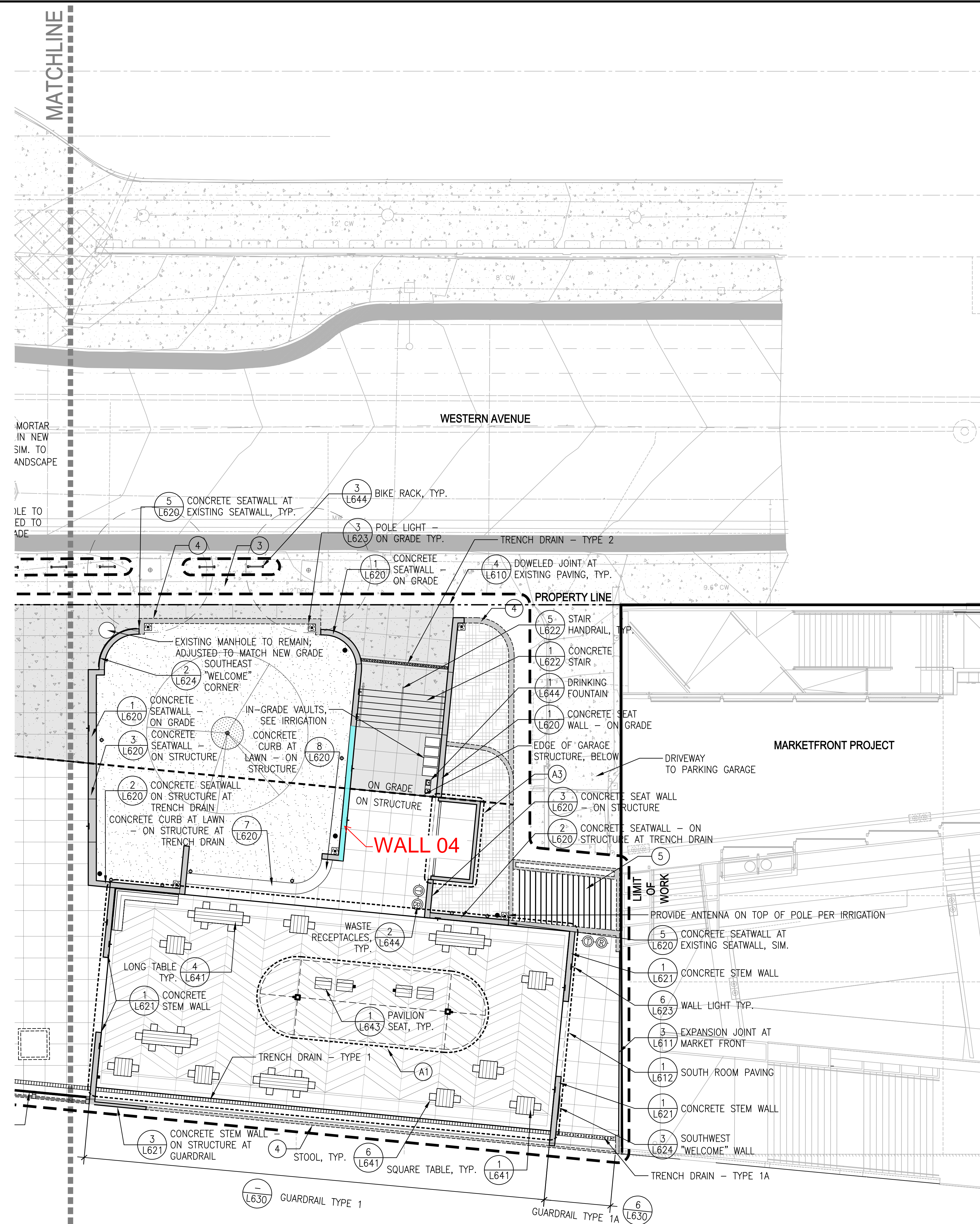
**SEATTLE PARKS  
AND RECREATION**  
Engineering + Design Services  
300 ELLIOTT AVE. W., SUITE 100  
SEATTLE, WA 98119





# VICTOR STEINBRUECK PARK SKATE DETERRENT RETROFIT

## SITE PLAN SOUTH







Wall 04

# EXISTING CONDITIONS

**SEATTLE PARKS  
AND RECREATION**  
Engineering + Design Services  
300 ELLIOTT AVE. W., SUITE 100  
SEATTLE, WA 98119







# HEMI GRINDERMINDER™

SKATEBOARD AND BIKE DETERRENT

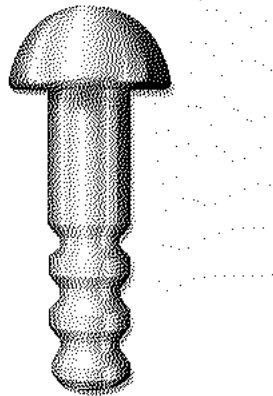
## PRODUCT DETAIL

The new Hemisphere or **"Hemi" GrinderMinder** is another version of our original spherical design. The "Hemi" will give a lower profile and is inserted at a 90 degree angle into the stone or concrete, rather than at an angle. The stem of the "Hemi" is identical to our original GrinderMinder, so that it will provide the same stability and resistance to vandalism.

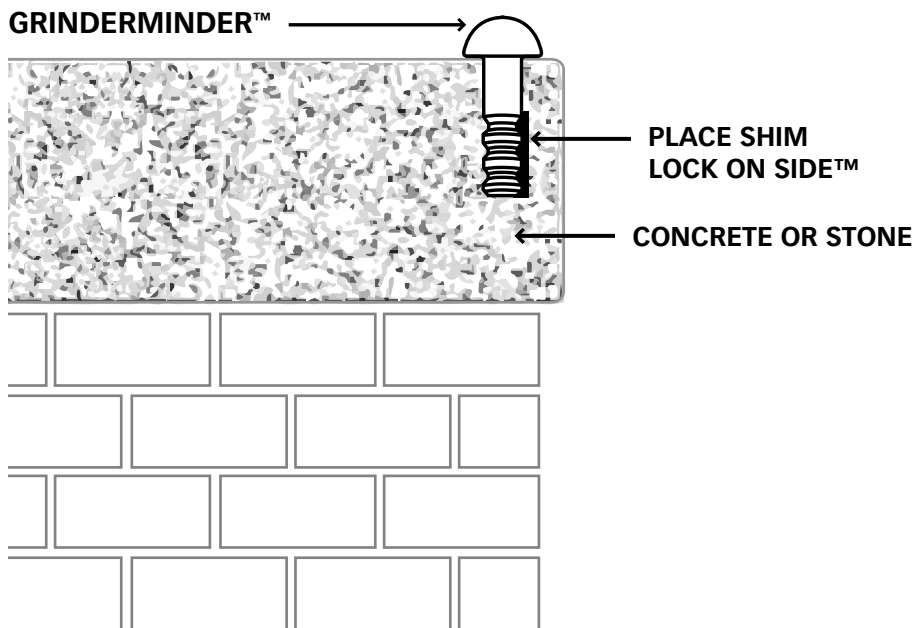
### AVAILABLE FINISHES

**SOLID STAINLESS STEEL WITH A BRUSHED FINISH STANDARD**  
(our most popular choice)

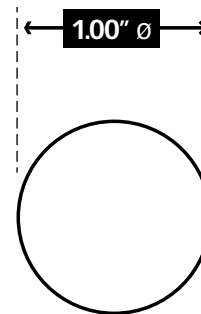
**CAN BE UPGRADED TO:**  
**SOLID STAINLESS STEEL WITH A BLACK OXIDE FINISH**  
(soft, matte black appearance)



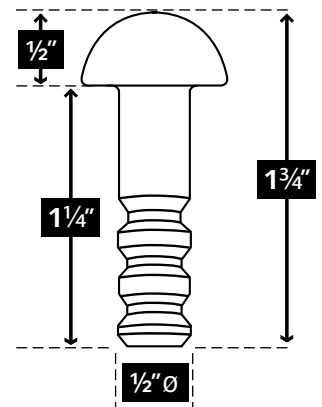
## INSTALLATION & PRODUCT DETAIL



TOP VIEW



FRONT VIEW



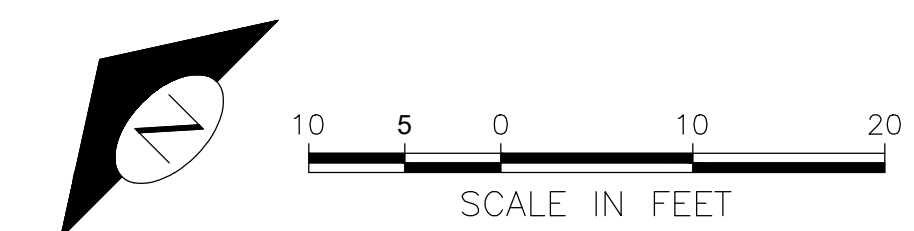




HEMI GRIND TO A HALT  
EXAMPLE INSTALL

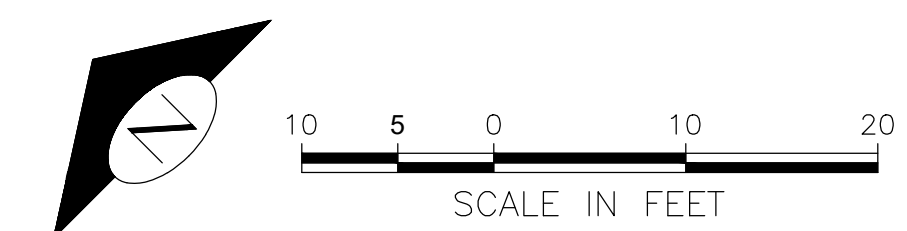


LAYOUT PLAN NORTH  
2'-0" O.C. SPACING





LAYOUT PLAN SOUTH  
2'-0" O.C. SPACING





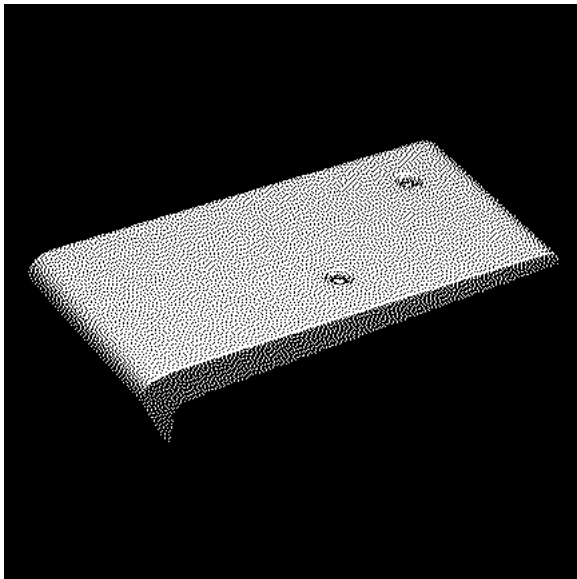
# PRODUCT DETAILS

## FR 0.12

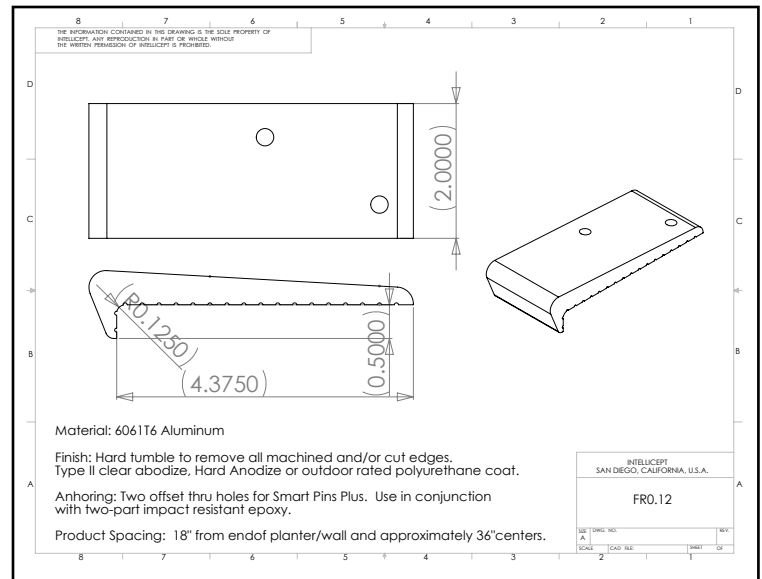
(FR Series - Surface Mount Aluminum)

**Description:** This part is designed for walls with 1/8" radius edge (may be used in place of model FA 90). FR0.12 is most commonly used on granite, marble, stone, block, brick, or other surfaces with a hard corner. This part uses two SMART PINS PLUS anchors.

**This product is not intended for use on steps, stairs, sidewalk curb, or any pedestrian trafficked surfaces.**



(shown in Clear Anodize)



**Material:** 6061-T6 Aluminum

**Finish:** Hard tumble to remove all machined and/or cut edges. Aluminum finish options include Type II Clear Anodize or Hard Anodize.

**Corner Radius:** For square corner from 1/8" - 3/8" radius.

**Outside Dimensions:** 2" (wide) x 4-3/4" (deep) x 1" (tall)

**Anchoring:** Anchored with two offset thru holes for SMART PINS PLUS anchors. Use anchors in conjunction with two-part epoxy.

**Product Spacing :** 18" from end of planters/walls and approximately 36" centers. Do not apply at grout joints.

**SKATE STOPPERS**  
1547 N. Cuyamaca, El Cajon, CA 92020  
Tel 619-447-6374 Fax 619-447-6396  
[www.skatestoppers.com](http://www.skatestoppers.com)

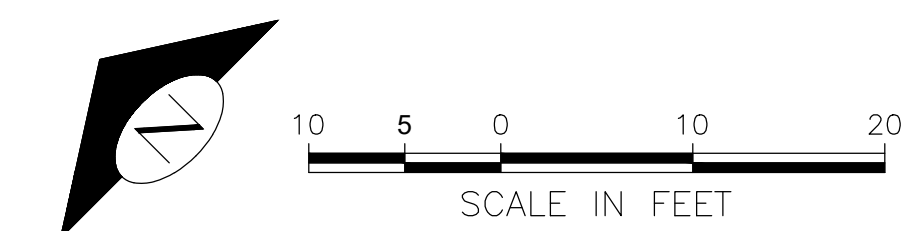




FLAT RADIUS SKATESTOPPERS EXAMPLE INSTALL

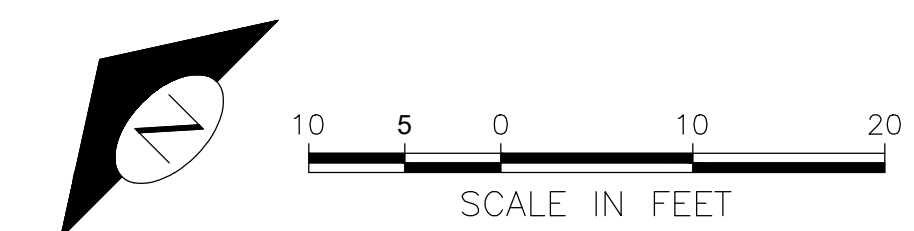


LAYOUT PLAN NORTH  
3'-0" O.C. SPACING





LAYOUT PLAN SOUTH  
3'-0" O.C. SPACING





# PROPOSED CURB PROTECTION



STEEL ANGLE  
LENGTH OF CURB EDGE

**SEATTLE PARKS  
AND RECREATION**

Engineering + Design Services

300 ELLIOTT AVE. W., SUITE 100  
SEATTLE, WA 98119



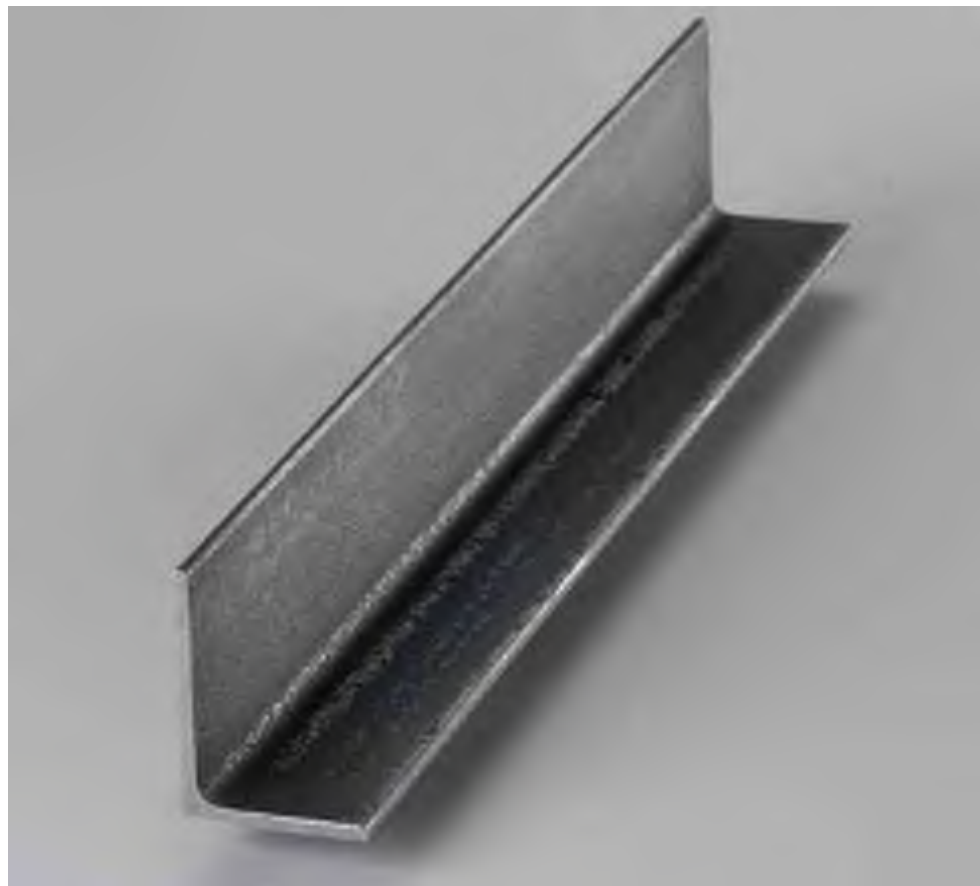
**Seattle  
Parks & Recreation**



# PROPOSED CURB PROTECTION



OPTION A:  
316 STAINLESS STEEL  
UNEQUAL LEG ANGLE  
3" X 2", 1/4 THK  
1/2" THK SS CONCRETE ANCHOR  
FASTENERS



OPTION B:  
A36 HOT ROLLED STEEL  
UNEQUAL LEG ANGLE, GALV  
3" X 2", 1/4 THK  
1/2" THK GALVANIZED CONCRETE  
ANCHOR FASTENERS

*SEATTLE PARKS  
AND RECREATION*

Engineering + Design Services

300 ELLIOTT AVE. W., SUITE 100  
SEATTLE, WA 98119



**Seattle**  
Parks & Recreation



# CURB PROTECTION PRECEDENT CONCEPTS



STAINLESS STEEL WALL  
CORNER PROTECTION



HISTORIC STEEL CURB  
EDGE PROTECTION

**SEATTLE PARKS  
AND RECREATION**  
Engineering + Design Services  
300 ELLIOTT AVE. W., SUITE 100  
SEATTLE, WA 98119



# Thank you!



**Seattle**  
Parks & Recreation

Healthy People, Thriving Environment, Vibrant Community

