

The Community Space

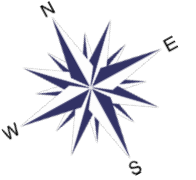
MHC Use and Design

Background

- New breakroom for Market community
- Farmers, craftspeople, commercial tenants and buskers
- Place to eat lunch, warm up in the winter or cool down on hot days
- FOB access for any community member with a tenant restroom FOB

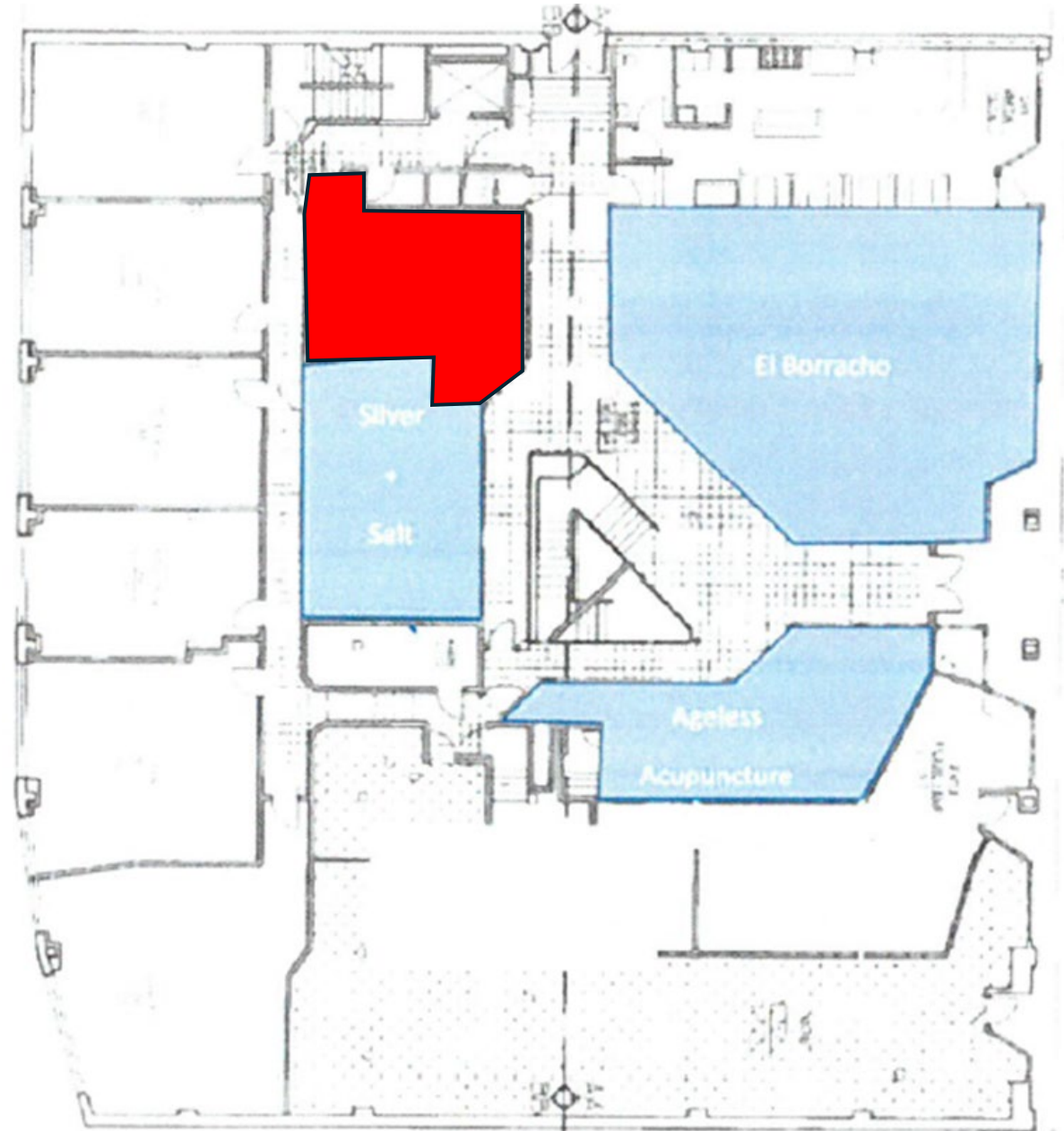
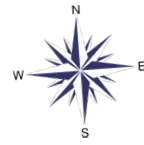
Site Map

- Located at 1519 1st Ave
- Upper Sanitary Market
- Adjacent to new Rummage Hall



Detailed Map

- Size: 444 sqft
- Previous use was the Senior Center Activity Space
- Relevant Guideline
 - 2.5.4(a) – 1st Priority for sale of used goods, affordable daily necessities or repair services, particularly for District residents and low-income shoppers



Space Photo's – exterior entrance



Space Photo's

East Wall



South Wall



Space Photo's

North Wall



West Wall



Space Photo's

Tables



Chairs



Existing Signage



Proposed Signage



Proposed Signage Detail

- Colors:
 - SEA 63C3A5 (seafoam green)
 - FCEF38 (yellow)
 - FFFCFD (white)
 - 7D57A4 (purple)
 - 52C0EE (sky blue)
 - 4A5DAA (cobalt blue)
 - 8D91A6 (gray)
 - F0493D (red)
 - 77C047 (green)
 - 0E0C08 (black)
- Dimensions: 46" x 18"
- Material: Plywood sign with acrylic paint
- Font: Hand painted

