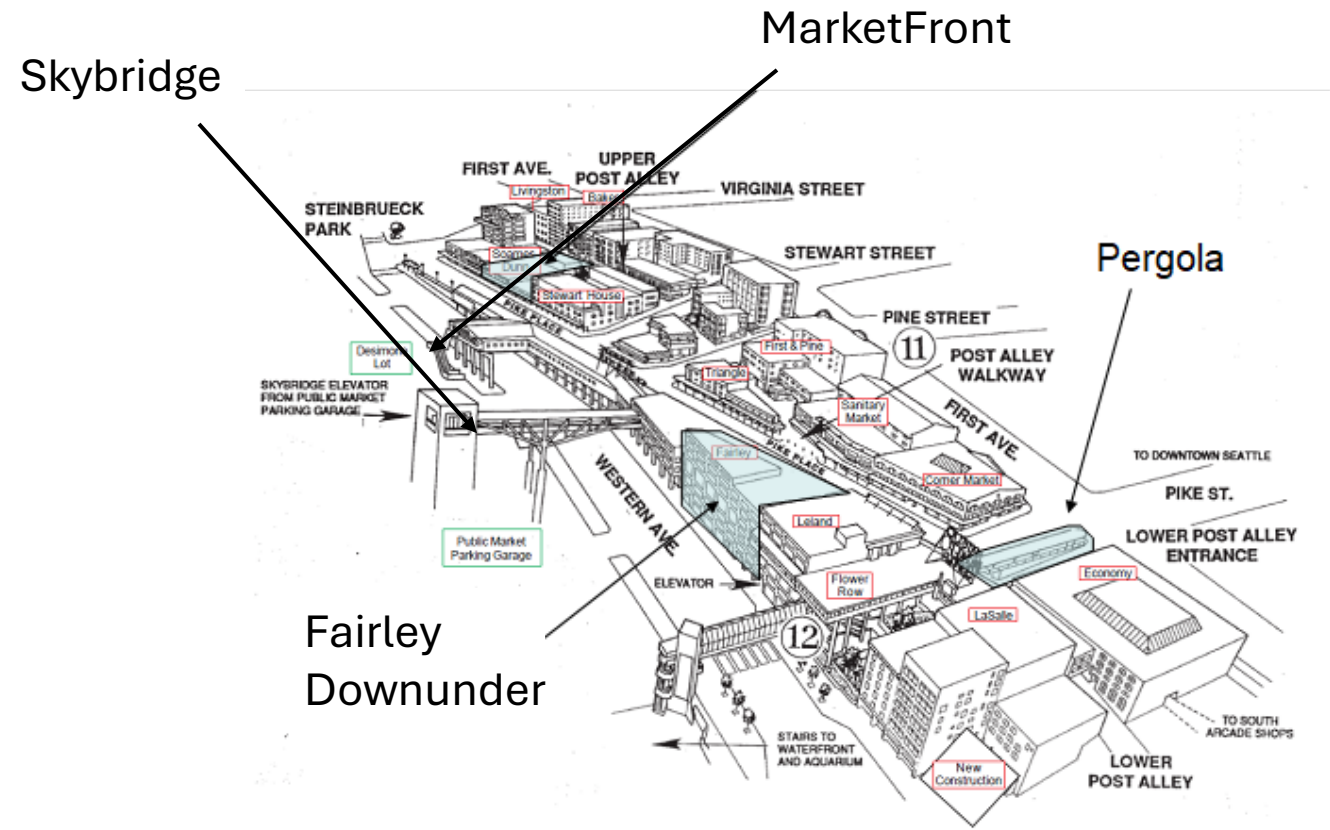
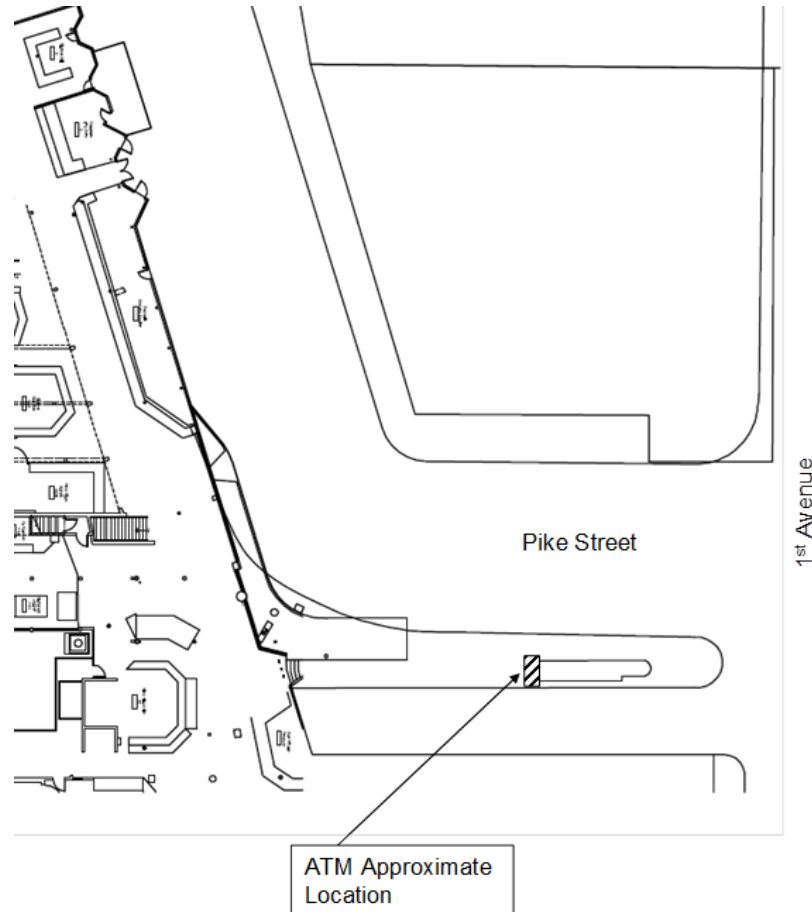


Site Plan

- Four Locations
 - Pergola
 - Fairley DownUnder
 - Skybridge
 - MarketFront



Pergola Site Plan



1. Pergola Location - through the wall ATM specifications.

GT5000

Integrated Illuminated Topper Sign
High Visibility LED Sign
Attract Customers

LCD Screen
15 inch color TFT-LCD Panel
High bright LED backlight (800cd/m²)
1024 x 768 (XGA+) Resolution

Printer
80mm/3" Receipt Printer
200DPI monographic printing

PIN Entry Device
16-key alpha numeric keypad
PCI / Interac Certified
Triple-DES (TDES) EPP

Rear Service Panel
7 inch color touch screen
Backlit TFT LCD panel
800 x 480 Resolution

Communication
56Kb Internal Modem
TCP/IP Ethernet - SSL

CPU
Cortex-A8 32-bit CPU
DDR2 256MB RAM / WinCE 6.0 OS
Electronic Journal > 40K transactions

ADA
Voice Guidance
Lighted Transaction Guidance
Accessible Keypad Layout

Card Reader
DIP Style Magnetic Card Reader
EMV - Optional

Security
UL291 Business Hours Vault
Electronic Lock or Cencen (optional)

Cash Dispenser
1 x 1700 Note Cassette
2 x 1700 Note Multi-Cassette
3 x 1700 Note Multi-Cassette
Presenter Module

Dimensions
Height = 56.7"
Width = 24.1"
Depth = 33.9"
Weight = 570 lbs

Operating Environment
Temperature range : 40°F - 95°F
Relative humidity : Non-condensing=15%-85%

Power Requirements
110/220 VAC ± 10%, 50/60 Hz, 145 Watts

GENMEGA
www.genmega.com

Specifications for the ATM machines for Fairley, Skybridge and Marketfront

HYOSUNG
INNOVUE

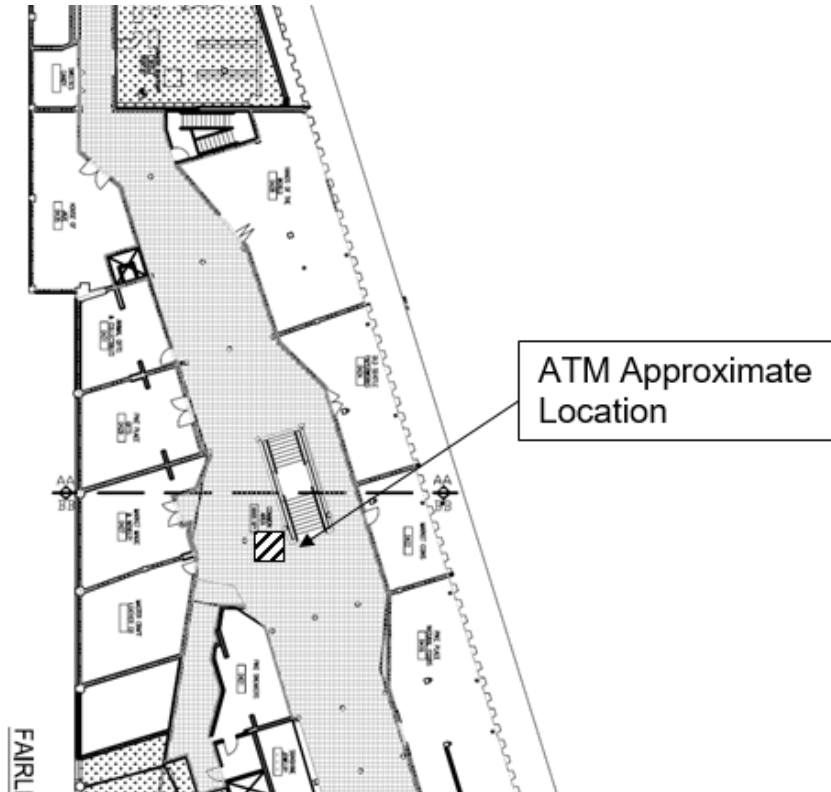
Halo II

Pergola Site Plan

Color: Textured Grey



Fairley Downunder Site Plan



Specifications for the ATM machines for Fairley, Skybridge and Marketfront

HYOSUNG
INNOVUE

Halo II

Hyosung is moving at the speed of retail.

The HALO II provides the best value of any retail cash dispenser in the industry with added peace of mind from enhanced security features at an affordable price. This new member of the Hyosung retail family offers an improved UL 291 business hours safe with added break-in protection, an EMV card reader, a PCI 3.0 compliant keypad and secure communications protection using TLS (Transport Layer Security) transmission encryption.

Features

Innovation

The HALO II offers a unique, sleek design perfect for locations ranging from small convenience stores to high-end retail ATM locations. Eye-catching, LED lighting around the keypad attracts more users to drive additional transactions and revenue to your bottom line. The Hyosung intuitive application interface is presented on a vivid 10.1-inch LCD screen, and all user touch points (screen interface, keypad and cash exit) are positioned for optimal visibility and access.

Reliability

Hyosung continues to lead the industry in reliability and ease of service. The HALO II uses proven cash dispensing technology engineered for maximum uptime, widely regarded as the best in the industry.

Usability and Maintenance

The HALO II provides a highly intuitive operator menu program that enables first-time and veteran users to easily operate and service the machine. It incorporates Hyosung modular component architecture designed for high reliability, quick service and maximum accessibility.

Environmentally Friendly

The HALO II is equipped with energy-saving, long-lasting features, and parts designed to minimize environmental impact. The system uses components compatible with other Hyosung retail models, allowing customers to protect their investments in interchangeable spare parts. ATM users also have the paper-saving option of no receipt or screen display of a QR-encoded digital receipt.

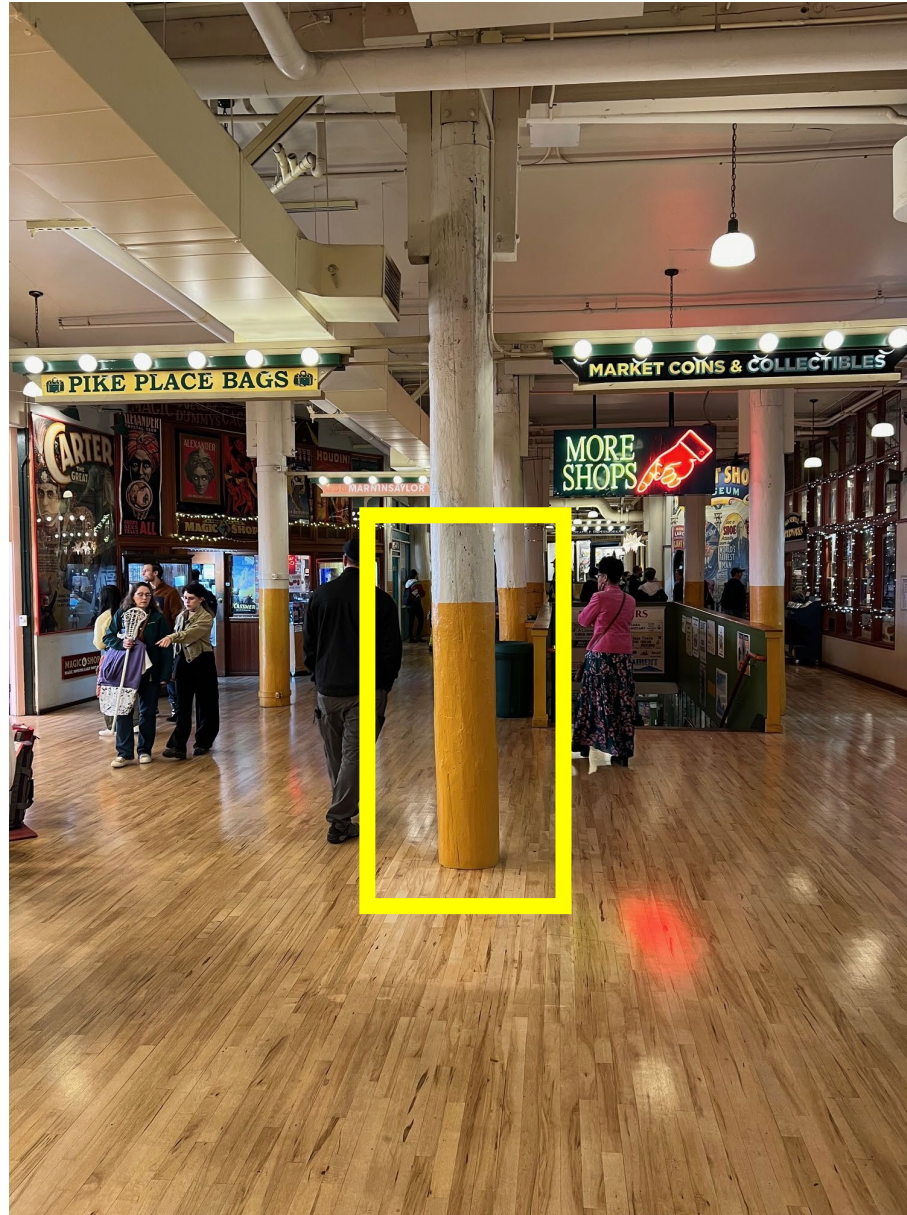


Fairley DownUnder Site Plan

Color: Textured Grey



TEXTURED GRAY

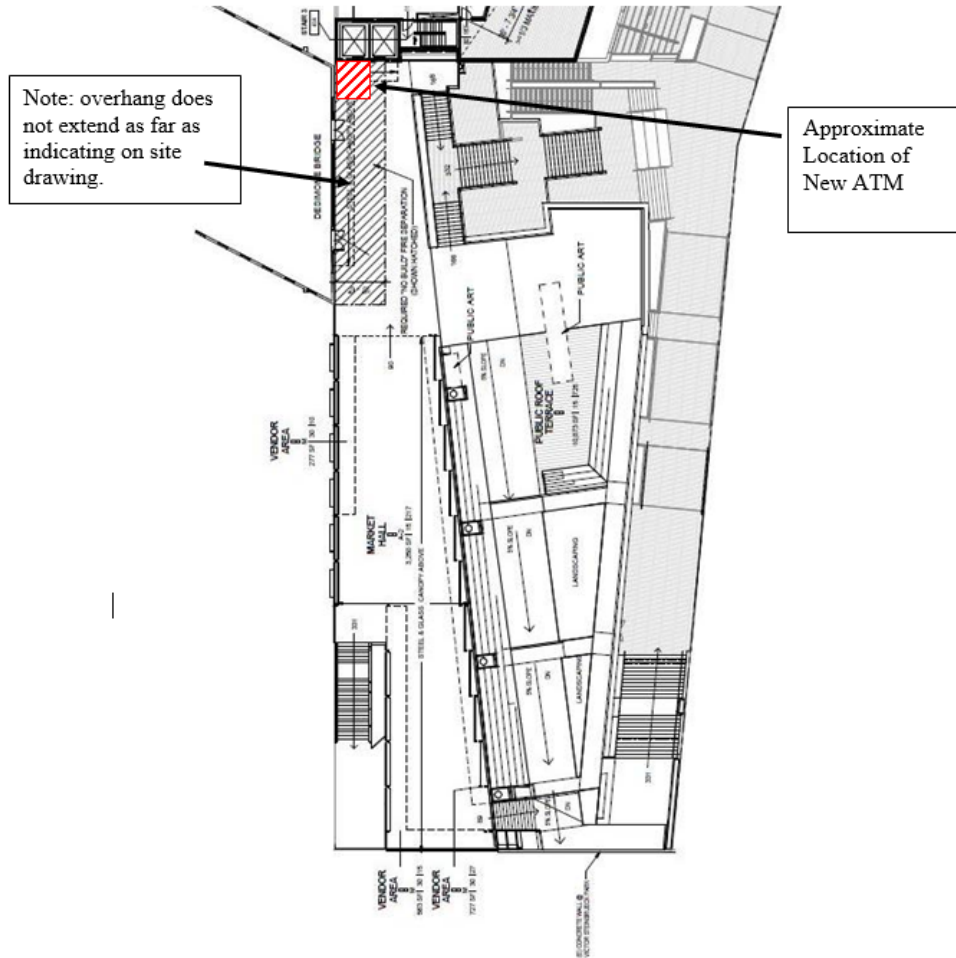


Fairley DownUnder Protection

- For added security DownUnder machine will feature steel surround
- Color to match – Textured Grey



MarketFront Site Plan



Specifications for the ATM machines for Fairley, Skybridge and Marketfront

HYOSUNG
INNOVUE

Halo II

Hyosung is moving at the speed of retail.

The HALO II provides the best value of any retail cash dispenser in the industry with added peace of mind from enhanced security features at an affordable price. This new member of the Hyosung retail family offers an improved UL 291 business hours safe with added break-in protection, an EMV card reader, a PCI 3.0 compliant keypad and secure communications protection using TLS (Transport Layer Security) transmission encryption.

Features

Innovation

The HALO II offers a unique, sleek design perfect for locations ranging from small convenience stores to high-end retail ATM locations. Eye-catching, LED lighting around the keypad attracts more users to drive additional transactions and revenue to your bottom line. The Hyosung intuitive application interface is presented on a vivid 10.1-inch LCD screen, and all user touch points (screen interface, keypad and cash exit) are positioned for optimal visibility and access.

Reliability

Hyosung continues to lead the industry in reliability and ease of service. The HALO II uses proven cash dispensing technology engineered for maximum uptime, widely regarded as the best in the industry.

Usability and Maintenance

The HALO II provides a highly intuitive operator menu program that enables first-time and veteran users to easily operate and service the machine. It incorporates Hyosung modular component architecture designed for high reliability, quick service and maximum accessibility.

Environmentally Friendly

The HALO II is equipped with energy-saving, long-lasting features, and parts designed to minimize environmental impact. The system uses components compatible with other Hyosung retail models, allowing customers to protect their investments in interchangeable spare parts. ATM users also have the paper-saving option of no receipt or screen display of a QR-encoded digital receipt.

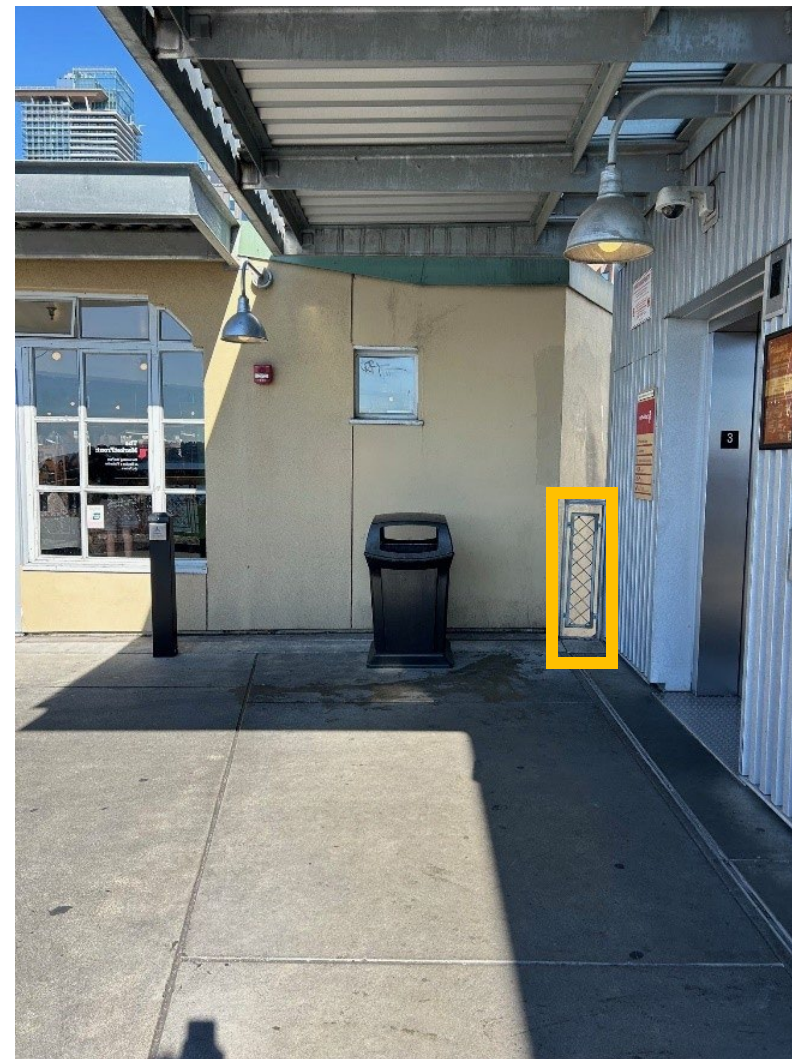


MarketFront Site Plan

Color: Textured Grey



TEXTURED GRAY

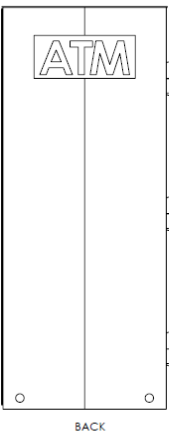
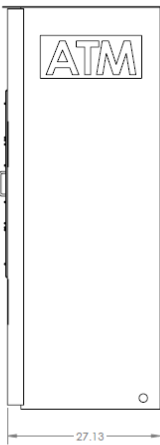
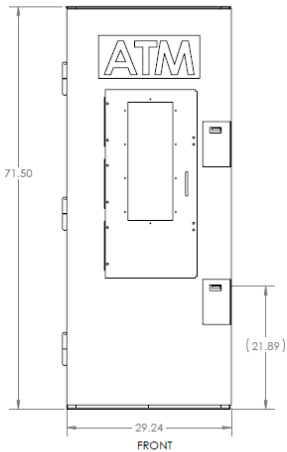


MarketFront ATM Enclosure

Color: Textured Grey



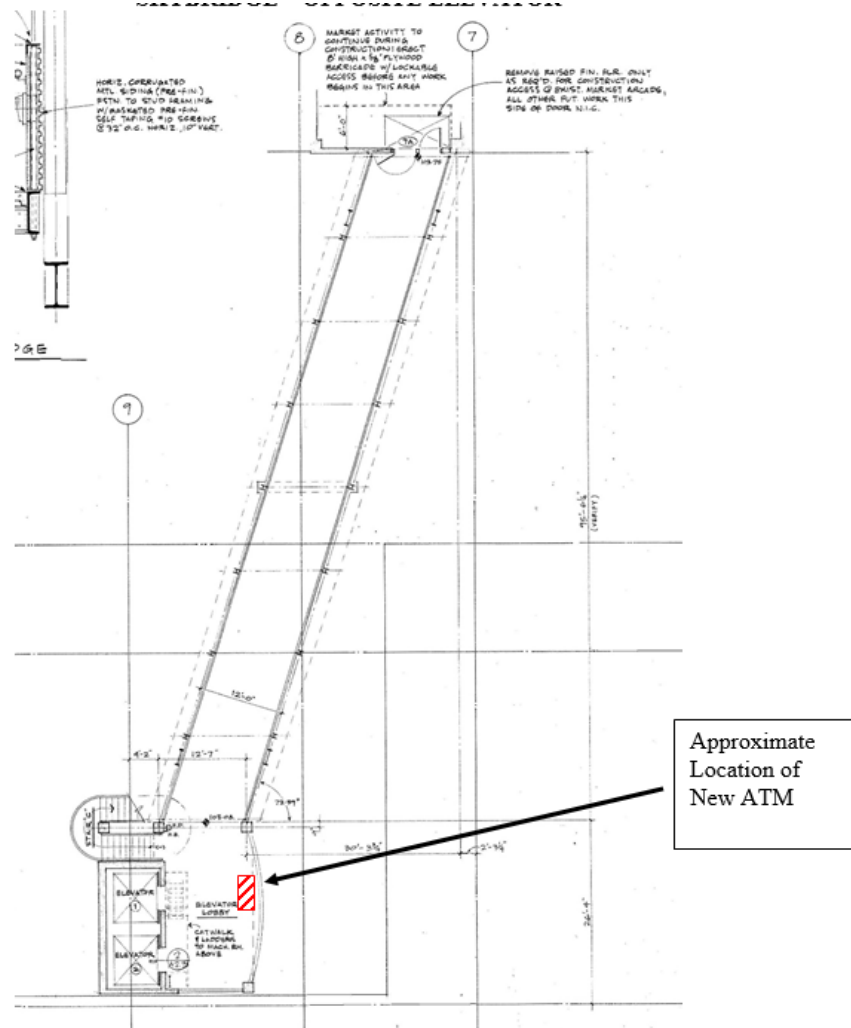
REVISION CHANGES:



LAST SAVED DATE: 1/6/2017

UNLESS OTHERWISE SPECIFIED: DIMENSIONS ARE IN INCHES SURFACE FINISH TOLERANCES: FRACTIONS DECIMALS ANGLES FRACTIONS DECIMALS ANGLES				TPI 972-276-2901 FAX 972-276-3451 1136 N. FIRST ST. GARLAND, TX. 75040 www.tpitexas.com	
DESIGN	NAME	SIGNATURE	DATE	TITLE	
DRAWN				ATM/ODU-1400	
CHECKED				ODU UNIVERSAL ENCLOSURE	
APPROVED				ODU-1400 ATM Enclosure Dimension	
DATE				SHEET 1 OF 1	
				REVISION	

Skybridge Site Plan



Specifications for the ATM machines for Fairley, Skybridge and Marketfront

HYOSUNG
INNOVUE

Halo II

Hyosung is moving at the speed of retail.

The HALO II provides the best value of any retail cash dispenser in the industry with added peace of mind from enhanced security features at an affordable price. This new member of the Hyosung retail family offers an improved UL 291 business hours safe with added break-in protection, an EMV card reader, a PCI 3.0 compliant keypad and secure communications protection using TLS (Transport Layer Security) transmission encryption.

Features

Innovation

The HALO II offers a unique, sleek design perfect for locations ranging from small convenience stores to high-end retail ATM locations. Eye-catching, LED lighting around the keypad attracts more users to drive additional transactions and revenue to your bottom line. The Hyosung intuitive application interface is presented on a vivid 10.1-inch LCD screen, and all user touch points (screen interface, keypad and cash exit) are positioned for optimal visibility and access.

Reliability

Hyosung continues to lead the industry in reliability and ease of service. The HALO II uses proven cash dispensing technology engineered for maximum uptime, widely regarded as the best in the industry.

Usability and Maintenance

The HALO II provides a highly intuitive operator menu program that enables first-time and veteran users to easily operate and service the machine. It incorporates Hyosung modular component architecture designed for high reliability, quick service and maximum accessibility.

Environmentally Friendly

The HALO II is equipped with energy-saving, long-lasting features, and parts designed to minimize environmental impact. The system uses components compatible with other Hyosung retail models, allowing customers to protect their investments in interchangeable spare parts. ATM users also have the paper-saving option of no receipt or screen display of a QR-encoded digital receipt.



MarketFront and Skybridge Protection

- MarketFront and Skybridge machines will feature steel surround similar to DownUnder
- Color to match – Textured Grey

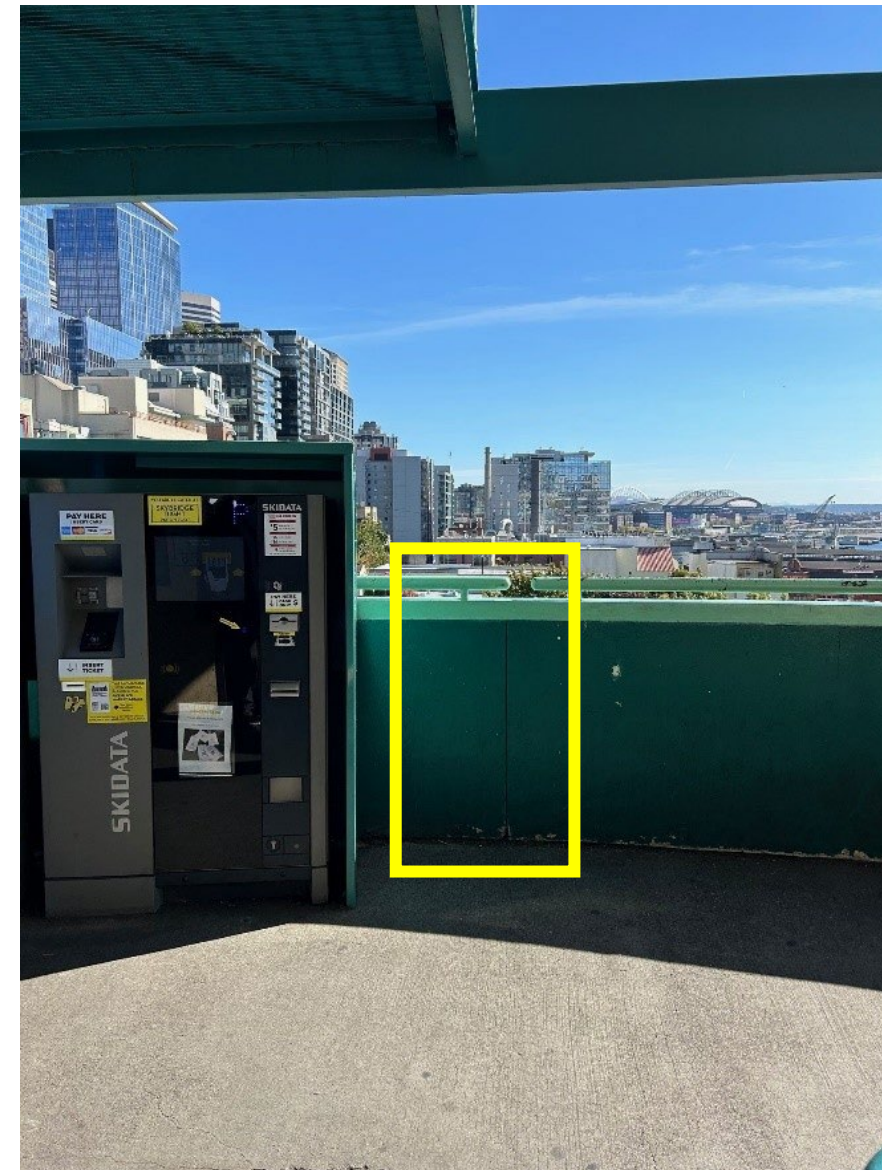


Skybridge Site Plan

Color: Textured Grey



TEXTURED GRAY



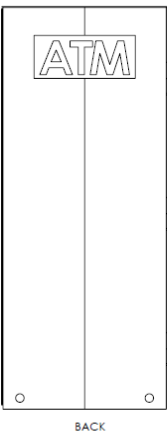
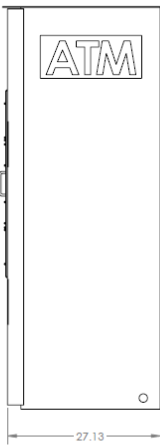
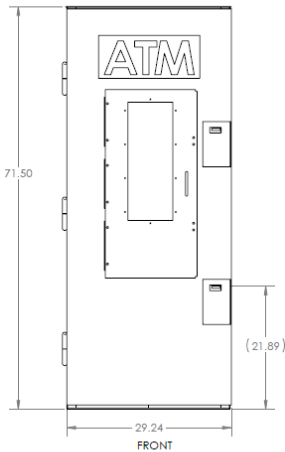
Skybridge ATM Enclosure

Color: Textured Grey



72 IN

REVISION CHANGES:

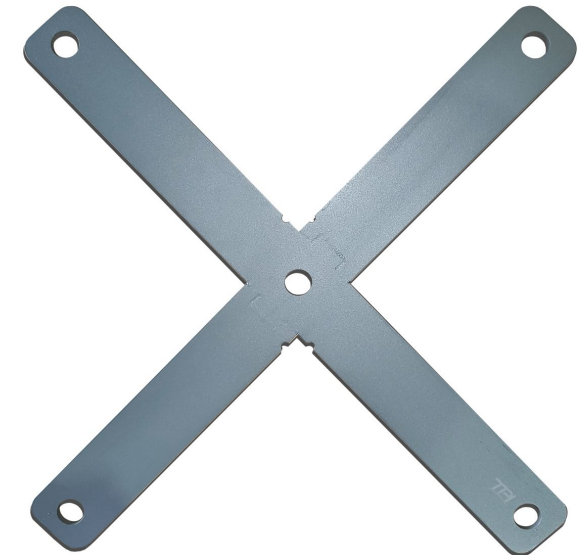


LAST SAVED DATE: 1/6/2017

UNLESS OTHERWISE SPECIFIED: DIMENSIONS ARE IN INCHES SURFACE FINISH TOLERANCES: .125" & .001 UNLESS NOTED OTHERWISE				FINISH		PAINT		DRAW AND BYPASS EDGES		TITLE	
DRAWN	NAME	SIGNATURE	DATE							TPI	
CHECKED										972-276-2901 FAX 972-276-3451	
APPROVED										1136 N. FIRST ST. GARLAND, TX. 75040	
DATE										www.tpitexas.com	
										ATM/ODU-1400	
										ODU UNIVERSAL ENCLOSURE	
										ODU-1400 ATM Enclosure Dimension	
										SHEET 1 OF 1	
										REVISION -	

Method of Attachment

- 4 - 1/2"x 5 inch anchors to secure the units to the floor.
- Attached via inside the bottom of the machines (not visible to public)



Signage

- Replace “bank” with “ATM” on north and west sides
- Same color “white” and font

