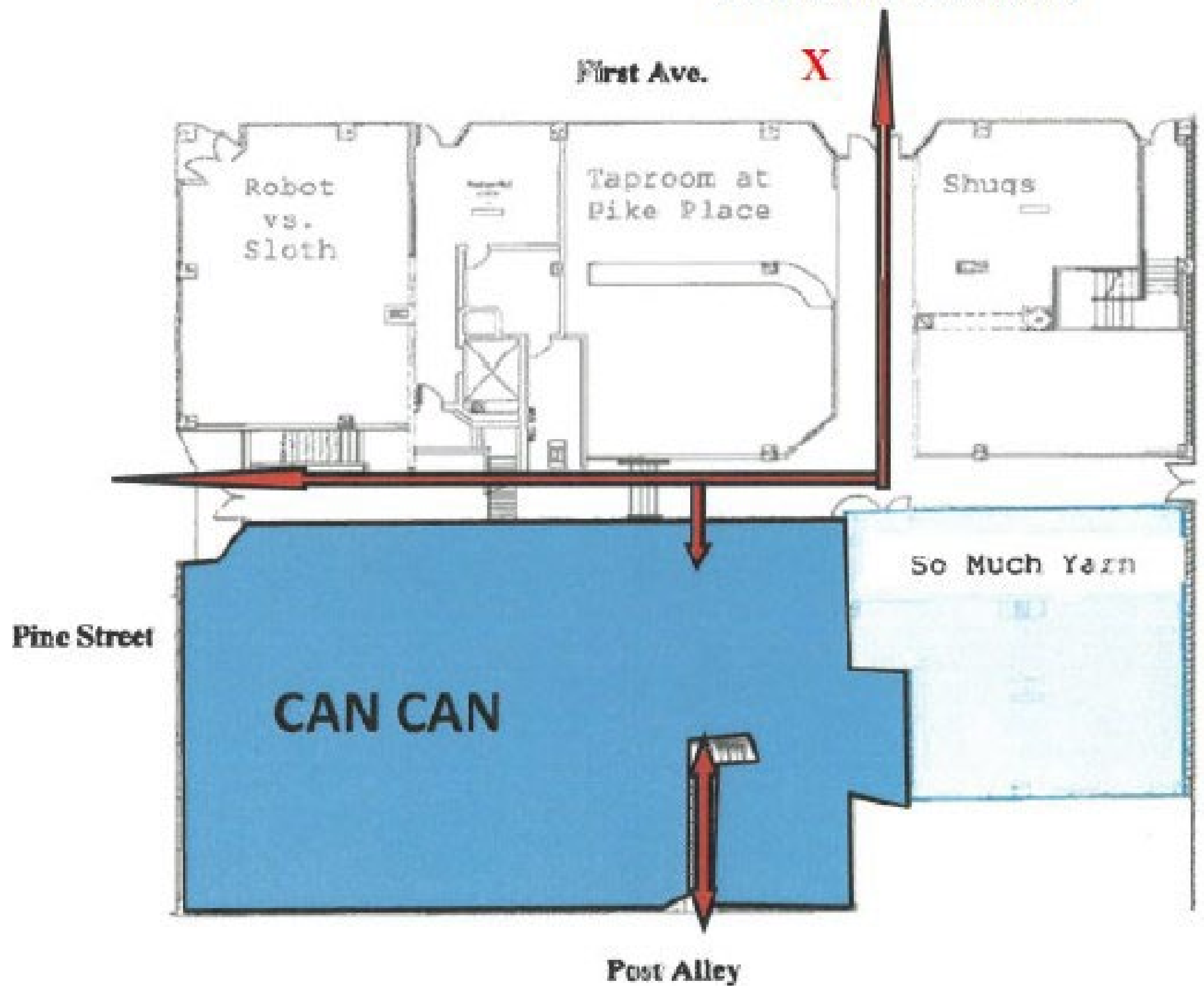


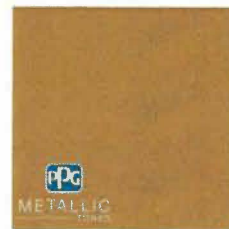
**A-board location**





#### Design for beignet window

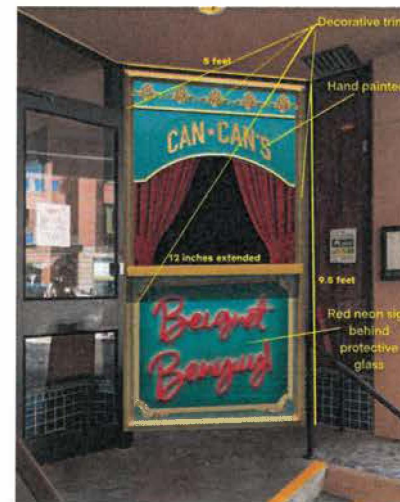
- Remove and replace existing 5'1" x 8' window with a 5'1" x 8' ticket booth / beignet window, flush with the wall
- Wood cover existing tile
- Add commercial grade, sliding/locking pick-up window, framed in with pressure treated 2 x 4 boards wrapped with treated exterior grade wood and finished with Gold metallic and Aqua fiesta paint matching "Post Alley" sign.
- Hand painted informative sign
- Neon sign inset with protective glass
- Frame in a 53 1/2" with a 43 1/2 tempered glass, service window. Frame and decorative trim protrude approximately 1" from wall
- Add a gold painted (see below) and weather proofed wooden counter top 12" deep x 58" x 2" thick.



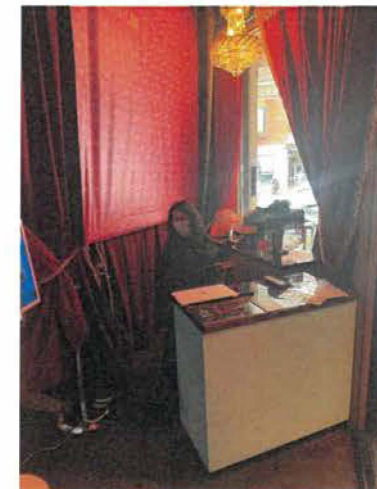
Metallic Gold: MTL  
137



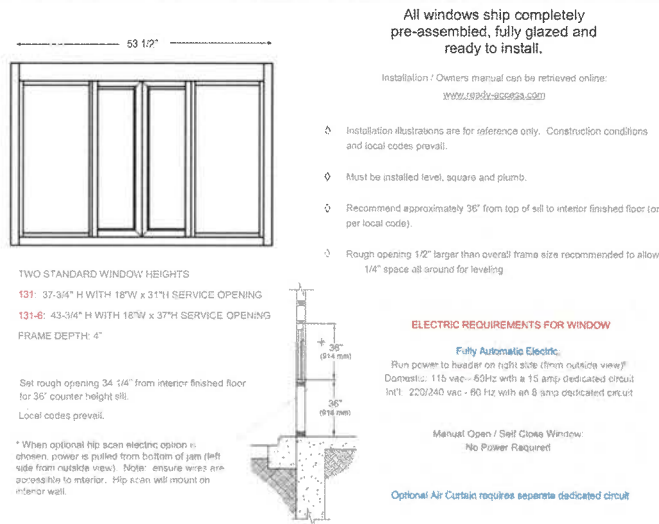
Aqua Fiesta



Exterior



Interior



## STANDARD FEATURES:

- ◊ Anodized aluminum extrusions and stainless steel combine to give you an attractive window that will not rust, pit or weather
- ◊ Fully assembled, pre-glazed and ready to install
- ◊ 1/4" Clear Tempered Glass
- ◊ Dark Bronze or Clear Anodized Aluminum
- ◊ Self latches every time it closes. Also includes a thumbturn lock, and night locking bar
- ◊ Track free bottom sill
- ◊ One year parts & labor limited warranty
- ◊ On-staff tech support / stocked parts / nationwide network of service providers

## 131 and 131-6

This attractive and economical flushmount window is ideal for a drive-thru or walk up application. Bi-parting doors slide open to the sides. It is available in two standard window heights, 37 3/4" H and 43 3/4" H.

## CHOOSE YOUR MODE OF OPERATION

### MANUAL OPEN / SELF CLOSE (131SC)

Manually open both doors with one hand. Doors part from the center and easily slide open to the sides. When released, doors close on a gravity fed track. Economical and easy to maintain.

### FULLY AUTOMATIC ELECTRIC (131E)

For hands free operation, the operator simply steps into an overhead light beam which opens the door panels automatically. The door panels automatically close when the operator steps away. With the push of a button, operators can easily adjust the width of the window opening from 18"W to 12"W.



## SIZE

**131**—Window Frame Size: 53 1/2"W x 37 3/4"H  
 Service Opening: 18"W x 31"H adjustable to 12"W x 31"H  
 Rough Opening: 54"W x 38 1/4"

**131-6**—Window Frame Size: 53 1/2"W x 43 3/4"H  
 Service Opening: 18"W x 37"H adjustable to 12"W x 37"H  
 Rough Opening: 54"W x 44 1/4"H

# GLASS DESCRIPTION

PRODUCTS

Approved Glass Fabricator Oldcastle Glass®

Glass Description FLOAT GLASS

1. USA - Annealed float glass shall comply with ASTM C1036, Type I, Class 1 (clear), Class 2 (tinted), Quality-Q3. Canada - Annealed float glass shall comply with CAN/CGSB-12.3-M, Quality-Glazing.
2. USA- Heat-strengthened float glass shall comply with ASTM C1048, Type I, Class 1 (clear), Class 2 (tinted), Quality Q3, Kind HS. Canada - Heat-strengthened float glass shall comply with CAN/CGSB-12.9-M, Type 2-Heat-Strengthened Glass, Class A-Float Glass.
3. USA - Tempered float glass shall comply with ASTM C1048, Type I, Class 1 (clear), Class 2 (tinted), Quality Q3, Kind FT. Canada - Tempered float glass shall comply with CAN/CGSB-12.1-M, Type 2-Tempered Glass, Class B-Float Glass.
4. USA - Laminated glass to comply with ASTM C1172. Canada - Laminated glass to comply with CAN/CGSB-12.1-M, Type 1-Laminated Glass, Class B-Float Glass.
5. Glass shall be annealed, heat-strengthened or tempered as required by codes, or as required to meet thermal stress and wind loads.

Monolithic Vision Glass GENERAL  
(vertical)

1. Glass heat-treated by the horizontal (roller hearth) process shall have the inherent roller wave distortion running parallel to the bottom edge of the glass as installed when specified.

MONOLITHIC VISION LITE PERFORMANCE CHARACTERISTICS

1. Monolithic Lite 1/4" Clear

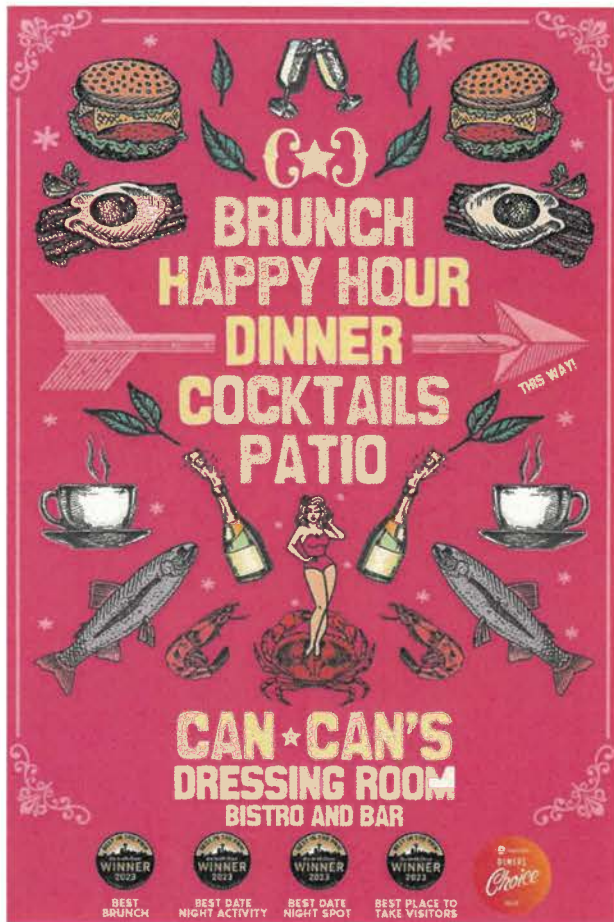
2. Performance Characteristics

| Thermal                                  |      | Optical                              |     |
|--|------|--------------------------------------|-----|
| Winter U-factor/U-Value (Btu/hr-ft²-F°): | 1.02 | Visible Light Transmittance:         | 89% |
| Summer U-factor/U-Value (Btu/hr-ft²-F°): | 0.93 | Visible Light Reflectance (outside): | 9%  |
| Solar Heat Gain Coefficient:             | 0.82 | Visible Light Reflectance (inside):  | 9%  |
| Shading Coefficient:                     | 0.94 | Total Solar Transmittance:           | 77% |
| Relative Heat Gain (Btu/hr-ft²):         | 201  | Total Solar Reflectance (outside):   | 7%  |
| Light to Solar Gain:                     | 1.09 | Ultraviolet Transmittance:           | 66% |



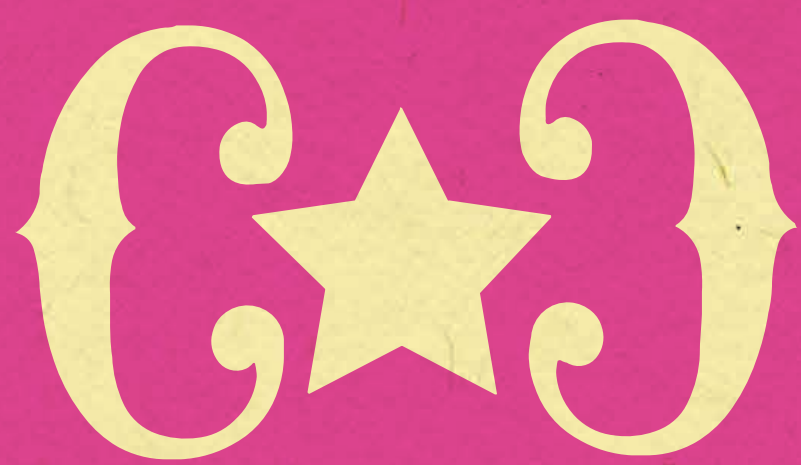


**The existing window for proposed ticket window is a single pane window with metal framing**



- Proposed A-board for hard to find location:
- 24 inches wide and 36 inches tall
  - Hand painted
  - Made of wood with galvanized steel hinges





# BRUNCH HAPPY HOUR DINNER COCKTAILS PATIO

THIS WAY!

## CAN★CAN'S DRESSING ROOM BISTRO AND BAR



BEST  
BRUNCH



BEST DATE  
NIGHT ACTIVITY



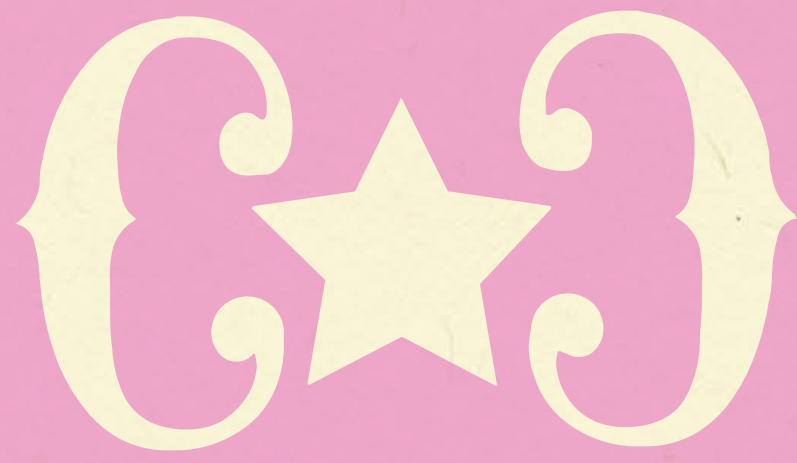
BEST DATE  
NIGHT SPOT



BEST PLACE TO  
TAKE VISITORS







BRUNCH  
HAPPY HOUR  
DINNER  
COCKTAILS  
PATIO

12"

12"

THIS WAY!

11"

2.25"

CAN★CAN'S  
DRESSING ROOM  
BISTRO AND BAR

16.5"



BEST BRUNCH



BEST DATE NIGHT ACTIVITY



BEST DATE NIGHT SPOT



BEST PLACE TO TAKE VISITORS



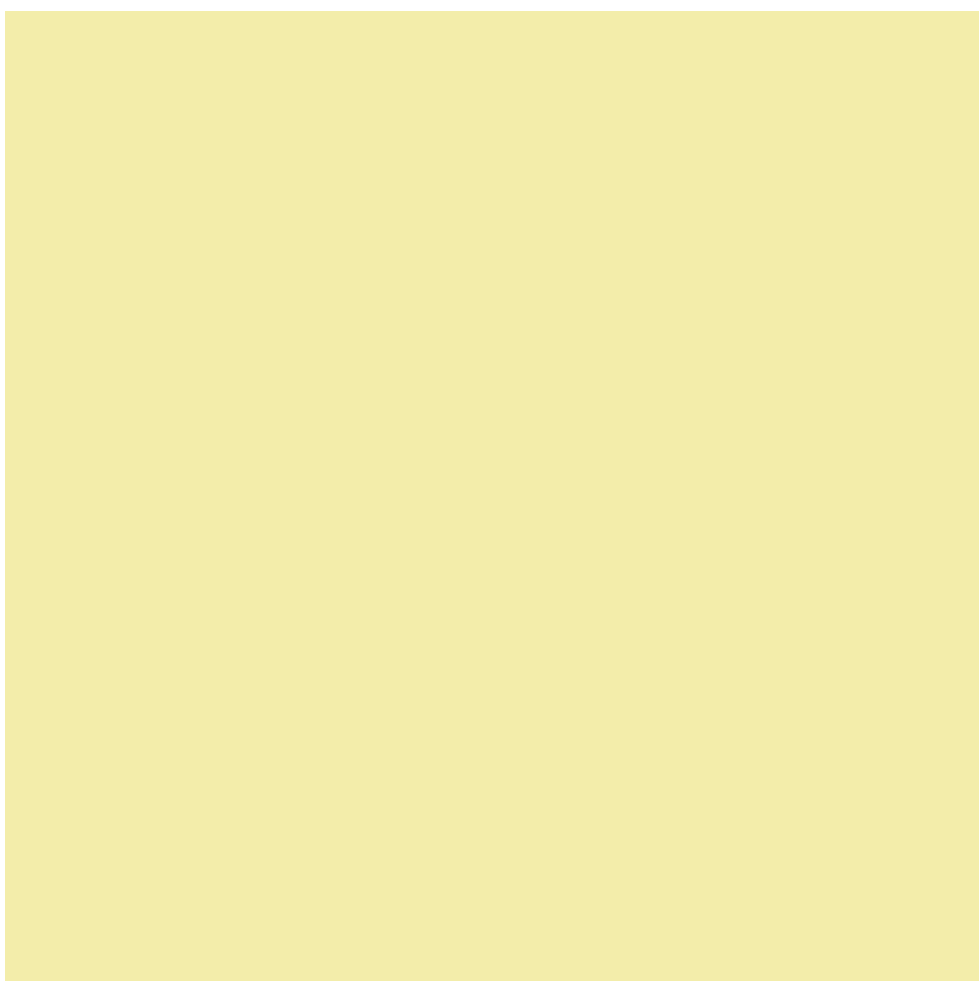




HEX E04691  
PANTONE 212 C  
#F04898



HEX ECA2B9  
PANTONE 197 C  
#E89CAE



HEX F4EEAB  
PANTONE 600 C  
#F1EB9C



HEX 312E2E  
PANTONE 276C  
#221C35

PRIMARY FONT: CAN CAN DEBOIS

**CAN CAN DEBOIS**