



BRUCE LEE MURALS

International Special Review District (ISRD)
Application for Certificate of Approval

Wing Luke Museum
of the Asian Pacific American Experience

Narrative:

We are seeking ISRD approval to install two art murals to pay tribute to Bruce Lee's Seattle roots and philosophies, for two different and connected locations, on Maynard Ave S., in the CID. One mural will be located on the New Central building, and the other on the Rex Apartments. The two murals would be on display for a two-year period, from November 2024 to December 2026.

With funding from a Hope Corps grant from the Seattle Office of Arts & Culture (ARTS), The Wing is working with local artist, Louie Gong, to create the two murals. The Artist was asked to create large scale public art in the CID that attracts people to multiple, interlinked locations; advances connections with Bruce Lee's legacy and the CID; spurs community engagement; and uplifts the specialness of the CID.

The mural locations were chosen based on community interest and support, high visibility, and proximity to locations associated with Bruce Lee's formative experiences in the CID. Both locations are at historic buildings. Murals will be full color UV print with protective coating on aluminum panels that can be safely and securely attached to the historic buildings. Each mural will be 10' x 10' in dimension with rounded corners. We have approval from the property owners to install both murals on their buildings from November 2024 (to align with Bruce Lee's birthday, November 27) to December 31, 2026.

This project is a collaboration between the Wing Luke Museum of the Asian Pacific American Experience (The Wing) and the Bruce Lee Foundation (BLF), continuing a long-standing partnership in Seattle's Chinatown-International District, creating exhibitions, public programs, neighborhood tours, and youth camps that explore Bruce Lee's life in Seattle and deepen his legacy today.

This project is funded by a Hope Corps grant from the Seattle Office of Arts & Culture (ARTS). Hope Corps Downtown Seattle Murals Project, in collaboration with the Office of Economic Development (OED), is a one-time investment as part of ARTS' Hope Corps program, to create public murals in alignment with Mayor Harrell's Downtown Activation Plan and Many Hands Art Initiative.

This one-time funding opportunity is part of ARTS' Hope Corps program, one of ARTS' pandemic recovery strategies, which connects under- and unemployed workers in the creative industries with career opportunities that benefit the public. This mural project is also part of The Wing's Arts + Culture as Apothecary (ACA) vision, defined as a culturally rooted art and creative expression contributing to comprehensive wellness, from individual to community. We are aiming to install the two murals by November 27, 2024 (Bruce Lee's birthday). We plan to host a nearby celebration when the murals are installed, with the community and the Artist.

NARRATIVE

PROJECT GOALS

Our goals for this project are to create large-scale public art in the CID that:

- Attracts people to two interlinked neighborhood locations, spurring progressive movement from site to site
- Advances connections with Bruce Lee's legacy and the CID, with a focus on intercultural connections held by both
- Spurs community engagement through the process of creating the artwork and interactivity with it once installed
- Uplifts the specialness of the CID and contributes to its health and wellbeing

Scope of Project

Two 10' x 10' murals, one each installed at:

Rex Apartments, southeast corner of Maynard Avenue South & South King Street, facing Maynard Avenue South.

New Central Building, southeast corner of Maynard Avenue South & South Weller Street, facing Maynard Avenue South.

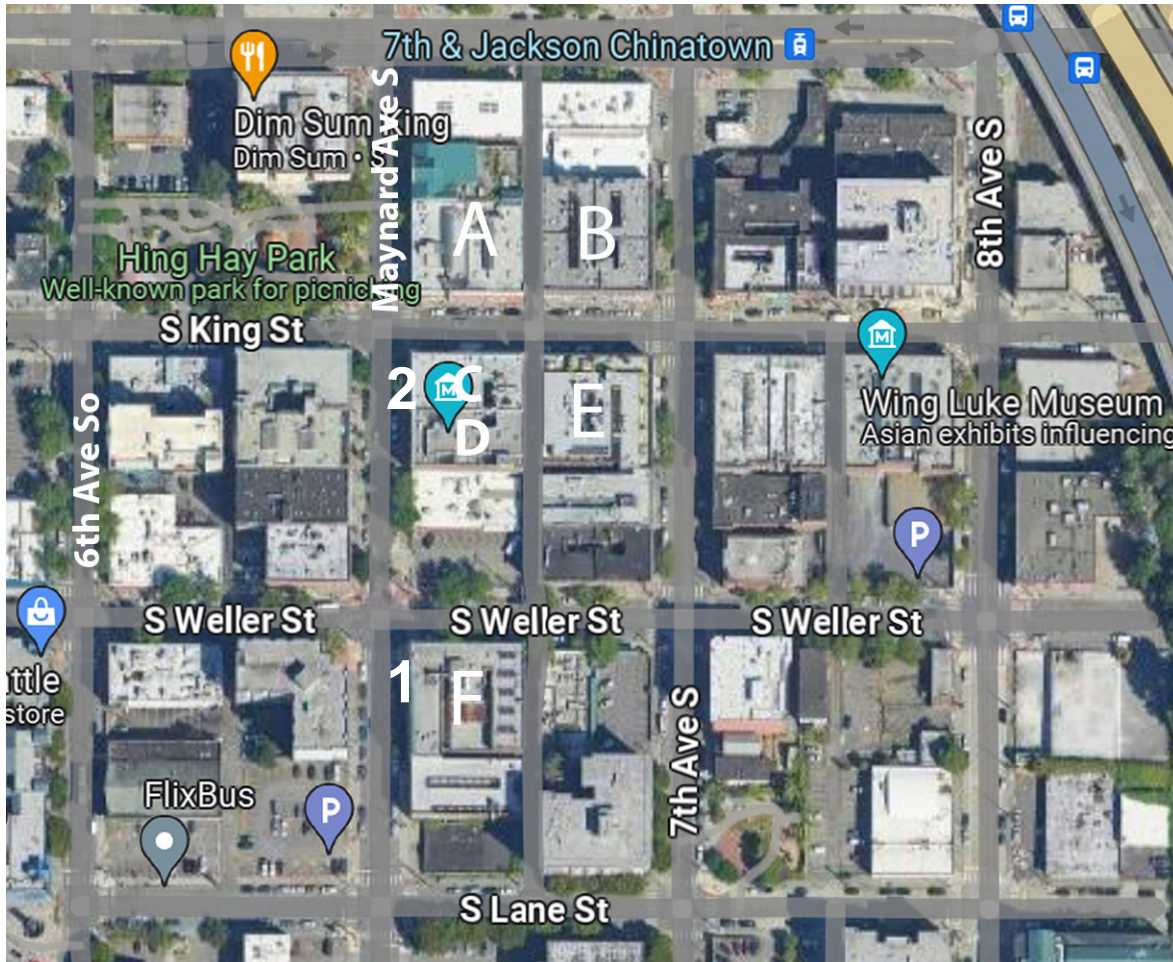
Community Engagement

The Artist provided opportunities for the public to inspire the two murals with a community engagement activity at The Wing's JamFest, CID summer arts and wellness festival, July 26, 2024.

Proposed Design:

The proposed design includes the installation of two art murals, one each at The Rex Apartments, southeast corner of Maynard Avenue South & South King Street, facing Maynard Avenue South, and The New Central Building, southeast corner of Maynard Avenue South & South Weller Street, facing Maynard Avenue South. The murals will be full color UV print with protective coating on aluminum panels with rounded corners. The murals will be attached to the wall in the mortar joints between the bricks, with each mural raised one inch away from the wall. The Artist is working with Supergraphics to produce and install the murals. Supergraphics has extensive experience with production and installation of large format projects, specializing in experiential graphics for environments, retail, event and fleet. Supergraphics uses sustainable practices with a PVC-free, zero landfill waste and open-loop recycling workflows.

CONTEXT AND SITE PLAN



KEY

- A** Atlas Apartments
 - B** Milwaukee Apartments
 - C** Rex Apartments
 - D** Eastern Hotel
 - E** Louisa Apartments
 - F** New Central Building
-
- 1** “The Journey Begins Here” mural
 - 2** “One With Water” mural

EXISTING SITES

New Central Building

Street view, north-facing on Maynard Ave S



EXISTING SITES

New Central Building

Street view, south-facing on Maynard Ave S



EXISTING SITES

Rex Apartments

Street view, north-facing on Maynard Ave S



EXISTING SITES

Rex Apartments

Street view, south-facing on Maynard Ave S



OWNERSHIP AND COMMUNITY SUPPORT

Project Partners

Wing Luke Museum
Bruce Lee Foundation

Building Owners

Rex Apartments (Courtney Chinn)
New Central Building (SCIDpda)

Murals Owner

Wing Luke Museum

Murals Maintenance

Wing Luke Museum

Funding

Hope Corps Grant / Seattle Office of Arts & Culture

COMMUNITY ENGAGEMENT

JamFest, Maynard Alley

On July 26, 2024, the Artist, Louie Gong, engaged the public at The Wing's JamFest, an evening of summer arts and community wellness, featuring music, performances, games and family activities. JamFest was located in the CID, in Canton Alley, Maynard Alley and 7th Avenue S, and offered live entertainment, family-friendly activities and opportunities to learn about the neighborhood's various community organizations and projects. The Artist hosted an activity in Maynard Alley, where attendees responded to prompts related to Bruce Lee's philosophies, writing their responses on paper. The Artist was inspired by conversations he had with the attendees, and their written responses. The Artist incorporated Bruce Lee's handwritten notes to represent knowledge. Bruce Lee's writings become a textural element in the background design of both murals.

This year, JamFest was part of a national project that brings awareness to the physical and mental health benefits of art, culture, and heritage. The project, titled Arts for Every Body, closely aligns with the Museum's Arts & Culture as Apothecary initiative which strives to promote community wellness through the research-informed transformative and life-enhancing power of art and culture participation.

Through the museum's public exhibits and community programs such as JamFest, we hope to provide space where people's stories make them feel seen, where the celebration of culture sparks joy and a vital sense of belonging, and where personal empowerment leads to long-term community strength and vitality.



PROJECT HISTORY AND SCHEDULE

Summer 2023 - The Wing is awarded a grant from Hope Corps: Downtown Seattle Murals Project

Fall – Winter 2023 - The Wing and Bruce Lee Foundation develop project, scope, goals, RFQ

December 9, 2023 - Bruce Lee Murals RFQ Release Date: BIPOC artists with ties to the CID and/or Seattle are especially encouraged to apply, with preference given to artists experienced with the City of Seattle permitting process, producing public murals and/or successful work on collaborative projects.

January 5, 2024 - RFQ Submission Deadline:

January, 2024 - Selection panel comprised of representatives of The Wing and the Bruce Lee Foundation reviews RFQ submissions and narrows down to several finalists.

January 31, 2024 - Notification of Artists Selected for Conceptual Design

February 29, 2024 - Selected Artists Submit Conceptual Design for Review

March 31, 2024 - Final Mural Artist Selected

April, 2024 - Staff from the Bruce Lee Foundation and The Wing provide feedback on the Artist's conceptual designs

April 30, 2024 - Artist Contracted

May – October, 2024 - Completion of mural development, community engagement, approvals

July 26, 2024 – Artist leads a Community Outreach activity at The Wing's annual CID JamFest / Alley Parties for the public to further inspire development of the two murals.

By November 27, 2024 – Murals installation complete, to time with Bruce Lee's birthday. Public celebration.

December 31, 2026 - Murals deinstalled

THE MURALS

The Journey Begins Here

New Central Building, Mural dimensions 10' x 10'

This unique mural concept pays tribute to Bruce Lee's Seattle roots and his philosophies on personal development. Featuring Bruce Lee's iconic hair as a portal akin to the gates of the International District, the mural depicts the starting point for a journey toward self-knowledge. A map of the International District - merged with a Chinese lattice pattern - adds visual interest and explicitly connects Bruce Lee's journey to place.

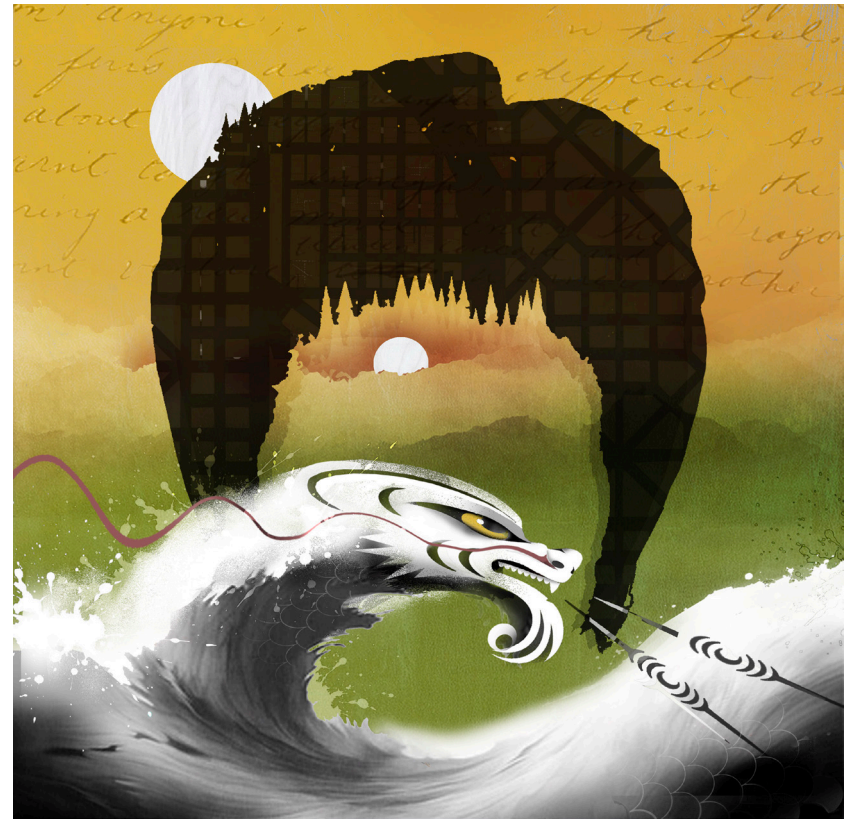
In the foreground, a Coast Salish dragon - imbued into water - acts as a spiritual mentor, promising viewers personal growth if they're willing to begin the journey **HERE**, just as Bruce Lee did 60 + years ago. The dragon's voice, which is cleverly represented with iconic coast Salish design elements, echoes the call to action made by the kitten in Return of the Dragon (my personal favorite on-screen moment).

The "pearl of wisdom" is represented throughout the design, increasing in size as the journey progresses. Can you find them all? Mount Rainier and the adjacent range symbolize the trials that lie between you and the personal growth and knowledge offered by the dragon.

The unique merger of Bruce Lee iconography and coast Salish art, which will be unique in the world. Viewers will be engaged by the accessible symbolism - "Easter Eggs" that reward inquisitively. Parents, tour guides and facilitators will find many "teachable moments" while standing in front of the mural, offering opportunities to launch into detailed discussion of the topics evoked by the mural.

Additional notes on "The Journey Begins Here"

- The text, taken from Bruce Lee's own notes, symbolizes knowledge. It's mostly illegible to avoid word by word scrutiny.
- The yellow connects with Bruce Lee: his vibrant personality, his iconic jumpsuit. Yellow and red are iconic Chinese colors, and colors Bruce used for his school.
- The green, chosen to compliment the brick background, symbolizes nature and a natural state of being.
- Note the wood grain from the panel showing through.
- The pattern inside the hair includes a map of the ID, as suggested in the feedback notes after the last review. The map is merged with a Chinese lattice pattern.
- Everyone can take a selfie with the silhouette of Bruce Lee's iconic hair!



People will be attracted to the two murals for the following reasons:

- The two murals will be visually striking and stand out from other art in the CID.
- The merger of Bruce Lee iconography and coast Salish art will be unique in the world.
- Viewers will be engaged by the accessible symbolism - "Easter Eggs" that reward inquisitively.
- Parents, tour guides and facilitators will find many "teachable moments" while standing in front of the mural, allowing them to launch into detailed discussion of the topics that the mural evokes.

THE MURALS

One With Water

Rex Apartments. Mural dimensions 10' x 10'

"One with Water" imagines the dragon – complex and fluid- as the outcome life-long journey the beginning of which was depicted in "The Journey Begins Here."

Unlike conventional dragon depictions, this artwork merges Asian and Coast Salish design - as well as my own contemporary flair (local flora and local business references). Defying categorization yet often referred to as looking "natural", I think my expression of cultural fluidity in art will embody what Bruce Lee called Natural Unnaturalness as well as other tenets.

Central to the mural is a mighty dragon delicately leaning down to sip water, symbolizing a completed journey and rest. Its mane is an intricate collage representing a lifetime of integrated experiences – including nostalgic nods to iconic businesses like Tai Tung - and floral representing the positive outcomes of battles whether won or lost. The dragon's overt confidence stems from lived experience - the knowledge that it has overcome past battles and errors and the knowledge that it can do so again.

Ultimately the dragon is one with water and nature. This is represented visually by the use of woodgrain as water, tree line and parts of the dragon's body structure.

Additional Notes on One with Water

- The text, taken from Bruce Lee's own notes, symbolizes knowledge. It's mostly illegible.
 - The dragon mane is the same size and general shape as Bruce Lee's hair.
 - The salmon berry and sword fern represent the local land and nature.
 - The dragon is sipping from the wood grain, which also makes up his body.
- There's a word on its tongue. I was thinking this word could be legible and say "like water", making it the most literal part of this artwork:)
- The circular patterns of the wood grain subtly call out water.



Note about process and final artwork

The Artist will create two paintings on wood panel based on the two mural designs. The Artist will use a combination of dyes, acrylic ink, spray paint and watercolor for his final paintings. These works may vary from the submitted mural designs. The paintings will then be photographed and printed on the aluminum panels for installation.

MURAL SITE

New Central Building,
Maynard Ave S



MURAL SITE

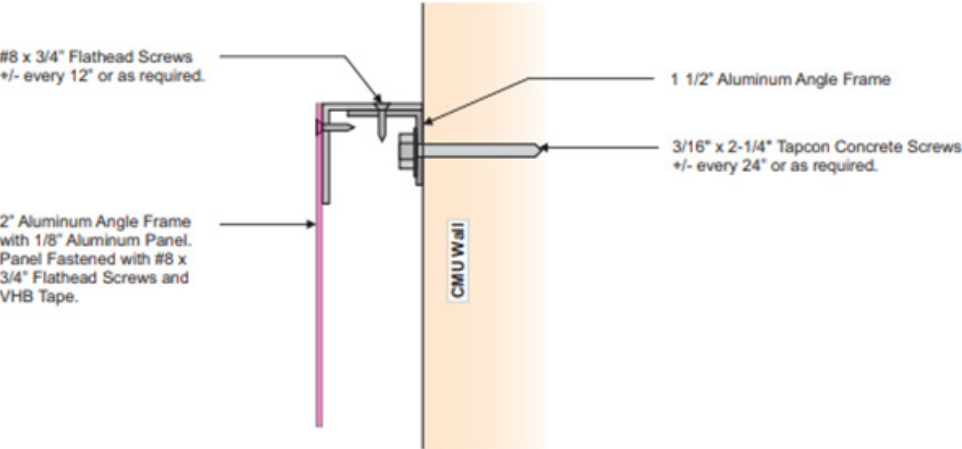
Rex Apartments,
Maynard Ave S



MURAL ATTACHMENT DETAILS

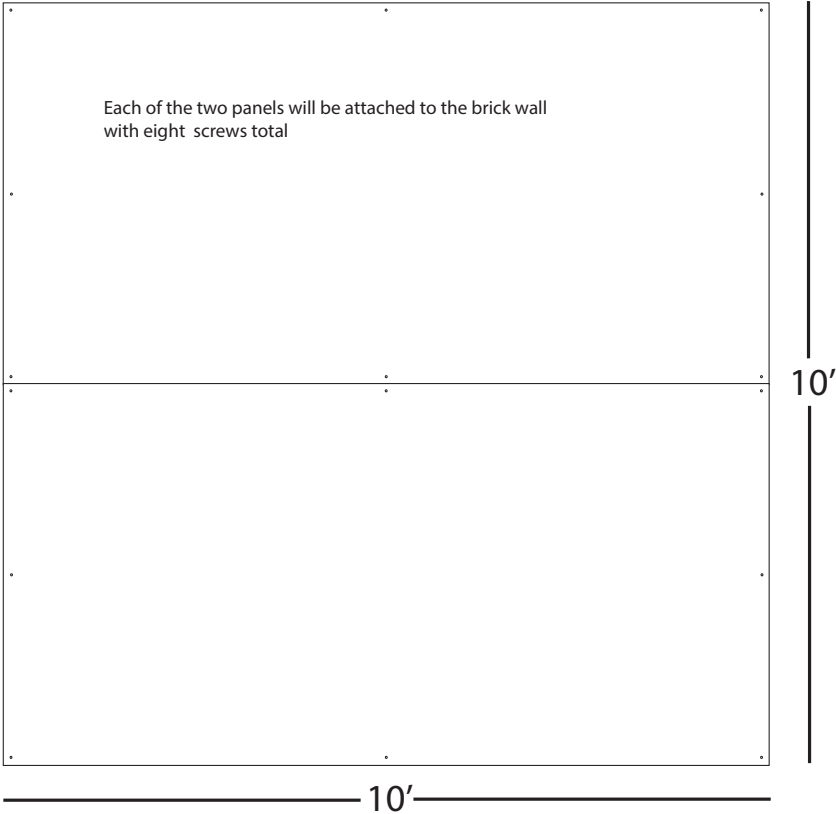
The Artist is working with local company Supergraphics. The murals will be full color UV print with protective coating on aluminum panels with rounded corners. The murals will be attached to the wall in the mortar joints between the bricks, with each mural raised one inch away from the wall.

Supergraphics will provide safe, secure attachments. The murals will be attached to the wall in the mortar joints between the bricks, with each mural raised one inch away from the wall.



Panel Attachment (CMU Block)
NTS

Attachment diagram



Proposed dimensions and placement New Central Building
10' x 10' on Maynard Ave S side, south of S. Weller



"The Journey Begins Here," New Central Hotel, 657 S Weller

14'8"

5'

Mural is 10'x 10'

S King St

Maynard Ave S

North

MATERIALS SAMPLES

Aluminum mural samples, fabricated by Supergraphics, with art by Louie Gong



The Journey Begins Here

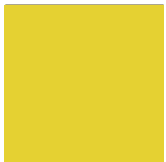
Color samples



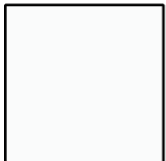
Pantone P 50 - 6 U



Pantone P 177 -13U



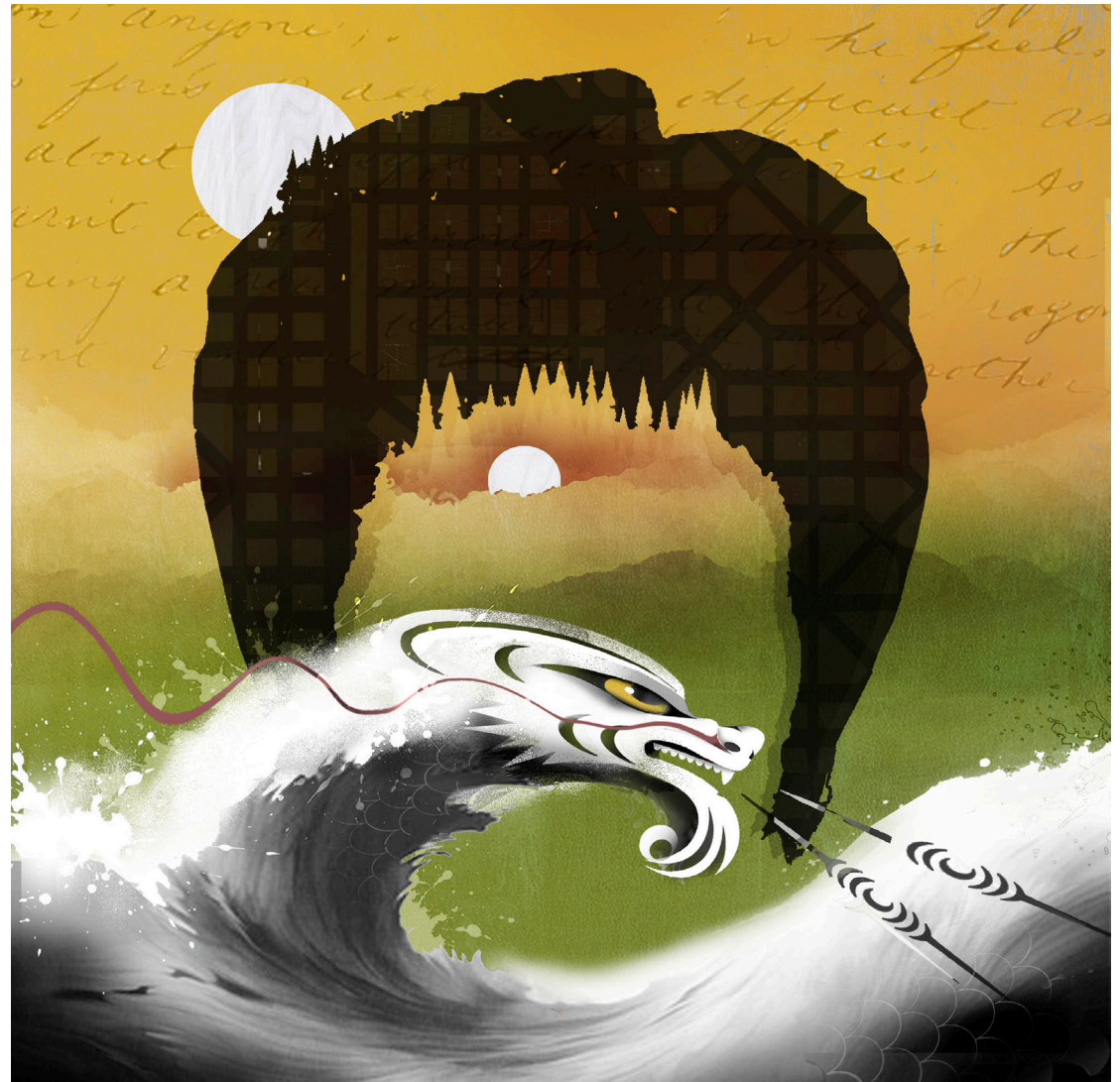
Pantone P 14 - 15 C



Pantone 179 - 1 U



Pantone P 132 -4 U



One with Water

Color samples



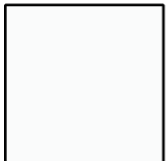
Pantone P 50 - 6 U



Pantone P 177 - 13 U



Pantone P 16 - 12 U



Pantone 179 - 1 U



Pantone P Process Black U



PRECEDENTS

Artworks in Chinatown International District

Maynard Alley murals



PRECEDENTS

Artworks in Chinatown International District

Nihonmachi Alley

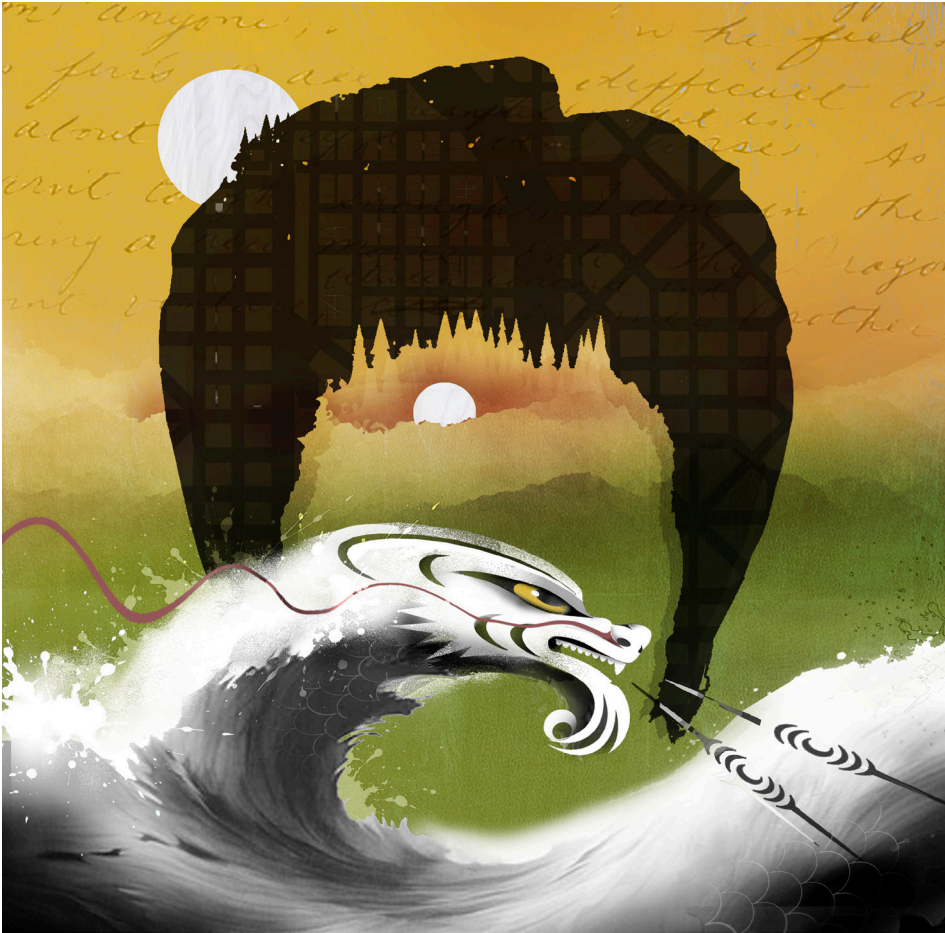


PRECEDENTS

Artworks in Chinatown International District

Canton Alley





Our goals for this project are to create large-scale public art in the CID that:

- Attracts people to two interlinked neighborhood locations, spurring progressive movement from site to site
- Advances connections with Bruce Lee's legacy and the CID, with a focus on inter-cultural connections held by both
- Spurs community engagement through the process of creating the artwork and interactivity with it once installed
- Uplifts the specialness of the CID and contributes to its health and wellbeing