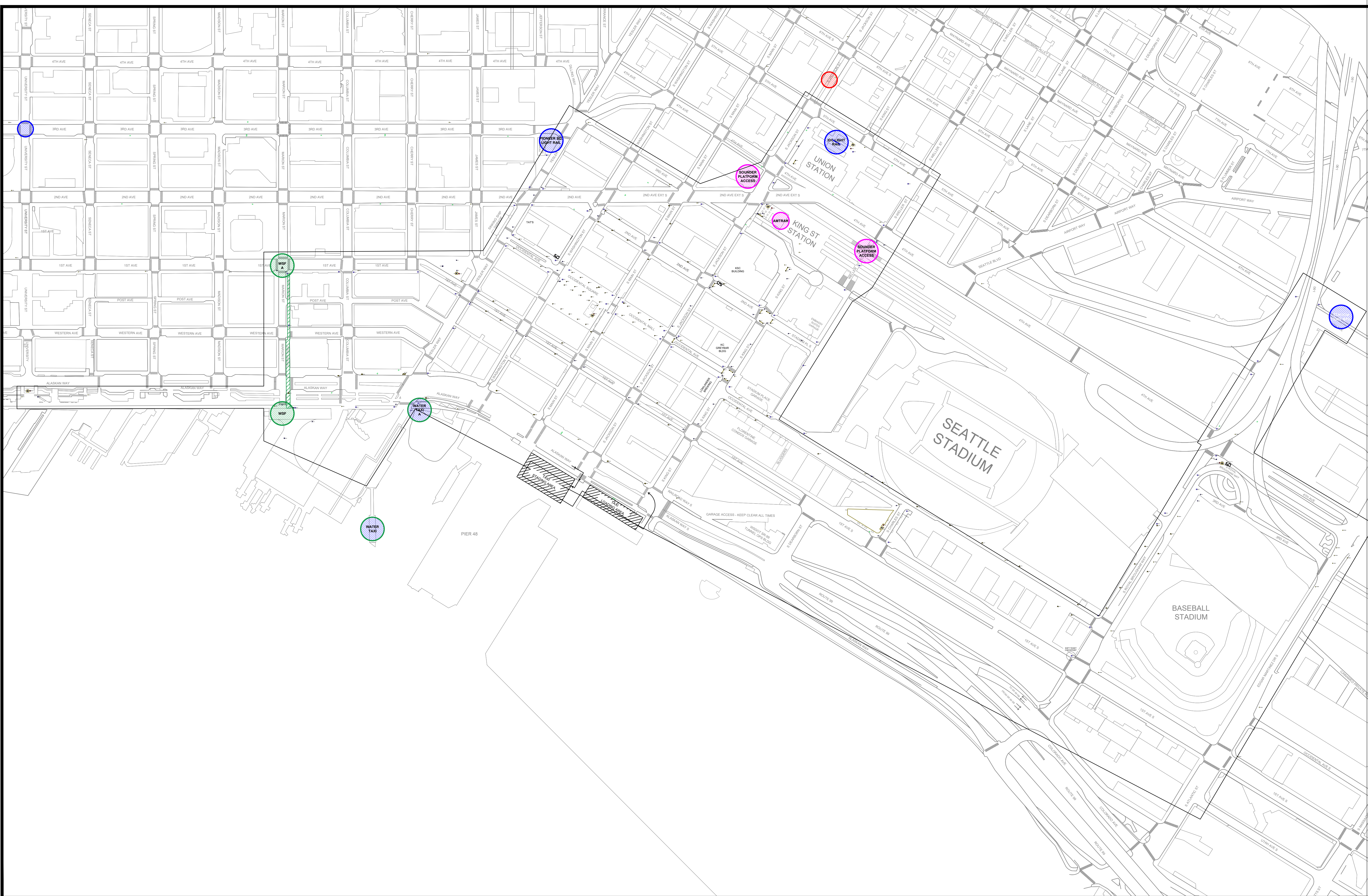


**FWC26
EVENT SIGNAGE
LAST MILE**

04-02-2026



NOTES:
 1. SHOW INFORMATION ON THIS DRAWING IS PRELIMINARY, SUBJECT TO CHANGE.

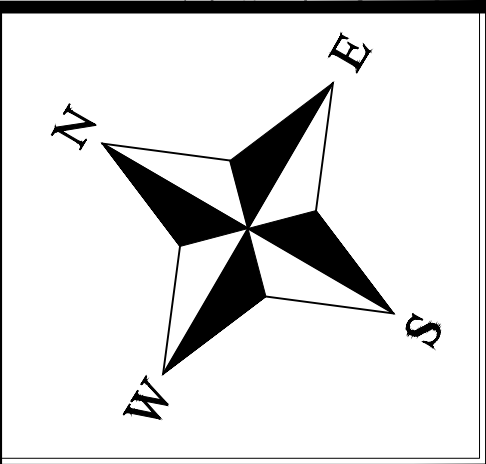
SIGNAGE SYMBOL OWNER/PURPOSE COLOR-CODE	
◆ C&C BRANDING	◆ SEAMLESS SEATTLE
◆ C&C WAYFINDING	

SIGNAGE SYMBOLS			
— BC-##	BARRICADE COVER	— GD-##	GROUND DECAL
▶ PF-##	POLE FLAG	▲ LP-##	LAMP POST
--- FS-##	FENCING SCRIM	■ QF-##	QUEUING FLAG
+ FA-##	FIRST AID	⊠ SF-##	SAFETY POD
X A-##	INFO/SAFETY AMBASSADOR W/ DOCENT	■ TW-##	TOWER COLUMN
		● UB-##	UTILITY BOX WRAP
		◆ XX-##	MISCELLANEOUS

LEGEND	
● FERRY	● LIGHT RAIL STATION
● WATER TAXI	● HEAVY RAIL STATION

LEGEND
- - - LAST MILE PERIMETER

SYMBOLS
● BOARDING SIGN
● GET OFF SIGN
● MD SHUTTLE SIGN
■ AREA MAP



Date:	4/2/2026
Drawn by:	THINC
Size:	D Size 24x36
Scale:	NTS
Version:	REFER TO DATE

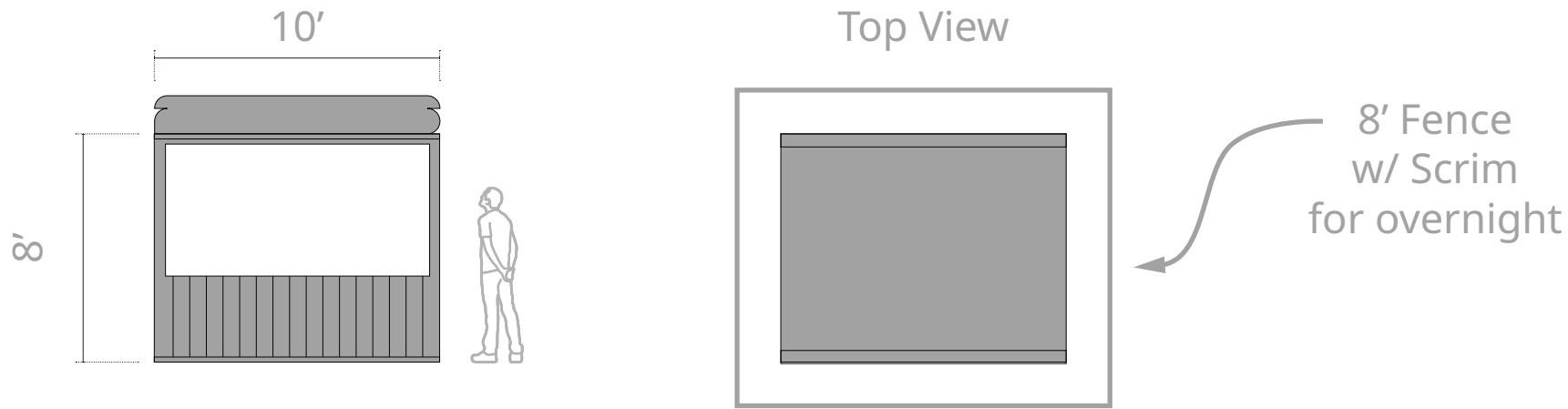
This document and the weight calculations within are based on available information at time of publication. It has not been reviewed by an engineer. Engineer review is available upon request.

SIGNAGE SYMBOLS - ON THE MAPS

SIGNAGE SYMBOLS					
	BC-##	BARRICADE COVER		GD-##	GROUND DECAL
	PF-##	POLE FLAG		LP-##	LAMP POST
	FS-##	FENCING SCRIM		QF-##	QUEUING FLAG
	FA-##	FIRST AID		SF-##	SAFETY POD
	A-##	INFO/SAFETY AMBASSADOR W/ DOCENT		TW-##	TOWER COLUMN
				UB-##	UTILITY BOX WRAP
				XX-##	MISCELLANEOUS

SAFETY PODS - SECURITY / INFO

FIFA WORLD CUP 2026

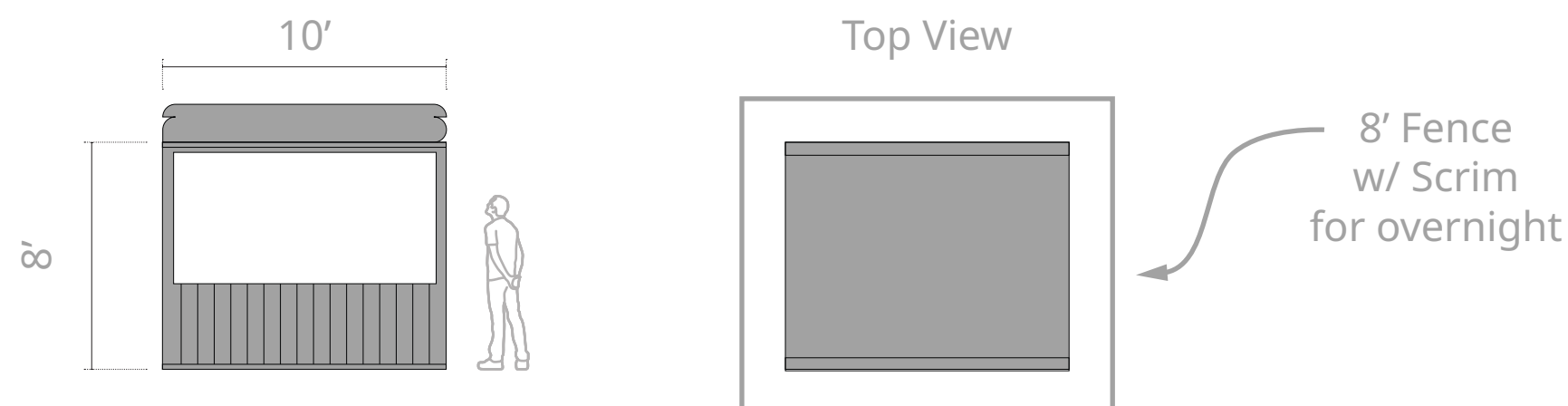


SAFETY PODS - SECURITY / INFO

- Map ID: SF-##
- 8' x 10' and the 10'x12' with Fence Scrim (8' H Fence
- Install Window: June - 8-10, 2026
- Removal Deadline: No later than 11:59pm on July 10, 2026
- Non Match Days: On non Match days when the safety pod is not staffed there will be a 8' high chain linked fence with branded fence scrim (see on the left)
- Vendor / Responsible Party: Connors and Company Events
- Next to each Safety Pod there will be a 10 x 10 First Aid tent staffed with Medics. These tents will only be up on match days.
- Notes: ADA clear zones/emergency access



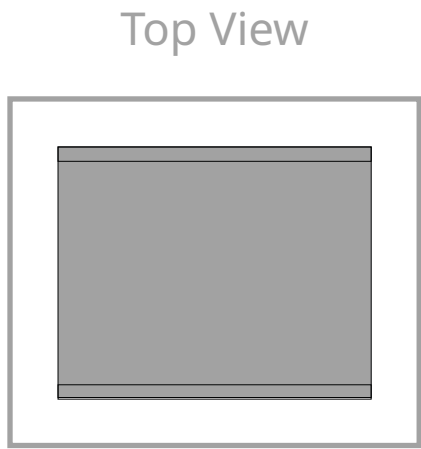
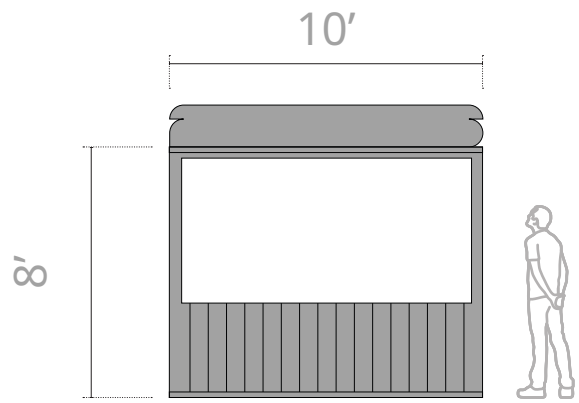
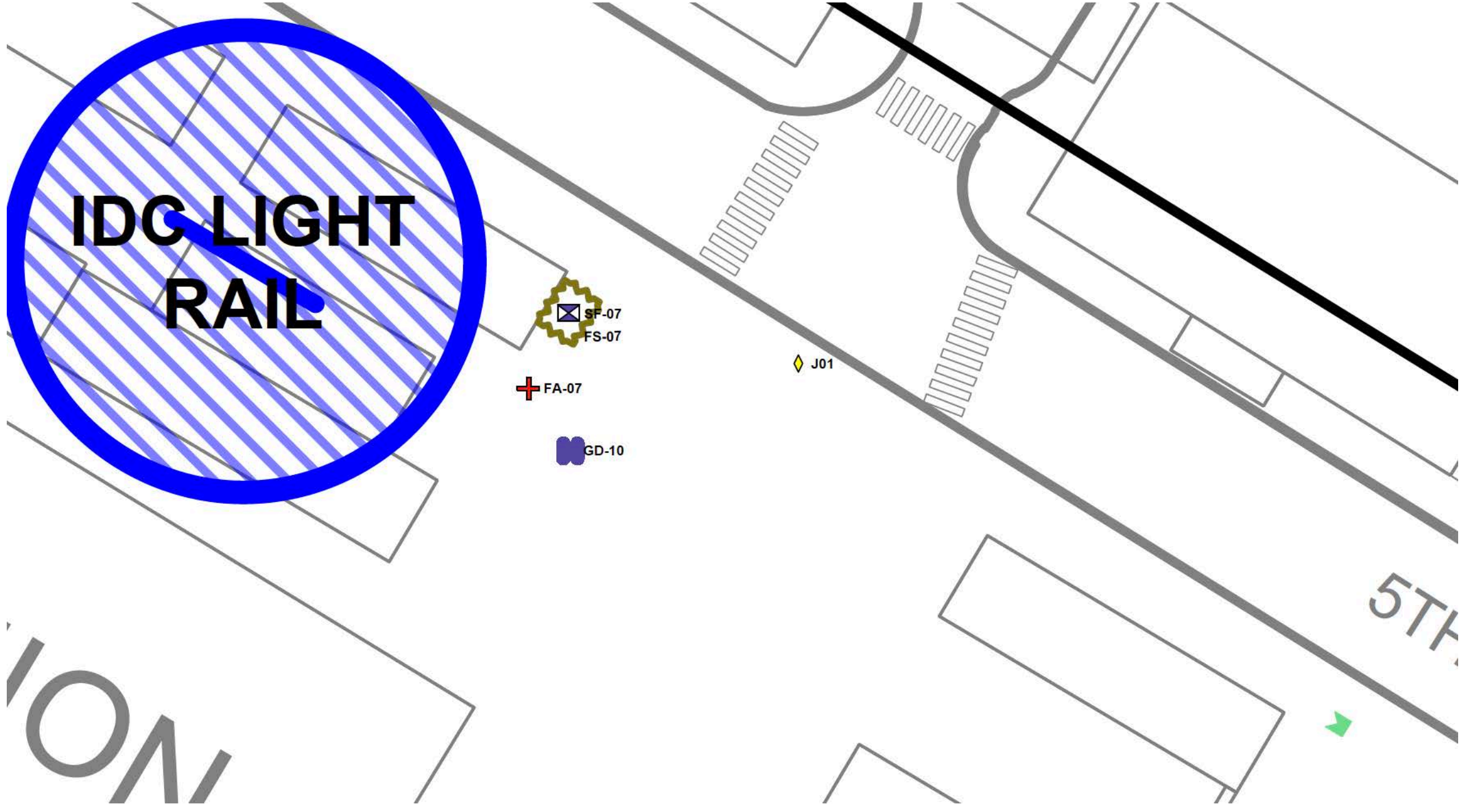
HOST CITY



SAFETY PODS - SECURITY / INFO

FIFA WORLD CUP 2026

Union Station - West Side of CID on 5th Street



8' Fence w/ Scrim for overnight

WHAT WILL BE AROUND THE SAFETY PODS WHEN NOT IN USE

HOST CITY

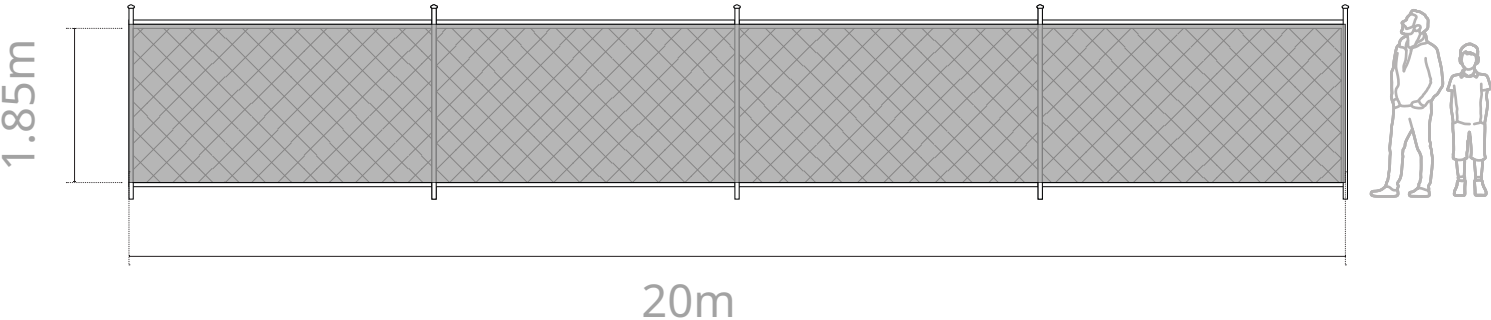
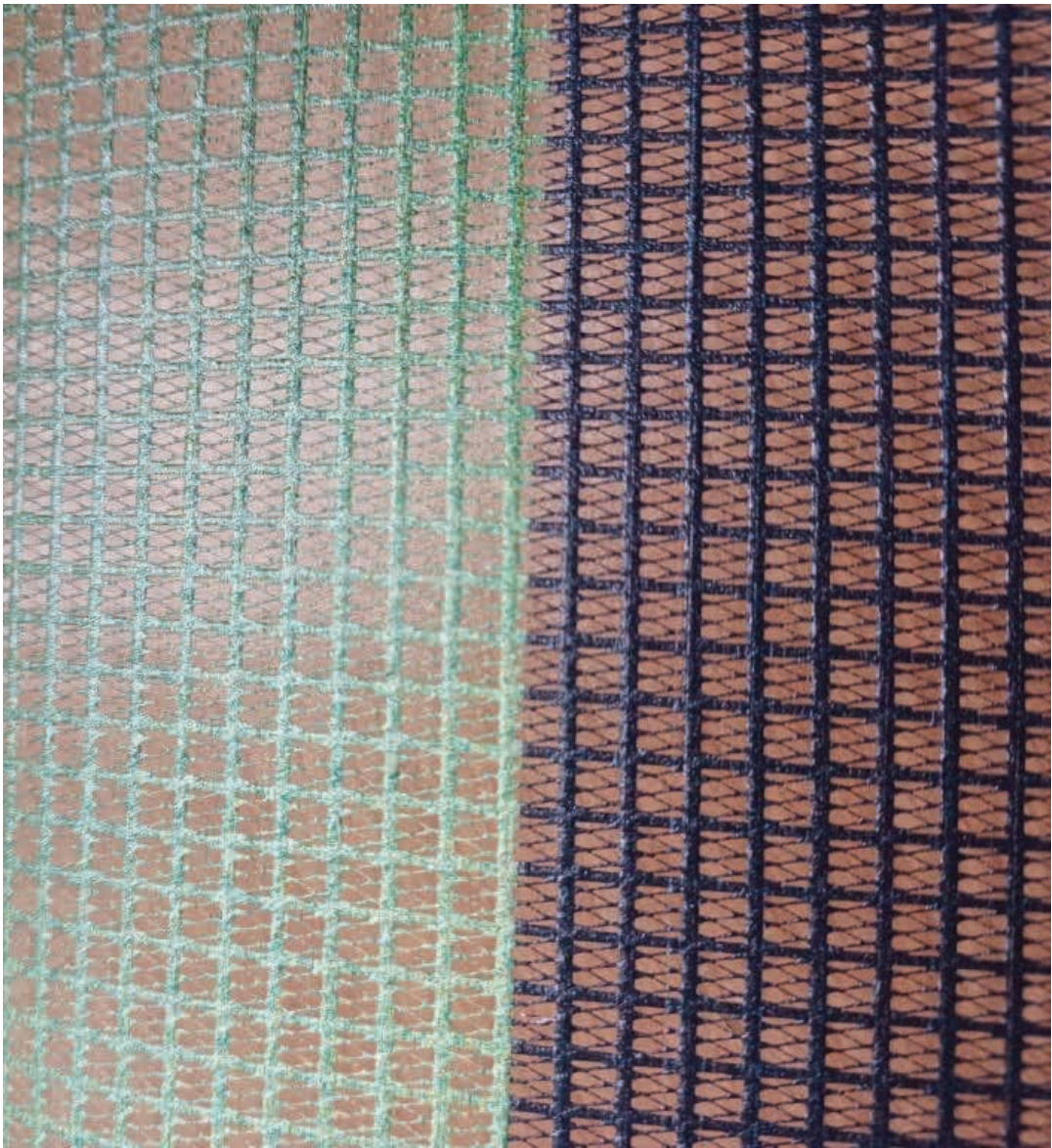


1



4

Constructed of a polyester mesh sandwiched between two layers for vinyl, scrim is lightweight and allows for air and some light to pass through. Most commonly seen applied to chain link fences, it is ideal for larger format graphics, mitigating the impact of wind while allowing moderate to good privacy.

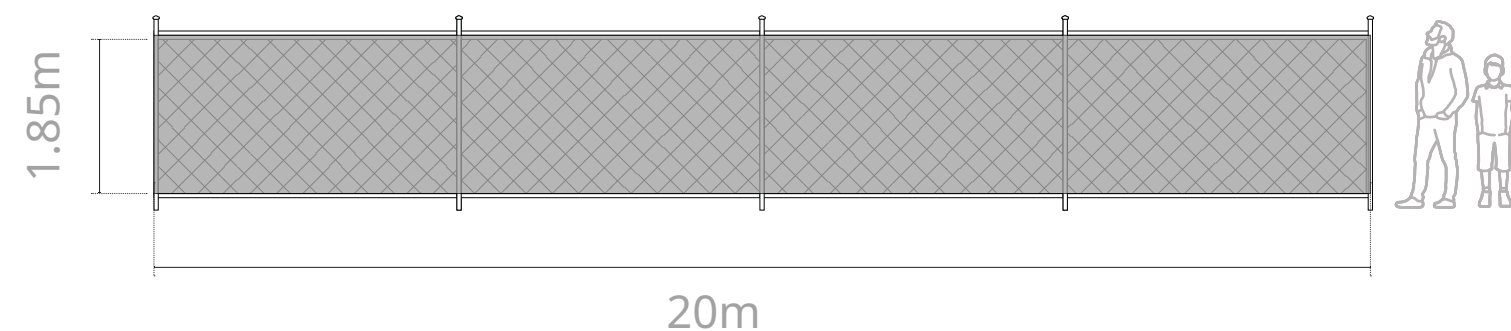


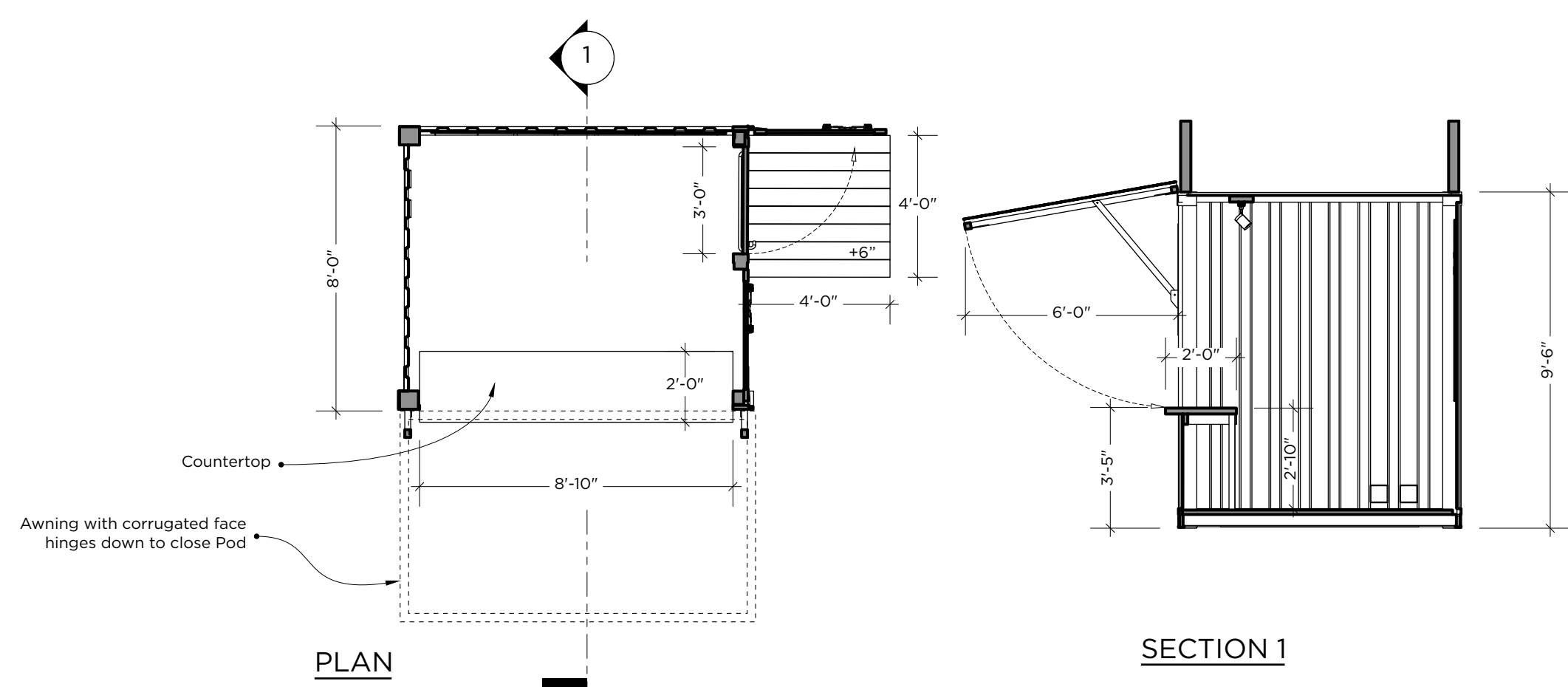
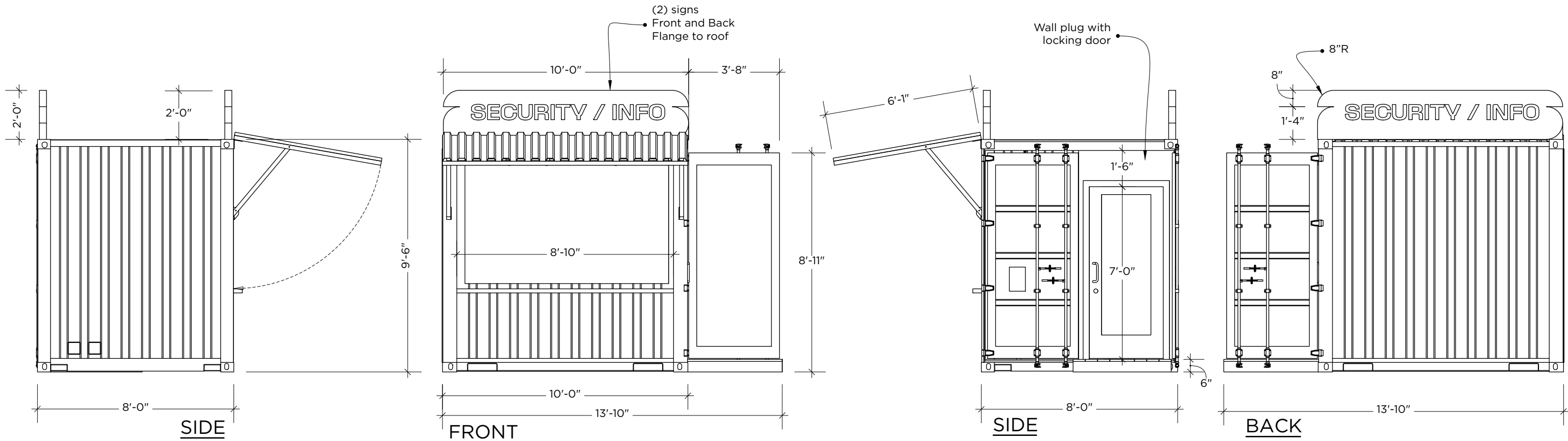
FENCE SCRIM

FIFA WORLD CUP 2026

On non Match days when the safety pod is not staffed there will be a 8' high chain linked fence with branded fence scrim around the perimeter 10' x 12'

- Map ID: FS-##
- The dimension is 10' x12' x8' H with Fence Scrim
- Install Window: June 8-10, 2026
- Removal Deadline: No later than 11:59pm on July 10, 2026
- Vendor / Responsible Party: Connors and Company Events
- Notes:70/30 wind-permeable mesh banner fabric





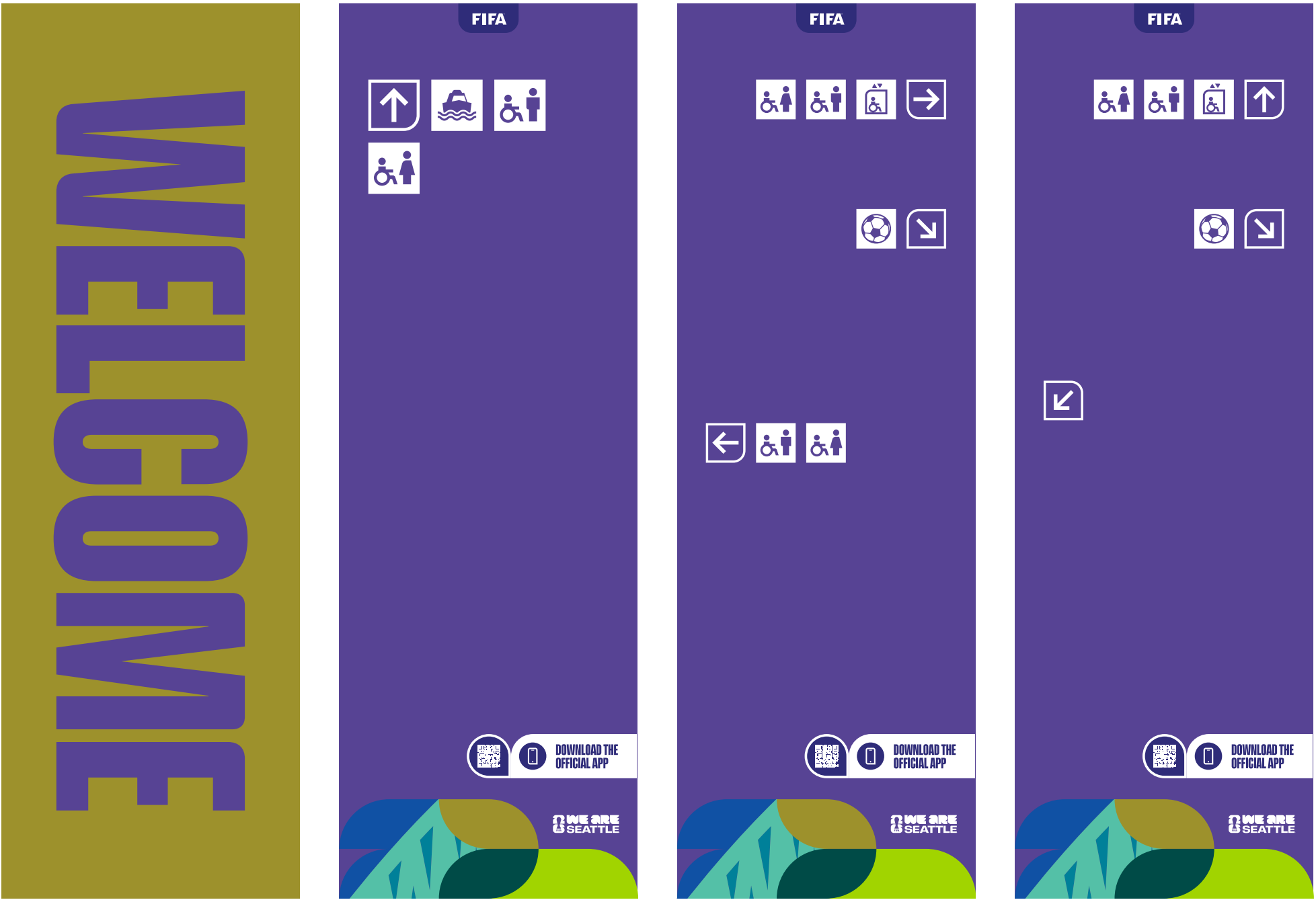
PTOI to use these plans as guidelines and design intentions for engineering and fabrication.

DISCLAIMER: This drawing package represents visual concepts only. The Client is responsible for the accuracy of this design and will not assume liability for engineering, construction, handling, or any damages or injuries as a result of use. All materials, construction and rigging must comply with governmental and exhibition Fire, Safety, Electrical, and Environmental Codes.

4' X 4' X 12' TOWER - 4 SIDED WAY FINDING TOWER

FIFA WORLD CUP 2026

- Map ID: TW-##
- Install Window: June 1, 2026
- Removal Deadline: No later than 11:59pm on July 10, 2026
- Vendor / Responsible Party: Stages Northwest
- Notes: 70/30 wind-permeable mesh banner fabric. freestanding; ballast

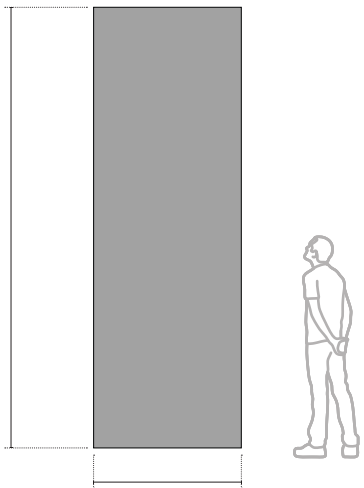


NORTH SIDE

EAST SIDE

SOUTH SIDE

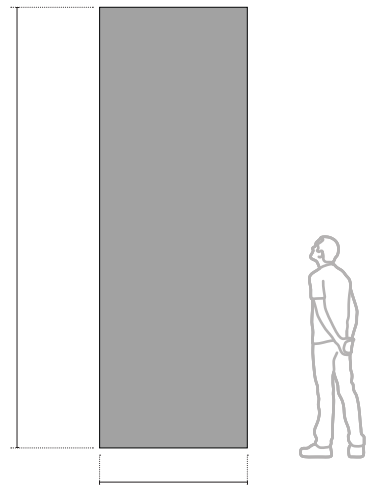
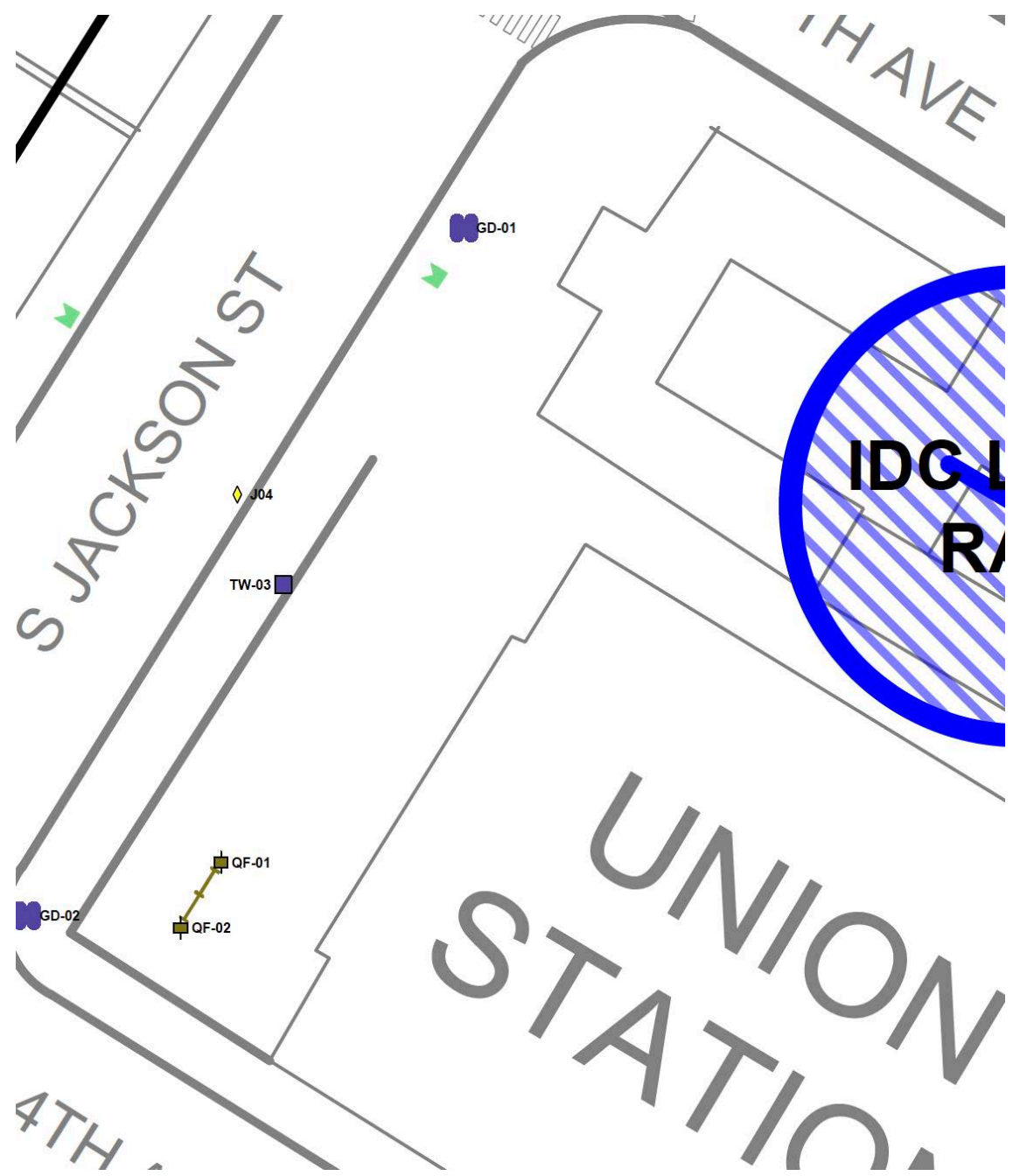
WEST SIDE



4' X 4' X 12' TOWER - UNION ST - NORTH SIDE

FIFA WORLD CUP 2026

TOWER LOCATION



FIFA

Elevators

NORTH SIDE

FIFA

Elevators
King St. Station

Seattle Stadium
Sound Transit - Stadium - South

Occidental Park

Pier 50 Water Taxi
Ferry Terminal
Pier 58 + Pier 62

EAST SIDE

FIFA

Seattle Stadium
Occidental Park
Pier 50 Water Taxi
Ferry Terminal
Pier 58 + Pier 62

SOUTH SIDE

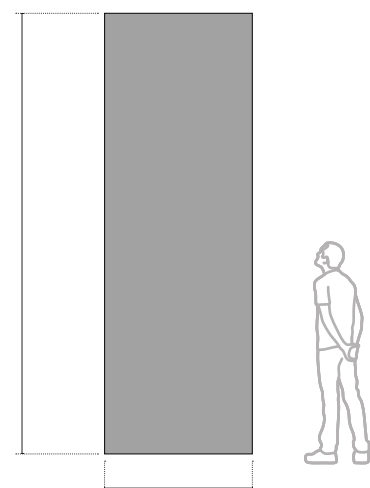
WELCOME

WEST SIDE

4' X 4' X 12' TOWER - UNION ST - NORTH SIDE

FIFA WORLD CUP 2026

TOWER LOCATION

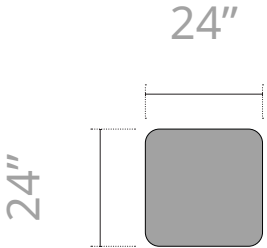


WAY FINDING



Vinyl film with pressure sensitive adhesive backing allows for graphics to be applied to contoured large shapes. A variety of adhesives allow for both short term and long term applications

- Map ID: GD-##
- Install Window: May 1-15, 2026
- Removal Deadline: No later than 11:59pm on July 10, 2026
- Vendor / Responsible Party: Arc Riot
- Notes: Approved surface type; non-slip surface, adhesive removal and cleanup



BOARDING SIGNS

Get off here for Seattle Stadium

King County METRO

SOUNDTRANSIT

LET'S SEA PLAY 26

Get off here for Seattle Stadium

King County METRO

LET'S SEA PLAY 26

Buses to Seattle Stadium

C H

1 14 17 21
24 33 40 124
131 132 Shuttle
Metro Matchday Shuttle

King County METRO

LET'S SEA PLAY 26

AREA MAPS

Waterfront Transit

Seattle Ferry Terminal, Pier 50, Waterfront Park, Occidental Square

Route	Destination	Stop
C	To West Seattle	1558 1562
	To Downtown	1561 1559
H	To West Seattle	1558 1562
	To Downtown	1561 1559
	To Bremerton	Seattle Ferry Terminal
	To Bainbridge Island	Seattle Ferry Terminal
	To West Seattle	Pier 50
	To Vashon Island	Pier 50
	To Southworth	Pier 50
	To Bremerton	Pier 50
	To Kingston	Pier 50

King County METRO

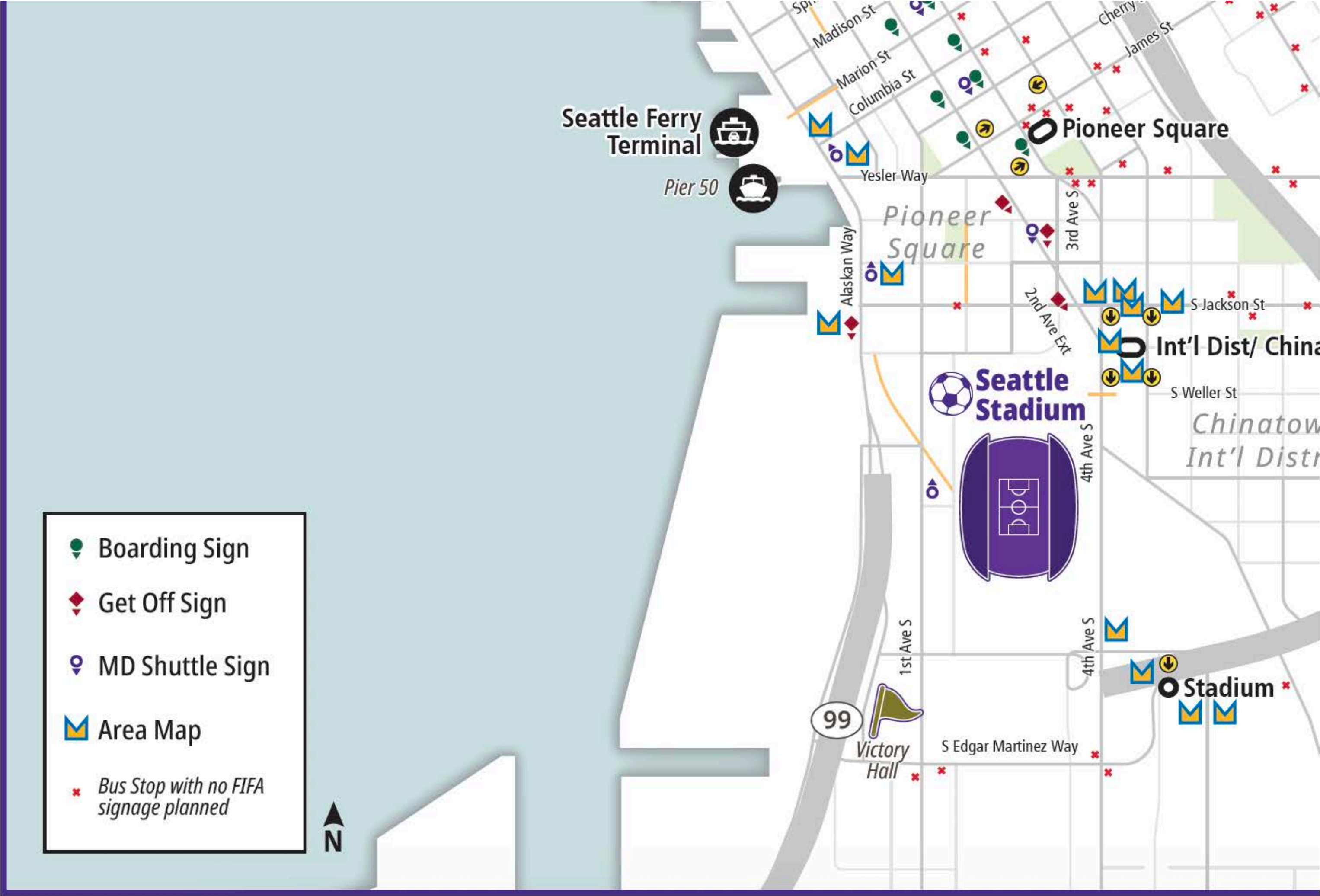
Washington State Ferries

Kitsap Transit

LET'S SEA PLAY 26

KING COUNTY METRO (KCM) - SIGN LOCATION

FIFA WORLD CUP 2026





NOTES:
 1. SHOW INFORMATION ON THIS DRAWING IS PRELIMINARY, SUBJECT TO CHANGE.

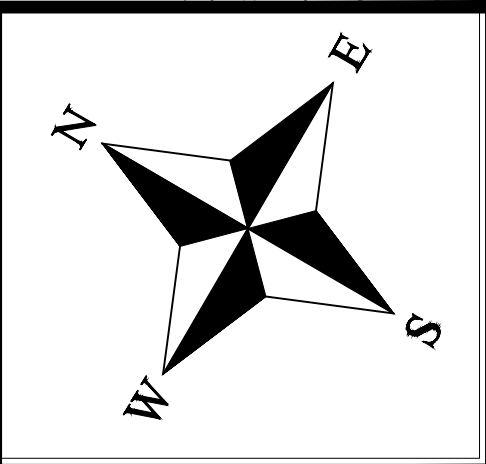
SIGNAGE SYMBOL OWNER/PURPOSE COLOR-CODE	
◆ C&C BRANDING	◆ SEAMLESS SEATTLE
◆ C&C WAYFINDING	

SIGNAGE SYMBOLS	
— BC-## BARRICADE COVER	— GD-## GROUND DECAL
▶ PF-## POLE FLAG	▲ LP-## LAMP POST
--- FS-## FENCING SCRIM	■ QF-## QUEUING FLAG
+ FA-## FIRST AID	⊠ SF-## SAFETY POD
X A-## INFO/SAFETY AMBASSADOR W/ DOCENT	■ TW-## TOWER COLUMN
	● UB-## UTILITY BOX WRAP
	◆ XX-## MISCELLANEOUS

LEGEND	
● FERRY	● LIGHT RAIL STATION
● WATER TAXI	● HEAVY RAIL STATION

LEGEND
- - - LAST MILE PERIMETER

SYMBOLS
● BOARDING SIGN
● GET OFF SIGN
● MD SHUTTLE SIGN
■ AREA MAP



Date:	4/2/2026
Drawn by:	THINC
Size:	D Size 24x36
Scale:	NTS
Version:	REFER TO DATE

This document and the weight calculations within are based on available information at time of publication. It has not been reviewed by an engineer. Engineer review is available upon request.

SEA26 - OFF-STADIUM ACTIVATIONS
LAST MILE

For more information, Please contact

SAM WARREN

Director of Special Projects
Connors & Co Events, Inc.
swarren@connorsandco.com
(720) 201-3755

VICTORIA JONES

Director of Procurement & Event Services
Connors & Co Events, Inc.
vjones@connorsandco.com
(585) 451-0014

