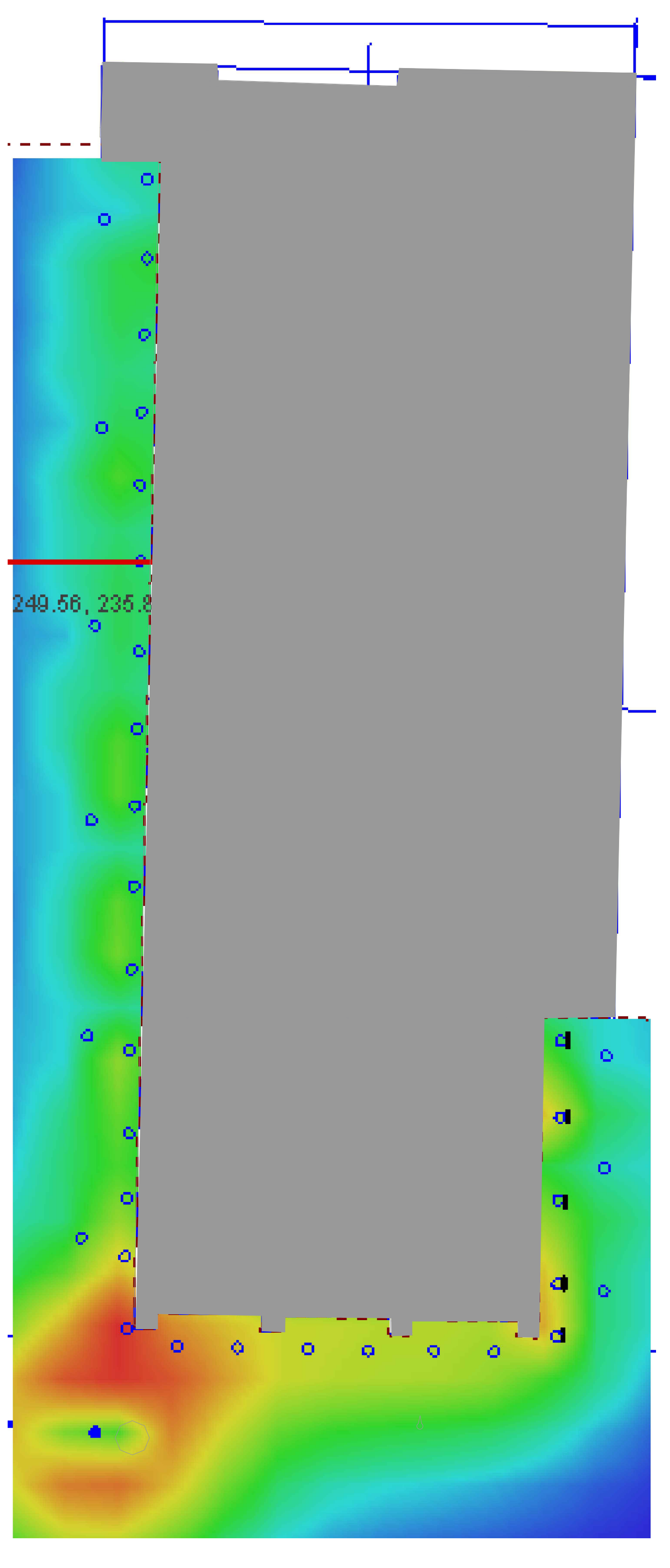
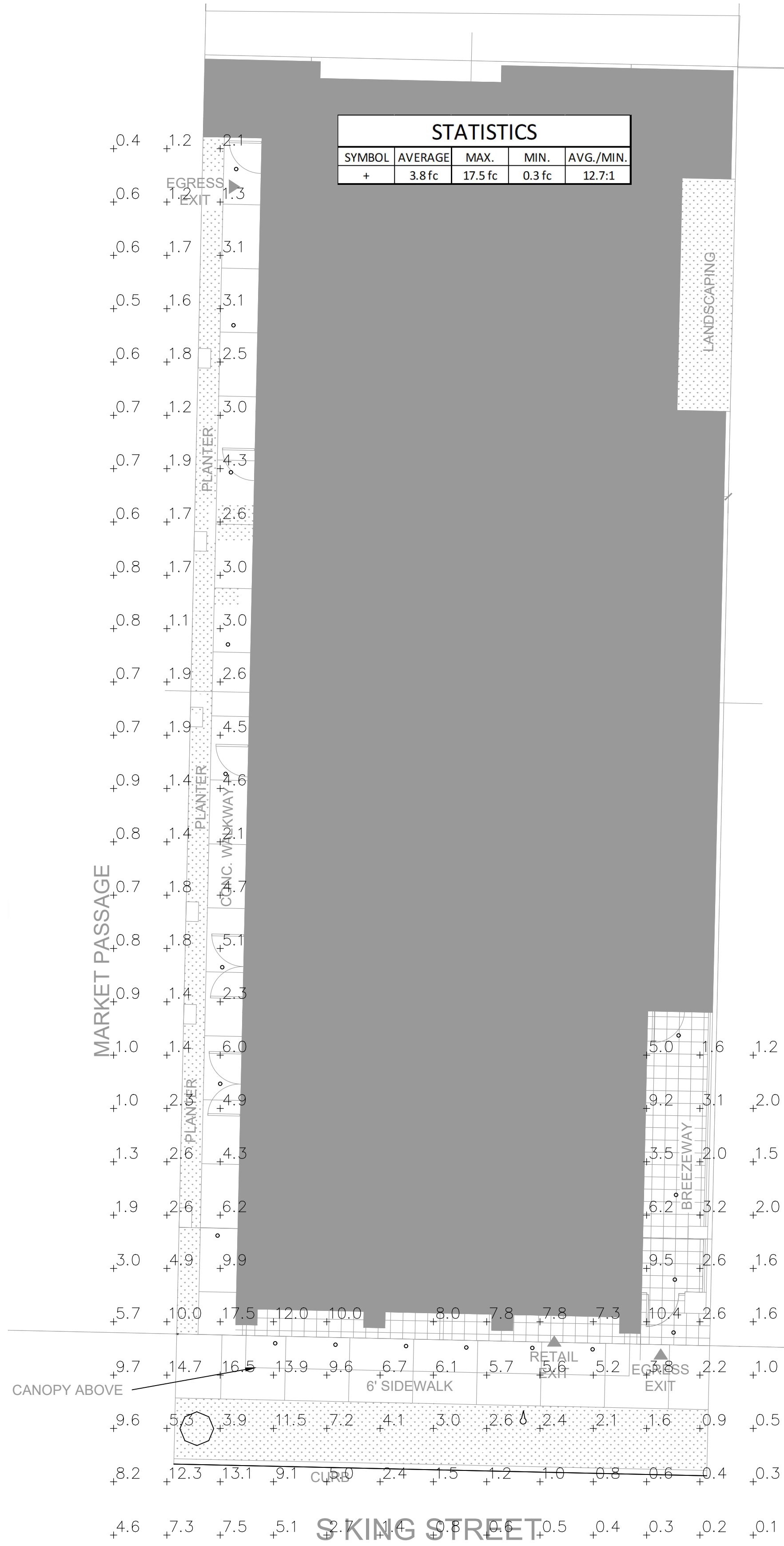


EXTERIOR LIGHTING FIXTURE SCHEDULE					
DESIGNATION	DESCRIPTION	LAMPS	MOUNTING	MANUFACTURER	VA
COMMON AREA LIGHTING FIXTURES					
A	OVERHANG DOWNLIGHT, 15 DEGREE SPOT, SURFACE MOUNT TYPE, VERIFY FINISH, CUT-OFF VISOR TOWARDS PROPERTY LINE, BLACK FINISH.	LED 300 LUMENS 3000K	SURFACE	C OUTDOOR LIGHTING CC400	39
B	8" SURFACE MOUNT DISC LIGHT, WET LISTED, EDGE-UT, BLACK FINISH.	LED 720 LUMENS 4000K	SURFACE	AFX EGRF (D5) SERIES	12
C	LIGHT FIXTURE: 5.125" DIA. x 5.125" H, P.O.D. - 5.125" DIA. x 5.125" H, CRI 70, LIGHT DISTRIBUTION: TYPE V, VOLTAGE: 120-277V, PHOTOCONTROL, RECEPTACLE, GOLD BALL FINIAL, LIGHT FIXTURE COLOR: SM RAL3000 (FLAME RED), POLE: GRAY, POLE CATALOG #: CDS5-12-AB-GRY-335-35 w/ DULIM OCT RAL3000	LED 2000 LUMENS 3500K	POLE MOUNTED- 12 HEIGHT	KING LUMINAIRE K55-S-R24-PA4F-V-40ISSJ-7030- 120-277-PR7-3.5K-BALL FINIAL (GOLD) - SM RAL3000	40
D	BOLLARD 42" x 6", BUG: 80-11-G0, WET RATE, BLACK FINISH.	LED 424 LUMENS 3000K	GROUND	HELIO BOLLARD SERIES 600 BHLO-603	40
F	SPOT AND FLOOD LIGHT, LANDSCAPE LIGHTING, MINI MR16, 12V LAMP, 9-15V AC, WET RATE, BLACK FINISH.	LED 680 LUMENS 3000K	GROUND	BIRCHLER COPPER ACCENT LIGHT	35

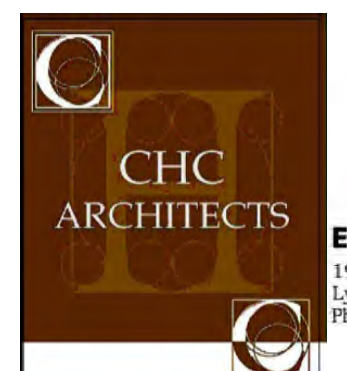


GROUND LEVEL LIGHT FIXTURE LAYOUT
SCALE: 1/8" = 1'-0"

GROUND LEVEL PHOTOMETRICS
SCALE: 1/8" = 1'-0"

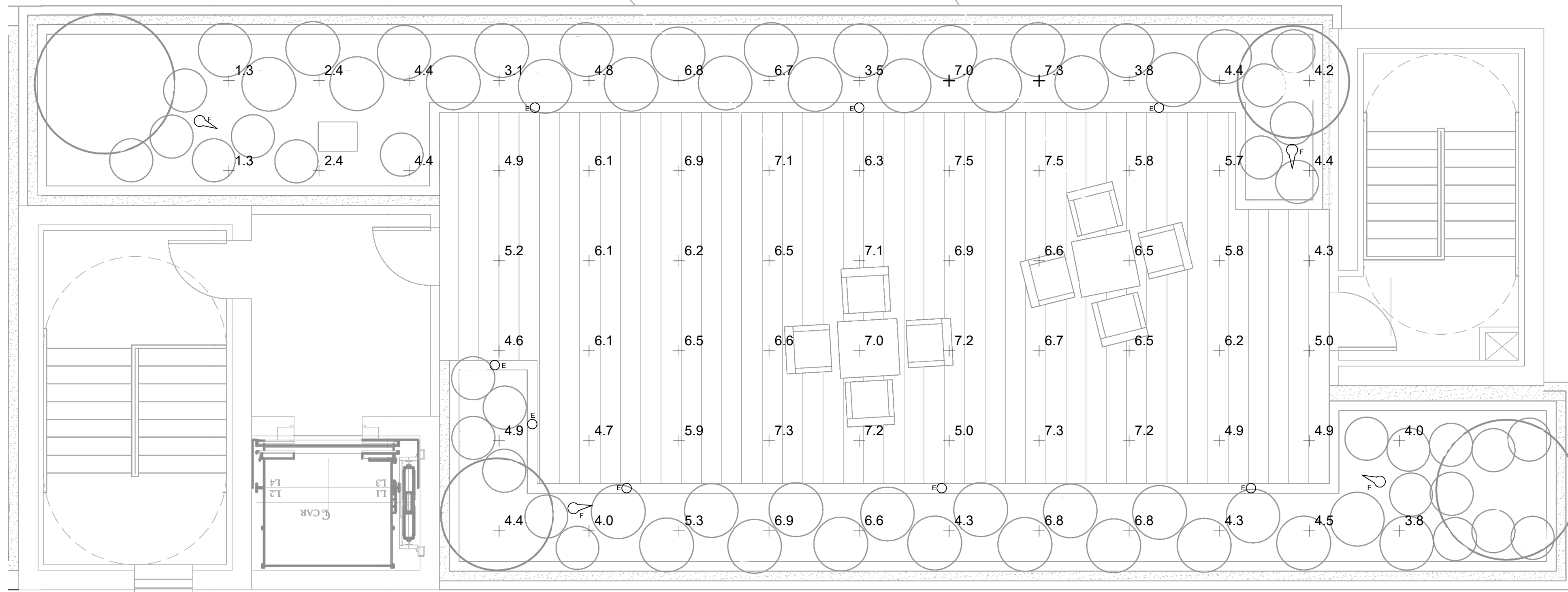
GROUND LEVEL LIGHTING HEAT MAP
SCALE: 1/8" = 1'-0"

CITY STAMP



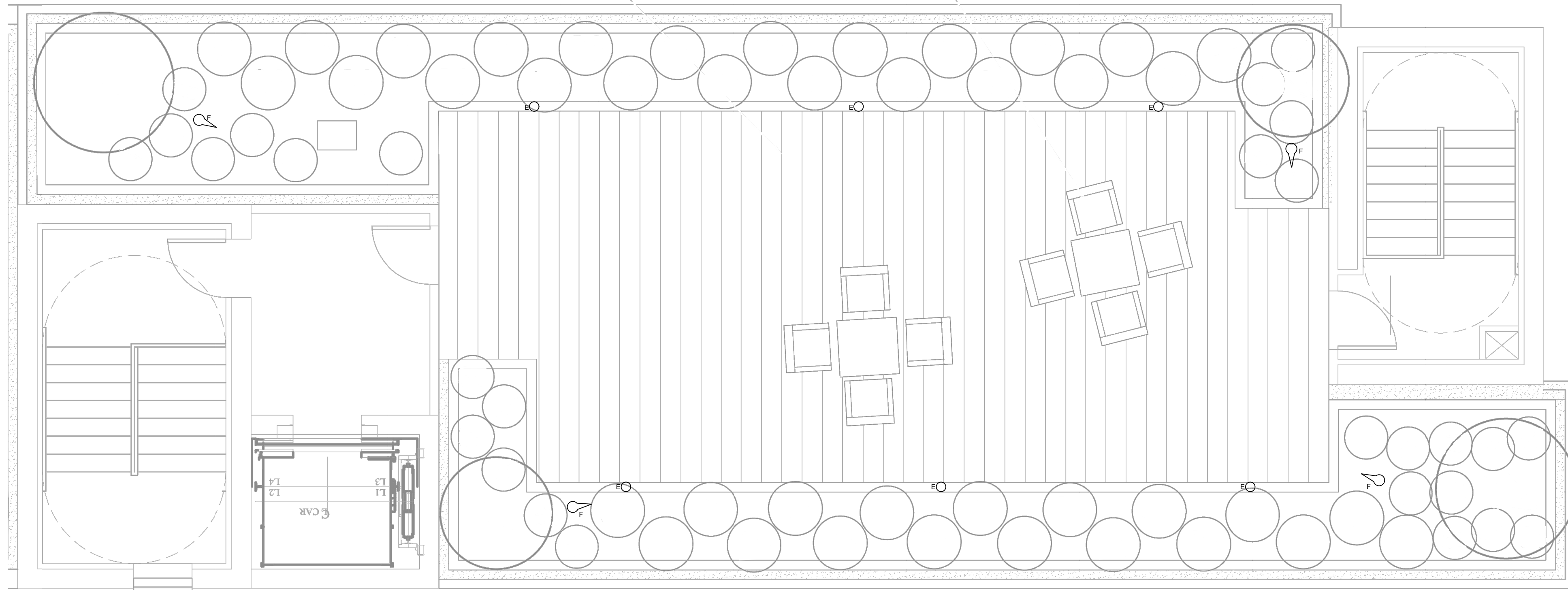
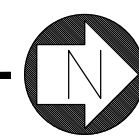
13301 SE 79th PL, Unit A205, NEWCASTLE, WA 98059
(M) 425.765.3992 chcarc@gmail.com

1038 MIXED USE PROJECT 1040 SOUTH KING STREET SEATTLE WA 98104			SHEET NAME SITE LIGHTING PLAN
NUMBER	DATE	DESCRIPTION OF REVISIONS	SHEET NUMBER
03-28-2021		BUILDING PERMIT SET SUBMITTAL	E1.00
07-09-2025		BLDG DEPT REVISIONS	



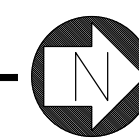
ROOF TOP PHOTOMETRICS

SCALE: 1/4" = 1'-0"



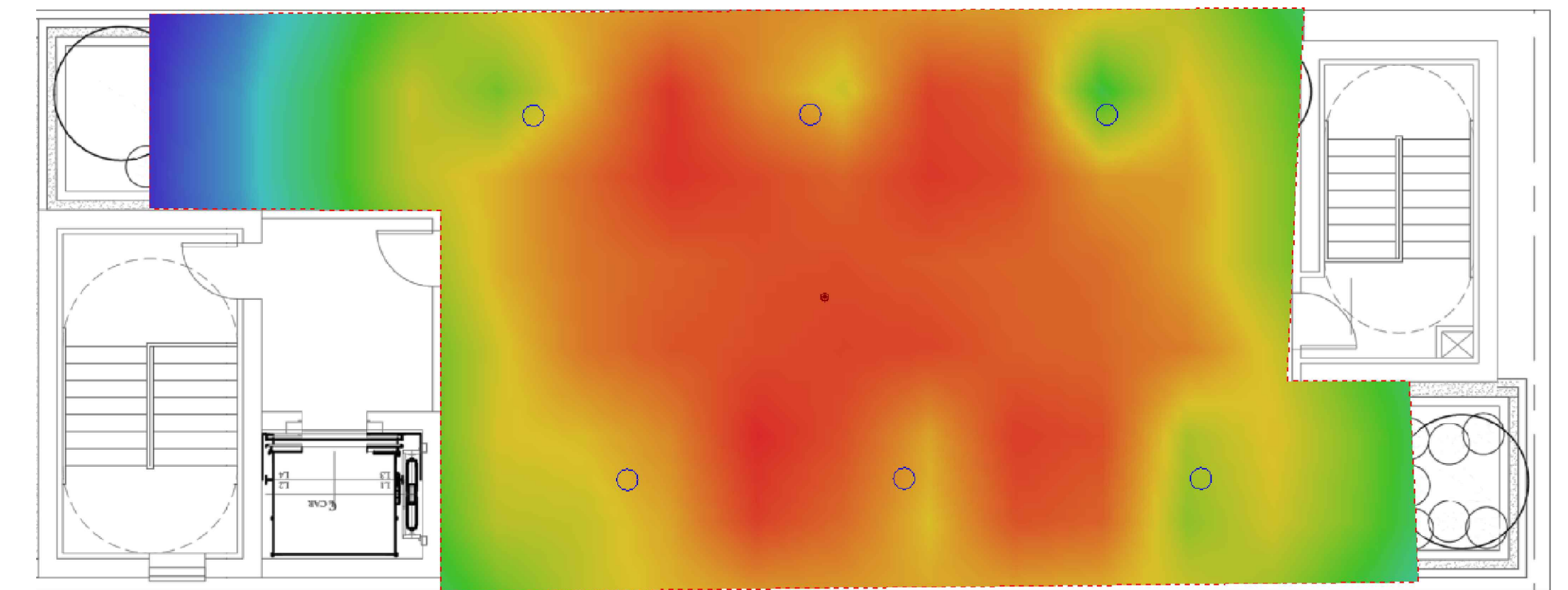
ROOF TOP AMENITY LIGHT FIXTURE LAYOUT

SCALE: 1/4" = 1'-0"



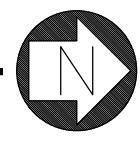
STATISTICS				
SYMBOL	AVERAGE	MAX.	MIN.	AVG./MIN.
+	5.2 fc	7.5 fc	1.1 fc	4.7:1

LIGHTING FIXTURE SCHEDULE					
DESIGNATION	DESCRIPTION	LAMPS	MOUNTING	MANUFACTURER	VA
COMMON AREA LIGHTING FIXTURES					
D	BOLLARD 42" x 6", BUG: B0-U1-G0, WET RATED, BLACK FINISH	LED 424 LUMENS 3000K	FLOOR	HELIO BOLLARD SERIES 600 LBHLO-603	40
E	PATHWAY BOLLARD 9.75" x 6", BUG: B1-U3-G1, WET RATED, BLACK FINISH	LED 886 LUMENS 3000K	FLOOR	FORMS + SURFACES LIGHT COLUMN PATHWAY BOLLARD SERIES 500	14
F	SPOT AND FLOOD LIGHT, LANDSCAPING ACCENTS MINI MR16, 12V LAMP, 9-15V AC, WET RATED, BLACK FINISH	LED 680 LUMENS 3000K	GRADE	KIRCHLER COPPER ACCENT LIGHT	35



ROOF TOP LIGHTING HEAT MAP

SCALE: NOT TO SCALE



CITY STAMP

CHC ARCHITECTS
AWA
Electrical Consultants, Inc.
 190115 36th Avenue West, Suite E
 Lynnwood, Washington 98036
 Phone (425) 775-1799 FAX (425) 774-9870

13301 SE 79th PL, Unit A205, NEWCASTLE, WA 98059
 (M) 425.765.3992 chcarc@gmail.com

1038 MIXED USE PROJECT			SHEET NAME
1040 SOUTH KING STREET			ROOF TOP AMENITY
SEATTLE WA 98104			LIGHTING PLAN
NUMBER	DATE	DESCRIPTION OF REVISIONS	SHEET NUMBER
03-28-2021		BUILDING PERMIT SET SUBMITTAL	E1.02
01-09-2025		BLDG DEPT REVISIONS	

Helio Bollard, Series 600

LBHLO-603

Quantity: 1

Weight: 35.00 lbs.

Dimension: DIAMETER-6"

Overall Height-40"

Configuration: Illuminated

40w/20w Custom LED Light Engine

Voltage 120/277v

Color Temperature: 4000K

Light Distribution: 360°

Body Material: Stainless Steel

Body Finish: Powder Coat Black Finish

Mounting Surface: Mount on Post



SPECIFICATION SHEET

T 800.451.0410 | www.forms-surfaces.com

© 2024 Forms+Surfaces | All dimensions are nominal. Specifications and pricing subject to change without notice. For the most current version of this document, please refer to our website at www.forms-surfaces.com.

Smart Code: LBHLO-603-LT-4K-360-BST-6A5-5FMJ

Page 1 of 1 | Rev: 10-08-24

PRODUCT DATA

LIGHT COLUMN™ PATHWAY BOLLARD

Stainless steel, the versatile Light Column Pathway Bollard readily integrates into a wide range of settings. Pathway Bollards have a compact overall height of 9.75" and are available in 5" or 6" diameters to suit other Light Column fixtures. Light Column Bollards in illuminated, RGBW, non-illuminated, and security core variations, and Light Column Pedestrian Lighting, Light Column Pathway Bollards feature high-performance Cree® LEDs.

MATERIAL & CONSTRUCTION DETAILS	MATERIALS & FINISHES	INSTALLATION & MAINTENANCE
CONFIGURATIONS <ul style="list-style-type: none"> Light Column Pathway Bollards are available in two sizes. Series 500 columns are 5" (127 mm) diameter. Series 600 columns are 6" (152 mm) diameter. Both Series 500 and Series 600 bollards feature stainless steel. 	<ul style="list-style-type: none"> Pathway bollards have a tubular stainless steel column, white-treated acrylic lens, and a stainless steel head cap. Standard stainless steel finish is satin with Ceramloc finish. See Series for details. For colored powdercoat colors see the Forms+Surfaces Powdercoat Color Chart. Other colors are available for an additional charge. 	<ul style="list-style-type: none"> Standard mounting is surface mount with 3/16" thick stainless steel base plate, suited for restoration capacity. Stainless steel mounting hardware sold separately. Templates are available upon request. Installation of a surge protector as part of each unit's wiring is recommended.
WEIGHT <ul style="list-style-type: none"> Series 500: 10 lbs (4.5 kg) Series 600: 13 lbs (5.9 kg) 	LED & DRIVER <ul style="list-style-type: none"> Custom LED board with Cree® LEDs. Feature advanced LED technology with 14W, 3000K warm white and 4000K neutral white LEDs. LED driver includes high efficiency, constant output current, with over-voltage, short circuit, and overheat protection. LED driver input power is 100-277V. Driver has 0-10V dimming capabilities. LED driver certifications include: IP68 (weatherproof) enclosure, and Class 2 rated output (UL8750) 	MAINTENANCE <ul style="list-style-type: none"> Most surfaces can be cleaned as needed using a soft cloth or brush with warm water and a mild detergent. Avoid abrasive cleaners.

CERAMLOC TREATMENT
Ceramloc is an invisible surface treatment that offers significantly enhanced protection from weather and graffiti and increases the maintenance ease of stainless steel. Ceramloc combines ceramic durability with an unparalleled ability to lock out water spots, fingerprints, graffiti and more. Patented technology bonds nano-silica particles to the surface of the stainless steel. The treatment minimally alters the surface appearance of the stainless steel and offers numerous benefits:

- Easily Cleaned:** The Ceramloc treatment creates a surface that simultaneously resists fingerprints and is easy to clean. Water spots, grease marks and more can be quickly wiped away. It also creates an "anti-graffiti" surface – even permanent marker is easily removed with a clean microfiber towel and water.
- Durable:** Ceramloc-treated materials are abrasion- and scratch-resistant. The treatment is permanent, UV stable, and will not degrade or discolor over time.
- Environmentally Sound:** The Ceramloc treatment is a no-VOC, water-based process. Because Ceramloc surfaces are so easily maintained, cleaning solutions and maintenance are kept to a minimum.

LAMP DESCRIPTIONS

FIGURE	LAMP	DESCRIPTION	COLOR TEMPERATURE	LUMINAIRE LUMENY*	B.U.L. RATING	EMITTING TEMPERATURE °C
Series 500	3000K LED	14W custom LED light engine	3000K	886	B1-LS-G1	-30
Series 500	4000K LED	14W custom LED light engine	4000K	886	B1-LS-G1	-30
Series 600	3000K LED	14W custom LED light engine	3000K	808	B0-LS-G1	-30
Series 600	4000K LED	14W custom LED light engine	4000K	808	B0-LS-G1	-30

*LED lumens represents the absolute photometry for the luminaire, and indicates the lumens out of the entire fixture.
NOTE: Pole stands and isofootcandle plots can be found on the Light Column Pathway Bollard product page on our website.

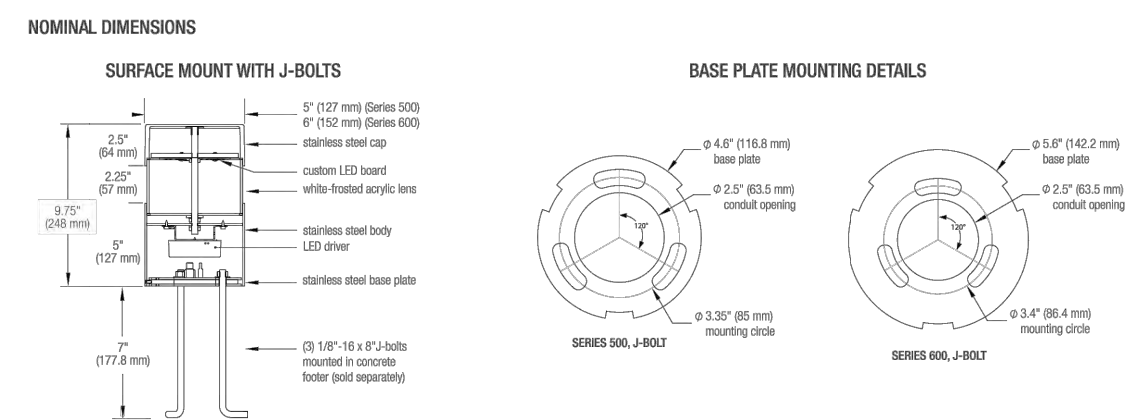
T 1.800.451.0410 | F 425.385.4795 | www.forms-surfaces.com

PAGE 1 of 2 | REV: 04/01/24

© 2024 Forms+Surfaces | All dimensions are nominal. Specifications and pricing subject to change without notice. For the most current version of this document, please refer to our website at www.forms-surfaces.com.

PRODUCT DATA

LIGHT COLUMN™ PATHWAY BOLLARD



MODEL NUMBERS AND DESCRIPTIONS

MODEL	DESCRIPTION
LBHLO-501	Light Column Pathway Bollard, Series 500, LED
LBHLO-601	Light Column Pathway Bollard, Series 600, LED

PRODUCT OPTIONS
The following options are available for an upcharge:
Add powdercoat color from Forms+Surfaces Powdercoat Color Chart. **BLACK** Custom RAL powdercoat color
Stainless steel mounting hardware sold separately.

CERTIFICATION
• ETL and C-ETL, listed for wet locations.

ENVIRONMENTAL CONSIDERATIONS
• Please refer to the Light Column Pathway Bollard Environmental Data Sheets for detailed environmental impact information.
• Light Column Pathway Bollard has high recycled content and is highly recyclable.
• Powdercoat finishes are no- or low-VOC, depending on color.
• Low maintenance.

LEAD TIME: 6 to 8 weeks. Shorter lead times may be available upon request. Please contact us to discuss your specific timing requirements.

PRICING: Please contact us at 800.451.0410 or sales@forms-surfaces.com. All Forms+Surfaces, we design, manufacture and sell our products directly to you. Our sales team is available to assist you with questions about our products, requests for quotes, and orders. Territory Managers are located worldwide to assist with the front-end specification and quoting process, and our in-house Project Sales Coordinators follow your project through from the time you place an order to shipment.

TO ORDER SPECIFY: Quantity, model, finish, lamp, shield (if applicable), and mounting. Design Guides are available on our website to lead you through the specification process in a simple checkbox format.

T 1.800.451.0410 | F 425.385.4795 | www.forms-surfaces.com

PAGE 2 of 2 | REV: 04/01/24

© 2024 Forms+Surfaces | All dimensions are nominal. Specifications and pricing subject to change without notice. For the most current version of this document, please refer to our website at www.forms-surfaces.com.

15384AZT

© 2024 Kichler Lighting LLC. All Rights Reserved.

SPECIFICATIONS

Certifications/Qualifications

ADA Compliant	No
ProsciD	No
Dark Sky Compliant	No
Location Rating	Wet
Warranty	kichler.com/warranty

Dimensions

Height	3.66"
Length	6"
Width	2.5"
Weight	1.09 LBS

Electrical

Input Voltage	12 V
---------------	------

Light Source

Light Source	Bulb
Lamp Included	Not Included
# Of Bulbs/LED Modules	1
Max. Cr. Nominal Watt	35 W
Lamp Type	MR16
Socket Type	BIPI

Mounting/Installation

Interior/Exterior	Exterior Product
Mounting Style	GROUND STAKE
Mountable On Wall Or Ceiling	No
Mounting Weight	1.09 LBS
Modular	No
Lead Wire Length	35
Wire Connectors	Wire Nuts

FIXTURE ATTRIBUTES

Housing/Glass	Aluminum
Primary Material	Glass
Diffuser Description	No
Shade Included	No

Product/Ordering Information

Sku	15384AZT
Finish	Textured Architectural Bronze
UPC	78392742664

Finishes

- Centennial Brass
- Copper
- Textured Architectural Bronze
- Textured Architectural Bronze
- Textured Black



ALSO IN THIS FAMILY



15350CC

Kichler.com

KICHLER.

1

CITY STAMP



13301 SE 79th PL, Unit A205, NEWCASTLE, WA 98059
(M) 425.785.3992 chcarch@gmail.com



Electrical Consultants, Inc.
19015 36th Avenue West, Suite B
Lynnwood, Washington 98036
Phone (425) 775-1799 FAX (425) 774-9670

1038 MIXED USE PROJECT
1040 SOUTH KING STREET
SEATTLE WA 98104

NUMBER	DATE	DESCRIPTION OF REVISIONS
03-28-2021		BUILDING PERMIT SET SUBMITTAL
07-09-2025		BLDG DEPT REVISIONS

SHEET NAME
ROOF TOP AMENITY
LIGHT FIXTURE
CUT SHEETS

SHEET NUMBER

E1.03