

ABOUT

The Hau Hau Market mural project is part of Friends of Little Saigon's (FLS) Crime Prevention Through Environmental Design (CPTED) program, a collaborative effort to support small businesses in Little Saigon. FLS has partnered with the Seattle Police Department (SPD) Crime Prevention Coordinator to conduct security assessments and provide tailored recommendations for up to 10 businesses in the neighborhood. While murals are not guaranteed for every location, they are considered as part of place-based strategies to enhance safety and vibrancy.

This initiative is funded by the Department of Commerce's Community Reinvestment Project (CRP), a one-time investment aimed at supporting small businesses through physical and operational improvements. The project prioritizes high-visibility locations and community gathering spaces, with the broader goal of fostering a welcoming, culturally reflective environment in Little Saigon.

ARTIST



Craig Cundiff is a Mt. Baker-based artist born in New Orleans. After relocating subsequent to Hurricane Katrina, Cundiff has since established himself within Seattle's art community with his large scale murals. Over the last nine years, Craig has painted over 50 public works of art that celebrate the strength and beauty of a diversity community. In 2025, Craig was the grant prize recipient of the Neddy Award in painting. The Neddy is the largest and longest running art award in the PNW and Craig is the first muralist to ever receive the award. Past clients include Facebook, Starbucks, The Storm, The Museum of Pop Culture, Merrell, and Outdoor Research. Craig has also partnered with the City of Seattle, the City of Tukwila, and the City of New Orleans to create permanent works of public art. Community Engagement and collaboration is at the core of Craig's practice and he has worked closely with architects, community leaders and diverse stakeholders to create meaningful works of public art.

PROPOSED ACTION / MODIFICATION

Hau Hau Market's King St. exterior wall is currently painted a pale tan color. The wall is approximately 98' in length and varies from 3' and 20' in height. There is a parking lot entrance in the middle that are included in the modification scope of work.

Our proposed modification is to create a mural on side of the building where the parking lot entrance is, as identified on the following slides.

The proposed location of the mural is on one of the main pedestrian throughfare through the neighborhood and business. Hau Hau Market is a key business in Little Saigon with many folks shopping nearby. It is located in the central part of Little Saigon, close to public and community spaces such as Hoa Mai Park and the Little Saigon Creative. The design is to incorporate the history of this business's customer background , highlighting the story of immigration and heritage in addition to improving the pedestrian experience in the area.

The mural is to be produced by Craig Cundiff and painted directly on the identified wall area. The completed mural will be coated with an anti-graffiti coating.

SITE PLAN WITH PROPOSED MURAL LOCATION

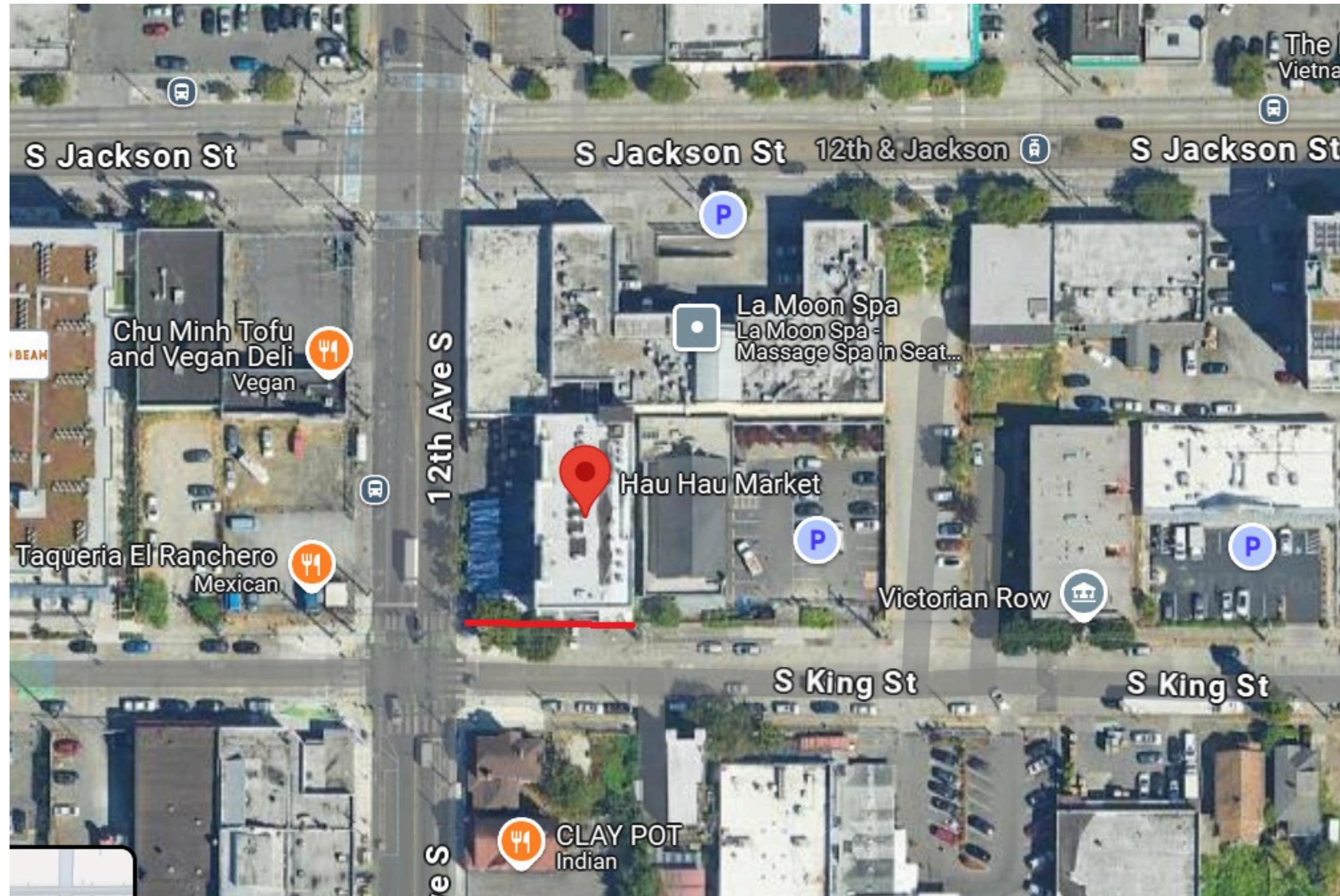
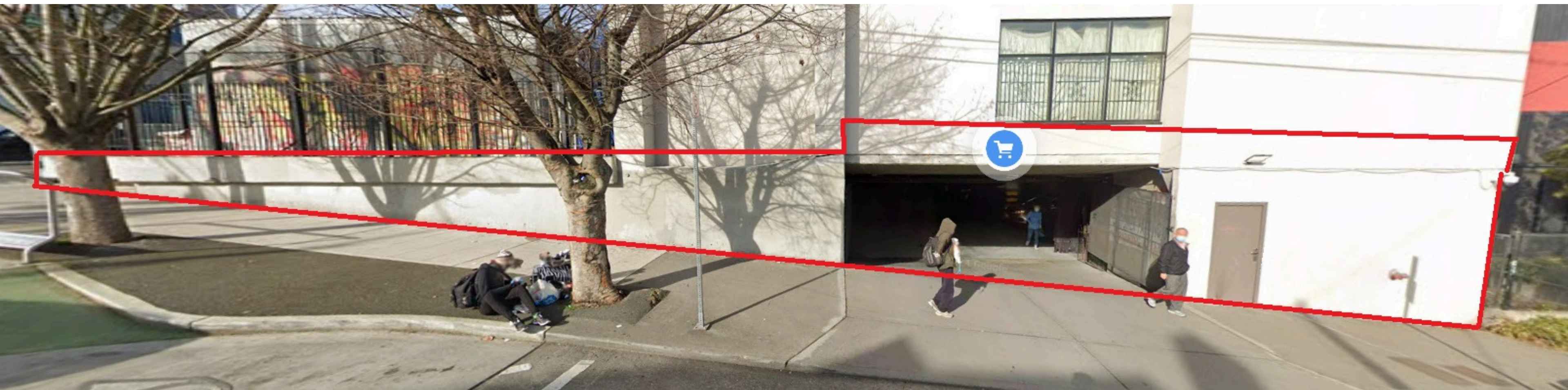
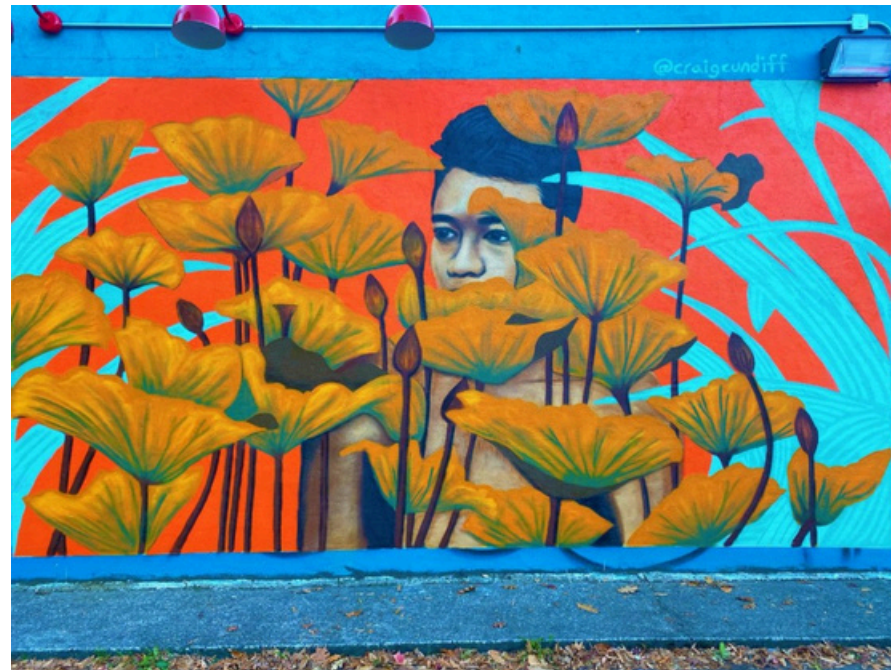


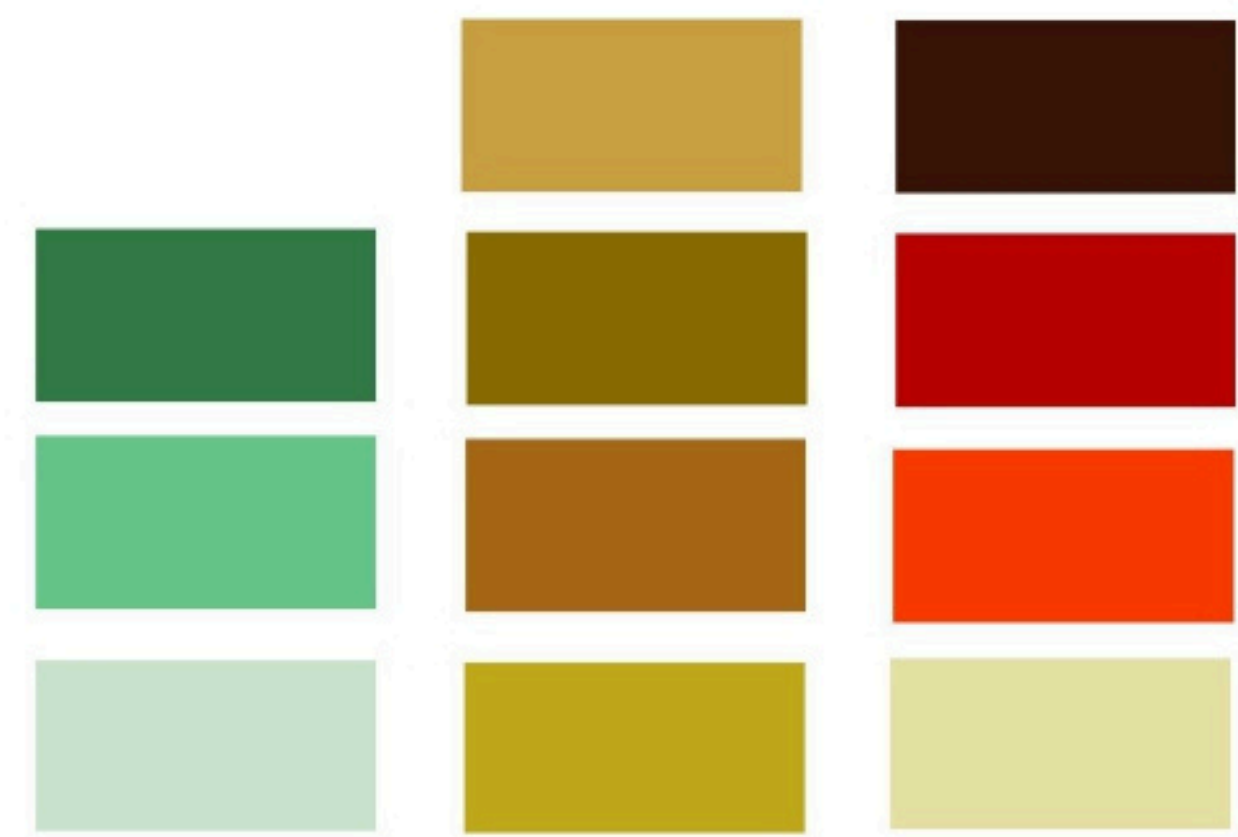
PHOTO OF EXISTING SPACE



CRAIG CUNDIFF | ARTIST PORTFOLIO SAMPLES



Color Guide



PROPOSED DESIGN CONCEPT



Orange and Jade color scheme complements existing market colors.



Boats arriving on shore represents the historical immigration of Asian people to America.

PARKING



The Kitchen God myth beautifully bridges Vietnamese and Chinese cultures, offering a powerful metaphor for home, memory, and moral accountability — all themes that resonate in the immigrant experience and would translate beautifully in a mural.

Safety data sheet
according to 1907/2006/EC, Article 31

01425-XXXX

Printing date 03/24/2015






Version number 4

Revision: 03/24/2015

1 Identification of the substance/mixture and of the company/undertaking

- **Product identifier:**
- **Trade name:** **MONTANA GOLD Spray Paint all colors, fluo and shock**
- **Article number:**
283604 - 285844, 285899, 285905, 283929, 364945, 419331, 419348, 419355, 419362, 419379, 419386, 419393, 419409, 419416, 419423, 419430, 419447, 419454, 419461, 419478
- **Relevant identified uses of the substance or mixture and uses advised against --**
- **Application of the substance / the mixture** *Lacquer*
- **Details of the supplier of the safety data sheet**
- **Manufacturer/Supplier:**
MONTANA CANS
Häusserstr. 36
D-69115 Heidelberg
Tel. +49-6221-36333-30
Fax +49-6221-36333-33
info@montana-cans.de
www.montana-cans.com
- **Further information obtainable from:** *Department Product Safety*
- **Emergency telephone number:**
Tel.: +49 6266-75-310
Fax +49 6266-75-362
(Mo - Th 08:00 am - 04:00 pm, Fr 08:00 am - 00:30 pm)

2 Hazards identification

- Classification of the substance or mixture**
-  **GHS02 flame**
Flam. Aerosol 1 H222-H229 Extremely flammable aerosol. Pressurised container: May burst if heated.
-  **GHS08 health hazard**
Carc. 2 H351 Suspected of causing cancer.
-  **GHS07**
*Eye Irrit. 2A H319 Causes serious eye irritation.
STOT SE 3 H336 May cause drowsiness or dizziness.*
-
- Classification according to Directive 67/548/EEC or Directive 1999/45/EC**
-  **Irritant**
Irritating to eyes.
-  **Extremely flammable**
*Extremely flammable.
Repeated exposure may cause skin dryness or cracking. Vapours may cause drowsiness and dizziness.*
- Information concerning particular hazards for human and environment:**
*The product has to be labelled due to the calculation procedure of the "General Classification guideline for preparations of the EU" in the latest valid version.
Warning! Pressurised container.
Has a narcotising effect.*

(Contd. on page 2)

— 1115



Safety data sheet
according to 1907/2006/EC, Article 31

Revision: 03/24/2015

Printing date 03/24/2015

Version number 4

Trade name: MONTANA GOLD Spray Paint all colors, fluo and shock

For the wording of the listed risk phrases refer to section 16.

(Contd. of page 3)

4 First aid measures

- **Description of first aid measures**
- **After inhalation:** Supply fresh air; consult doctor in case of complaints.
- **After skin contact:** Generally the product does not irritate the skin.
- **After eye contact:**
Rinse opened eye for several minutes under running water. If symptoms persist, consult a doctor.
- **After swallowing:** Drink plenty of water and provide fresh air. Call for a doctor immediately.
- **Information for doctor:**
- **Most important symptoms and effects, both acute and delayed** No further relevant information available.
- **Indication of any immediate medical attention and special treatment needed**
No further relevant information available.

5 Firefighting measures

- **Extinguishing media**
- **Suitable extinguishing agents:**
CO2, bluspoeder of waterstraal. Grotere brand met waterstraal of met schuim.
Vaten met water afkoolen.
- **For safety reasons unsuitable extinguishing agents:** Water with full jet
- **Special hazards arising from the substance or mixture** No further relevant information available
- **Advice for firefighters** -

6 Accidental release measures

- **Personal precautions, protective equipment and emergency procedures**
Wear protective equipment. Keep unprotected persons away.
- **Environmental precautions:** Do not allow product to reach sewage system or any water course.
- **Methods and material for containment and cleaning up:** Ensure adequate ventilation.
- **Reference to other sections**
See Section 7 for information on safe handling.
See Section 8 for information on personal protection equipment.
See Section 13 for disposal information.

7 Handling and storage

- **Handling:**
- **Precautions for safe handling**
Ensure good ventilation/exhaustion at the workplace.
Open and handle receptacle with care.
- **Information about fire - and explosion protection:**
Keep ignition sources away - Do not smoke.
Protect against electrostatic charges.
- **Conditions for safe storage, including any incompatibilities**
- **Storage:**
- **Requirements to be met by storerooms and receptacles:**
Store in a cool location.
Observe official regulations on storing packagings with pressurised containers.
- **Information about storage in one common storage facility:** Not required.
- **Further information about storage conditions:**
Store in cool, dry conditions in well sealed receptacles.
Protect from heat and direct sunlight.

(Contd. on page 5)

— 473 —



Section 4. First aid measures

- Skin contact** : Adverse symptoms may include the following:
irritation
redness
reduced fetal weight
increase in fetal deaths
skeletal malformations
- Ingestion** : Adverse symptoms may include the following:
reduced fetal weight
increase in fetal deaths
skeletal malformations

Indication of immediate medical attention and special treatment needed, if necessary

- Notes to physician** : In case of inhalation of decomposition products in a fire, symptoms may be delayed. The exposed person may need to be kept under medical surveillance for 48 hours.
- Specific treatments** : No specific treatment.
- Protection of first-aiders** : No action shall be taken involving any personal risk or without suitable training. If it is suspected that fumes are still present, the rescuer should wear an appropriate mask or self-contained breathing apparatus. It may be dangerous to the person providing aid to give mouth-to-mouth resuscitation. Wash contaminated clothing thoroughly with water before removing it, or wear gloves.

See toxicological information (Section 11)

Section 5. Fire-fighting measures

Extinguishing media

- Suitable extinguishing media** : Use dry chemical, CO₂, water spray (fog) or foam.
- Unsuitable extinguishing media** : Do not use water jet.

- Specific hazards arising from the chemical** : Flammable liquid and vapor. Runoff to sewer may create fire or explosion hazard. In a fire or if heated, a pressure increase will occur and the container may burst, with the risk of a subsequent explosion.

- Hazardous thermal decomposition products** : Decomposition products may include the following materials:
carbon dioxide
carbon monoxide
nitrogen oxides
halogenated compounds
metal oxide/oxides

- Special protective actions for fire-fighters** : Promptly isolate the scene by removing all persons from the vicinity of the incident if there is a fire. No action shall be taken involving any personal risk or without suitable training. Move containers from fire area if this can be done without risk. Use water spray to keep fire-exposed containers cool.

- Special protective equipment for fire-fighters** : Fire-fighters should wear appropriate protective equipment and self-contained breathing apparatus (SCBA) with a full face-piece operated in positive pressure mode.

Section 6. Accidental release measures

Personal precautions, protective equipment and emergency procedures

- For non-emergency personnel** : No action shall be taken involving any personal risk or without suitable training. Evacuate surrounding areas. Keep unnecessary and unprotected personnel from entering. Do not touch or walk through spilled material. Shut off all ignition sources. No flames, smoking or flames in hazard area. Avoid breathing vapor or mist. Provide adequate ventilation. Wear appropriate respirator when ventilation is inadequate. Put on appropriate personal protective equipment.
- For emergency responders** : If specialized clothing is required to deal with the spillage, take note of any information in Section 8 on suitable and unsuitable materials. See also the information in "For non-emergency personnel".

- Environmental precautions** : Avoid dispersal of spilled material and runoff and contact with soil, waterways, drains and sewers. Inform the relevant authorities if the product has caused environmental pollution (sewers, waterways, soil or air).

Methods and materials for containment and cleaning up

- Small spill** : Stop leak if without risk. Move containers from spill area. Use spark-proof tools and explosion-proof equipment. Dilute with water and mop up if water-soluble. Alternatively, or if water-insoluble, absorb with an inert dry material and place in an appropriate waste disposal container. Dispose of via a licensed waste disposal contractor.
- Large spill** : Stop leak if without risk. Move containers from spill area. Use spark-proof tools and explosion-proof equipment. Approach release from upwind. Prevent entry into sewers, water courses, basements or confined areas. Wash spillages into an effluent treatment plant or proceed as follows. Contain and collect spillage with non-combustible, absorbent material e.g. sand, earth, vermiculite or diatomaceous earth and place in container for disposal according to local regulations (see Section 13). Dispose of via a licensed waste disposal contractor. Contaminated absorbent material may pose the same hazard as the spilled product. Note: see Section 1 for emergency contact information and Section 13 for waste disposal.

Section 7. Handling and storage

Precautions for safe handling

- Protective measures** : Put on appropriate personal protective equipment (see Section 8). Persons with a history of skin sensitization problems should not be employed in any process in which this product is used. Avoid exposure - obtain special instructions before use. Avoid exposure during pregnancy. Do not handle until all safety precautions have been read and understood. Do not get in eyes or on skin or clothing. Do not breathe vapor or mist. Do not ingest. Use only with adequate ventilation. Wear appropriate respirator when ventilation is inadequate. Do not enter storage areas and confined spaces unless adequately ventilated. Keep in the original container or an approved alternative made from a compatible material, kept tightly closed when not in use. Store and use away from heat, sparks, open flame or any other ignition source. Use explosion-proof electrical (ventilating, lighting and material handling) equipment. Use only non-sparking tools. Take precautionary measures against electrostatic discharges. Empty containers retain product residue and can be hazardous. Do not reuse container.
- Advice on general occupational hygiene** : Eating, drinking and smoking should be prohibited in areas where this material is handled, stored and processed. Workers should wash hands and face before eating, drinking and smoking. Remove contaminated clothing and protective equipment before entering eating areas. See also Section 8 for additional information on hygiene measures.

Date of issue/Date of revision	: 2/8/2022	Date of previous issue	: 11/11/2021	Version	: 12.01	4/14
B97C150	Anti-Graffiti Coating Clear			SHW-85-NA-GHS-US		

Date of issue/Date of revision	: 2/8/2022	Date of previous issue	: 11/11/2021	Version	: 12.01	5/14
B97C150	Anti-Graffiti Coating Clear			SHW-85-NA-GHS-US		

- Graffiti coating

INSTALLATION DETAILS

The mural will be painted on top of the existing building with minimal disturbance to the sidewalk thoroughway. Depending on the colors selection and installation period, spray paint may also be used.

During the installation period, hand-painting tools and ladders will be staged in the work area but will be stored in personal storage or inside Hau Hau Market's property. It will not block walkway or be visible outside of working hours.

The finished mural will be coated in an anti-graffiti coating. This coating is non-sacrificial and will not require re-coating after cleaning. This coating will also provide UV protection for additional color protection of the finished mural.

PROPERTY OWNER APPROVAL



quang lam

to me ▼

Alina

Quang Lam owner/ manager
I approve of this mural.

Quang Lam

3:24 PM (10 minutes ago)

On Jun 25, 2025, at 12:25 PM, Alina Doan <alina.doan@flsseattle.org> wrote:

