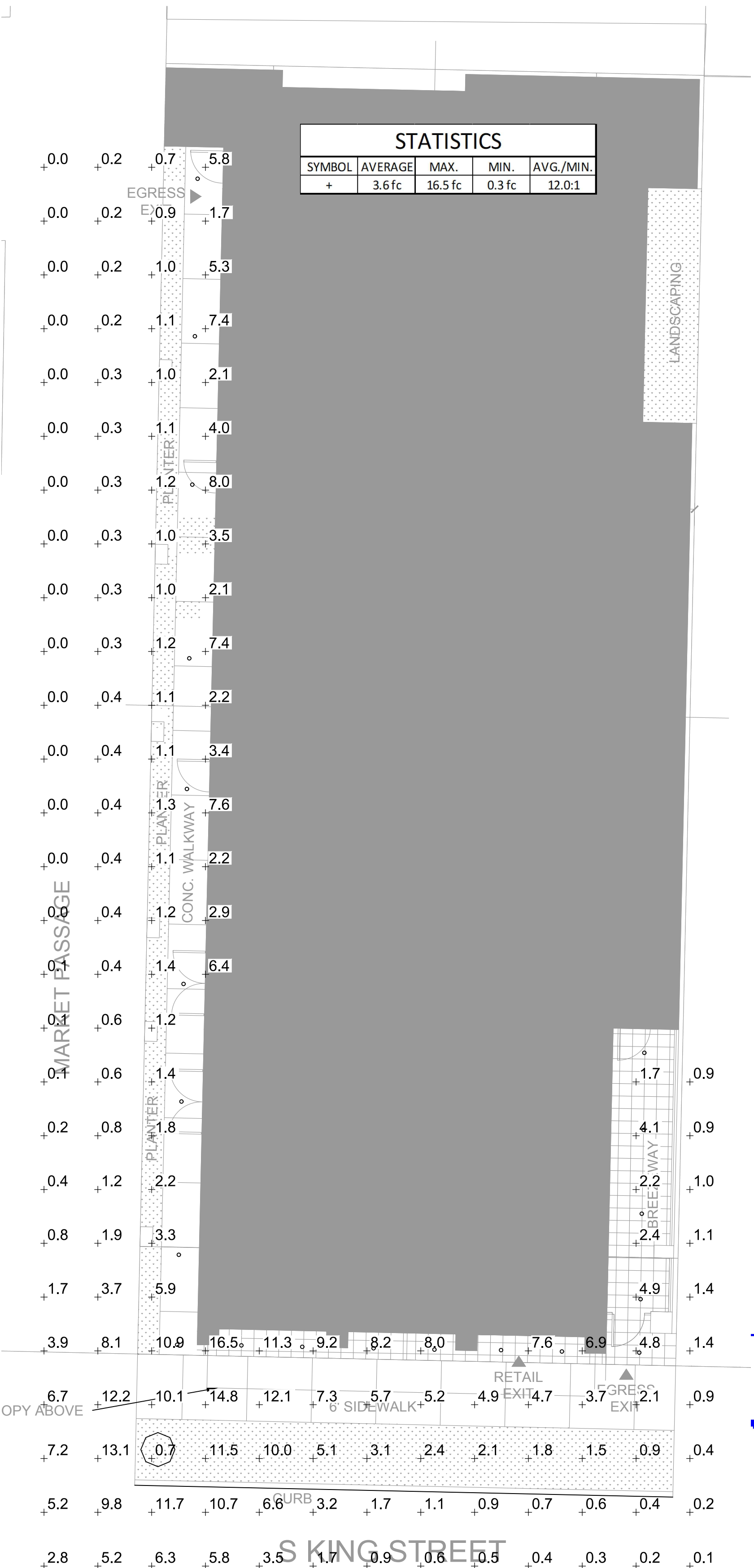


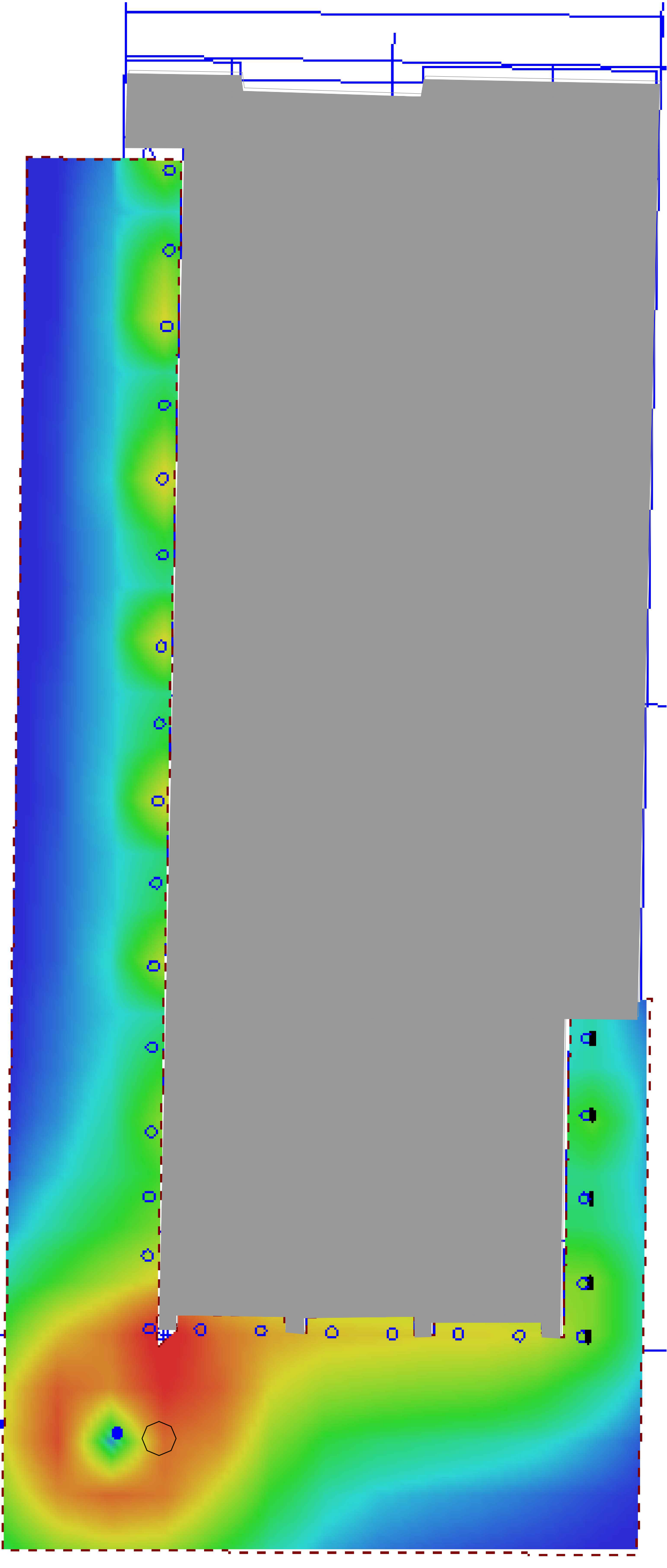
GROUND LEVEL LIGHT FIXTURE LAYOUT

SCALE: 1/8" = 1'-0"



GROUND LEVEL PHOTOMETRICS

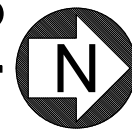
SCALE: 1/8" = 1'-0"



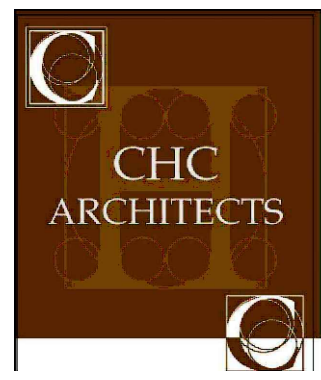
S KING STREET

GROUND LEVEL LIGHTING HEAT MAP

SCALE: 1/8" = 1'-0"



CITY STAMP



13301 SE 79th PL, Unit A205, NEWCASTLE, WA 98059
(M) 425.765.3952 chcarch@gmail.com



Electrical Consultants, Inc.
19015 36th Avenue West, Suite B
Lynnwood, Washington 98036
Phone (425) 775-1799 FAX (425) 774-9870

1038 MIXED USE PROJECT
1040 SOUTH KING STREET
SEATTLE WA 98104

NUMBER	DATE	DESCRIPTION OF REVISIONS
03-28-2021		BUILDING PERMIT SET SUBMITTAL

SHEET NAME
SITE LIGHTING PLAN

SHEET NUMBER

E1.00

Project	1040 S King St	Catalog #		Type	B
Prepared by	LRD	Notes	EXTERIOR OVERHAND LIGHTING		Date

HALO

SMD4 Series

4" Round and Square

Typical Applications
Residential

Product Certification

Made in a facility 100% owned and operated by Cooper Lighting Solutions. All components are sourced from qualified Tier 1 suppliers with rigorous requirements. Cooper Lighting Solutions is a member of the Cooper Lighting Group, Inc.

Product Features

- Ultra-low profile surface luminaire with wide distribution
- Ceiling or wall mounting in compatible junction boxes
- Retrofit 4" recessed downlights with screwbase adapter included
- 2700K, 3000K, 3500K, 4000K or 5000K color temperature; 90 CRI
- Dimmable with 120V dimmer

Dimensional and Mounting Details

COOPER
Lighting Solutions

PDS18032EN page 1
February 22, 2023 10:00 AM

[illegible]

1046: C KING ST

FIXTURE OPTIONS


K56 CLEVELAND/TUDOR • LED

Cleveland

Tudor

HOW TO ORDER

POLE ADAPTER/CANTAL P-1 1/2" Cantal P-2 2" Cantal P-3 3" Cantal P-4 4" Cantal P-5 5" Cantal P-6 6" Cantal P-7 7" Cantal P-8 8" Cantal P-9 9" Cantal P-10 10" Cantal P-11 11" Cantal P-12 12" Cantal P-13 13" Cantal P-14 14" Cantal P-15 15" Cantal P-16 16" Cantal P-17 17" Cantal P-18 18" Cantal P-19 19" Cantal P-20 20" Cantal P-21 21" Cantal P-22 22" Cantal P-23 23" Cantal P-24 24" Cantal P-25 25" Cantal P-26 26" Cantal P-27 27" Cantal P-28 28" Cantal P-29 29" Cantal P-30 30" Cantal P-31 31" Cantal P-32 32" Cantal P-33 33" Cantal P-34 34" Cantal P-35 35" Cantal P-36 36" Cantal P-37 37" Cantal P-38 38" Cantal P-39 39" Cantal P-40 40" Cantal P-41 41" Cantal P-42 42" Cantal P-43 43" Cantal P-44 44" Cantal P-45 45" Cantal P-46 46" Cantal P-47 47" Cantal P-48 48" Cantal P-49 49" Cantal P-50 50" Cantal P-51 51" Cantal P-52 52" Cantal P-53 53" Cantal P-54 54" Cantal P-55 55" Cantal P-56 56" Cantal P-57 57" Cantal P-58 58" Cantal P-59 59" Cantal P-60 60" Cantal P-61 61" Cantal P-62 62" Cantal P-63 63" Cantal P-64 64" Cantal P-65 65" Cantal P-66 66" Cantal P-67 67" Cantal P-68 68" Cantal P-69 69" Cantal P-70 70" Cantal P-71 71" Cantal P-72 72" Cantal P-73 73" Cantal P-74 74" Cantal P-75 75" Cantal P-76 76" Cantal P-77 77" Cantal P-78 78" Cantal P-79 79" Cantal P-80 80" Cantal P-81 81" Cantal P-82 82" Cantal P-83 83" Cantal P-84 84" Cantal P-85 85" Cantal P-86 86" Cantal P-87 87" Cantal P-88 88" Cantal P-89 89" Cantal P-90 90" Cantal P-91 91" Cantal P-92 92" Cantal P-93 93" Cantal P-94 94" Cantal P-95 95" Cantal P-96 96" Cantal P-97 97" Cantal P-98 98" Cantal P-99 99" Cantal P-100 100" Cantal P-101 101" Cantal P-102 102" Cantal P-103 103" Cantal P-104 104" Cantal P-105 105" Cantal P-106 106" Cantal P-107 107" Cantal P-108 108" Cantal P-109 109" Cantal P-110 110" Cantal P-111 111" Cantal P-112 112" Cantal P-113 113" Cantal P-114 114" Cantal P-115 115" Cantal P-116 116" Cantal P-117 117" Cantal P-118 118" Cantal P-119 119" Cantal P-120 120" Cantal P-121 121" Cantal P-122 122" Cantal P-123 123" Cantal P-124 124" Cantal P-125 125" Cantal P-126 126" Cantal P-127 127" Cantal P-128 128" Cantal P-129 129" Cantal P-130 130" Cantal P-131 131" Cantal P-132 132" Cantal P-133 133" Cantal P-134 134" Cantal P-135 135" Cantal P-136 136" Cantal P-137 137" Cantal P-138 138" Cantal P-139 139" Cantal P-140 140" Cantal P-141 141" Cantal P-142 142" Cantal P-143 143" Cantal P-144 144" Cantal P-145 145" Cantal P-146 146" Cantal P-147 147" Cantal P-148 148" Cantal P-149 149" Cantal P-150 150" Cantal P-151 151" Cantal P-152 152" Cantal P-153 153" Cantal P-154 154" Cantal P-155 155" Cantal P-156 156" Cantal P-157 157" Cantal P-158 158" Cantal P-159 159" Cantal P-160 160" Cantal P-161 161" Cantal P-162 162" Cantal P-163 163" Cantal P-164 164" Cantal P-165 165" Cantal P-166 166" Cantal P-167 167" Cantal P-168 168" Cantal P-169 169" Cantal P-170 170" Cantal P-171 171" Cantal P-172 172" Cantal P-173 173" Cantal P-174 174" Cantal P-175 175" Cantal P-176 176" Cantal P-177 177" Cantal P-178 178" Cantal P-179 179" Cantal P-180 180" Cantal P-181 181" Cantal P-182 182" Cantal P-183 183" Cantal P-184 184" Cantal P-185 185" Cantal P-186 186" Cantal P-187 187" Cantal P-188 188" Cantal P-189 189" Cantal P-190 190" Cantal P-191 191" Cantal P-192 192" Cantal P-193 193" Cantal P-194 194" Cantal P-195 195" Cantal P-196 196" Cantal P-197 197" Cantal P-198 198" Cantal P-199 199" Cantal P-200 200" Cantal P-201 201" Cantal P-202 202" Cantal P-203 203" Cantal P-204 204" Cantal P-205 205" Cantal P-206 206" Cantal P-207 207" Cantal P-208 208" Cantal P-209 209" Cantal P-210 210" Cantal P-211 211" Cantal P-212 212" Cantal P-213 213" Cantal P-214 214" Cantal P-215 215" Cantal P-216 216" Cantal P-217 217" Cantal P-218 218" Cantal P-219 219" Cantal P-220 220" Cantal P-221 221" Cantal P-222 222" Cantal P-223 223" Cantal P-224 224" Cantal P-225 225" Cantal P-226 226" Cantal P-227 227" Cantal P-228 228" Cantal P-229 229" Cantal P-	
---	--



OUTDOOR LIGHTING

Date: _____

Type: A

Future: _____

Project: 1040 S KING ST

Approved: _____

FCC400 Four-Inch Round Cylinder Down Lighting

PRODUCT CODE

EXAMPLE: FCC400-10-SPM-18-UNV-927-05L-8KX-25-ETCV

MODEL	HEIGHT	FINISH	SUSP. LENGTH	VOLTAGE	COLOR	LUMENS	FINISH	OPTIC	DIMMING	OPTIONS
FCC400	10	XX		UNV	940	5000	XXX	15		CV

MODEL

FCC400

HEIGHT

10 10.95" Height
12 12.95" Height
14 14.95" Height
16 16.95" Height
18 18.95" Height
20 20.95" Height

MOUNTING

SPM Slope Pendant
SF Surface
WM Wall

SUSP. LENGTH

Select the optional suspension length in inches.
(Top of luminaire to ceiling) (DIM 18" Standard)
6" 12" MAC 6" 11" 12" W/O SLT ET Only and stems
comes in 2 sections "W/O SLT factory & price guide
for other lengths.

VOLTAGE

UNV Universal 120 - 277V AC
347VAC 208 - 250, options only.
For 15 degree, 208 - 250, options only)

COLOR

927 (927SR) 2700K
930 (930SR) 3000K
935 (935SR) 3500K
940 (940SR) 4000K
Other CCT/CRIs available upon request.

LUMENS

5000L 500 lum
1000 1000 lum
1500 1500 lum
2000 2000 lum
2500 2500 lum
3000 3000 lum (Minimum 14")
3500 3500 lum (Minimum 14")

FINISH

BKE Black
BRE Bronze
GRI Gunmetal Grey
SLE Silver
WHE White
CDE Custom Color

OPTIC

15 Beam (5°) (Max 30L)
25 Narrow Flood (25°)
50 Flood (50°)
72 Wide Flood (72°)
90 Flood (90°)

W/SHOT FIELD

155 Spot (15°) (Max 30L)
235 Narrow Flood (23°)
500 Flood (50°)
725 Wide Flood (72°)
900 Flood (90°)

Soft field average light loss
factor is 0.97

DIMMING


ET ELV or TRIAC Driver (120V Phase
Dimming w/ 0-10V Dimmer) (05L - 35L
options only)*
LD 0-10V Dimming, 1% (Standard)

*15 and 155 Beam Angle maximum 30L on
ET Option

OPTIONS

CV Cut-Off Visor

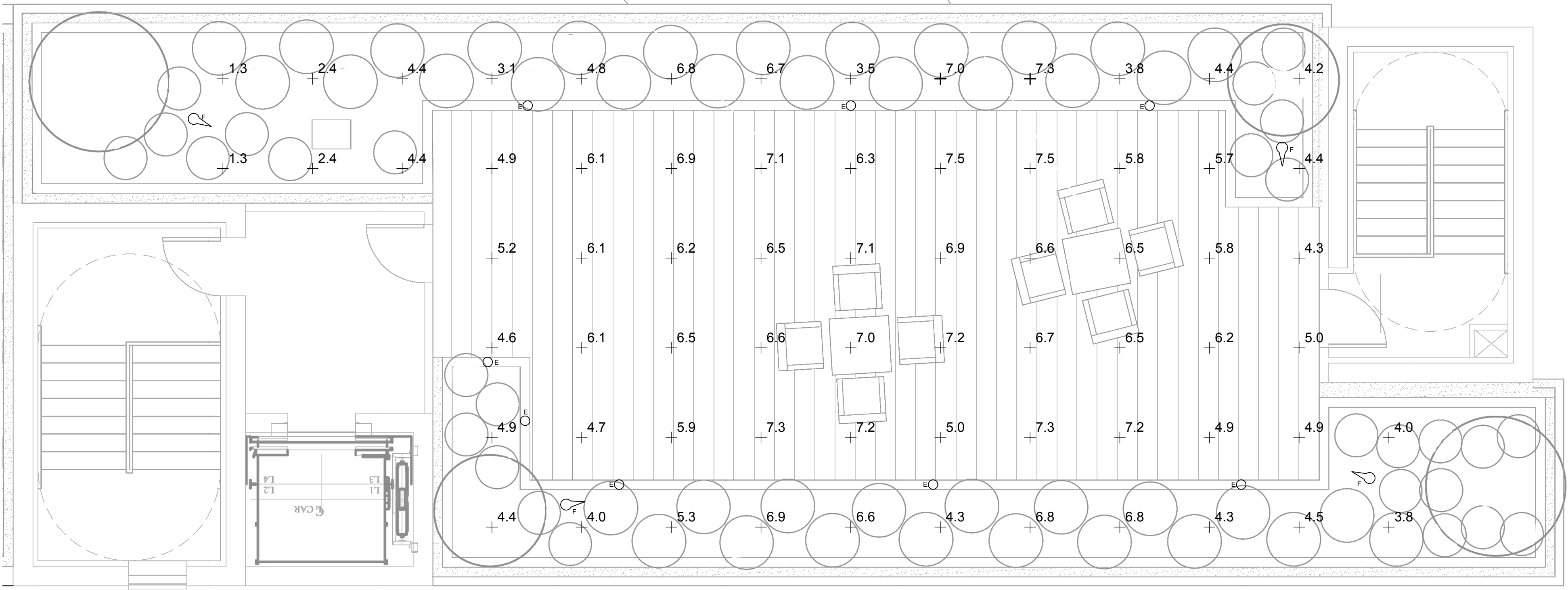
Due to continuous development and improvements, specifications are subject to change without notice.
Product are certified according to IES Lighting Inc. terms and conditions.
© FCL Lighting, Inc. 3609 Swanton Ave • St. Charles, IL • 60174 | fclighting.com | 800.900.1770



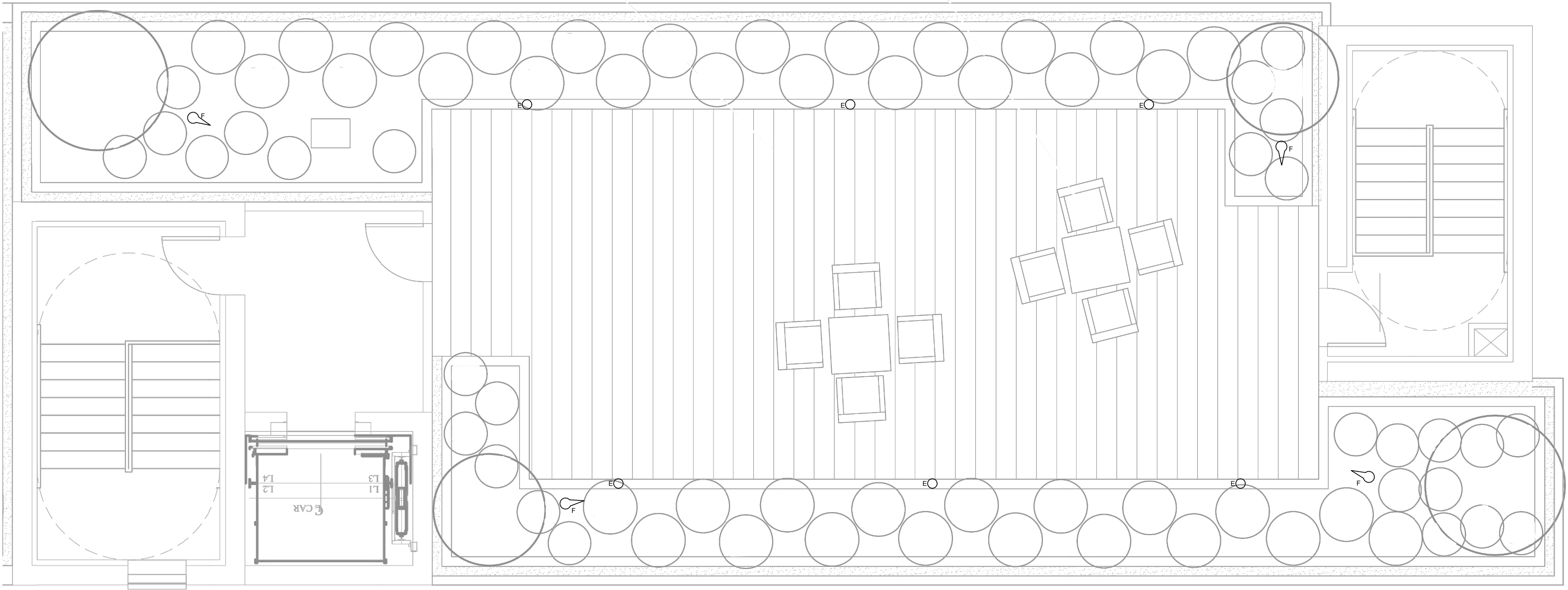
Commercial Lighting Manufacturer Since 1982

JC 08-080724

<div><h1>1038 MIXED USE PROJECT</h1><h2>1040 SOUTH KING STREET</h2><h3>SEATTLE WA 98104</h3></div>			<div><p>SHEET NAME</p><p>EXTERIOR LIGHT FIXTURE CUT SHEETS</p></div>
<div><p>NUMBER</p><p>DATE</p><p>DESCRIPTION OF REVISIONS</p></div>	<div><p>SHEET NUMBER</p><p>E1.01</p></div>		



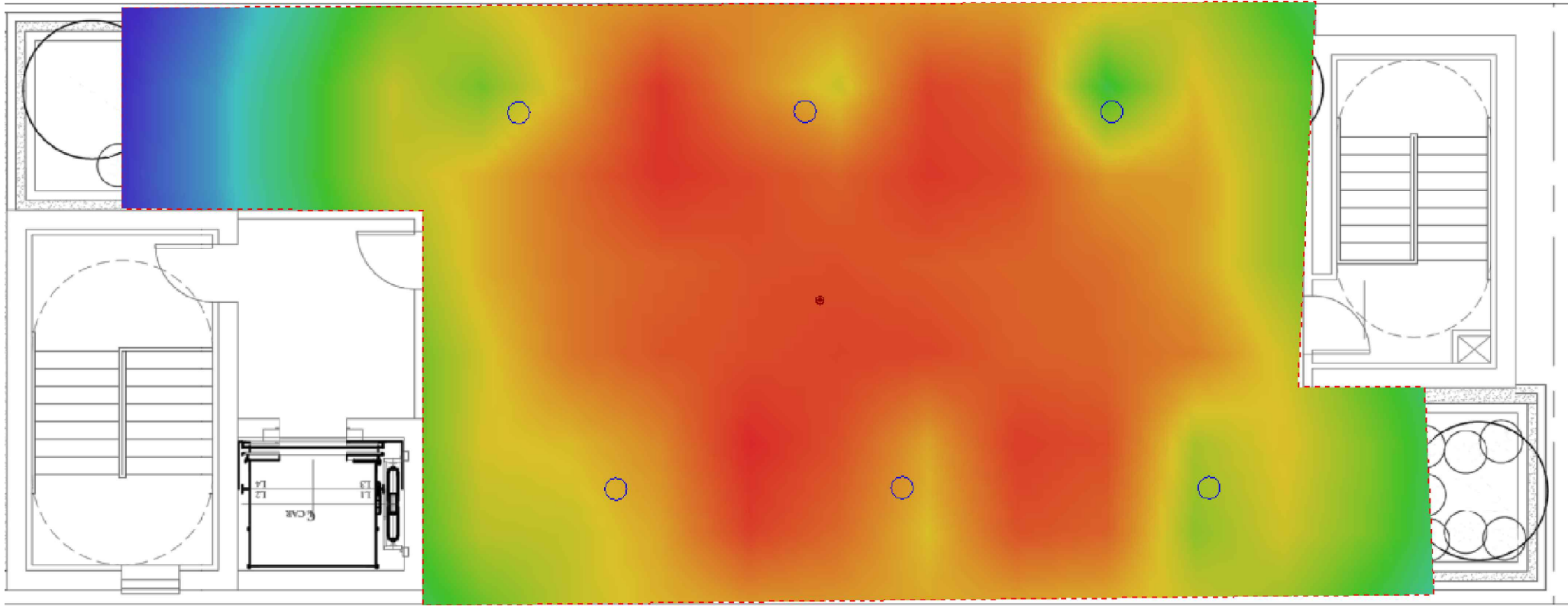
ROOF TOP PHOTOMETRICS
SCALE: 1/4" = 1'-0"



ROOF TOP AMENITY LIGHT FIXTURE LAYOUT
SCALE: 1/4" = 1'-0"

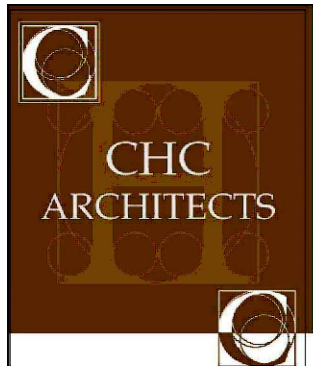
STATISTICS				
SYMBOL	AVERAGE	MAX.	MIN.	AVG./MIN.
+	5.2 fc	7.5 fc	1.1 fc	4.7:1

LIGHTING FIXTURE SCHEDULE					
DESIGNATION	DESCRIPTION	LAMPS	MOUNTING	MANUFACTURER	VA
COMMON AREA LIGHTING FIXTURES					
D	BOLLARD 42" x 6", BUG: B0-U1-G0, WET RATED	LED 424 LUMENS 3000K	FLOOR	HELIO BOLLARD SERIES 600 LBHLO-603	40
E	PATHWAY BOLLARD 9.75" x 6", BUG: B1-U3-G1, WET RATED	LED 886 LUMENS 3000K	FLOOR	FORMS + SURFACES LIGHT COLUMN PATHWAY BOLLARD SERIES 500	14
F	SPOT AND FLOOD LIGHT, LANDSCAPING ACCENTS" MINI MR16, 12V LAMP, 9-15V AC, WET RATED	LED 680 LUMENS 3000K	GRADE	KIRCHLER COPPER ACCENT LIGHT	35



ROOF TOP LIGHTING HEAT MAP
SCALE: NOT TO SCALE

CITY STAMP



13301 SE 79th PL, Unit A205, NEWCASTLE, WA 98059
(M) 425.765.3992 chcarch@gmail.com



Electrical Consultants, Inc.
19015 36th Avenue West, Suite E
Lynnwood, Washington 98036
Phone (425) 775-1799 FAX (425) 774-9870

1038 MIXED USE PROJECT
1040 SOUTH KING STREET
SEATTLE WA 98104

NUMBER	DATE	DESCRIPTION OF REVISIONS
---	03-28-2021	BUILDING PERMIT SET SUBMITTAL
---	---	---
---	---	---
---	---	---

SHEET NAME
ROOF TOP AMENITY
LIGHTING PLAN

SHEET NUMBER

E1.02

