

Ballard Ave NW & 20th Ave NW Intersection Refinements

Certificate of Approval Application

Record: DONH-COA-00863

Ballard Avenue Landmark District

Aditi Kambuj and Ian Macek
SDOT Urban Design
April 2023



Seattle
Department of
Transportation



Contents

1. Project Description
2. Concept Plan
3. Layout Plan
4. Location Photos
5. Planter and Striping Information

DRAFT

The revisions to the interim striping at Ballard Ave and 20th Ave intersection stem from the need to reopen the closed ADA curb ramp at the NE corner.

The project design responds to feedback heard during community engagement (community survey and design charrette) in the fall of 2022 to slow traffic, create intuitive pedestrian crossings, and improve visibility at the intersection. A site test was also conducted with large vehicles to ensure the design accommodates their movements.

The project includes two possible options comprising of the following "interim" refinements (see drawings on the following pages):

- Revise an existing curb bulb.
- Establish a new interim curb bulb
- Realign an existing stop sign to align with curb bulb refinements
- Remove one parking space on south west corner to improve visibility
- Relocate planters to align with revised interim curb bulbs
- Open Curb Ramp and remove crosswalk closure signs
- Install one new marked crosswalk and two crossing signs (Option A)

Option B excludes a new marked crosswalk and the related crossing signs, but includes all other elements noted above.

Any existing markings that are proposed to be removed will be done so using non-invasive techniques to minimize any potential impact to the brick.

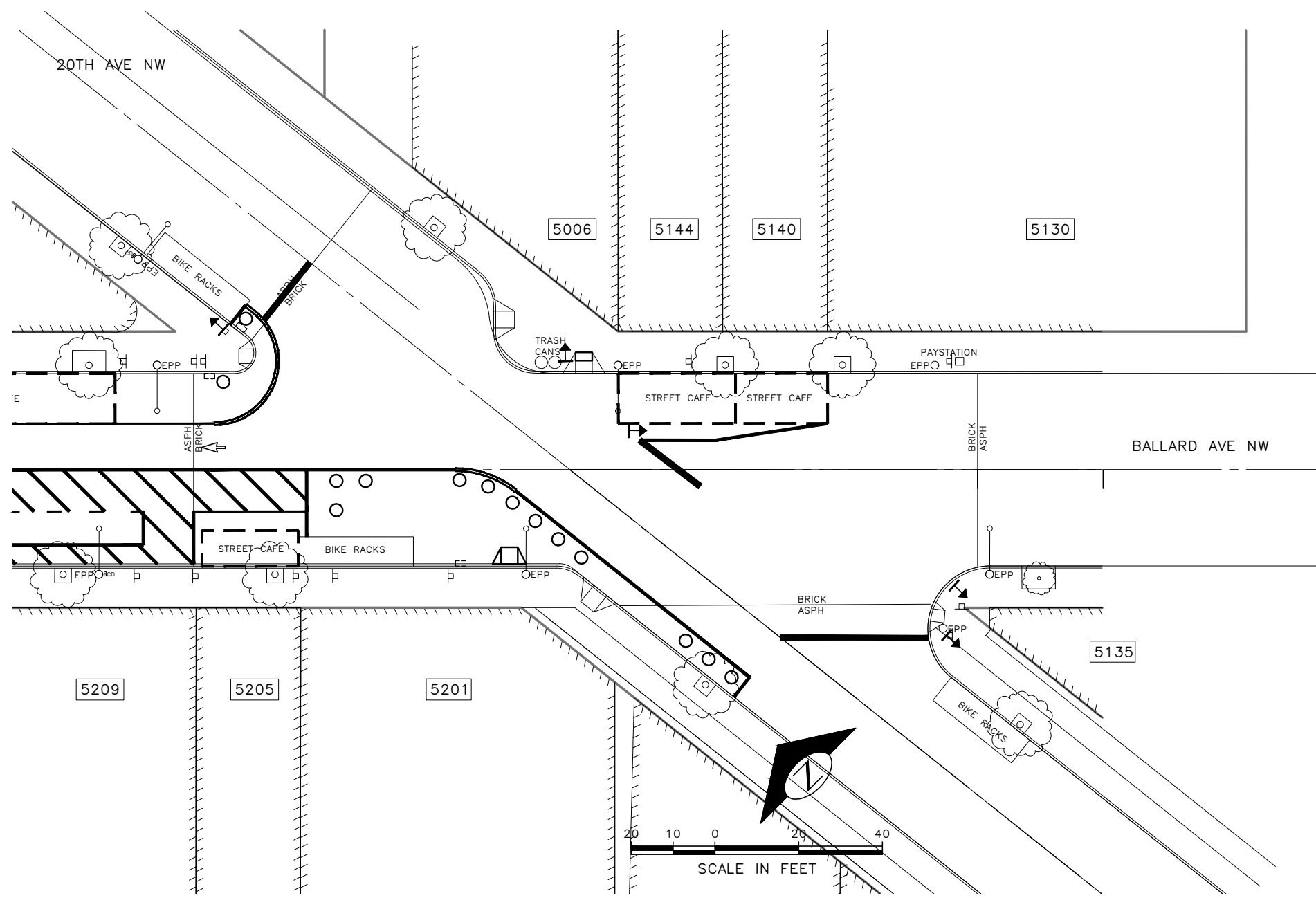


Temporary curb ramp closure

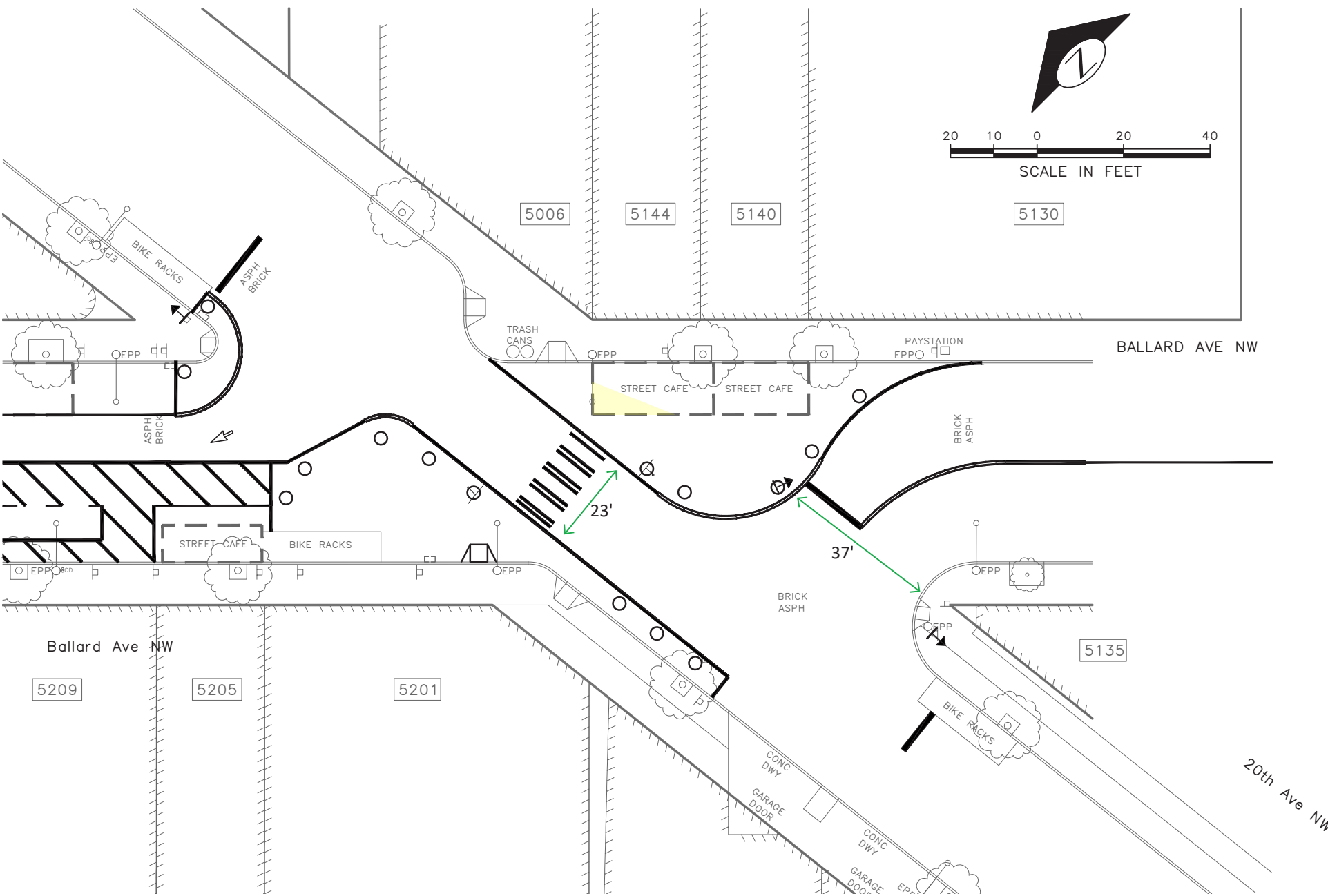


Photos of the site test held in early
February 2022

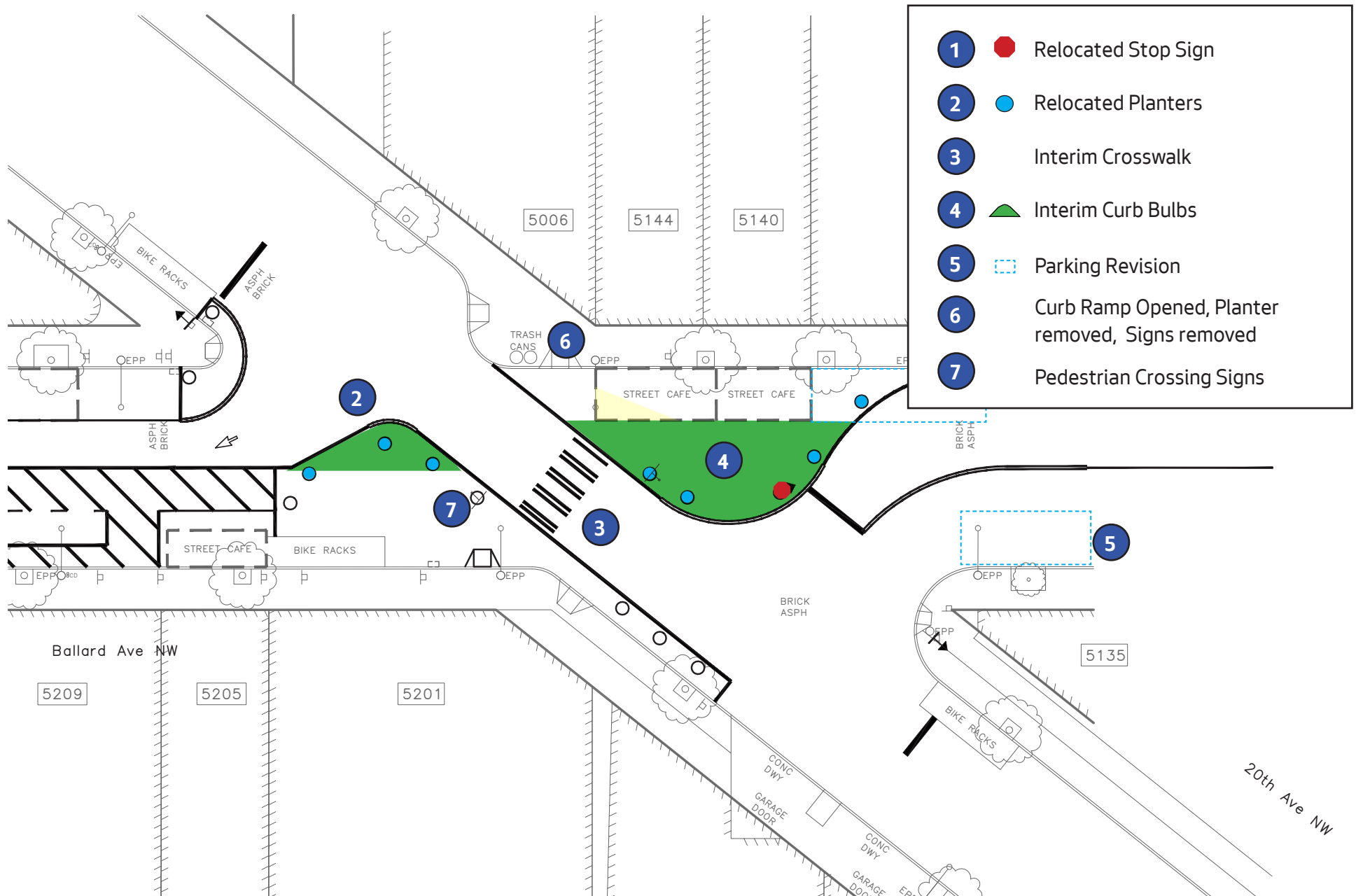
Existing Layout



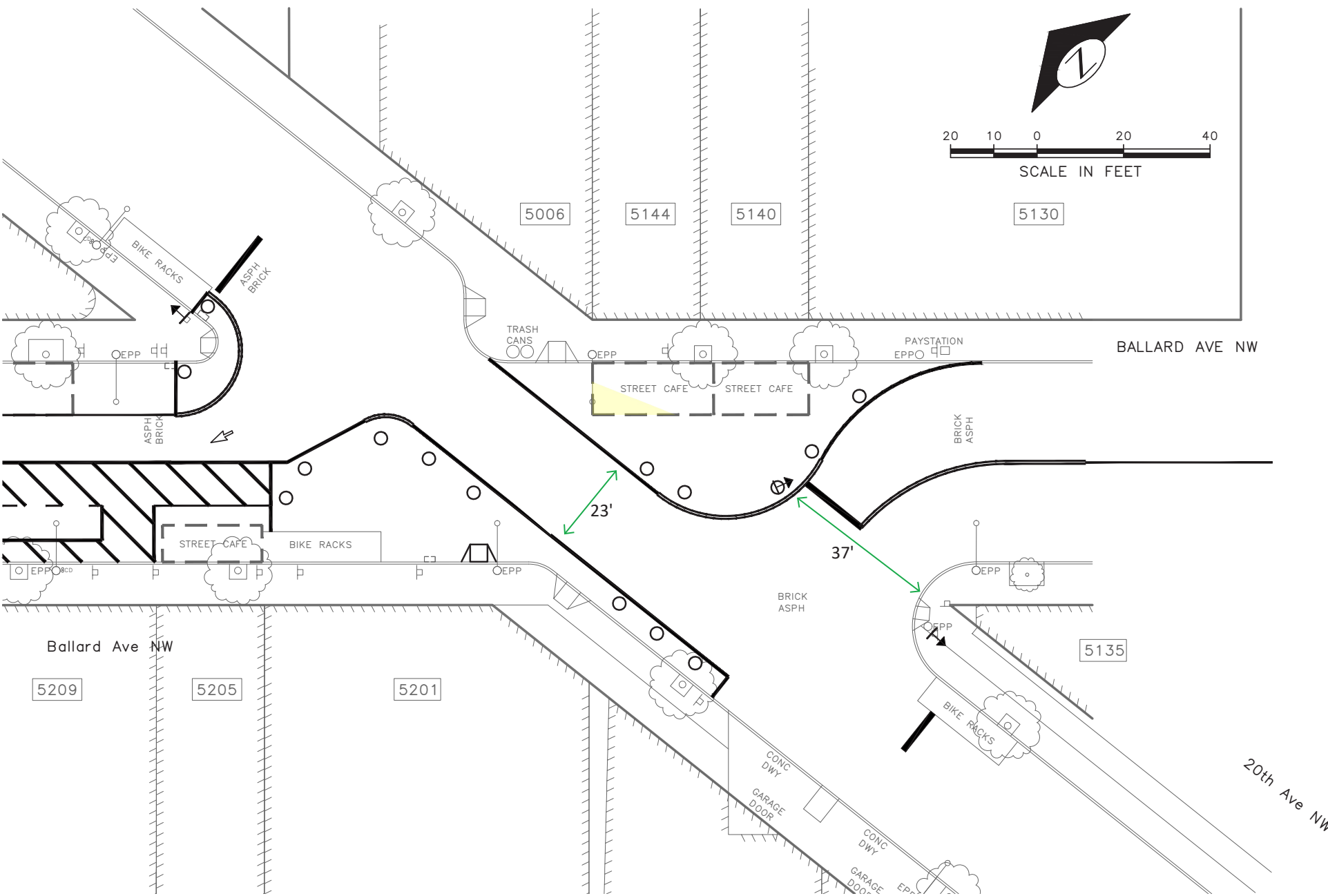
Proposed Intersection Layout (Option A - with marked crosswalk)



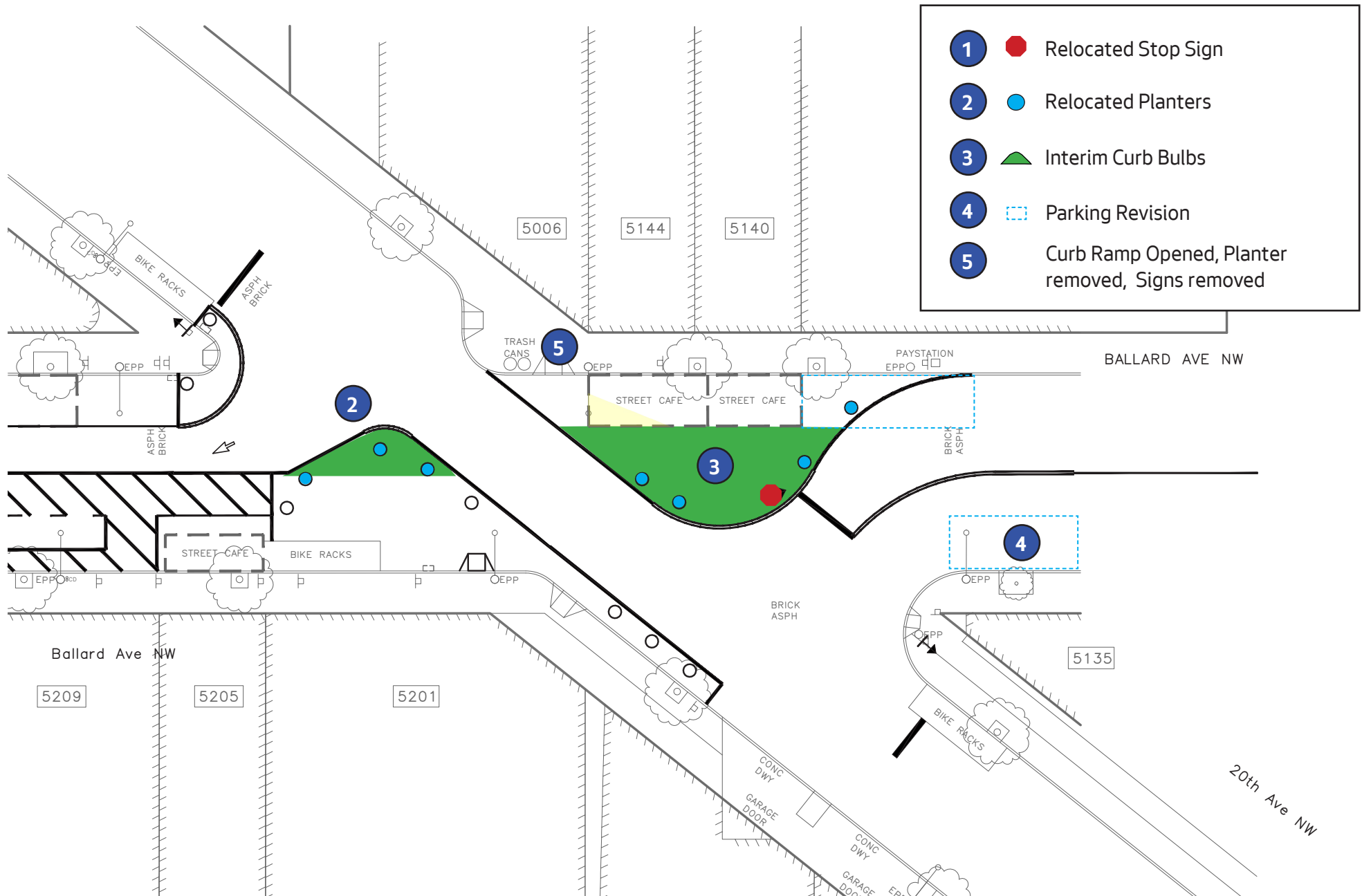
Proposed Changes - highlighted (Option A - with marked crosswalk)



Proposed Intersection Layout - Option B (without marked crosswalk)



Proposed Changes - highlighted (Option B - without marked crosswalk)



Location Photos



Looking North on 20th Ave NW



Looking North, crosswalk closure



Looking South on Ballard Ave NW



Looking across the intersection towards Lock and Keel



Existing bulb on SW corner adjacent to Steele Barber



Temporary curb ramp



Existing curb ramp closure next to Lock and Keel

Existing Planters - proposed to be relocated



Sybertech Self Watering Planter 36" Diameter

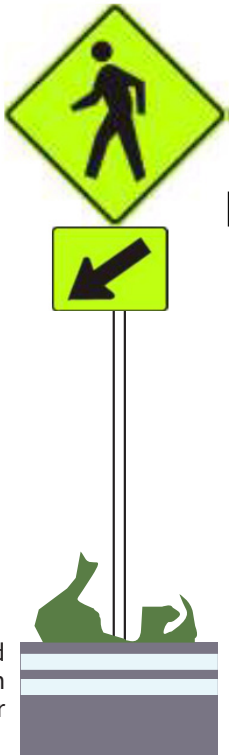
Crosswalk and Markings



Standard Ladder Style Crosswalk



Typical Edge Marking



Option A: Proposed
Crosswalk Sign in
planter