

SPOONFULL THAI KITCHEN & BAR



SPOONFULL'S CURBSIDE PERGOLA

5210 BALLARD AVENUE NW

SEATTLE DEPARTMENT OF NEIGHBORHOODS / BALLARD AVENUE LANDMARK DISTRICT BOARD

SPOONFULL THAI KITCHEN & BAR

5210 BALLARD AVE NW
SEATTLE, WA 98107

1. 11.11.24 Revision
2. 21.11.24 Revision

Issue
SCALE: AS NOTED

COVER
Sheet Title

A0.0
Sheet



FRONT PERGOLA : VIEW OF BUILDING FROM BALLARD AVENUE
SCALE: NOT TO SCALE



REAR PERGOLA : VIEW OF BUILDING FROM 20TH AVENUE
SCALE: NOT TO SCALE



- NOTES
1. PERGOLA PLANS, ELEVATIONS AND SECTION DRAWINGS ARE SCHEMATIC DESIGN LEVEL ONLY AND HAVE NOT BEEN EVALUATED FOR STRUCTURAL DESIGN
 2. STRUCTURAL ENGINEERING & CONSTRUCTION OF PERGOLA BY OTHERS

TABLE OF CONTENTS

- A1.0 VIEW FROM BALLARD AVENUE
VIEW FROM 20TH AVENUE
A2.0 SITE PLAN
A3.0 FRONT PERGOLA (BALLARD AVENUE)
A4.0 REAR PERGOLA (20TH AVENUE)
A5.0 PERSPECTIVE
A6.0 SECTION AND DETAIL
A7.0 MATERIAL
A8.0 MATERIAL

TOTAL 8 SHEETS

SPOONFULL THAI KITCHEN & BAR

5210 BALLARD AVE NW
SEATTLE, WA 98107

1. 11.11.24 Revision

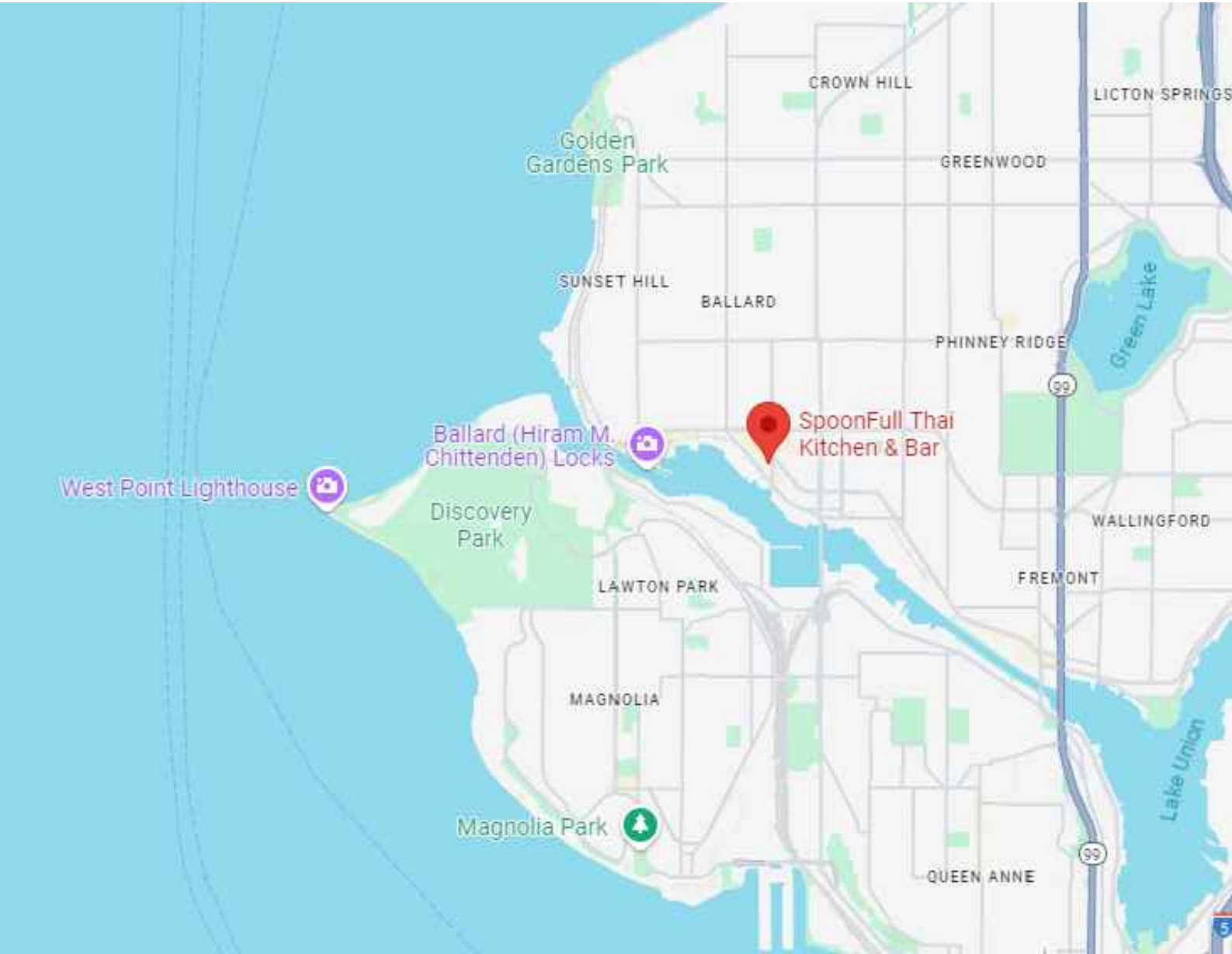
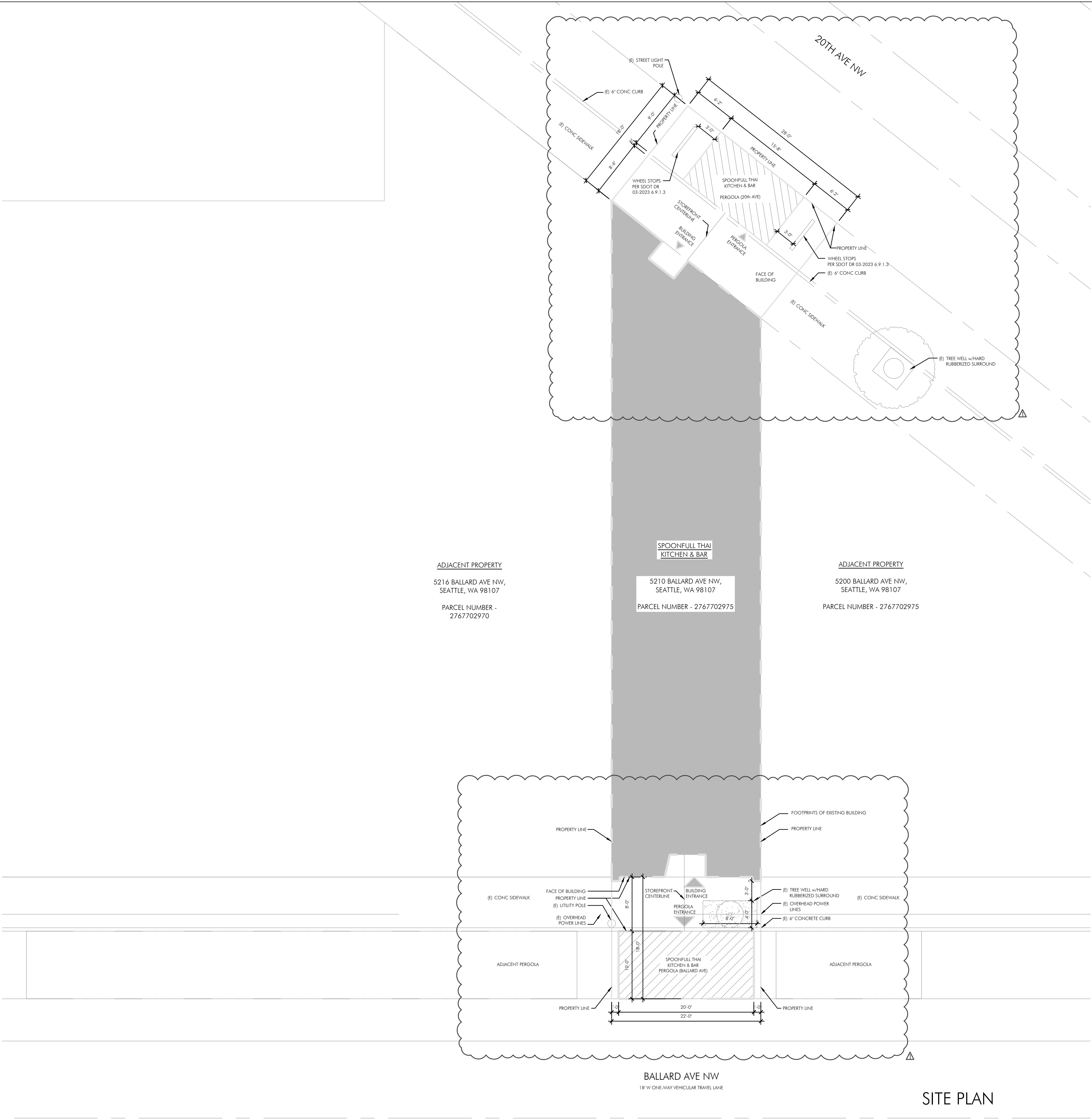
Issue
SCALE: AS NOTED

VIEW FROM
BALLARD AVENUE

VIEW FROM
20TH AVENUE

Sheet Title

A1.0
Sheet



SPOONFULL THAI KITCHEN & BAR

5210 BALLARD AVE NW
SEATTLE, WA 98107

1. 11.11.24 Revision

Issue
SCALE: AS NOTED

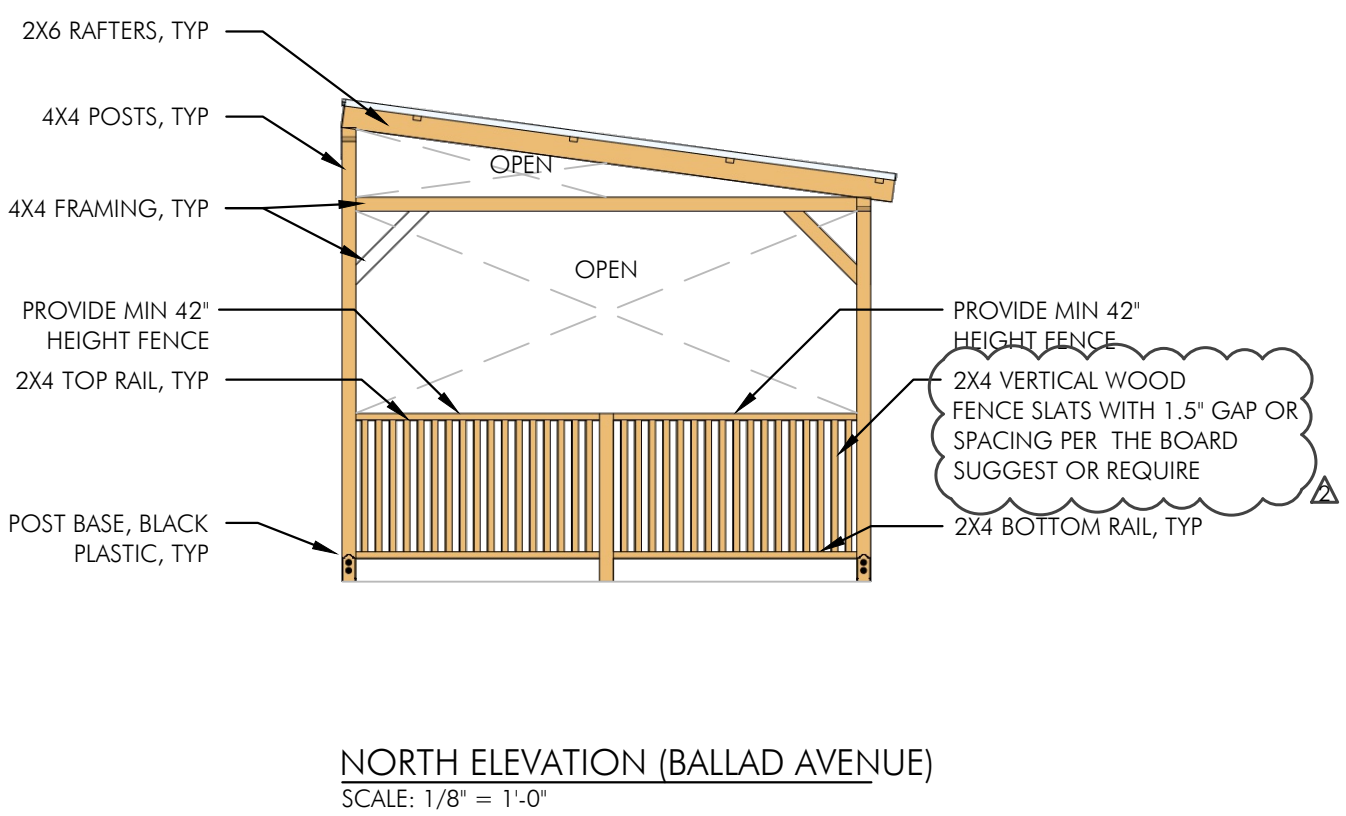
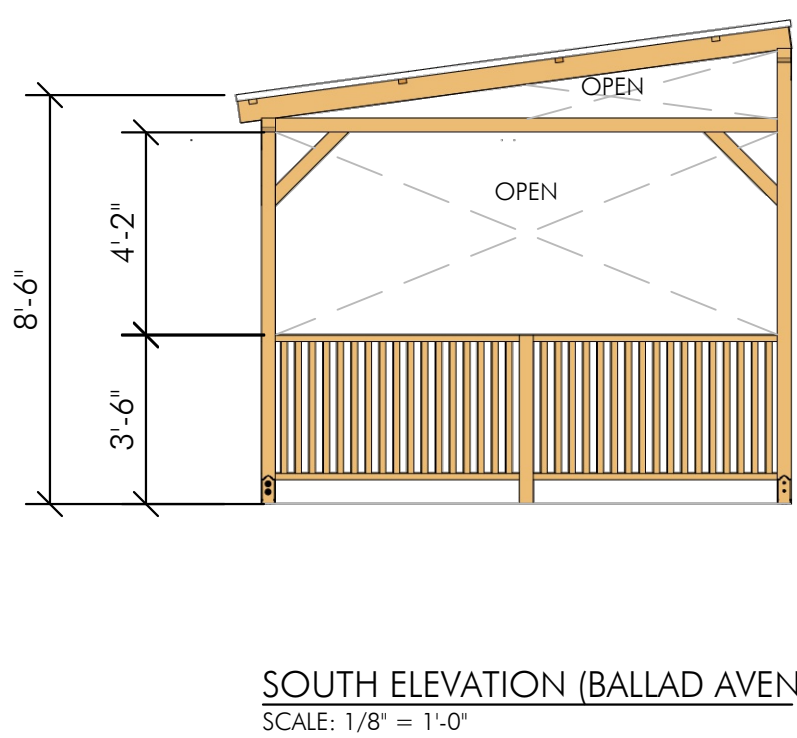
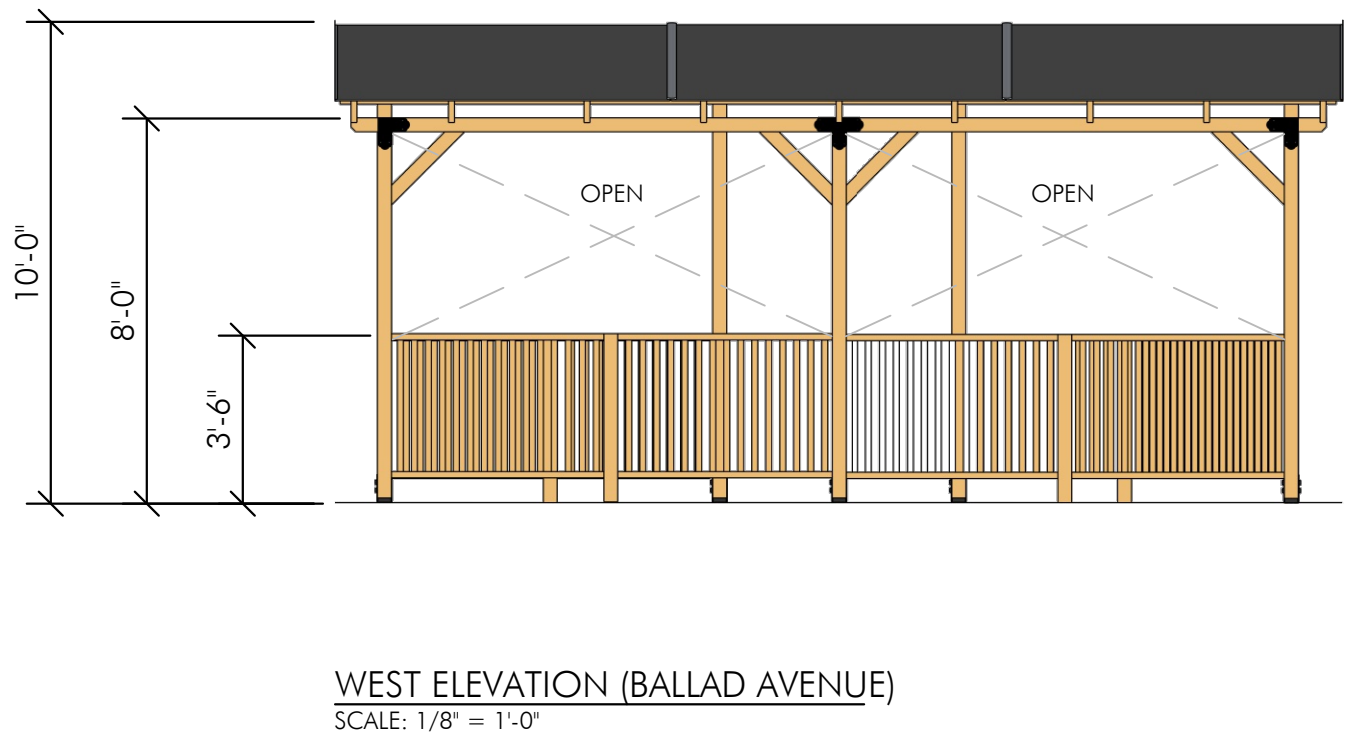
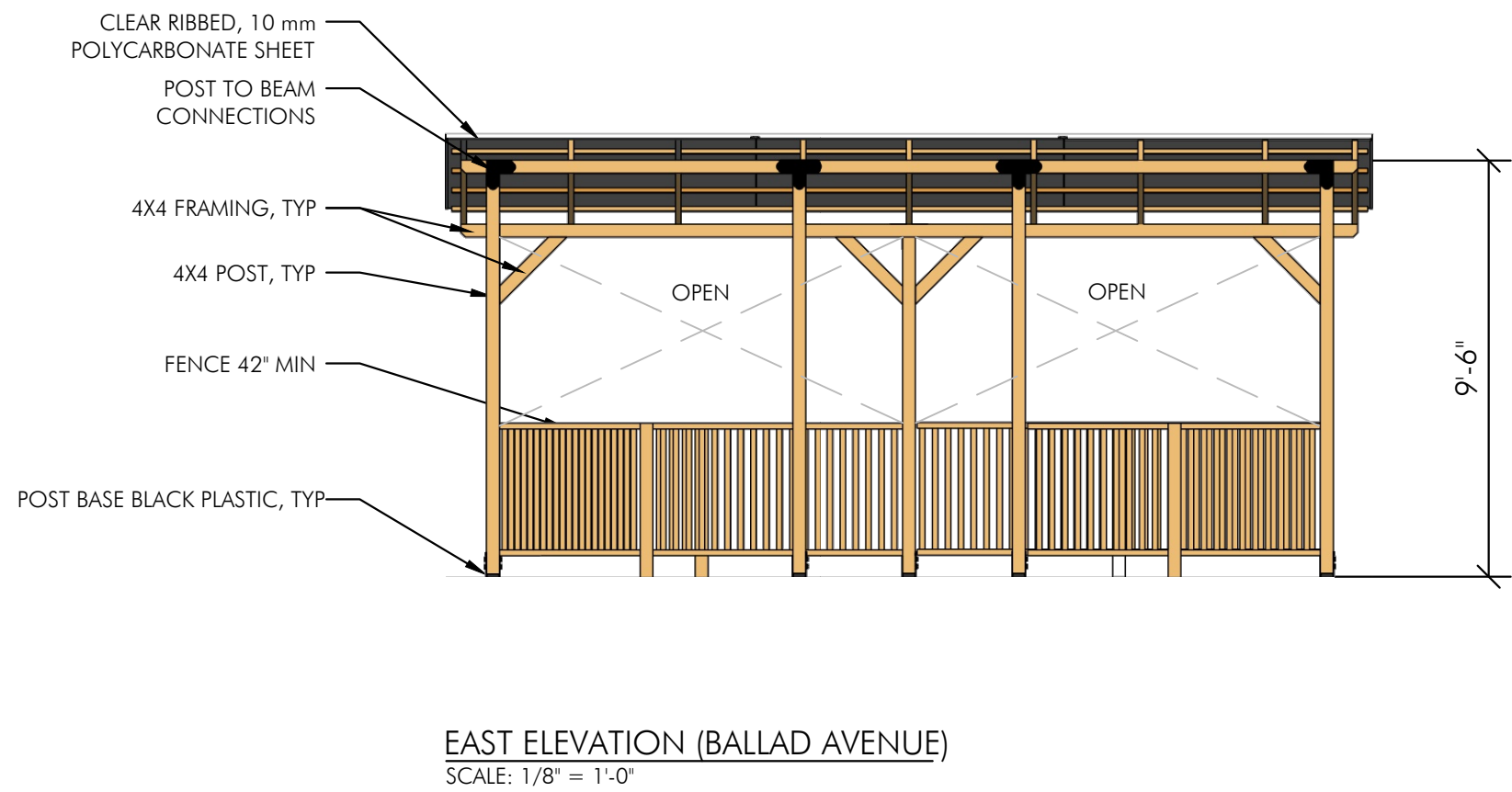
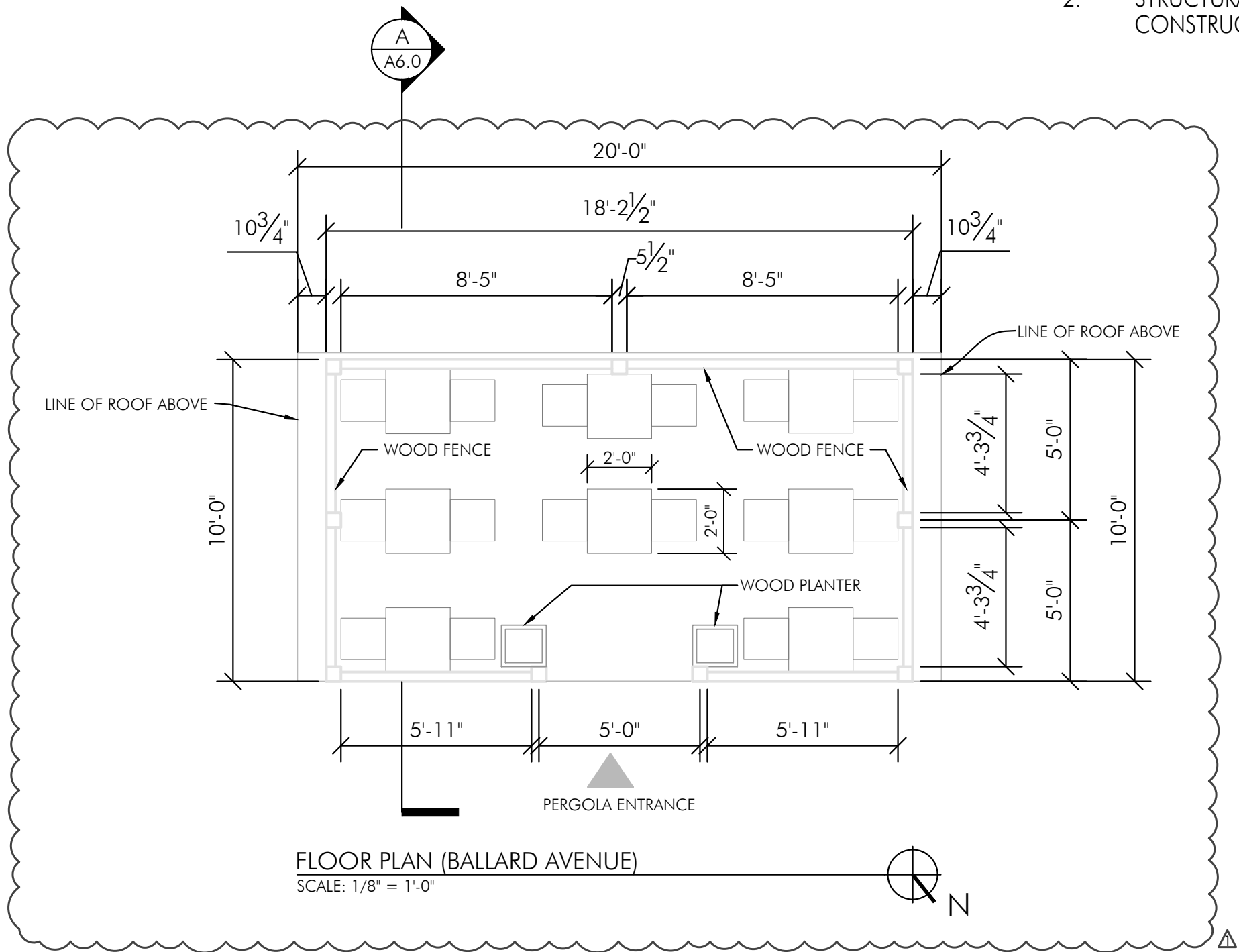
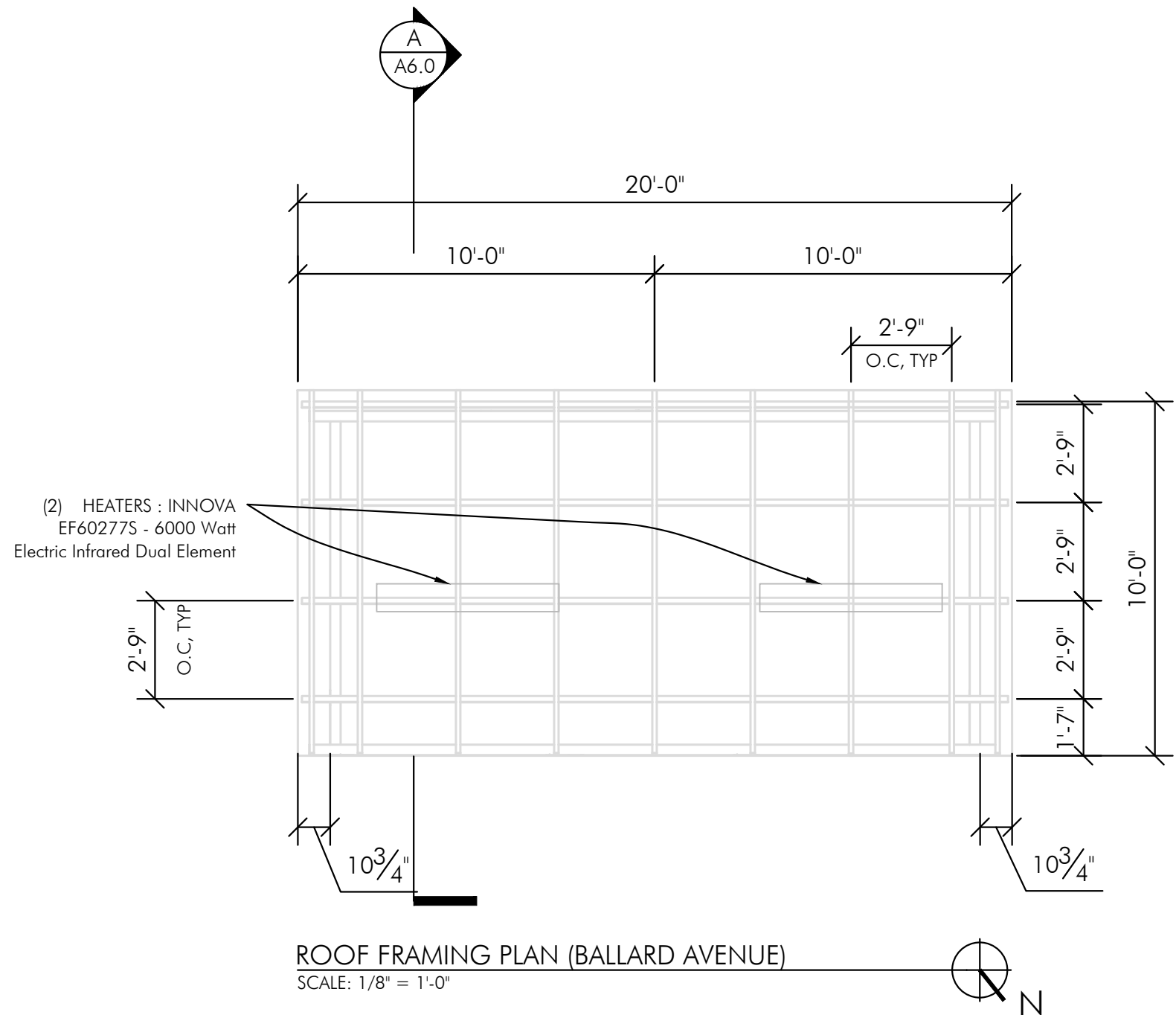
SITE PLAN

Sheet Title

A2.0

Sheet

- NOTES
- PERGOLA PLANS, ELEVATIONS AND SECTION DRAWINGS ARE SCHEMATIC DESIGN LEVEL ONLY AND HAVE NOT BEEN EVALUATED FOR STRUCTURAL DESIGN
 - STRUCTURAL ENGINEERING & CONSTRUCTION OF PERGOLA BY OTHERS



SPOONFULL THAI KITCHEN & BAR

5210 BALLARD AVE NW
SEATTLE, WA 98107

1.	11.11.24	Revision
2.	21.11.24	Revision

Issue
SCALE: AS NOTED

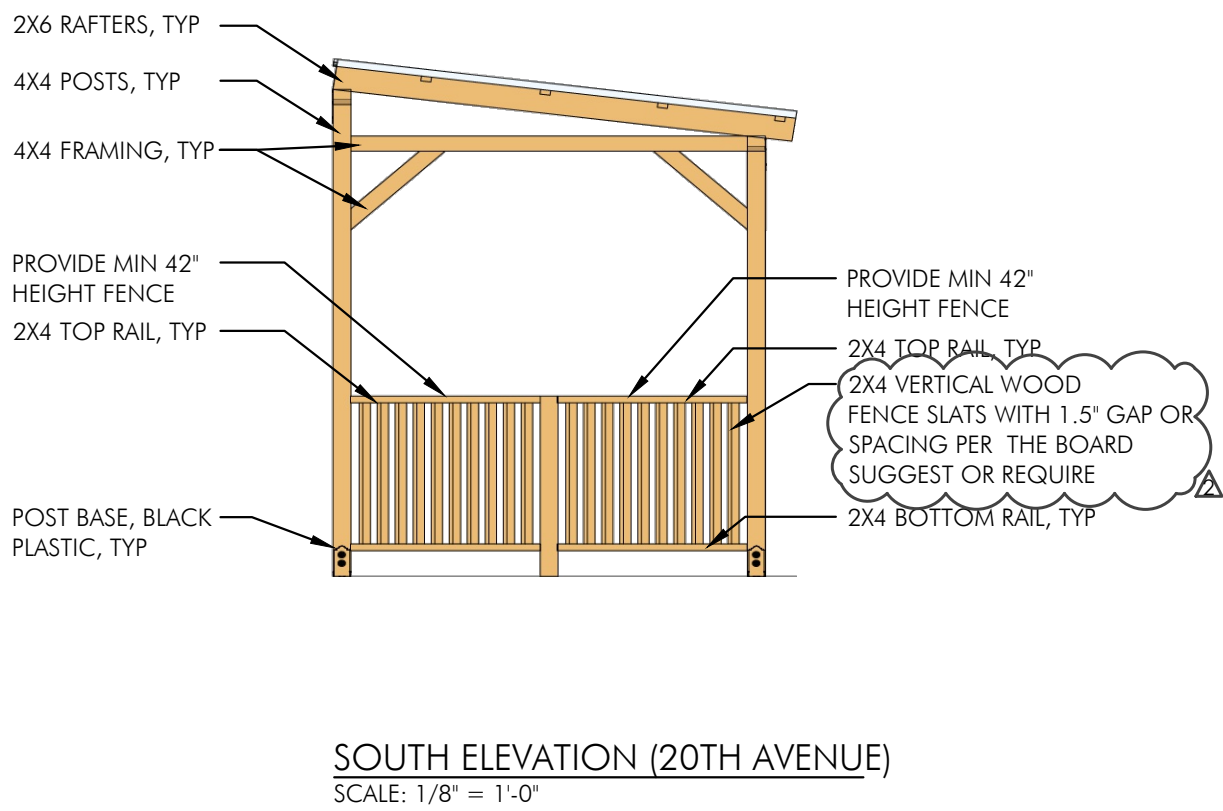
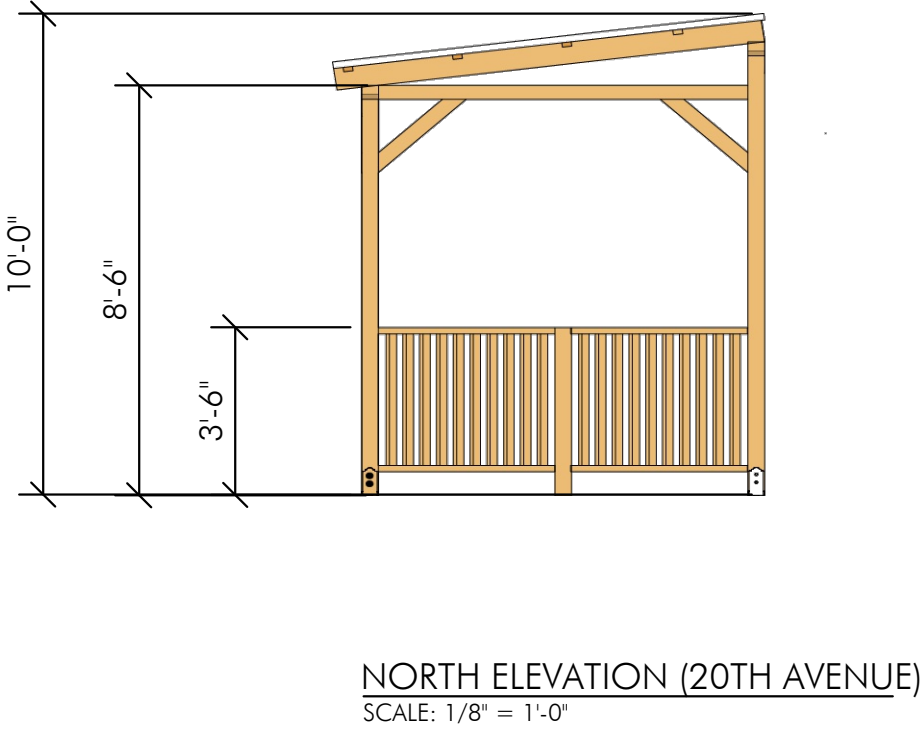
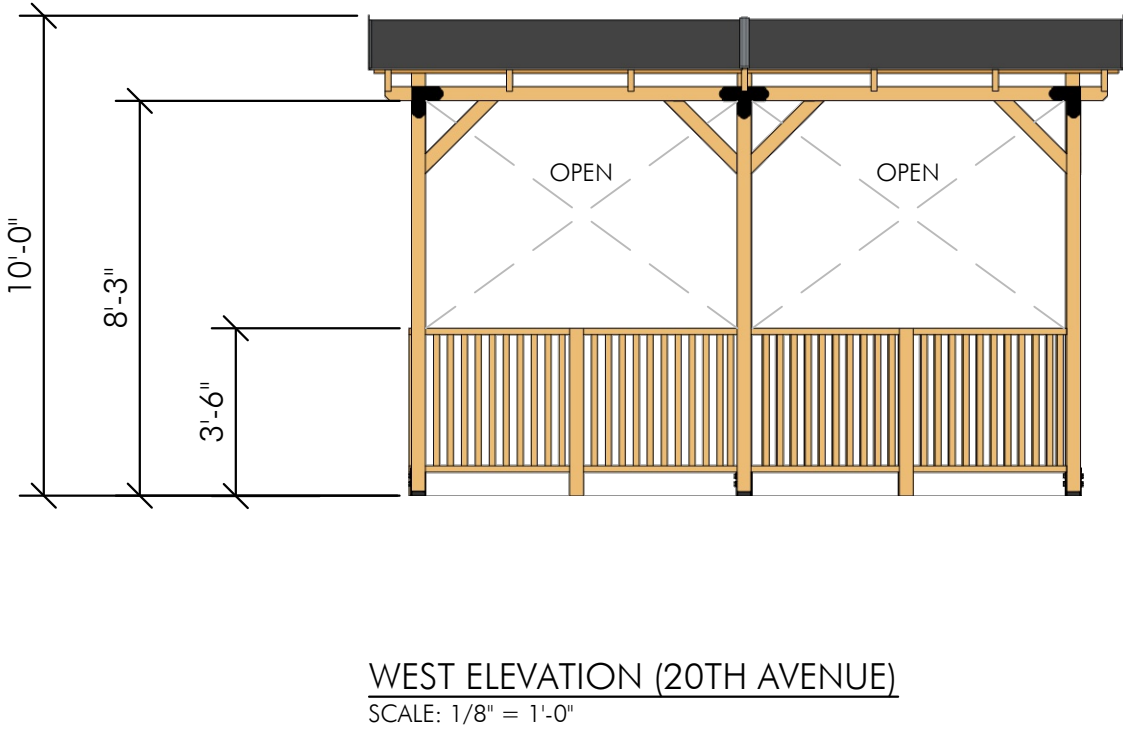
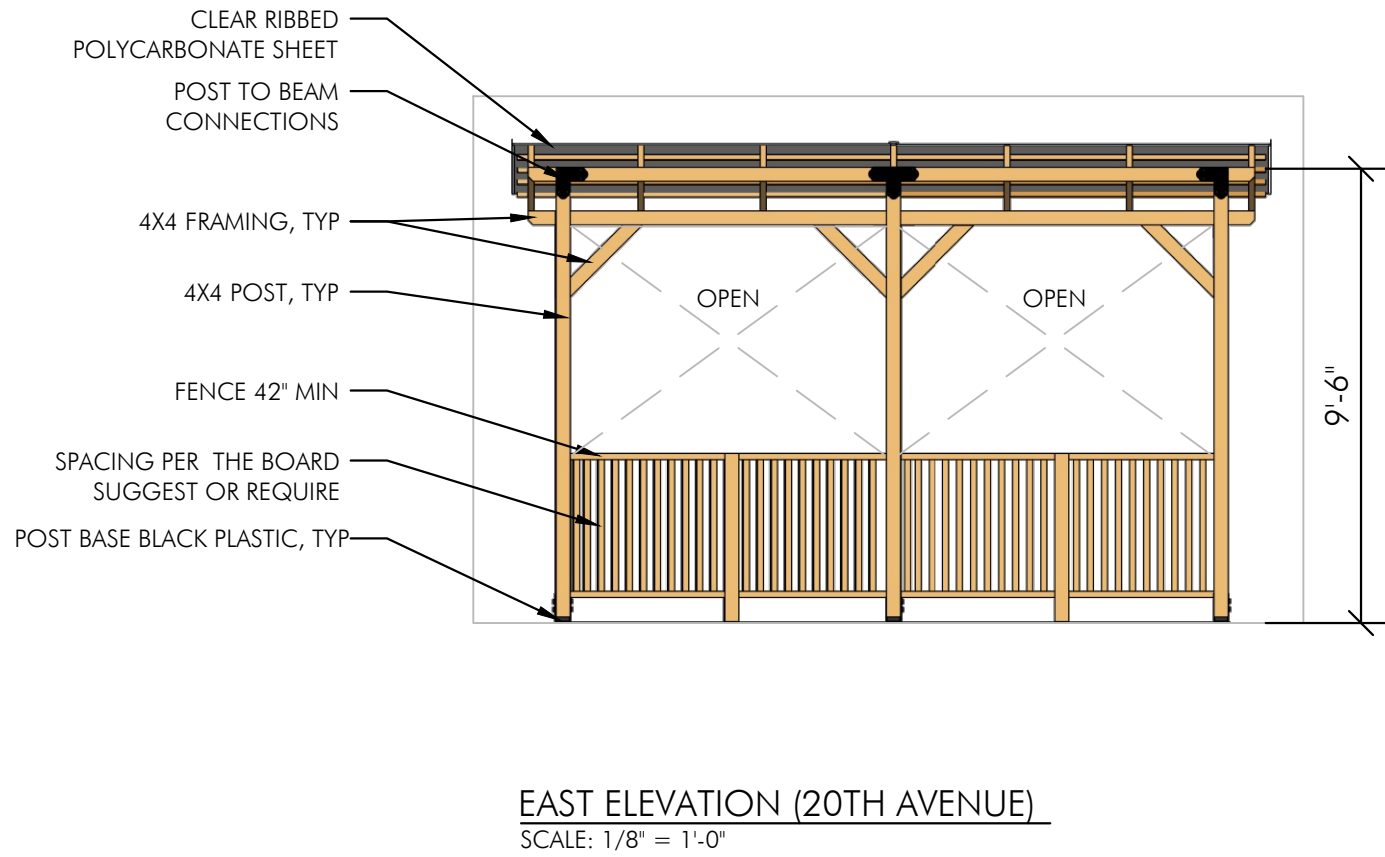
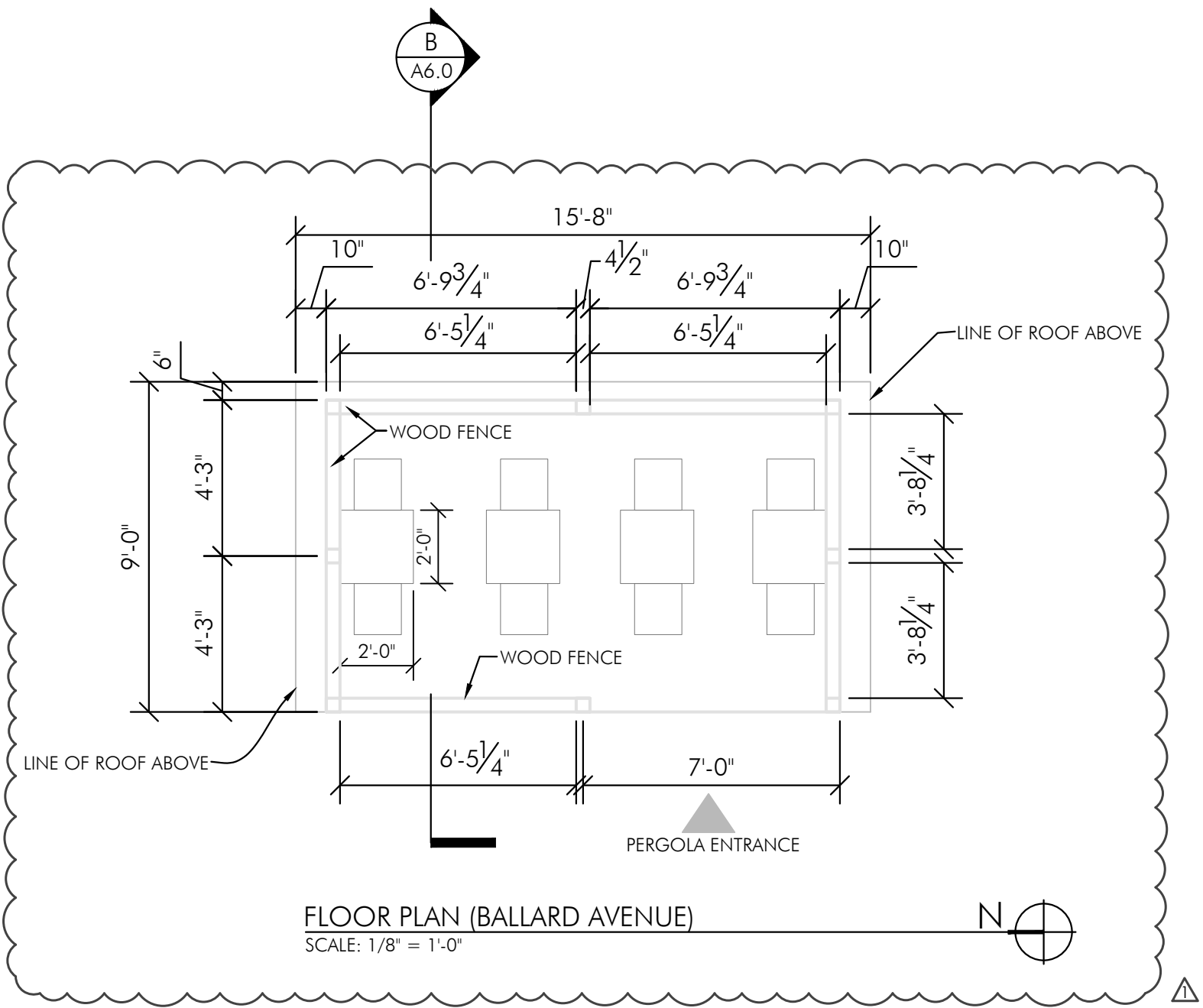
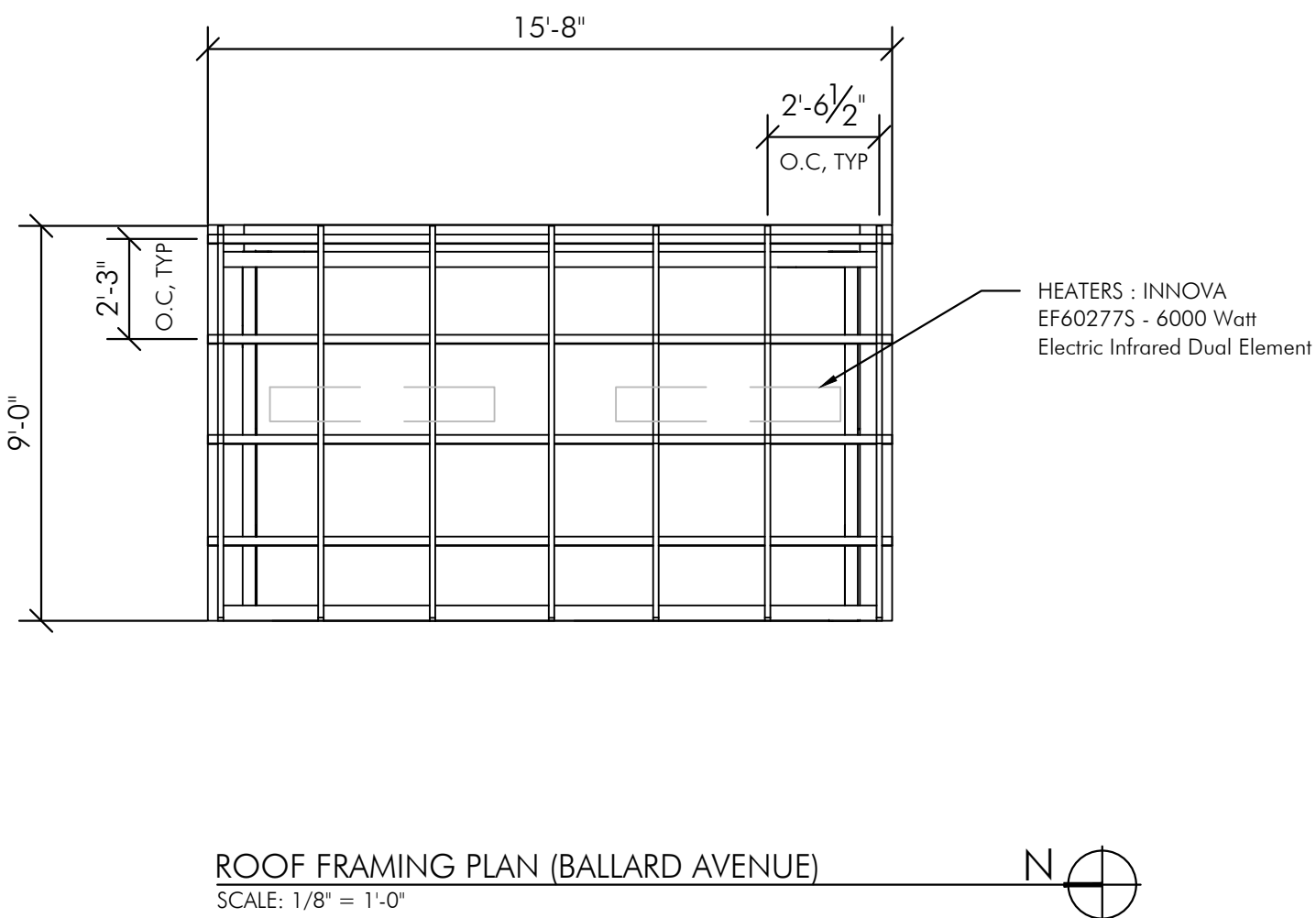
FRONT PERGOLA
(BALLARD AVENUE)
- FLOOR PLAN
- ELEVATION
- ROOF FRAMING
PLAN
Sheet Title

A3.0
Sheet

- NOTES
1.

PERGOLA PLANS, ELEVATIONS AND SECTION DRAWINGS ARE SCHEMATIC DESIGN LEVEL ONLY AND HAVE NOT BEEN EVALUATED FOR STRUCTURAL DESIGN
2.

STRUCTURAL ENGINEERING & CONSTRUCTION OF PERGOLA BY OTHERS



SPOONFULL THAI KITCHEN & BAR

5210 BALLARD AVE NW
SEATTLE, WA 98107

1.	11.11.24	Revision	Δ
2.	21.11.24	Revision	Δ

Issue

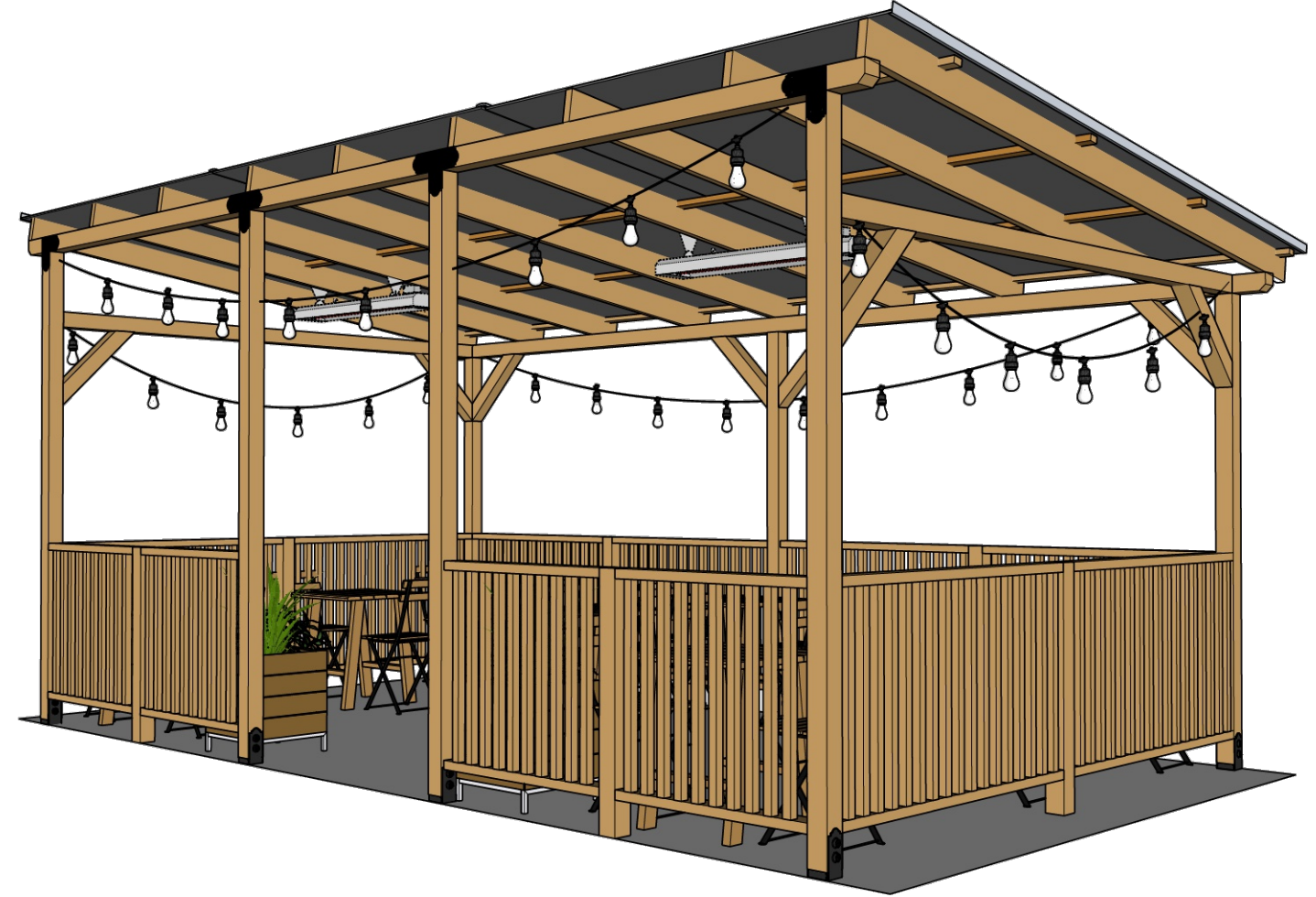
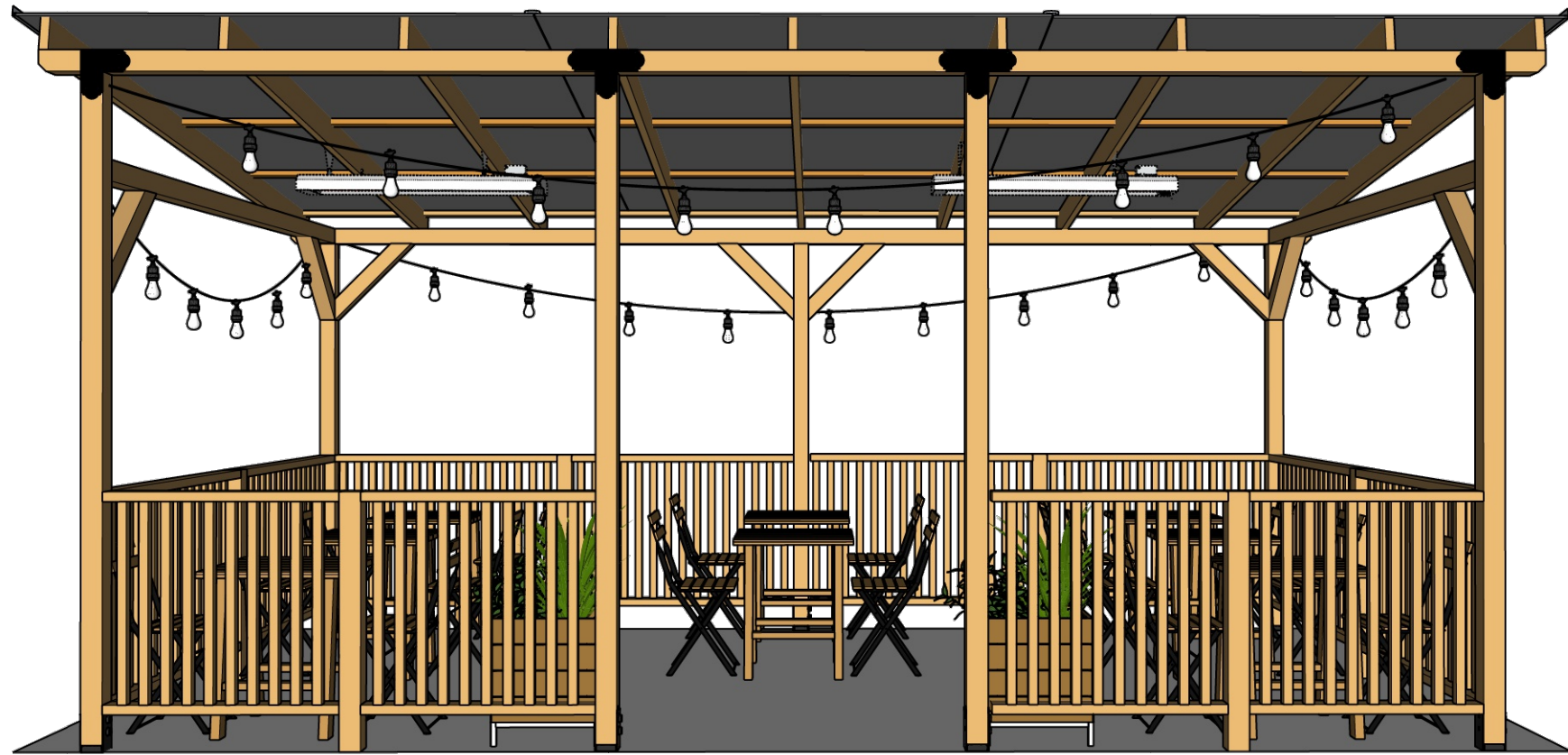
SCALE: AS NOTED

REAR PERGOLA
(20TH AVENUE)
- FLOOR PLAN
- ELEVATION
- ROOF FRAMING
PLAN

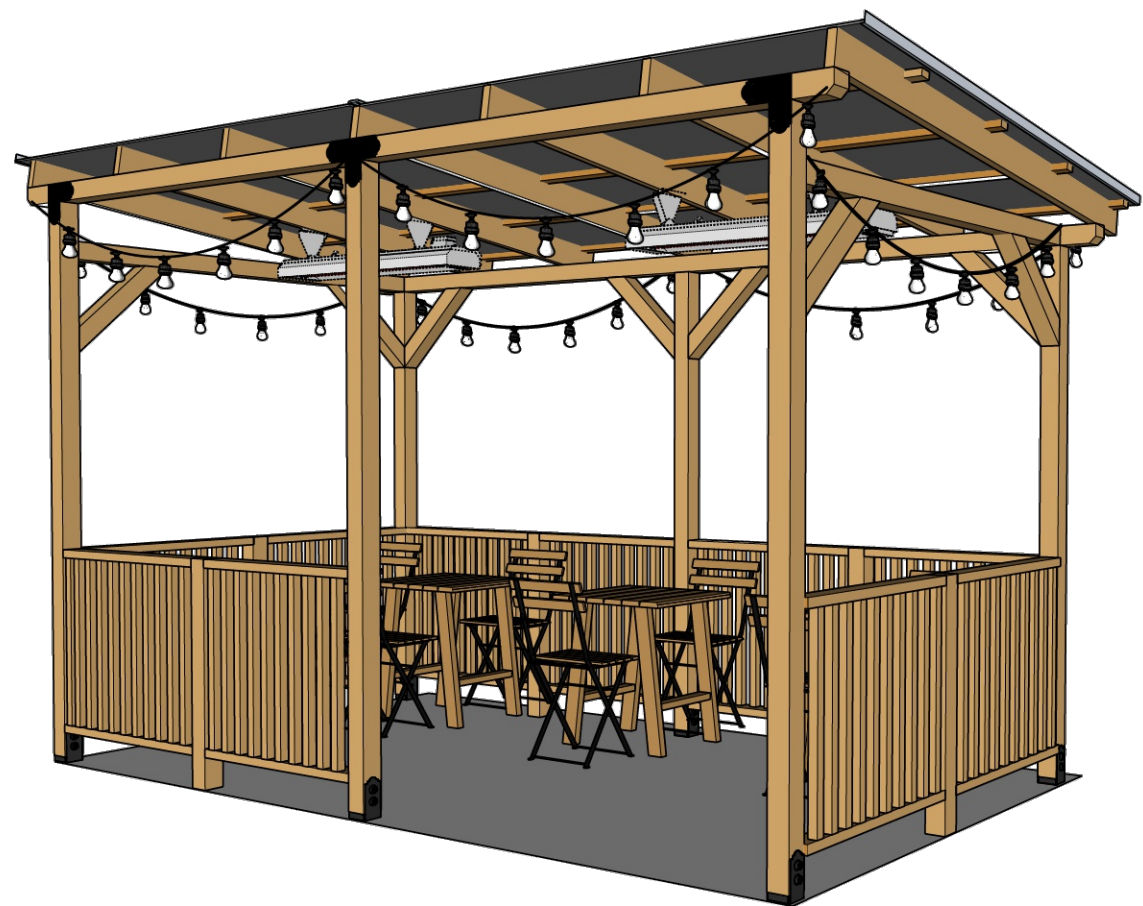
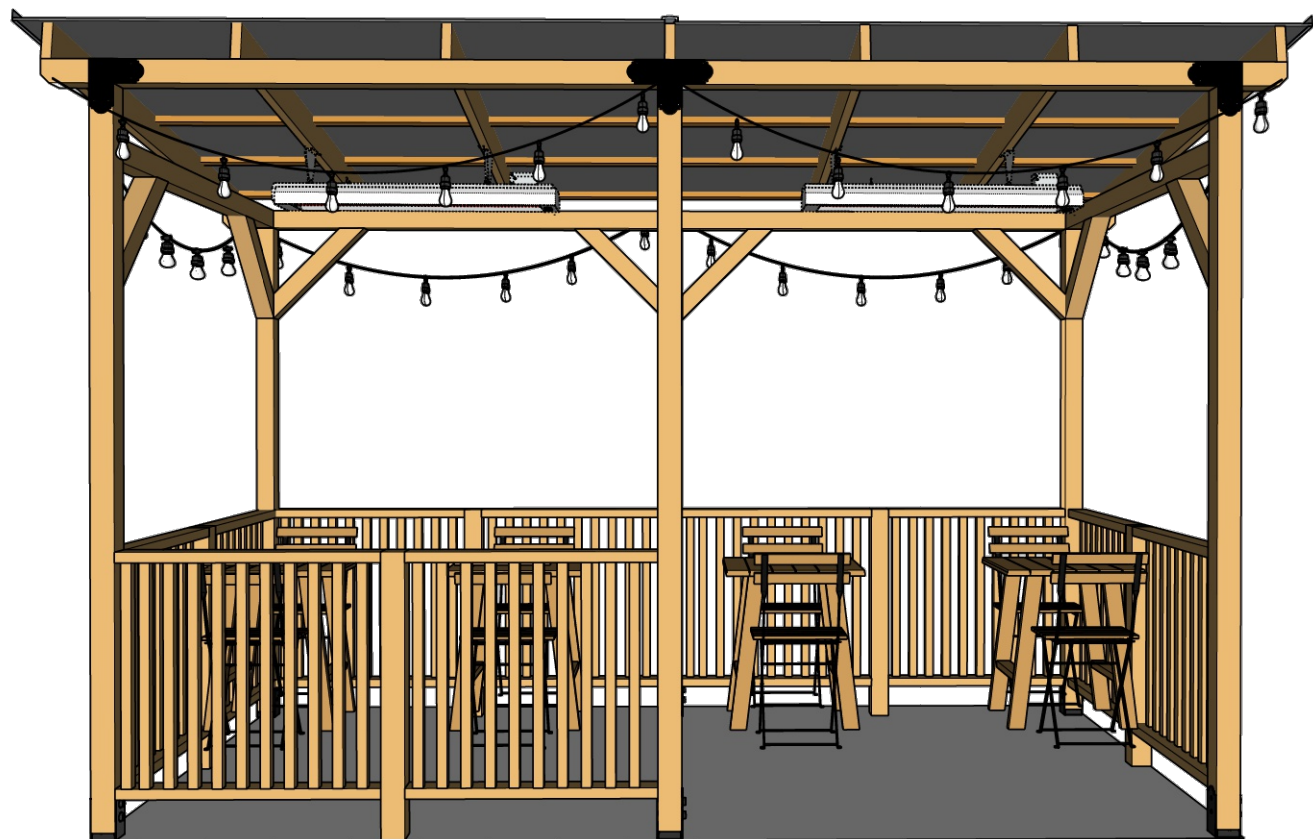
Sheet Title

A4.0

Sheet



PERSPECTIVE (BALLARD AVENUE)



PERSPECTIVE (20TH AVENUE)

SPOONFULL THAI KITCHEN & BAR

5210 BALLARD AVE NW
SEATTLE, WA 98107

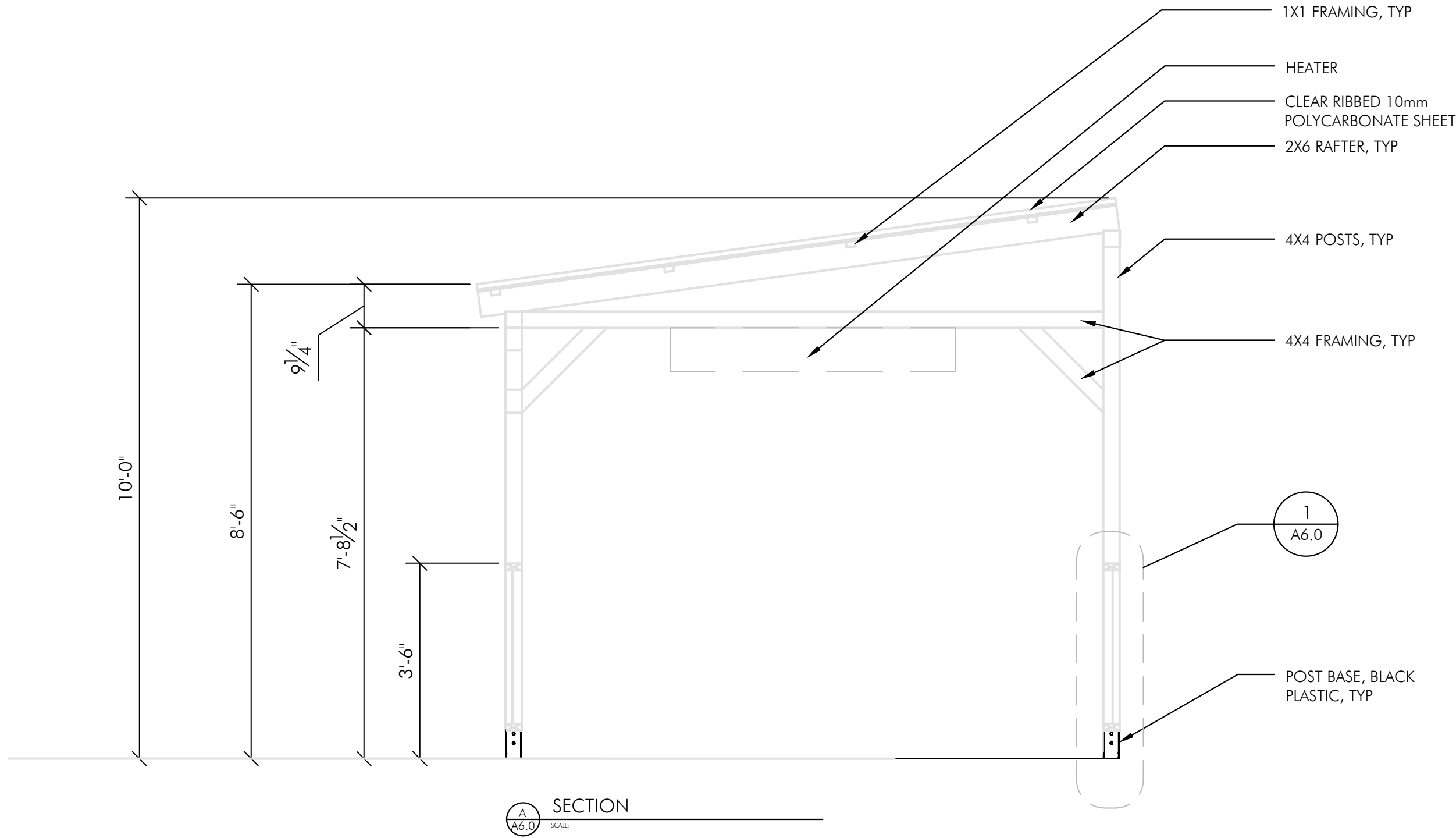
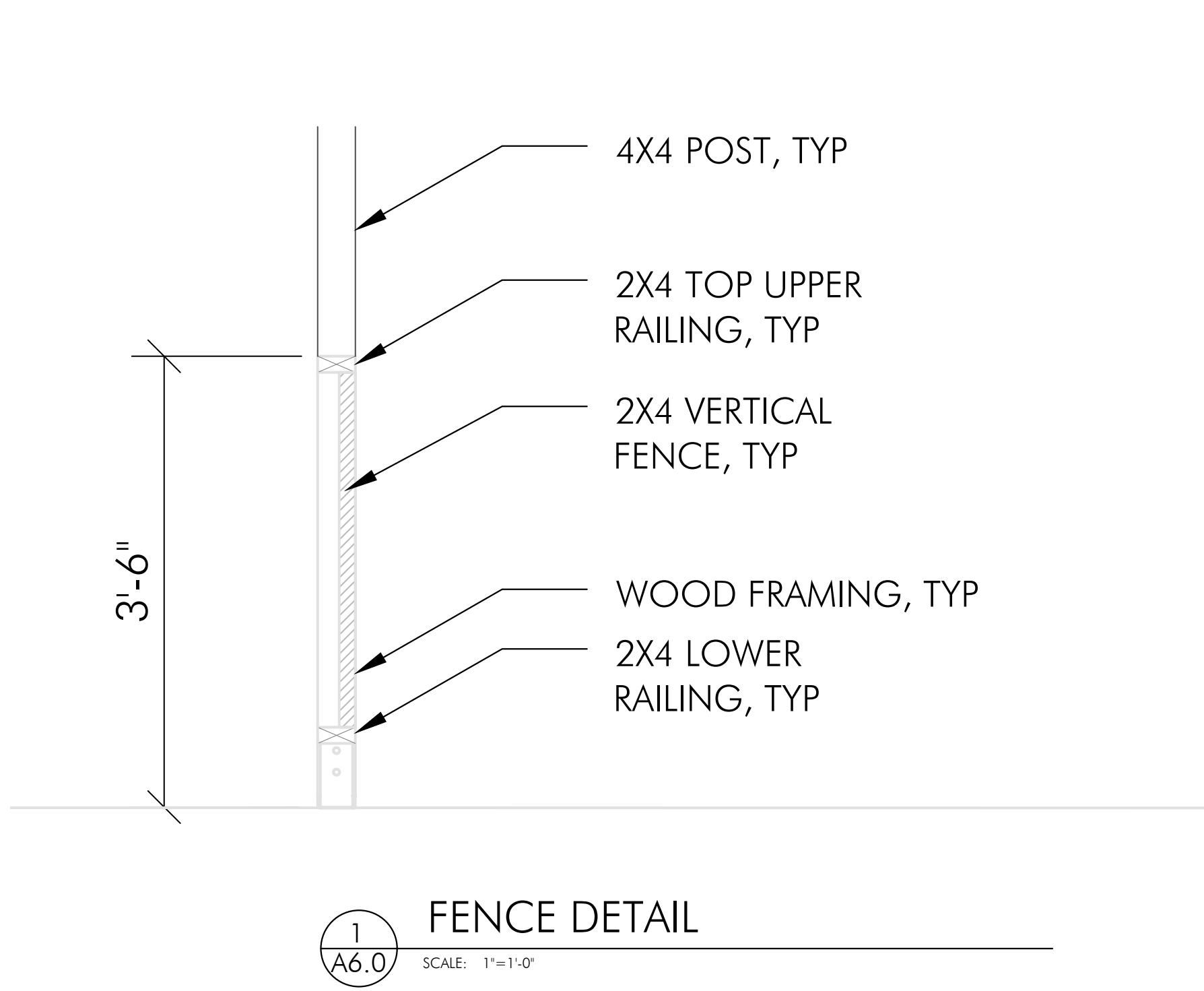
SCALE: AS NOTED

PERSPECTIVE

Sheet Title

A5.0

Sheet



SPOONFULL THAI KITCHEN & BAR

5210 BALLARD AVE NW
SEATTLE, WA 98107

SCALE: AS NOTED

SECTION & DETAIL

Sheet Title

A6.0

Sheet



ROOFING

LOCATION: ROOF
MANUFACTURER: PLASKOLITE
MODEL: POLYGAL TWINWALL
TYPE: ROOFING PANELS
SIZE: 48' x 96' PANELS, 10 mm THICK
MATERIAL: DOUBLE-WALL POLYCARBONATE SHEET
COLOR: CLEAR, RIBBED (79% LIGHT TRANSMITTANCE)
INSTALLATION: PANELS/RIBS SPAN FROM ROOF RIDGE TO ROOF EAVE, WITH BUTT-JOINTS AT PANEL EDGES. PANELS ARE SCREWED DIRECTLY TO THE PERGOLA'S ROOF STRUCTURAL MEMBERS WITH EXTERIOR-GRADE SCREWS AND BLACK NEOPRENE WASHERS.



POST BASE

LOCATION: AT BOTTOM OF EACH STRUCTURAL POST
MANUFACTURER: TBD
INSTALLATION: STRUCTURAL WOOD COLUMNS ARE INSERTED INTO THE POST BASES, THEN MECHANICALLY FASTENED TO THE BASES WITH BLACK STAINLESS STEEL SCREWS. BASES ARE THEN MECHANICALLY FASTENED TO THE GROUND.
CONNECTION: - USE SIMPSON 1/4" Ø x 5' TITEN HD ANCHOR ON OPPOSITE SIDES OF POST (2 TOTAL PER POST)



HEATER

LOCATION: AT PERGOLA CEILING (2)
MANUFACTURER: INNOVA HEATING CO.
MODEL: EF50208
SIZE: 40"W x 8"D x 9"H
INSTALLATION: HUNG FROM PERGOLA CEILING BY METAL HOOKS.



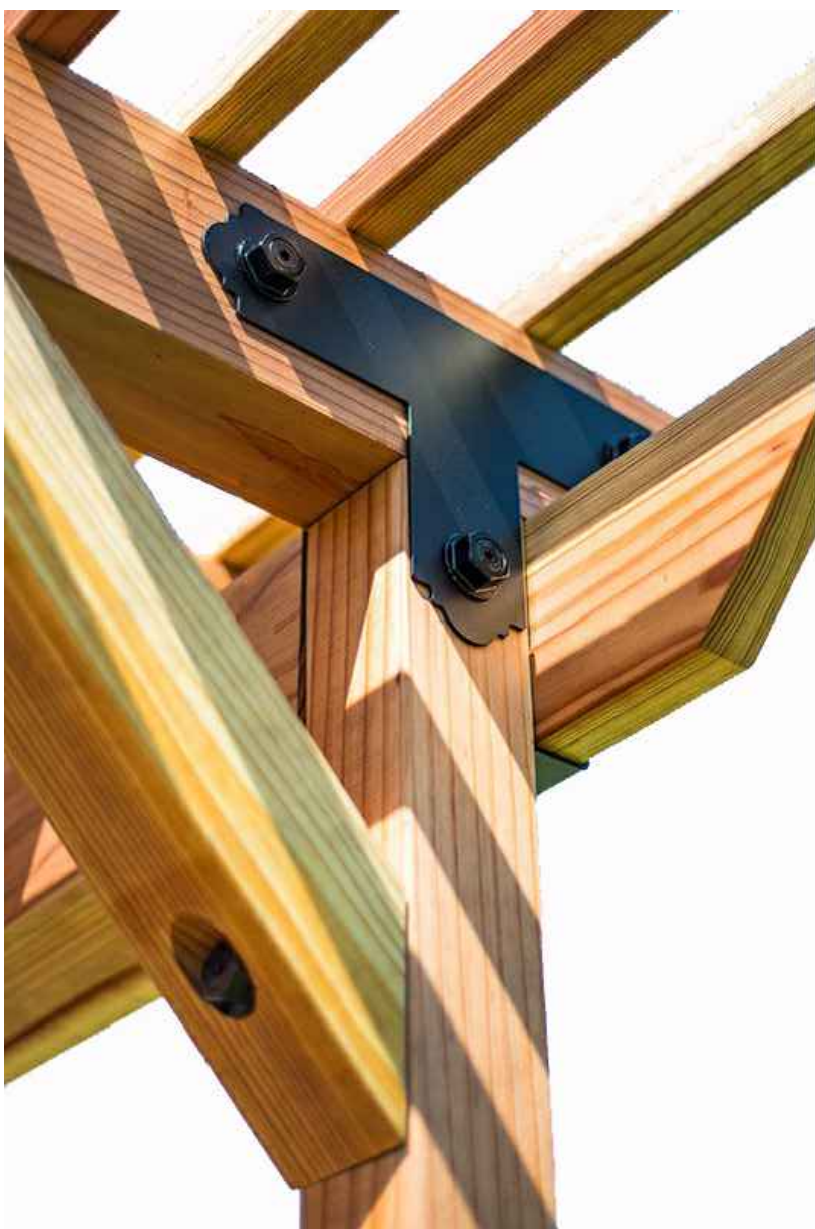
FRAMING LUMBER

LOCATION: PERGOLA ROOF STRUCTURE, STRUCTURAL POSTS, FENCE
SIZE: 2X4, 2X6, 4X4
MATERIAL: DOUGLAS FIR
COLOR: APPEARANCE GRADE STRUCTURE W/CLEAR FINISH ,NATURAL WOOD PER DON GUIDELINES
INSTALLATION: TYPICAL WOOD-FRAMING THROUGHOUT STRUCTURE, CONNECTED WITH GALVANIZED FRAMING NAILS AND BLACK STRUCTURAL PLATE CONNECTORS.



FESTOON LIGHTING

LOCATION: AT PERGOLA CEILING
MANUFACTURER: TBD
MODEL: TBD
SIZE: APPROXIMATELY 2" DIAMETER
INSTALLATION: HUNG FROM METAL HOOKS AT WOOD RAFTERS
MATERIAL: VINYL ELECTRICAL CABLE, PLASTIC LAMP BODIES, CLEAR BULBS
COLOR: BLACK ELECTRICAL CABLE, BLACK LAMPS CLEAR 2700K COLOR TEMP LED BLUBS
DESCRIPTION: FESTOON LIGHTING WITH CLEAR LED BULBS AND BLACK PLASTIC LAMPS SPACED AT 30" ALONG BLACK ELECTRICAL CABLE



STRUCTURAL FRAMING STRAP

LOCATION: POST-TO-BEAM CONNECTIONS
MANUFACTURER: SIMPSON STRONG-TIE
MODEL: APT-4 & APL-4
TYPE: FLAT T- AND L-STRAPS
INSTALLATION: FACE-APPLIED TO STRUCTURAL POSTS AND BEAMS, AND SCREWED TO STRUCTURAL MEMBERS WITH BLACK SCREWS.

SPOONFULL THAI KITCHEN & BAR

5210 BALLARD AVE NW
SEATTLE, WA 98107

1. 11.11.24 Revision
2. 21.11.24 Revision

Issue

SCALE: AS NOTED

MATERIAL

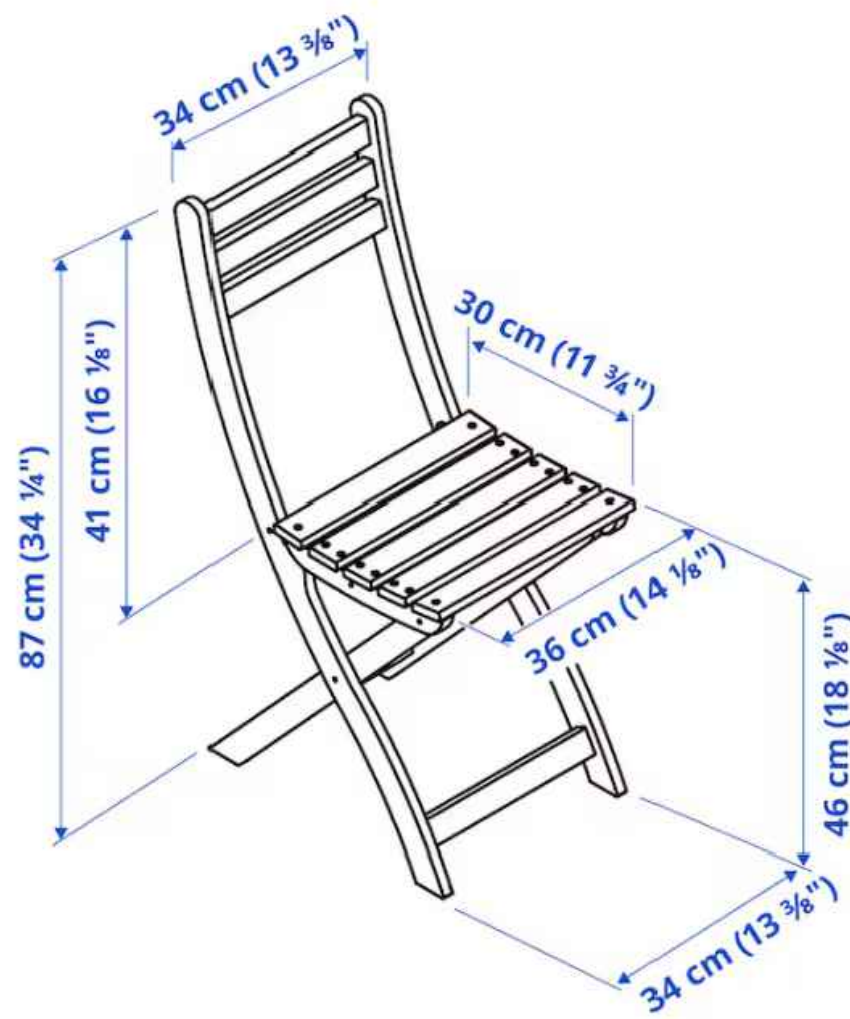
Sheet Title

A7.0

Sheet



OUTDOOR FURNITURE



CHAIR
MATERIAL: SOLID ACACIA WOOD, ACRYLIC STAIN

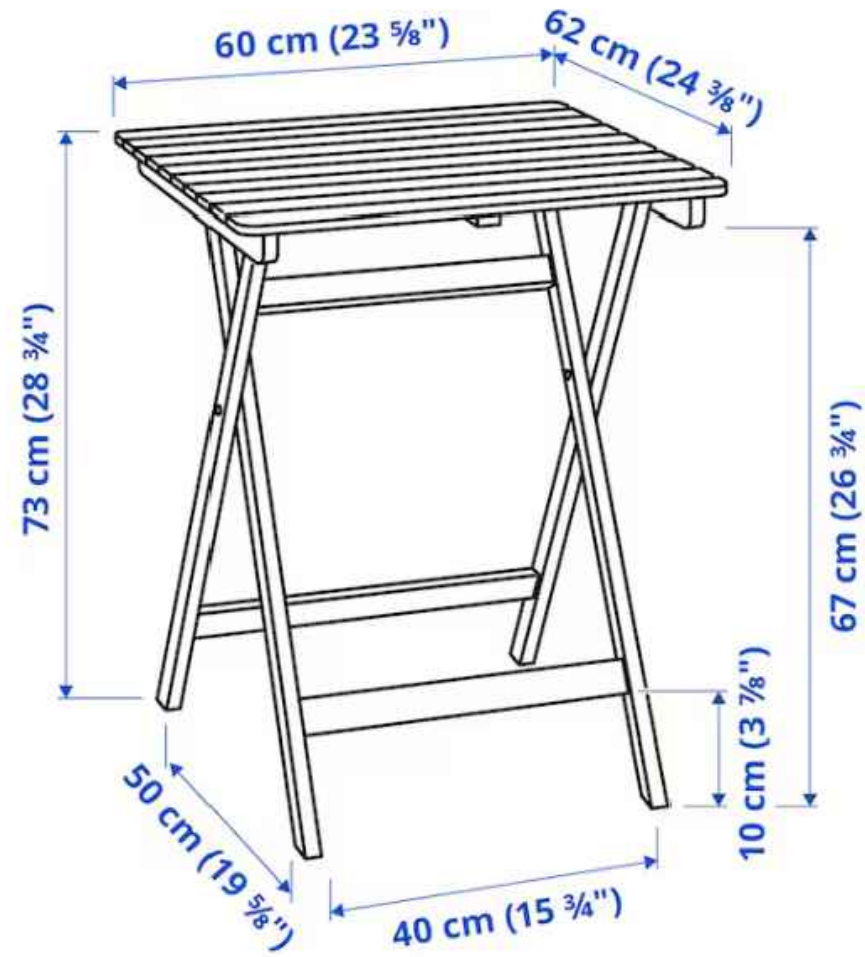


TABLE
MATERIAL: SOLID ACACIA WOOD, ACRYLIC STAIN



WHEEL STOP
STANDARD DUTY RUBBER WHEEL STOPS



PLANTER
DIMENSION: 17.72" X 17.72" X 17.72"
FINISH: POWDER-COATED, POWDER-COATED BLACK
MATERIAL: ALLOY STEEL, PINE WOOD