



## CANOPY STRUCTURE REMODEL OPTIONS 1, 2, & 3

CURRENT PATIO STRUCTURE HEAD ON VIEW SHOWING WHAT IT WOULD LOOK LIKE IF CLOTH CANOPY, TELEVISIONS, SPEAKERS, AND ALL OR A PORTION OF CURRENT BEAM STRUCTURE REMAINS



**SWOOSE STUDIO**  
16044 33RD AVE NE  
LAKE FOREST PARK, WA  
208.691.6148

**ROAM BAR**  
5105 BALLARD AVE NW  
SEATTLE, WA 98107

## DoN CofA RETROACTIVE APPLICATION

AS BUILT CONDITIONS MODIFIED, PER 01/02/25 LANDMARK REVIEW

PROJECT #: 2405

ISSUE DATE: 2025.01.09





## CANOPY STRUCTURE REMODEL OPTION 4

CURRENT PATIO STRUCTURE HEAD ON VIEW SHOWING WHAT IT WOULD LOOK LIKE IF TELEVISIONS, SPEAKERS, CLOTH CANOPY, AND ALL BEAMS ARE REMOVED



**SWOOSE STUDIO**  
16044 33RD AVE NE  
LAKE FOREST PARK, WA  
208.691.6148

**ROAM BAR**  
5105 BALLARD AVE NW  
SEATTLE, WA 98107

## DoN CoFA RETROACTIVE APPLICATION

AS BUILT CONDITIONS MODIFIED, PER 01/02/25 LANDMARK REVIEW

PROJECT #: 2405

ISSUE DATE: 2025.01.09





CANOPY STRUCTURE REMODEL OPTION 1

CURRENT PATIO CURBSIDE VIEW SHOWING WHAT IT WOULD LOOK LIKE IF CLOTH CANOPY, TELEVISIONS, AND SPEAKERS ARE REMOVED





**CANOPY STRUCTURE REMODEL OPTION 2**

CURRENT PATIO CURBSIDE VIEW SHOWING WHAT IT WOULD LOOK LIKE IF CLOTH CANOPY, TELEVISIONS, SPEAKERS, AND TWO BEAMS ARE REMOVED



**SWOOSE STUDIO**  
16044 33RD AVE NE  
LAKE FOREST PARK, WA  
208.691.6148

**ROAM BAR**  
5105 BALLARD AVE NW  
SEATTLE, WA 98107

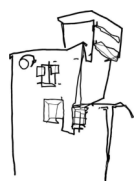
**DoN CofA RETROACTIVE APPLICATION**  
AS BUILT CONDITIONS MODIFIED, PER 01/02/25 LANDMARK REVIEW  
PROJECT #: 2405  
ISSUE DATE: 2025.01.09





CANOPY STRUCTURE REMODEL OPTION 3

CURRENT PATIO CURBSIDE VIEW SHOWING WHAT IT WOULD LOOK LIKE IF CLOTH CANOPY, TELEVISIONS, SPEAKERS, AND INTERIOR BEAMS ARE REMOVED



**SWOOSE STUDIO**  
16044 33RD AVE NE  
LAKE FOREST PARK, WA  
208.691.6148

**ROAM BAR**  
5105 BALLARD AVE NW  
SEATTLE, WA 98107

**DoN CoFA RETROACTIVE APPLICATION**  
AS BUILT CONDITIONS MODIFIED, PER 01/02/25 LANDMARK REVIEW  
PROJECT #: 2405      ISSUE DATE: 2025.01.09





## CANOPY STRUCTURE REMODEL OPTION 4

CURRENT PATIO CURBSIDE VIEW SHOWING WHAT IT WOULD LOOK LIKE IF CLOTH CANOPY, TELEVISIONS, SPEAKERS, AND ALL BEAMS ARE REMOVED



**SWOOSE STUDIO**  
16044 33RD AVE NE  
LAKE FOREST PARK, WA  
208.691.6148

**ROAM BAR**  
5105 BALLARD AVE NW  
SEATTLE, WA 98107

## DoN CofA RETROACTIVE APPLICATION

AS BUILT CONDITIONS MODIFIED, PER 01/02/25 LANDMARK REVIEW

PROJECT #: 2405

ISSUE DATE: 2025.01.09





# CANOPY STRUCTURE REMODEL OPTION 1

CURRENT PATIO SIDEWALK VIEW SHOWING WHAT IT WOULD LOOK LIKE IF CLOTH CANOPY, TELEVISIONS, AND SPEAKERS ARE REMOVED



**SWOOSE STUDIO**  
16044 33RD AVE NE  
LAKE FOREST PARK, WA  
208.691.6148

**ROAM BAR**  
5105 BALLARD AVE NW  
SEATTLE, WA 98107

**DoN CofA RETROACTIVE APPLICATION**  
AS BUILT CONDITIONS MODIFIED, PER 01/02/25 LANDMARK REVIEW

PROJECT #: 2405

ISSUE DATE: 2025.01.09





## CANOPY STRUCTURE REMODEL OPTION 2

CURRENT PATIO SIDEWALK VIEW SHOWING WHAT IT WOULD LOOK LIKE IF CLOTH CANOPY, TELEVISIONS, SPEAKERS, AND TWO BEAMS ARE REMOVED



**SWOOSE STUDIO**  
16044 33RD AVE NE  
LAKE FOREST PARK, WA  
208.691.6148

**ROAM BAR**  
5105 BALLARD AVE NW  
SEATTLE, WA 98107

## DoN CofA RETROACTIVE APPLICATION

AS BUILT CONDITIONS MODIFIED, PER 01/02/25 LANDMARK REVIEW

PROJECT #: 2405

ISSUE DATE: 2025.01.09





# CANOPY STRUCTURE REMODEL OPTION 3

CURRENT PATIO SIDEWALK VIEW SHOWING WHAT IT WOULD LOOK LIKE IF CLOTH CANOPY, TELEVISIONS, SPEAKERS, AND INTERIOR BEAMS ARE REMOVED



**SWOOSE STUDIO**  
16044 33RD AVE NE  
LAKE FOREST PARK, WA  
208.691.6148

**ROAM BAR**  
5105 BALLARD AVE NW  
SEATTLE, WA 98107

**DoN CofA RETROACTIVE APPLICATION**  
AS BUILT CONDITIONS MODIFIED, PER 01/02/25 LANDMARK REVIEW

PROJECT #: 2405

ISSUE DATE: 2025.01.09





## CANOPY STRUCTURE REMODEL OPTION 4

CURRENT PATIO SIDEWALK VIEW SHOWING WHAT IT WOULD LOOK LIKE IF CLOTH CANOPY, TELEVISIONS, SPEAKERS, AND ALL BEAMS ARE REMOVED



**SWOOSE STUDIO**  
16044 33RD AVE NE  
LAKE FOREST PARK, WA  
208.691.6148

**ROAM BAR**  
5105 BALLARD AVE NW  
SEATTLE, WA 98107

## DoN CofA RETROACTIVE APPLICATION

AS BUILT CONDITIONS MODIFIED, PER 01/02/25 LANDMARK REVIEW

PROJECT #: 2405

ISSUE DATE: 2025.01.09





## RETRACTABLE CANOPY REFERENCE IMAGE

IMAGERY SHOWING FABRIC CANOPY THAT COULD MOUNT TO INTERIOR FACE OF BEAMS (BEAMS ARE ~6' APART, ON CENTER)

\*CANOPY FABRIC COVER COLOR WHITE OR LIGHT BEIGE, COMPOSITE FABRIC (HIGH DENSITY POLYETHYLENE OR EQUIVALENT)



**SWOOSE STUDIO**

16044 33RD AVE NE  
LAKE FOREST PARK, WA  
208.691.6148

**ROAM BAR**

5105 BALLARD AVE NW  
SEATTLE, WA 98107

**DoN CofA RETROACTIVE APPLICATION**

AS BUILT CONDITIONS MODIFIED, PER 01/02/25 LANDMARK REVIEW

PROJECT #: 2405

ISSUE DATE: 2025.01.09





## RETRACTABLE CANOPY REFERENCE IMAGE

IMAGERY SHOWING FABRIC CANOPY THAT COULD MOUNT TO INTERIOR FACE OF BEAMS (BEAMS ARE ~6' APART, ON CENTER)

\*CANOPY FABRIC COVER COLOR WHITE OR LIGHT BEIGE, COMPOSITE FABRIC (HIGH DENSITY POLYETHYLENE OR EQUIVALENT)



**SWOOSE STUDIO**

16044 33RD AVE NE  
LAKE FOREST PARK, WA  
208.691.6148

**ROAM BAR**

5105 BALLARD AVE NW  
SEATTLE, WA 98107

**DoN CofA RETROACTIVE APPLICATION**

AS BUILT CONDITIONS MODIFIED, PER 01/02/25 LANDMARK REVIEW

PROJECT #: 2405

ISSUE DATE: 2025.01.09





## RETRACTABLE CANOPY REFERENCE IMAGE

IMAGERY SHOWING FABRIC CANOPY THAT COULD SUSPEND FROM CABLES STRUNG TO STEEL STRUCTURE IF BEAMS ARE REMOVED

\*CANOPY FABRIC COVER COLOR WHITE OR LIGHT BEIGE, COMPOSITE FABRIC (HIGH DENSITY POLYETHYLENE OR EQUIVALENT)



**SWOOSE STUDIO**

16044 33RD AVE NE  
LAKE FOREST PARK, WA  
208.691.6148

**ROAM BAR**

5105 BALLARD AVE NW  
SEATTLE, WA 98107

**DoN CofA RETROACTIVE APPLICATION**

AS BUILT CONDITIONS MODIFIED, PER 01/02/25 LANDMARK REVIEW

PROJECT #: 2405

ISSUE DATE: 2025.01.09





**RETRACTABLE CANOPY REFERENCE IMAGE**

IMAGERY SHOWING FABRIC CANOPY THAT COULD SUSPEND FROM CABLES STRUNG TO STEEL STRUCTURE IF BEAMS ARE REMOVED

\*CANOPY FABRIC COVER COLOR WHITE OR LIGHT BEIGE, COMPOSITE FABRIC (HIGH DENSITY POLYETHYLENE OR EQUIVALENT)



**SWOOSE STUDIO**  
16044 33RD AVE NE  
LAKE FOREST PARK, WA  
208.691.6148

**ROAM BAR**  
5105 BALLARD AVE NW  
SEATTLE, WA 98107

**DoN CofA RETROACTIVE APPLICATION**  
AS BUILT CONDITIONS MODIFIED, PER 01/02/25 LANDMARK REVIEW  
PROJECT #: 2405  
ISSUE DATE: 2025.01.09