

CITY LIGHT

We are here for you!

Seattle City Light offers bill assistance programs for income-qualified residential customers to lower their bills and reduce their past due balances.



PAYMENT PLANS

Available for all residential and business customers regardless of income. Payment plans allow you to pay past due balances over time without disruption of your services.

DISCOUNT



60%



50%

UTILITY DISCOUNT PROGRAM

Income-qualified residential customers can receive a 60% discount on future Seattle City Light bills and a 50% discount on future Seattle Public Utilities bills.



EMERGENCY BILL ASSISTANCE

Income-qualified residential customers can receive immediate, emergency assistance to reduce past due balances on their utility bills.



PROJECT SHARE

Funded by customer donations, Project Share provides a \$250 bill credit to qualified City Light residential customers with a past due balance of \$250 or more.



FEDERAL AND STATE ENERGY ASSISTANCE

City Light customers may also qualify for the Low-Income Home Energy Assistance Program (LIHEAP) and/or Washington State's new State Home Energy Assistance Program (SHEAP). LIHEAP and SHEAP are administered by our partners at:



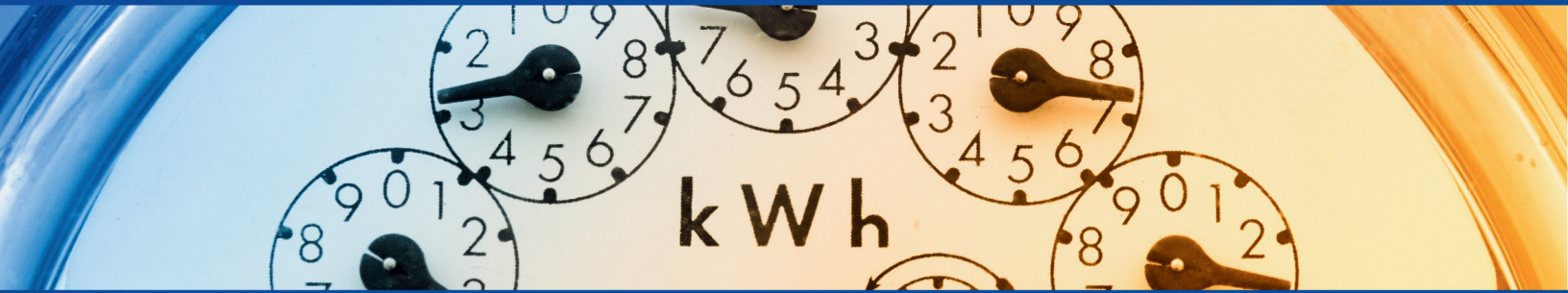
hopelink



Seattle City Light

Learn more at seattle.gov/city-light/billassistance

Contact us at (206) 684-3000
(interpretation services available at no cost to you)



2024 Income Eligibility Guidelines

(Pre-tax (gross) monthly household income)

Household Size	Utility Discount Program	Emergency Bill Assistance	Project Share	Federal Energy Assistance (LIHEAP)	State Energy Assistance (SHEAP)
1	\$3,689	\$4,217	\$4,218 - \$6,475	\$1,883	\$5,887
2	\$4,825	\$5,514	\$5,515 - \$7,400	\$2,555	\$6,729
3	\$5,960	\$6,811	\$6,812 - \$8,325	\$3,228	\$7,570
4	\$7,095	\$8,109	\$8,110 - \$9,246	\$3,900	\$8,408
5	\$8,230	\$9,406	\$9,407 - \$9,988	\$4,573	\$9,083
6	\$9,366	\$10,704	\$10,705 - \$10,729	\$5,245	\$9,754
7	\$9,578	\$10,947	\$10,948 - \$11,467	\$5,918	\$10,429
8	\$9,791	\$11,190	\$11,191 - \$12,208	\$6,590	\$11,293
9	\$10,004	\$11,433	\$11,434 - \$12,946	\$7,263	\$12,049
10	\$10,217	\$11,677	\$11,678 - \$13,683	\$7,935	\$12,806

