

A look at social and health disparities among King County, WA older adults

MCAAE Presentation

May 20, 2022

Myduc Ta
Epidemiologist
Public Health: Seattle-King Co.

Public Health
Seattle & King County



Karen Winston
Senior Planner
Aging and Disability Services



1

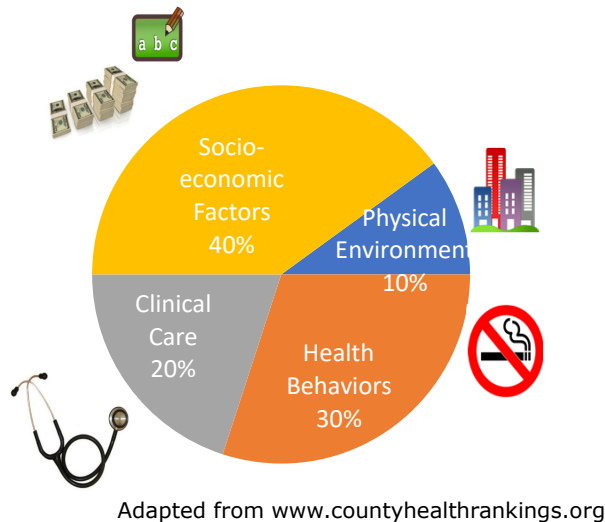
Today's Review

- What are Social Determinants of Health?
- What does King County population look like by race and age?
- What are some health conditions affecting King County African American elders?
- What do we do with the data?

2

2

Health is shaped and influenced by many factors



- **Clinical Care and Health Behaviors** contribute to 50%
- The other half is shaped by **Socioeconomic factors and Physical Environment**
- When assessing population health status **important to measure** these **diverse array of factors** that **contribute to health**

3

Foundations of Community Health

- Socioeconomic factors and physical environment are important contributors to everyone's health as we age.
- Not everyone has the same access to quality:
 - Neighborhoods & housing
 - Food
 - Education
 - Transportation
 - Employment opportunities and economic security

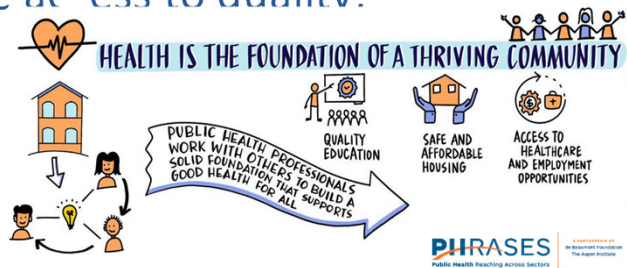


Image credit: Public Health Reaching Across Sectors, www.phrases.org

4

Age 60+ Population Growth by Subregion King County, 2000-2018						
Subregion	2000	2010	2013	2018	Change Between 2013 and 2018	
					Count	Percent
East Rural	3,400	5,900	6,800	7,700	900	13%
East Urban	53,000	73,600	84,000	93,900	9,900	12%
North	14,000	26,000	19,600	30,400	10,800	55%
Seattle	77,400	98,700	100,400	129,600	29,200	29%
South Rural	5,800	9,500	10,700	11,800	1,100	10%
South Urban	68,100	95,100	103,500	117,700	14,200	14%
Vashon Island	1,800	3,000	3,300	3,400	100	3%
King County Total Population*	239,900	312,600	349,500	394,900	45,400	13%

*Subregion totals will not sum to the King County total due to rounding.

Source: WA State Office of Financial Management, Forecasting Division, Single Year Intercensal Estimates, 2001–2018.

5

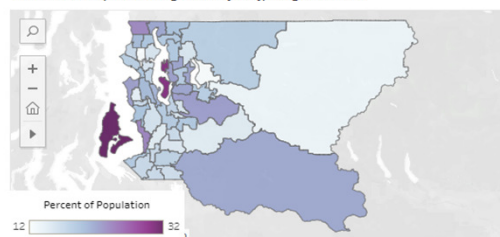
Some cities/neighborhoods of King County either have a higher percentage of older adults or have a larger number of them

Vashon Island has the highest percent of adults aged 60+ (31.5% of the population) among the 48 Health Reporting Areas

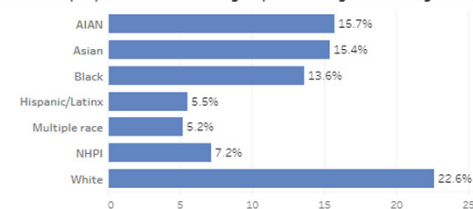
West Seattle has the highest number of people aged 60+ (about 13,500)

In 2018 about 13.6% of the Black population in King was age 60+, representing about 19,400 people

Percent of Population age 60+ by City/Neighborhood



Percent of people within each race group who are age 60+ in King County

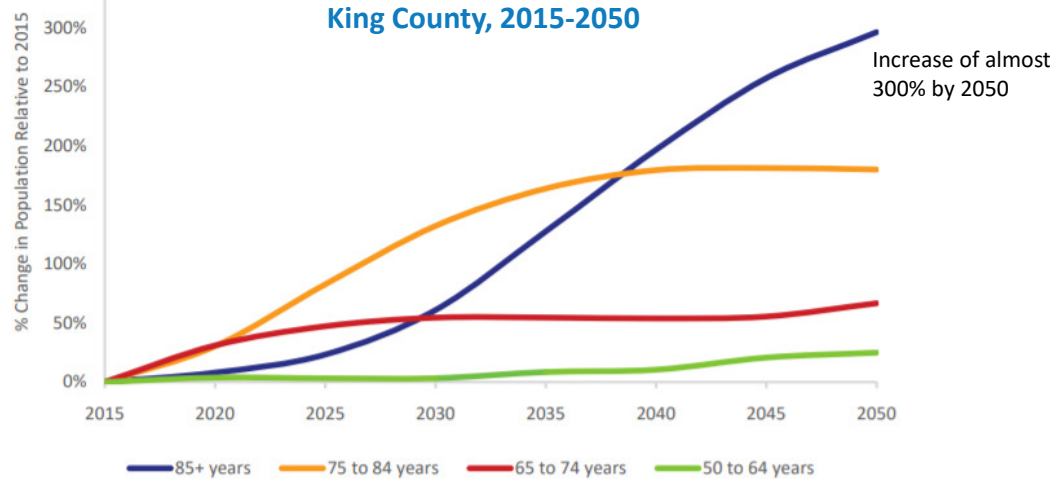


From the COVID-19 Vulnerable Communities Data Tool
<https://www.communitiescount.org/covid19vulnerable>

6

Projected Population Change by Age Group

King County, 2015-2050



Source: WA State Office of Financial Management, Forecasting Division, 2017 Projections, County Growth Management
Population Projections by Age and Sex.

7

About 25% of King County, WA Population Age 60+ Years are People of Color

Age 60+ Population by Race King County, 2018		
Race	Population	Percent
American Indian/Alaska Native	2,151	.5%
Asian	58,025	15%
Black/African American	19,196	5%
Hispanic/Latino	12,369	3%
Native Hawaiian/Pacific Islander	1,350	.3%
Two or More Races	5,310	1%
White	296,473	75%
60+ Total Population	394,874	
King County Total Population	2,190,200	

24.8%

Source: WA State Office of Financial Management, Forecasting Division, Single Year Intercensal Estimates, 2001–2018.

8

For 2013-2017, an estimated 22% of King County, WA population (all ages) was foreign born, including immigrants and refugees, compared to 13% nationally

Foreign-Born Population by Age, Language, and Poverty King County, 2013-2017 Average	
Total Foreign-Born Population	22%
Age	
55 to 64 years	11%
65 to 74 years	7%
75 to 84 years	4%
85 years and over	2%
English Proficiency	
Speaks English only	17%
Speaks English less than "very well"	41%
Poverty	
Percent Below the Federal Poverty Level	13%

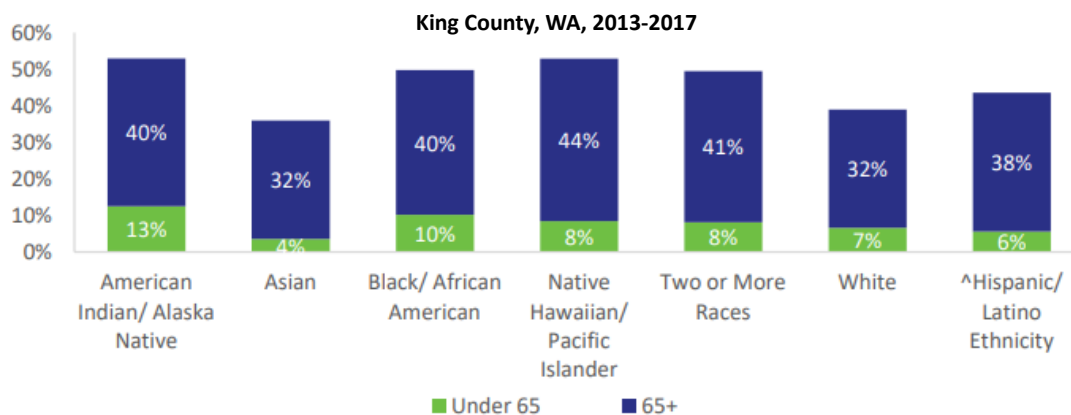
- Among King County older adults aged 55-64, 11% were foreign born
- Whereas 13% of King County adults aged 65 and older were foreign born

Source: U.S. Census Bureau, American Community Survey 5-Year Estimate, 2013-2017



9

People of color in King County, regardless of age, are more likely to have a disability (hearing, vision, cognitive, ambulatory, self-care, and/or independent living difficulty)



^Hispanics may be of any race and are also counted in their preferred race group.

Source: U.S. Census Bureau, American Community Survey 5-Year Estimate, 2013-2017.



10

Poverty among the 65 and older population is highest in Seattle and the South (Rural and Urban combined) subregions

Age 65+ Living in Poverty by Subregion King County, 2013–2017 Average						
East Rural	East Urban	North	Seattle	South Rural	South Urban	Vashon
5%	6%	8%	11%	8%	8%	6%

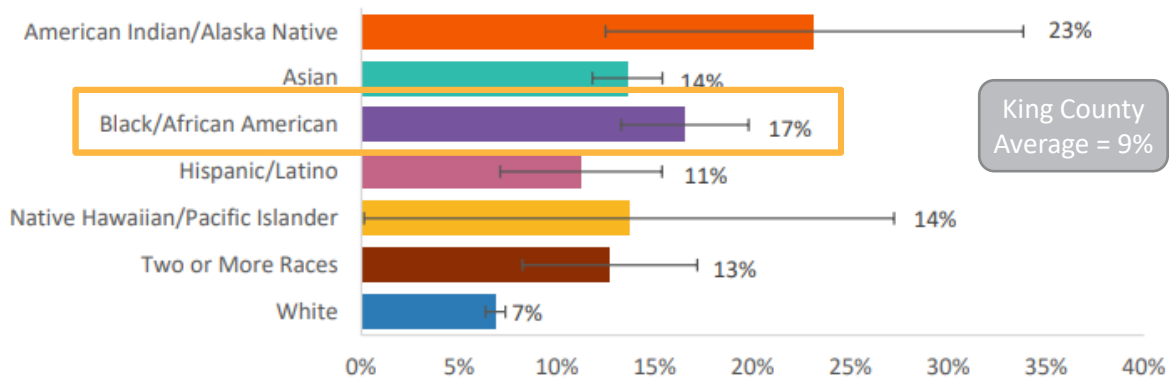
Source: U.S. Census Bureau, American Community Survey 5-Year Estimate, 2013–2017.



11

Disproportionate number of King County residents of color age 60+ experience poverty including Black/African American

King County, 2013–2017



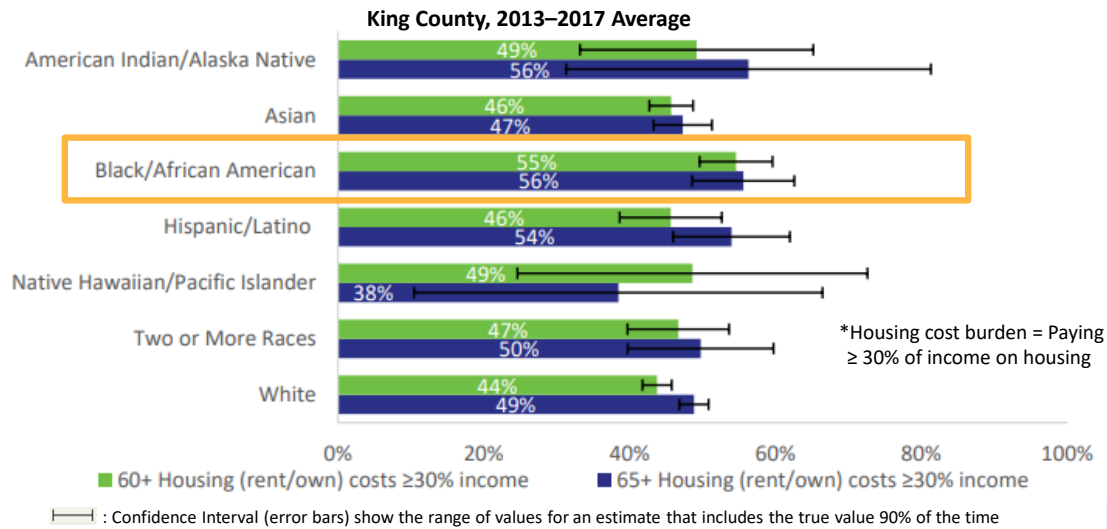
Source: U.S. Census Bureau American Community Survey, Public Use Microdata Sample, 2013–2017.

—: Confidence Interval (error bars) show the range of values for an estimate that includes the true value 90% of the time



12

In King County, a higher proportion of people of color age 60+ and 65+ face housing cost burden*, regardless of their status as renters or homeowners



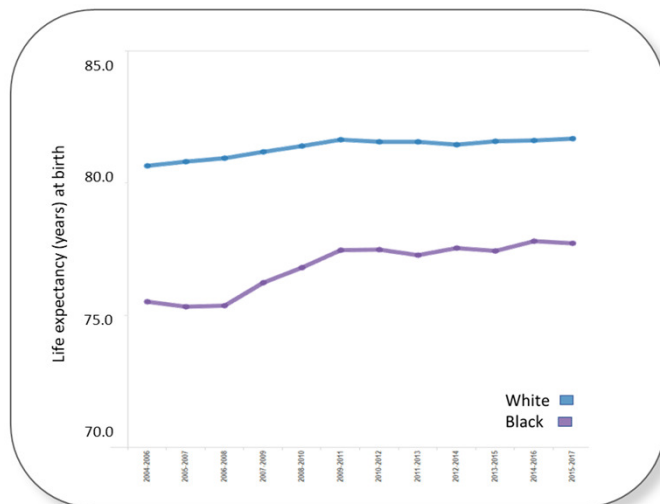
Source: U.S. Census Bureau American Community Survey, Public Use Microdata Sample, 2013–2017.

13

Life Expectancy: “A tale of two counties”

In King County, Black adult life expectancy is 78 years - **4 years less** - than white adult life expectancy of 82 years.

This gap is even greater by race & gender where life expectancy for a Black male is **9 years less** than a white female (75 to 84 years, respectively).



From the COVID-19 Vulnerable Communities Data Tool
<https://www.communitiescount.org/covid19vulnerable>

14

Chronic conditions among leading causes of death for King County, WA older adult residents

Leading Causes of death, King County (average: 2014-2018)
(ranked by number of deaths)

Rank	Total	Age 45-64 (All Race Groups)	Age 65+ (All Race Groups)
1	Cancer	Cancer	Heart disease
2	Heart disease	Heart disease	Cancer
3	Alzheimer's disease	Unintentional injuries	Alzheimer's disease
4	Unintentional injuries	Chronic liver disease	Stroke
5	Stroke	Suicide	Chronic lower resp. disease
6	Chronic lower resp. disease	Diabetes mellitus	Unintentional injuries
7	Diabetes mellitus	Stroke	Diabetes mellitus
8	Suicide	Chronic lower resp. disease	Parkinson's disease Influenza/pneumonia
9	Chronic liver disease	Viral hepatitis	
10	Influenza/pneumonia	Influenza/pneumonia	Essential (primary) hypertension

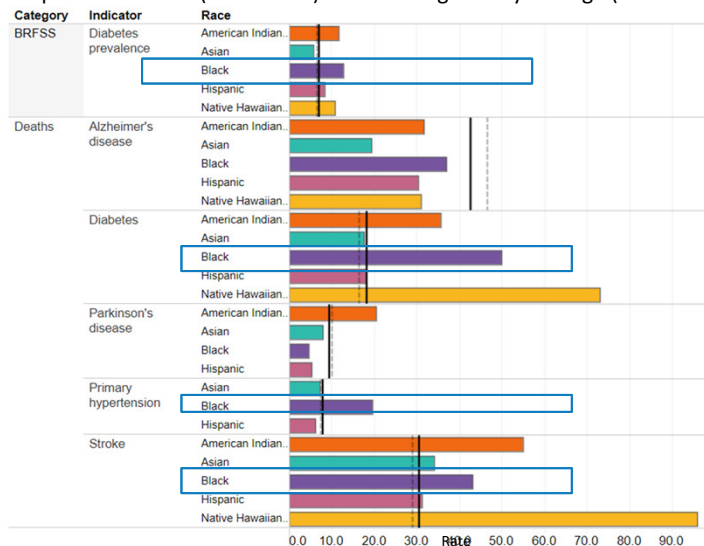
15

Compared to the county average, Black/African American King County residents have higher rates of deaths where the primary cause is diabetes, hypertension, or stroke

Data Sources:
Washington State Behavioral Risk Factor Surveillance System (BRFSS), 2012-2016

Washington State Death Certificates, 2012-2016

Rates of health indicators for King County communities of color (bars) compared to whites (dotted line) and the King County average (solid line)



16

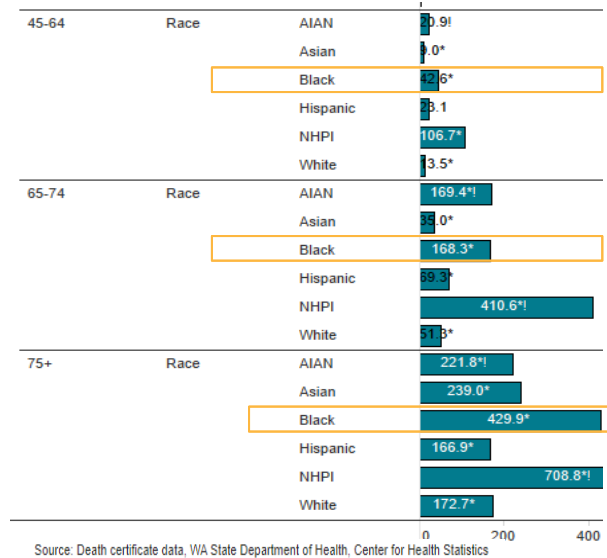
Rates of death where diabetes is the primary cause for adults whose race is Black is higher than the King County average for 65-74 and 75+ age groups

Among King County adults 75+, the diabetes death rate was 2.5 times higher among Black than white residents

AIAN = American Indian/ Alaska Native
NHPI = Native Hawaiian/ Pacific Islander

^ = Data suppressed if too few cases to protect confidentiality and/or report reliable rates
* = Significantly different from King County average
! = Interpret with caution; sample size is small, so estimate is imprecise

Diabetes deaths, King County (average: 2014-2018)



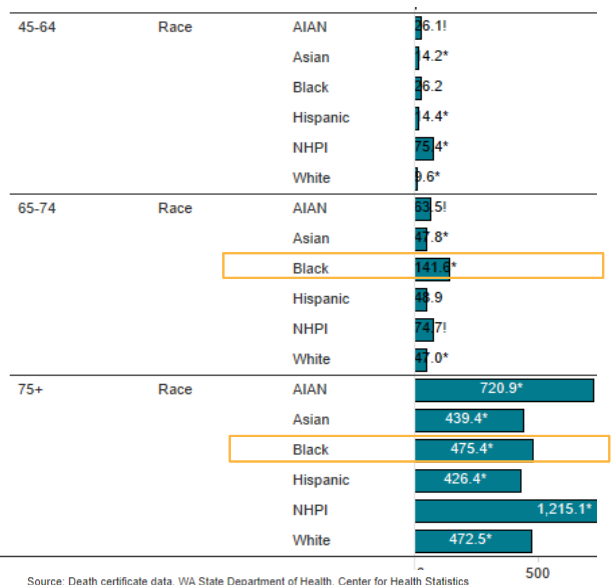
17

Rates of death where stroke is the primary cause for adults whose race is Black is higher than the King County average among older age groups: 64-74 and 75+

AIAN = American Indian/ Alaska Native
NHPI = Native Hawaiian/ Pacific Islander

^ = Data suppressed if too few cases to protect confidentiality and/or report reliable rates
* = Significantly different from King County average
! = Interpret with caution; sample size is small, so estimate is imprecise

Stroke deaths, King County (average: 2014-2018)

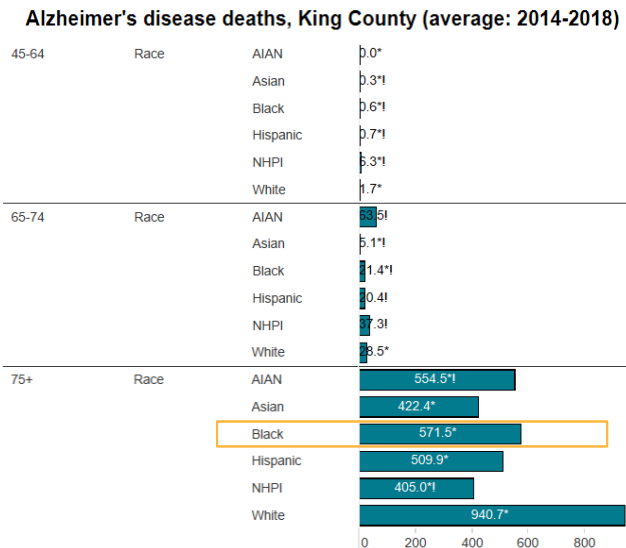


18

- Rates of death where Alzheimer's disease is the primary cause increases with age
- Among King County adults age 75+ whose race is Black, Alzheimer's disease deaths rate is higher than King County average

AIAN = American Indian/ Alaska Native
 NHPI = Native Hawaiian/ Pacific Islander

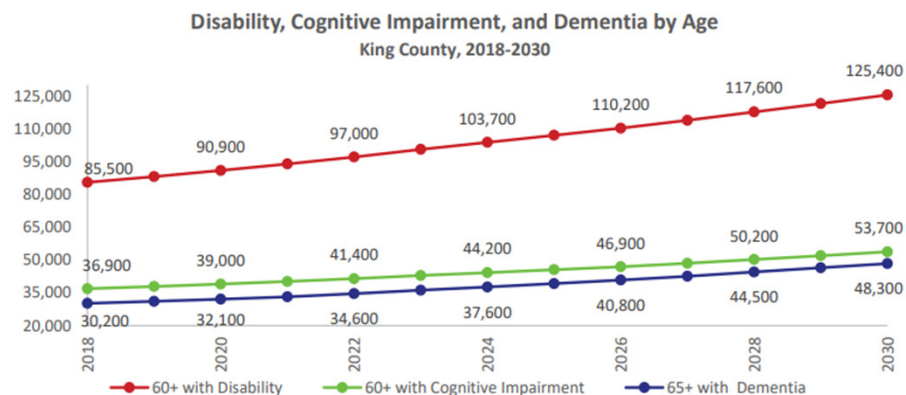
^ = Data suppressed if too few cases to protect confidentiality and/or report reliable rates
 * = Significantly different from King County average
 † = Interpret with caution; sample size is small, so estimate is imprecise



Source: Death certificate data, WA State Department of Health, Center for Health Statistics

19

Projected steadily increase in number of older adults with disabilities, cognitive impairments, and dementia as King County's older population grows



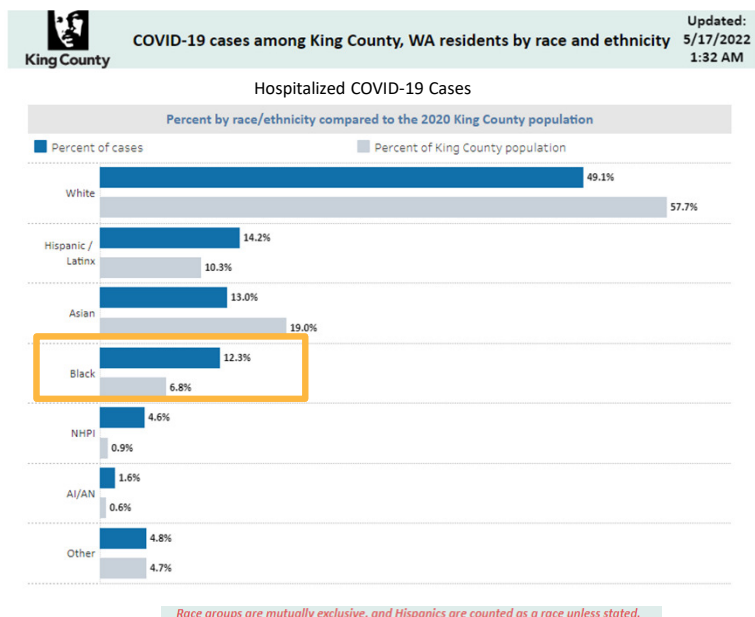
Source: WA Department of Social and Health Services, Aging and Long-Term Support Administration, Forecasts of the Aging Population, Dementia Prevalence and Use of Long-Term Care Services through 2030 in Washington State.

20

Black King County residents (all ages) represent 12.3% of hospitalized COVID-19 cases compared to 6.8% of the population

Source: King County, WA COVID-19 race and ethnicity data dashboard, <https://kingcounty.gov/depts/health/covid-19/data/race-ethnicity.aspx>

AIAN = American Indian/ Alaska Native
NHPI = Native Hawaiian/ Pacific Islander

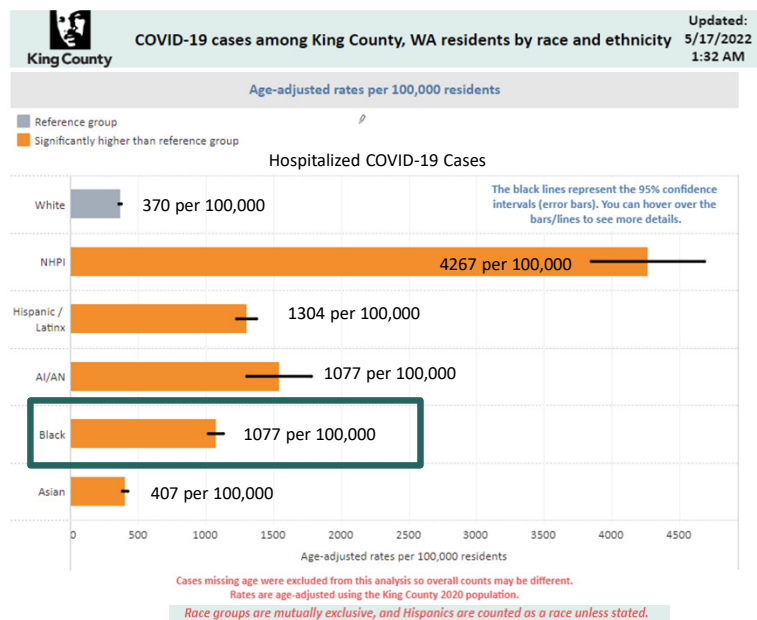


21

Age-adjusted rates of COVID-19 hospitalizations were 3 times higher among Black than white King County residents (all ages)

Source: King County, WA COVID-19 race and ethnicity data dashboard, <https://kingcounty.gov/depts/health/covid-19/data/race-ethnicity.aspx>

AIAN = American Indian/ Alaska Native
NHPI = Native Hawaiian/ Pacific Islander



22

Key Take-Aways

- Growth in older adult, 60+ population in north and south (urban and rural combined) King County subregions
- Older adults of color in King County, including African American experience elevated rates of:
 - Disability
 - Poverty, especially in combined south urban and rural areas
 - Housing cost burden, regardless of whether they rent or own their homes
 - Chronic disease deaths and lower life expectancy
- Health is shaped by many factors – **Health equity = every person can attain their full health potential**



23

Contact and Resources

- **Myduc Ta:** Myduc.Ta@kingcounty.gov
- **Karen Winston:** Karen.Winston@seattle.gov
- **ADS Area Plan:** www.agingkingcounty.org/data-reports/area-plan
- **African American Alzheimer's Fact Sheet:** www.dshs.wa.gov/altsa/dementia-action-collaborative
- **Community Health Indicators:** www.kingcounty.gov/chi
- **Health Disparities Dashboard:** <https://www.communitiescount.org/health-disparities-dashboard>
- **King County, WA COVID 19 race/ethnicity dashboard:** <https://kingcounty.gov/depts/health/covid-19/data/race-ethnicity.aspx>



24

2022 MCAAE Advocacy Agenda

1. Advocate for affordable housing
2. Partner with PH to collect community-wide data to identify and map health care gaps and high-need areas in King County and advocate for better access and support.
3. **Tied between:**
 - a) Seek partnerships to address health disparities that may be exacerbated with age.
 - b) Coordinate an African American forum on health (e.g., addictions, hoarding, managing chronic conditions, Alzheimer's/dementia, oral health, etc.).

25

Next Steps, Strategies, and Opportunities

- Partnerships
- Prevention
- Health Promotion

26

Extra Slides




27

Foreign-Born (all ages) Population by Subregion King County, 2013-2017

Foreign-Born Population by Subregion King County, 2013-2017 Average						
East Rural	East Urban	North	Seattle	South Rural	South Urban	Vashon
9%	29%	17%	18%	7%	25%	7%

Source: U.S. Census Bureau, American Community Survey 5-Year Estimate, 2013–2017.



28

