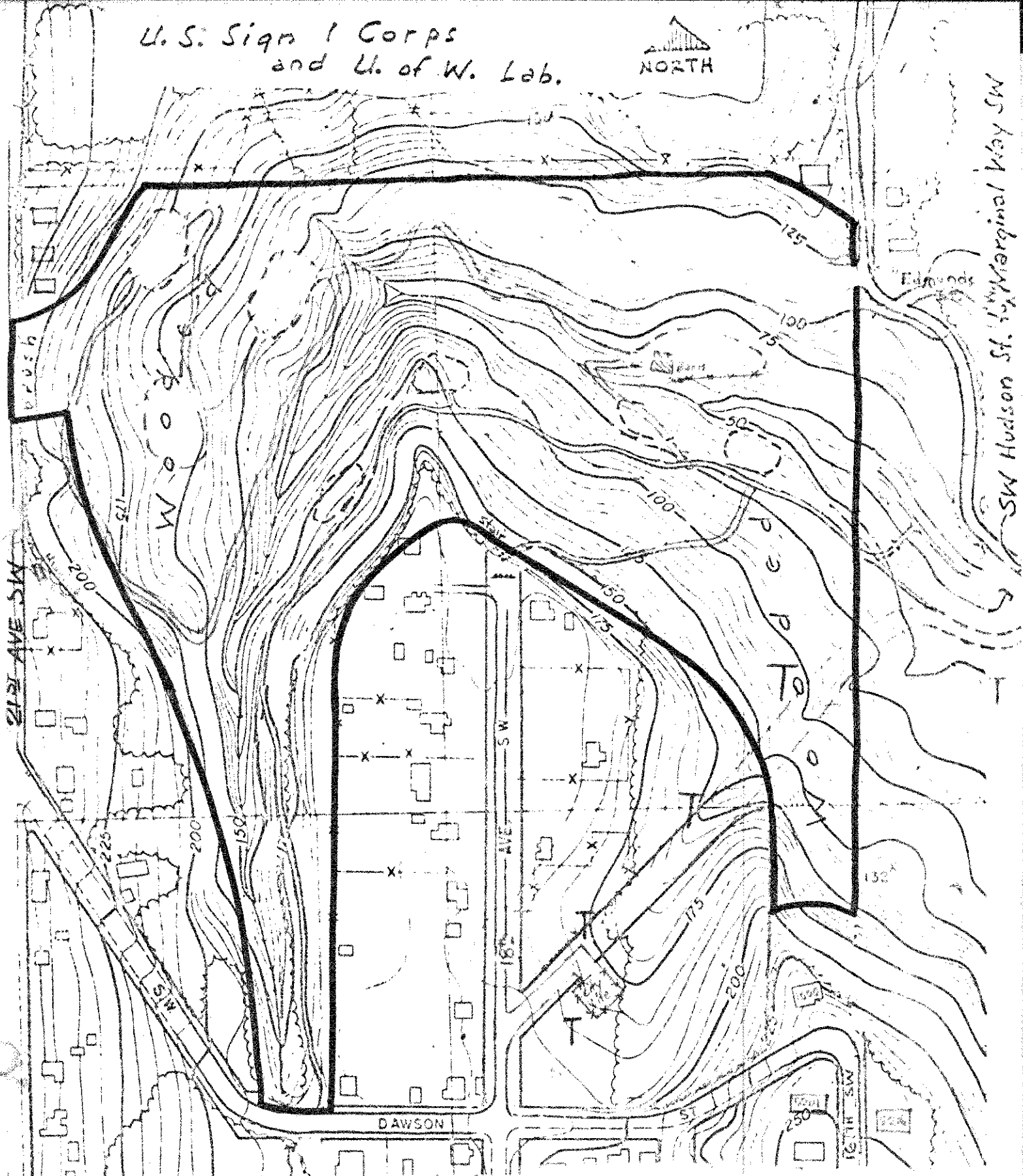


U.S. Sign 1 Corps  
and U. of W. Lab.

NORTH



Gift of the Puget Mill Co. (Mr. Ames, Talbot + G. Folsom) who suggested the name; adopted by Park Board in 1912.

Sawmill named for Puget Sound which was named by Vancouver in 1792 for Lt. Peter Puget of the Expedition.

A rugged logged off ravine; was a beautiful wooded park. (Mill successor = Pope & Talbot)

For many years the park was officially listed as undeveloped and minimal maintenance was done. Various youth groups (Scouts) were given permission to clear trails, build bridges and camp in the park. In 1964 the Park Board approved a Concession Contract (20 yr. term) with the Yates Stables Co. (a resident on NW corner) to establish and operate a horseback riding facility in the park with bridle trails southward thru the greenbelt. Yates found conditions "unsuitable" and was given a permit to fill the ravine floor, upon recommendation of consultant David Jensen. But the community protested, the Board stopped the filling + Yates went to court (1970), dismissed by Judge on basis of "30 day revokable" clause in permit. The filling was done at the NE corner of the Park.

17.6 Acres

+ 3.5 Ac. of "Blvd." remaining along north side.

+ 2.8 Ac. of "19th Av." extended thru park by Ordinance in 1938.

Gift of Puget Mill Co. in 1912: "...for a public park..."

WE 5-2520

PUGET PARK

SW Hudson St. by Marginal Way SW

112931