

## GENERAL INFORMATION

### CONTACT

King Street Station Program Lead, James Coley, [james.coley@seattle.gov](mailto:james.coley@seattle.gov) (206) 684-4186

### FACILITY HOURS

**Gallery Hours:** Wednesday - Saturday, 11:00 a.m. - 5:00 p.m.

**Gallery Hours on First Thursdays:** 11:00 a.m. - 8:00 p.m.

**ARTS Administrative Office Hours:** Monday-Friday 8:00 a.m. - 5:00 p.m.

### ABOUT THE FACILITY - ARTS at King Street Station

- **ADA Access:** The Facility is ADA compliant and has both stair and elevator access.
- **Restrooms:** Restrooms are all-gender. There are 3 ADA accessible restrooms, 2 of which are family size with baby-changing tables. There 4 ambulatory stalls - 3 with toilets and 1 with a urinal.
- **Staffing:** The Facility is staffed by a receptionist and a security guard from Wednesday-Saturday 11am-5pm and First Thursdays until 8pm.
- **Climate:** There is temperature regulation typical of an office building, but the Facility is not fully light-, climate-, or humidity-controlled like a museum.
- **All-Ages Space:** ARTS at King Street Station is an all-ages public facility and welcomes children and youth guests at all times and to all public exhibitions, programs, and events. (While everything is all-ages, not everything at ARTS is “family/child friendly.” Some programs are clearly tailored to specialized audiences. Whether or not a program is tailored for, or interesting to, children, they are always welcome to be present.)
- **Low-Fragrance Space:** The Seattle Office of Arts & Culture (ARTS) strongly suggests that all individuals minimize the use of fragrances at all ARTS facilities, including all ARTS sponsored events and activities. ARTS takes a *harm-reduction* approach to scent: while visitors and staff are asked to reduce fragrance use, it is not possible to guarantee that the facilities are fully fragrance-free. A number of people experience physical effects from scented products, such as perfumes, colognes, air fresheners and scented products, including perfumes and personal care products, deodorizers and cleaners, pesticides, wall and floor coverings, and building materials. The health of some of our staff, commissioners, advisors, and members of the public may be harmed by exposure to cologne, perfume, or other fragrances – which may cause difficulty breathing, migraine headaches, flu-like symptoms and more. These symptoms are not always readily apparent and sometimes show up hours later or persist for days after an exposure. We ask your help in making KSS and LHPAI accessible to all by coming to our facilities fragrance-free.

## ABOUT THE CULTURAL SPACE / GALLERY

- The cultural space celebrates the industrial character of King Street Station, a historic 1906 brick building. It has a raw, unfinished feel - exposed brick and pipes, soaring open ceilings, and mechanical elements are all visible.
- There is a fair amount of ambient noise from the mechanical systems above, as well as the train station below. **This space is not acoustically controlled, and it is not possible to achieve silence.**
- Overall, the main cultural space is 75' wide x 105' long, for a total of 7,875 square feet.
- It has slender steel columns on a grid every 15'. This is not a clear, unobstructed space; take this into account when proposing large artwork or performances.
- The ceiling is open to the exposed steel truss and wood/tile roof, which are up to 40' high in some areas. It is also open to the various mechanical systems and pipes of the building, with an effective "ceiling height" in many areas of approximately 12'.
- There are **eight (8) large-scale, movable walls** that hang from tracks on the ceiling and can be used to subdivide the space in various ways. They can also be pushed to one end to provide an open floor plan. Each wall is approximately 12' wide by 9' tall. They are double-sided, so there are 16 display surfaces.
- There is also **one (1) large fixed display wall** at one end of the space. It is approximately 30' wide by 8' tall. This wall is between doors to the meeting rooms, the drinking fountain, and a fire stair.
- Two sides of the space are exposed brick with windows and various power/mechanical pipes visible.
- The fourth side is separated from the Living Room by large, structural steel earthquake bracing, and a chain-mail curtain; this wall also includes the door to the restrooms.
- The floors in this space are Concrete.
- Half of the windows in the cultural space can be opened; these have safety grates. All windows have window blinds that significantly darken the gallery, though absolute darkness during daylight hours is not possible
- There is abundant electrical power available throughout, with outlets on the walls and in the mechanical ceiling.
- There is extensive **lighting** for artwork displays, in both 4000k (cool, daylight) and 3000k (warm) temperatures.
- The elevator door is 42" wide and 84" high. Its interior dimensions are 64" length x 81" width x 89" height. Its weight limit is 3,500 lb.
- All other doors into the space are typical 36" width by 84" height. Extra-long objects must be brought up by the stairs.
- Extra-large objects may need to be constructed in parts and assembled on-site, or built on-site.
- Maximum occupancy of 360 people standing, 150 seated.
- There are 2 racks of lightweight folding stools for use in this space.

## ABOUT ADDITIONAL EXHIBITION / EVENT SPACE

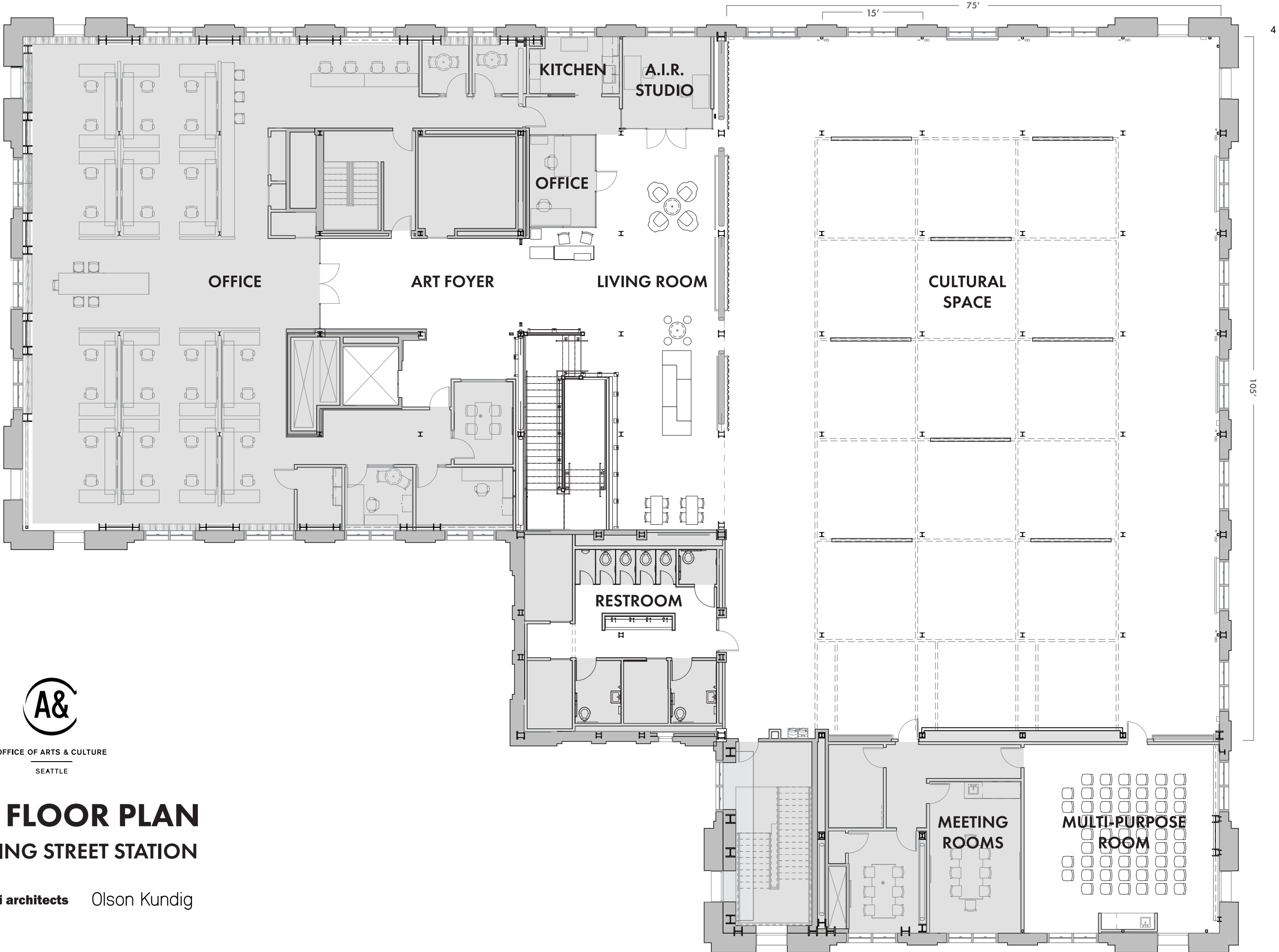
- In addition to the large cultural space, artwork can be displayed in the Living Room and Art Foyer.
- 2D, 3D, and media artwork can be installed in the main entry stairwell.
- ARTS is open to proposals that make site-specific or atypical use of the building/spaces within the building. ARTS is open to considering events/performances that move throughout the building as long as they do not disrupt the operations of SDOT, Station Space, or Amtrak. Approval proposals making use of additional spaces within the building are subject to review and are contingent upon additional approval from the affected co-occupants.

## ABOUT THE LARGE GATHERING / PRESENTATION ROOM

- Maximum occupancy of 60 people standing, or 40 seated.
- It can be set up in the following ways: tables and chairs (workshop/meeting style), theatre/presentation style (chairs only), or unfurnished (empty / standing room).
- Audiovisual Technology is built into the room, which includes a computer system, ceiling-mounted projector with 4k projection paint on one wall, and ceiling-mounted microphones and a webcam for teleconferencing.
- Window blinds can dim the daylight for screenings/projection.
- It is equipped with a hearing loop for hearing aids.
- It has a sink, coffee maker, electric kettle, and water pitchers.
- The floor is carpeted.

## ABOUT THE LIVING ROOM AND ART FOYER

- The Living Room has free WiFi - CITYOFSEATTLEGUEST
- There are a range of seating options: various tables, stools, chairs, and benches.
- In this area, the flooring is a combination of Terrazzo (decorative polished floor) and carpet.



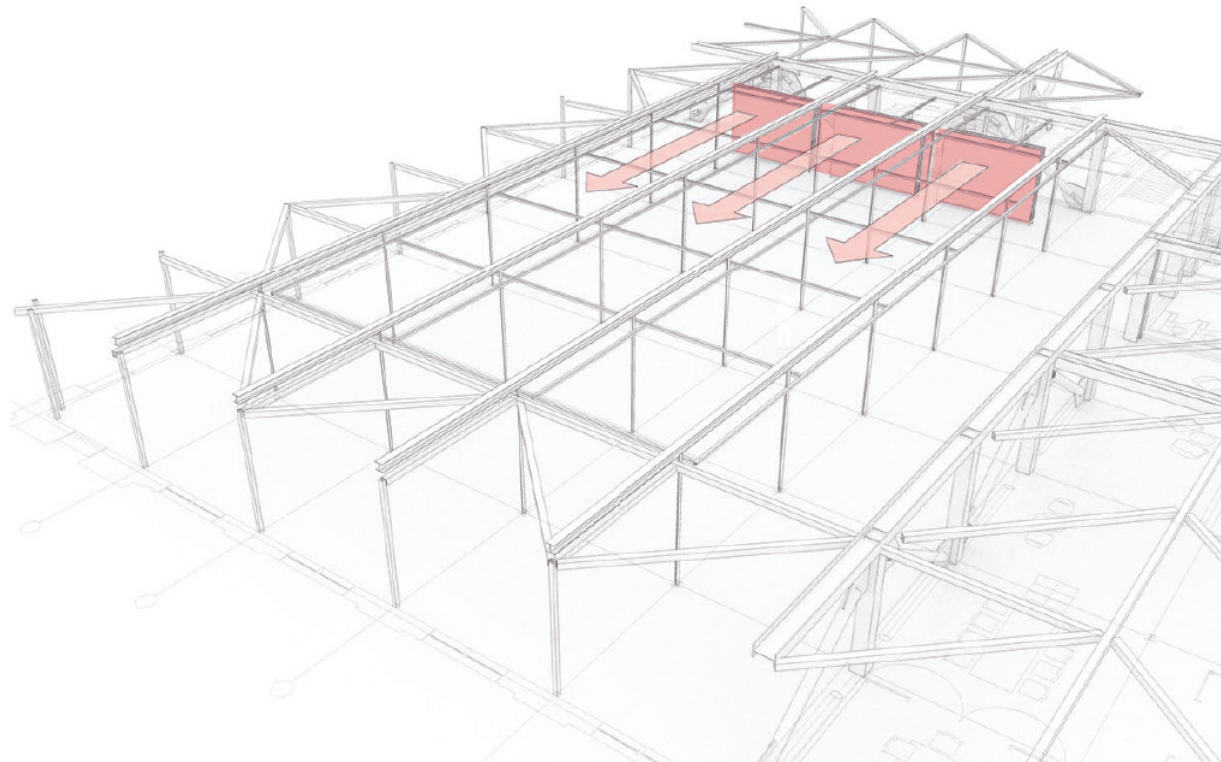
OFFICE OF ARTS & CULTURE  
SEATTLE

## THIRD FLOOR PLAN

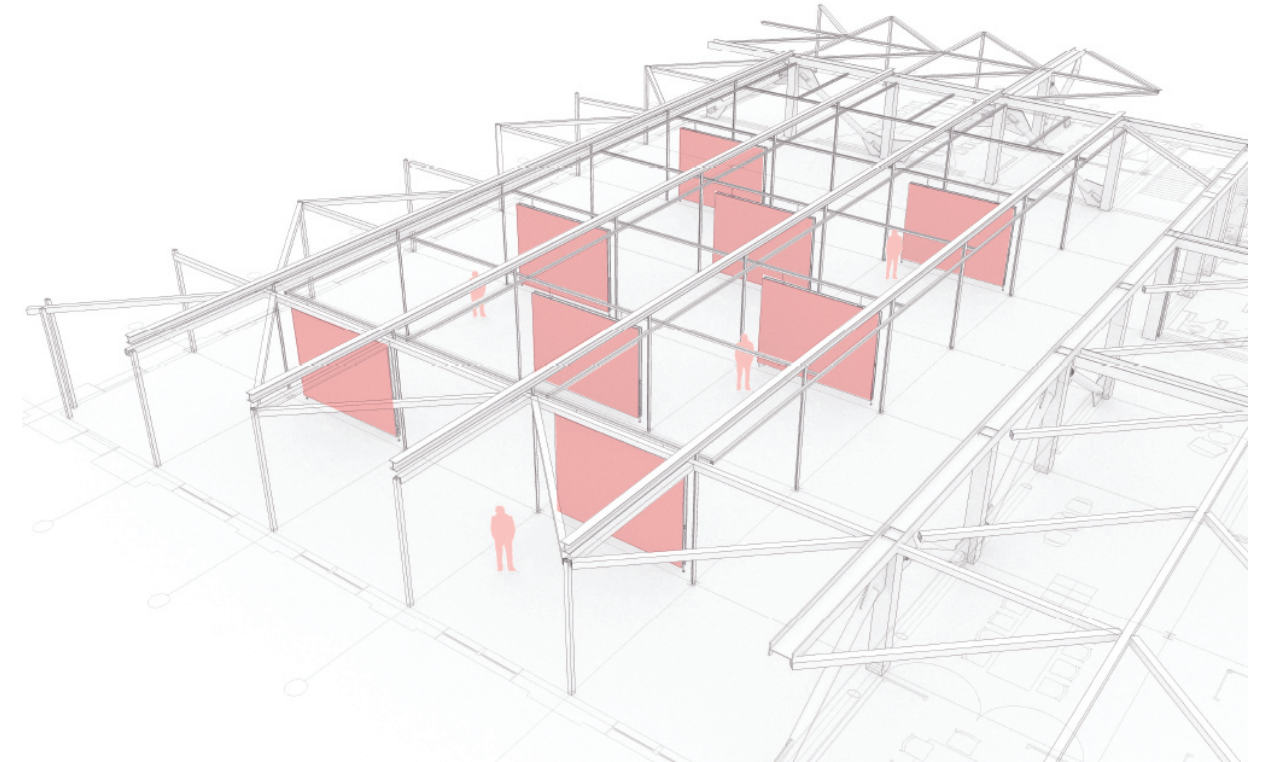
### ARTS at KING STREET STATION

schacht | aslani architects Olson Kundig

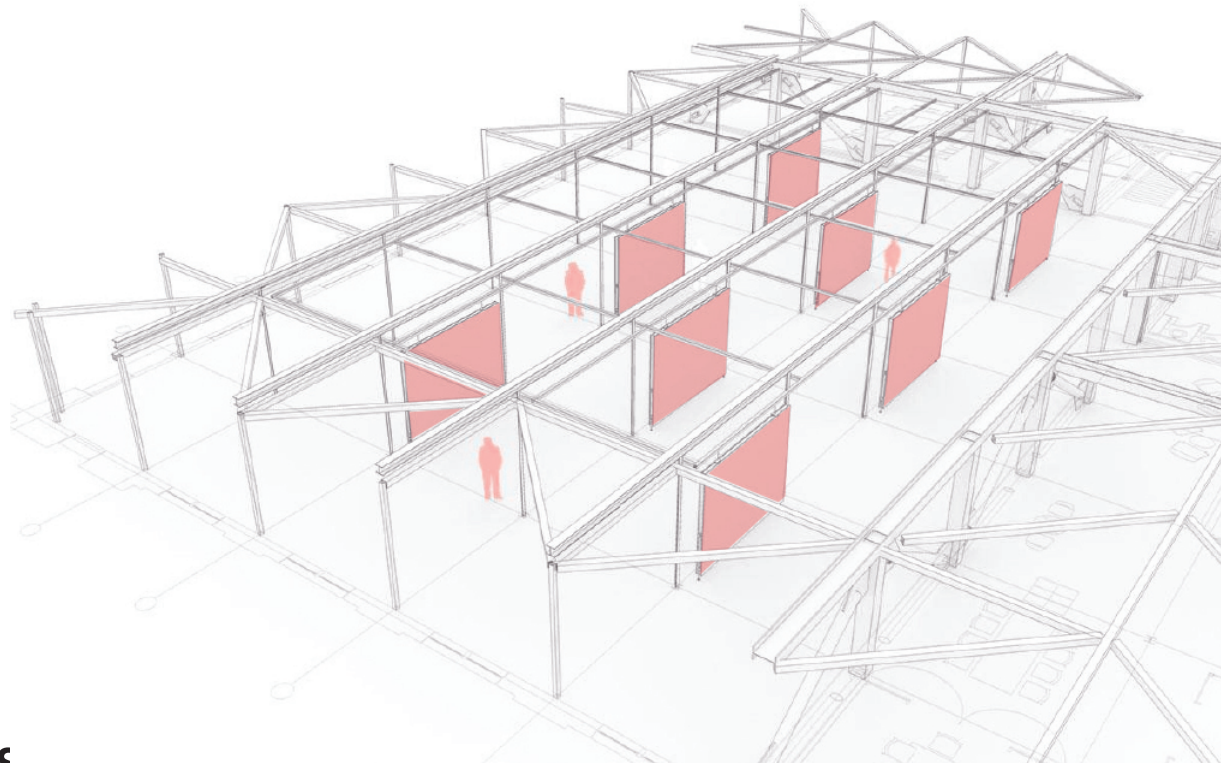




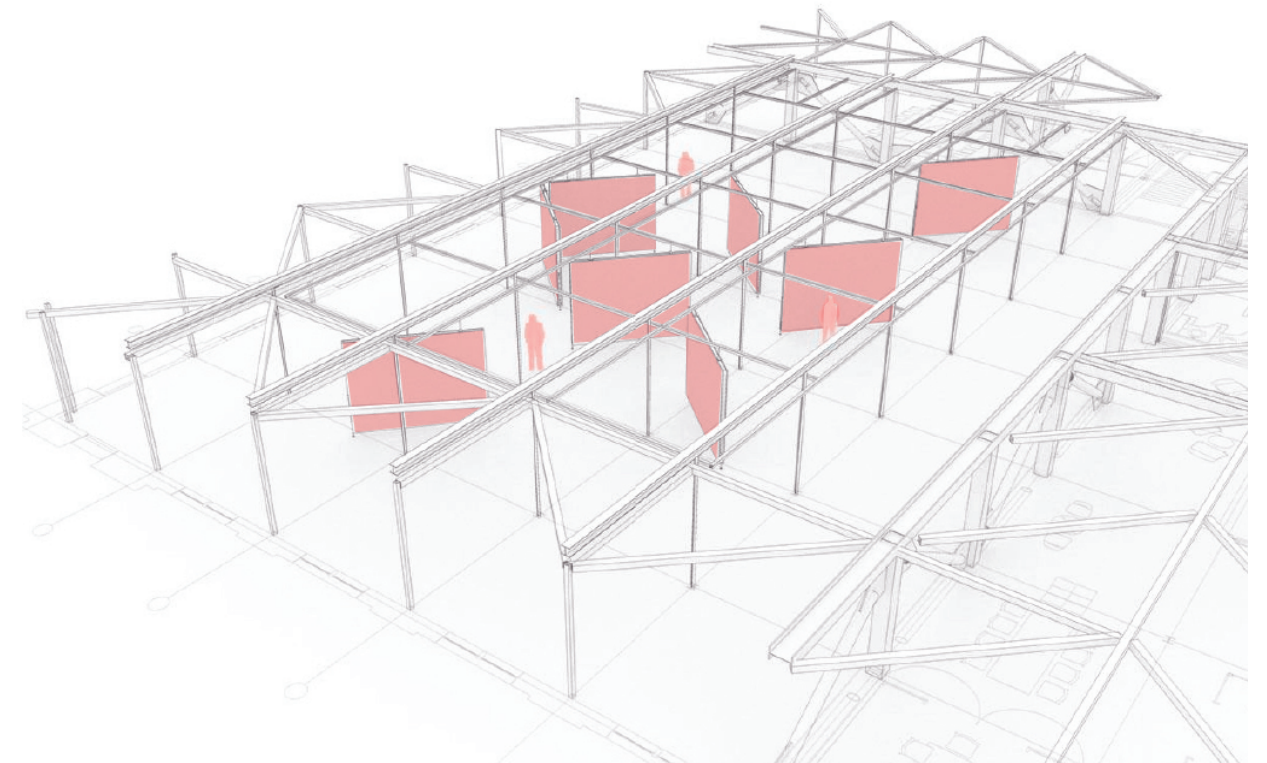
**PARKED CONFIGURATION**



**NORTH-SOUTH CONFIGURATION**



**EAST-WEST CONFIGURATION**



**FREEFORM CONFIGURATION**



OFFICE OF ARTS & CULTURE  
SEATTLE

# KINETIC WALLS

## ARTS at KING STREET STATION

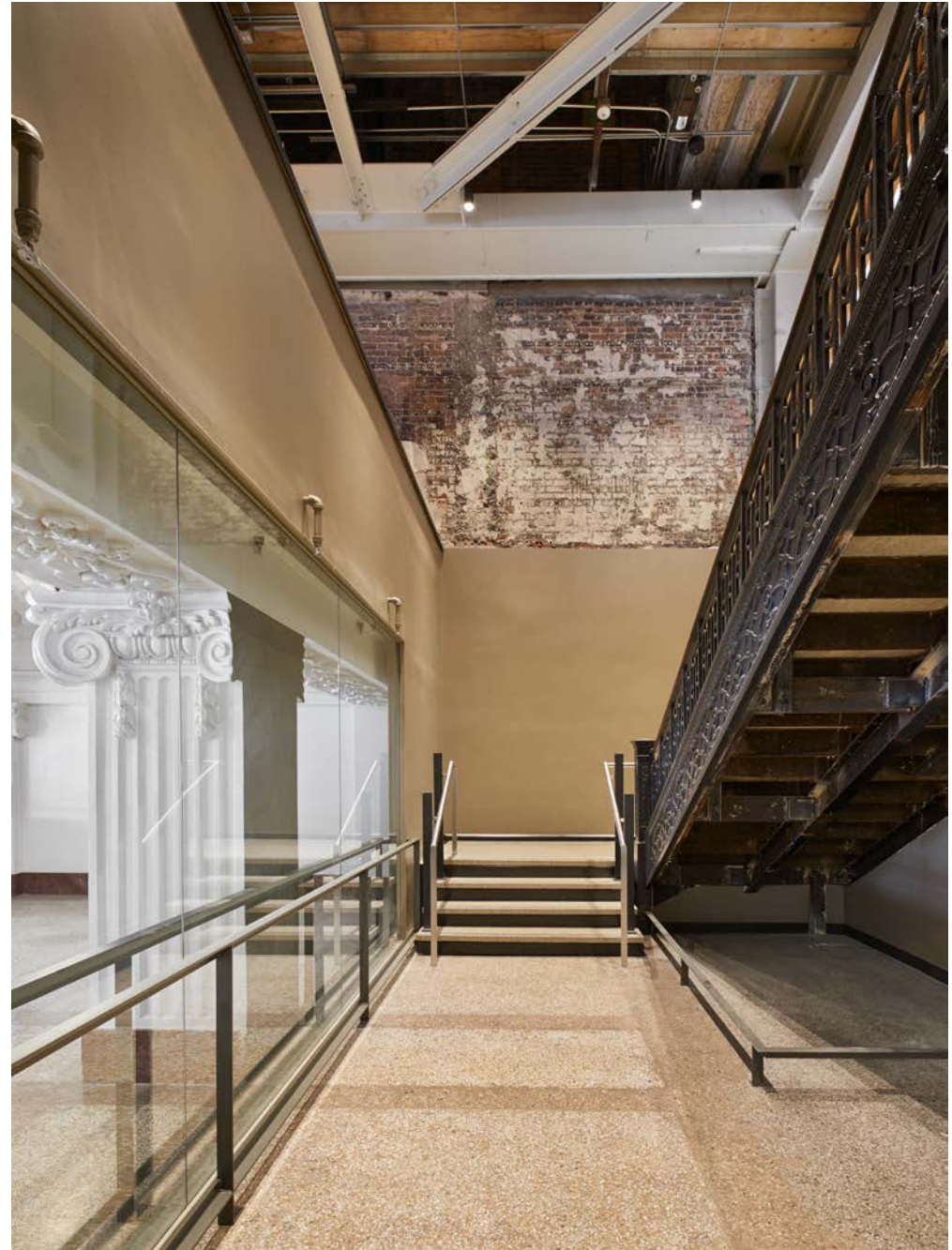
schacht | aslani architects Olson Kundig

KSS Equipment Inventory					
BRAND	MFR #	ITEM	QTY	LINK	NOTES
TELEVISIONS / MONITORS					
Samsung	Class Q80C	85" QLED 4K UHD Smart Tizen TV		<a href="#">85" Class QLED 4K Q80C   Samsung US</a>	
Samsung	Q7F	55" QLED 4K TV	2	<a href="https://www.samsung.com/us/televisions-home-theater/tvs/qled-4k-tvs/55--class-q7f-qled-4k-tv-qn55q7famfxza/">https://www.samsung.com/us/televisions-home-theater/tvs/qled-4k-tvs/55--class-q7f-qled-4k-tv-qn55q7famfxza/</a>	
VIVO	STAND-TV03E	Rolling TV Stand for one 32" to 65" Flat Panel Screen   Single Sided	2	<a href="https://vivo-us.com/products/stand-tv03e">https://vivo-us.com/products/stand-tv03e</a>	for Samsung Q7
PROJECTORS					
Epson		LightScene EV-115 Accent Lighting 3LCD Laser Projector	3	<a href="#">Epson LightScene EV-115 3LCD Projector Specs (projectorcentral.com)</a>	
Epson		PowerLite 810E 3LCD Extreme Short Throw Laser Projector	2	<a href="#">Epson PowerLite 810E 3LCD Projector Specs (projectorcentral.com)</a>	
Panasonic	PT-EW730ZU	Extreme Short Throw	1	<a href="https://na.panasonic.com/us/audio-video-solutions/projectors/fixed-installation/pt-ew730zu-3lcd-fixed-installation-projector">https://na.panasonic.com/us/audio-video-solutions/projectors/fixed-installation/pt-ew730zu-3lcd-fixed-installation-projector</a>	For bright conditions / larger walls. Coded.
Epson	PowerLite 1286	Lamp-Free Laser	1	<a href="https://epson.com/For-Work/Projectors/Meeting-Room/PowerLite-1286-Wireless-WUXGA-3LCD-Projector/p/V11H846120">https://epson.com/For-Work/Projectors/Meeting-Room/PowerLite-1286-Wireless-WUXGA-3LCD-Projector/p/V11H846120</a>	For most uses, easily portable, wireless
Epson	Duet	Display with 4K	1	<a href="https://epson.com/Accessories/Projector-Accessories/Duet-Ultra-Portable-Projector-Screen/p/ELPSC80">https://epson.com/Accessories/Projector-Accessories/Duet-Ultra-Portable-Projector-Screen/p/ELPSC80</a>	
MEDIA PLAYERS					
Micca	Speck G2	Media Players	5	<a href="https://www.miccatron.com/micca-speck/">https://www.miccatron.com/micca-speck/</a>	
Verbatim	70000	ToughMAX Thumb Drive, 16GB	5	<a href="https://www.verbatim.com/prod/usb-drives/everyday-usb-drives/ToughMAX-usb-drive/">https://www.verbatim.com/prod/usb-drives/everyday-usb-drives/ToughMAX-usb-drive/</a>	For use with Micca Speck
SanDisk	ClipJam	Audio MP3 player, 8GB	6	<a href="https://www.sandisk.com/home/mp3-players/clip-jam">https://www.sandisk.com/home/mp3-players/clip-jam</a>	
SPEAKERS / HEADPHONES					
Meidong	KY-2000	Surround sound audio speaker bar	3	<a href="http://www.meidongaudio.com/index.php?route=product/product&amp;product_id=87">http://www.meidongaudio.com/index.php?route=product/product&amp;product_id=87</a>	

Sony	ZX110	<u>Headphones, White</u>	4	<a href="https://www.sony.com/electronics/headband-headphones/mdr-zx110-zx110a-zx110ap">https://www.sony.com/electronics/headband-headphones/mdr-zx110-zx110a-zx110ap</a>	
Sony	ZX110	<u>Headphones, Black</u>	4	<a href="https://www.sony.com/electronics/headband-headphones/mdr-zx110-zx110a-zx110ap">https://www.sony.com/electronics/headband-headphones/mdr-zx110-zx110a-zx110ap</a>	
ACCESSORIES					
Miscellaneous		Various cables, chargers, power cords, surge protectors, extension cords, batteries, etc.			











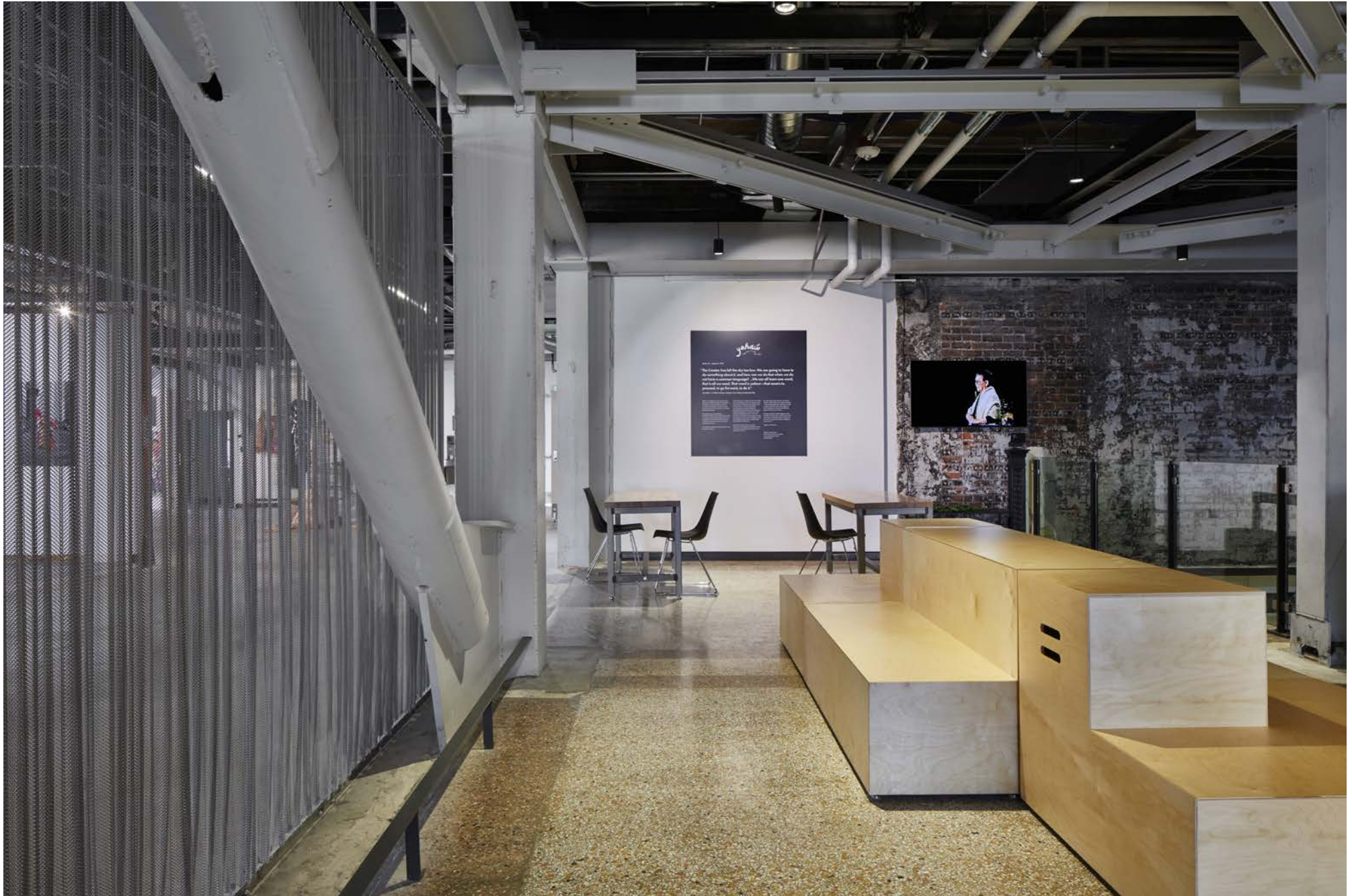
**ARTS at King Street Station** | Reception Lobby from Art Foyer | Photography by Benjamin Benschneider





**ARTS at King Street Station** | Living Room with view into Gallery | Photography by Benjamin Benschneider











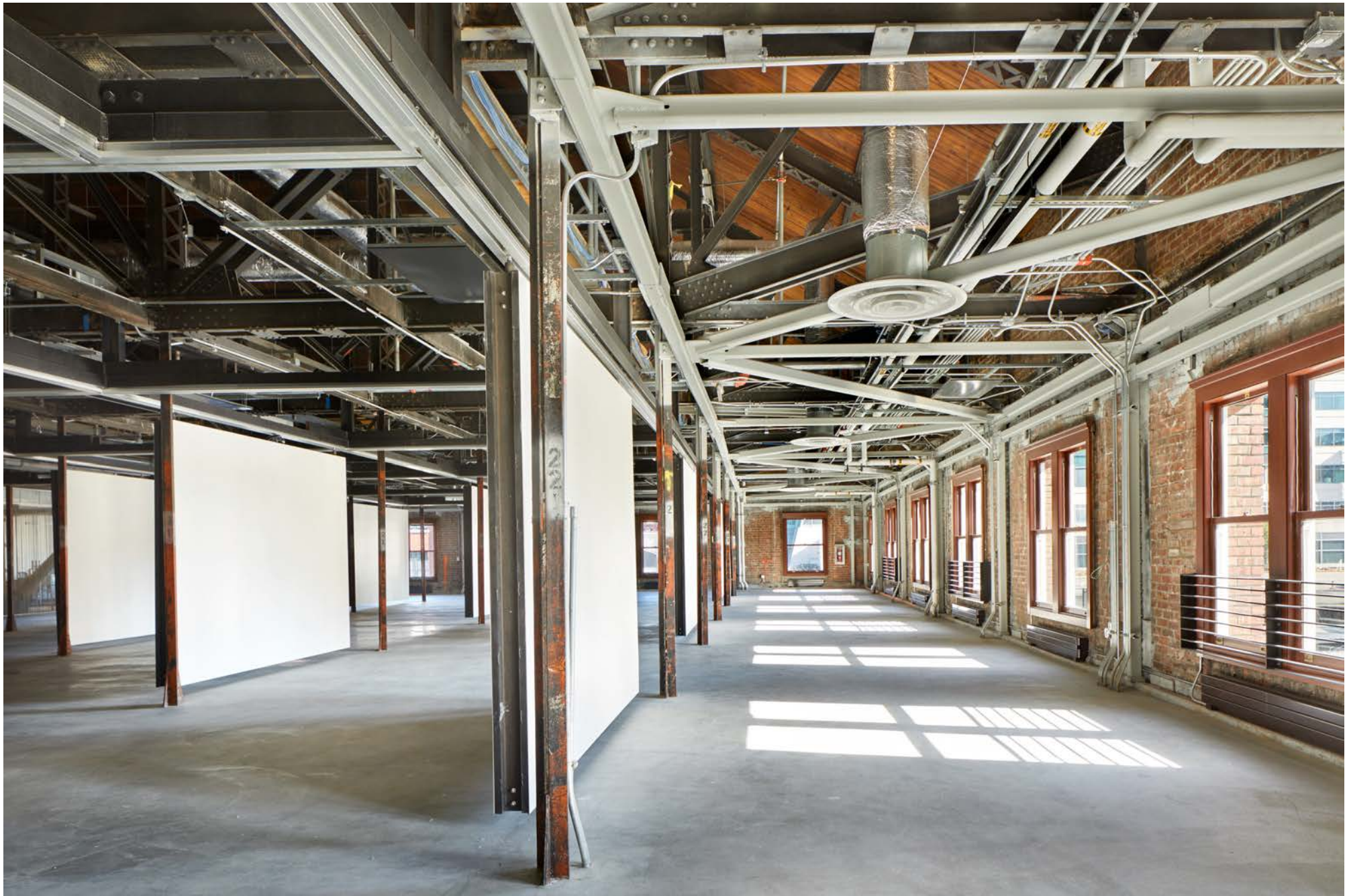
**ARTS at King Street Station** | Cultural Space, view of high ceiling | Photography by Benjamin Benschneider





**ARTS at King Street Station** | Cultural Space with sample gallery wall configuration | Photography by Benjamin Benschneider





**ARTS at King Street Station** | Cultural Space with sample gallery wall configuration | Photography by Benjamin Benschneider





**ARTS at King Street Station** | Cultural Space with sample gallery wall configuration | Photography by Benjamin Benschneider





**ARTS at King Street Station** | Cultural Space with sample gallery wall configuration | Photography by Benjamin Benschneider





**ARTS at King Street Station** | SCultural Space with sample gallery wall configuration | Photography by Benjamin Benschneider















**ARTS at King Street Station** | Large Gathering Room | Photography by Benjamin Benschneider





**ARTS at King Street Station** | Large Gathering Room | Photography by Benjamin Benschneider











**ARTS at King Street Station** | Second Floor Balcony ( Jackson Street level ) | Photography by Benjamin Benschneider