

Seattle Parks and Recreation Updates

Urban Forestry Commission Presentation

December 2, 2020

Seattle Parks and Recreation



City of Seattle

Overview

Cover Today:

- SPR department updates
- Viewpoint Policy
- Cheasty Bike Trail Project
- Colman Vegetation Management Plan
- Green Seattle Partnership

Future Update:

- SPR Tree Policy
- Supplemental Use Guidelines for Natural Areas/Greenbelts



SPR 2020 Updates

SPR: Before the Outbreak

- ✓ Mission: *Seattle Parks and Recreation provides welcoming and safe opportunities to play, learn, contemplate and build community, and promotes responsible stewardship of the land. We promote healthy people, a healthy environment, and strong communities.*
- ✓ Vision: Healthy People, Healthy Environment, Strong Communities
- ✓ 6,400 acres
- ✓ 485 parks
- ✓ 26 community centers, 8 indoor pools, 4 golf courses and much more
- ✓ Robust and vital recreation programs for people of all ages
- ✓ 900 FT employees organized in 7 divisions



SPR 2020 Updates

SPR: Responding to the Outbreak

- ✓ New - and sudden - focus on City and region's response to impacts of COVID-19
- ✓ Activated already existing Incident Command Team and Continuity of Operations Plan (emergency management)
- ✓ Normal functions transformed to **Mission Essential Functions**
- ✓ Part of citywide team, headed by Mayor, guided by public health data



SPR 2020 Updates

Mission Essential Functions

- ✓ Providing emergency shelter facilities and staffing
- ✓ Supporting emergency food programs
- ✓ Supporting emergency childcare for essential workers
- ✓ Financial management, including payroll, vendor payment
- ✓ Comfort station maintenance and cleaning
- ✓ Landslide/environmental hazard response
- ✓ HR support for all SPR employees
- ✓ Maintaining essential life safety systems
- ✓ Daily cleaning, litter and garbage removal
- ✓ Providing agency leadership/situational awareness
- ✓ Active asset management and maintenance
- ✓ Navigation team outreach (homeless individuals)



SPR Viewpoints

Background

- Vegetation Management Plan - 2005
- Viewpoint Designation Policy - 2006
- Viewpoint Task Force Recommendations - 2018

SEATTLE PARKS AND RECREATION

**Vegetation Management
For Seattle Parks Viewpoints**

**Revised DRAFT
April, 2005**


Louisa Boren Viewpoint

Belvedere Viewpoint

Dr. Jose Rizal Viewpoint

Original Draft by: **Kathleen Day, Landscape Consultant**
1816 NE Ravenna Blvd.
Seattle, Washington 98105
206-522-2075 kathleen.day@comcast.net

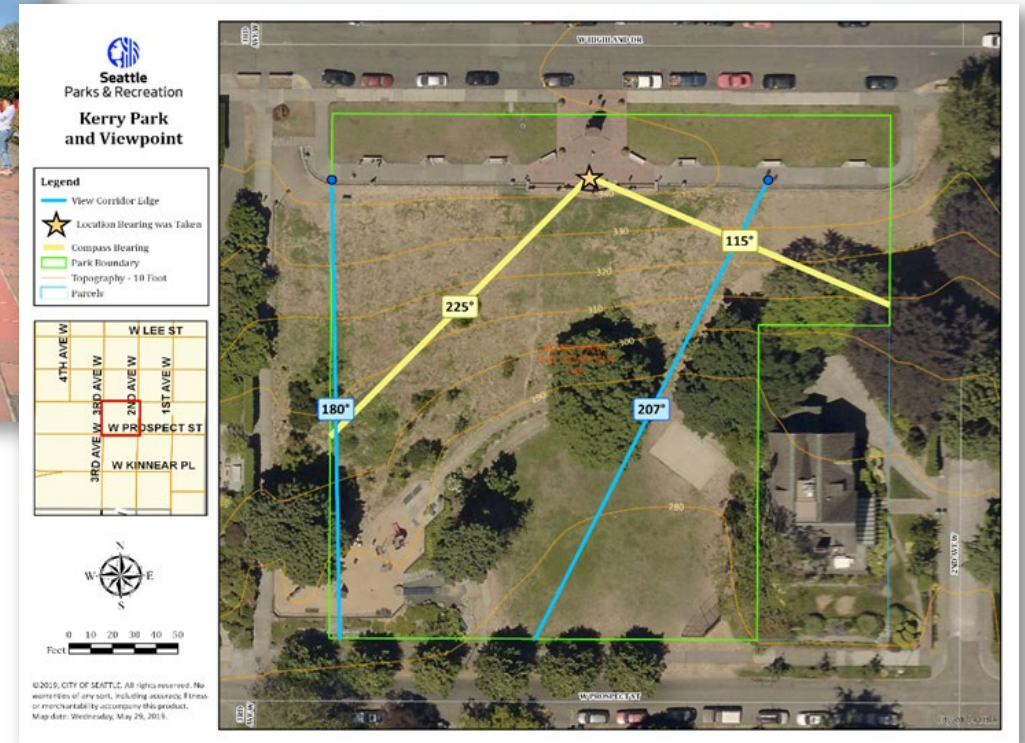
Revisions by: **Mark Mead, Senior Urban Forester**
Seattle Parks and Recreation
206-684-4113 mark.mead@seattle.gov

Department Policy & Procedure			
Subject:		Number 060-P 2.17	
Viewpoint Designations		Effective 6/8/06	
		Supersedes	
Approved:	Department: Parks and Recreation	Page 1 of 3	

SPR Viewpoints

Examples

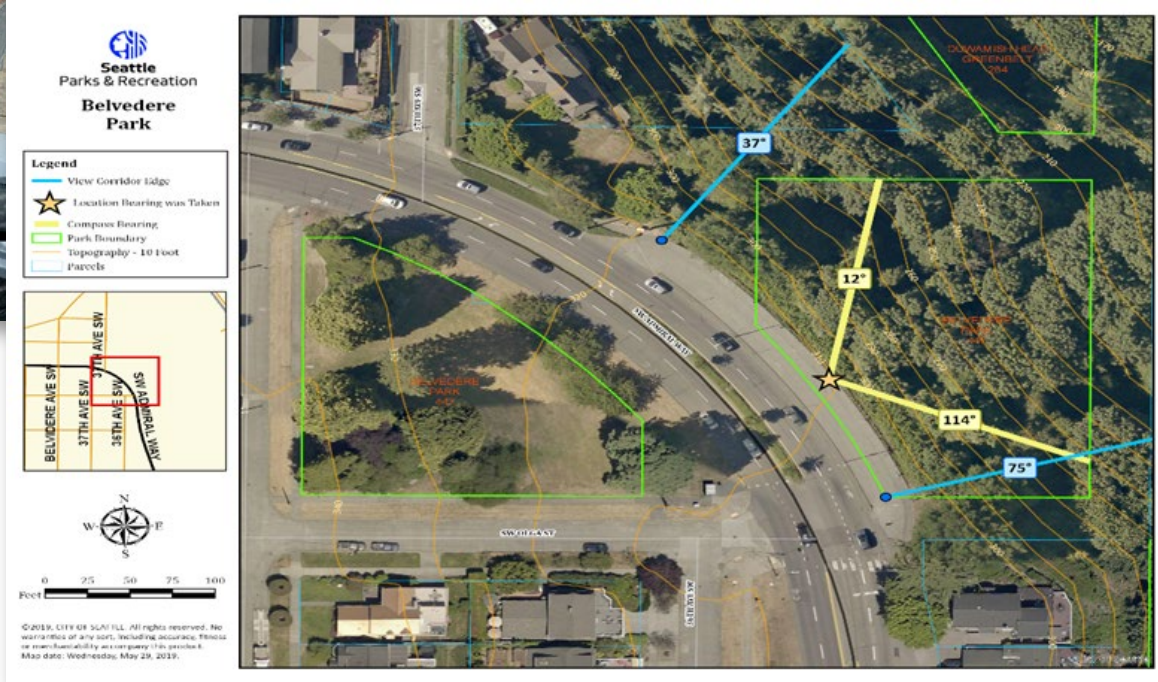
Kerry Viewpoint, Queen Anne



SPR Viewpoints



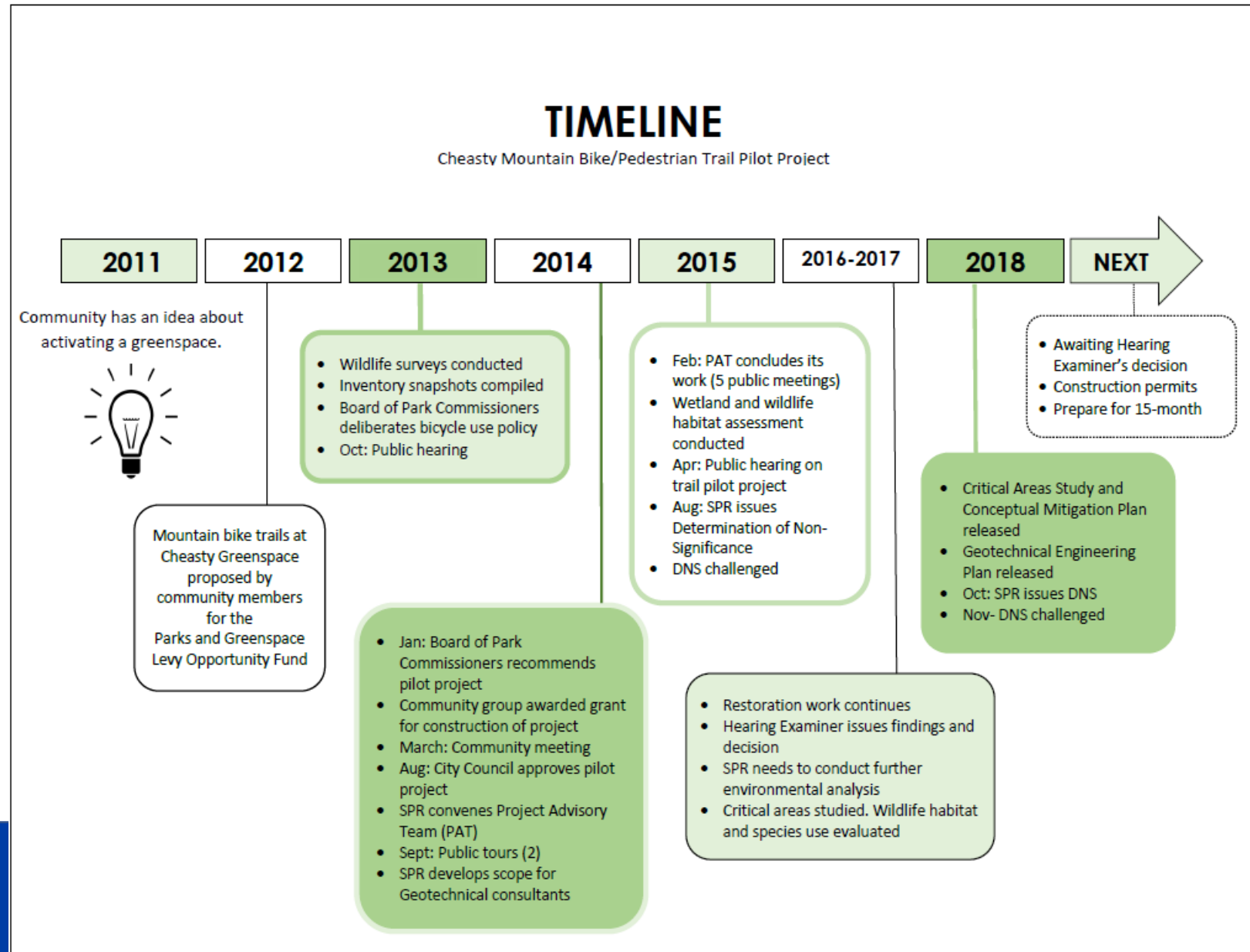
Belvedere Park,
West Seattle



Cheasty Mountain Bike and Pedestrian Trail Project

Background

- Last UFC briefing December 2018
- Two-phase approach



Cheasty Mountain Bike and Pedestrian Trail Project

Current Status

- South Loop phase
 - Plan finalized; SDCI permit pending
 - Construction spring 2021
- North Loop phase
 - Finalize plan in 2020-21
 - Construction likely 2022



Colman Park

Current status

- GSP restoration
 - Zones throughout park
 - Upper slope



Colman Park

Upper Slope Restoration

- Invasive removal starting fall 2018
- Planting starting 2019
- Slope protection

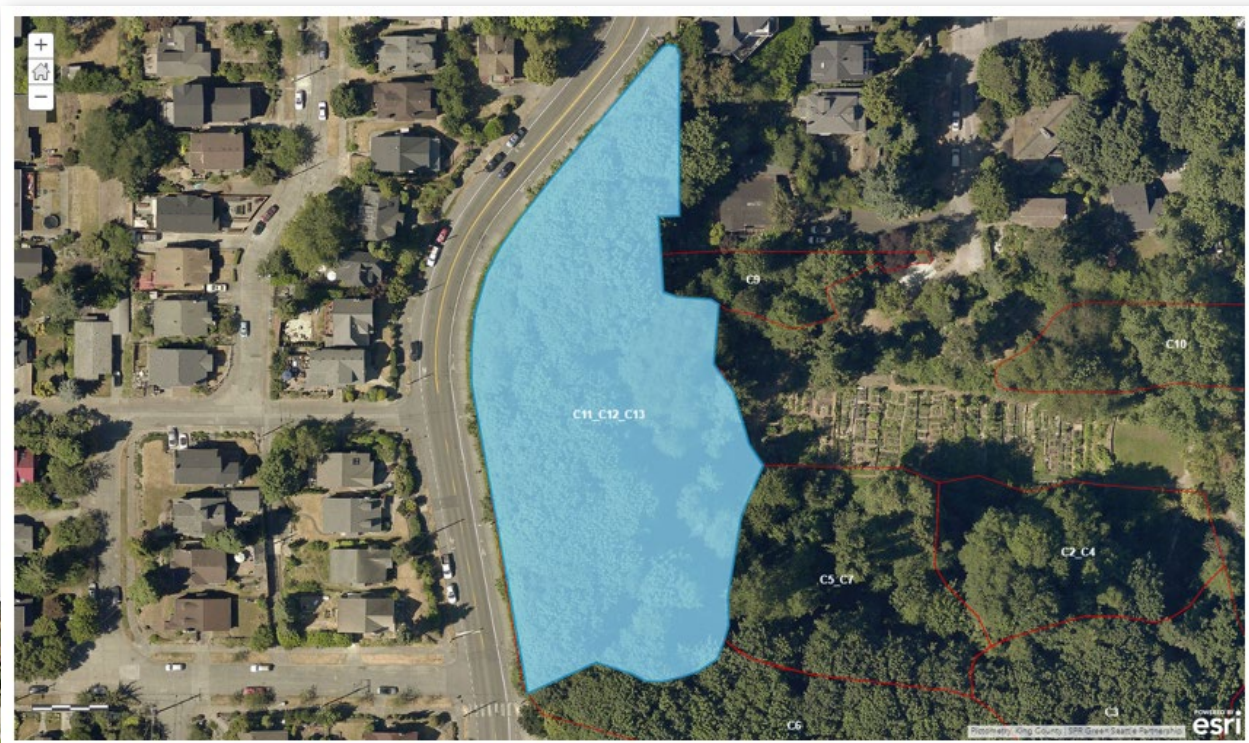
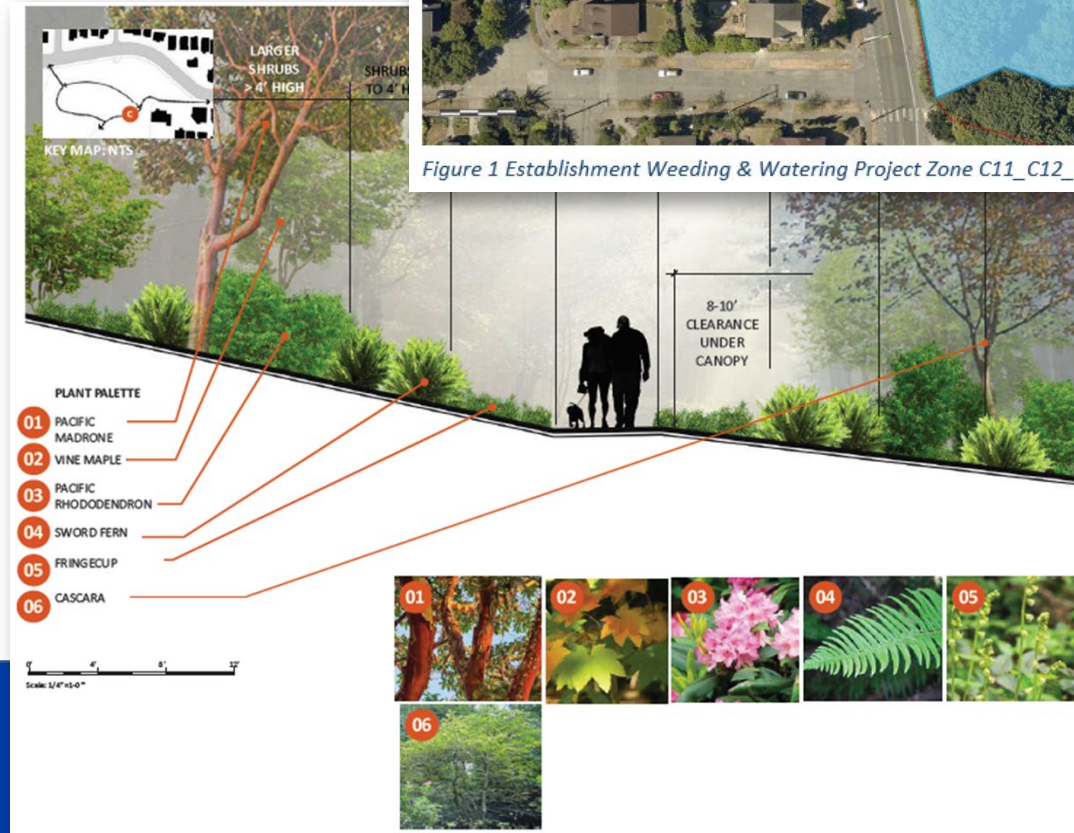


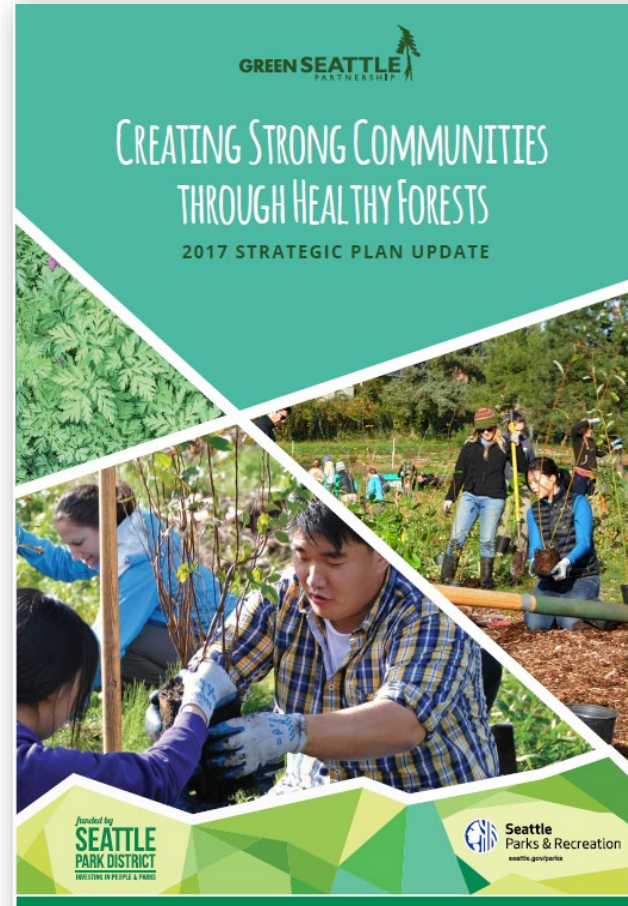
Figure 1 Establishment Weeding & Watering Project Zone C11_C12_C13



Green Seattle Partnership

Background

- 2017 UFC Briefing
- Strategic Plan Update
- Further analysis needed



Green Seattle Partnership

2019 update

- Park District planning
- Funding shift
- SLI request



SLI Report

- Lessons learned, challenges
- City, community investments
- New priorities and long-term planning
- Other community benefits

→ Opportunity for revisioning, engaging with partners and community to identify and maximize full program benefits



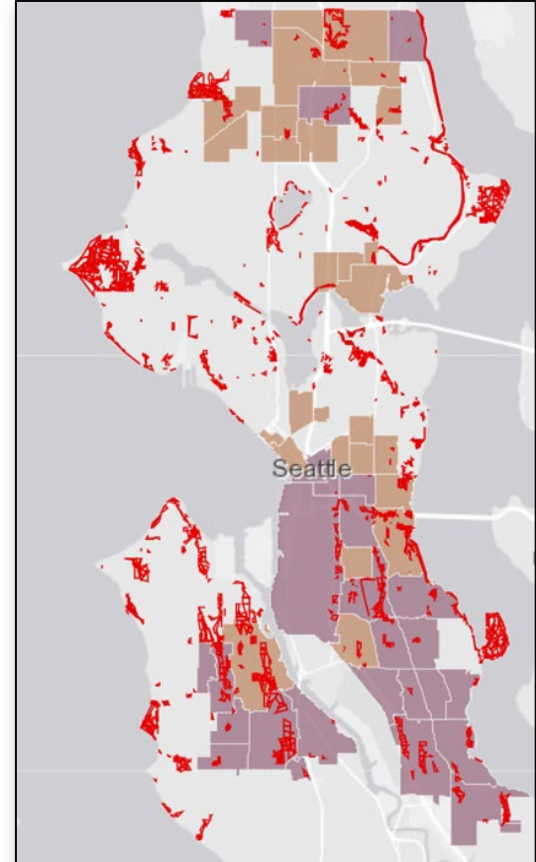
Date: September 29, 2020
To: Debora Juarez, Seattle City Council Chair, Public Assets and Native Communities

From: Jesús Aguirre, Director, Seattle Parks and Recreation
Michele Finnegan, SPR Policy Director

Subject: Statement of Legislative Intent: **SPR-6-A-2: GSP PROGRAM EVALUATION**

TABLE OF CONTENTS:

- A. SLI OVERVIEW
- B. PROGRAM BACKGROUND
- C. CITY AND PARTNER INVESTMENTS
- D. LESSONS LEARNED SINCE PROGRAM INCEPTION
- E. NEW PRIORITIES/LONG TERM PLANNING
- F. APPENDICIES: COMMUNITY BENEFITS
 1. EQUITY PRIORITIZATION
 2. YOUTH ENGAGEMENT
 3. GREEN JOB TRAINING
 4. FOREST STEWARD PROGRAM
 5. CONTRACTING
 6. CLIMATE CHANGE RESILIENCY
 7. EXTENDED BENEFITS
 8. CROSSWALK TO SLI



Legend

GSP Zone Boundaries



Racial and Social Equity Composite Index

Second Highest Disadvantage

Highest Disadvantage

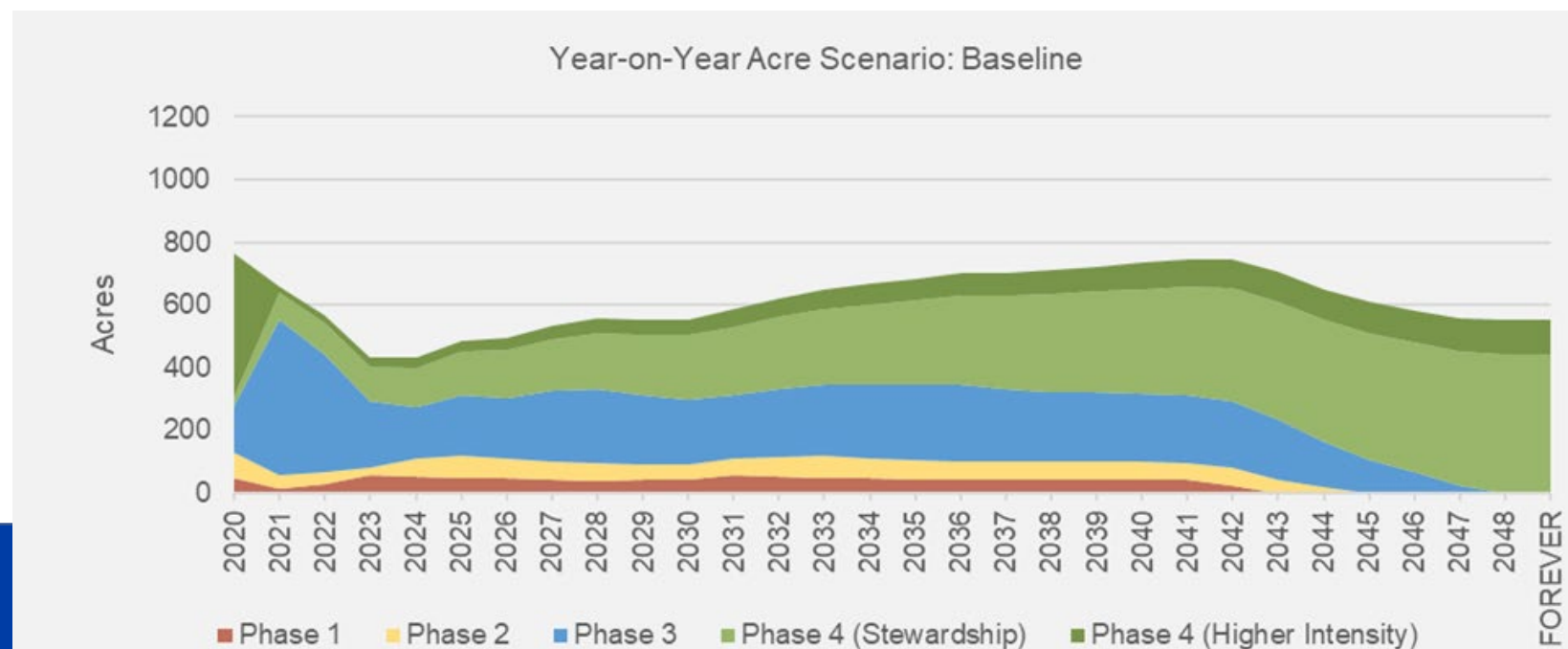


Analyses results

- Acres status
- Timeline

Phase	Total Acres per Phase	Wetland %	Steep Slope (> 40%) %	Steep Slope (> 66%) %
0	966	8%	49%	13%
1	264	9%	44%	10%
2	231	7%	37%	7%
3	870	7%	25%	5%
4	423	8%	26%	5%
Total	2754	8%	36%	9%

Scenario	All Enrolled Year (Phase 1)	All Restored Year (Phase 4)	Number of Years +/- Original Goal
Baseline Funding	2042	2048	17



Green Seattle Partnership

Current outlook

- 2020
 - COVID impacts
 - Resulting budget
- 2021-2023 - continued impacts
 - Volunteer engagement
 - Funding



Thank You!



Seattle
Parks & Recreation

healthy people healthy environment strong communities

