



CHEASTY

TRAILS AND BIKE PARK





Friends of Cheasty Greenspace



at Mountain View

- Founded in 2008
- Green Seattle Partnership Program
- 160k Neighborhood Matching Grants
- 12 person Steering Committee
- 7 Years Monthly work parties
- 12,000 hrs Volunteer hrs
- 10+ acre restoration, built trails
- 2013 Denny Award Recipients



43 ACRES
ADJADENT TO URBAN VILLAGE
MAJOR TRANSIT CORRIDOR

TRAIL MASTER PLAN



10 ACRES



RECLAIM



RESTORE



REIMAGINE



RECONNECT



MT. BIKE PILOT PROJECT

- Seattle Parks Board of Commissioners Approval on January 9, 2014
- Fall 2014-Winter 2015 Project Advisory Team
- Spring 2015 - Design Approval
- Summer/Fall 2015 Trail Construction





TRAILS

A photograph of a forest scene. In the foreground, there are several thin, light-colored tree trunks and branches, some of which are covered in dense, green ivy. The background is filled with a thick canopy of green trees, creating a lush, dense forest environment. The lighting is soft, suggesting an overcast day.

ENGLISH IVY

GARBAGE





HUMAN IMPACTS



HUMAN IMPACTS

GROSS





NOT GROSS

- Cheasty is #2 Volunteer Park in 2014
- 1,609 Volunteers, 5187 hours
- Large work parties - Earth Gay, REI Anderson Award, Starbucks, Seattle Pacific University, Love Parks Day, Mercer Middle School, Jefferson Park High School, Refugee Women's Alliance
- 15 Green Seattle Partnership Forest Stewards
- Planted over 1000 native trees and shrubs



VOLUNTEER DRIVEN



Key





- Pedestrian Start Point
- Destination
- Current Walking Route
- Unsafe Route
- Undeveloped Route

Cheasty Trails + Bike Park
COMPREHENSIVE TRAIL PLAN

**Pedestrian Movement
From New Rainier Vista
to Beacon Hill**



Key

-  Pedestrian Start Point
-  Destination
-  Current Walking Route
-  Unsafe Route

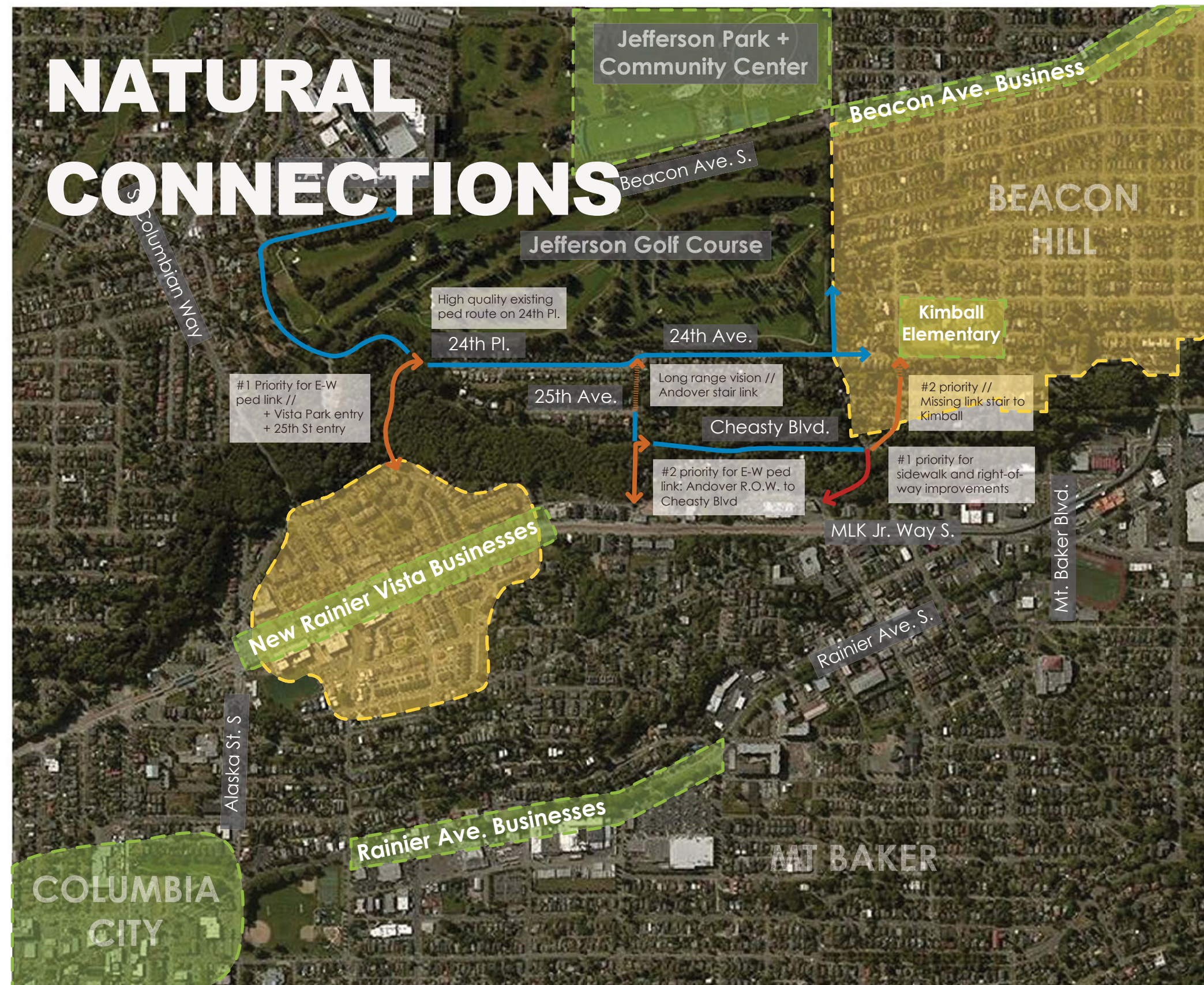
Cheasty Trails + Bike Park
COMPREHENSIVE TRAIL PLAN

**Pedestrian Movement
From Beacon Hill
to Rainier Valley**

NATURAL CONNECTIONS

Key

-  Pedestrian Start Point
-  Destination
-  Proposed Ped Trail Link
-  Proposed Sidewalk Improvements
-  Proposed Stair
-  Existing Safe Pedestrian Route



Cheasty Trails + Bike Park
COMPREHENSIVE TRAIL PLAN

**Proposed East-West
Pedestrian Links**

Jefferson Golf Course

Key //

Pedestrian Lane

Bike Lane

Combined Use Segment

Accessible Trail

Bridge or Boardwalk

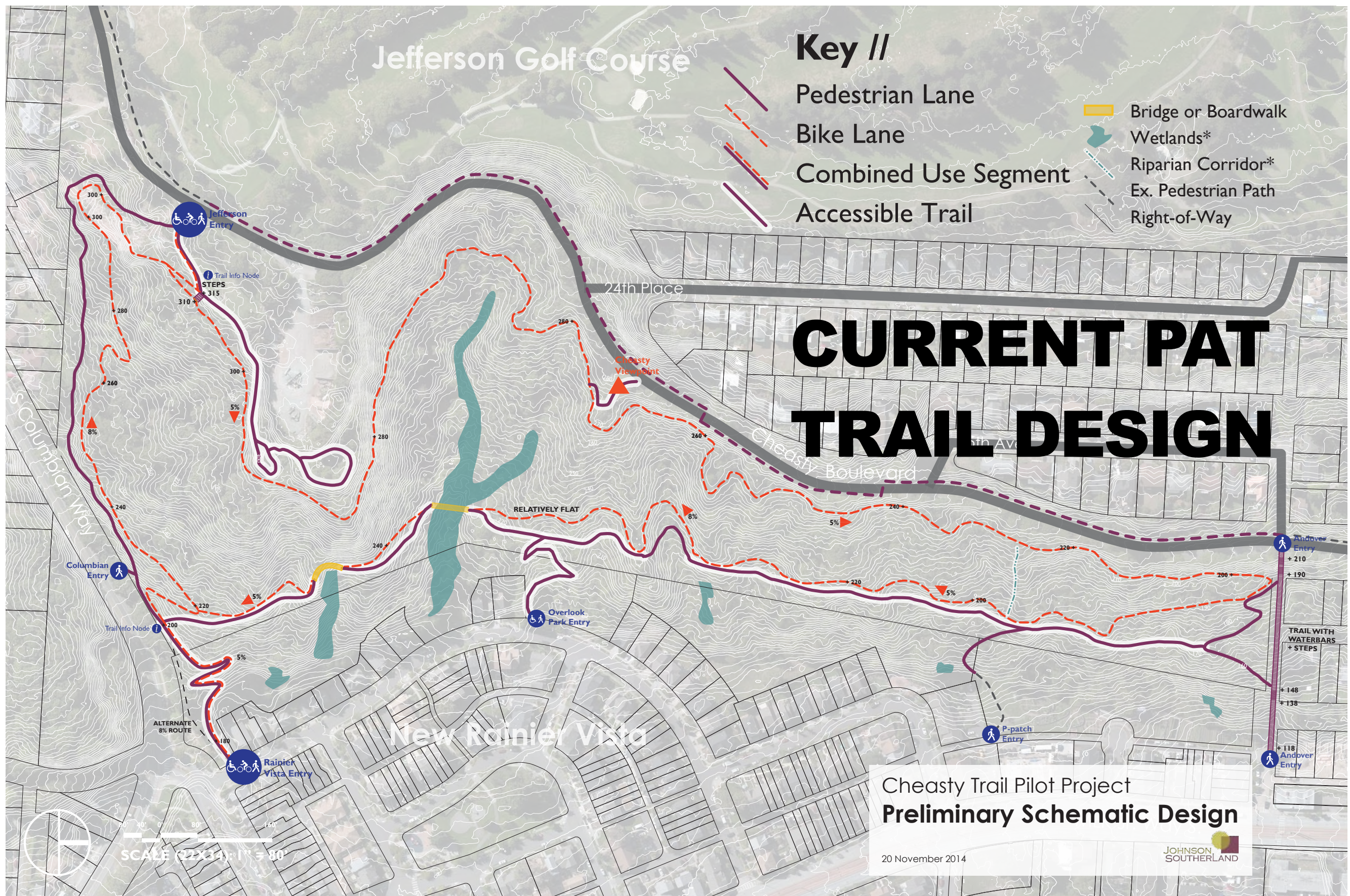
Wetlands*

Riparian Corridor*

Ex. Pedestrian Path

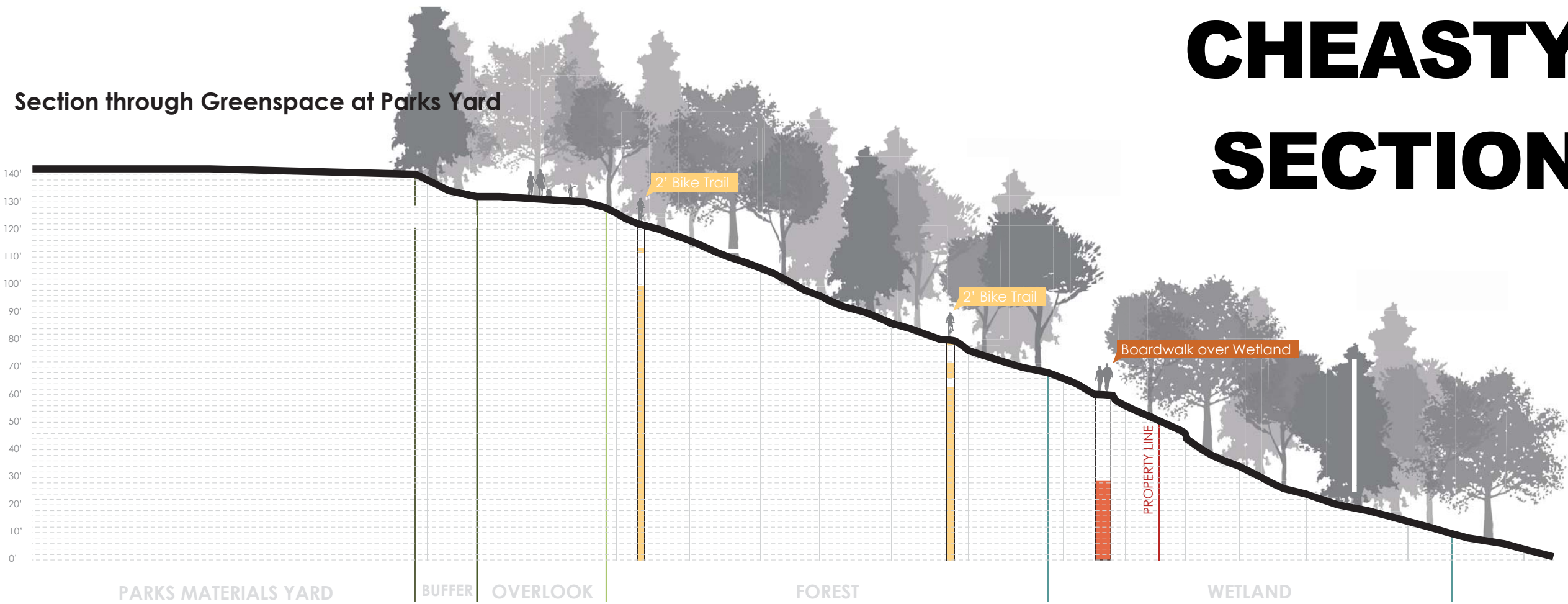
Right-of-Way

CURRENT PAT TRAIL DESIGN



CHEASTY SECTION

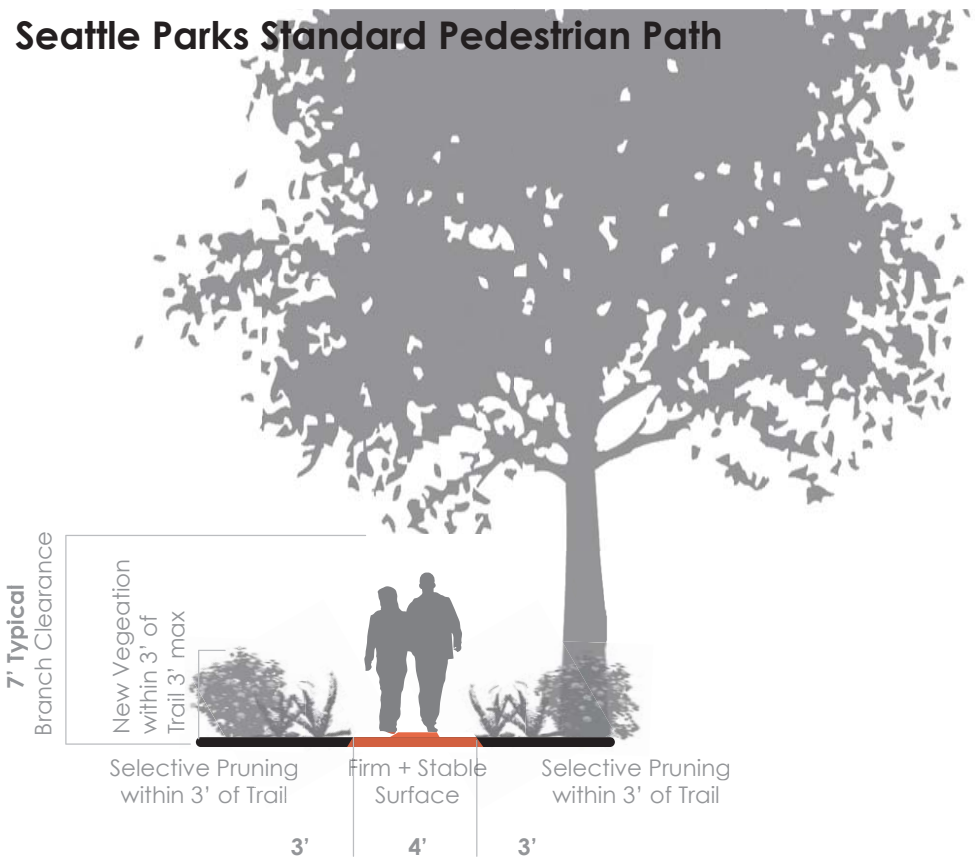
Section through Greenspace at Parks Yard

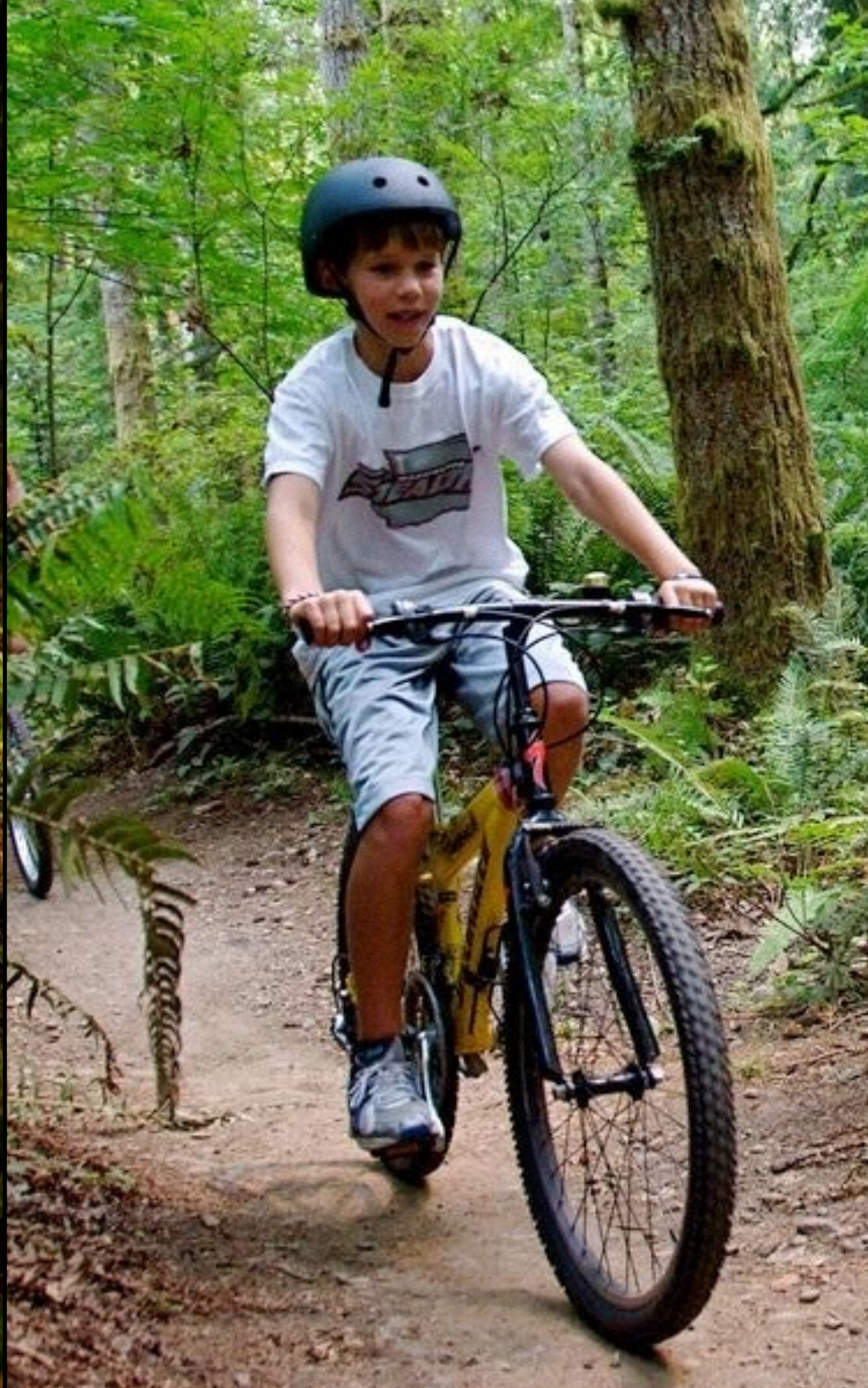


Section showing typical relationship between trails



Seattle Parks Standard Pedestrian Path







**ACCESS + RECREATION
= STEWARDSHIP & CONSERVATION**