

Seattle reLeaf Update

Seattle reLeaf
keep the emerald city green



Tree Ambassador Growth



- Adding around 50 new volunteers in 2014
 - Tree Walks
 - Landscape Renovation
 - Street Tree Stewardship



Tree Ambassador Growth



- Engaged 226 people in 11 events and trainings so far this year
 - 5 Tree Walks
 - 2 Mulching Events



Work Plan for 2014



Tree Ambassador:

- Wrap up new volunteer trainings
- Support volunteer projects
- Provide ongoing workshops for volunteers
- Hold public Tree Walks at least every other month
- Annual volunteer picnic



Work Plan for 2014



Trees for Neighborhoods:

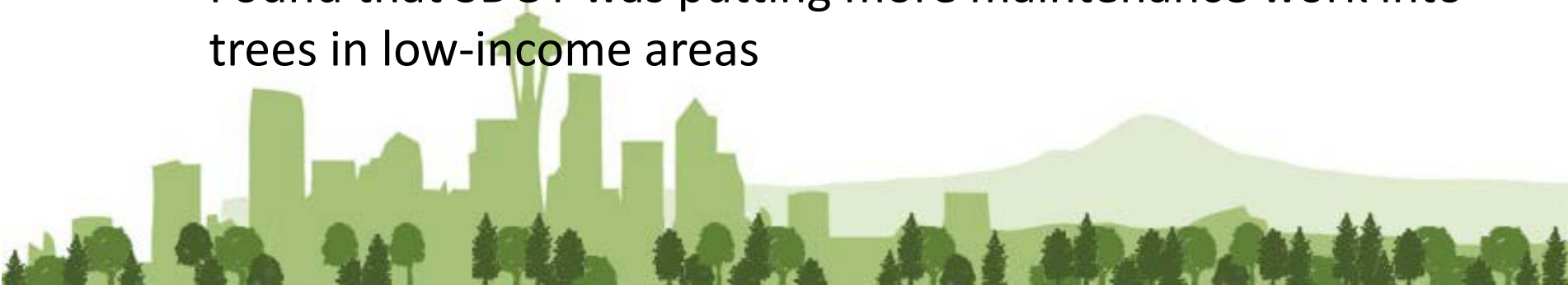
- Bring new staff on board
- Plant 1,000 trees with 300 residents
- Provide watering reminders and pruning workshop to past participants



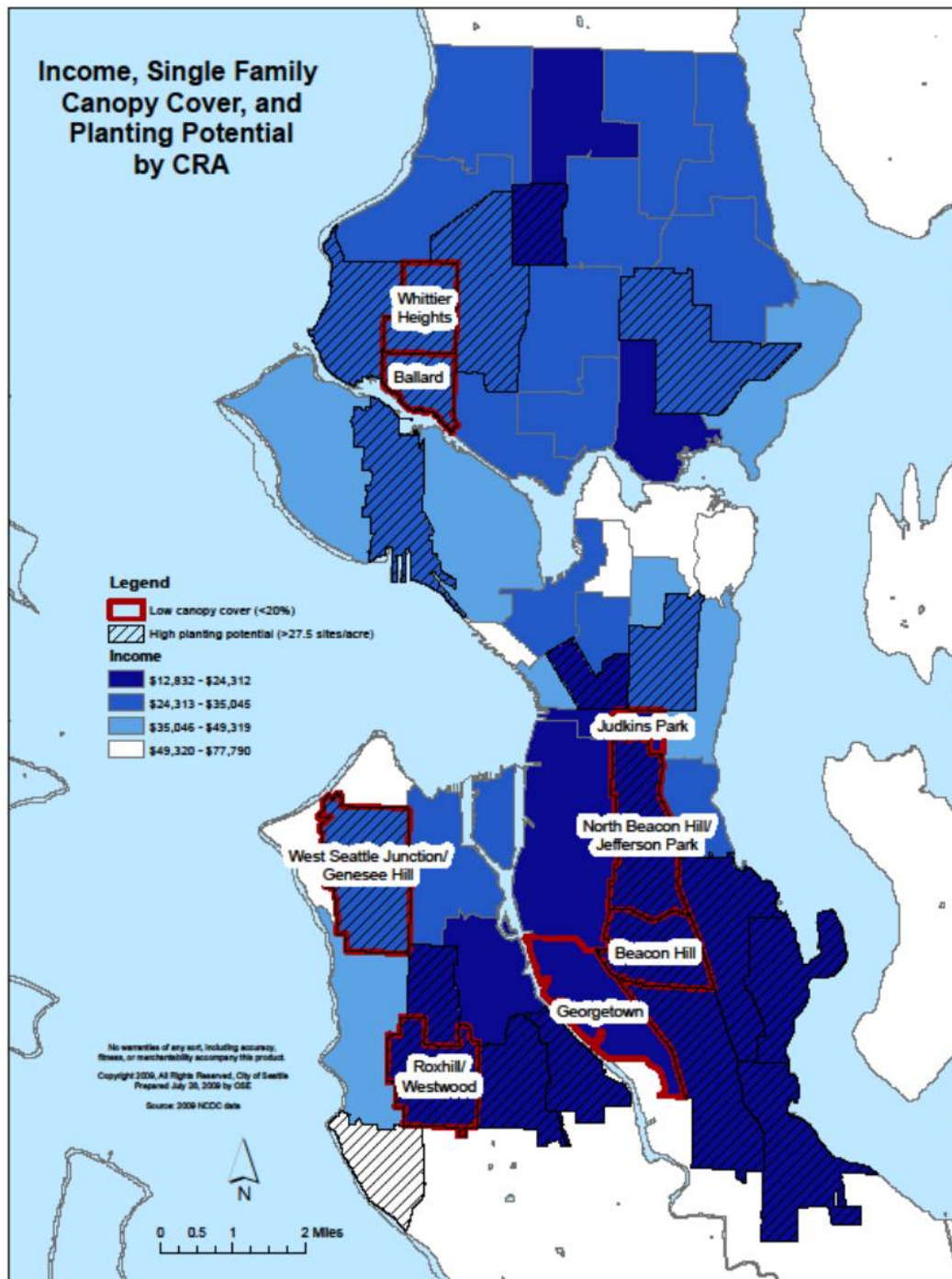
Urban Forest Equity



- 2004 UW thesis study, Ara Erickson
 - Equity in Urban Forest Management: An assessment of street tree condition, maintenance, and neighborhood income levels in Seattle, WA
 - Did **NOT** look at distribution of trees
 - Did look at condition of existing street trees
 - Did not find a difference in condition of trees between high and low income census tracts
 - Found that SDOT was putting more maintenance work into trees in low-income areas



Income, Single Family Canopy Cover, and Planting Potential by CRA



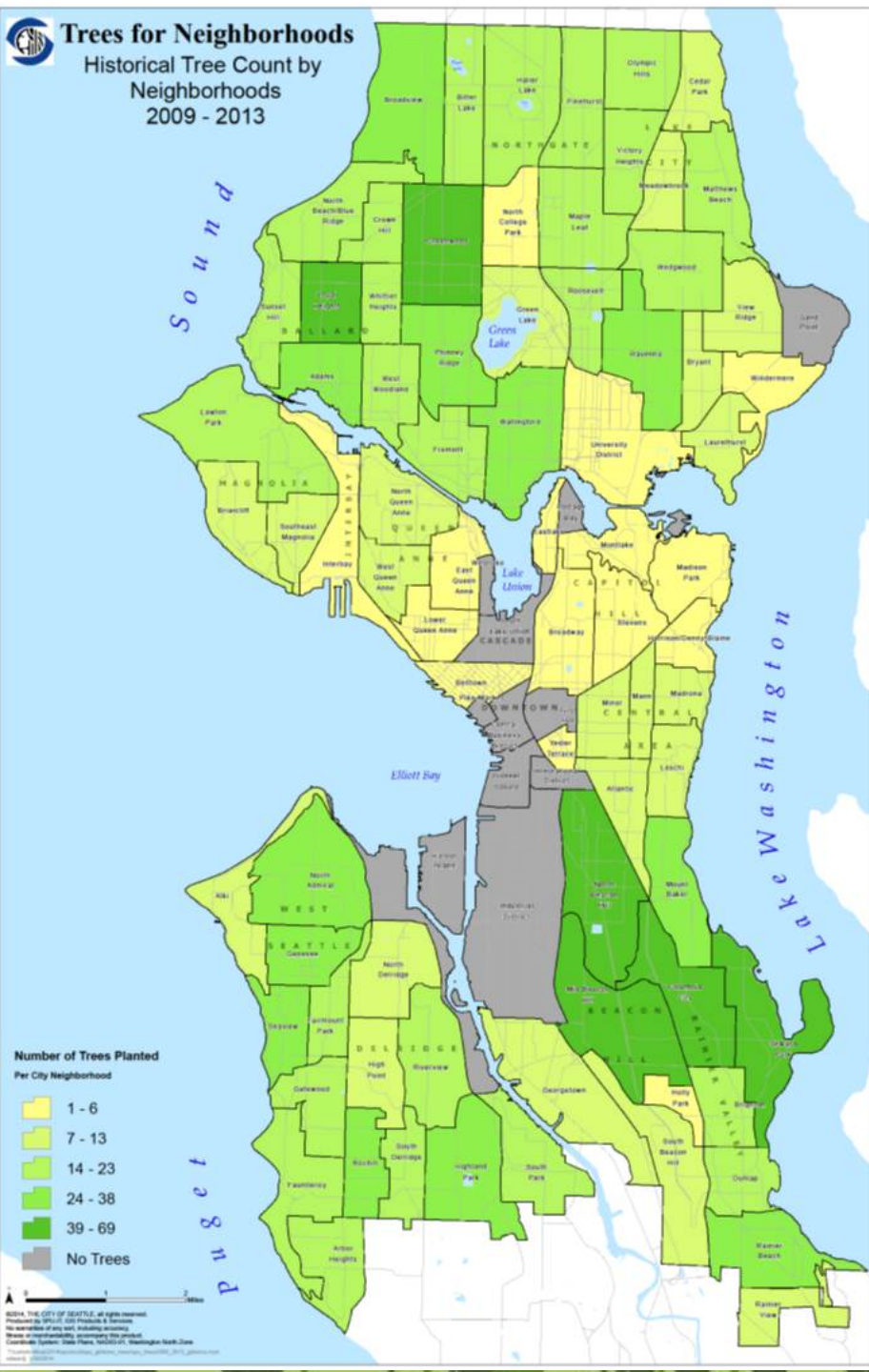
Seattle reLeaf
keep the emerald city green





Trees for Neighborhoods

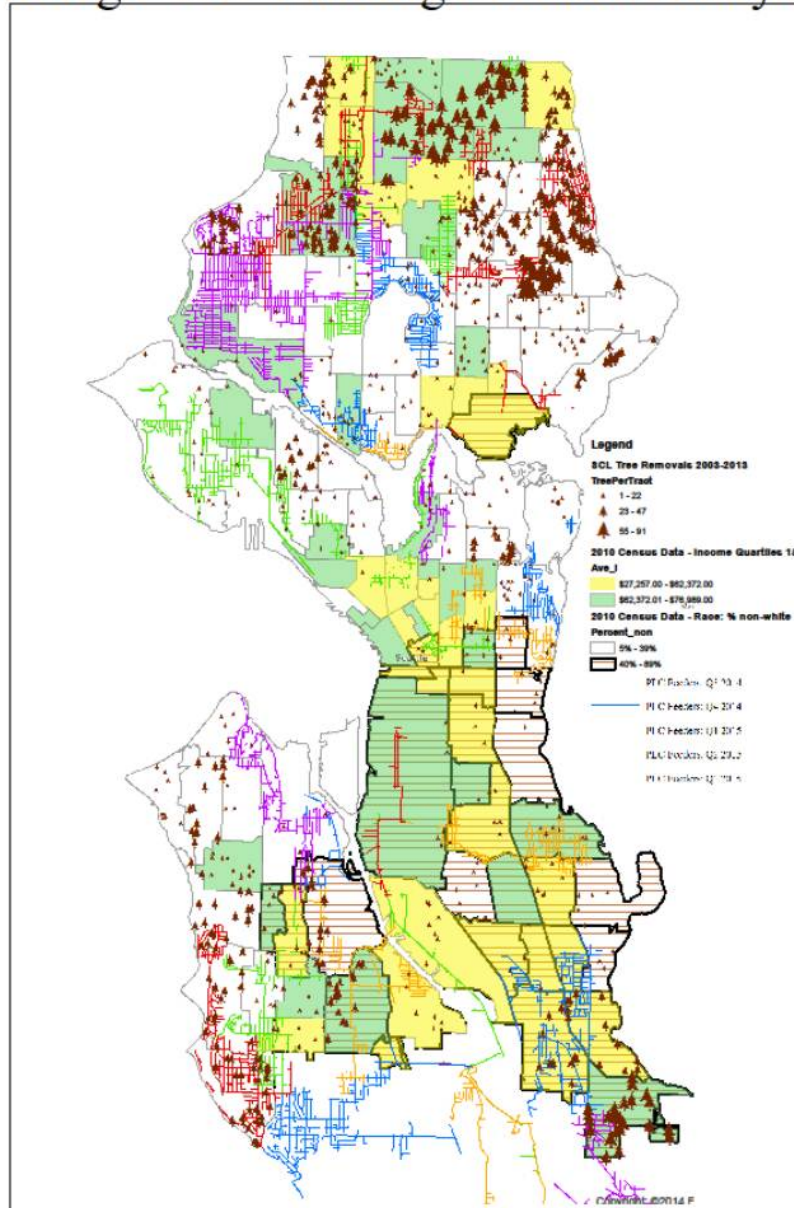
Historical Tree Count by
Neighborhoods
2009 - 2013



Seattle reLeaf
keep the emerald city green



2014-2015 Seattle City Light Strategic Tree Planting Location Analysis



Seattle reLeaf
keep the emerald city green



Seattle City Light

What reLeaf Is Doing



- Target outreach in underserved, low-canopy neighborhoods
- Provide additional staff support for volunteer events in target neighborhoods
- Training volunteers to plant trees for elderly and disabled residents
- Developing Tree Walks in target neighborhoods
- Working with SDOT and SCL to combine outreach around City's urban forestry efforts

