

Views are Part of Tree Management

Department Policy & Procedure

City of Seattle



Subject: **TREE MANAGEMENT, MAINTENANCE,
PRUNING AND/OR REMOVAL**

Number 060-P 5.6.1

Effective May 18, 2001

Supersedes 5.6.1 (3/14/75);
5.6.2 (4/22/75); and 5.6.3 (5/1/86)

Approved:

Department: Parks and
Recreation

Page 1 of 18

1.0 PURPOSE STATEMENT

To maintain, preserve and enhance the urban forest within parks. To increase the overall tree canopy, tree health and tree longevity within parks and to ensure that parks trees are managed in a manner that is consistent with other departmental and municipal policies.

Vegetation Management Criteria

Extent & Phasing

**History and existing
design**

**Soil and water
conservation**

Habitat improvement

**Limiting canopy
reduction**

Maintenance

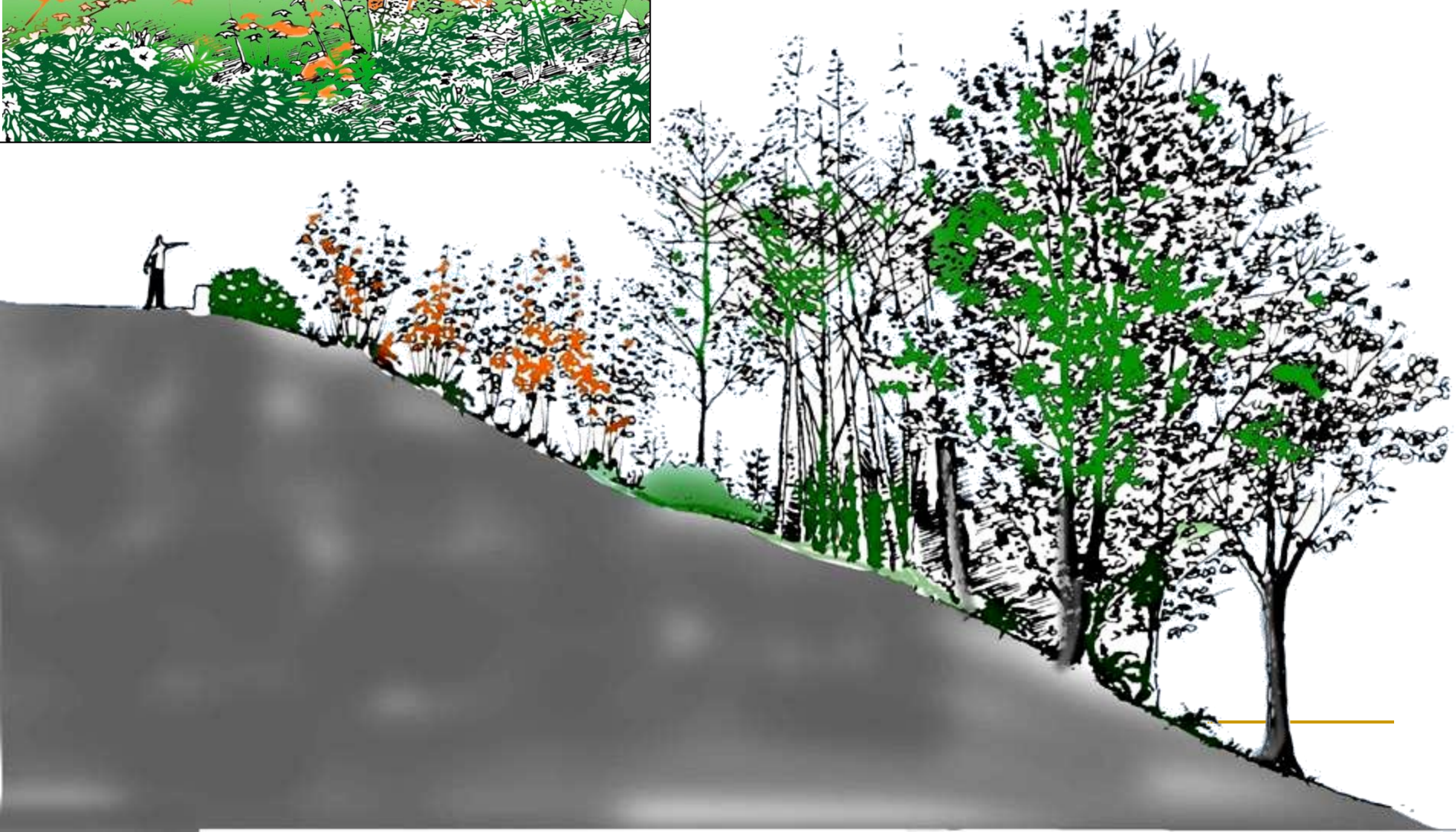
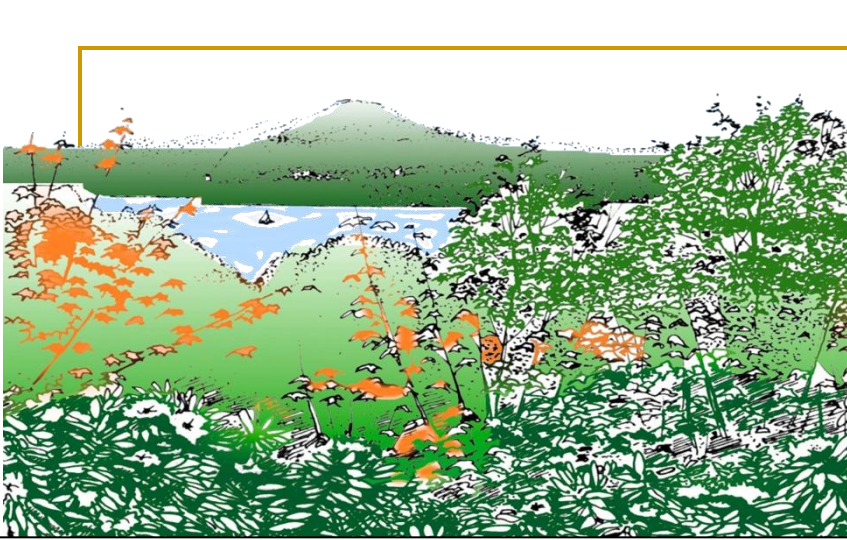
**Preference for native
vegetation**

**Controlling of
invasive exotic
vegetation**

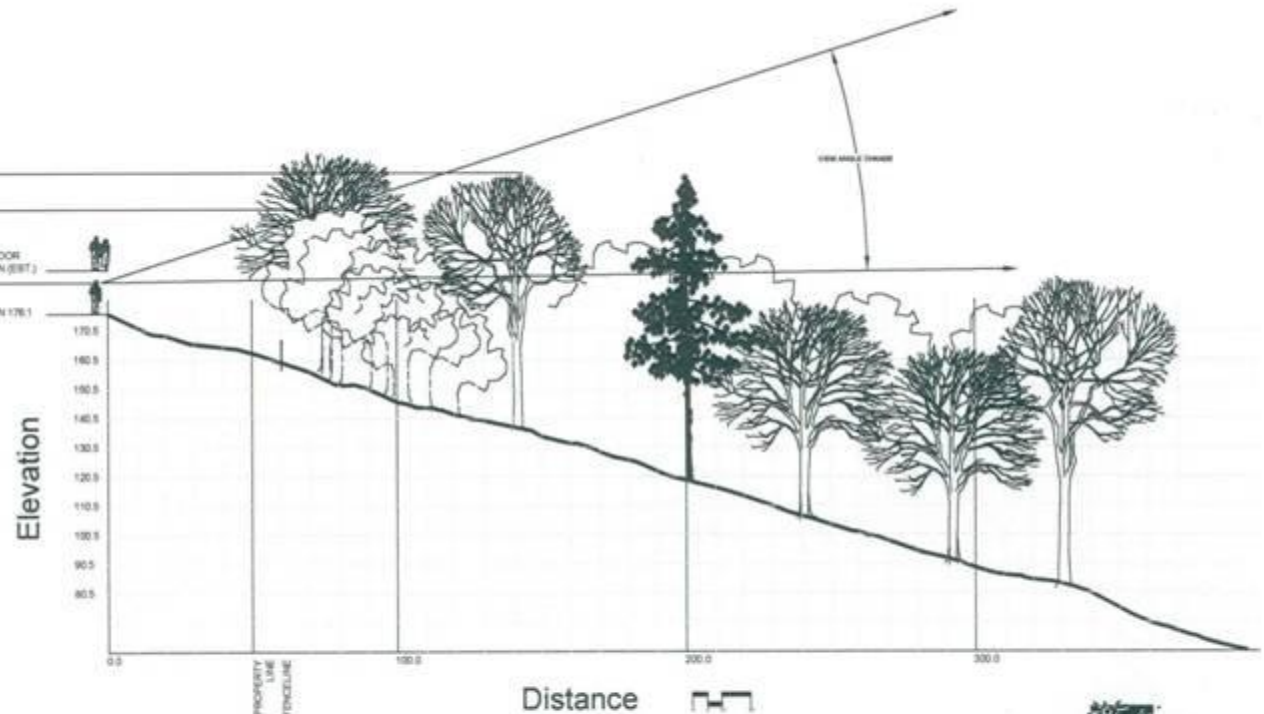
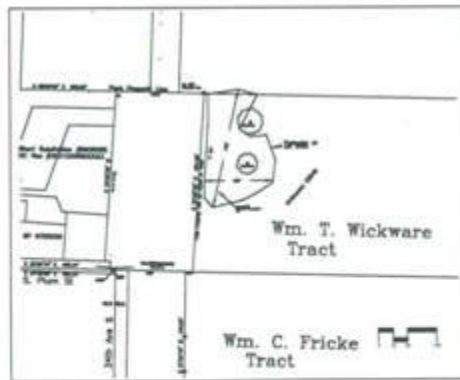
**Replacement of trees
and vegetation**



View Management



Getting the View Identified – Public versus Private



View Looking Northeast from Patio - Profile 1



Area Specific Removal and Trimming Guidelines



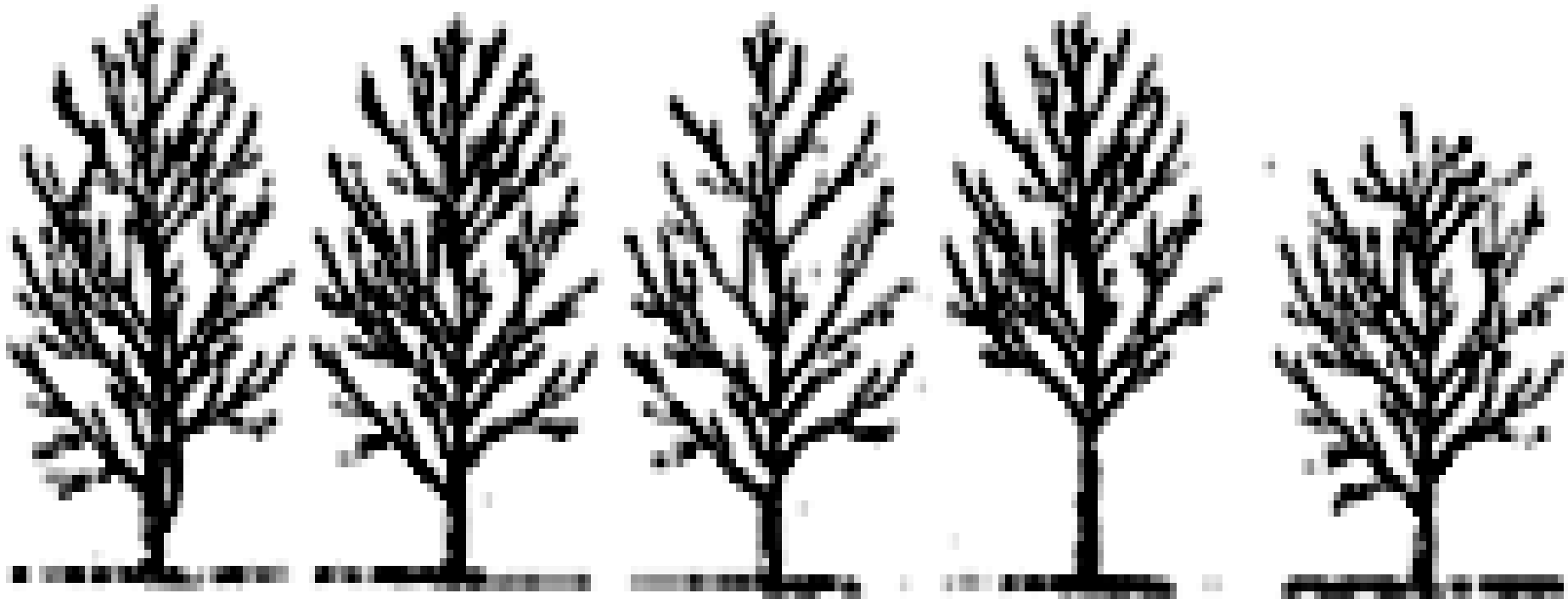
SEATTLE PARKS
AND RECREATION

Advances in Tree Care



Appropriate Pruning

Using correct methods to achieve a sustainable goal and a healthy tree



Before

**Crown
Cleaning**

**Crown
Thinning**

**Crown
Raising**

**Crown
Reduction**



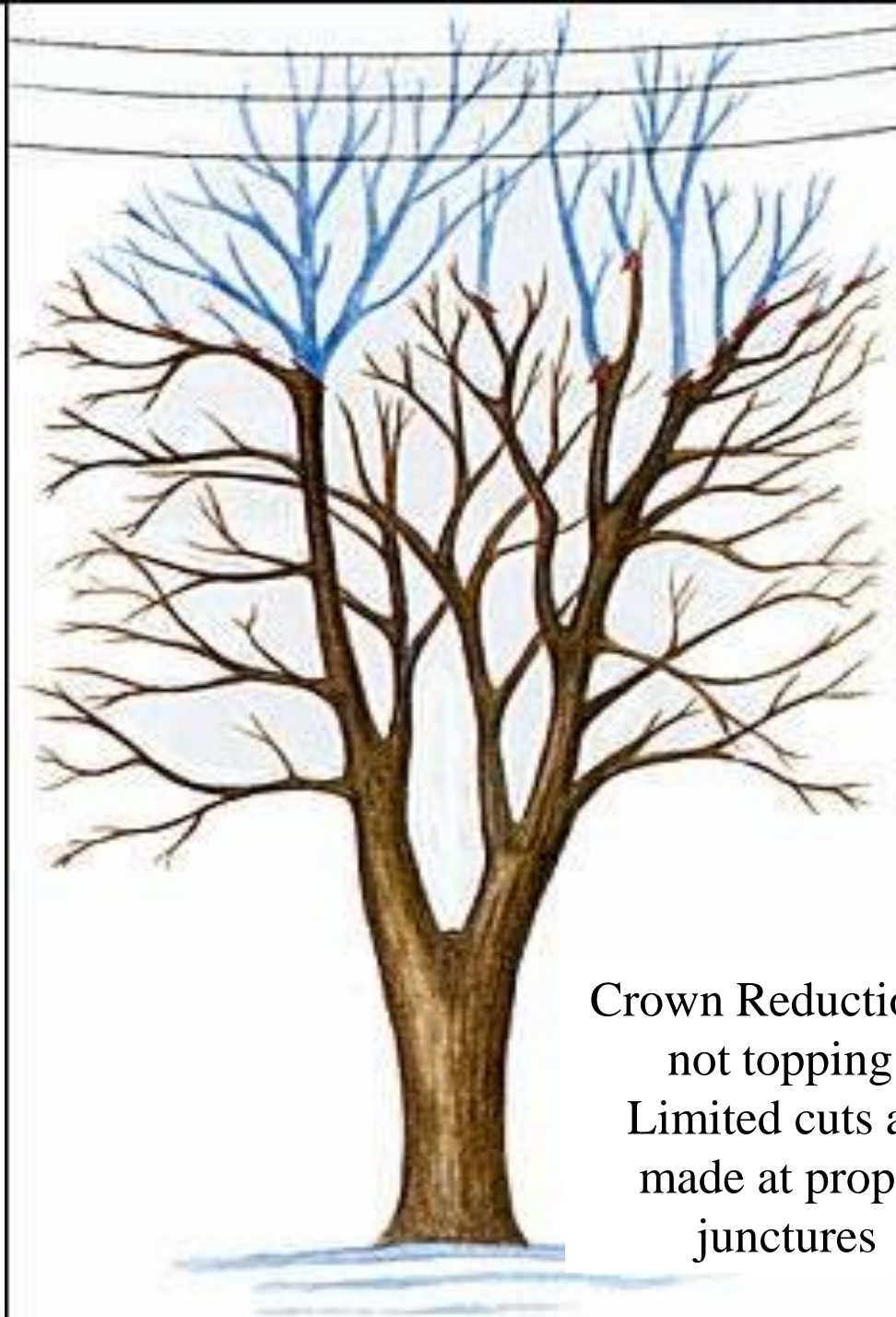
A. Safety



B. Health



C. Aesthetics



Crown Reduction is
not topping.
Limited cuts are
made at proper
junctures



Selective Stem Removal & Thinning

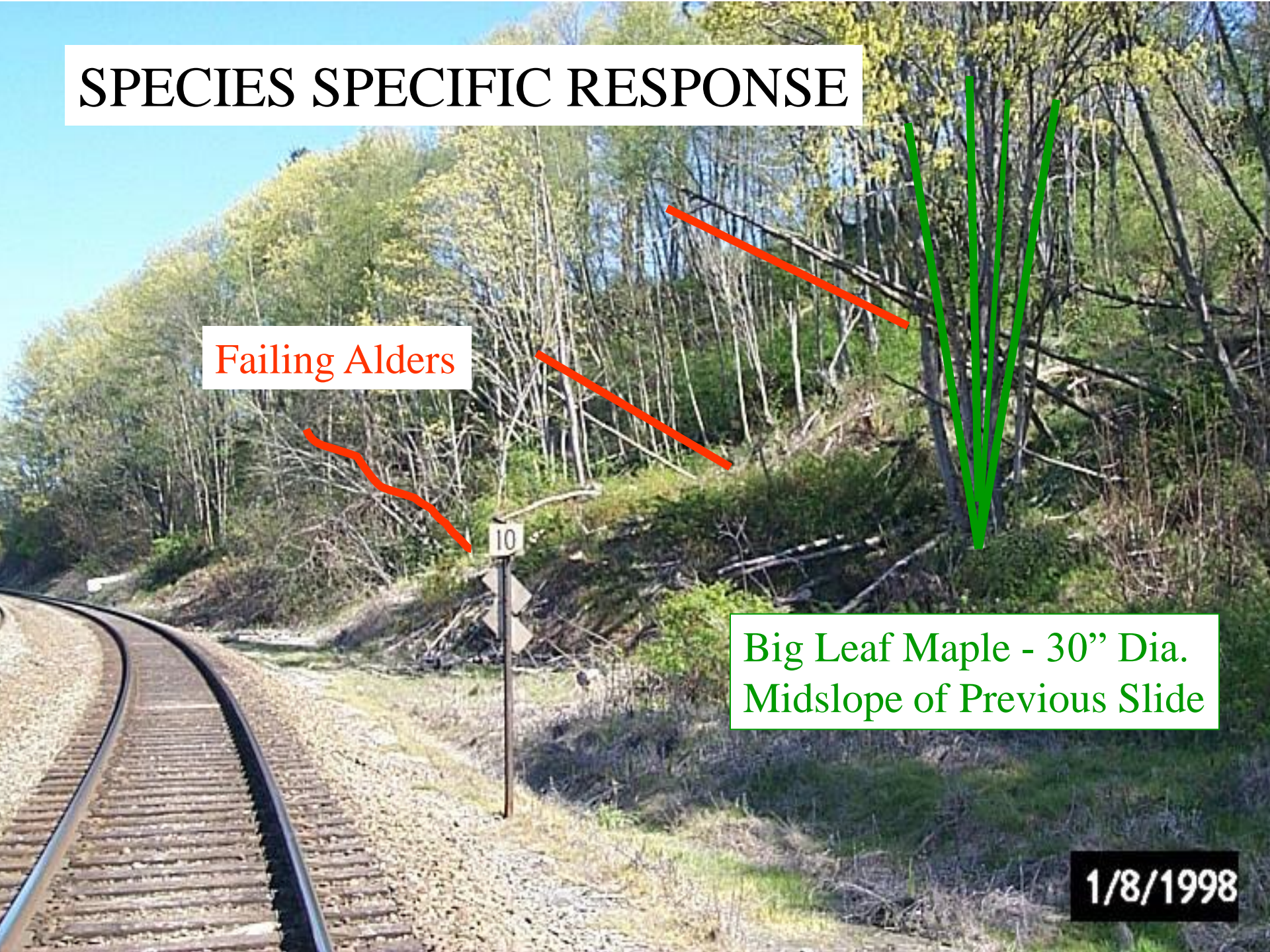


SPECIES SPECIFIC RESPONSE

Failing Alders

Big Leaf Maple - 30" Dia.
Midslope of Previous Slide

1/8/1998



Fracture Zone - Note Depth of Roots on Alders



1/8/1998



**Top of Slope
Zone-
32" Bigleaf
Maple
which has
severe trunk
decay and some
limb loss.**

1/8/1998



Invasive Plant Removal



Wildlife Habitat (Snags)

Slope Protection







TO E. TERRACE ST. & FRONT OF PROPERTY

SMITH
RESIDENCE
3411 E. TERRACE

HARLEY BROE - VEGETATION
MANAGEMENT PLAN (VMP)
19 JULY 2009

Botanical names of all species included
in copper plan and VMP:

High leaf maple
Hawthorn
English holly
Vine maple
Vine maple
Vine maple
Himalayan blackberry
Shorepine
Asian magnolia
Corylus cornuta
Des. asplenifolia
Des. asplenifolia
Des. asplenifolia
Polystichum monstrosa
Rhus glabra
Rhus glabra
Rhus glabra

3333 E. TERRACE
HARLEY BROE HOME

TERRACE STEPS
UP TO STREET
LEVEL

GRAVEL PATH

EXISTING GARDEN
TERRACE W/ BLOCK WALLS

SCALE: 1" = 12'

12

Trees:

- 1-5. Existing large hazelnuts covered with wild clematis
6. English holly to remove (noxious)
- 7., 8. Bigleaf maples to thin for increased sunlight to restoration area

Plan:

1. Clean entire area of invasive vegetation and create natural forested/woodland garden area
2. Remove all noxious, non-native vegetation; protect all desirable natives
3. Expose only as much topsoil as can be covered in an eight hour day.
4. Cover soil with double layer of erosion prevention fabric—bottom jute over mulch, sandwich layer of mulch, final layer of coconut (coir) fabric on top. Pin blanket layers tightly to contours with U-shaped steel rebar driven into soil tightly over re-cycled tree limbs placed laterally across slope.
5. First jute layer sufficient for night protection of bare soil.
6. Recycle maple limbs from area 1 for tight blanket attachment described in 3.

Notes:

- understory is Himalayan blackberry, English ivy and wild clematis. Eradicate all to bare soil.
- cover exposed topsoil with erosion prevention fabric tightly fastened to existing contours [no airspaces]
- plant new, native replacement stock through fabric
- manual irrigation only; see maintenance appx. II

Replacement/restoration plants by area:

- A - four native rhodo, four vine maple
- B - four Indian plum, four hazelnut
- C - six native rhodo, four vine maple
- D - two Shorepines, four Indian plum
- E - four vine maple, two native rhodo, two Indian
- F - four hazelnut, four Indian plum

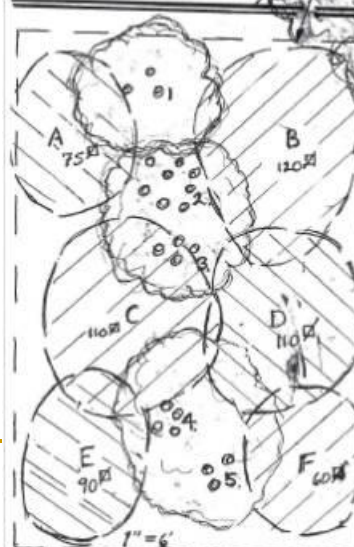
FOLIAGE
PLANTERS
[APPROX]

RESTORATION
AREA PROPER

WORK ENVELOPE

NEW
GROUND COVER:
12 1 GAL FERNS
12 1 GAL SALAL
IN EACH
AREA

TOTAL PLANTING
AREA IS
565'



David M. Reich, consulting arborist



