



As part of the Bell Street Park project Seattle Parks is proposing the removal of trees and planting of trees along Bell Street. The project involves the removal of the existing trees on Bell Street, an issue the City does not take lightly. Parks did an extensive review of the existing trees within the four blocks of the proposed Bell Street Park and determined the following:

1. All of the existing 46 tree pits are undersized, which has retarded some of the trees' growth (flowering pear, *Pyrus calleryana*) east of 3rd and there is no practical way to increase the size of these existing tree pits given the conflicts with the existing underground infrastructure.
2. All of the existing tree pits contained poor soils and in some cases lacked proper drainage. As with the above condition there is no practical way to correct this issue.
3. The hedge maples (*Acer campestre*) in the block from 1st to 2nd Ave., and to a much lesser extent from 2nd to 3rd Ave., have root structures that have heaved the sidewalk (please look at the trees in front of the Copper Gate) or are planted in such a manner as to make it difficult (expensive) to create the curbless/woonerf park, which is one the key elements in bases of design for this project.

Additionally, these trees have globe shaped canopies with dense branch structures and leaves, which are hard to make work with street and proper pedestrian lighting.

4. All of the existing trees on the north side of the Bell Street Park are located too close to the existing building and key underground infrastructure which, again, compromised the proposed curb less/woonerf design.
5. All of the existing trees have approximately 1/2 of their expected life left, which would mean that in 15 to 18 years the City would have to remove and replace these trees at a considerably greater expense than if the proposed removal takes place as an element of the park construction project.

Parks will plant a total of 105 new trees as part of the fully funded 2008 Parks and Green Spaces Levy project. Large "civic" trees are proposed for the south side of the corridor with grove type trees on the north side. As the public notice stated, Parks is proposing to remove these trees as part of the permitting process and can only move forward with the removal when the permit is issued for construction. The proposed design calls for replacing the existing 46 trees with the following species:

1. Dura Heat River Birch - Growth Rate: Fast growing to 40' (North Side of the Bell)
2. Tulip Tree - Growth Rate: Fast growing to 50' (South Side of the Bell)
3. Yarwood London Plane - Growth Rate: Fast to 60' (South Side of the Bell)
4. Quaking Aspen - Growth Rate: Rapid to 40' (North Side of the Bell)

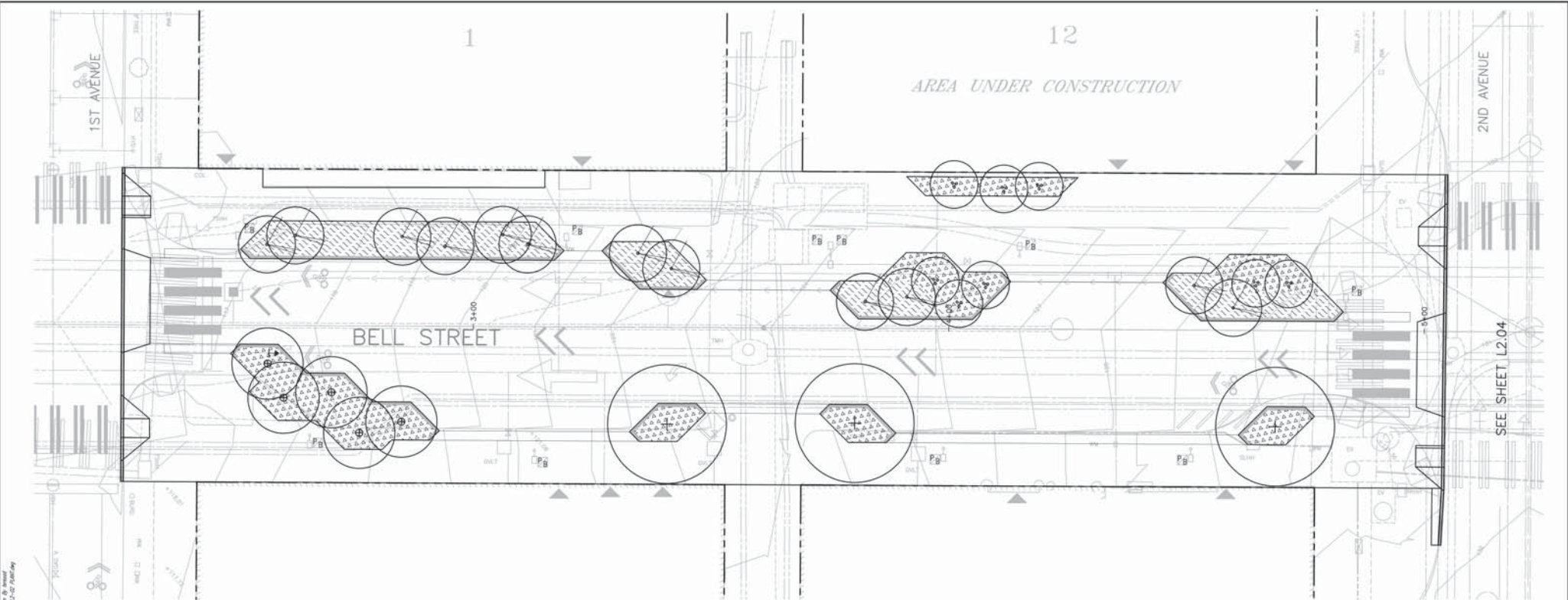
An element of the tree replacement plan is Parks staff and the project design team will be developing a long-term tree management plan covering maintenance, pruning and replacement of the trees over the next 30 years for the Bell Street corridor.

A comment period was open for this project from April 27, 2011 to May 11, 2011. Thank you to all of those who commented.

**The following five pages contain the Planting Plan drawings.**







Revised: 04/08/2011 - 07:00pm by [Name]  
 File: C:\[Path]\[Project]\[Drawing].dwg

DATE	MAJOR REVISIONS

SVR Approval Review Group	Name	Date
King County Water		
King County Traffic		
Public Works		
Planning Management		
Pub & Eng		
Historic Structures		
Soil Engineering (SW)		
Soil Survey		
Signal Operations		
Signal Operations Inspection		
SPU Project Manager		
SPU Plant Custody Services		
SPU Street Design		
SPU Water		
Street Lighting and Signal Design		
Traffic Operations		
Urban Forestry		

STATE OF WASHINGTON  
REGISTERED  
LANDSCAPE ARCHITECT

MICHAEL S. CORBETT  
CERTIFICATE NO. 821

STATE OF WASHINGTON  
REGISTERED  
LANDSCAPE ARCHITECT

MARGARET ROSE STARNELL  
CERTIFICATE NO. 456  
QA/QC REVIEWER

### LEGEND

PLANT MIX 1  
SEE PLANT SCHEDULE SHEET L2.00

PLANT MIX 2  
SEE PLANT SCHEDULE SHEET L2.00

EXISTING TREE  
SAVE AND PROTECT

TREE PROTECTION FENCE  
SEE CIVIL PLANS

- ### NOTES
- SEE SHEET L2.00 FOR PLANT SCHEDULE.
  - SEE SHEET L2.10 FOR PLANTING DETAILS.
  - SEE SHEETS L4.00 TO L4.11 FOR IRRIGATION PLANS AND DETAILS.
  - SEE SHEETS LT1.00 TO LT.09 FOR LIGHTING PLANS.
  - SEE CIVIL PLANS FOR PAVING, STRIPING, GRADING, UTILITIES, AND DRAINAGE.
  - SEE SPECIFICATIONS FOR SOIL PREPARATION AND MULCH.

SCALE IN FEET  
10 5 0 10 20

BELL STREET PARK KEY PLAN

**60% COMPLETE STREET IMPROVEMENT PLAN/50% CONSTRUCTION DOCUMENTS**  
NOT FOR CONSTRUCTION

**SVR DESIGN COMPANY**  
1925 SECOND AVE. SUITE 200  
SEATTLE, WA 98101  
P 206.223.0020  
F 206.223.0025  
www.svrdesign.com

**PLEASE CALL  
3 Working Days  
BEFORE YOU DIG  
1-800-424-5555**

REVIEWED BY SPU/WATER ENGINEERING	20.....
REVIEWED BY SPU/DRAINAGE	20.....
APPROVED BY SDOT STREET IMPROVEMENT PERMITTING	20.....

NAME OR INITIALS AND DATE	INITIALS AND DATE
DESIGNED: NC/TD 4/8/2011	REVIEWED:
CHECKED: MRS 4/8/2011	PROJECT MANAGER:
DRAWN: TD 4/8/2011	DESIGN REVIEW: MRS 4/8/2011
CHECKED: NC 4/8/2011	REVISED AS-BUILT:

City of Seattle  
**Seattle Department of Transportation**

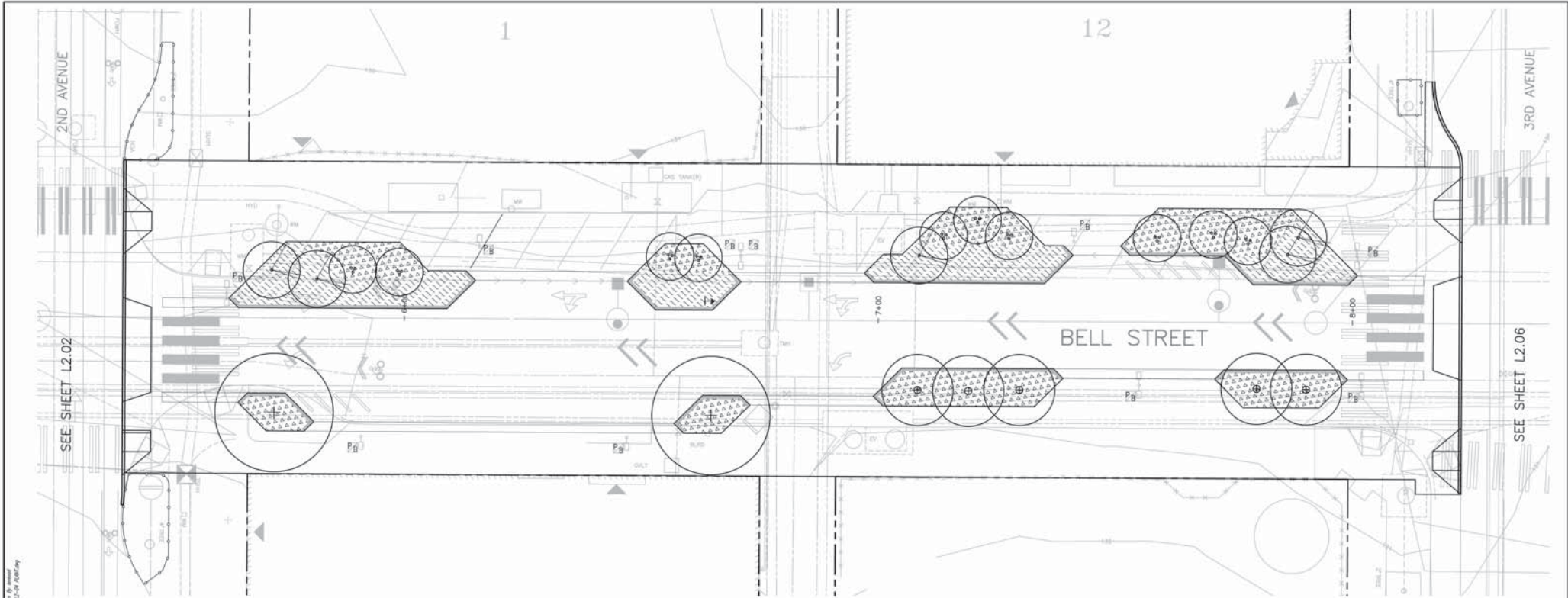
SCALE: H. V. INSPECTOR'S BOOK

**BELL STREET PARK  
PLANTING PLAN  
1ST AVENUE TO 2ND AVENUE**

SDOT PROJECT NO. 1311891
Vault PLAN NO.
Vault SERIAL NO.
SHEET L2.02 OF ##

APRIL 8, 2011

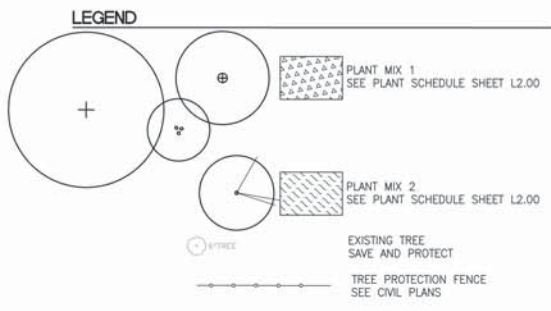




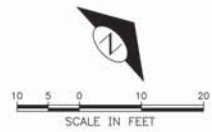
Revised 04/08/2011 - 2:00 PM by [Name]  
 File: C:\[Path]\[Project]\[Drawing].dwg

DATE	MAJOR REVISIONS

SEE SIP Approved Review Group	Name	Date
King County Water		
King County Traffic		
Public Works		
Payment Management		
Pub & Eng		
Historical Structures		
Soil Engineering (SWE)		
Soil Survey		
Signal Operations		
Signal Operations Inspection		
SIP Project Manager		
SIP Final Estimate Services		
SIP Cost Estimation		
SIP Water		
Street Lighting and Signal Design		
Traffic Operations		
Urban Forestry		



- NOTES**
- SEE SHEET L2.00 FOR PLANT SCHEDULE.
  - SEE SHEET L2.10 FOR PLANTING DETAILS.
  - SEE SHEETS L4.00 TO L4.11 FOR IRRIGATION PLANS AND DETAILS.
  - SEE SHEETS LT.10 TO LT.09 FOR LIGHTING PLANS.
  - SEE CIVIL PLANS FOR PAVING, STRIPING, GRADING, UTILITIES, AND DRAINAGE.
  - SEE SPECIFICATIONS FOR SOIL PREPARATION AND MULCH.



**60% COMPLETE STREET IMPROVEMENT PLAN/50% CONSTRUCTION DOCUMENTS**  
 NOT FOR CONSTRUCTION



**PLEASE CALL**  
**3 Working Days**  
**BEFORE YOU DIG**  
**1-800-424-5555**

REVIEWED BY SPU/WATER ENGINEERING	20
REVIEWED BY SPU/DRAINAGE	20
APPROVED BY SDOT STREET IMPROVEMENT PERMITTING	20

NAME OR INITIALS AND DATE	INITIALS AND DATE
DESIGNED: NC/TD 4/8/2011	REVIEWED:
CHECKED: MRS 4/8/2011	PROJECT MANAGER:
DRAWN: TD 4/8/2011	DESIGN REVIEW MRS 4/8/2011
CHECKED: NC 4/8/2011	REVISED AS-BUILT:



SCALE: H. V. INSPECTOR'S BOOK

**BELL STREET PARK**  
 PLANTING PLAN  
 2ND AVENUE TO 3RD AVENUE

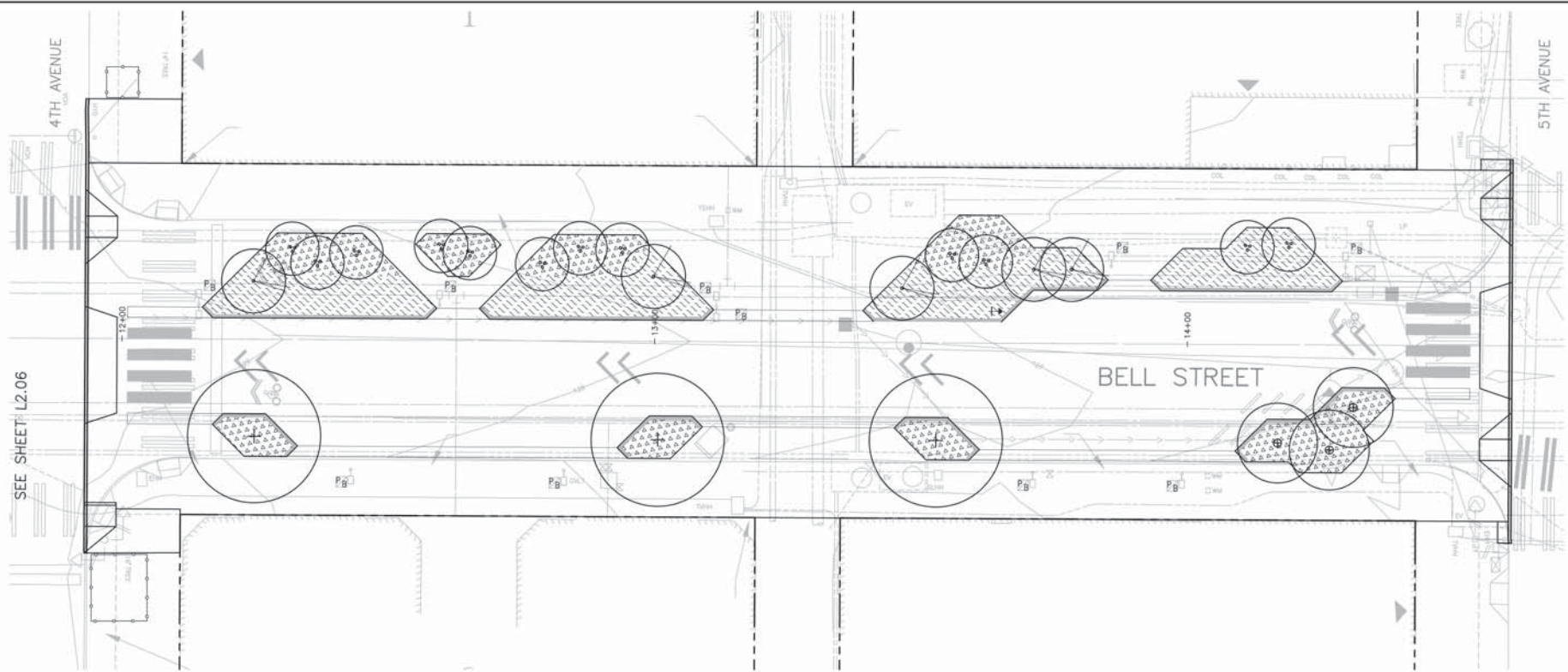
SDOT PROJECT NO.	131891
Vault Plan No.	
Vault Serial No.	
SHEET L2.04 OF ##	

APRIL 8, 2011





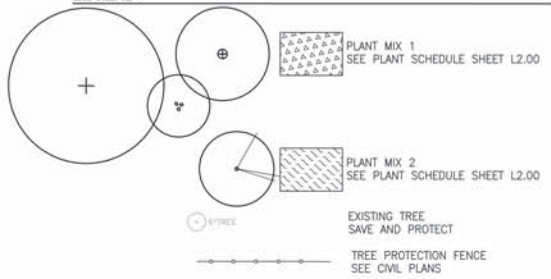
Revised: 04/08/2011 - 10:00AM by [Name]



SEE SHEET L2.06

BELL STREET

**LEGEND**

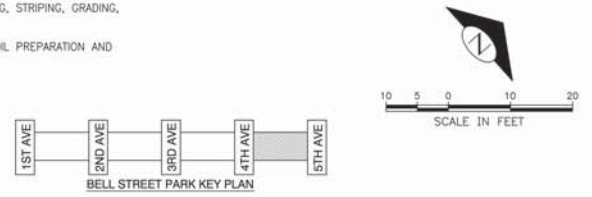


**NOTES**

- SEE SHEET L2.00 FOR PLANT SCHEDULE.
- SEE SHEET L2.10 FOR PLANTING DETAILS.
- SEE SHEETS L4.00 TO L4.11 FOR IRRIGATION PLANS AND DETAILS.
- SEE SHEETS LT.00 TO LT.09 FOR LIGHTING PLANS.
- SEE CIVIL PLANS FOR PAVING, STRIPING, GRADING, UTILITIES, AND DRAINAGE.
- SEE SPECIFICATIONS FOR SOIL PREPARATION AND MULCH.

**STATE OF WASHINGTON**  
LANDSCAPE ARCHITECT  
MICHAEL S. CORBETT  
CERTIFICATE NO. 821

**STATE OF WASHINGTON**  
REGISTERED LANDSCAPE ARCHITECT  
MARGARET ROSE STAHEL  
CERTIFICATE NO. 456  
QA/QC REVIEWER



**60% COMPLETE STREET IMPROVEMENT PLAN/50% CONSTRUCTION DOCUMENTS**  
NOT FOR CONSTRUCTION

**SVR DESIGN COMPANY**  
1925 SECOND AVE. SUITE 200  
SEATTLE, WA 98101  
P 206.223.8320  
F 206.223.8325  
www.svrdesign.com

**PLEASE CALL**  
**3 Working Days**  
**BEFORE YOU DIG**  
**1-800-424-5555**

REVIEWED BY SPU/WATER ENGINEERING	20.....
REVIEWED BY SPU/DRAINAGE	20.....
APPROVED BY SDOT STREET IMPROVEMENT PERMITTING	20.....

NAME OR INITIALS AND DATE	INITIALS AND DATE
DESIGNED: NC/TD 4/8/2011	REVIEWED:
CHECKED: MRS 4/8/2011	PROJECT MANAGER:
DRAWN: TD 4/8/2011	DESIGN REVIEW: MRS 4/8/2011
CHECKED: NC 4/8/2011	REVISED AS-BUILT:

City of Seattle  
**Seattle Department of Transportation**

SCALE: H. V. INSPECTOR'S BOOK

**BELL STREET PARK**  
PLANTING PLAN  
4TH AVENUE TO 5TH AVENUE

SDOT PROJECT NO.	131891
Vault Plan No.	
Vault Serial No.	
SHEET L2.06 OF ##	

APRIL 8, 2011

All work done in accordance with the City of Seattle Standard Plans and Specifications in effect on the date shown above, and supplemented by Special Provisions.