



One Center City



- Seattle Transit Advisory Board
- July 27, 2016



Overview

- What and Why
- Outreach and engagement
- Schedule



Twenty-year Transportation and Public Realm Vision

- Partnership:
 - City of Seattle
 - King County Metro
 - Sound Transit
 - Downtown Seattle Association
- Unified and integrated plan for how we:
 - Move through,
 - Connect to, and
 - Experience Center City



Center City growth

Seattle 2035 Growth Targets

Center City	Jobs	Housing Units
2015 Existing*	240,000	47,000
Growth	55,000	28,000
2035 Totals	295,000	75,000
% Change	+23%	+60%

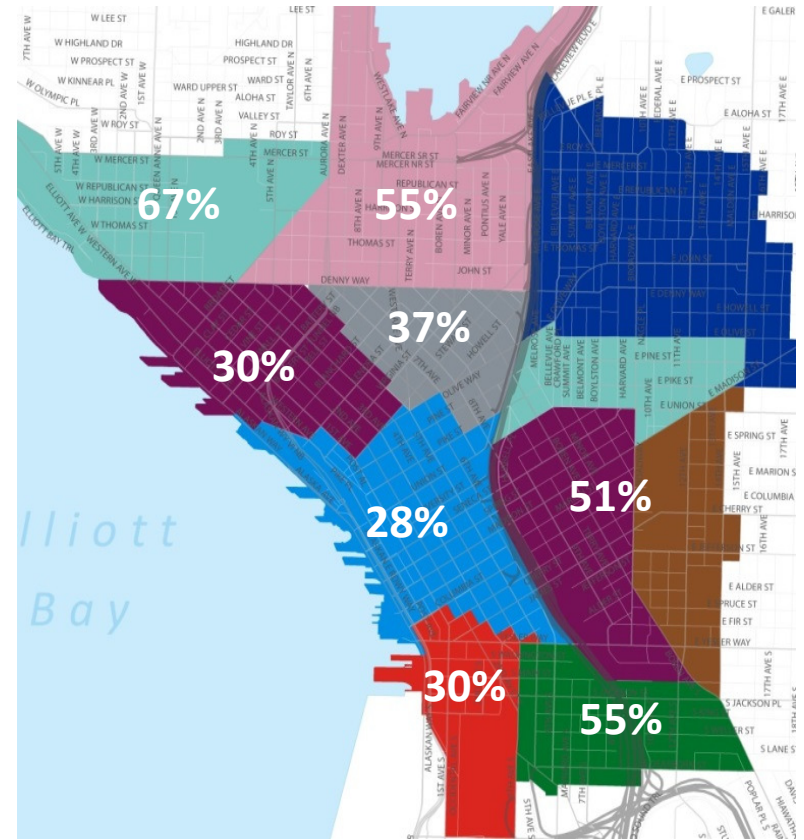
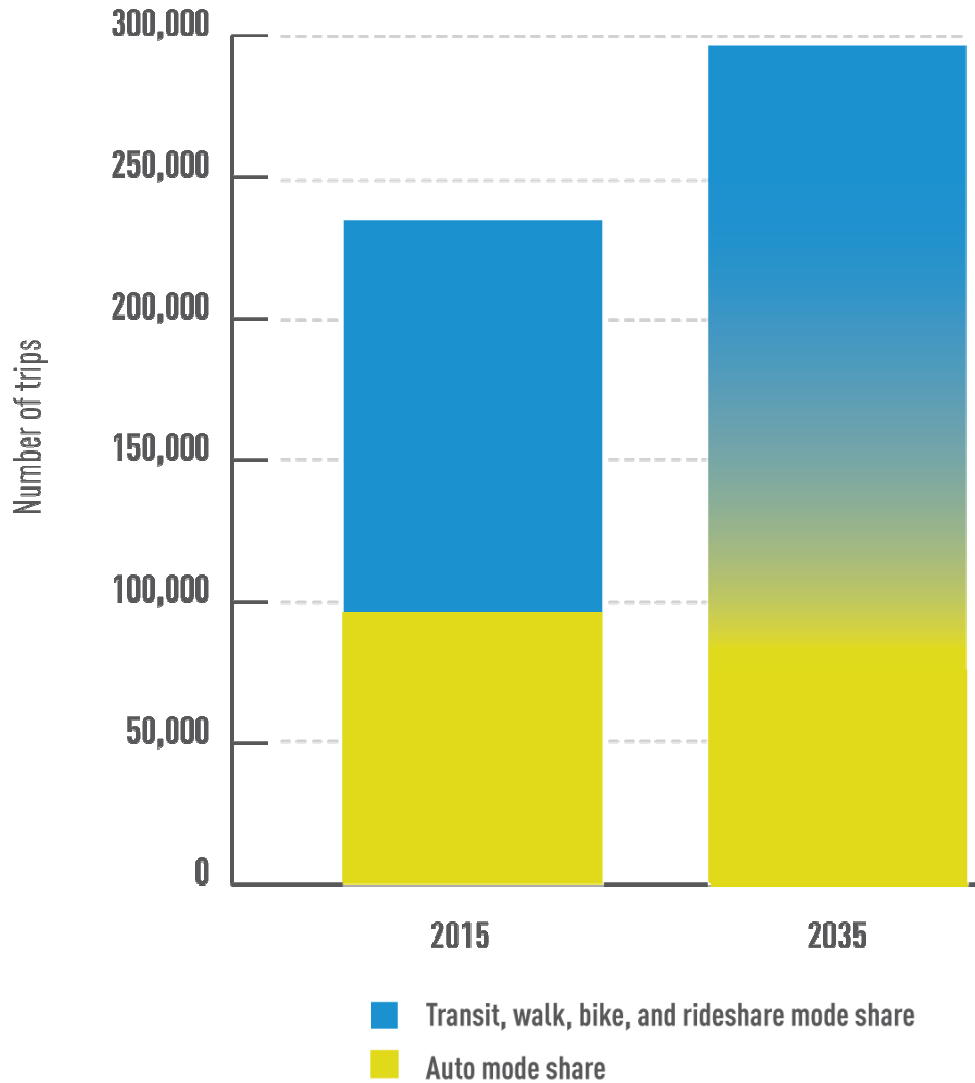
* 2014 household data

Evolving Center City

- Transportation system changes:
 - Light rail
 - End of bus operations in DSTT
 - SR 99 tunnel and tolling
 - Metro long-range plan
 - Center City Bike Network
 - STBD and Move Seattle investments
 - Shared mobility
 - Autonomous vehicles
- Unprecedented investment and development:
 - 50+ active downtown development sites
 - Convention Center expansion
 - Major employer headquarters

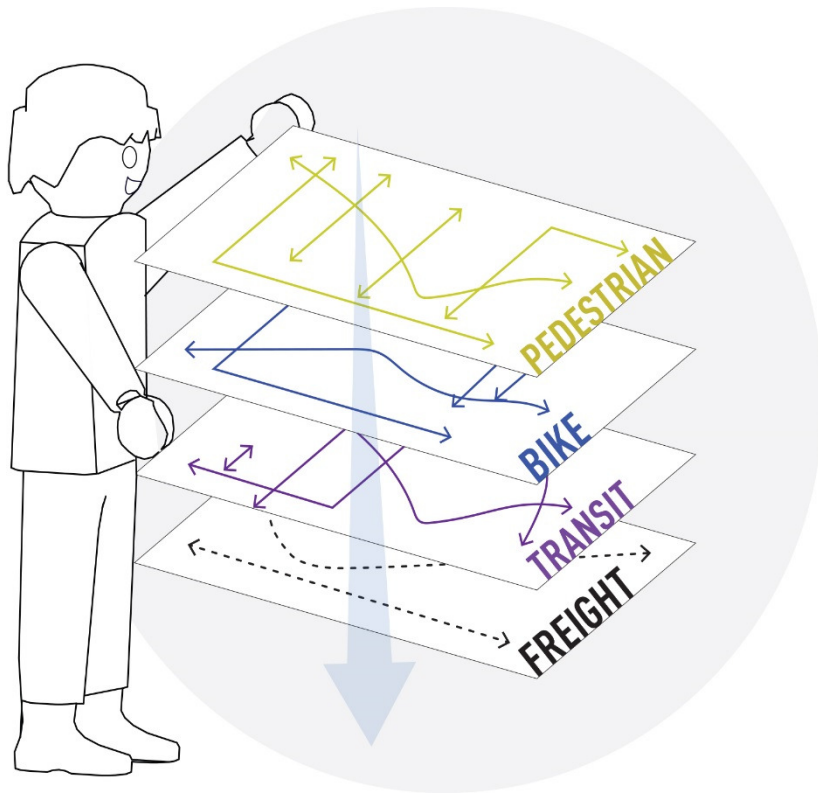


The challenge



Share of commute trips by auto in 2015

Integrated plan



- 20-year vision
- Projects, programs and policies
- Performance measures (e.g., mode share and travel time)
- Public realm plan
- Mobility strategies across modes
- Project List
- Funding and phasing strategy (now through 2035)

Seattle Transit Master Plan
Metro Connects Long-Range Plan
Sound Transit Regional Long-Range Plan/ST 3
Vision Zero



Seattle 2035 Comprehensive Plan
Central Waterfront Project
Neighborhood and Hub Plans



PLAN ELEMENTS AND GUIDING PLANS

Move Seattle
Pedestrian Master Plan
Vision Zero



Move Seattle
Bicycle Master Plan
Center City Bicycle Network
Vision Zero



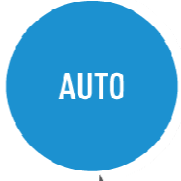
Right-of-Way Improvements Manual
Pike Pine Renaissance
Vision Zero



Freight Master Plan
Central Business District
Curb Space Study
Move Seattle
Vision Zero

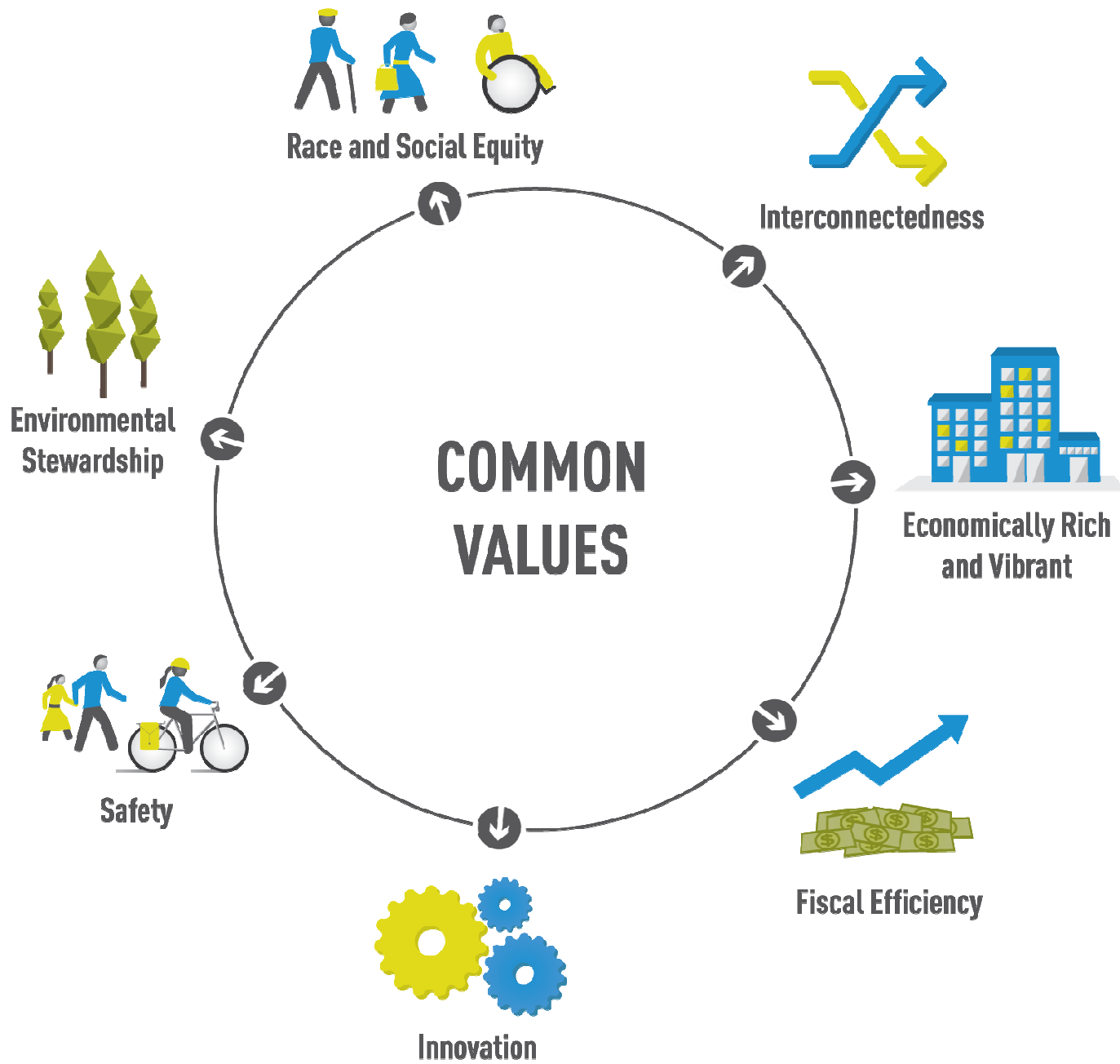


Move Seattle
Freight Master Plan
Central Business District
Curb Space Study
Shared Mobility Study
Vision Zero



DSA Strategic Plan
Commute Seattle Mission
and Mode Split Study
Vision Zero





Guiding Principles [draft]



Anticipate and be flexible to account for future changes



Provide and enhance mobility



Support economic vitality



Optimize use of limited street space



Provide safe and reliable transportation options



Enhance the public realm

Public engagement: desired outcomes

- Stakeholders are well-informed
- Engage new voices in the discussion
- Input is representative of diverse perspectives
- Process and use of input is transparent
- Results in lasting decisions and equitable outcomes



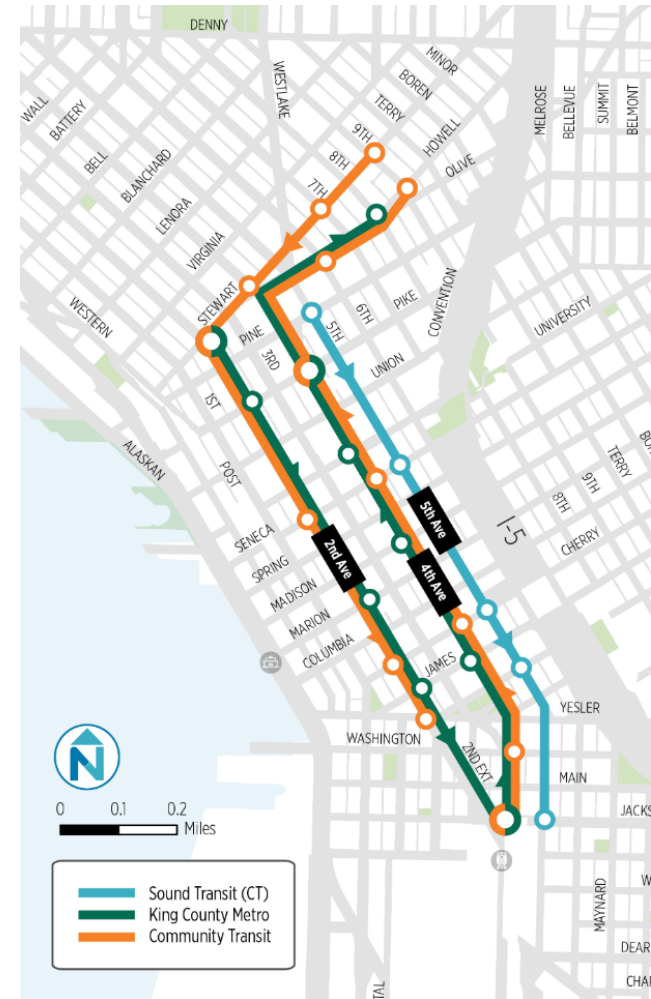
Outreach and Engagement

- Stakeholder interviews
- Project advisory committee
- Engaging toolkit
- Launch with a big question
- Briefings and presentations
- On-going interactive activities to shape recommendations



Near-term activities

- End of bus operations in DSTT
 - 80 buses in pm peak hour
 - Approximately 11,000 riders
- Northgate light rail
- Major projects
 - SR 99 Tunnel
 - Central Waterfront
 - City Center Connector
- Convention Center expansion
- Private development



Potential Near-term Strategies

- Bus service
- Surface street capacity
- Pedestrian improvements
- Center City Bike Network projects
- Vision Zero spot improvements



Schedule

- Kick off Advisory Committee – August/Sept
- Vision, Goals, Values – Fall
- Near-term strategies – Fall/Winter
- Potential futures → Final Plan - 2017

Questions?

Project Manager

Eric.Tweit@seattle.gov | (206) 684-8834

www.seattle.gov/transportation

