



North Downtown Mobility Action Plan



PROJECT BELLTOWN
Many Voices. One Community.



Jonathan Lewis
Transit Advisory Board
December 20, 2017



Seattle
Department of
Transportation

Overview

- Project context
- Key tasks
- Guiding principles
- Mobility needs
- What we've heard
- Next steps



Goals

- Support access to and mobility through North Downtown
 - Uptown, Belltown, and South Lake Union
- Identify and prioritize transportation improvements for all modes
- Build on existing community plans



Project Need

- Projected 23% growth in jobs and 60% growth in households by 2035 in Seattle's Center City
- \$4B in permitting activity citywide in 2015
- Transportation investments
- Arena renovation

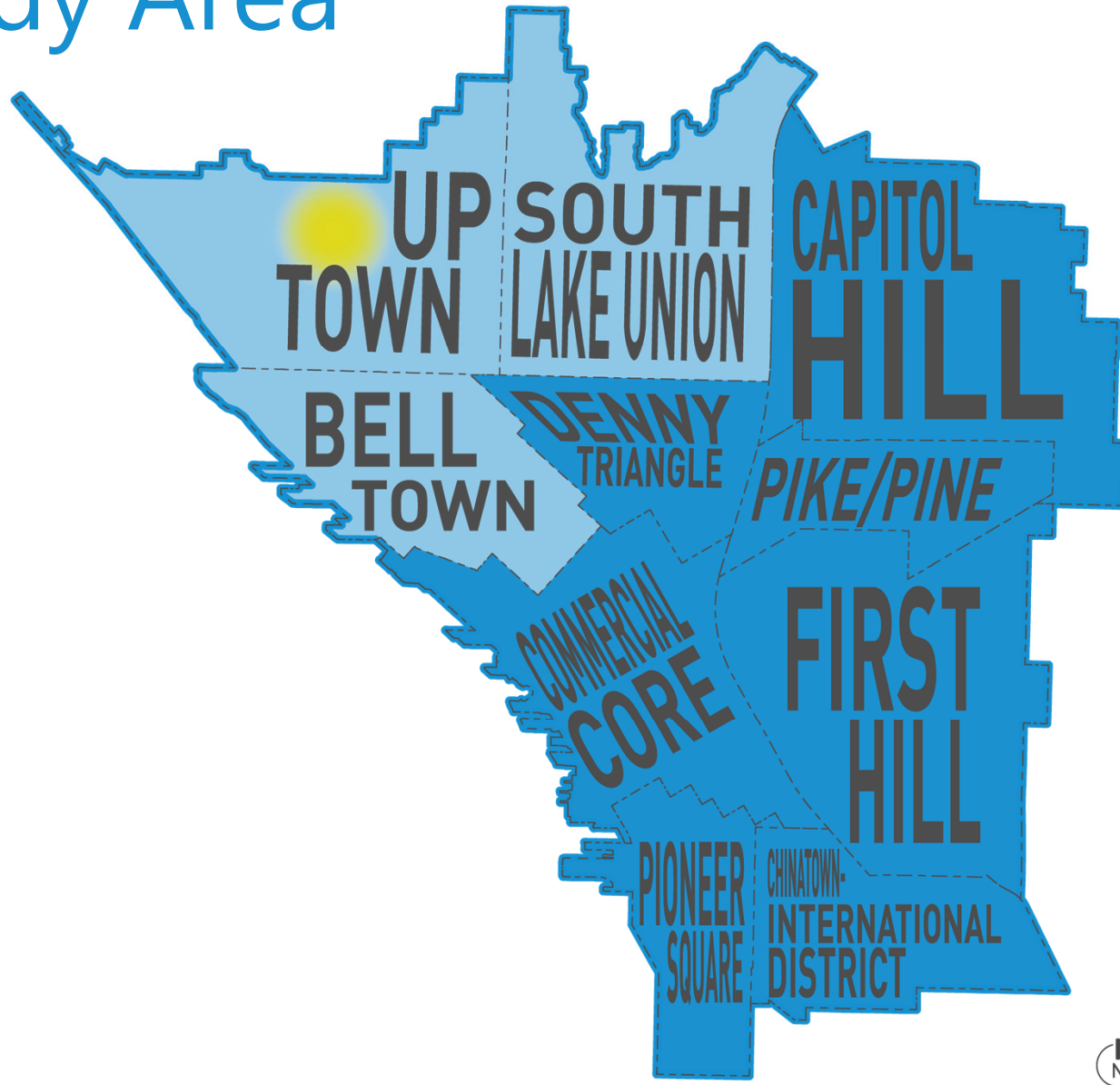


Context

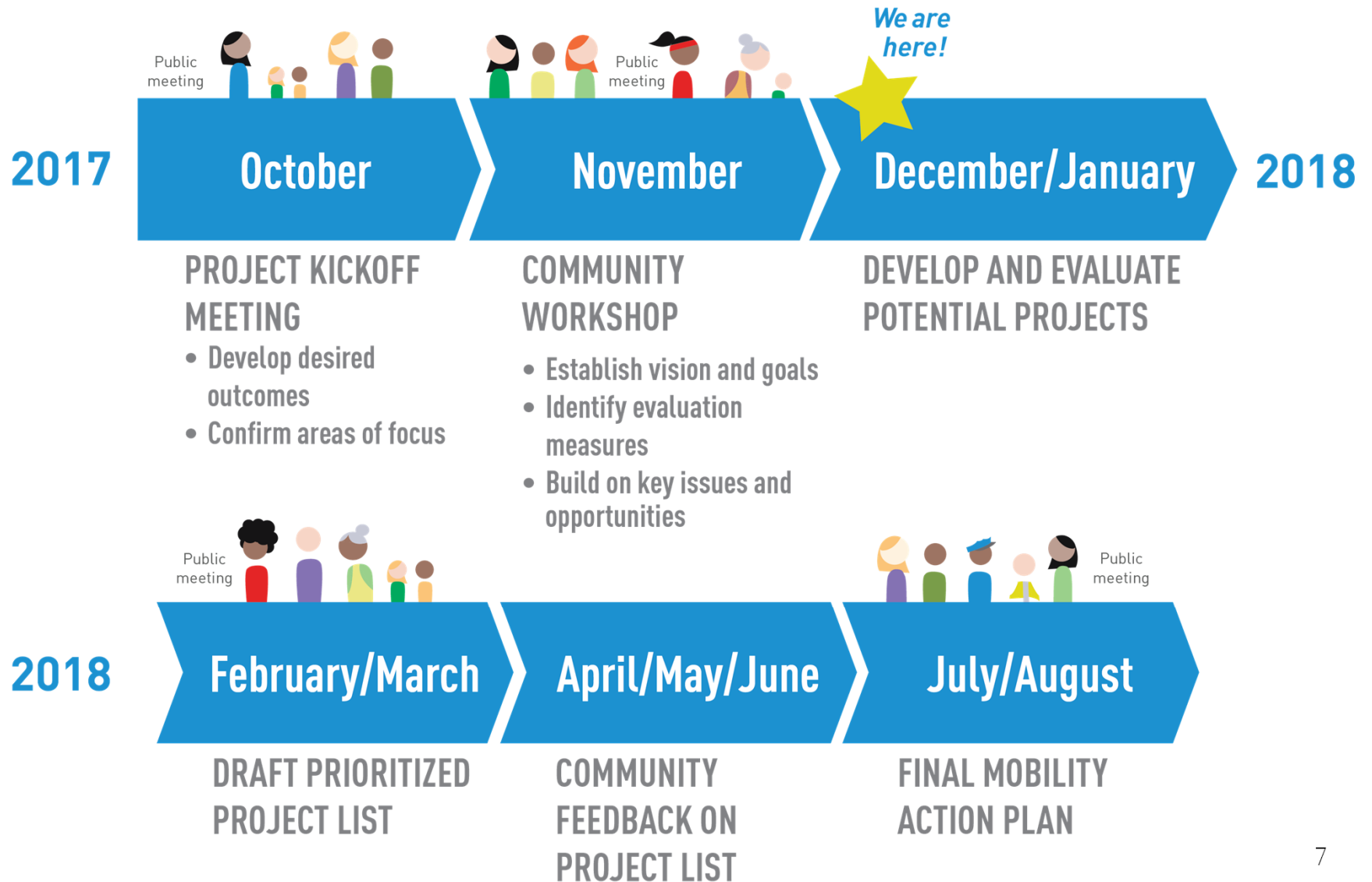
- One Center City
 - Near-term plan and 20-year vision for how we move through, connect to, and experience Seattle's Center City
- Arena EIS
 - Evaluates probable adverse environmental impacts from the renovation of the Seattle Center Arena and recommends ways to mitigate these impacts



Study Area

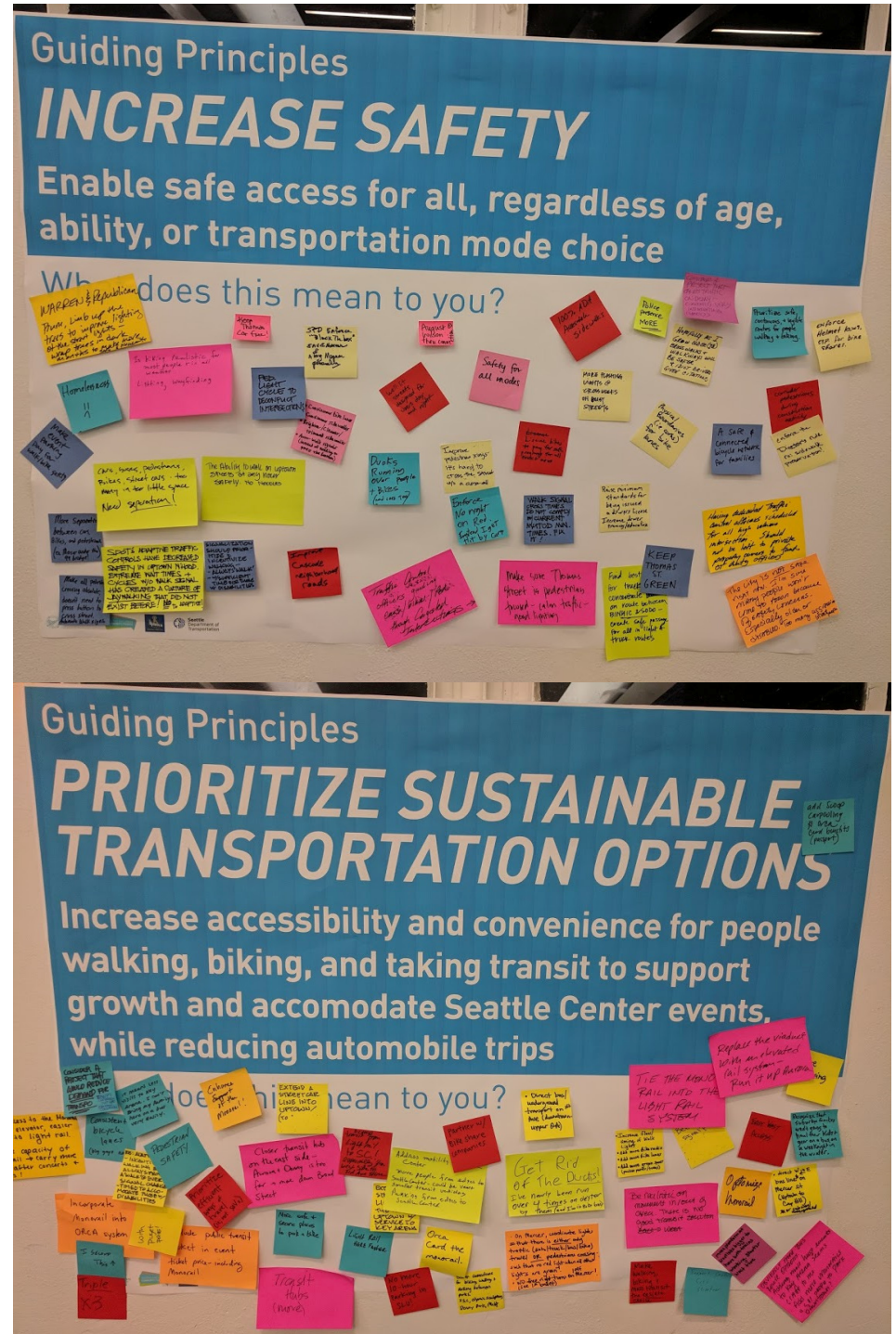


Schedule



Guiding Principles

- Build on community vision
- Increase safety
- Prioritize sustainable transportation options
- Improve connectivity
- Enhance the public realm



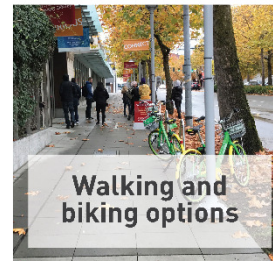
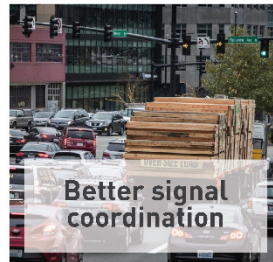
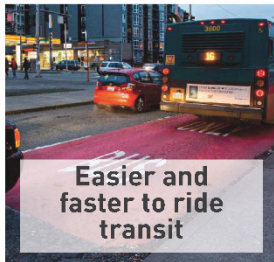
Build an evaluation framework

PRIORITIZE SUSTAINABLE TRANSPORTATION OPTIONS

Increase accessibility and convenience for people walking, biking, and taking transit to support growth and accommodate Seattle Center events







What does this mean to you?

Here's what we heard from you in October:



How can we measure it?

Put a dot next to the 2 measures you think are most important (or add your own with a sticky note):

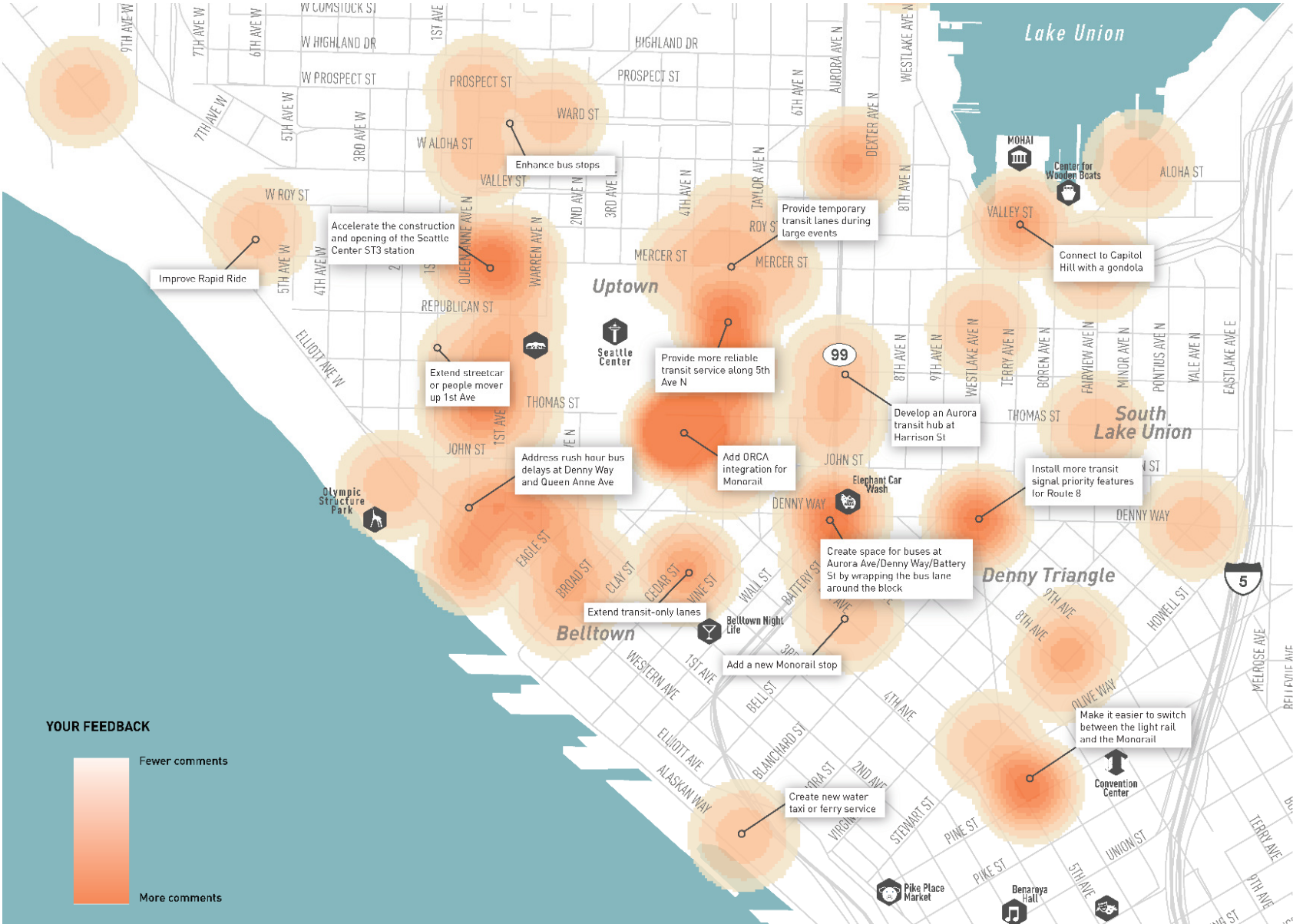
-  Improves accessibility and convenience for people walking, biking, and taking transit
-  Enhances east-west travel
-  Prioritizes pedestrian crossings in high pedestrian volume areas
-  Makes transit faster and more reliable
-  Reduces single-occupancy vehicle trips
-  Your idea here:

Mobility Needs

- Support new east-west connections
- Address freight needs
- Improve pedestrian access across busy streets
- Add all ages bicycling connections
- Activate the public realm with green streets



Identifying Gaps



Identifying Gaps



What we've heard

- Bus connections
 - Transit only 3rd Ave to Denny
 - Explore bus queue jump opportunities
 - Mercer/Dexter, Mercer/Westlake
 - E/W through SLU/Uptown
 - Connect to Expedia campus
- Queen Anne Ave and 1st Ave N
 - Add bus only lanes
 - Look at opportunity to decouple
- Look at temporary opportunities to improve transit during events
- Extend streetcar
 - Existing to UW
 - Along 1st Ave to Seattle Center
- Light Rail
 - Speed up ST3 construction
 - New station location input
 - Harrison and Aurora?
 - Fairview and Denny?
- Monorail improvements
 - Orca integration
 - Add a Belltown stop
 - Improve capacity and connections at Westlake
- Explore Sounder connection in North Downtown
- Water taxi or ferry service to Pier 66 or Pier 69

What are your priorities?



Next Steps

Date	Activity/action
Dec/Jan	Finalize Evaluation Framework & Further Develop Analysis/Projects
Feb/March	Draft Project List*
April to June	Community Feedback & Refinement
July/August	Final Mobility Action Plan*

*Public meeting

Questions?

northdowntown@seattle.gov | (206) 684-7576

<http://www.seattle.gov/transportation/NODOMAP>



Seattle
Department of
Transportation