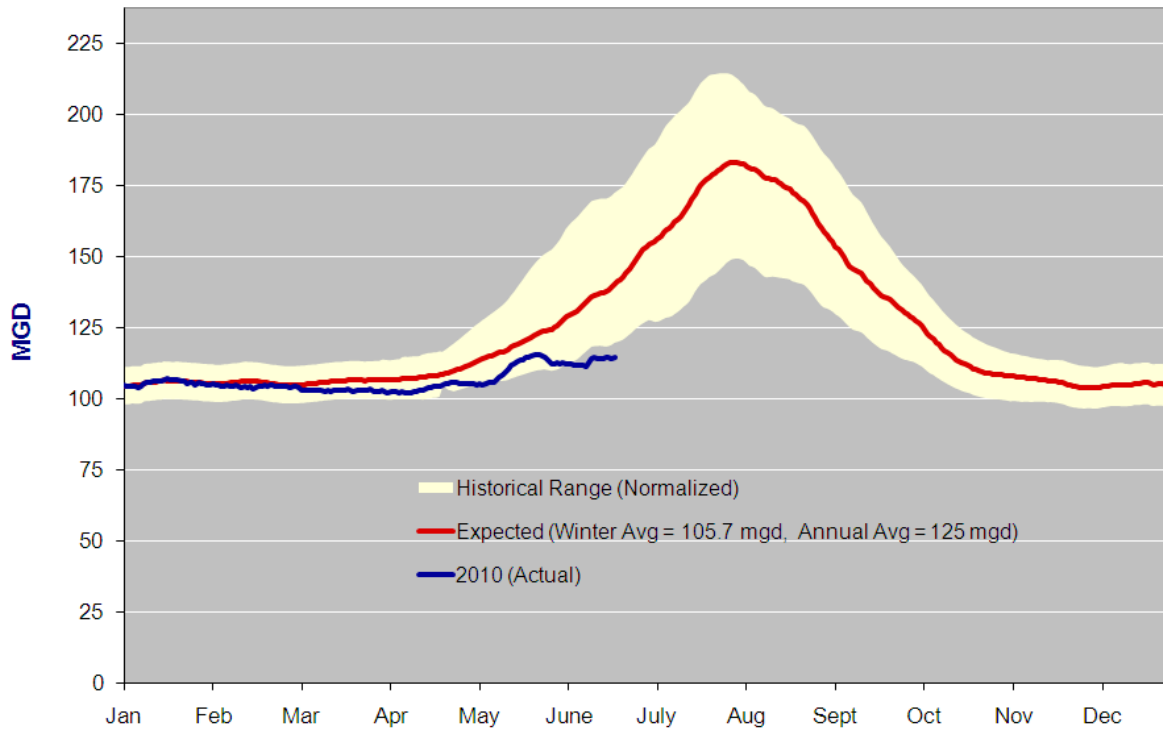


Expected and Actual Daily Water Consumption vs. Summer Weather

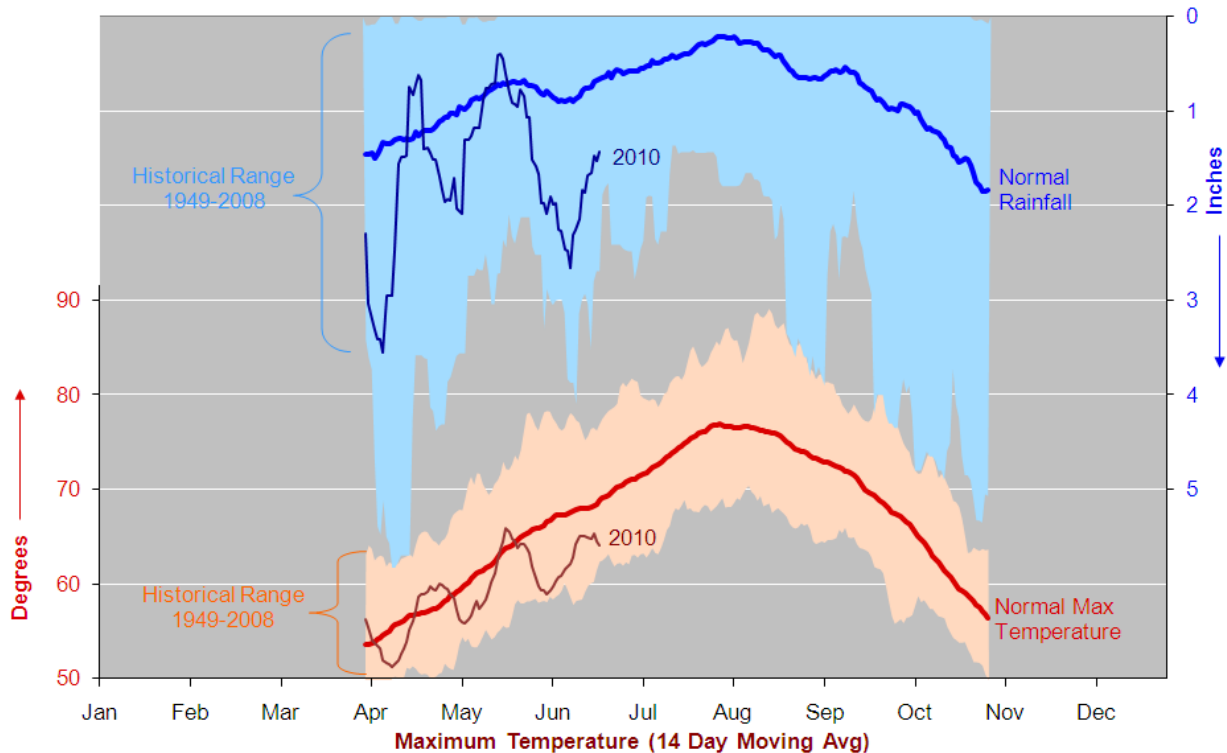
(Week Ending June 20, 2010)

Daily Consumption: **Expected (Given Normal Summer Weather)** and **2010 Actual**
(14 Day Moving Average)



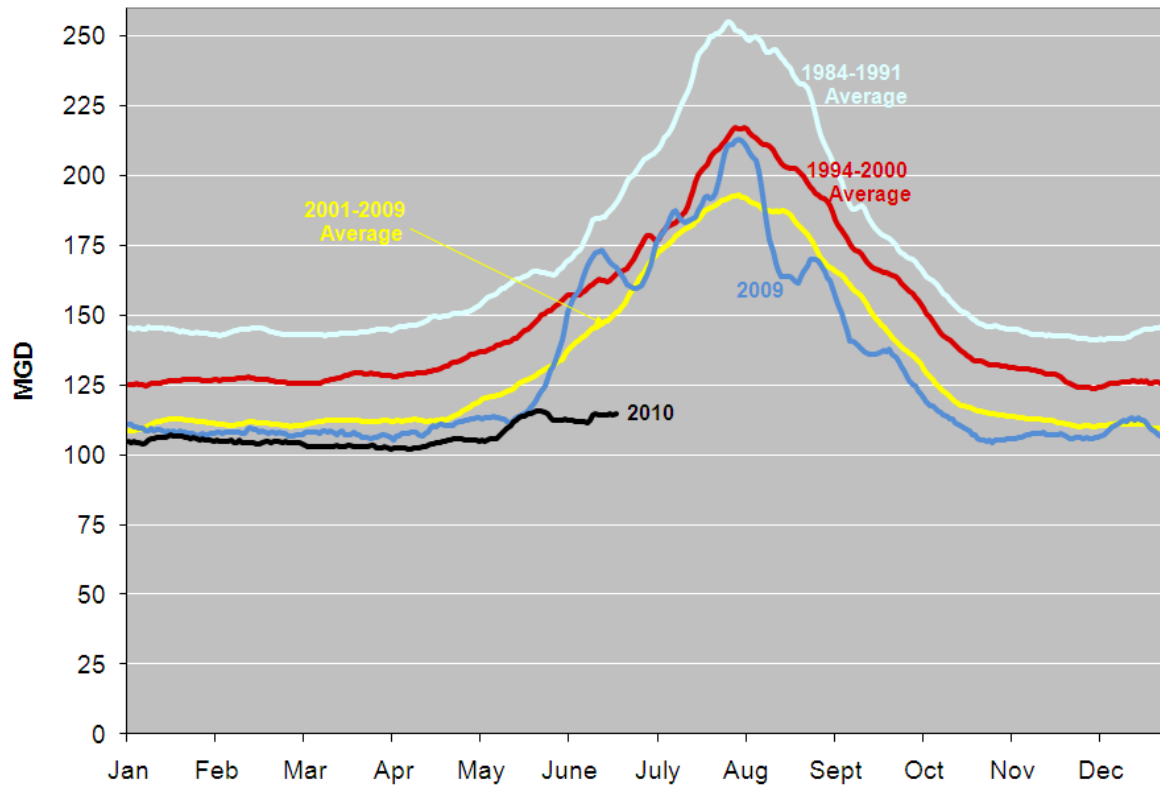
Summer Weather 2010

Inches of Rain (14 Day Moving Sum)



DAILY WATER CONSUMPTION

14 Day Moving Averages in Million Gallons per Day (MGD)



Daily Consumption for the Past Week in MG

Jun 14	118.2
Jun 15	113.0
Jun 16	111.9
Jun 17	115.1
Jun 18	115.6
Jun 19	112.5
Jun 20	105.1
Average	113.1