

Director's Report

Sam Assefa

June 25, 2020

COVID-19 Public Health Emergency

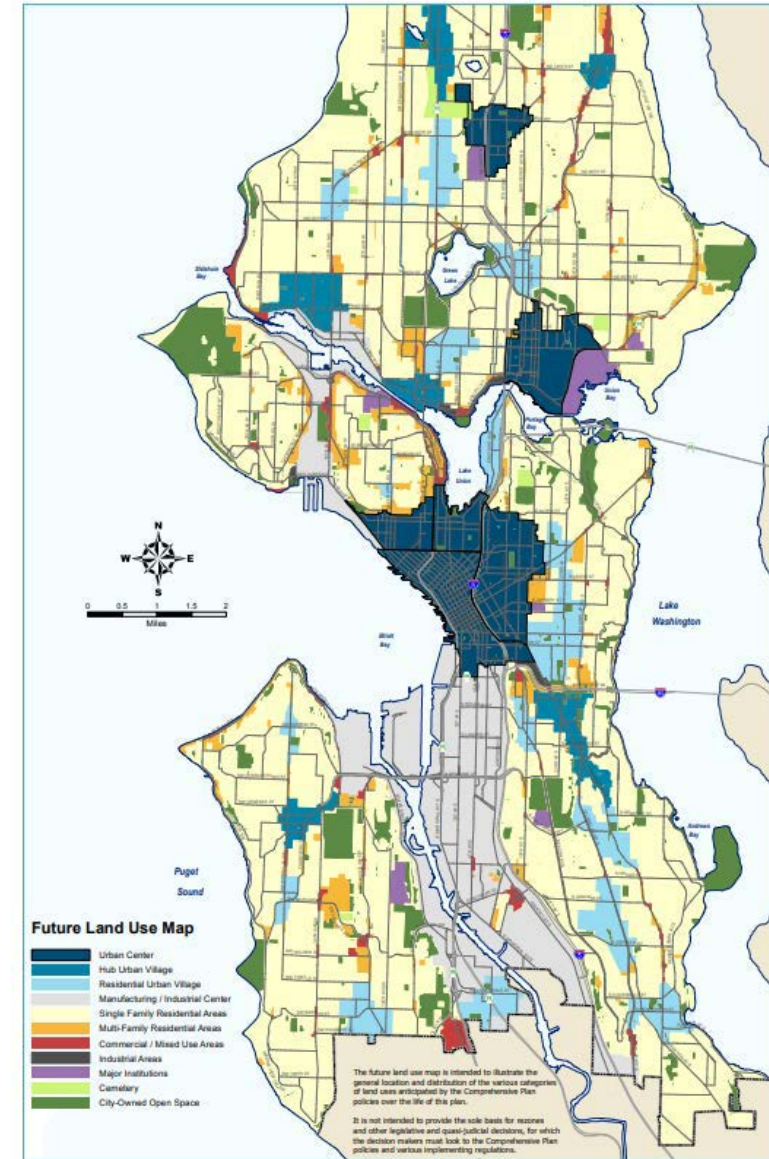
OPCD staff contributing to City disaster response efforts:

- Small Business Assistance applications
- Support for restaurants struggling to attract customers during Phase 1 / 2
- Outside Citywide analysis for Healthy Streets initiative
- GIS support for citywide response efforts
- Communications support for DON, SPU, SDOT, etc
 - #SeattleTogether, 2020 Census, sanitation stations, transportation planning
- Office of Emergency Management disaster management

2020 WORKPLAN

Seattle Comprehensive Plan

- Early project planning underway for the next major update
 - Identifying staffing and budget
 - Developing framework for racial equity analysis
 - Exploring community engagement strategies
 - Evaluating potential approaches to environmental analysis
- Exploring options to reduce consultant costs
- Comp Plan update due in 2023



2020 WORKPLAN

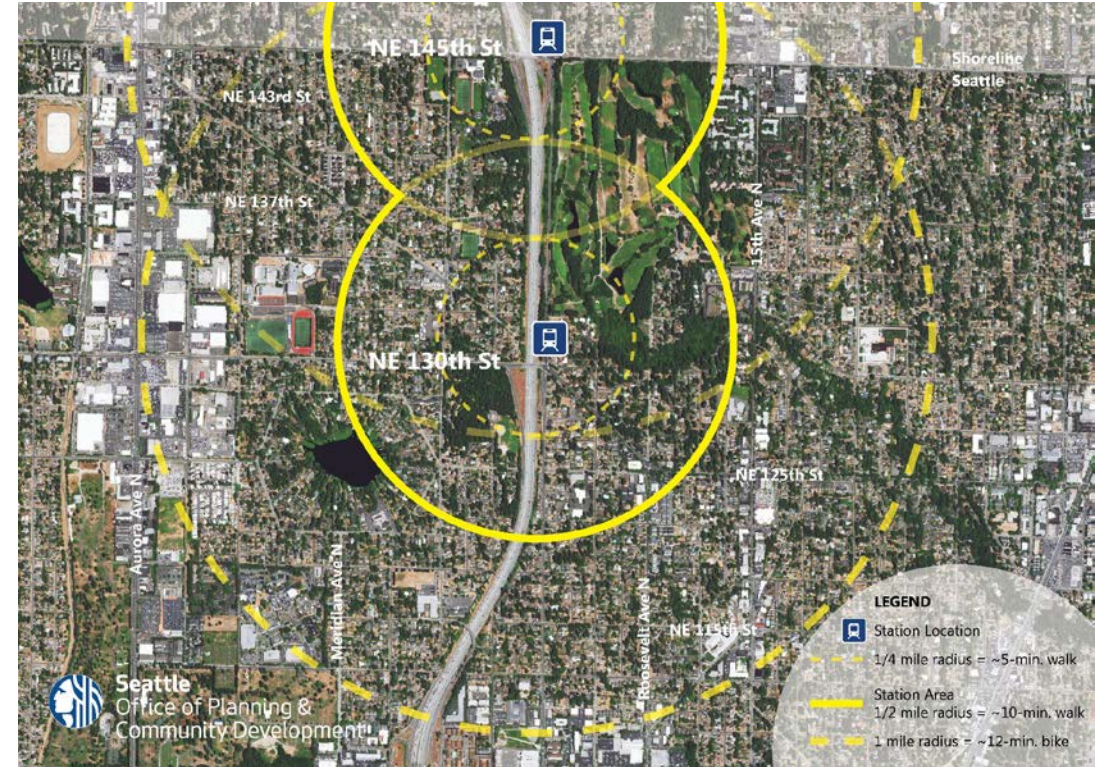
Station Area Planning

- 14 new stations, 2 crossings, new tunnel
- OPCD/Sound Transit collaboration on Racial Equity Analysis, community engagement
- Public realm planning at Jackson and West Lake hubs
- Design standards for new stations
- Opportunities for equitable transit-oriented development
- Community planning for housing and City investments near future stations



130th / 145th Station Area Planning

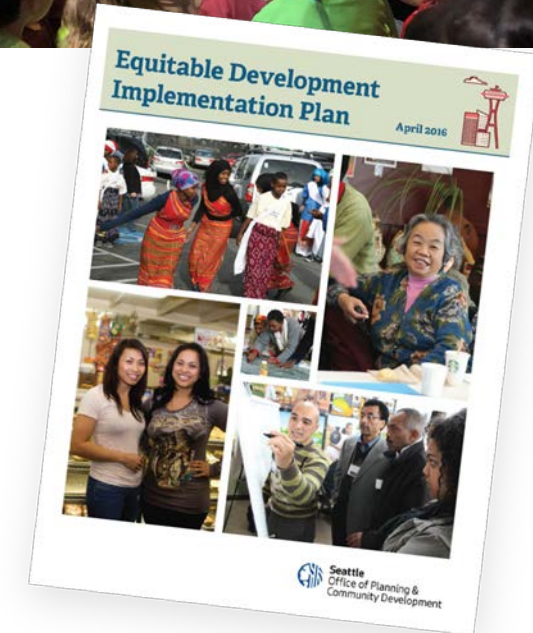
- Station area planning
 - Land use
 - Station access projects
- Mobility planning with SDOT
 - Bicycle network
 - Transit connections
- Infrastructure improvements
 - 145th Ave BRT Stations
 - 145th Multi-modal Corridor Plan
 - I-5 & 145th Interchange Project



2020 WORKPLAN

Equitable Development Initiative

- 2020 EDI funding cycle to be announced shortly
 - \$5m per year ongoing
- Additional investments with funds from sale of Mercer St. properties
- Monitoring Report Phase 1
 - Equitable Development Outcome Indicators
- Monitoring Report Phase 2
 - Heightened Displacement Risk Indicators
- Fire Station 6 for community ownership



2020 WORKPLAN

Industrial Lands Strategy



Mayor Durkan's Principles

- A. Using the power of **local workers** and **companies** to chart a blueprint for the future.
- B. Strengthening and growing Seattle's **industrial and maritime sectors**.
- C. Promoting **equitable access** to **living-wage jobs** through an **inclusive economy** and **ladders** of economic opportunity.
- D. Improving the **movement of people** and **goods** to and within industrial zones and increase **safety** for all travel modes.
- E. Aligning Seattle's industrial and maritime strategy with key **climate** and **environmental protection** goals.
- F. Developing a **proactive land use policy** agenda that harnesses growth and economic opportunities to ensure **innovation** and **industrial jobs** are a robust part of our future economy.

Mayor Durkan's Principles

- A. Use the power of **local workers** and **companies** to chart a blueprint for the future **using the principles of restorative economics** to support the cultural, economic, and political power of communities most impacted by **economic and racial inequities**
- B. Strengthen and grow Seattle's **industrial and maritime sectors** so **communities that have been excluded** from the prosperity of our region can benefit from our future growth
- C. Promote **equitable access** to **high quality, family-wage jobs** and **entrepreneurship for Black, Indigenous, and People of Color** through an **inclusive** industrial economy and **ladders** of economic opportunity
- D. Improve the **movement of people and goods** to and within industrial zones and increases **safety** for all travel modes
- E. Align Seattle's industrial and maritime strategy with key **climate** and **environmental protection** goals
- F. Develop a **proactive land use policy** agenda that harnesses growth and economic opportunities to ensure **innovation** and **industrial jobs** are a robust part of our future economy **that is inclusive of emerging industries** and supportive of **diverse entrepreneurship**



Thank you

Sam Assefa, Director
Samuel.Assefa@seattle.gov

OPCD