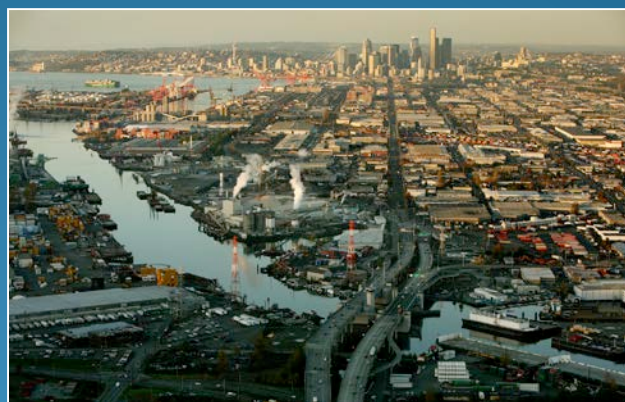




# Duwamish Valley Program

*Advancing Equity & Environmental Justice in Seattle*



Seattle Planning Commission  
Alberto Rodriguez, OSE  
David W. Goldberg, OPCD

October 12, 2017



# Why

1.



Racial inequities

2.



Health disparities

3.



Community Prioritization

4.



Projects underway

2015 - 2016

Equity & Environment Initiative  
Equitable Development Initiative  
Equitable Public Engagement

2016-onward

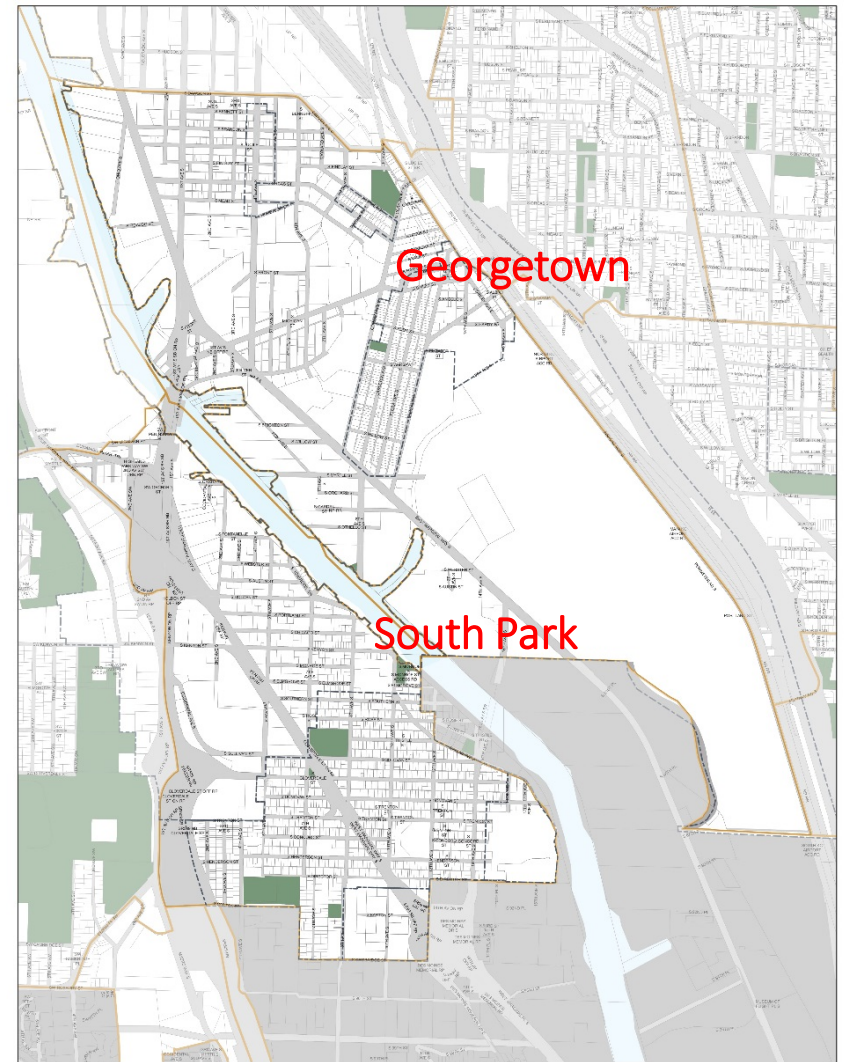
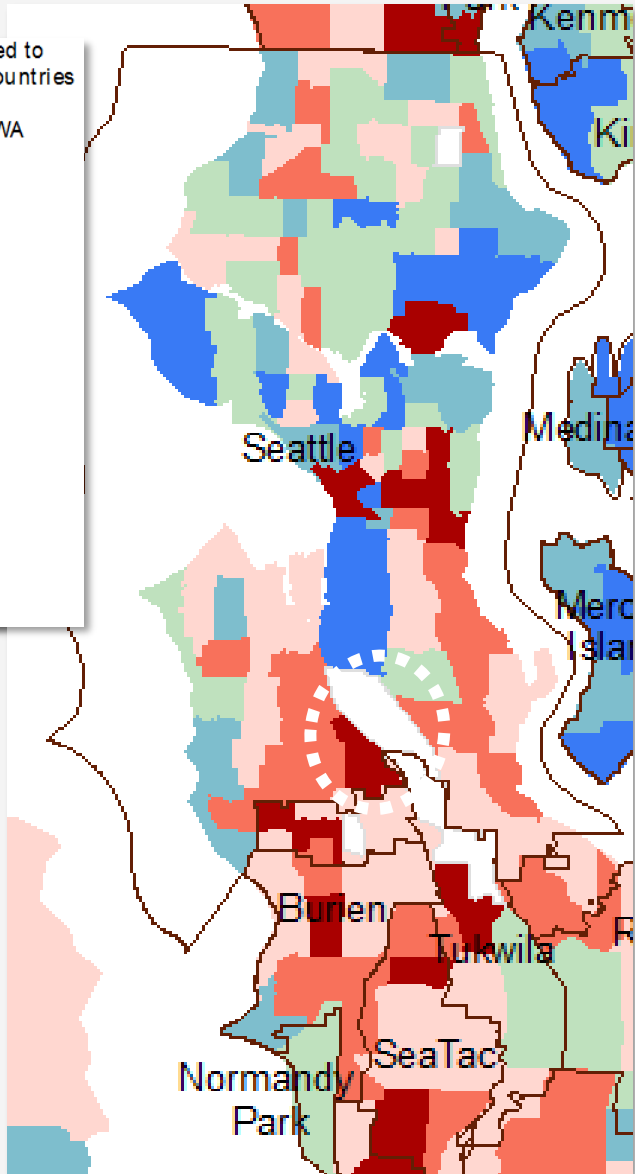
Duwamish Valley Program  
- OPCD/OSE, DON, SOCR  
- IDT  
- Capital Cabinet

# Where

Life Expectancy Compared to the Ten Longest-Lived Countries by Census Tract 2005-2009, King County WA

**Legend**

- CITY
- Calendar Years Ahead
  - 31 to 42
  - 15 to 30
  - 1 to 14
- Calendar Years Behind
  - Zero to 9
  - 10 to 23
  - 24 to 57
- Small population



Draft -- Duwamish Valley (Georgetown & South Park) Focus Area

0 475 950 1,900 Feet

▲ NORTH

Legend:  
parcel boundaries  
Census Tracts  
Parks  
urban village boundaries

# What

## Environmental Justice



## Equitable Development

### Duwamish Clean-up will...

- Clean-up to remove pollution
- Create programs to support healthy levels of fish consumption

- Help provide a river environment that supports a healthy community
- Incorporate jobs and education programs
- Support sustained industrial/manufacturing activity

### Duwamish Program will...

- Improve the environmental determinants of health
- Climate resilience

- Support Strong Communities
- Align investments to create a neighborhood that supports a healthy community



*A healthy community protects and improves the quality of life for its citizens, promotes healthy behaviors and minimizes hazards for its residents, and preserves the natural environment. (Dannenber, Frumkin et al)*

# How

## **DUWAMISH VALLEY PROGRAM**

Operationalize the Mayors vision to align & coordinate City actions to achieve equitable development & environmental justice

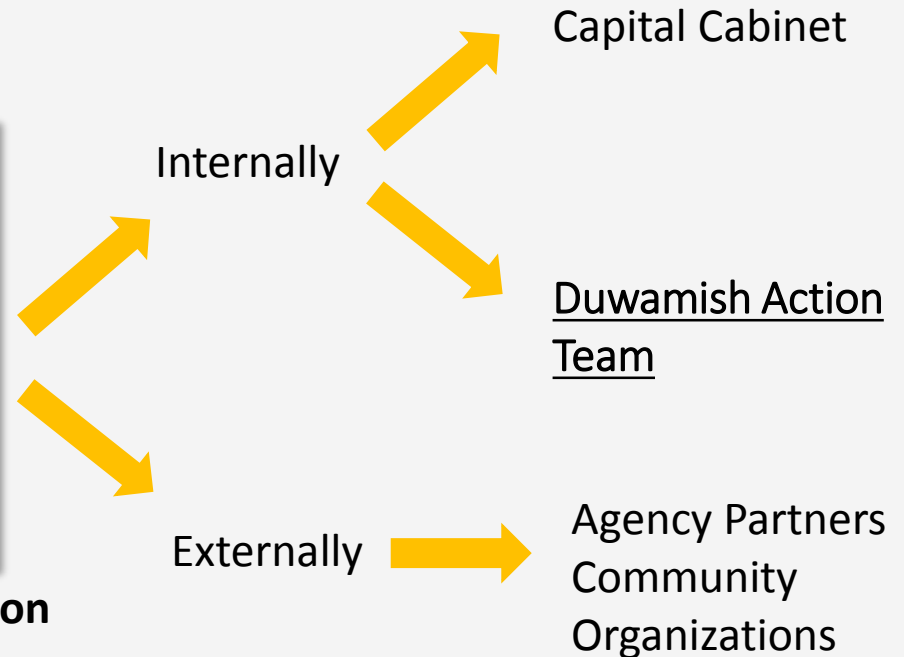
1. Articulate shared vision
2. Implement short-term actions (“quick wins”) to build trust and demonstrate responsiveness
3. Create a framework (Action Plan) to support long-term actions, including capital investments that deliver multiple benefits

# How

## GOALS



Renew the IDT into a **results-oriented action team** to align projects that advance environmental justice and equitable development



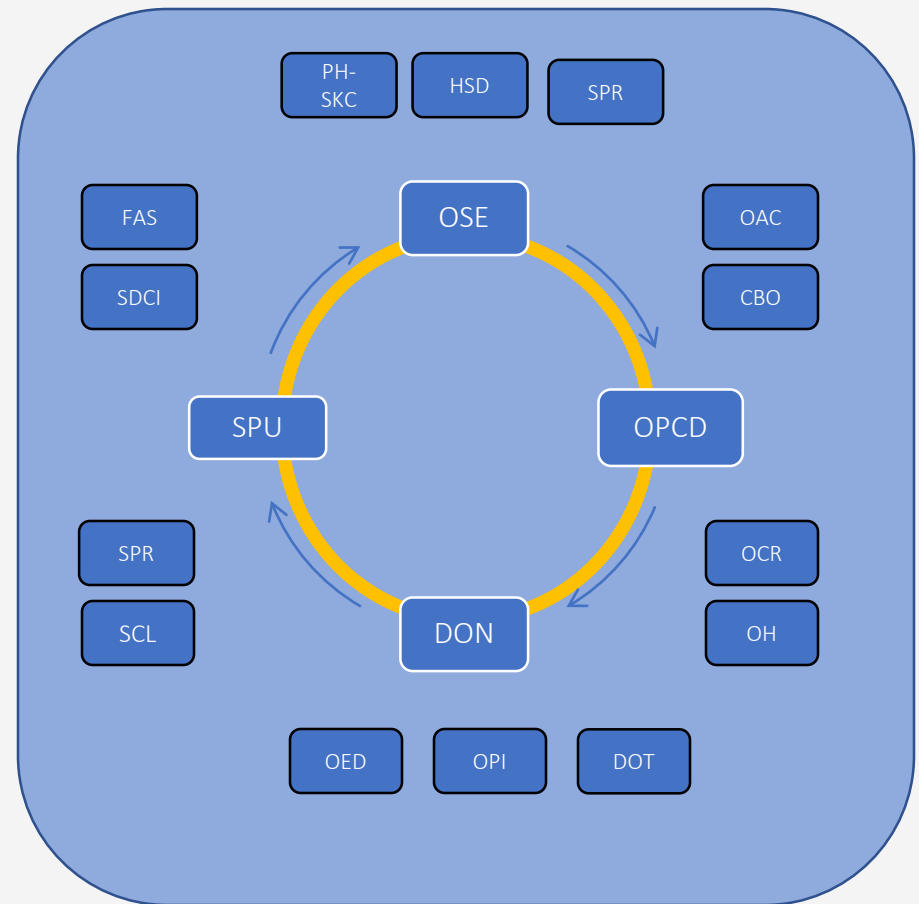
# DAT Structure & Roles

## Core Team

- Sustain momentum to achieve program objectives
- Set agendas
- Represent the DAT at briefings
- Bring policy, program and capital project perspectives to Core Team

## Team Members

- Complete picture of Capital & Programmatic Investments
- Engage with Near-Term Actions to maximize alignment with objectives
- Contribute to Action Plan describing how future investments align
- Identify future resource needs



# How

## **WORK PLAN**

1. Charter IDT, complete RET & internal/external engagement strategies
2. Inventory of City projects and programs, and community plans
3. Deliver immediate projects that demonstrate “proof of concept”
4. Develop shared vision
5. Inclusive community engagement to confirm priorities and guide longer-term strategies
6. Near, Mid & Long-term Strategies (including 2018 budget proposal)
7. Develop clear metrics/data
8. Action plan that guides City action to deliver multiple benefits in alignment with community priorities



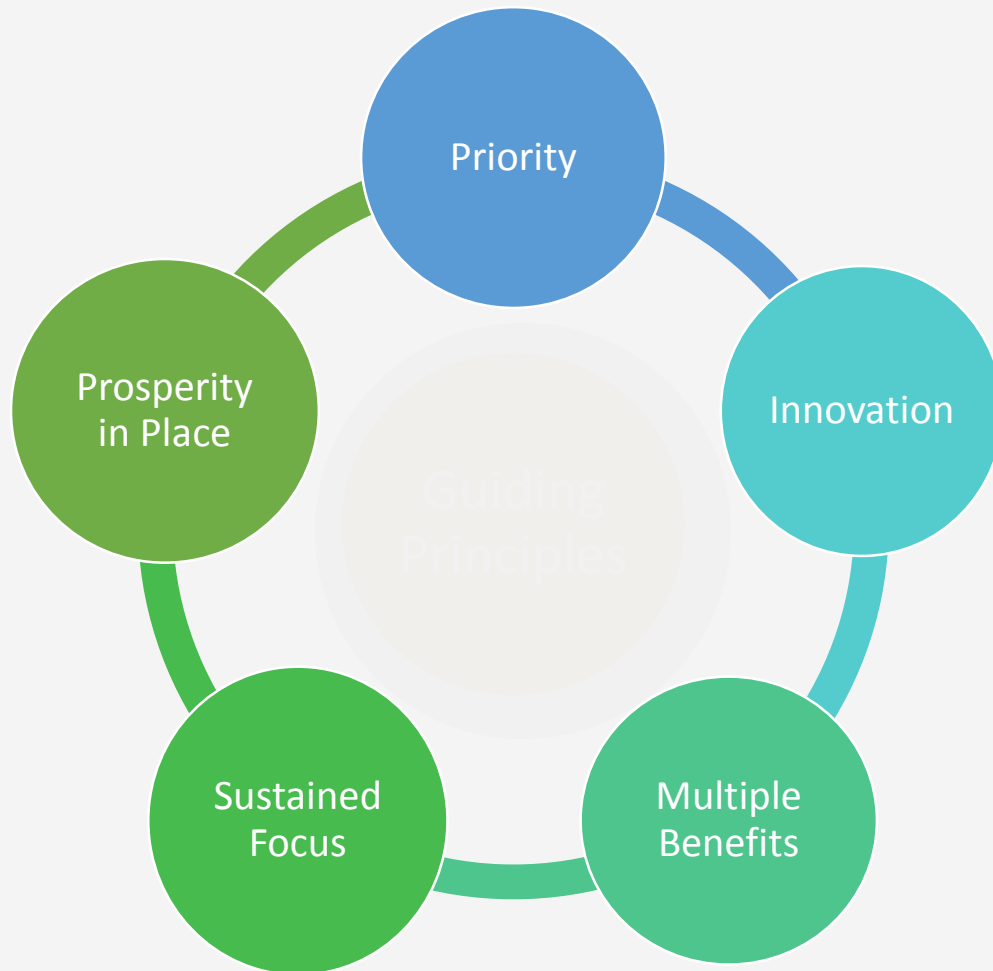
# Duwamish Valley Action Plan

Per feedback from Capital Cabinet, we organized our work and recommendations in the following manner:

- ✓ Near-term actions (0-1 years) - *Staff*
- ✓ Mid-term recommendations (1-5 years) - *Managers*
- ✓ Long-term recommendations (5+ years) - *Directors*



# Framework



*A Healthy Duwamish Valley* where communities thrive, and can benefit from integrated investments that weave together to *address multiple inequities* and *create a healthy place to live and work* now and into the future.



# *In the next year the Duwamish Valley...*

*(Near-Term Recommendations)*

# Near-Term (0-1 Years)

	Georgetown	South Park
1	De-paving and tree planting	Public Safety Task Force
2	Pavement to Parks	South Park Community Center site plan
3	Business Boost	South Park Neighborhood Center
4	S Michigan St.	Duwamish Waterway Park
5	Georgetown Mobility Study early implementation	Youth programming and training

# Near-Term (0-1 Years)

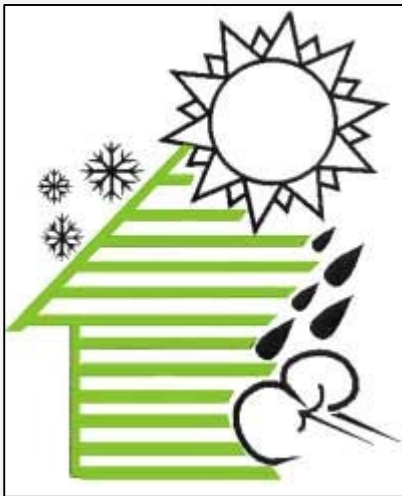
## THE 2018 PACKAGE:

OSE:



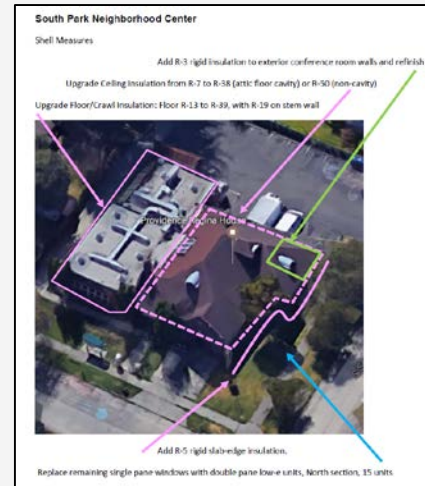
Asthma Prevention

OH:



Weatherization

DON:



Community-Managed Assets

DON:



Long-Term Community Engagement and Decision-Making



# *In 1-5 years the Duwamish Valley...*

*(Mid-Term Recommendations)*

# Public Safety

## **1. South Park Public Safety Task Force**

Public safety, crime prevention, and policing issues are community priorities. Seattle City Council issued a SLI asking the Executive convene a task force to report to Council recommendations regarding the safety and vitality of South Park. Key areas of recommendations include:

- a) Building a Strong and Resilient Community
- b) Physical Safety
- c) Investing in Children and Youth

## **2. South Park Public Safety Public Meeting**

In response to recent activities in South Park, DON organized a community meeting on August 29th to talk about the emerging issues and growing concerns. Panelists included: SPD, SDCI, and SPR. About 150 people attended and DON has been working with departments on response and next steps.

# Healthy Environment

## 11. Tree planting in the Duwamish Valley

South Park and Georgetown have the least tree canopy coverage in Seattle. Tree planting is a high community priority and can play a leading role in reducing dust, heat, helping with drainage, and improving walkability.

### STRATEGIES

- **Community-led tree planting in ROW & residential properties.** Hire community group to plant trees in the ROW, per the City's trees inventory and management plan.
- **Plant & maintenance trees on commercial property.** Work with ECOSS to partner with businesses and industries to plant trees on their property in ways that allow for existing and planned economic activities.
- **Increase tree canopy in agency-owned properties.** Develop a "Green Infrastructure Apprenticeship Program" with South Seattle College, King County, POS, WSDOT, etc.



# Parks and Open Spaces

## 16. South Park Community Center

A Rapid HIA documented community concerns about renovating the playground near SR99. SPR responded by bringing together the community and agencies to collaborate, and identify near- and mid-term actions to implement these plans and/or better align them to community goals.

### STRATEGIES

- **Ensure inclusive engagement in site planning and implementation.** Contract with community-based groups or residents to implement community engagement.
- **Make improvements that meet multiple community needs.** Work with design team and contractors to deliver STEM and/or environmental education curricula for children and youth.
- **Develop and fund programming that reflects community interests and diversity.** Implement early education program in partnership with DEEL.

# Parks and Open Spaces

## 17. Georgetown Off-Leash Area

Georgetown residents identified an OLA as a high priority during the creation of the Georgetown Open Spaces Vision Framework and Duwamish Valley Program-related community engagement activities.

### STRATEGIES

- **Support the community through the application and development processes of an off-leash area (OLA).** Assist community in identifying a project lead and site steward, as well as in developing a stewardship plan.
- **Maximize opportunities during the design and construction to integrate other community benefits.** Incorporating family-oriented features in design and construction of the OLA (e.g. picnic tables, children play structures, barbeque pits, other), depending on public input.

# Community Capacity

## 23. Community-Controlled Spaces

- The City is working to establish MOB lease agreement with the goal of transferring this South Park Neighborhood Center to a non-City entity.
- SCL has renovated the historic Georgetown Steam Plan and is working to establish a long-term management partnership that may include some community use. Businesses support community spaces, and there is interest in a regional arts center.

## STRATEGIES

- **Conduct a needs assessment and feasibility study of the South Park Neighborhood Center.** Coordinate with and support conversations hosted by the South Park Senior Center (funded through the Duwamish River Opportunity Fund).
- **Conduct community conversations about the need for community-controlled spaces in Georgetown related to capacity building as part of the Duwamish Valley Program.** Hire a community-based group (consultant) to perform conduct community listening sessions.
- **Support community in fulfilling identified space and programming needs.** Link construction and renovation opportunities to existing and new STEM- and arts-related efforts at Chief Sealth and Cleveland high schools.

# Mobility and Transportation

## 28. Georgetown-South Park Connection

The Georgetown community has identified creating a safe bicycle and pedestrian connection between Georgetown and South Park as one of the highest community priorities through Georgetown Open Space Framework, and Duwamish Valley Program- and Georgetown Mobility Study-related community engagement events.

### STRATEGIES

- **Prioritize design and planning of pedestrian, bicycle, and in-water connection improvements related to the Georgetown-South Park connection.** Support early activation (e.g. events and programming) at the key locations (e.g. Georgetown Steam Plant, The Flume, Georgetown Urban Farm and Food Forest, South Park Plaza) to promote use.
- **Construction of community-defined pedestrian, bicycle, and in-water connection improvements between Georgetown and South Park.** Maximize opportunities to use 1 Percent for Art funds to include art that reinforces the values, cultures, and traditions of the communities of Georgetown and South Park.

# Mobility and Transportation

## 29. South Park North Industrial Area Drainage and Street Improvements

- SPU & SDOT earmarked \$20M in street, drainage conveyance and water quality improvements.
- Street and drainage conveyance improvements planned for completion in 2021. SPU pump station and water quality facility completed in later years.

## STRATEGIES

- Work with the community to conduct residential and industry engagement that **builds capacity and cohesion in guiding place based design** for land and row improvements, such as: trees, sidewalks, green stormwater infrastructure, art, etc.
- **Leverage green infrastructure approaches and broader partnership opportunities** to enhance quality of life and address health and environmental equity issues.
- Pilot **integration of water management + land management approaches** to better address resiliency (sea-level rise, climate impact, displacement) needs
- Create **connection to source control and in river sediment cleanup** efforts as appropriate

# Economic Opportunity and Jobs

## 32. Lower Duwamish River Sediment Cleanup

- EPA-led Superfund cleanup of contaminated sediments in river. City participates on Lower Duwamish Waterway Group (LDWG).
- To date, Seattle and LDWG partners invested over \$50M in scientific studies and \$150M in early cleanups. Reduced contamination by about 50%.
- EPA clean up plan = additional \$342M sediment cleanup in river.
- Ecology is the lead agency for upland source control program to keep pollution out. SPU is leading the City effort and working with SDOT and SCL.

## STRATEGIES

- Within EPA's stakeholder involvement framework, work with project partners and community to:
  - Expand project related **education, technical training and secondary job opportunities** (*e.g. community information, worker training, food truck/local support*).
  - Maximize the cleanup project's **green footprint** (*traffic control, clean fuels, reducing waste*).
  - Stimulate **connectivity to upland quality of life/equity/resilience efforts** led by others, if and where appropriate.

# Economic Opportunity and Jobs

## 33. Duwamish Technical Training Center

The state-of-art Duwamish Technical Training Center will have: 1) classroom and outdoor training opportunities for entry-level, as well as seasoned, workers; 2) four acres of habitats similar to historic conditions on the Duwamish River; and 3) a walking trail and educational amenities. SCL is also considering community access to classroom space after hours.

## STRATEGIES

- **Maximize opportunities to address community-identified needs and reinforce community values, cultures, and traditions.** Include bicycle access and electric vehicle (EV) charging in building design, planning, and construction to reduce impacts to air quality.
- **Integrate community-oriented education opportunities into the project's habitat.** Develop community partnerships with Cedar River and Skagit Environmental Learning Centers to align the habitat restoration with environmental educational access for local youth of color.
- **Pursue opportunities to maximize local jobs, training, and economic mobility.** Actively pursue integration of Priority Hire into contracting for building construction.

# Affordable Housing

## 36. Supporting Affordable Housing

Georgetown and South Park are among the Seattle's most affordable neighborhoods, and are communities with a high risk of displacement. The community is prioritizing affordable housing so that those who have borne the historic impacts can enjoy the benefits from the river clean-up, drainage improvements, and improving environmental quality. OH anticipates several substantial affordable housing investments in the Duwamish Valley to address displacement pressures and stabilize existing residents.

### STRATEGIES

- **Target new “Healthy Home” resources to Duwamish Valley:** Invest new general fund resources to support people with asthma in single family homes in the Duwamish Valley, improving health outcomes and preserving affordability.
- **Support existing low income homeowners through home repair loans, grants, and energy efficiency services:** Support low income single family homeowners with suite of sustainable homeownership resources.
- **Preserve existing affordable housing with Housing Levy funds:** Invest City resources to help recapitalize and preserve existing subsidized affordable housing.
- **Preserve affordability in market rate housing through targeted implementation of rental rehab financing:** Market rental rehab loans to multifamily building owners in the Duwamish Valley.





*In 5-10 years the  
Duwamish Valley...*  
*(Long-Term Recommendations)*

# Biggest Areas of Opportunity



Anti-Displacement



Workforce Development



Climate Change



Parks & Open Space



“Health”



# Anti-Displacement

***Preserve and develop more affordable housing, cultural anchors, and community-serving commercial spaces to address displacement pressures and stabilize existing residents.***



Before river cleanup is finished, Duwamish Valley has XX affordable housing (both new and existing) created through existing programs as well as new partnership with the community.

# Workforce Development

*Integrate workforce development in all projects in the Duwamish Valley.*

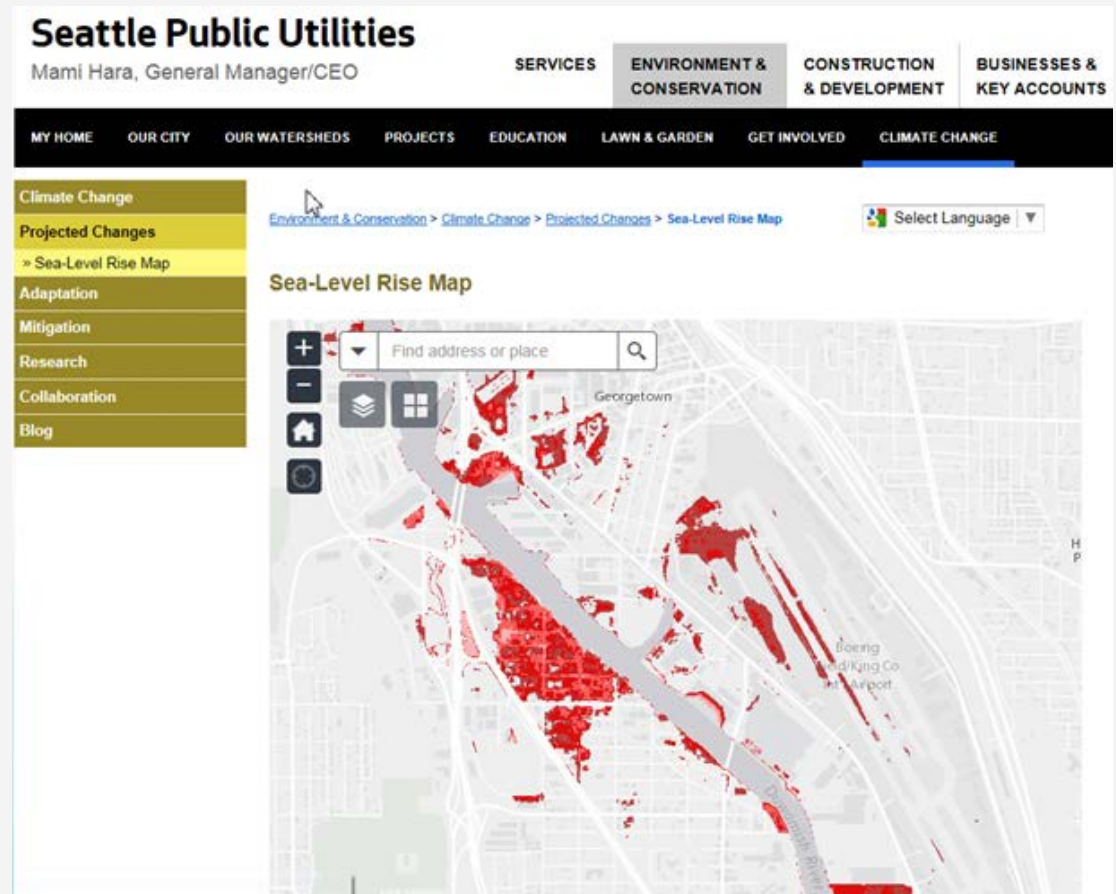
- By **2019**, implement a coordinated initiative to increase local access to contracting and jobs in Duwamish Valley projects.
- Expand partnerships to better connect community members to regional prosperity.



# Climate Change

*Seattle is national model on how to adapt to sea level rise in an urban area.*

By 2020, develop a geographic strategy to keep people and businesses in place, taking into consideration sea level rise and other climate change-related issues.



# Parks & Open Spaces

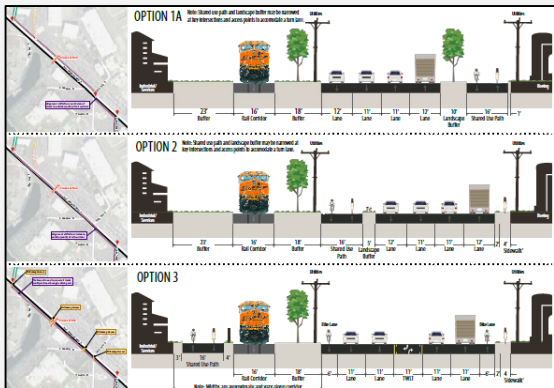


***Increase access to parks and open spaces, and recreation programs in the Duwamish Valley; emphasizing riverfront access, inclusive design, and mobility.***

By 2025, acquire and develop:

1. Duwamish Waterway Park
2. South Park Plaza (waterfront parcel)
3. Georgetown Off-Leash Area
4. 12<sup>th</sup> & Elmgrove

Partner with SPF to seek funding to progress design development in support of securing construction funds.



# 8<sup>th</sup> Ave. S Strategy

***8<sup>th</sup> Ave. S is a street that allows for recreation and river access, industrial activities, and promotes environmental and community health.***

Assign a department to be the lead for an 8<sup>th</sup> Ave. S strategy. In 2023 (next Capital Improvement Projects cycle), consider funding a long-term solution.



# Tying it all together

- Establish a nationally recognized model that will help us get this done?
- Adopt DVP's racial equity actions for all future projects in the Duwamish Valley in ways that work for large and small projects?

